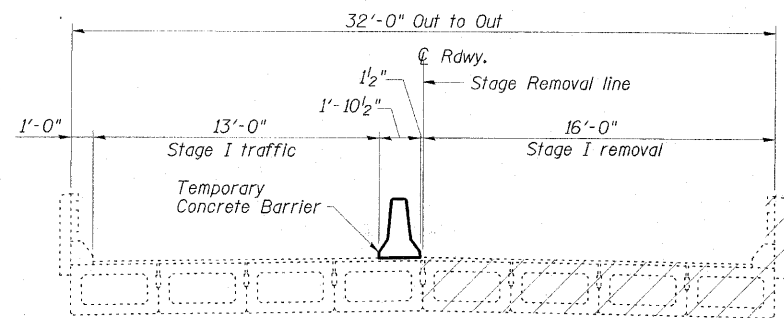
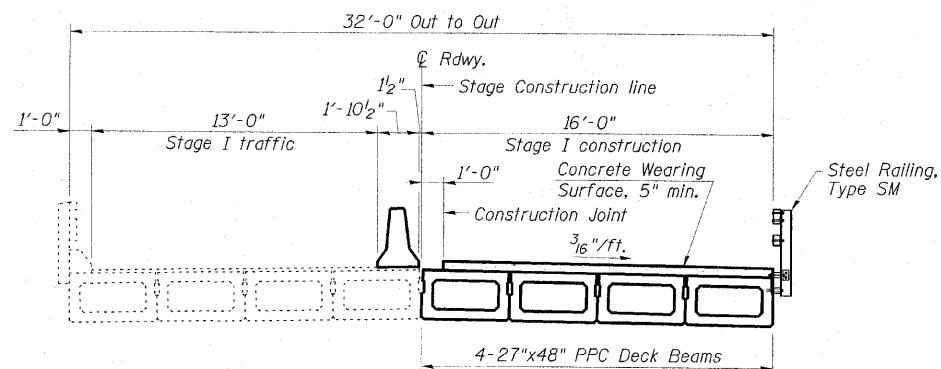


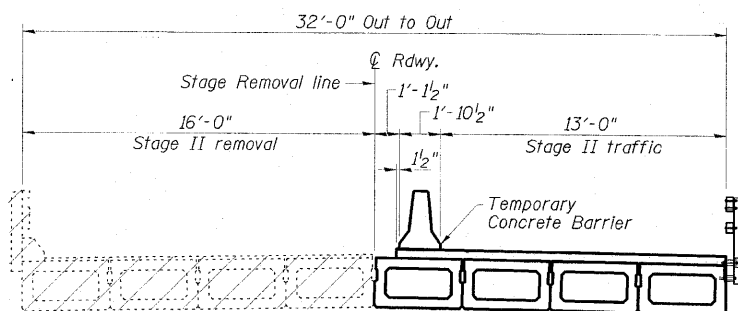
STATE OF ILLINOIS  
DEPARTMENT OF TRANSPORTATION



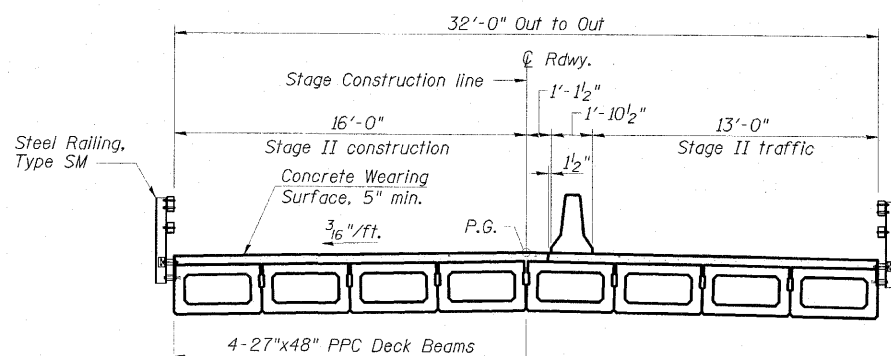
**STAGE I REMOVAL**



**STAGE I CONSTRUCTION**

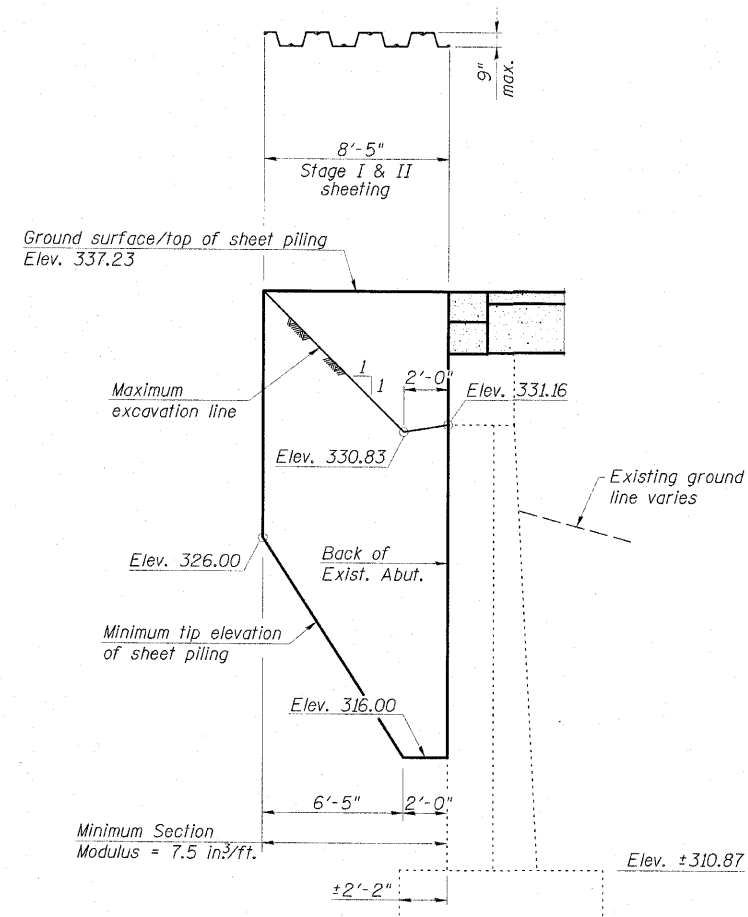


**STAGE II REMOVAL**



**STAGE II CONSTRUCTION**

Notes:  
All staging sections are looking south.  
See sheet 12 of 20 for details at Stage Construction line.  
Stage Construction line for abutments and approach slabs matches construction joint in concrete wearing surface.  
Removal of existing bridge rails, concrete curbs and expansion joints is included with Removal of Existing Superstructures No. 1.  
For quantity of Temporary Concrete Barrier, see Roadway Plans.



**TEMPORARY SHEET PILING**  
(Dimensions are along  $\text{\textcircled{C}}$  Rdwy.)

Notes:  
If the Contractor chooses to alter the temporary cantilevered sheet piling design requirements shown on the plans, a design submittal including plan details and calculations will be required for review and acceptance by the Engineer.  
The Contractor shall connect the first sheet to the existing abutment cap to ensure stability of sheets driven adjacent to the abutment. This connection shall be reviewed and accepted by the Engineer and included in the cost for Temporary Sheet Piling.

**STAGE CONSTRUCTION DETAILS**  
**STRUCTURE NO. 077-0016**

<b>ESCA</b> CONSULTANTS, INC.		
DESIGNED BY:	MTD	01/10
DRAWN BY:	DWH	01/10
CHECKED BY:	MTD	01/10
APPROVED BY:	RDP	05/10

SHEET NO. 3 20 SHEETS	F.A.S. RTE.	SECTION	COUNTY	TOTAL SHEETS	SHEET NO.
	2936	14BR-1	PULASKI	68	18
CONTRACT NO. 78071					
FED. ROAD DIST. NO.		ILLINOIS	FED. AID PROJECT		