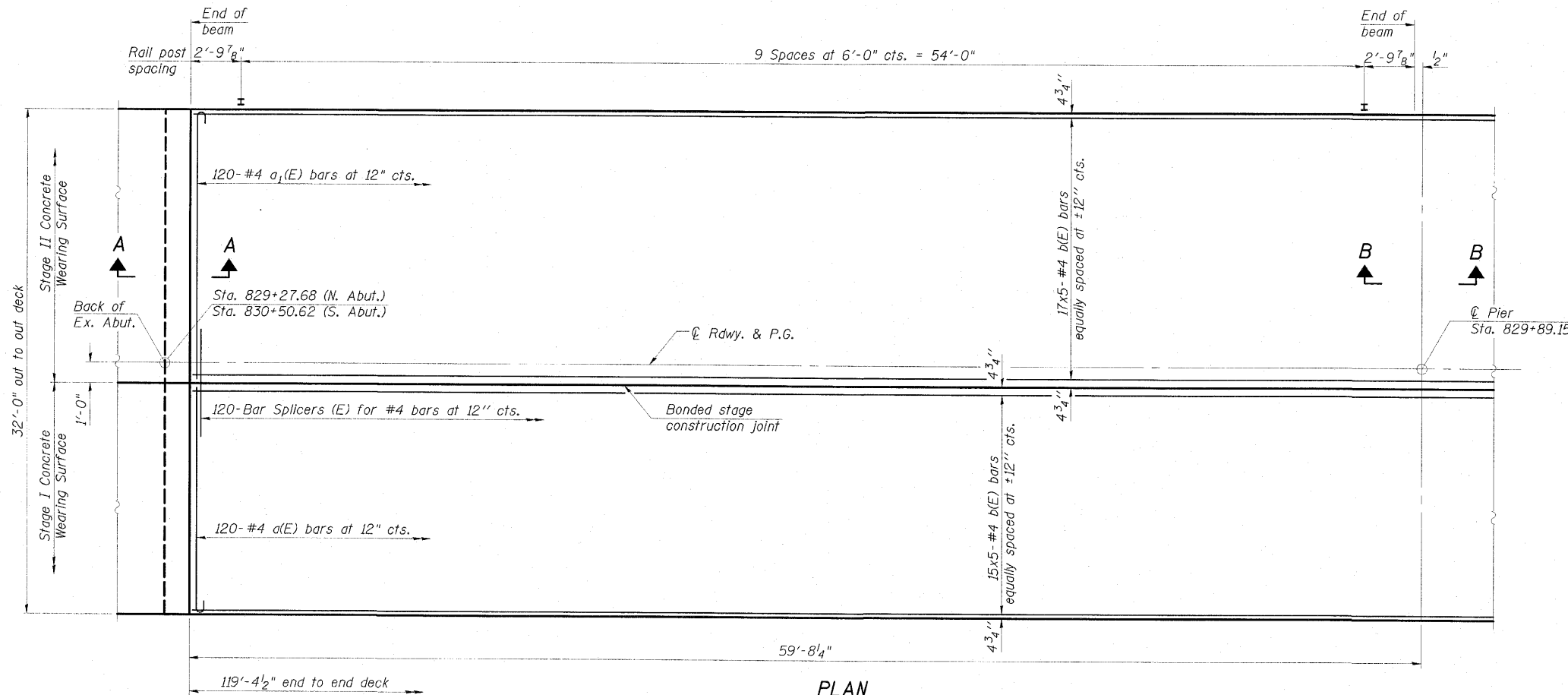
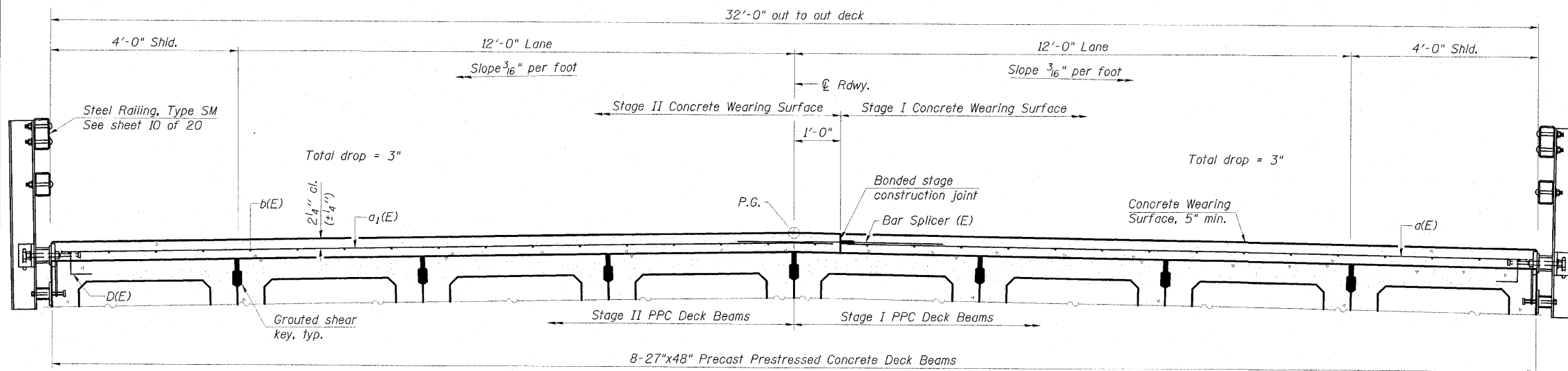


STATE OF ILLINOIS  
DEPARTMENT OF TRANSPORTATION



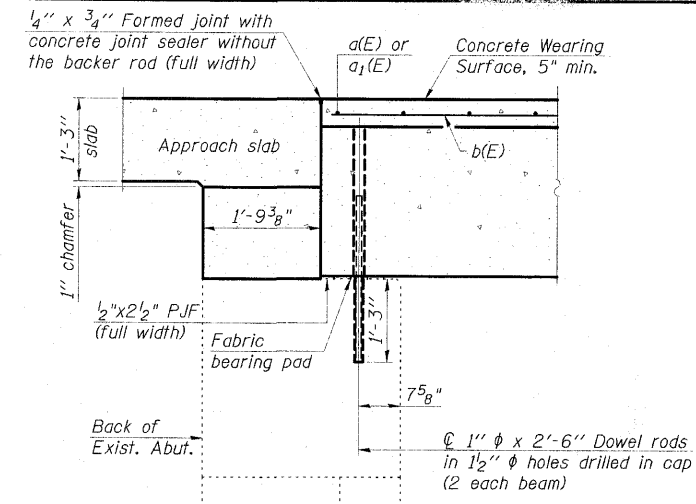
PLAN



CROSS SECTION  
(Looking South)

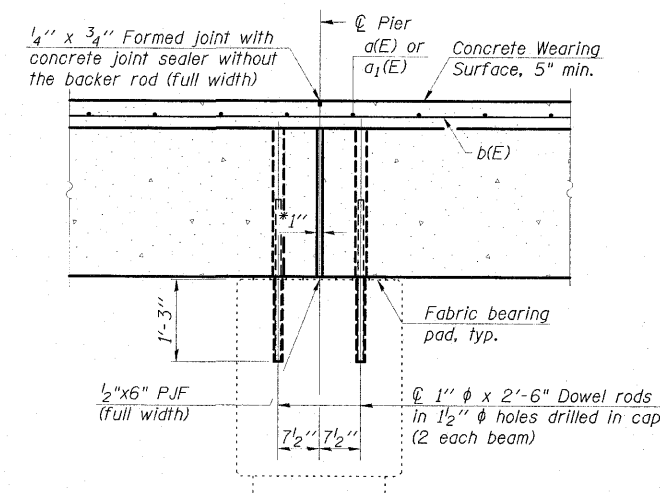
Notes:  
See sheet 7 of 20 for Superstructure Details and Bill of Material.  
Bars indicated thus 15x5-#4 etc. indicates 15 lines of bars with 5 lengths per line.  
For Bar Splicer details, see sheet 18 of 20.  
The Concrete Wearing Surface shall be poured after the beams have been erected and the shear keys have been grouted.

MINIMUM BAR LAP  
#4 bar = 2'-1"



SECTION A-A  
(Dimensions are at Rt. L's)

Notes:  
All concrete wearing surfaces shall be placed prior to casting a backwall and/or approach slab.  
See sheet 12 of 20 for Fabric bearing pad details.



SECTION B-B  
(Dimensions are at Rt. L's)

\* 1" Joint shall be filled with non-shrink grout. 1" dimension may vary to accommodate tolerance in beam lengths.

**ESCA**  
CONSULTANTS, INC.

DESIGNED BY: MTD 01/10  
DRAWN BY: KAH 01/10  
CHECKED BY: MTD 01/10  
APPROVED BY: RDP 05/10

PDS-M-R34-0

11-1-09

SUPERSTRUCTURE DETAILS  
STRUCTURE NO. 077-0016

SHEET NO. 6 20 SHEETS	F.A.S. RTE.	SECTION	COUNTY	TOTAL SHEETS	SHEET NO.
	2936	14BR-1	PULASKI	68	21
			CONTRACT NO. 78071		
FED. ROAD DIST. NO.		ILLINOIS FED. AID PROJECT			