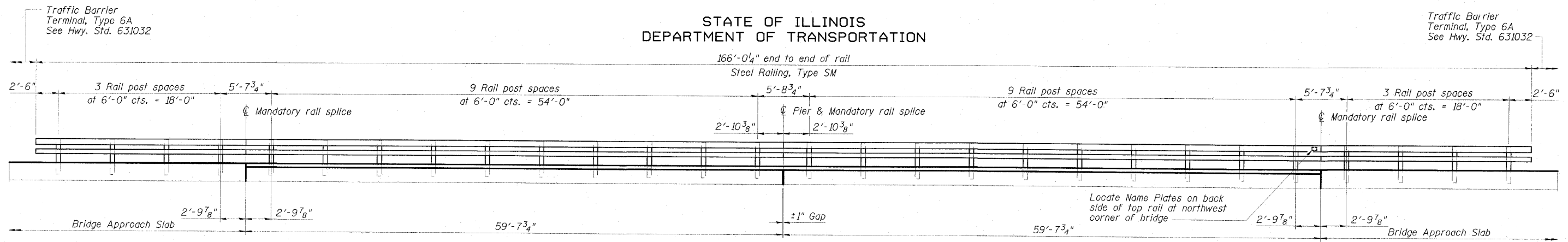


STATE OF ILLINOIS
DEPARTMENT OF TRANSPORTATION

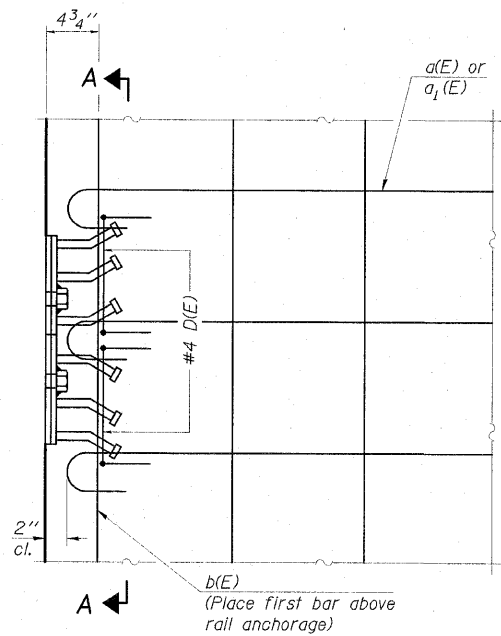


Abut.

RAILING ELEVATION

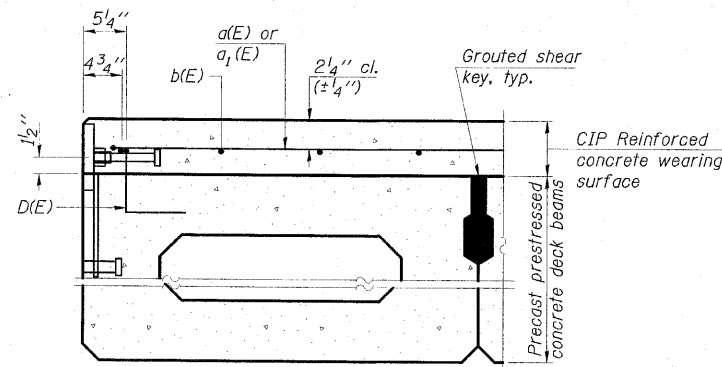
Abut.

Note:
See sheet 10 of 20 for railing details.

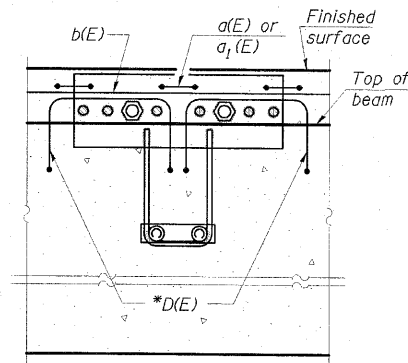


PLAN

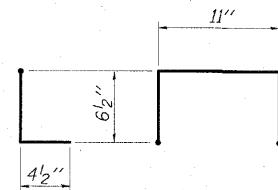
Note:
Formwork necessary for the wearing surface may be secured utilizing the bottom rail anchorage inserts and/or additional inserts cast into the beam.



SECTION THRU FASCIA BEAM

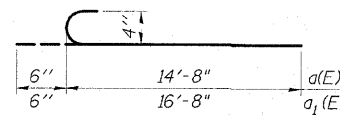


SECTION A-A

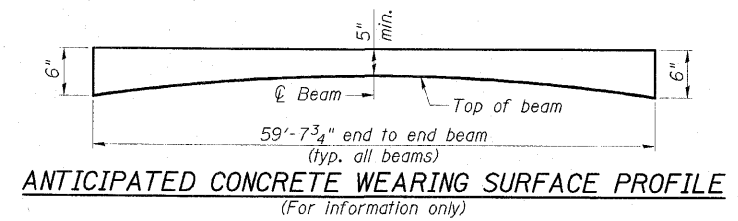


BAR D(E)

* Place 2-#4 D(E) bars in beam at each post location as shown. D(E) bar included in cost of beam.



BARS a(E) & a1(E)



ANTICIPATED CONCRETE WEARING SURFACE PROFILE
(For information only)

SUPERSTRUCTURE
BILL OF MATERIAL

Bar	No.	Size	Length	Shape	
a(E)	120	#4	15'-2"	C	
a1(E)	120	#4	17'-2"	S	
b(E)	160	#4	25'-6"	—	
Reinforcement Bars, Epoxy Coated				Pound	5,320
Concrete Wearing Surface, 5"				Sq. Yd.	425

SUPERSTRUCTURE DETAILS
STRUCTURE NO. 077-0016

ESCA
CONSULTANTS, INC.

DESIGNED BY: MTD 01/10
DRAWN BY: KAH 01/10
CHECKED BY: MTD 01/10
APPROVED BY: RDP 05/10

PDS-M-R34-D

11-1-09

SHEET NO. 7 20 SHEETS	F.A.S. RTE.	SECTION	COUNTY	TOTAL SHEETS	SHEET NO.
	2936	14BR-1	PULASKI	68	22
CONTRACT NO. 78071					
FED. ROAD DIST. NO.		ILLINOIS	FED. AID PROJECT		