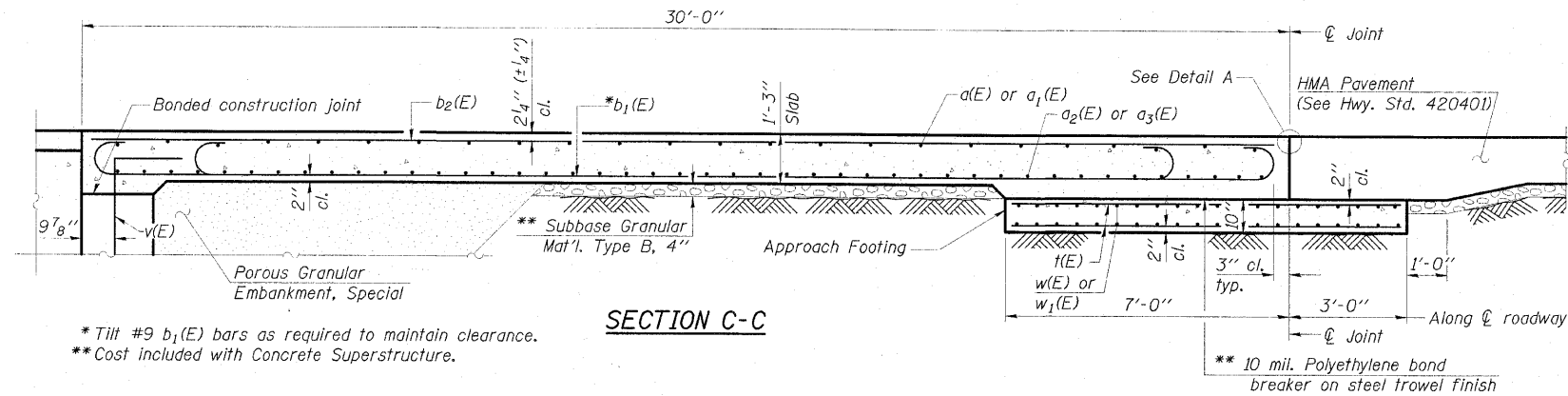


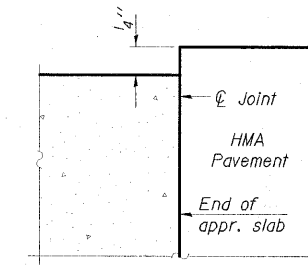
STATE OF ILLINOIS
DEPARTMENT OF TRANSPORTATION

Notes:
 Approach slab concrete shall be paid for as Concrete Superstructure.
 Approach footing concrete shall be paid for as Concrete Structures.
 Reinforcement shall be paid for as Reinforcement Bars, Epoxy Coated.
 For v(E) bar details, see sheets 13 and 14 of 20.
 The approach footing maximum applied service bearing pressure (Qmax) = 2.0 ksf.
 For Bar Splicer details, see sheet 18 of 20.
 Cost of excavation for approach footing included with Concrete Structures.
 For Porous Granular Embankment, Special and drainage treatment details, see sheet 2 of 20.



* Tilt #9 b₁(E) bars as required to maintain clearance.
 ** Cost included with Concrete Superstructure.

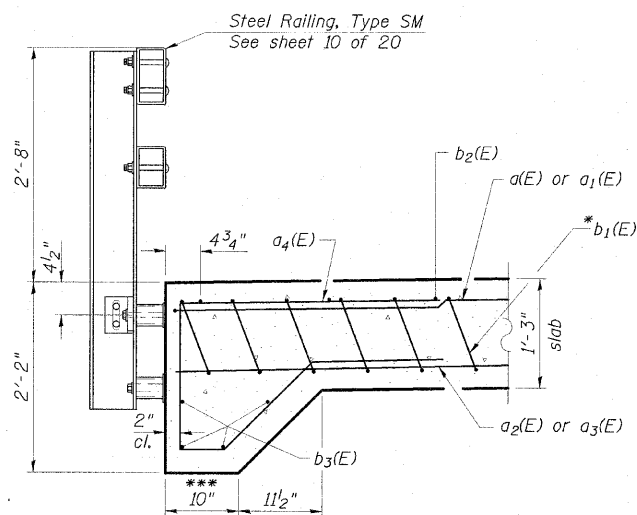
SECTION C-C



DETAIL A

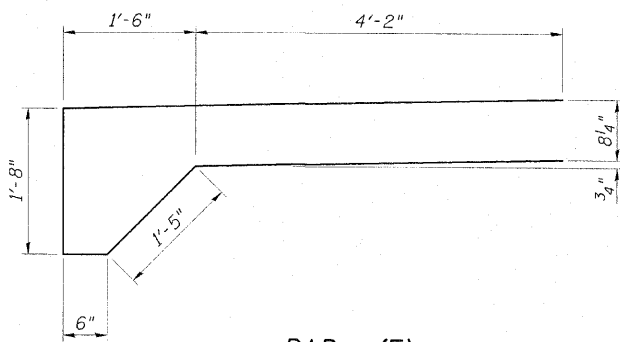
TWO APPROACHES
BILL OF MATERIAL

Bar	No.	Size	Length	Shape
a(E)	50	#4	15'-2"	┌───┐
a ₁ (E)	50	#4	17'-2"	┌───┐
a ₂ (E)	92	#5	14'-8"	┌───┐
a ₃ (E)	92	#5	16'-8"	┌───┐
a ₄ (E)	136	#5	13'-5"	┌───┐
b ₁ (E)	154	#9	29'-9"	┌───┐
b ₂ (E)	52	#4	29'-8"	┌───┐
b ₃ (E)	16	#8	20'-10"	┌───┐
t(E)	128	#4	9'-8"	┌───┐
w(E)	80	#5	14'-8"	┌───┐
w ₁ (E)	80	#5	16'-8"	┌───┐
Concrete Structures			Cu. Yd.	19.8
Concrete Superstructure			Cu. Yd.	95.0
Reinforcement Bars, Epoxy Coated			Pound	26,930

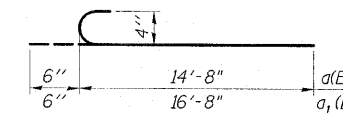


SECTION B-B

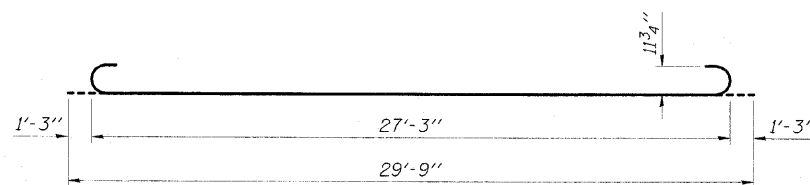
*** Varies near abutment to match Back of Exist. Wing



BAR a₄(E)



BARS a(E) & a₁(E)



BAR b₁(E)

(Sheet 2 of 2)
BRIDGE APPROACH SLAB DETAILS
STRUCTURE NO. 077-0016

ESCA
CONSULTANTS, INC.

DESIGNED BY:	MTD	01/10
DRAWN BY:	KAH	01/10
CHECKED BY:	MTD	01/10
APPROVED BY:	RDP	05/10

SHEET NO. 9 20 SHEETS	F.A.S. RTE.	SECTION	COUNTY	TOTAL SHEETS	SHEET NO.
	2936	14BR-1	PULASKI	68	24
CONTRACT NO. 78071					
FED. ROAD DIST. NO. ILLINOIS FED. AID PROJECT					