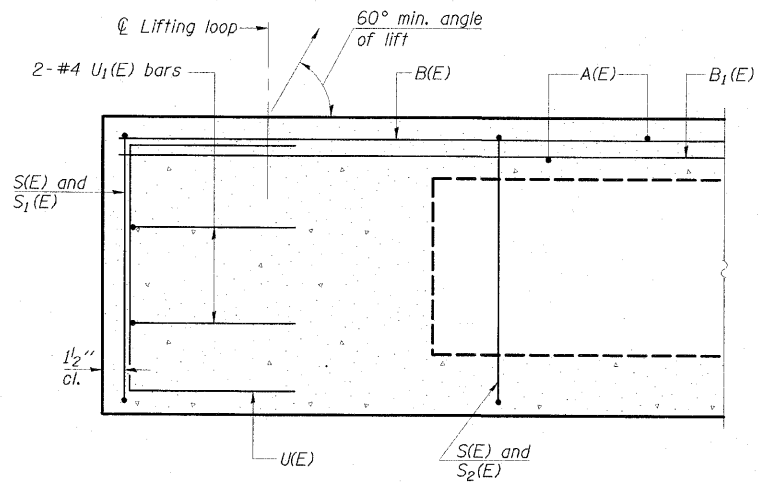
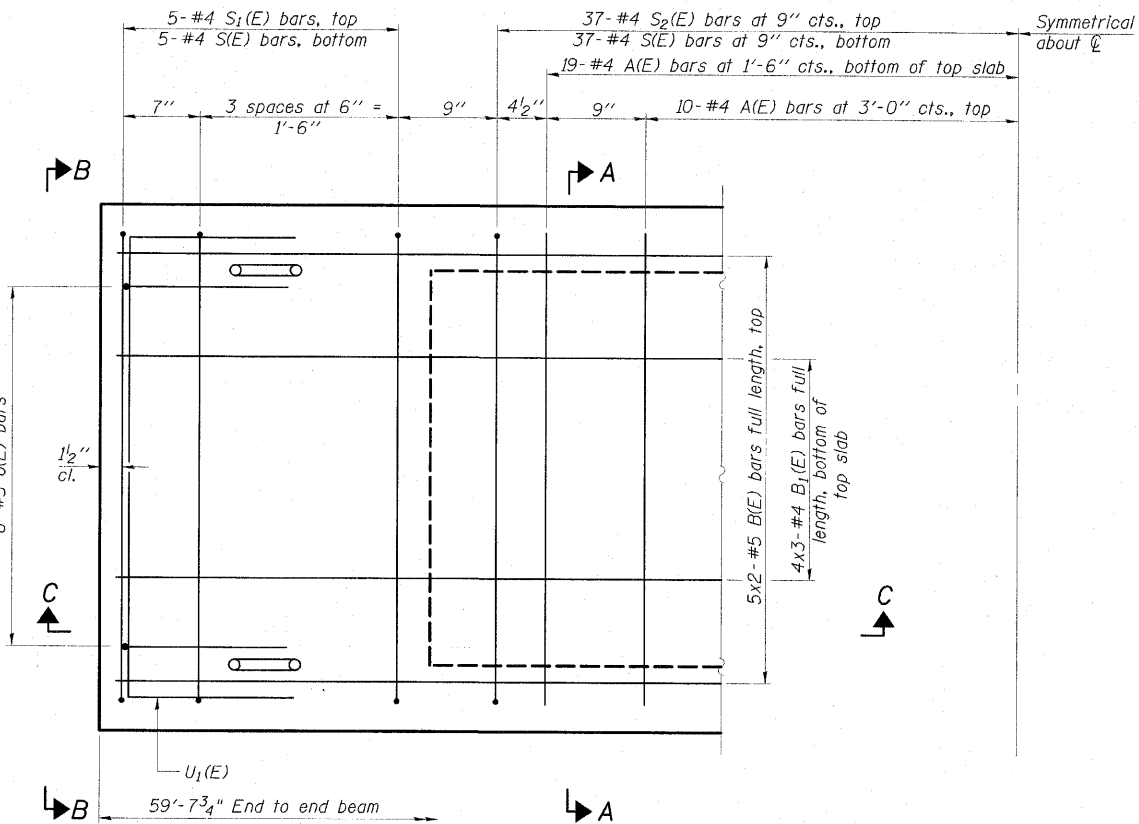


STATE OF ILLINOIS
DEPARTMENT OF TRANSPORTATION

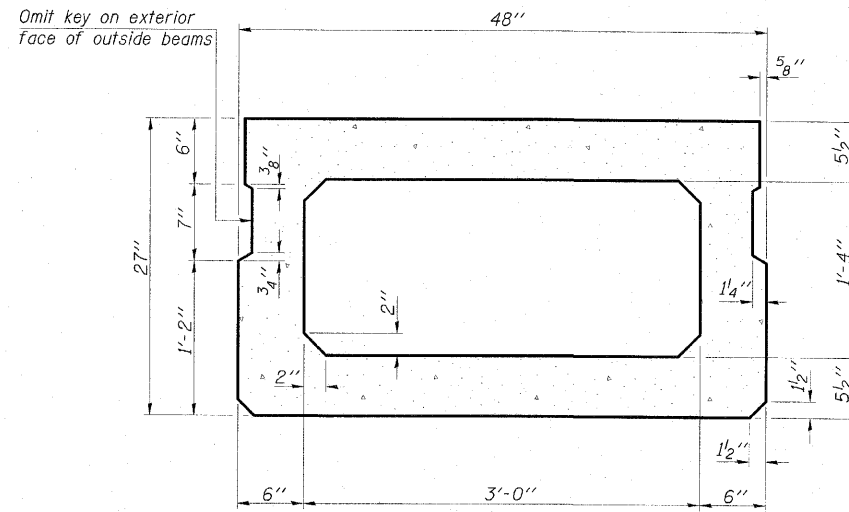


SECTION C-C

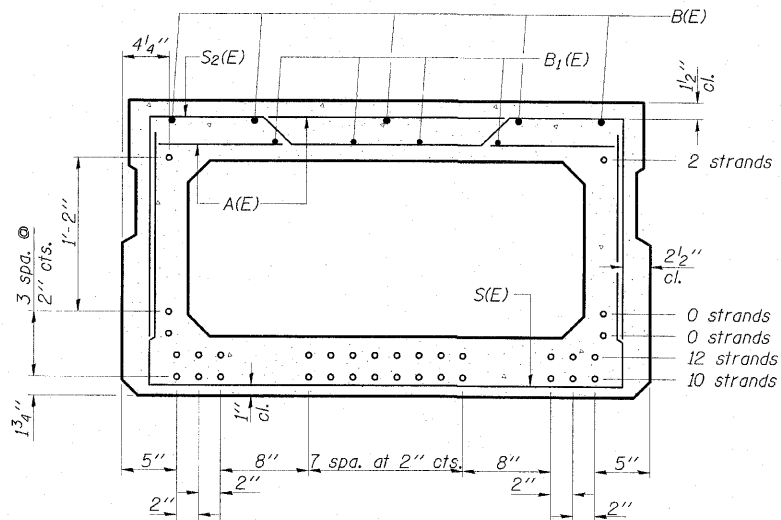


PLAN VIEW

Note: Spacing of S(E) and S₂(E) bars may be adjusted up to 4" in the immediate area of the transverse tie diaphragms to miss the block outs for the transverse ties.

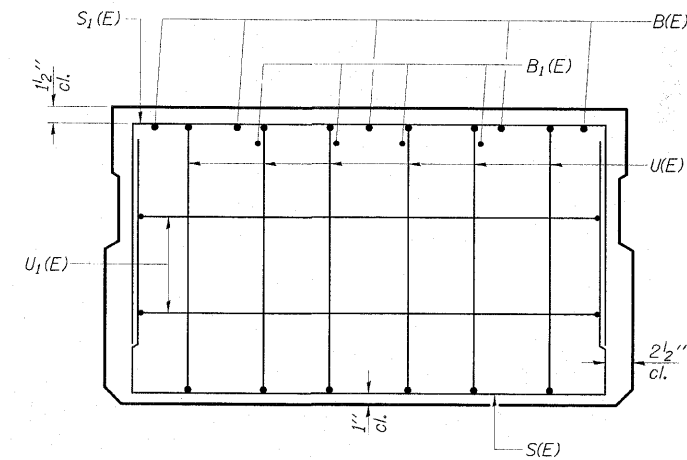


SECTION A-A
(Showing dimensions)



SECTION A-A

(Showing reinforcement and permissible strand locations)
Note: Place the number of strands specified in each row symmetrically about the centerline of beam in the permissible strand locations shown.



VIEW B-B

BAR LIST
ONE BEAM ONLY

(For information only)

Bar	No.	Size	Length	Shape
A(E)	56	#4	3'-7"	—
B(E)	10	#5	31'-0"	—
B ₁ (E)	12	#4	21'-3"	—
S(E)	83	#4	7'-5"	⌌
S ₁ (E)	10	#4	6'-11"	⌌
S ₂ (E)	73	#4	7'-2"	⌌
U(E)	12	#5	4'-6"	⌌
U ₁ (E)	4	#4	6'-0"	⌌

Notes: See sheet 12 of 20 for additional details and Bill of Material.
See sheet 7 of 20 for details of D(E) bars required at post locations on outside beams.

MINIMUM BAR LAP

#4 bar = 2'-1"
#5 bar = 2'-7"

27" X 48" PPC DECK BEAM
STRUCTURE NO. 077-0016

ESCA
CONSULTANTS, INC.

DESIGNED BY: MTD 01/10
DRAWN BY: KAH 01/10
CHECKED BY: MTD 01/10
APPROVED BY: RDP 05/10

PD-2748-0

11-1-09

SHEET NO. 11 20 SHEETS	F.A.S. RTE. 2936	SECTION 14BR-1	COUNTY PULASKI	TOTAL SHEETS 68	SHEET NO. 26
	CONTRACT NO. 78071				
FED. ROAD DIST. NO.		ILLINOIS FED. AID PROJECT			