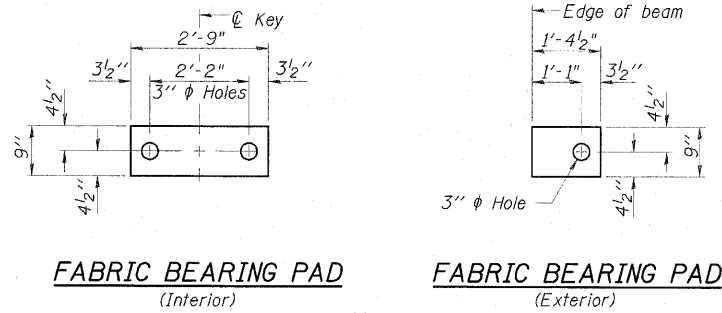


STATE OF ILLINOIS  
DEPARTMENT OF TRANSPORTATION

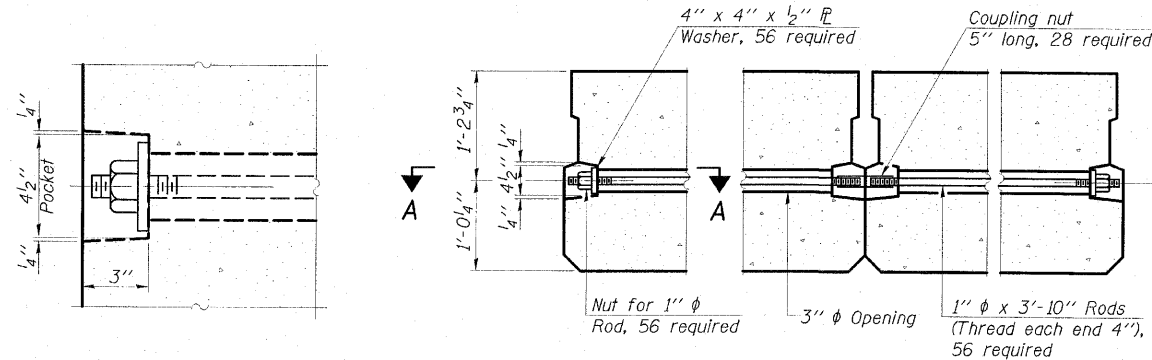


FABRIC BEARING PAD  
(Interior)

FABRIC BEARING PAD  
(Exterior)

FIXED

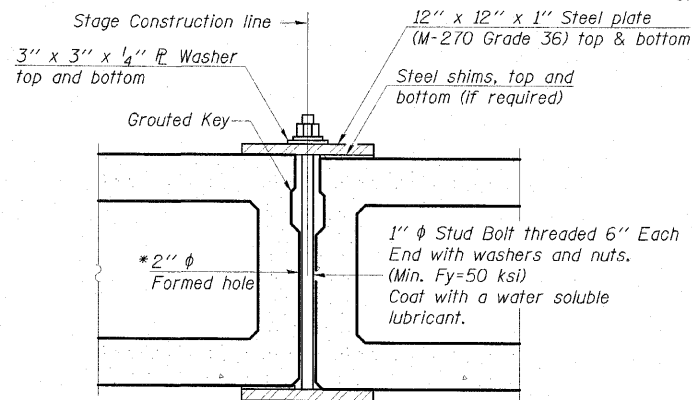
Note:  
All bearing pads shall be 1/2" thick.



SECTION A-A

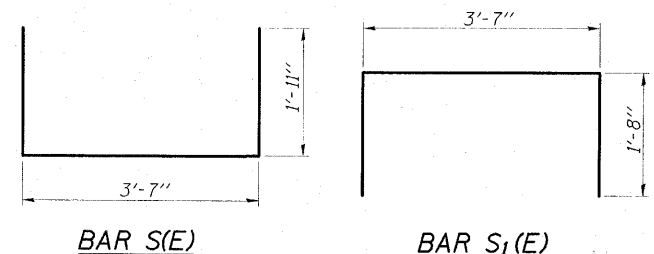
TYPICAL TRANSVERSE TIE ASSEMBLY

Stage II Construction Stage I Construction



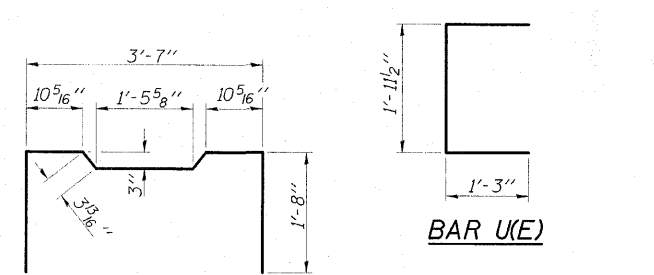
SECTION B-B

\* Cast semicircular recesses in the sides of each beam adjacent to the Stage Construction line. These recesses should align to form a hole at the appropriate locations for the clamping device bolts.



BAR S(E)

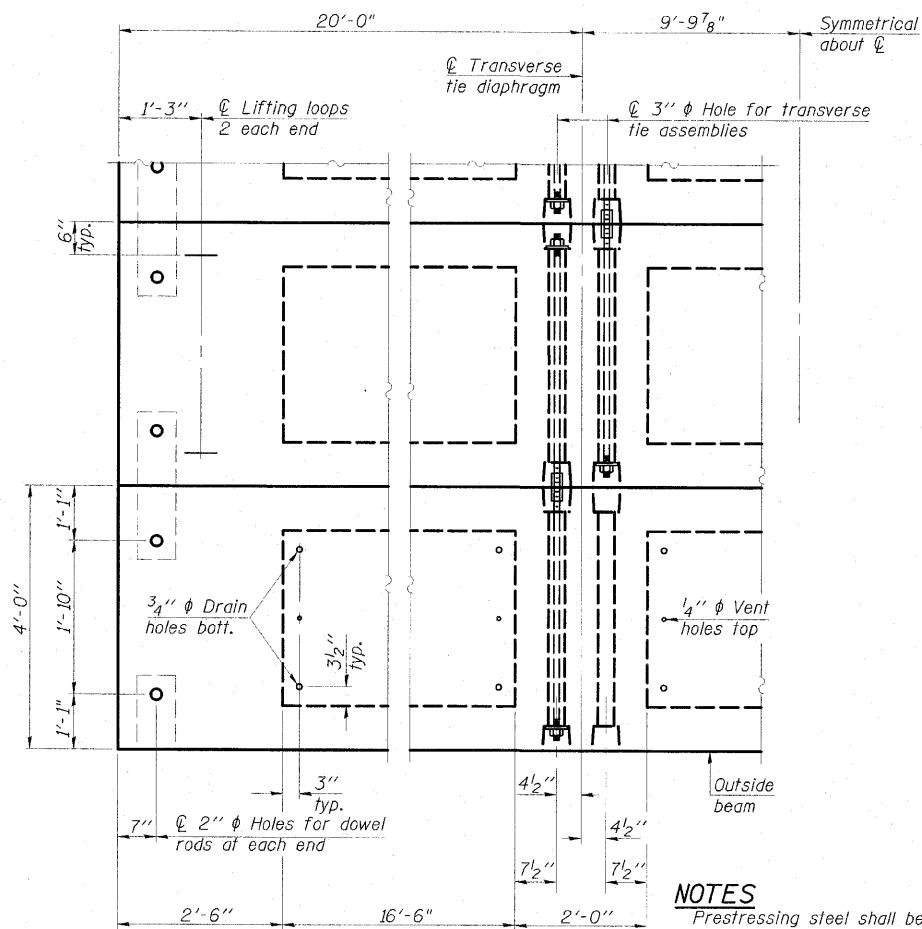
BAR S1(E)



BAR U(E)

BAR U1(E)

BAR S2(E)



PLAN VIEW

NOTES

Prestressing steel shall be uncoated high strength, low relaxation 7-wire strand, Grade 270. The nominal diameter shall be 1/2" and the nominal cross-sectional area shall be 0.153 sq. in. The 1" rods in the transverse tie assembly shall be tightened to a snug fit and the threads set. Pockets on exterior faces of bridge shall be filled with grout after transverse tie assembly is in place.

Reinforcement bars shall conform to ASTM A 706, Grade 60. (See Special Provisions).

Two 1/8" fabric adjusting shims of the dimensions of the exterior bearing pad shall be provided for each bearing pad location.

A minimum 2 1/2" diameter lifting pin shall be used to engage the lifting loops during handling.

Corrosion Inhibitor, per Article 1020.05(b)(12) and 1021.06 of the Standard Specifications, shall be used in the concrete for precast prestressed concrete deck beams.

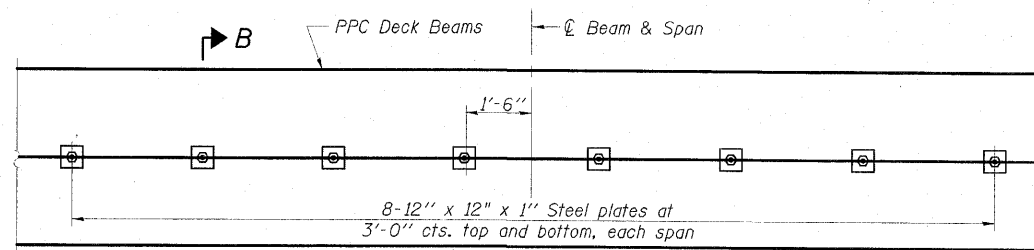
Compressive strength of prestressed concrete, f'c, shall be 6000 psi.

Compressive strength of prestressed concrete at release, f'ci, shall be 5000 psi.

After beams have been erected, holes shall be drilled into substructure and anchor dowels placed. Dowel holes shall be filled with non-shrink grout to top of beam and allowed to cure min. 24 hrs. prior to grouting the shear keys.

For Rail Anchor Device details and locations, see sheets 6 and 10 of 20.

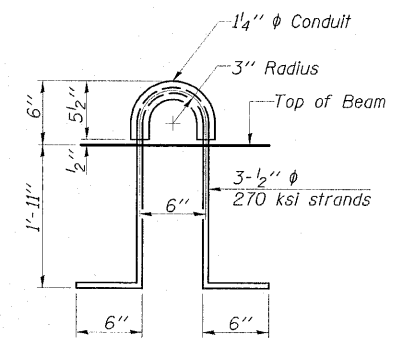
Exterior face of outside beams only.



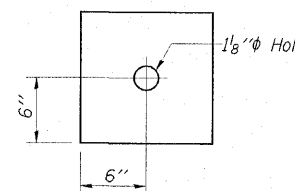
PLAN

SHEAR KEY CLAMPING DETAILS AT STAGE CONST. LINE

Notes:  
Cost included with Precast Prestressed Concrete Deck Beams (27" Depth).  
See Stage Construction Details for traffic lanes.



LIFTING LOOP DETAIL



CLAMPING PLATE

BILL OF MATERIAL

Precast Prestressed Conc. Deck Bms. (27" Depth)	Sq. Ft.	3,818
---	---------	-------

27" X 48" PPC DECK BEAM DETAILS  
STRUCTURE NO. 077-0016

SHEET NO. 12 20 SHEETS	F.A.S. RTE. 2936	SECTION 14BR-1	COUNTY PULASKI	TOTAL SHEETS 68	SHEET NO. 27
	CONTRACT NO. 78071				
FED. ROAD DIST. NO.		ILLINOIS FED. AID PROJECT			

**ESCA**  
CONSULTANTS, INC.

DESIGNED BY: MTD 01/10  
DRAWN BY: KAH 01/10  
CHECKED BY: MTD 01/10  
APPROVED BY: RDP 05/10

PD-2748-OD

11-1-09