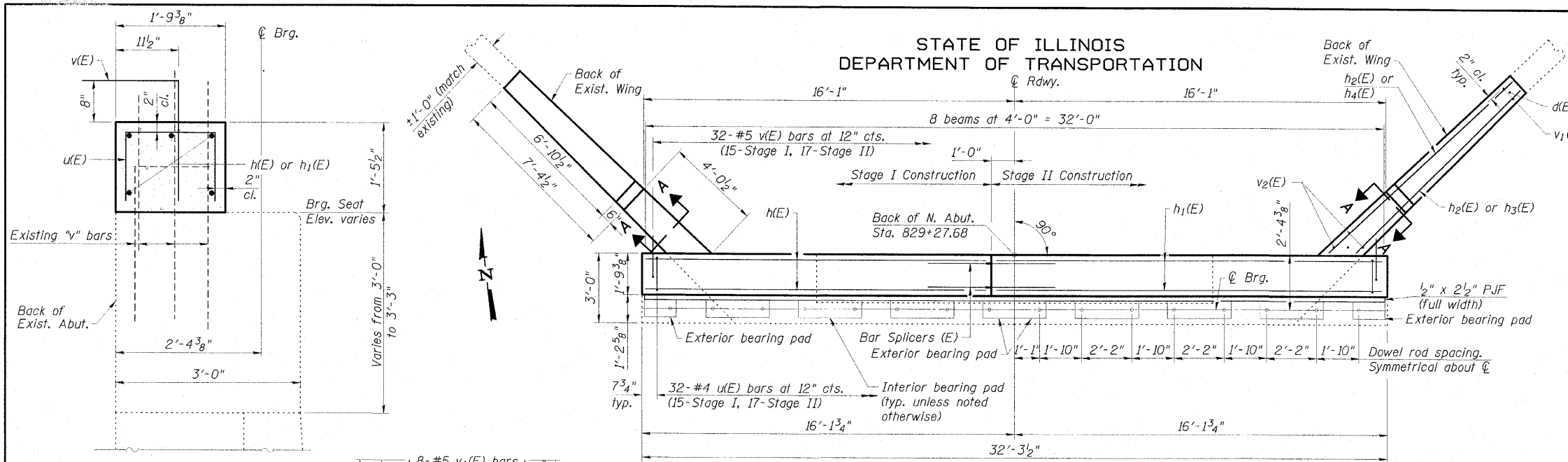
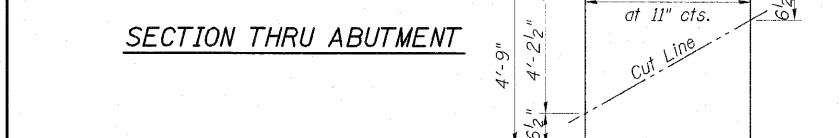


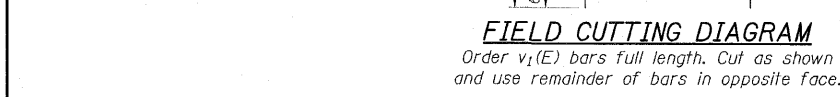
STATE OF ILLINOIS  
DEPARTMENT OF TRANSPORTATION



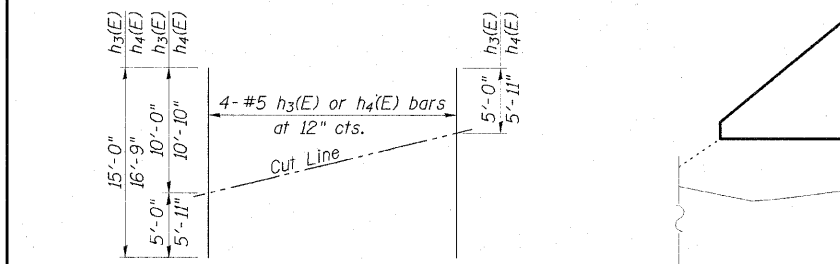
PLAN



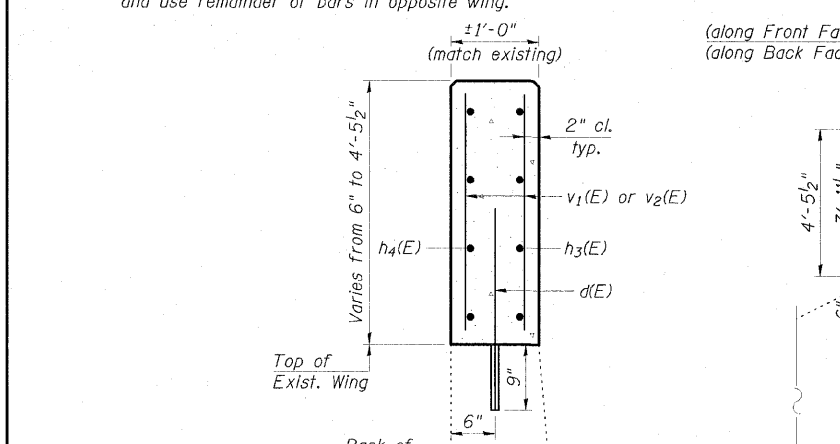
SECTION THRU ABUTMENT



FIELD CUTTING DIAGRAM  
Order v1(E) bars full length. Cut as shown and use remainder of bars in opposite face.



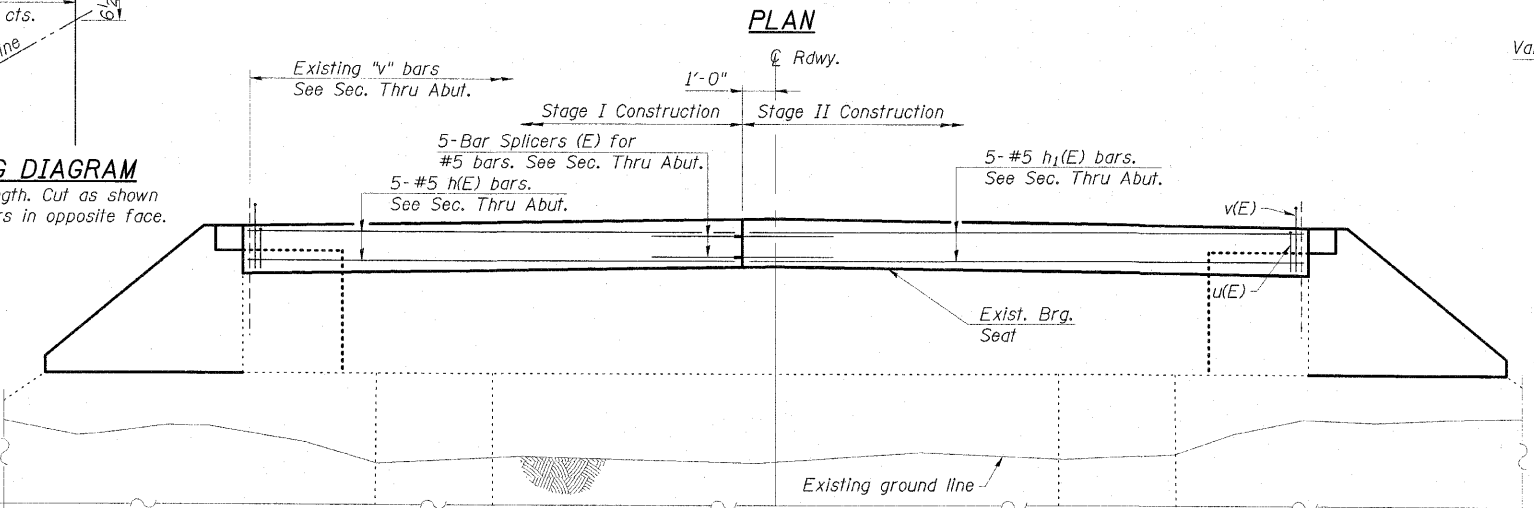
FIELD CUTTING DIAGRAM  
Order h3(E) and h4(E) bars full length. Cut as shown and use remainder of bars in opposite wing.



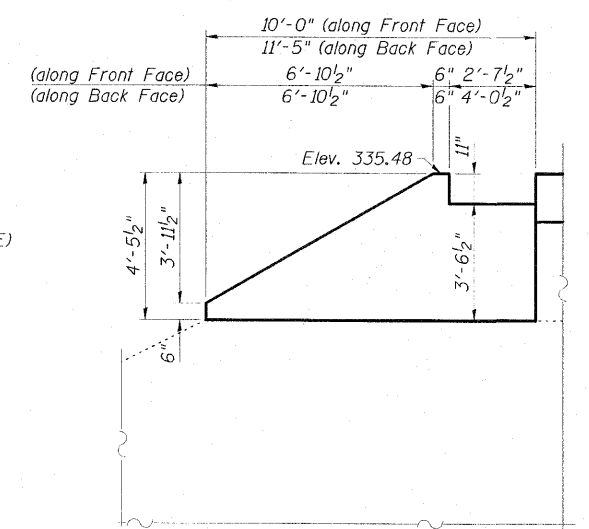
SECTION THRU WING

**ESCA**  
CONSULTANTS, INC.

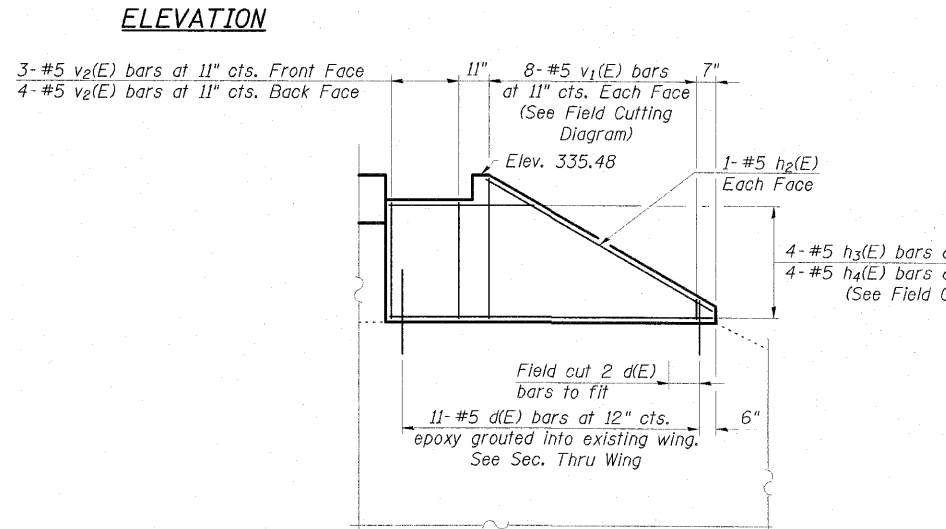
DESIGNED BY: MTD 01/10  
DRAWN BY: DWH/JPC 01/10  
CHECKED BY: MTD 01/10  
APPROVED BY: RDP 05/10



ELEVATION

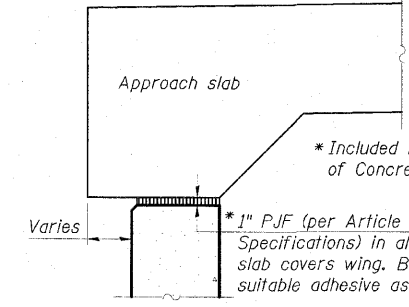


WEST WING ELEVATION  
SHOWING DIMENSIONS



EAST WING ELEVATION  
SHOWING REINFORCEMENT

Notes:  
End of new deck beams shall be aligned at the abutment. Any variation in the length of the deck beams shall be placed at the pier.  
Cast backwall after new deck beams have been erected and concrete wearing surface has been poured.  
Backfill required for the stage being constructed shall be placed behind the abutment after the new deck beams have been set, the backwall has been poured, and formwork removed. See Article 502.10 of the Standard Specifications.  
For details of Bar Splicers, see sheet 18 of 20.  
For drainage treatment details, see sheet 2 of 20.  
d(E) bars shall be epoxy grouted into existing wings according to Section 584 of the Standard Specifications.  
Existing bearing seat to be inspected by the Engineer after deck beam removal. Deteriorated concrete areas shall be repaired (estimated 15 sq. ft. Structural Repair of Concrete) and cracks shall be sealed (estimated 20' Epoxy Crack Injection) as required.  
Structural Repair of Concrete and Epoxy Crack Injection locations and dimensions are estimated from 06/24/2009 survey work. Actual locations and dimensions shall be shown by the Engineer on the as-built plans for this section.  
For bearing pad details, see sheet 12 of 20.



SECTION A-A

BILL OF MATERIAL

Bar	No.	Size	Length	Shape
d(E)	22	#5	2'-6"	—
h(E)	5	#5	14'-10"	—
h1(E)	5	#5	16'-10"	—
h2(E)	4	#5	8'-0"	—
h3(E)	4	#5	15'-9"	—
h4(E)	4	#5	16'-9"	—
u(E)	32	#4	3'-9"	┌
v(E)	32	#5	3'-8"	└
v1(E)	16	#5	4'-9"	—
v2(E)	14	#5	3'-3"	—
Structure Excavation			Cu. Yd.	27.5
Concrete Structures			Cu. Yd.	5.6
Reinforcement Bars, Epoxy Coated			Pound	725
Epoxy Crack Injection			Foot	20
Structural Repair of Concrete (Depth Equal to or Less Than 5")			Sq. Ft.	15

BAR v(E)

BAR u(E)

REPAIR LEGEND

Inspection Date: 06/24/2009

- C-4' } Epoxy Crack Injection (Crack-Length)
- Structural Repair of Concrete (Depth Equal to or Less Than 5")

NORTH ABUTMENT REPAIRS  
AND MODIFICATIONS  
STRUCTURE NO. 077-0016

SHEET NO. 14 20 SHEETS	F.A.S. RTE.	SECTION	COUNTY	TOTAL SHEETS	SHEET NO.
	2936	14BR-1	PULASKI	68	29
FED. ROAD DIST. NO.			ILLINOIS FED. AID PROJECT		
CONTRACT NO. 78071					