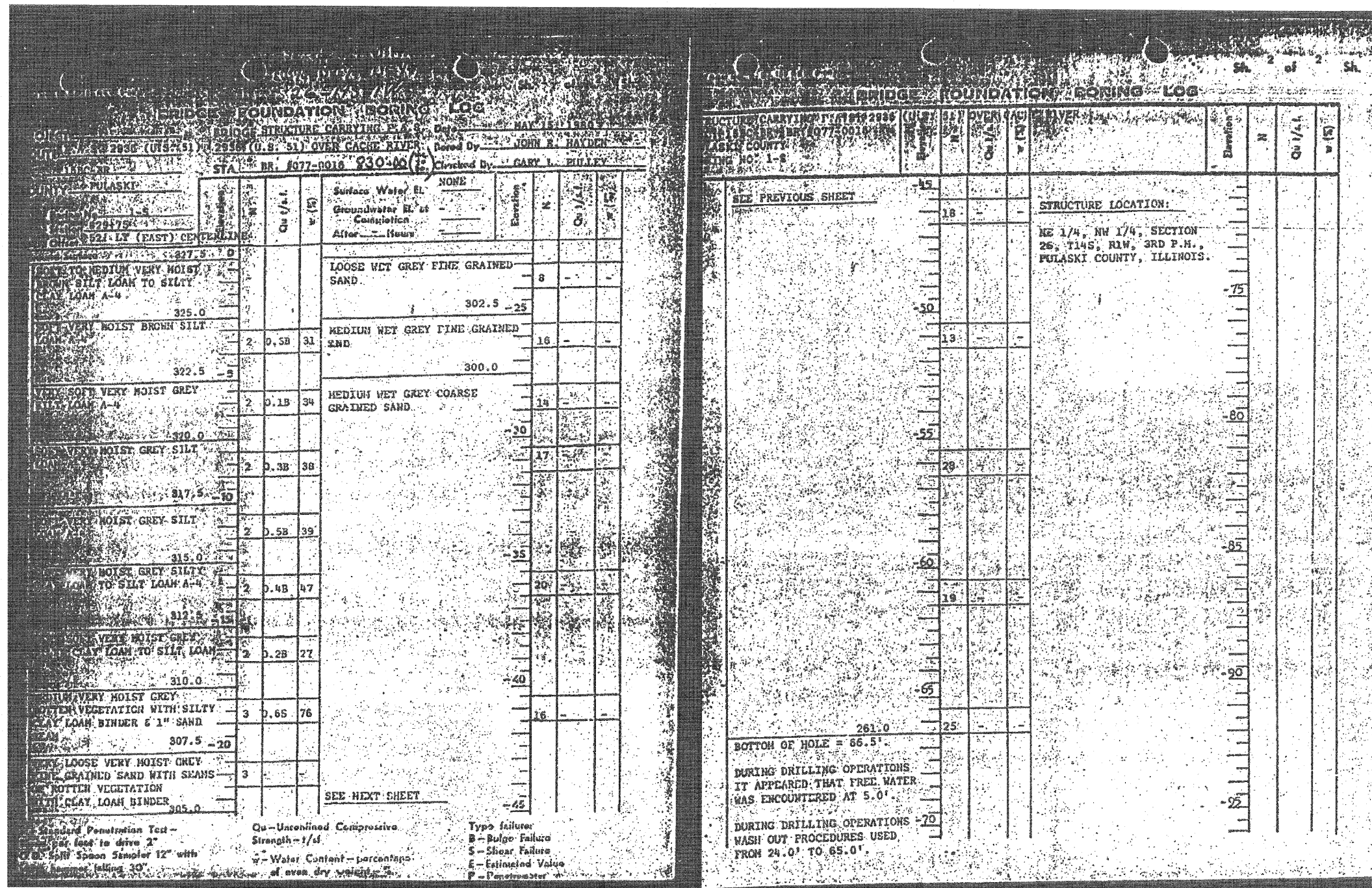


STATE OF ILLINOIS
DEPARTMENT OF TRANSPORTATION



ESCA
CONSULTANTS, INC.

DESIGNED BY:	MTD	01/10
DRAWN BY:	RJT	01/10
CHECKED BY:	MTD	01/10
APPROVED BY:	RDP	05/10

SOIL BORING LOG
STRUCTURE NO. 077-0016

SHEET NO. 20 20 SHEETS	F.A.S. RTE. 2936	SECTION 14BR-1	COUNTY PULASKI	TOTAL SHEETS 68	SHEET NO. 35
	CONTRACT NO. 78071				
FED. ROAD DIST. NO.		ILLINOIS	FED. AID PROJECT		