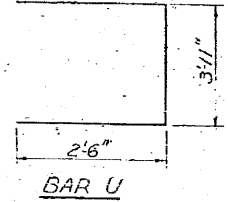
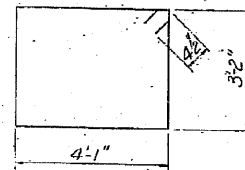
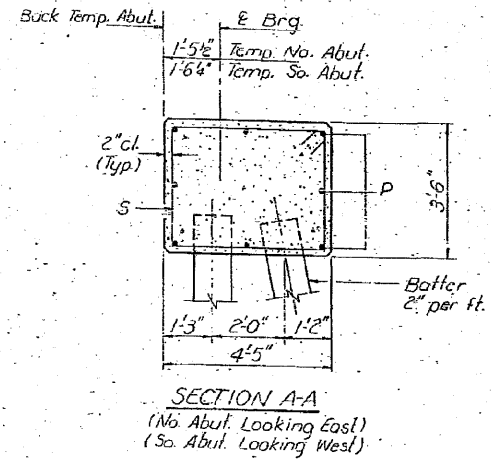
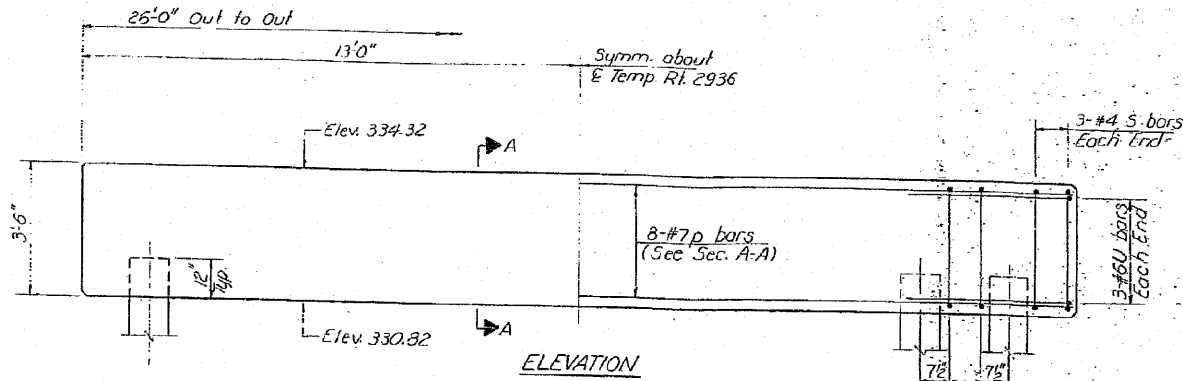


STATE OF ILLINOIS  
DEPARTMENT OF TRANSPORTATION

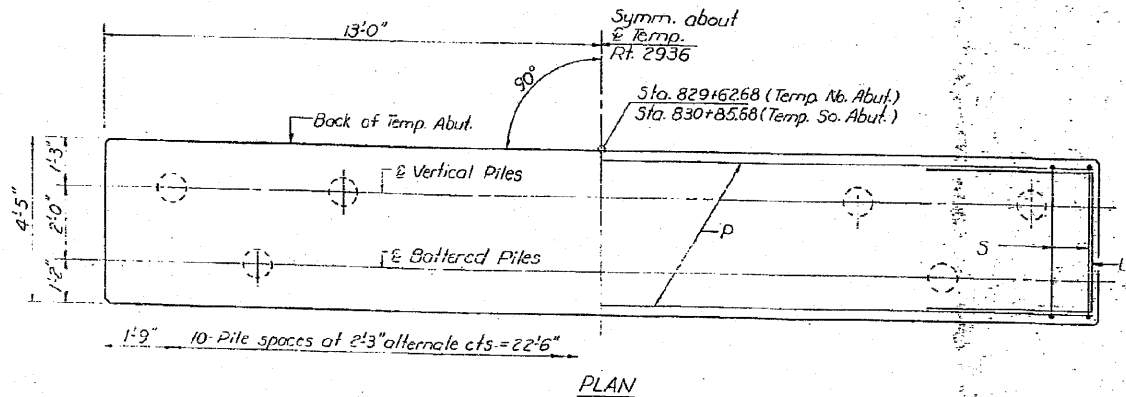
PROJECT NO.	SECTION	COUNTY	TOTAL SHEETS	SHEET NO.
158C-158C	PULASKI	20	13	10 SHEETS

PILE DATA (for information only)  
 Type: Creosoted  
 Capacity: 24 Tons  
 Est. Length: 46'  
 No. Required: 11



**BAR LIST ONE ABUTMENT**

Bar	No.	Size	Length	Shape
P	8	#7	25'-9"	—
S	26	#4	15'-3"	□
U	6	#6	8'-11"	□



Note:  
 Cost of temporary abutments shall be incidental to Temporary Bridge Complete (Truss Relocation)

DESIGNED: R. J. Has  
 CHECKED: R. J. Has  
 DRAWN: R. S. H.  
 CHECKED: R. S. H.  
 EXAMINED: *May 19 1982*  
 APPROVED: *Director of Highways*

ALTERNATE "A"  
 TEMPORARY ABUTMENTS  
 E.A.S. RT. 2936 SEC. 158C-BR  
 PULASKI COUNTY  
 STA. 829+89.15