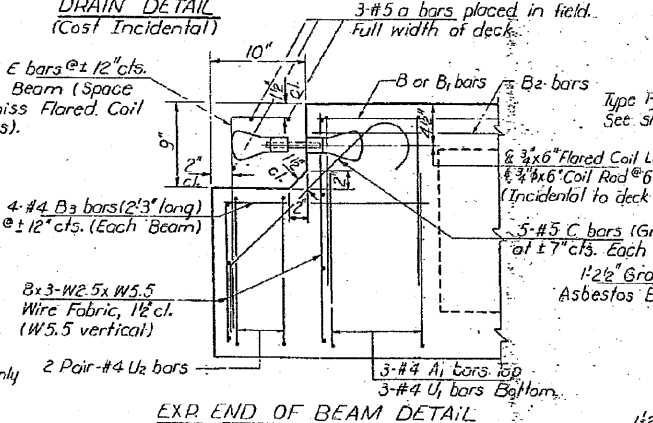
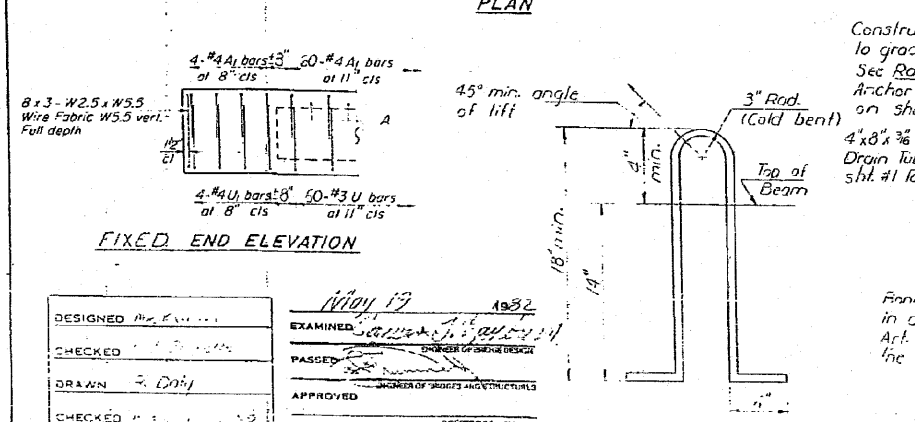
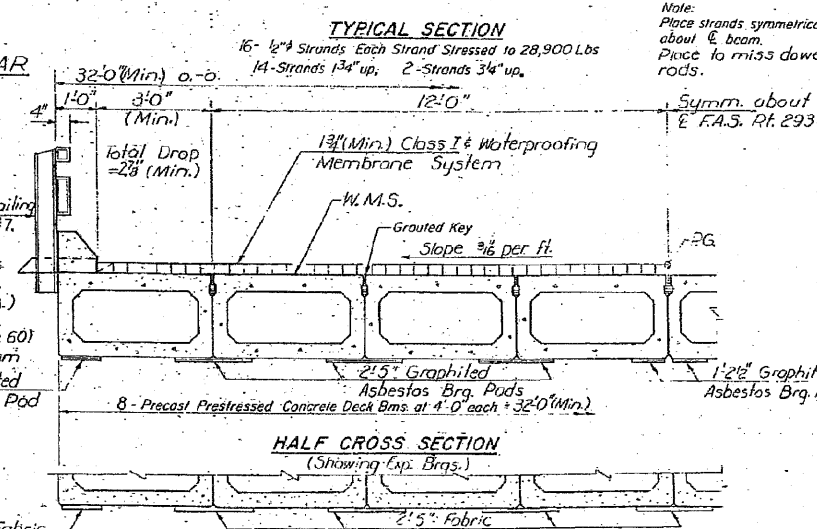
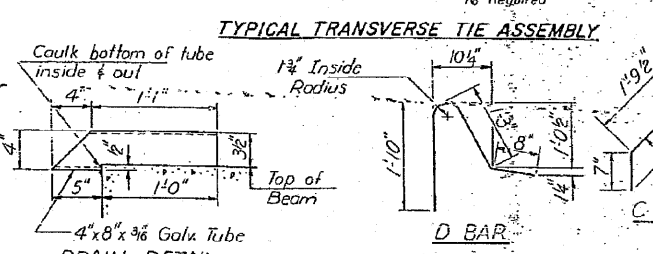
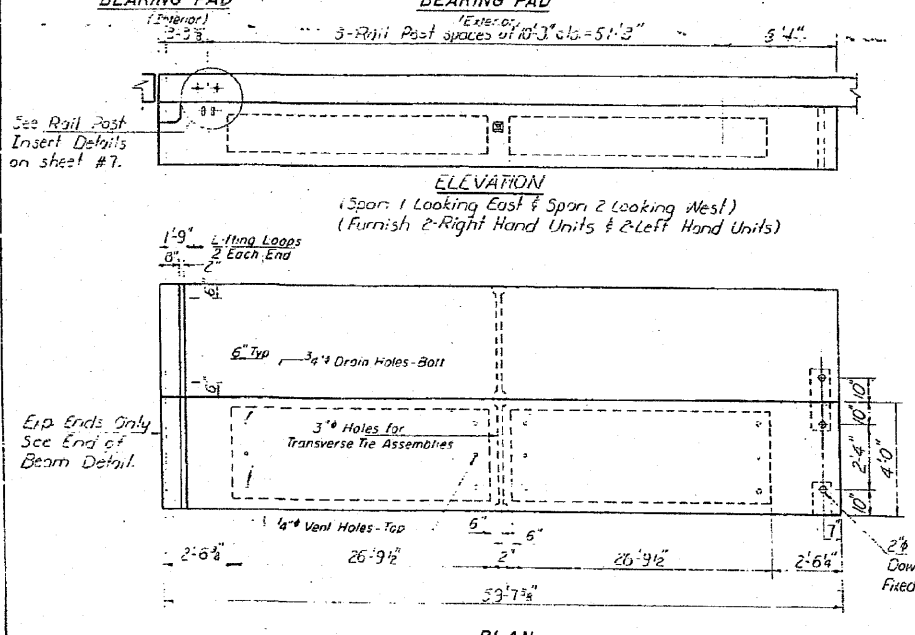
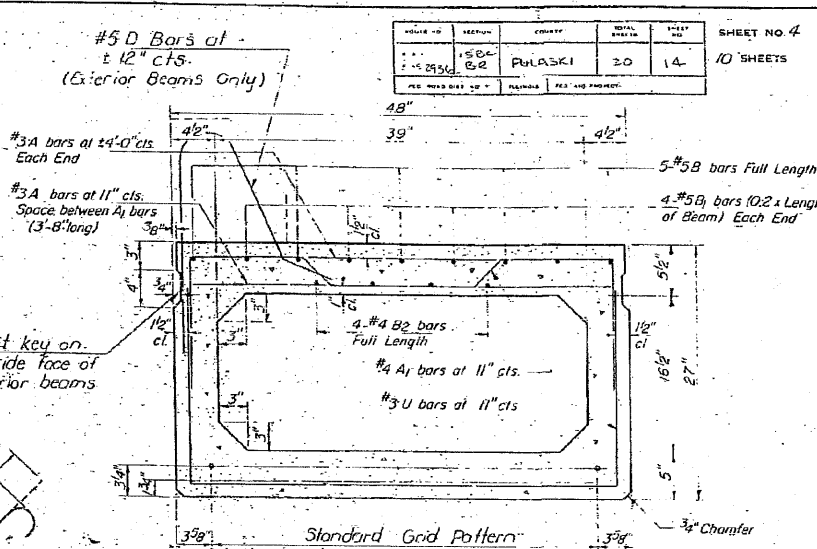
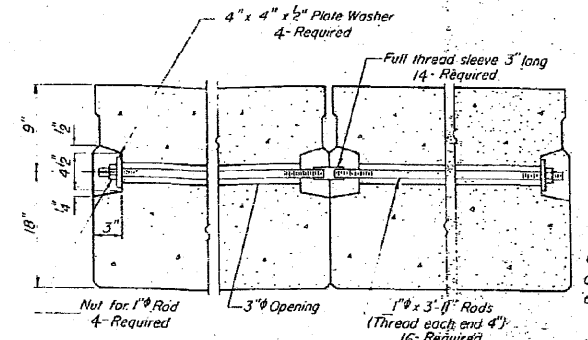
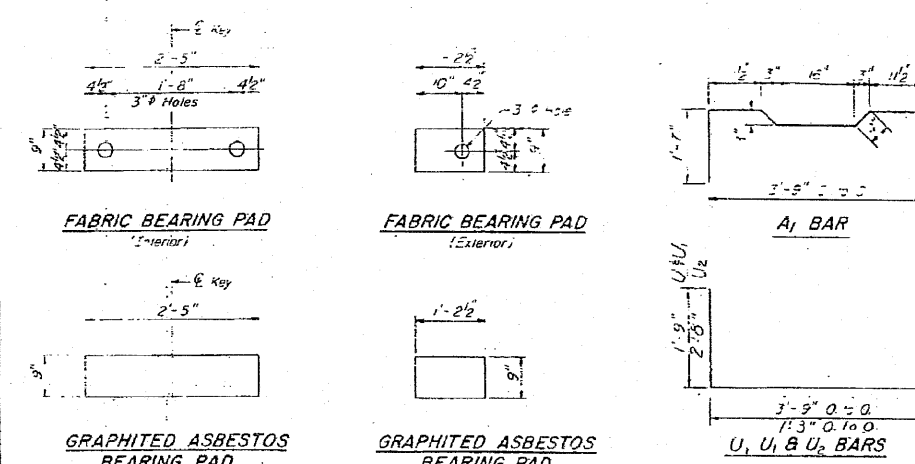


STATE OF ILLINOIS  
DEPARTMENT OF TRANSPORTATION

SHEET NO. 4		10 SHEETS	
DESIGNED BY	DAJ	CHECKED BY	MTD
DRAWN BY	DAJ	DATE	05/10



**NOTES**

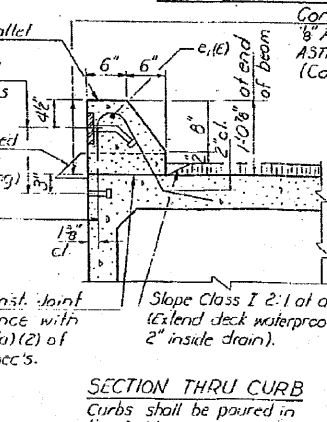
- Prestressing steel shall be non-galvanized high strength, stress-relieved 7-wire strand, Grade 270. The nominal diameter shall be 1/2" and the nominal cross-sectional area shall be 0.153 sq. in. Lifting loops shall be 3/4" diameter, 6x25 class wire rope with fiber core and shall have a minimum ultimate tensile strength of 46,000 lbs. or 3-1/8" 270 ksi strands as shown. The 1/4" rods in the transverse tie assembly shall be tightened to a snug fit and the threads set. Pockets that receive transverse tie bar on outside shall be filled with grout after transverse tie assembly is in place.
- Reinforcement bars shall conform to AASHTO M-31 or M-53, Grade 60. The bearing seat surfaces shall be adjusted by shimming to assure firm and even bearing. Two 1/8" fabric adjusting shims of the dimensions of the Exterior Bearing Pad shall be provided for each bearing.
- Keyway surfaces shall be cleaned to remove form oil or other bond breaking material prior to shipment of the beams. Cleaning shall be done by sandblasting the keyway areas between the top of the beam and the bottom edge of the key.
- Dowel rods shall be grouted after beams are in place and allowed to cure prior to grouting the shear keys.
- Class X Concrete for curbs and expansion pockets and a #4 e1(e) bars are billed on sheet #7.
- Reinforcement bars designated (E) shall be epoxy coated. See Special Provisions.

**BILL OF MATERIAL**

Item	Unit	Total
Precast Prestressed Concrete Deck Beams (27" Depth)	Sq. Ft.	3817

DESIGNED BY: DAJ  
CHECKED BY: MTD  
DRAWN BY: DAJ  
DATE: 05/10

APPROVED: [Signature]



SUPERSTRUCTURE  
E.A.S. RT. 2936 SEC. 15BC-BR  
PULASKI COUNTY  
STA. 829+89.15