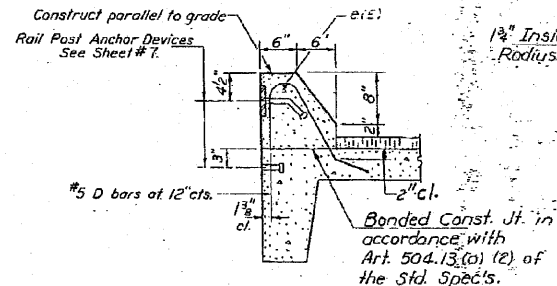
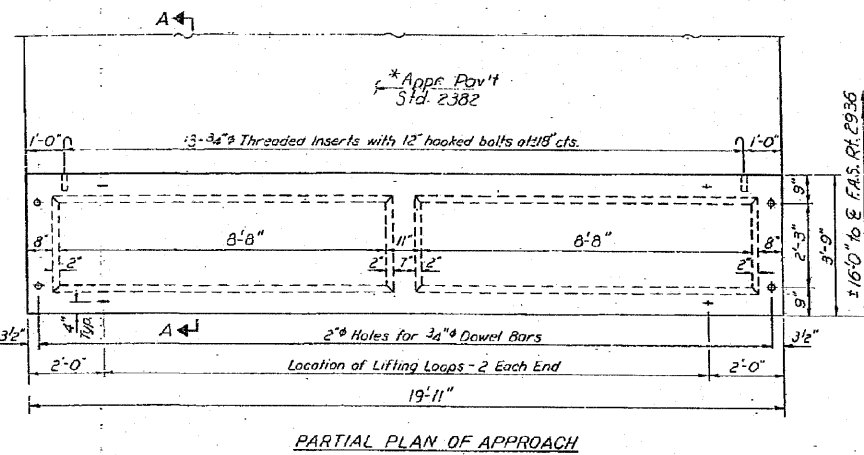
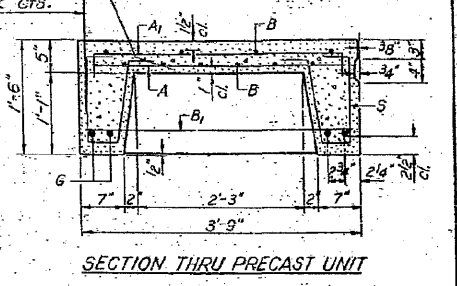
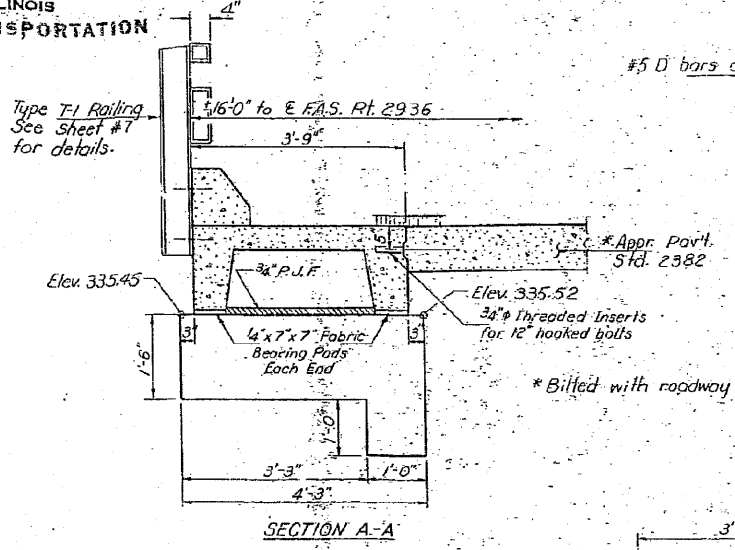
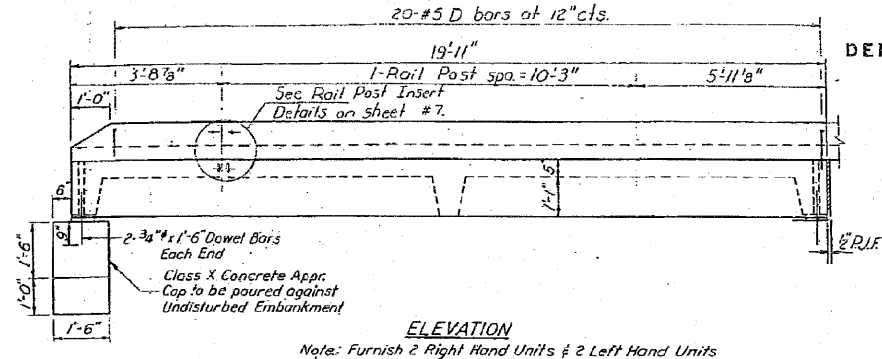


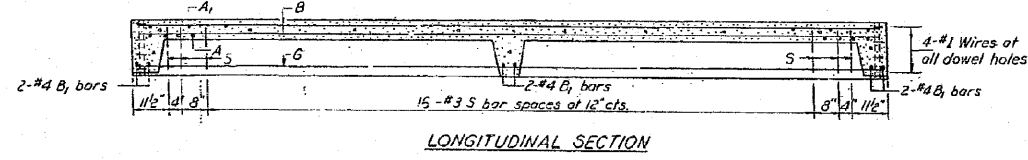
STATE OF ILLINOIS DEPARTMENT OF TRANSPORTATION

ROUTE NO.	SECTION	COUNTY	TOTAL SHEETS	SHEET NO.
158C	BR	PULASKI	20	16
10 SHEETS				

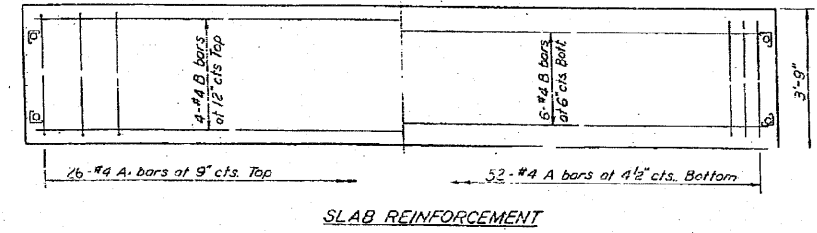


**BAR LIST - ONE UNIT**  
 Reinforcement to be cast into slab

Bar	No.	Size	Length	Shape
A	52	#4	3'-3"	—
A <sub>1</sub>	26	#4	4'-0"	—
B	10	#4	19'-6"	—
B <sub>1</sub>	6	#4	3'-6"	—
D	20	#5	3'-9"	—
G	4	#10	19'-6"	—
S	42	#3	3'-4"	—



**NOTES**  
 Unless otherwise approved by the Engineer, lifting-loops shall be 1/2" 6x25 class wire rope with fiber core and shall have a minimum ultimate strength of 2,000 lbs. or 2-1/2" 270 ksi strands as shown on sht. #4. Holes shall be drilled and anchor dowels grouted in place. Cost of reinforcement and accessories cast into the slab unit, bearing pads, furnishing, drilling for, placing and grouting anchor dowels and #4 hooked bolts is included in Unit bid price for "Precast Concrete Bridge Slab". The Precast Concrete Bridge Slab shall be erected and aligned with the exterior face of the exterior Deck Beam after Deck Beams are in final position. Reinforcement bars designated (L) shall be epoxy coated. See Special Provisions.



**BILL OF MATERIAL**

Item	Unit	Quantity
Precast Concrete Bridge Slab	Sq. Ft.	299
Class X Concrete	Cu. Yd.	1.6

DESIGNED: [Signature] 1987  
 CHECKED: [Signature]  
 DRAWN: R. Doty  
 CHECKED: [Signature]

EXAMINED: [Signature]  
 PASSED: [Signature]  
 APPROVED: [Signature]

APPROACH DETAILS  
 F.A.S. RT. 2936 SEC. 15 BC-BR  
 PULASKI COUNTY  
 STA. 829+82.15