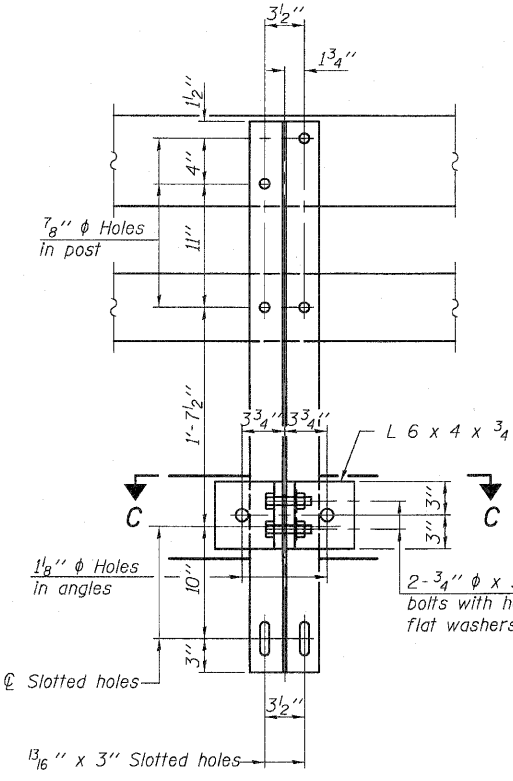
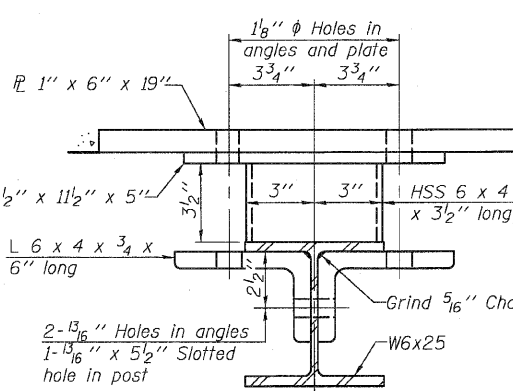


DETAIL OF 3/4" ϕ ROUND HEAD BOLT



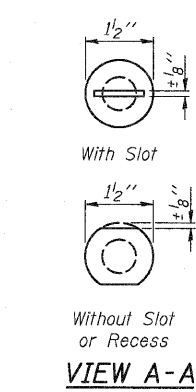
VIEW A-A



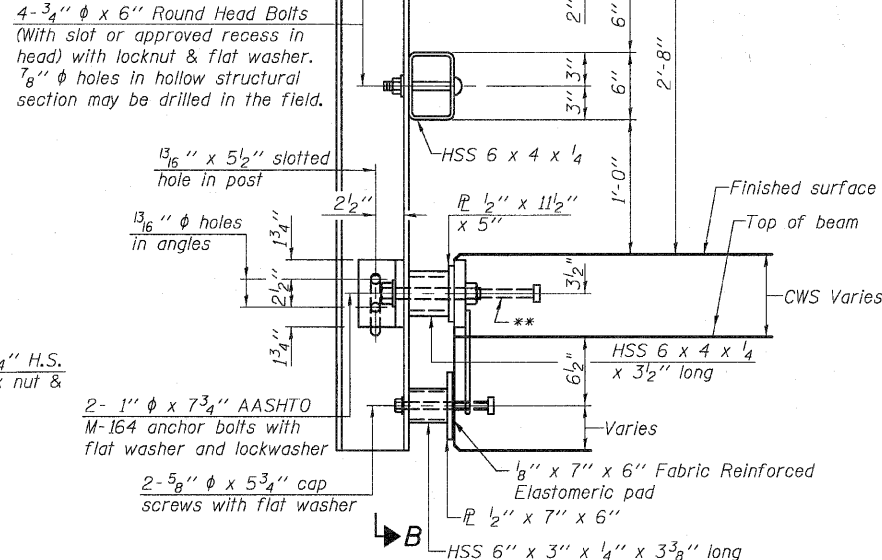
SECTION B-B



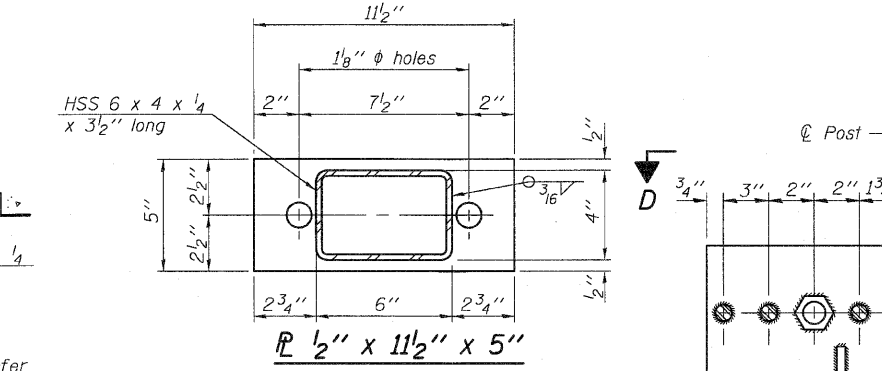
SECTION C-C



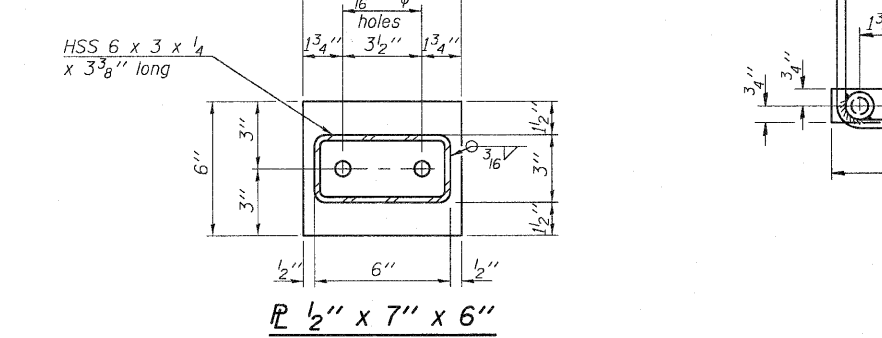
With Slot
Without Slot or Recess



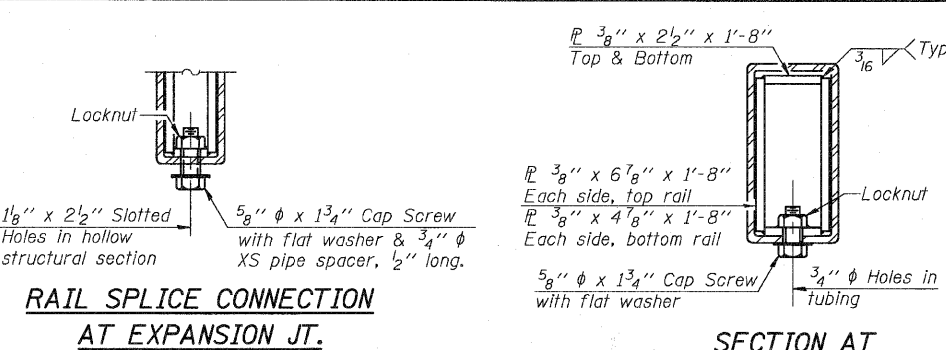
SECTION AT RAIL POST



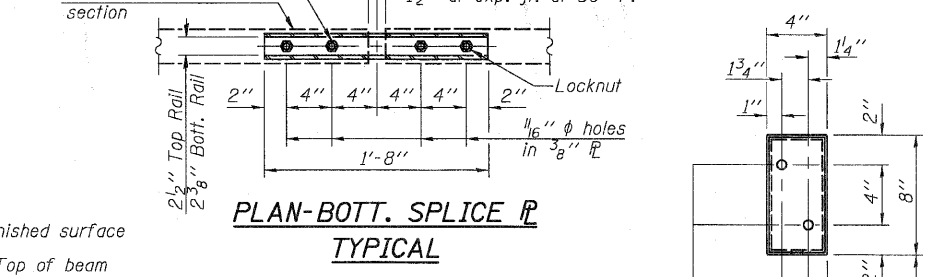
ANCHOR DEVICE



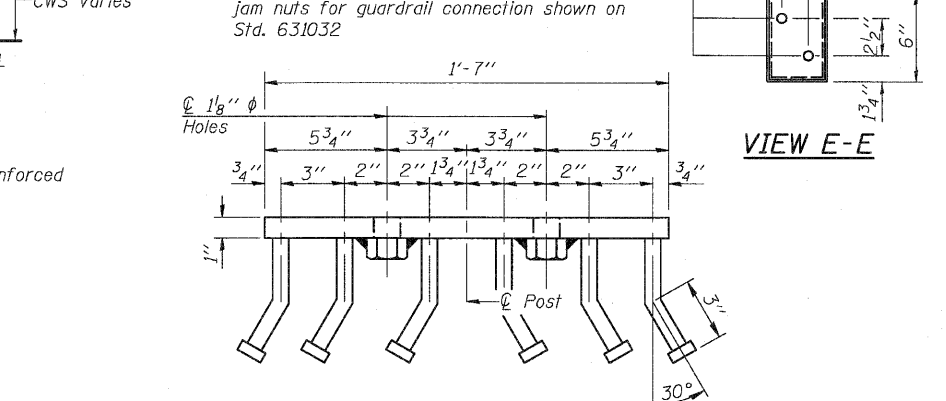
ANCHOR DEVICE



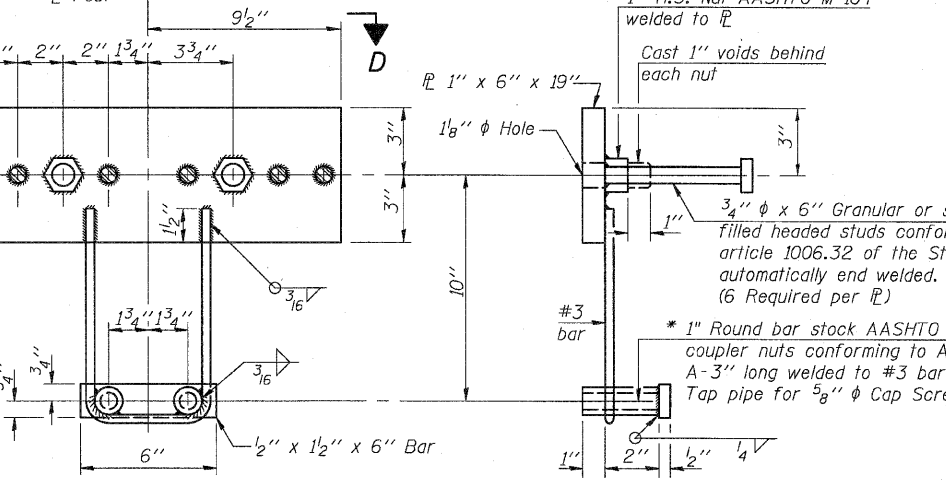
RAIL SPLICE CONNECTION AT EXPANSION JT.



PLAN-BOTT. SPLICE TYPICAL

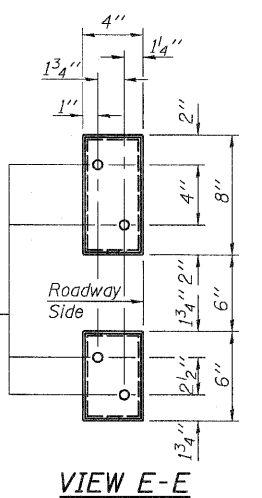


VIEW D-D

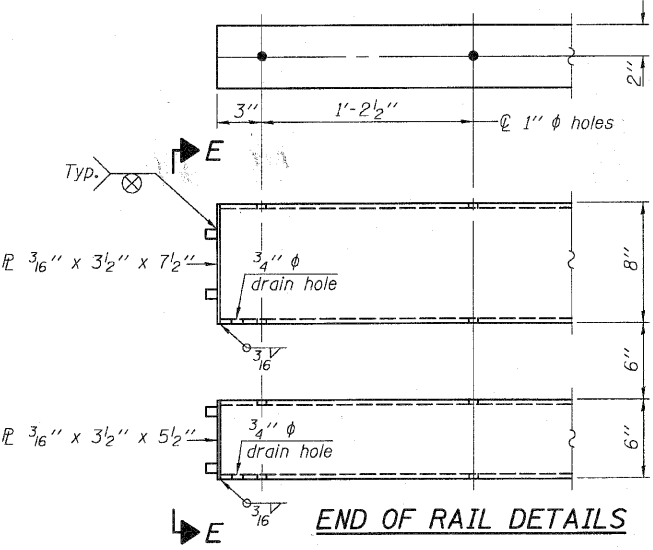


ANCHOR DEVICE

SECTION AT RAIL SPLICE



VIEW E-E



END OF RAIL DETAILS

*Threaded areas shall be plugged or blocked off during casting of beam. Galvanized after fabrication.

Notes:
All field drilled holes shall be coated with an approved zinc rich paint before erection.
For multi-span bridges, sufficient 1/4" x 6" x 1'-2" galvanized steel shims shall be provided to align rail between adjacent spans. Cost included with Steel Railing, Type SM.
Steel rail elements shall be galvanized according to Article 509.05 of the Standard Specifications.
** The studs of the anchor devices shall be placed below the top reinforcement bars and the outermost longitudinal reinforcement bar shall be placed directly above the studs of the rail post anchor device.

BILL OF MATERIAL

Item	Unit	Quantity
Steel Railing, Type SM	Foot	137

STEEL RAILING, TYPE SM WITH CONCRETE WEARING SURFACE STRUCTURE NO. 077-0035

<p>Coombe-Bloxdorf P.C. - CIVIL ENGINEERS - - STRUCTURAL ENGINEERS - - LAND SURVEYORS - Design Firm License No. 184-002703</p>	PROJECT NO. 07056-5 SCALE DATE 4/27/10 DESIGN BY CME DRAWN BY CFC CHECKED BY CME/MCB	SHEET NO. 5 10 SHEETS	F.A.S. RTE. 2936 SECTION 16BR-1	COUNTY PULASKI CONTRACT NO. 78071	TOTAL SHEETS 68 SHEET NO. 50
	FED. ROAD DIST. NO. ILLINOIS FED. AID PROJECT				