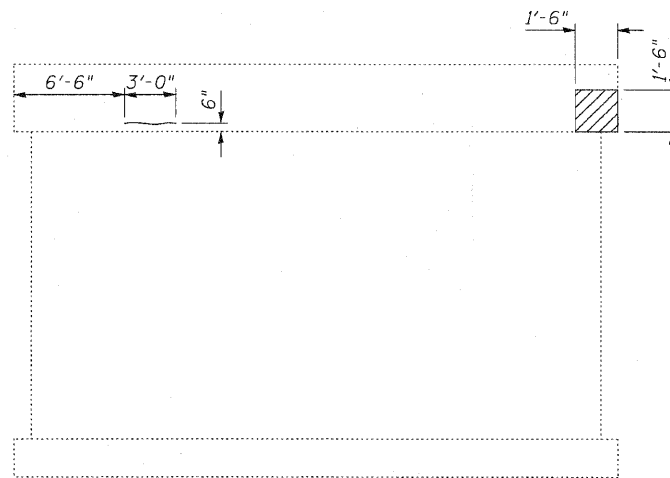
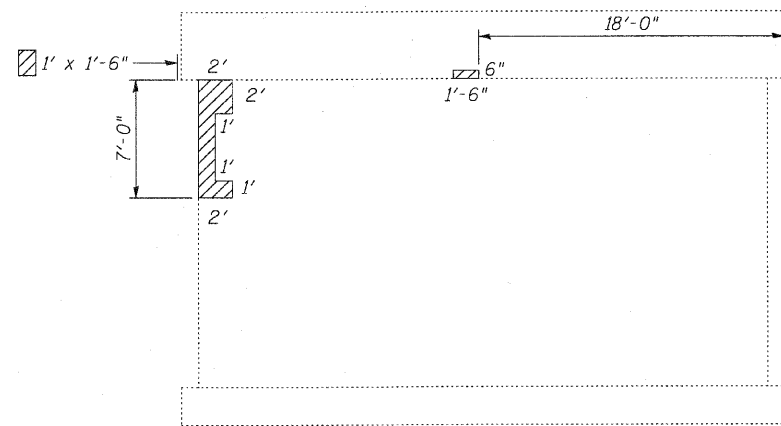


**NORTH FACE - PIER 1**  
Looking South

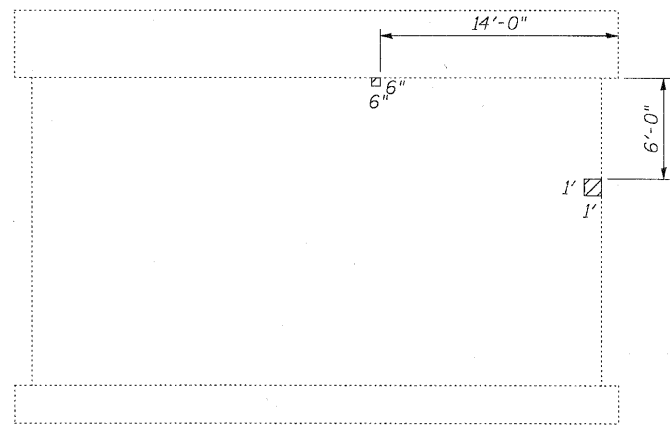
\* Additional Concrete Repair may be required at brace connection locations as directed by the Engineer. Cost included with Removal of Existing Superstructures.



**NORTH FACE - PIER 2**  
Looking South



**SOUTH FACE - PIER 1**  
Looking North



**SOUTH FACE - PIER 2**  
Looking North

**LEGEND**

- Denotes Structural Repair of Concrete (Depth Less Than or Equal to 5')
- Denotes Epoxy Crack Injection

**BILL OF MATERIAL  
TWO PIERS**

ITEM	UNIT	TOTAL
Structural Repair of Concrete (Depth Equal to or Less Than 5 In.)	Sq. Ft.	18
Epoxy Crack Injection	Ft.	3

**PIER REPAIR DETAILS  
STRUCTURE NO. 077-0035**

<b>Coombe-Bloxdorf P.C.</b> - CIVIL ENGINEERS - - STRUCTURAL ENGINEERS - - LAND SURVEYORS - Design Firm License No. 184-002703	PROJECT NO. 07056-5	SHEET NO. 10  10 SHEETS	F.A.S RTE. 2936	SECTION 16BR-1	COUNTY PULASKI	TOTAL SHEETS 68	SHEET NO. 55	
	SCALE DATE 4/27/10		CONTRACT NO. 78071					
	DESIGN BY CME							
	DRAWN BY CFC							
CHECKED BY CME/MCB	FED. ROAD DIST. NO.		ILLINOIS FED. AID PROJECT					