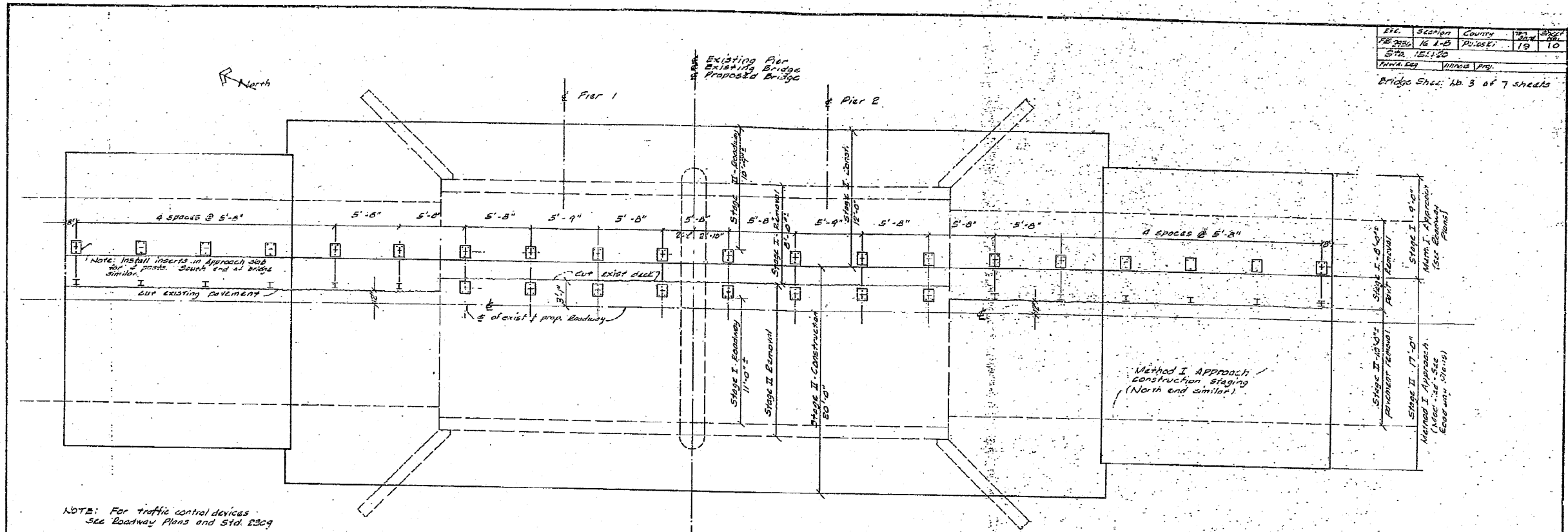
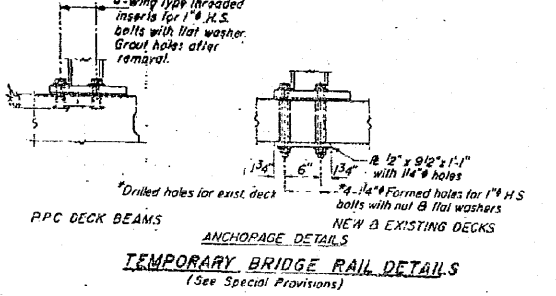
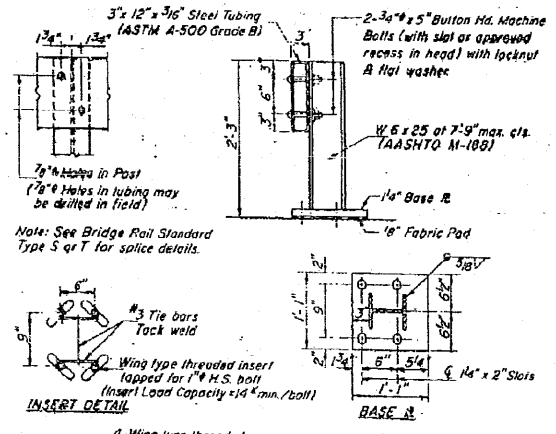


FILE NO.	SECTION	COUNTY	TOTAL SHEETS	SHEET NO.
161-20	161-1	PULASKI	68	10
DATE	PROJECT	DATE		
10/1/20	161-1	10/1/20		
DESIGNED BY	DESIGNED BY			
DAJ	DAJ			
BRIDGE SHEET NO. 3 OF 7 SHEETS				

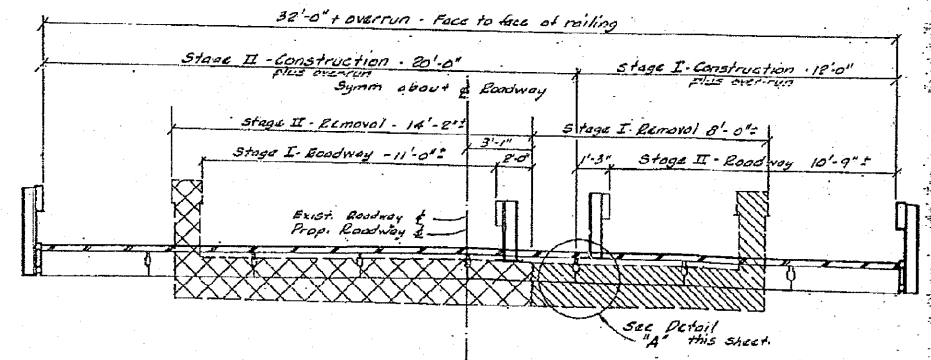


NOTE: For traffic control devices
See Roadway Plans and Std. R309

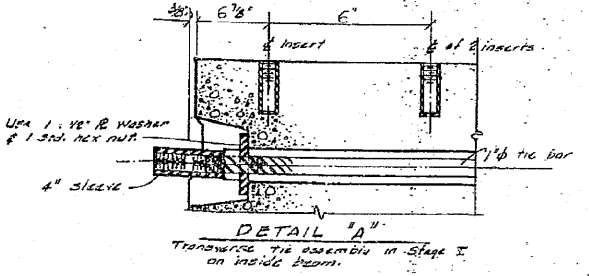


TEMPORARY BRIDGE RAIL DETAILS
(See Special Provisions)

PLAN OF TEMPORARY BRIDGE RAIL POSITIONING AND CONSTRUCTION STAGING



CROSS-SECTION
(Looking North, showing Stage Construction)



DETAIL 'A'
Transfer the assembly in Stage I on inside beams.

GENERAL NOTES:

- Existing structure to be removed utilizing Stage Construction & Temporary Bridge Rail. One-lane traffic shall be maintained during construction. See Special Provisions.
- Waterproofing & Bit. Conc. 'I' Surfacing for Stage I shall be delayed until after Stage II Const. has been completed, at which time traffic will be directed to facilitate waterproofing and surfacing of structure.
- Protective coating shall not be applied to surfaces receiving Waterproofing Membrane System.
- Threaded inserts for 3/4" bolts shall be installed in the Stage I Construction of the Method I Approach, located as shown above. All inserts shall be grouted after removal of temporary Bridge Rail.
- Item "Temporary Bridge Rail" shall be measured for payment in linear feet between end posts. Standard end connections shall be included, and will be measured in the unit price bid for "Temporary Bridge Rail". See Special Provisions.

CONSTRUCTION STAGING DETAILS

PROJECT
FAB 216 2930 (US-51) over Bear Creek
SECTION 161-1-B
PULASKI COUNTY, ILLINOIS
Station: 151+20

23-02-002 10/1/20-1978

FILE NAME: 097871-shb-ran13.dgn	USER NAME: HAS	DESIGNED: DAJ	REVISED:	STATE OF ILLINOIS DEPARTMENT OF TRANSPORTATION	EXISTING STRUCTURE PLANS	F.A.S. RTE.:	SECTION:	COUNTY:	TOTAL SHEETS:	SHEET NO.:	
		DRAWN: RJT/HAS	REVISED:			2936	16BR-1	PULASKI	68	58	
		CHECKED: MTD	REVISED:			CONTRACT NO. 78071					
		DATE: 05/10	REVISED:			FED. ROAD DIST. NO. [ILLINOIS] FED. AID PROJECT AID					

SCALE: SHEET NO. 3 OF 7 SHEETS STA. TO STA.