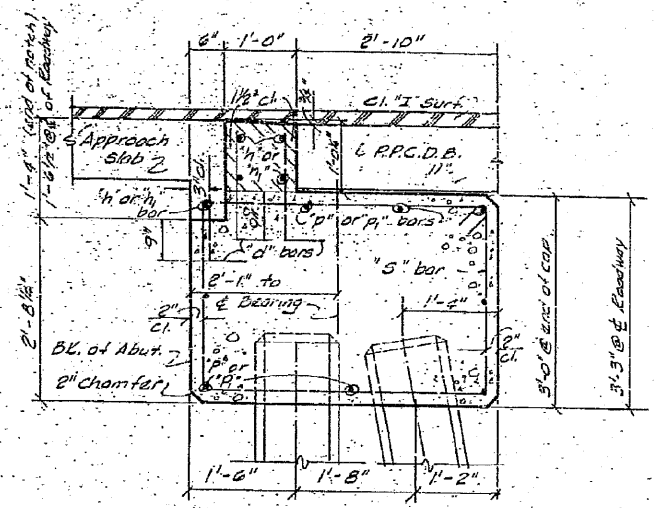


NOTE: Hatched areas are poured in field after case casing are in place.

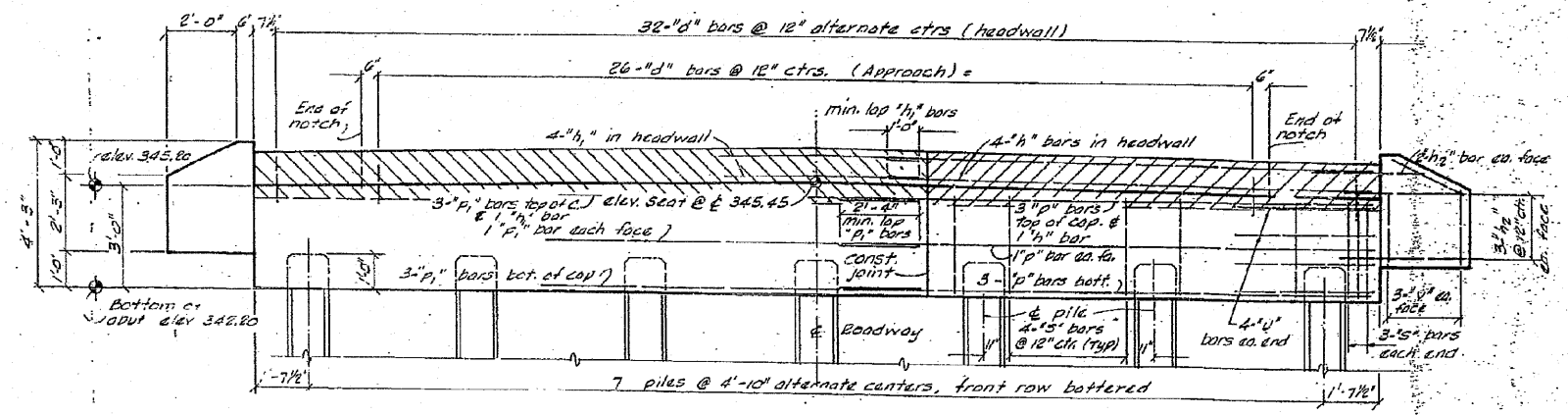
**ABUTMENT PLAN**  
(North abutment illustrated. South abutment similar but with construction joint also on east side of  $\pm$  of Roadway.)

FILE NO.	SECTION	COUNTY	SHEET NO.
16A-B	16A-B	PULASKI	19
STA.	151+20		
PULASKI COUNTY, ILLINOIS			

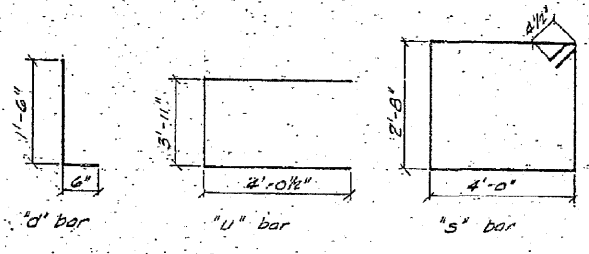
Bridge Sheet 5 of 7 Sheets



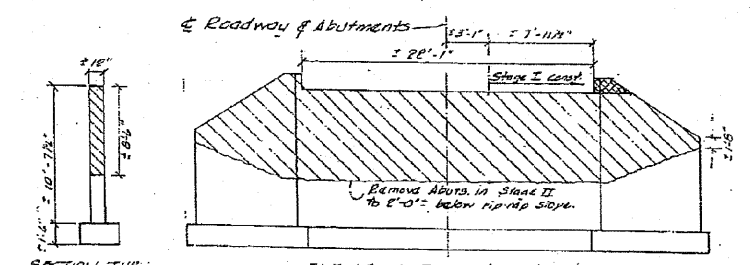
**SECTION @ ABUTMENTS**



**ABUTMENT ELEVATION**



ITEM	UNIT	QUANTITY
Concrete Removal	cu.yd.	23.0
Class "X" Concrete	cu.yd.	34.6
Reinforcement Bars	lbs.	2490
Furnishing Concrete Piles	lin. ft.	390
Driving Concrete Piles	lin. ft.	390
Test Pile - Concrete	each	1



**ELEVATION - EXIST. ABUT. (existing Norm)**  
Note: Cross-hatched portion of abut. to be removed during Stage I const. Hatched portion of exist. abut. to be removed during Stage II const.

**PILE DATA**  
Two Abutments  
TYPE: Concrete  
No. REQ'D: 14  
CAPACITY: 25 tons  
Estimated length: 30'  
Note: No. of piles required includes one test pile in permanent location at North Abutment.

BAR	NO.	SIZE	LENGTH	SHAPE
d	110	#4	2'-0"	
h	10	#4	13'-9"	
h <sub>1</sub>	10	#4	14'-3"	
h <sub>2</sub>	40	#4	5'-2"	
p	16	#7	15'-3"	
p <sub>1</sub>	16	#7	14'-9"	
s	60	#4	12'-1"	
u	16	#0	12'-0"	
v	24	#4	2'-5"	

**ABUTMENT DETAILS**  
PROJECT  
FAS E16.2936 (U.S.1) over Bear Creek  
SECTION 16 A-B  
Pulaski County, Illinois  
Station 151+20

05-02.00d November 1978