

INDEX OF SHEETS

SHEET NO.	DESCRIPTION
1	COVER SHEET
2	SUMMARY OF QTYS, GENERAL NOTES
3	SCHEDULE OF QTYS
4	TYPICAL SECTIONS
5	PLAN & PROFILE
6	DEMOLITION PLAN
7	PAVEMENT MARKING PLAN
8 - 9	EROSION CONTROL PLAN
10 - 11	CONT. REINF. PCC PAVEMENT 8"
12 - 13	APPROACH PAVEMENT ELEVATIONS
14 - 15	GUARDRAIL & TERMINALS
16-43	BRIDGE PLANS
27	NOT USED

LIST OF STANDARD DRAWINGS

STANDARD NO.	DESCRIPTION
000001 - 05	STANDARD SYMBOLS, ABBREVIATIONS, AND PATTERNS
280001 - 05	TEMPORARY EROSION CONTROL SYSTEMS
515001 - 03	NAME PLATE FOR BRIDGES
630001 - 08	STEEL PLATE BEAM GUARDRAIL
631011 - 06	TRAFFIC BARRIER TERMINAL TYPE 2
701006 - 03	OFF ROAD OPERATIONS, 2L, 2W, 15' TO 24' FROM PAVEMENT EDGE
701301 - 03	LANE CLOSURE, 2L, 2W, SHORT TIME OPERATIONS
701901 - 01	TRAFFIC CONTROL DEVICES
720001 - 01	SIGN PANEL MOUNTING DETAILS
720006 - 02	SIGN PANEL ERECTION DETAILS
729001 - 01	APPLICATIONS OF TYPES A & B METAL POSTS (FOR SIGNS AND MARKERS)
780001 - 02	TYPICAL PAVEMENT MARKINGS
BLR 21 - 8	TYPICAL APPLICATION OF TRAFFIC CONTROL DEVICES FOR CONSTRUCTION OF RURAL LOCAL HIGHWAYS
BLR 23 - 3	TRAFFIC BARRIER TERMINAL TYPE 1

COMMITMENTS-NONE



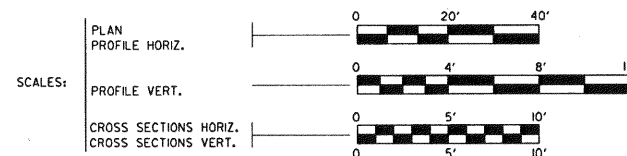
Kelly Jo Hoffmann
 KELLY JO HOFFMANN
 Illinois Licensed Professional Engineer Number 58725
 License Expires November 30, 2011

FOR JOINT UTILITY INFORMATION
 CALL TOLL FREE 1-800-892-0123
 CAT. #033078-000

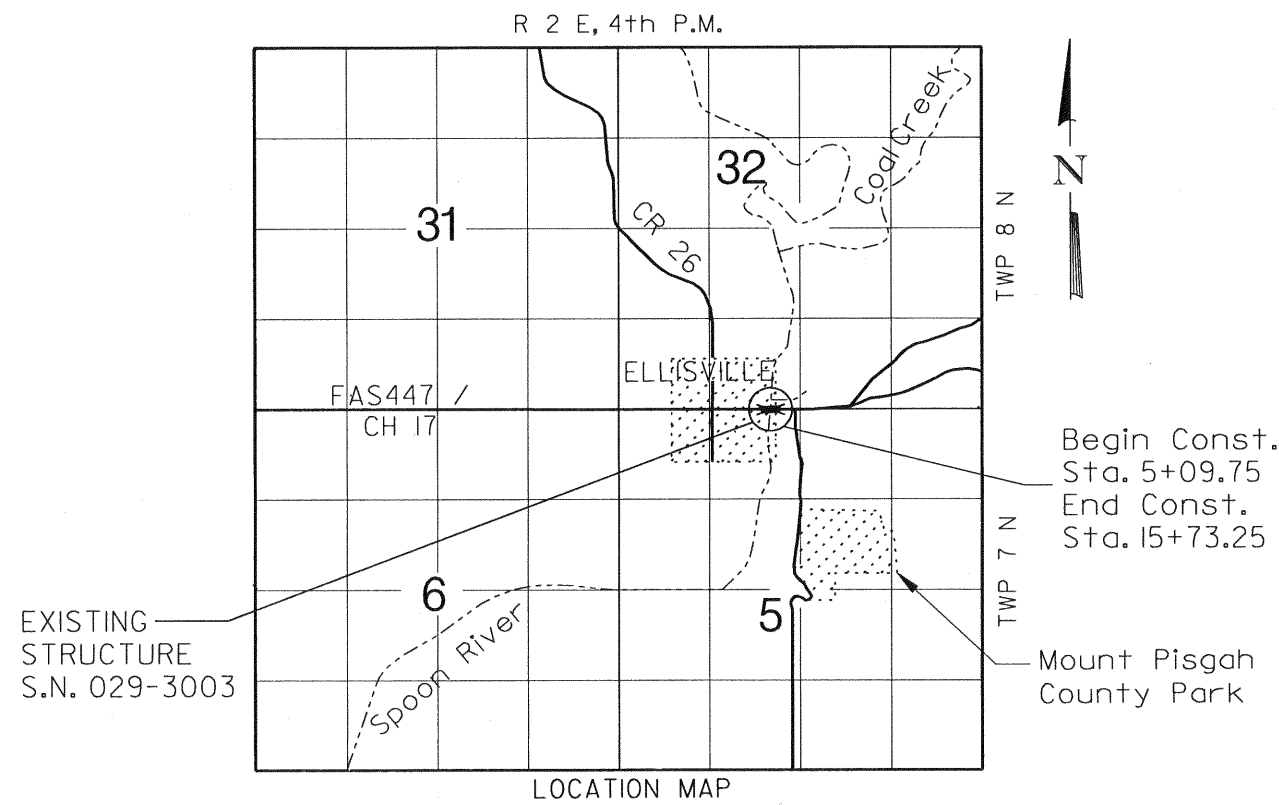
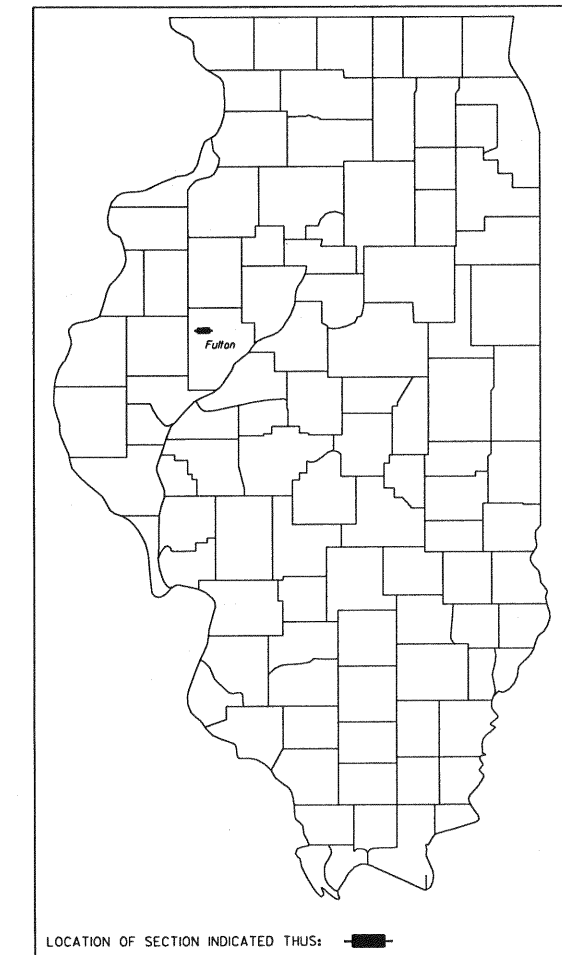
STATE OF ILLINOIS DEPARTMENT OF TRANSPORTATION PLANS FOR PROPOSED BRIDGE REPLACEMENT

CONTRACT #89498

ROUTE NO.	SECTION	COUNTY	TOTAL SHEETS	SHEET
FAS 447	*	FULTON	42	1
FED. ROAD DIST. NO. 7	ILLINOIS	FED. AID PROJECT	*08-00121-01-BR	



FULTON COUNTY
 SECTION 08-00121-01-BR
 BRS 0447(107)
 FAS 447
 COUNTY HIGHWAY 17
 BRIDGE REPLACEMENT AND
 REHABILITATION PROGRAM
 C-94-050-08



ADT = 600 (CURRENT), < 900 (DESIGN)
 FUNCTIONAL CLASS = MAJOR COLLECTOR

NET LENGTH OF SECTION = 1063.50 FEET = 0.201 MILES

APPROVED *Feb 14* 2010
William Kuhn
 WILLIAM KUHN, PE FULTON COUNTY ENGINEER

PASSED *08/10/10* 2010
 DISTRICT FOUR LOCAL ENGINEER

Releasing For Bid Based on Limited Review *Aug 6* 2010
 DEPUTY DIRECTOR OF HIGHWAYS,
 REGION THREE ENGINEER
 STATE OF ILLINOIS
 DEPARTMENT OF TRANSPORTATION

FRAUENHÖFFER

Frauenhoffer and Associates, P.C. Consulting Engineers
 3002 Crossing Court Champaign, IL 61822 217-351-6268