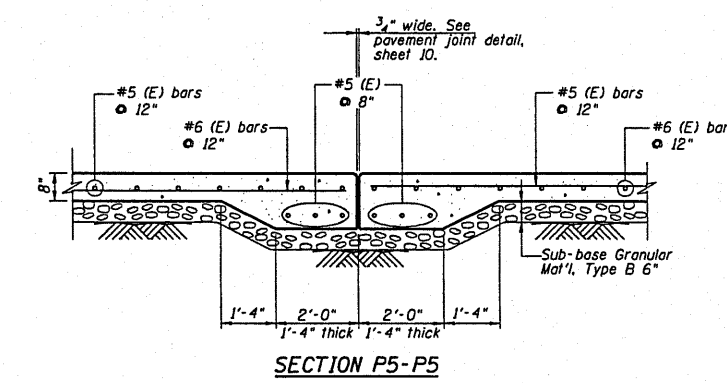
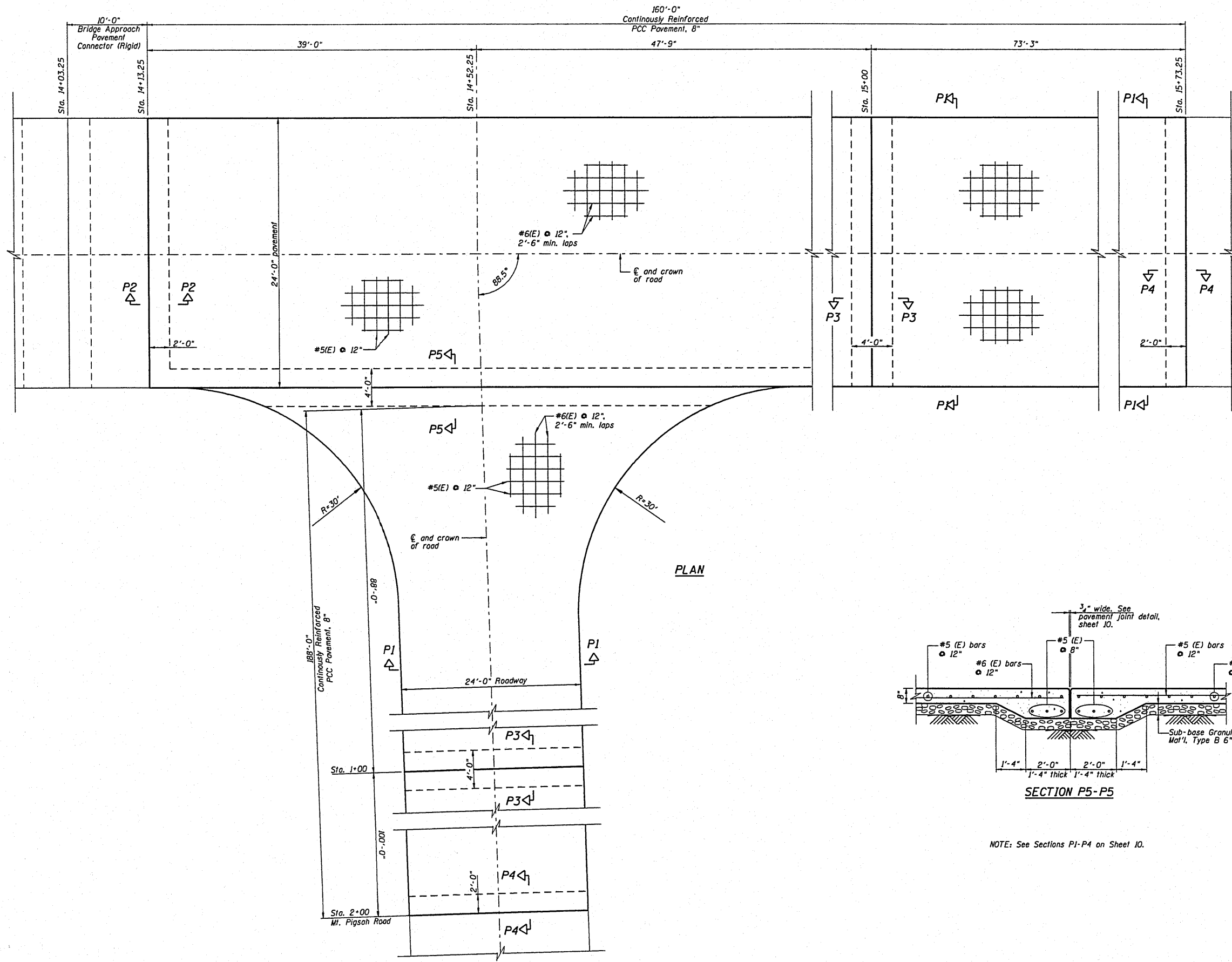


ROUTE NO.	SECTION	COUNTY	SHEET	TOTAL SHEETS
FAS 447	*	Fulton	43	11
FED. ROAD DIST. NO. 1	ILLINOIS	FED. AID PROJECT		
			*08-00121-01-BR	



NOTE: See Sections P1-P4 on Sheet 10.

DSGN	K.J. Hoffmann				
DR	K.J. Hoffmann				
CHK	J.R. Wolf				
APVD	J.A. Frauenhoffer	NO.	DATE	REVISION	BY

FRAUENHOFFER
 Frauenhoffer and Associates, P.C. Consulting Engineers
 3002 Crossing Court Champaign, IL 61822 217-351-6268

CONT. REINF. PCC PAVEMENT, 8" - SHEET 2 of 2		SHEET 11
FAS 1447 (C.H. 17) OVER SPOON RIVER		DWG. NO. 8015CRCP.dgn
SECTION 08-00121-01-BR		DATE JAN 2010
FULTON COUNTY		PROJ. NO. 8015