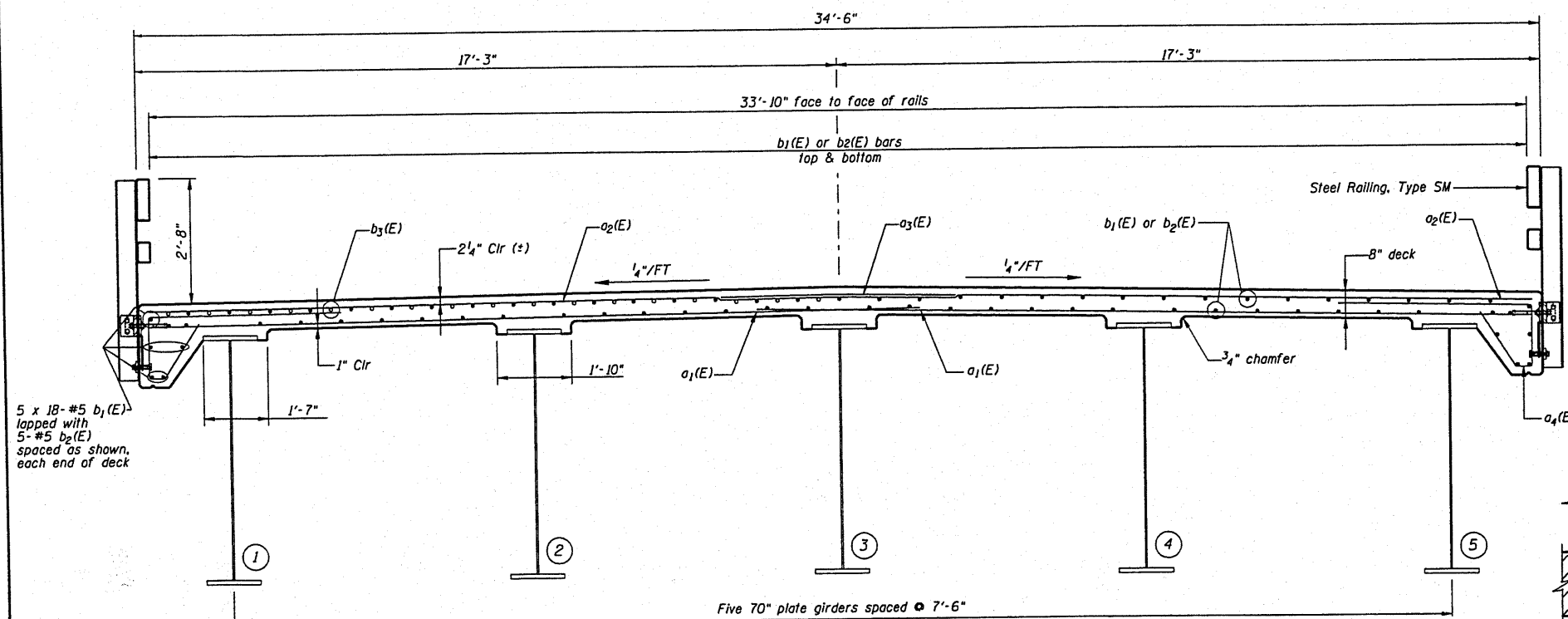
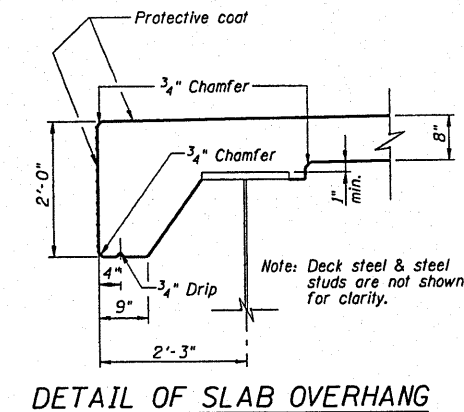


PROJECT NO.	SECTION	COUNT	SHEET	TOTAL
FAS 447		Fulton	43	21
REV. NO.	DATE	BY	CHK	APP

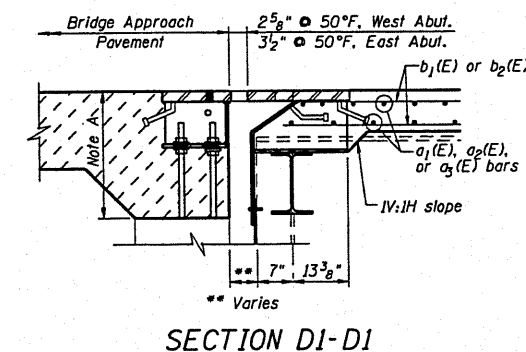
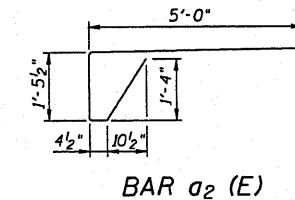
*08-00121-01-BR



Over Piers At Mid-Span
PROPOSED SUPERSTRUCTURE SECTION
 Looking Upstation (East)



DETAIL OF SLAB OVERHANG

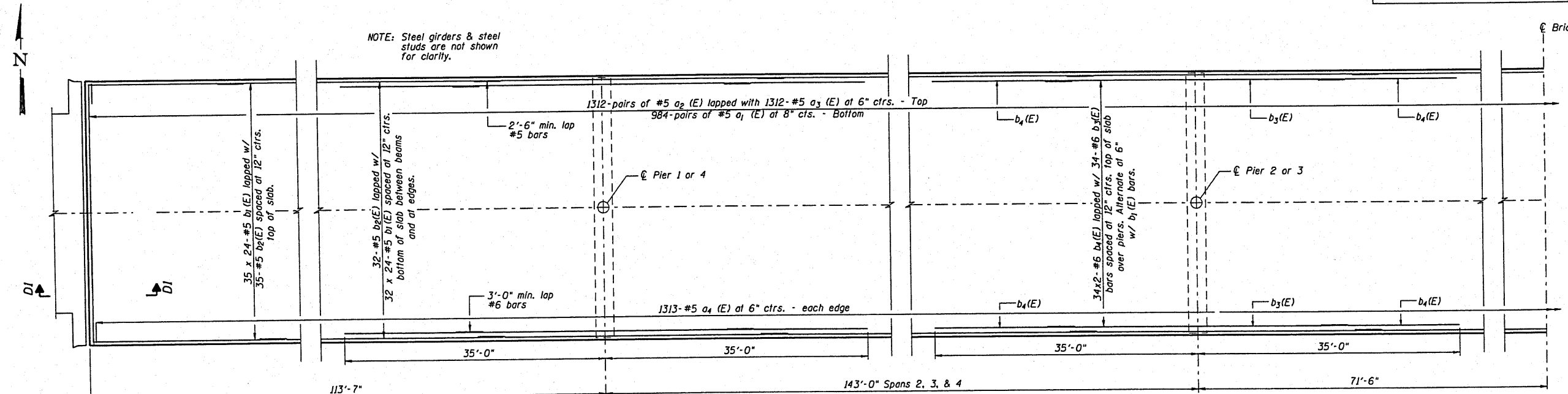
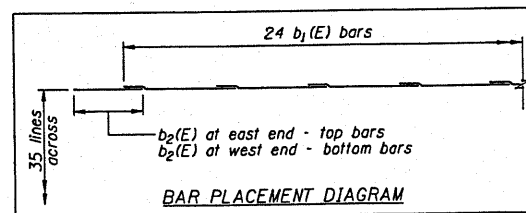


SECTION D1-D1

BILL OF MATERIAL SUPERSTRUCTURE

Bar	No.	Size	Length	Shape
a ₁ (E)	1968	# 5	19'-3"	—
a ₂ (E)	2624	# 5	17'-0"	—
a ₃ (E)	1312	# 5	5'-9"	—
a ₄ (E)	2626	# 5	8'-5"	—
b ₁ (E)	1800	# 5	29'-3"	—
b ₂ (E)	75	# 5	20'-0"	—
b ₃ (E)	136	# 6	36'-0"	—
b ₄ (E)	272	# 6	20'-0"	—
Reinforcement Bars, Epoxy Coated			Lbs.	189,000
Concrete Superstructure			Cu. Yds.	675
Protective Coat			Sq. Yd.	2,807
Bridge Deck Grooving			Sq. Yd.	2.516

Notes: Reinforcement bars designated (E) shall be epoxy coated.
 Bars indicated thus "35 x 24 - #5 b etc..." indicates 35 lines of bars with 24 lengths per line. See Bar Placement Diagram.
 Holes shall be cut in the steel pedestals to accommodate the placement of the a(E) bars.
 See Sheets 24-26 for Finger Plate Expansion Joint.
 See Sheet 42 for Bridge Approach Pavement.
 Note A: Area to be poured after superstructure forms have been removed. Quantity of concrete to be included with Concrete Superstructure for the Bridge Approach Pavement.



HALF PLAN
 Symmetrical about C

NOTE: Steel girders & steel studs are not shown for clarity.

DSGN	K.J. Hoffmann				
DR	K.J. Hoffmann				
CHK	J.R. Wolf				
APVD	J.A. Fraenhoffer	NO.	DATE	REVISION	BY

FRAUENHOFFER
 Fraenhoffer and Associates, P.C. Consulting Engineers
 3002 Crossing Court Champaign, IL 61822 217-351-6268

DECK REINFORCING
 FAS 1447 (C.H. 17) OVER SPOON RIVER
 SECTION 08-00121-01-BR
 FULTON COUNTY

SHEET	21
DWG NO.	B015-sup.dgn
DATE	JAN 2010
PROJ NO.	B015