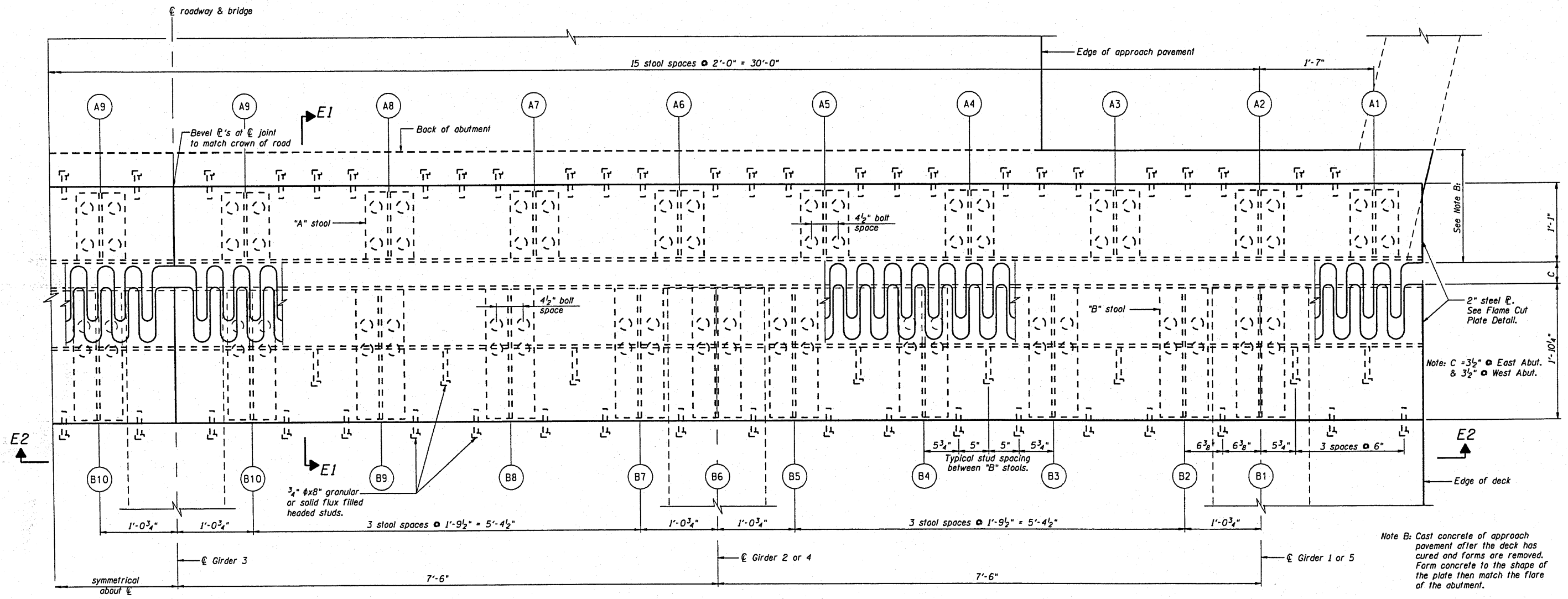


ROUTE NO.	SECTION	COUNTY	SHEET	TOTAL SHEETS
FAS 447	*	Fullton	43	24
FED. ROAD DIST. NO. 1	ILLINOIS	FED. AID PROJECT		

*08-00121-01-BR



FINGER PLATE EXPANSION JOINT PLAN

DSGN	K.J. Hoffmann				
DR	K.J. Hoffmann				
CHK	J.A. Fraunhofer				
APVD	J.A. Fraunhofer	NO.	DATE	REVISION	BY

FRAUENHÖFFER
 Fraunhofer and Associates, P.C. Consulting Engineers
 3002 Crossing Court Champaign, IL 61822 217-351-6268

FINGER PLATE EXPANSION JOINT-SHEET 1 OF 3		SHEET 24
FAS 447 (C.H. 17) OVER SPOON RIVER		DWG NO. EXP.dgn
SECTION 08-00121-01-BR		DATE JAN 2010
FULTON COUNTY		PROJ NO. 8015