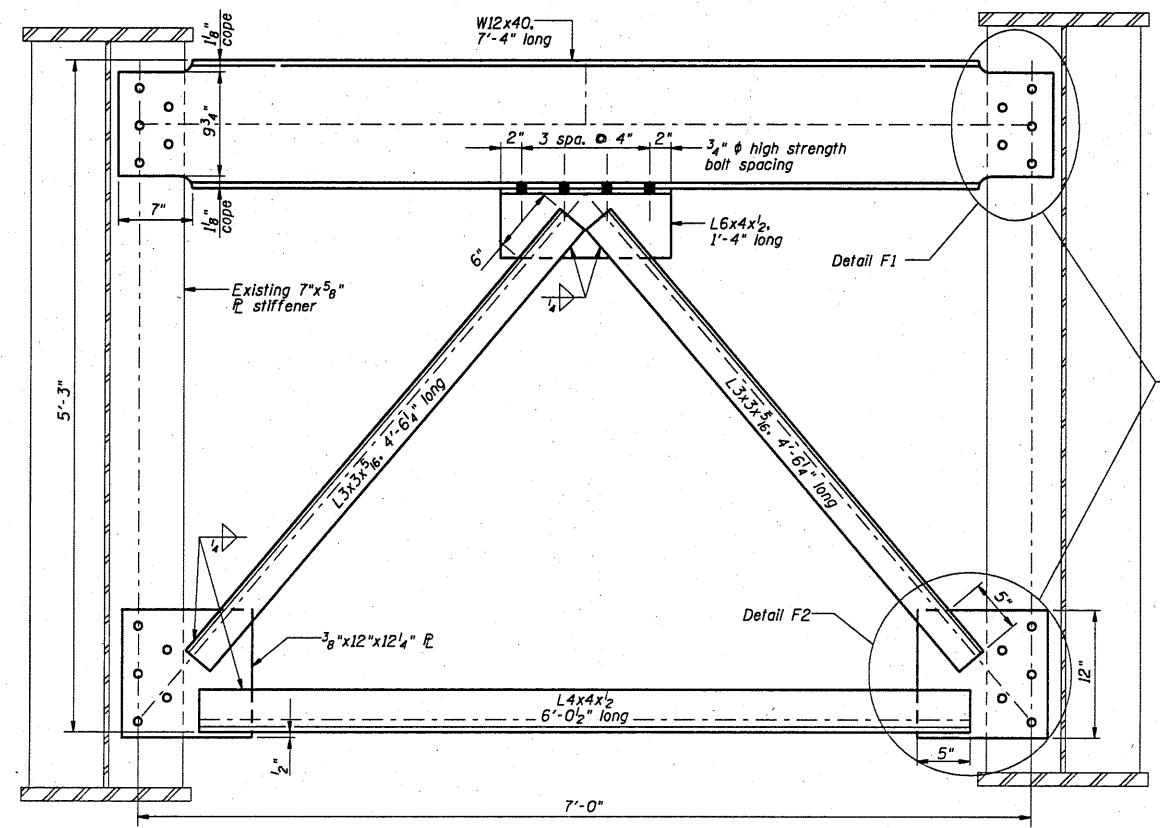
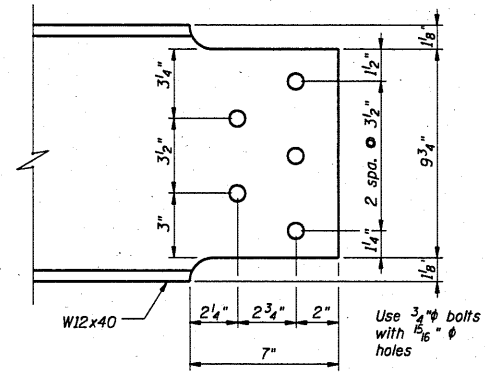


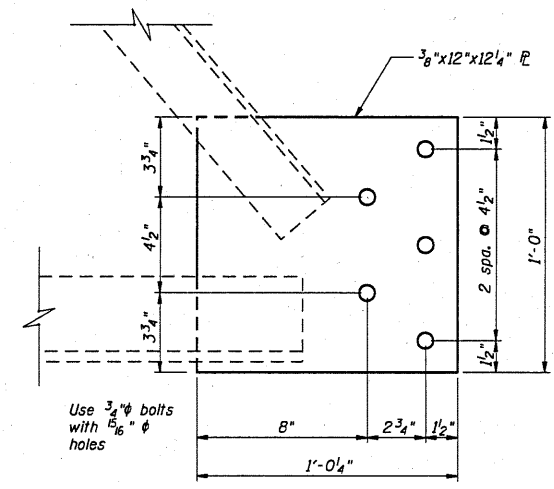
ROUTE NO.	SECTION	COUNTY	SHEET	TOTAL
FAS 447	#	Fulton	43	30
FED. ROAD DIST. NO. 7	ILLINOIS	FED. AID PROJECT		



Prior to fabrication, the Contractor shall measure the existing hole pattern, and adjust dimensions shown. The Contractor shall bolt new cross frames to existing web stiffeners using existing stiffener bolt hole pattern. Magnetic drill and ream holes as required. Torch cutting is prohibited.

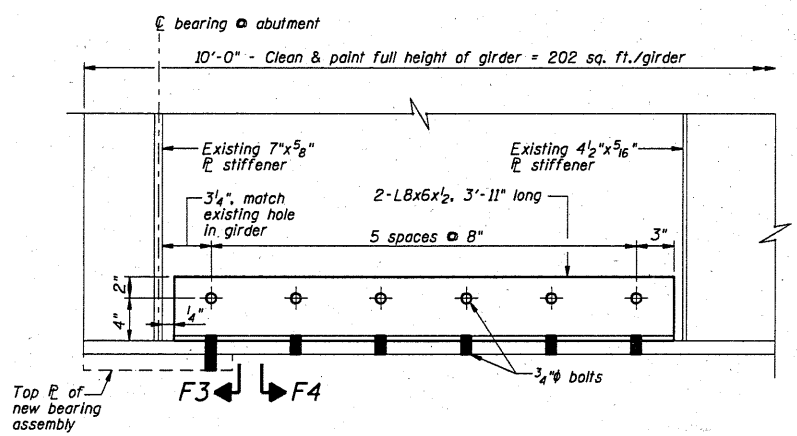


**DETAIL F1**  
Match existing bolt pattern



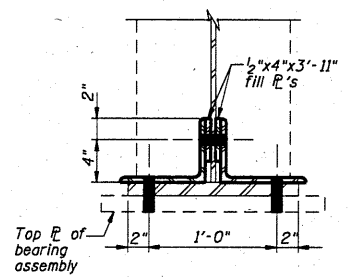
**DETAIL F2**  
Match existing bolt pattern

**NEW CROSS FRAMES AT ABUTMENTS**  
8 total cross frame locations

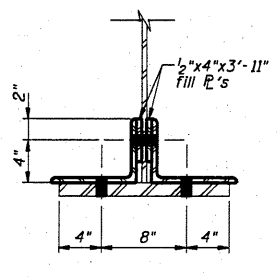


**END REINFORCEMENT DETAIL**  
10 total reinforcement locations

Bolt holes in existing girders shall be magnetically drilled.



**SECTION F3**  
Bolt spacing at bearing



**SECTION F4**

**NOTES:**

The Contractor shall field verify dimensions before ordering any materials.

All new structural steel, including the cross frames, angles and plates shall be hot dipped galvanized meeting the requirements of AASHTO M111 or M232, as applicable. High strength bolts shall be galvanized according to AASHTO M298 Class 50. The cost of the galvanization shall be included in the cost of Furnishing and Erecting Structural Steel.

Total area of cleaning and painting shall be = 2020 sq. ft.

**BILL OF MATERIAL**

Item	Unit	Quantity
Furnishing & Erecting Structural Steel	Pounds	6,500
Cleaning and Painting Steel Bridge*	L. Sum	1
Cleaning & Disposal of Lead Paint	L. Sum	1
Cleaning Residues		

\*Refer to Guide Bridge Special Provision for Cleaning and Painting Existing Steel Structures.

DSGN	K.J. Hoffmann				
DR	K.J. Hoffmann				
CHK	J.A. Fraenhoffer				
APVD	J.A. Fraenhoffer	NO.	DATE	REVISION	BY

**FRAUENHOFFER**  
Frauenhoffer and Associates, P.C. Consulting Engineers  
3002 Crossing Court Champaign, IL 61822 217-351-6268

**MISCELLANEOUS FRAMING REPAIRS**  
FAS 447 (C.H. 17) OVER SPOON RIVER  
SECTION 08-00121-01-BR  
FULTON COUNTY

SHEET	30
DWG NO.	STL.dgn
DATE	AUG 2010
PROJ NO.	8015