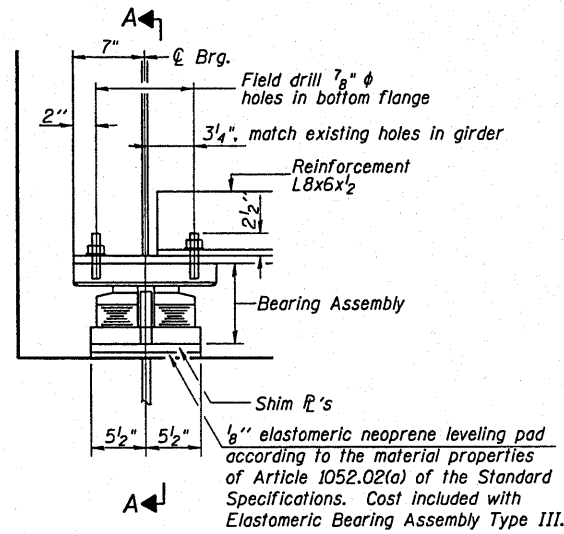
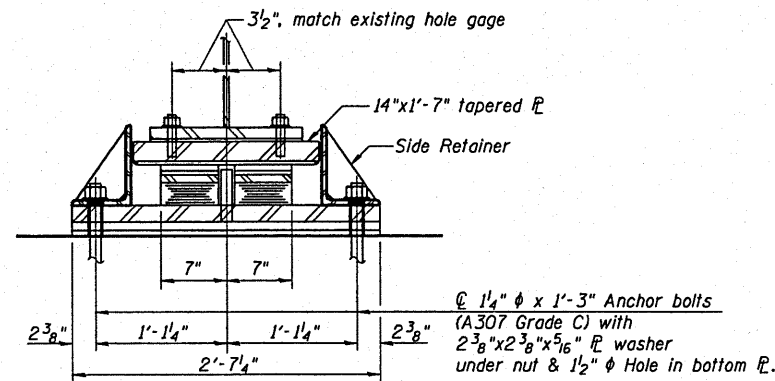


ROUTE NO.	SECTION	COUNTY	SHEET NO.	TOTAL SHEETS
FAS 447	#	Fullton	43	31
FED. ROAD DIST. NO. 7		ILLINOIS	FED. AID PROJECT	

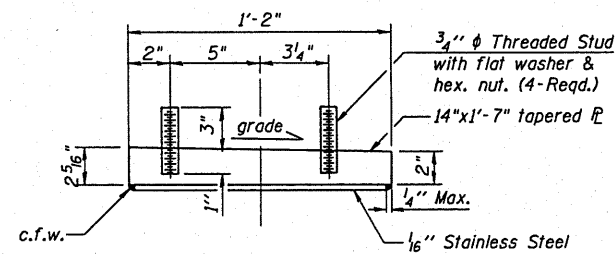


ELEVATION AT ABUT.

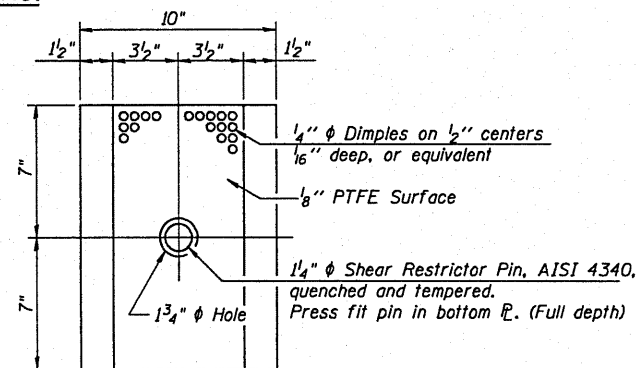


SECTION A-A

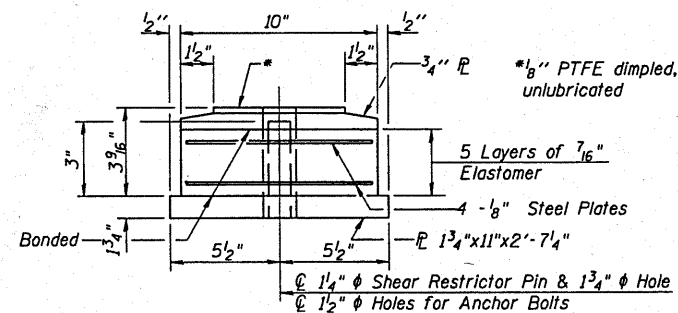
TYPE III ELASTOMERIC EXP. BRG.



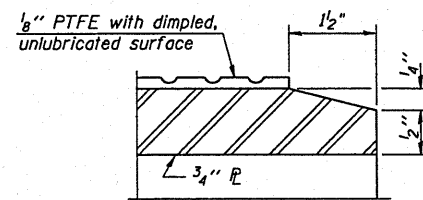
TOP BEARING ASSEMBLY



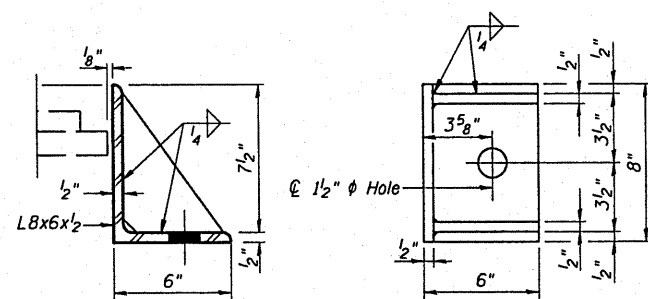
PLAN-PTFE ELASTOMERIC BRG.



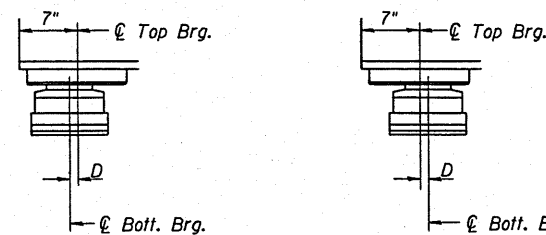
BOTTOM BEARING ASSEMBLY



SECTION THRU PTFE



SIDE RETAINER



SETTING ANCHOR BOLTS AT EXP. BRG.

D = 1/8" per each 100' of expansion for every 15° temp. change from the normal temp. of 50° F.

NOTES:

- The cost of furnishing, erecting, and storing the bearing assemblies shall be included in the cost of Elastomeric Bearing Assembly, Type III.
- ASTM A307 Grade C anchor bolts may be used in lieu of ASTM F1554 Grade 36 (Fy=36ksi).
- Anchor bolts for Type III bearings shall be placed in holes drilled in the concrete through holes in the bottom bearing plate after members are in place. Side retainers shall be placed after bolts are installed.
- Drilled and set anchor bolts shall be installed according to Article 521.06 of the Standard Specifications.
- Side retainers and other steel members required for the bearing assembly shall be included in the cost of Elastomeric Bearing Assembly, Type III.
- The 1/8" PTFE sheet shall be bonded directly to the top steel plate with a two-component, medium viscosity epoxy resin, conforming to the requirements of the Federal Specification MMM-A-134, Type I. The bond agent shall be applied on the full area of the contact surfaces.
- Bonding of 1/8" PTFE sheet during vulcanizing process will be permitted provided the process and method of adjusting assembly height is approved by the Engineer.
- A minimum of three 1/4" shims, three 5/8" shims, and three 1/8" shims shall be furnished for each bottom bearing plate location. One additional 5/8" shim plate shall be provided at the bearings under girder 3.
- All steel components of the bearing system shall be galvanized meeting the requirements of AASHTO M111 or M232, as applicable. High strength bolts shall be galvanized according to AASHTO M298 Class 50. The cost of the galvanization shall be incidental to the cost of Elastomeric Bearing Assembly, Type III.

BILL OF MATERIAL

Item	Unit	Total
Elastomeric Bearing Assembly Type III	Each	10
Anchor Bolts*	Each	20
Jack and Remove Existing Bearings	Each	10

NOTE: Replace all bearings at the east and west abutments.

\* The cost of furnishing and installing anchor bolts is included in the cost of Elastomeric Bearing Assembly, Type III.

DSGN K.J. Hoffmann					
DR K.J. Hoffmann					
CHK J.A. Frauenhoffer					
APVD A. Frauenhoffer	NO.	DATE	REVISION	BY	APVD

FRAUENHOFFER

Frauenhoffer and Associates, P.C. Consulting Engineers  
3002 Crossing Court Champaign, IL 61822 217-351-6268

TYPE III ELASTOMERIC BEARING DETAILS

FAS 447 (C.H. 17) OVER SPOON RIVER  
SECTION 08-00121-01-BR  
FULTON COUNTY

SHEET	31
DWG NO.	8015brg.dgn
DATE	JAN 2010
PROJ NO.	8015