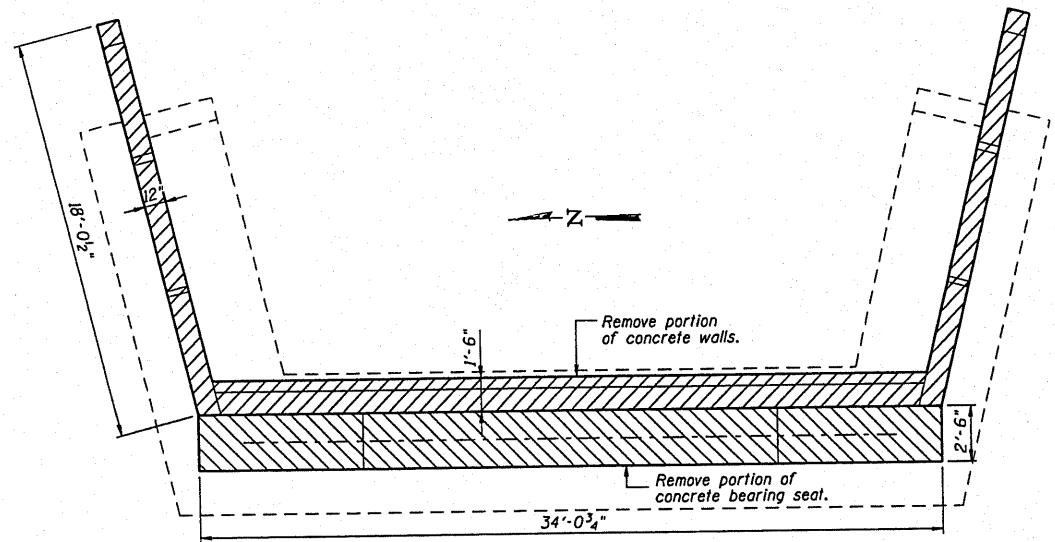
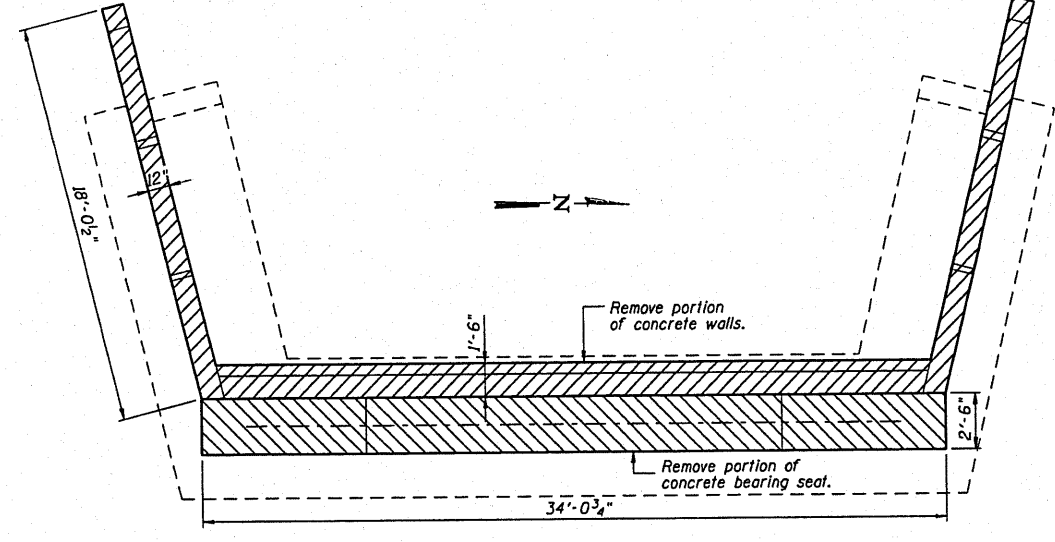


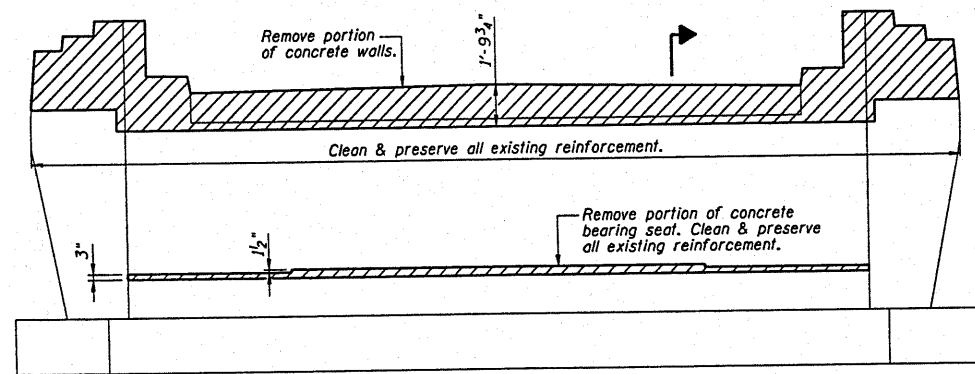
ROUTE NO.	SECTION	COUNTY	SHEET	TOTAL SHEETS
FAS 447	#	Fulton	43	33
FED. ROAD DIST. NO. 7	ILLINOIS	FED. AID PROJECT	#08-00121-01-BR	



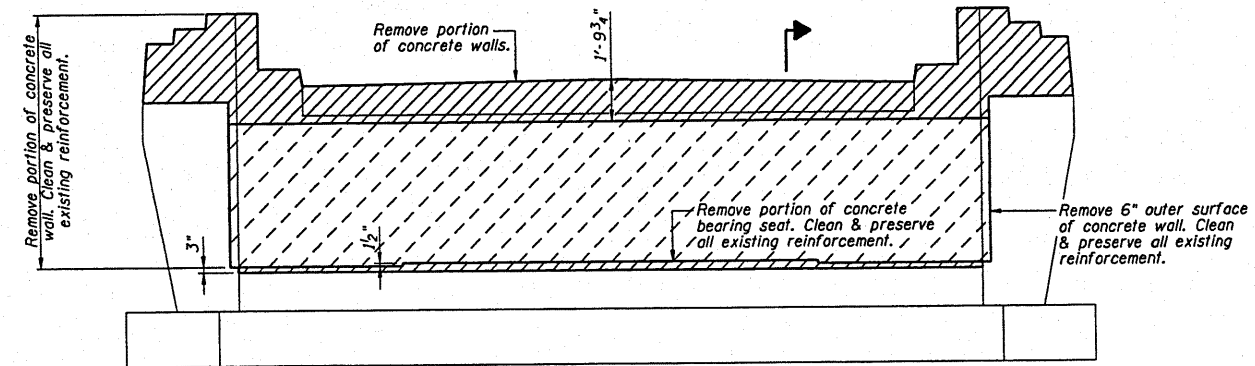
**WEST ABUTMENT PLAN**  
For demolition



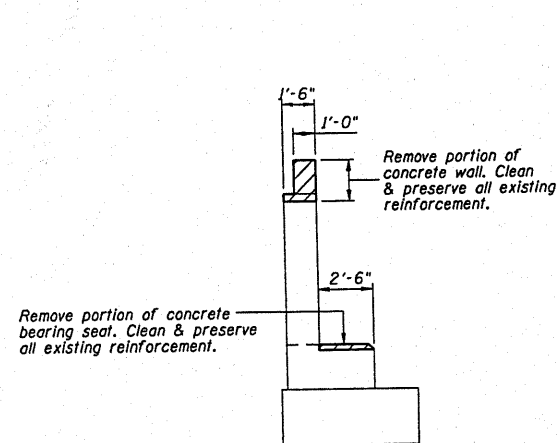
**EAST ABUTMENT PLAN**  
For demolition



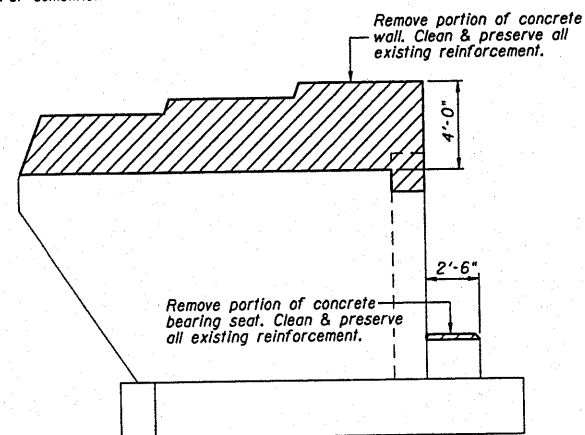
**WEST ABUTMENT FRONT ELEVATION**  
For demolition



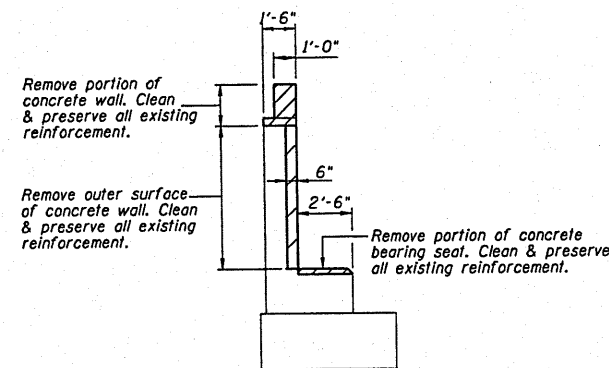
**EAST ABUTMENT FRONT ELEVATION**  
For demolition



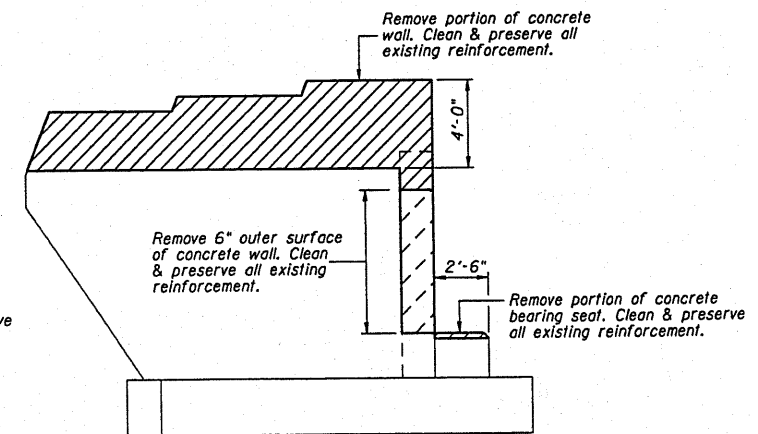
**WEST ABUTMENT SECTION**  
For demolition



**WEST ABUTMENT SIDE ELEVATION**  
For demolition



**EAST ABUTMENT SECTION**  
For demolition



**EAST ABUTMENT SIDE ELEVATION**  
For demolition

**NOTE:**  
Great care shall be taken when removing concrete in order to save and prevent damage to existing reinforcing bars.

**BILL OF MATERIAL 2 ABUTMENTS**

LOCATION	W. Abut.	E. Abut.	Unit	Total
Concrete Removal	5.5	9.8	C.Y.	15.3

DSGN	K.J. Hoffmann				
DR	K.J. Hoffmann				
CHK	J.A. Fraenhoffer				
APVD	J.A. Fraenhoffer	NO.	DATE	REVISION	BY

**FRAUENHOFFER**  
Frauenhoffer and Associates, P.C. Consulting Engineers  
3002 Crossing Court Champaign, IL 61822 217-351-6268

**DEMOLITION AT EXISTING ABUTMENTS**  
FAS 447 (C.H. 17) OVER SPOON RIVER  
SECTION 08-00121-01-BR  
FULTON COUNTY

SHEET	33
DWG NO.	8015ABUT.dgn
DATE	JAN 2010
PROJ NO.	8015