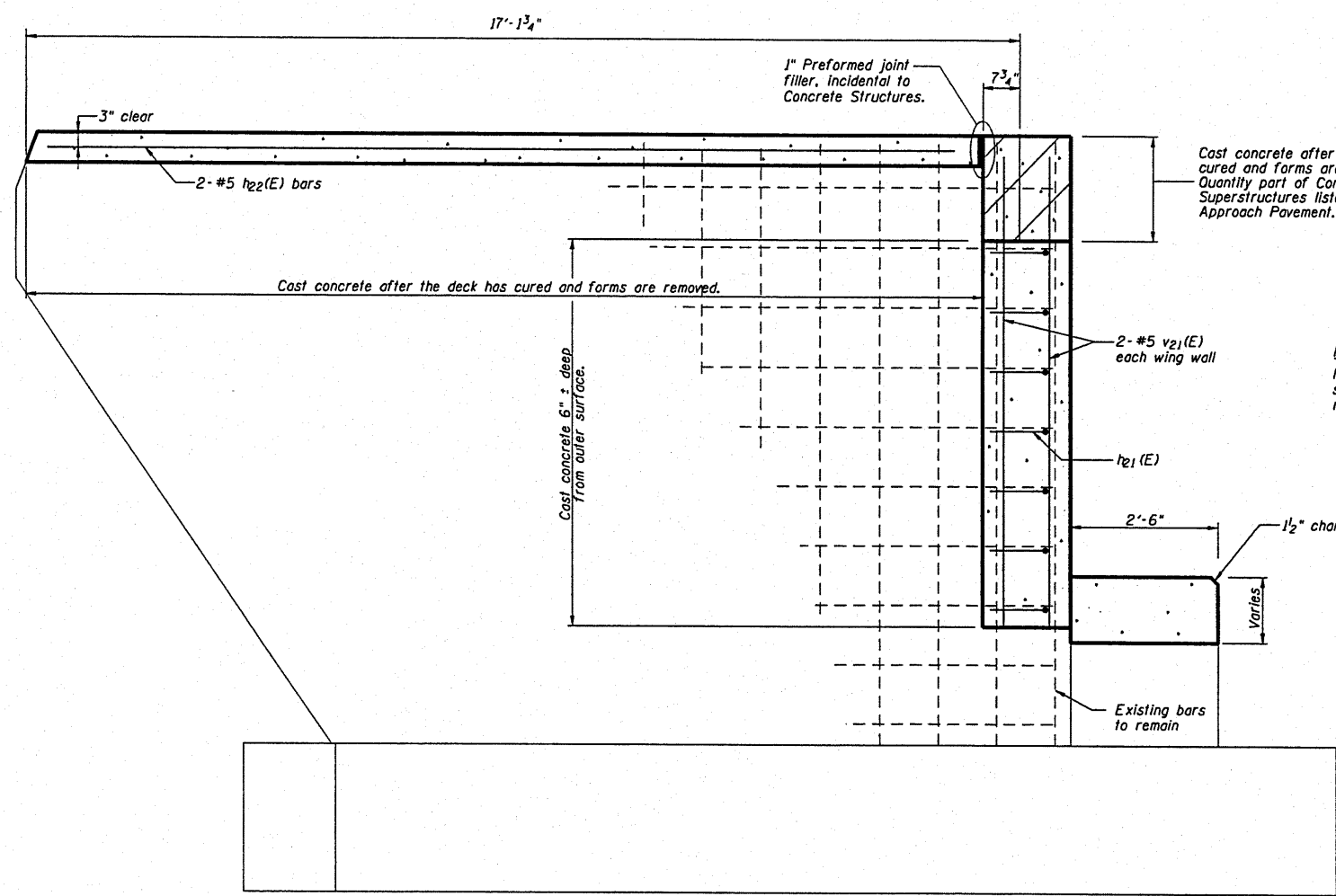
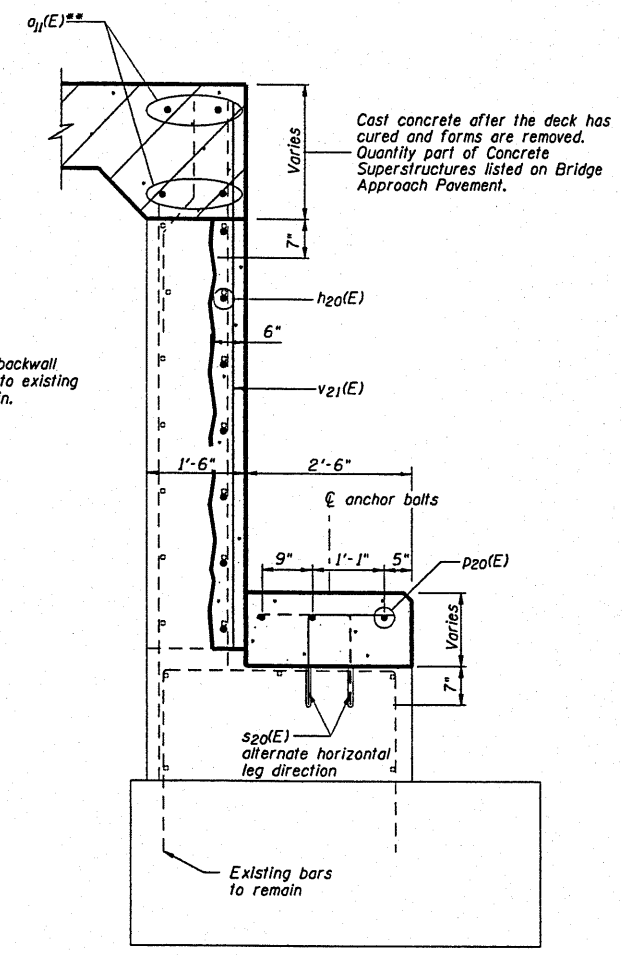


ROUTE NO.	SECTION	COUNTY	TOTAL SHEETS	SHEET NO.
FAS 447	*	Fulton	43	37
FED. ROAD DIST. NO. 7	ILLINOIS	FED. AID PROJECT:		

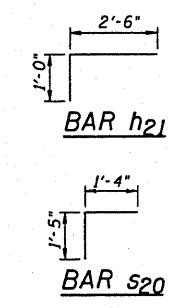


**EAST ABUTMENT  
SIDE ELEVATION**  
For rehabilitation



**EAST ABUTMENT  
SECTION**  
For rehabilitation

**NOTE:**  
New reinforcing bars in backwall shall be placed adjacent to existing reinforcing bars to remain.



BILL OF MATERIAL EAST ABUTMENT				
Bar	No.	Size	Length	Shape
h20(E)	7	# 5	33'-6"	—
h21(E)	14	# 5	3'-6"	┌
h22(E)	4	# 5	16'-0"	—
p20(E)	3	# 6	33'-6"	—
s20(E)	34	# 5	2'-9"	┌
v21(E)	38	# 5	7'-9"	—
Concrete Structures		Cu. Yds.	8.7	
Reinforcement Bars, Epoxy Coated		Lbs.	920	
Concrete Sealer		Sq. Yds.	2	
Structure Excavation		Cu. Yds.	22	

\*\* See Bridge Approach Pavement, sheet 42 for #6 a11 (E) bars.

Reinforcement bars designated (E) shall be epoxy coated.

Bars with an "\*" refer to the epoxy coated replacement bar to be lapped next to the original bar.

Epoxy anchor v20(E) and s20 (E) into existing concrete using a pre-drilled hole and EPCON 6 two-part ceramic epoxy or Hilli 2-part adhesive HIT-RE 500-SD. The cost is included with the cost of Reinforcement Bars, Epoxy Coated.

DSGN	K.J. Hoffmann				
DR	K.J. Hoffmann				
CHK	J.A. Fraenhoffer				
APVD	J.A. Fraenhoffer	NO.	DATE	REVISION	BY

**FRAUENHOFFER**  
Fraenhoffer and Associates, P.C. Consulting Engineers  
3002 Crossing Court Champaign, IL 61822 217-351-6268

**EAST ABUTMENT REHABILITATION-SHEET 2 OF 2**

FAS 447 (C.H. 17) OVER SPOON RIVER  
SECTION 08-00121-01-BR  
FULTON COUNTY

SHEET 37  
DWG NO. 8015ABUT.dgn  
DATE JAN 2010  
PROJ NO. 8015