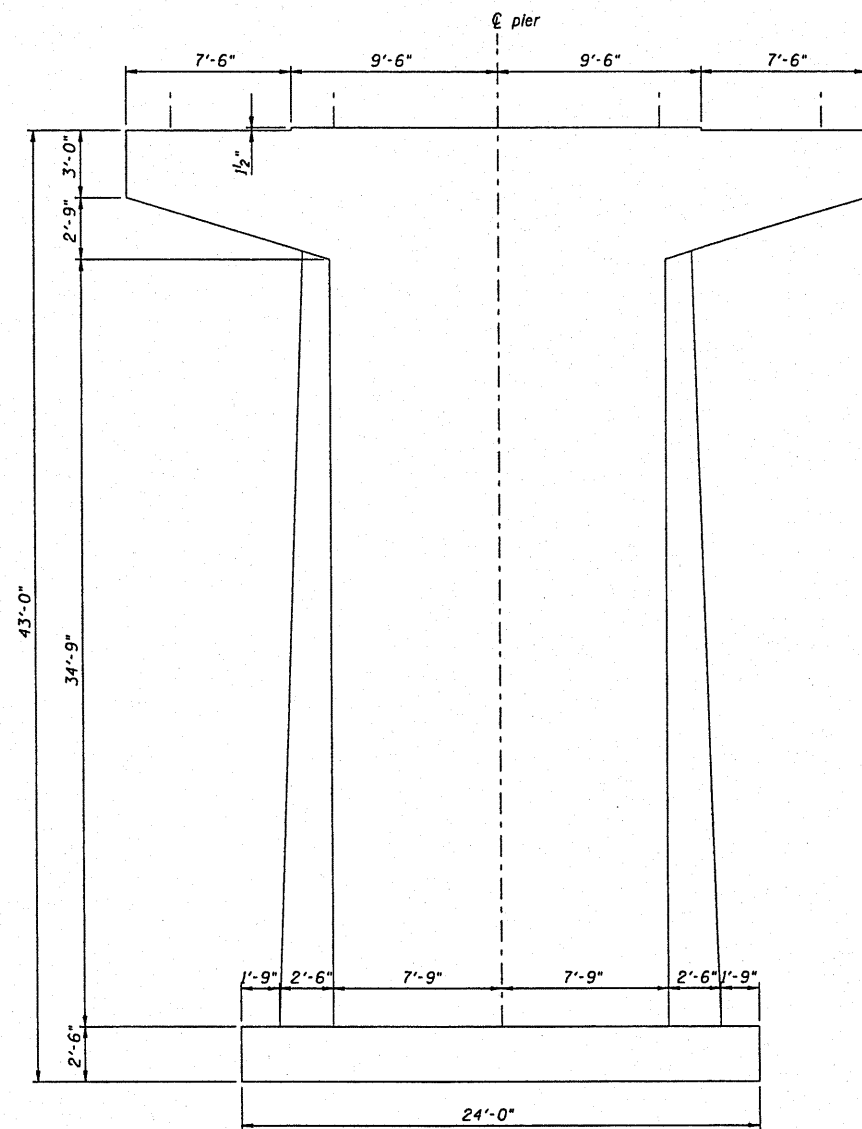
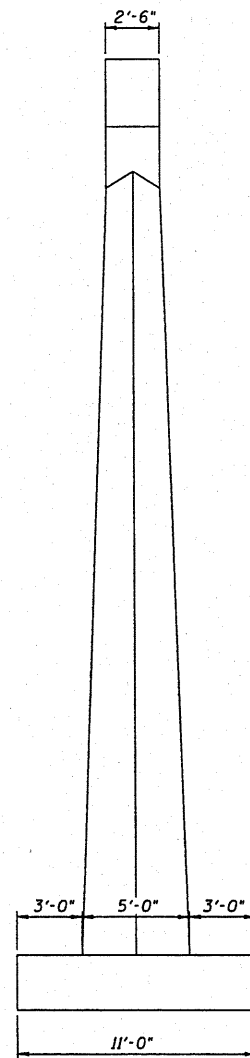


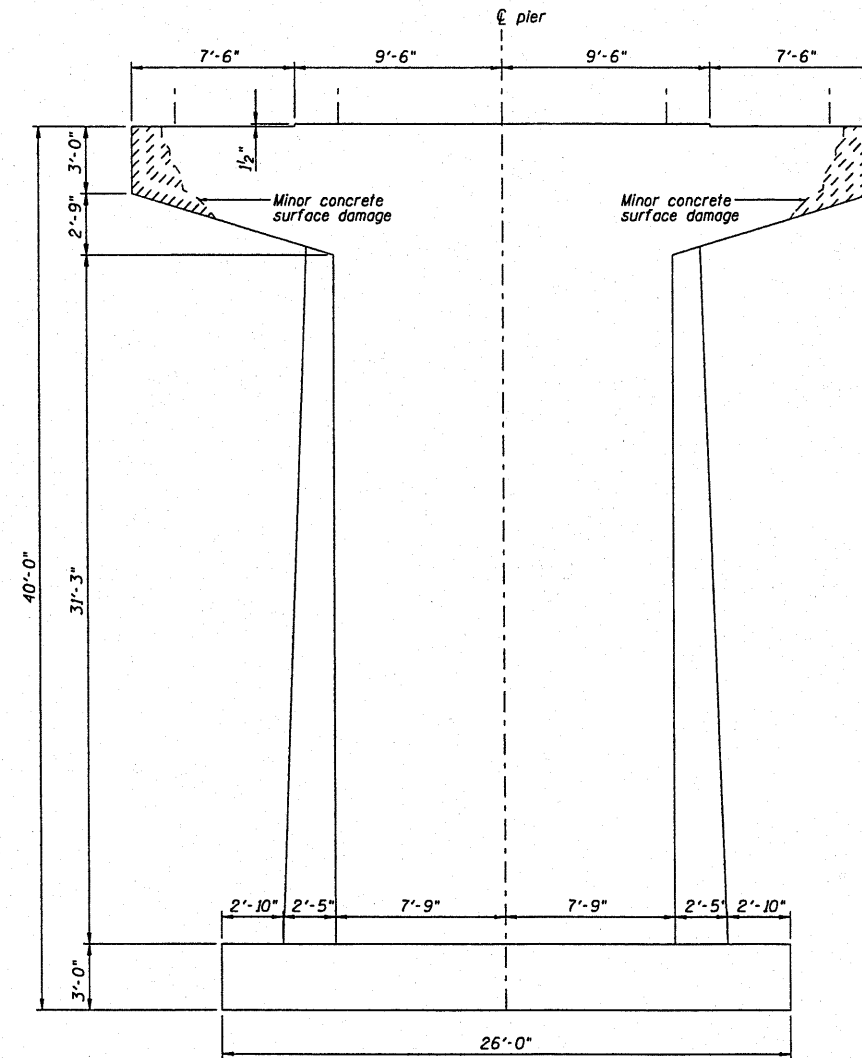
ROUTE NO.	SECTION	COUNT	SHEET NO.
FAS 447	#	Fulton	43
FED. ROAD DIST. NO. 7	ALIGNMENT	FED. AID PROJECT	



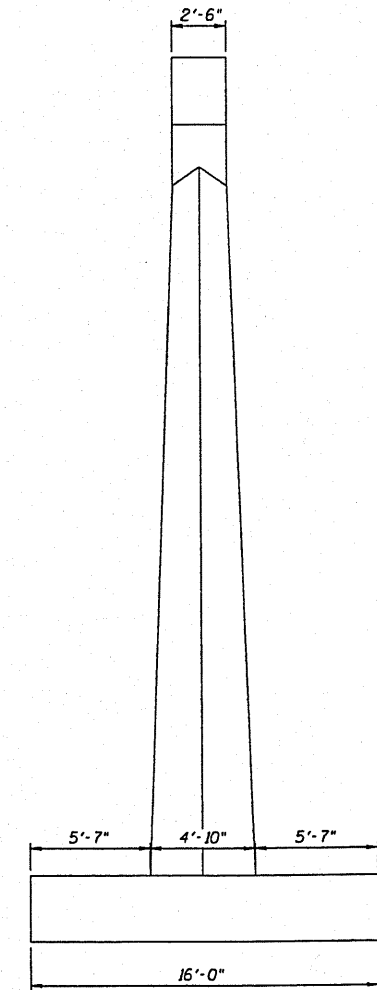
PIER 1 - EAST ELEVATION



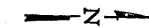
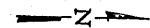
PIER 1 - END ELEVATION



PIER 2 - EAST ELEVATION



PIER 2 - END ELEVATION



NOTE:  
Dimensions shown are taken from the existing plans and are for information only.

DSGN	K.J. Hoffmann				
DR	K.J. Hoffmann				
CHK	J.A. Fraenhoffer				
APVD	J.A. Fraenhoffer	NO.	DATE	REVISION	BY

**FRAUENHÖFFER**

Fraenhoffer and Associates, P.C. Consulting Engineers  
3002 Crossing Court Champaign, IL 61822 217-351-6268

EXISTING PIER CONDITION-SHEET 1 OF 2

FAS 447 (C.H. 17) OVER SPOON RIVER  
SECTION 08-00121-01-BR  
FULTON COUNTY

SHEET	39
DWG NO.	8015PIER.dgn
DATE	JAN 2010
PROJ NO.	8015