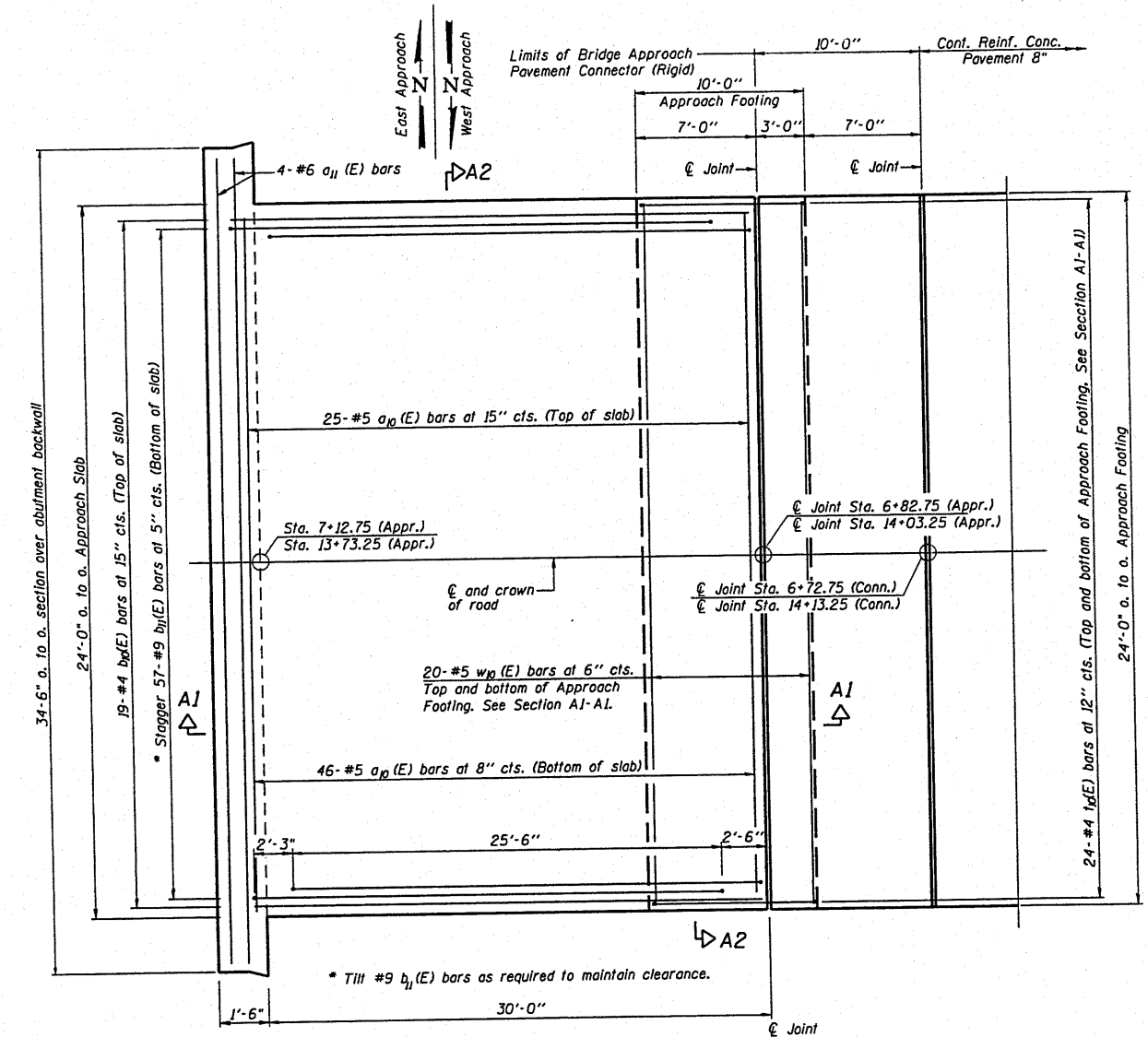
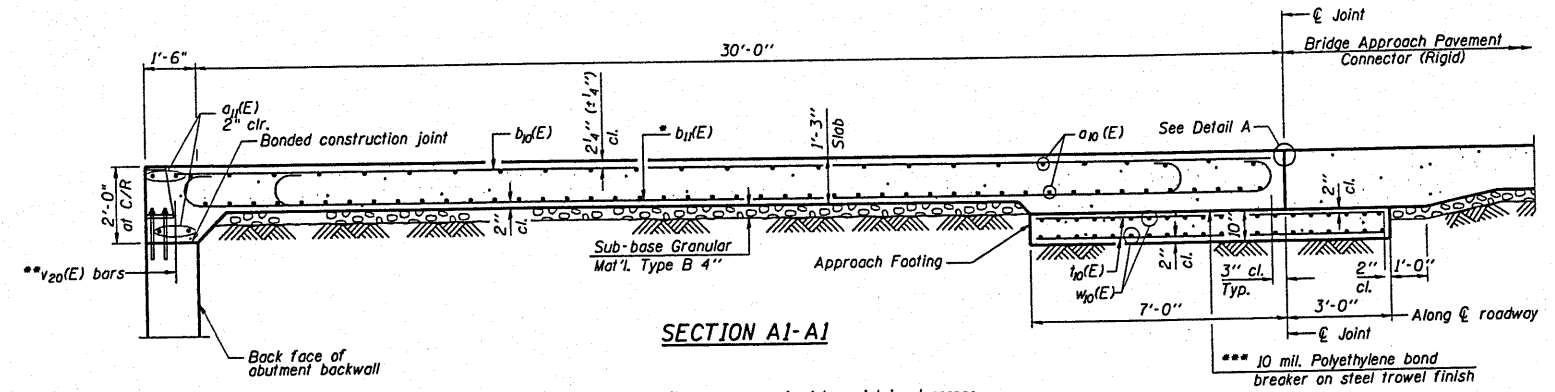


PROJECT NO.	SECTION	COUNTY	SHEET	TOTAL
FAS 447		Fulton	43	42
REV. NO. SHEET NO.	ILLUSTR.	REV. NO. PROJECT		
			*08-00121-01-BR	

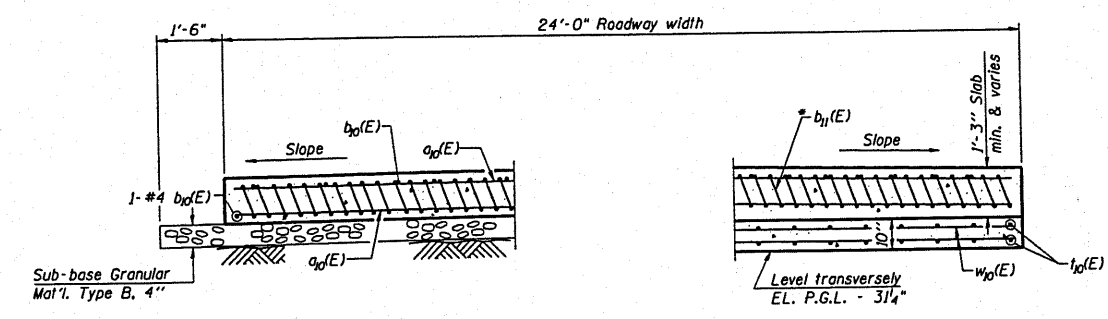


PLAN



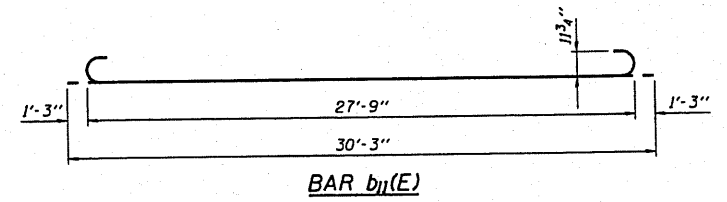
SECTION A1-A1

- \* Till #9 b<sub>1j</sub>(E) bars as required to maintain clearance.
- \*\* v<sub>20</sub>(E) are part of the Abutment Rehabilitation, Sheets 34 & 36.
- \*\*\* Cost included with Concrete Superstructure.

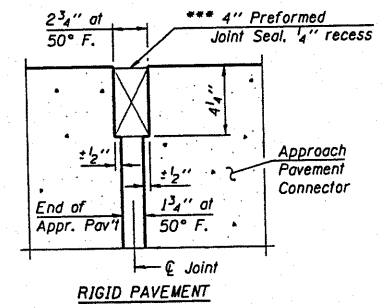


SECTION A2-A2

(See Plan for dimensions not shown)

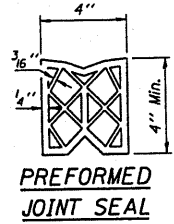


BAR b<sub>1j</sub>(E)



DETAIL A

\*\*\* Cost included with Concrete Superstructure.



PREFORMED JOINT SEAL

NOTES:

- Approach pavement concrete shall be measured and paid for as Concrete Superstructures.
- Approach footing concrete shall be measured and paid for as Concrete Structures.
- Reinforcement bars designated (E) shall be epoxy coated.
- The approach footing maximum applied service bearing pressure (O<sub>max</sub>) = 2.0 ksf.

BILL OF MATERIAL  
2 APPROACH PAVEMENTS

Bar	No.	Size	Length	Shape
a <sub>1p</sub> (E)	142	# 5	23'-4"	—
a <sub>1j</sub> (E)	8	# 6	34'-0"	—
b <sub>1p</sub> (E)	40	# 4	30'-1"	—
b <sub>1j</sub> (E)	114	# 9	30'-3"	—
i <sub>1p</sub> (E)	96	# 4	9'-8"	—
w <sub>1p</sub> (E)	80	# 5	23'-4"	—
Reinforcement Bars, Epoxy Coated			Lbs.	18,960
Concrete Superstructure			Cu. Yds.	80.4
Concrete Structures			Cu. Yds.	14.8
Bridge Deck Grooving			Sq. Yd.	172
Protective Coat			Sq. Yd.	172
Sub-base Granular Mat'l, Type B 4"			Sq. Yd.	138

DSGN	K.J. Hoffmann				
DR	K.J. Hoffmann				
CHK	J.R. Wolf				
APVD	J.A. Fraenhoffer	NO.	DATE	REVISION	BY

**FRAUENHOFFER**  
Frauenhoffer and Associates, P.C. Consulting Engineers  
3002 Crossing Court Champaign, IL 61822 217-351-6268

BRIDGE APPROACH PAVEMENT  
FAS 1447 (C.H. 17) OVER SPOON RIVER  
SECTION 08-00121-01-BR  
FULTON COUNTY

SHEET	42
DWG NO.	8015-appr.dgn
DATE	JAN 2010
PROJ NO.	8015