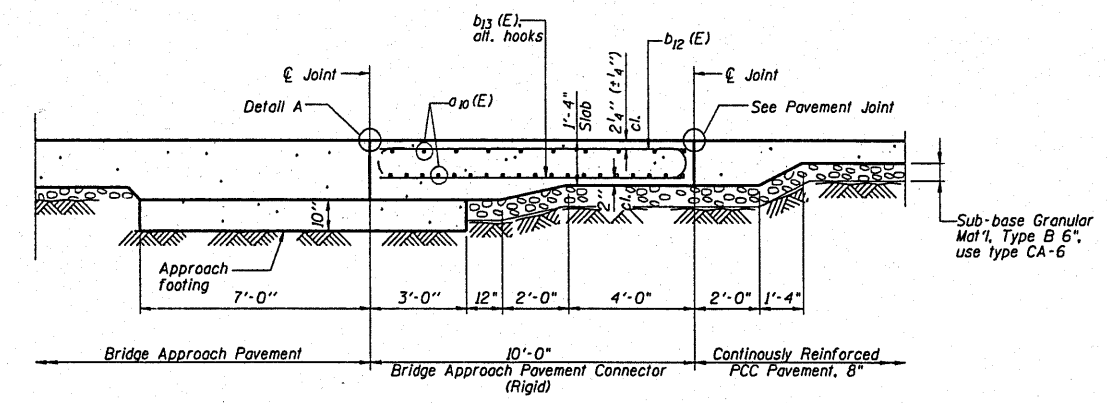
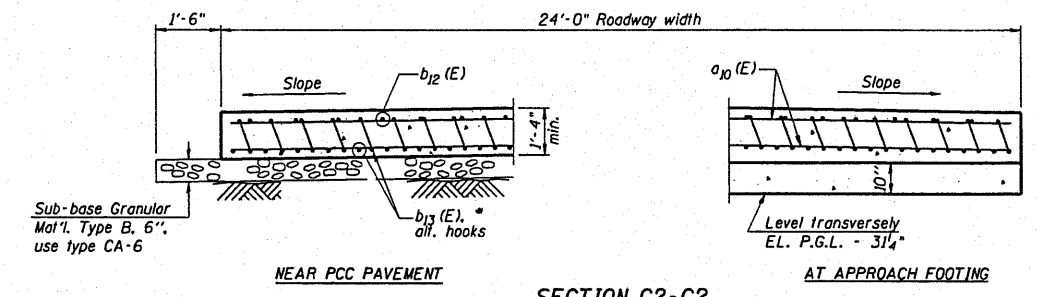


ROUTE NO.	SECTION	COUNT	SHEET	TOTAL
FAS 447		Fulton	43	43
FED. ROAD DIST. NO. 1	ALLIANCE	FED. AID PROJECT		

*08-00121-01-BR

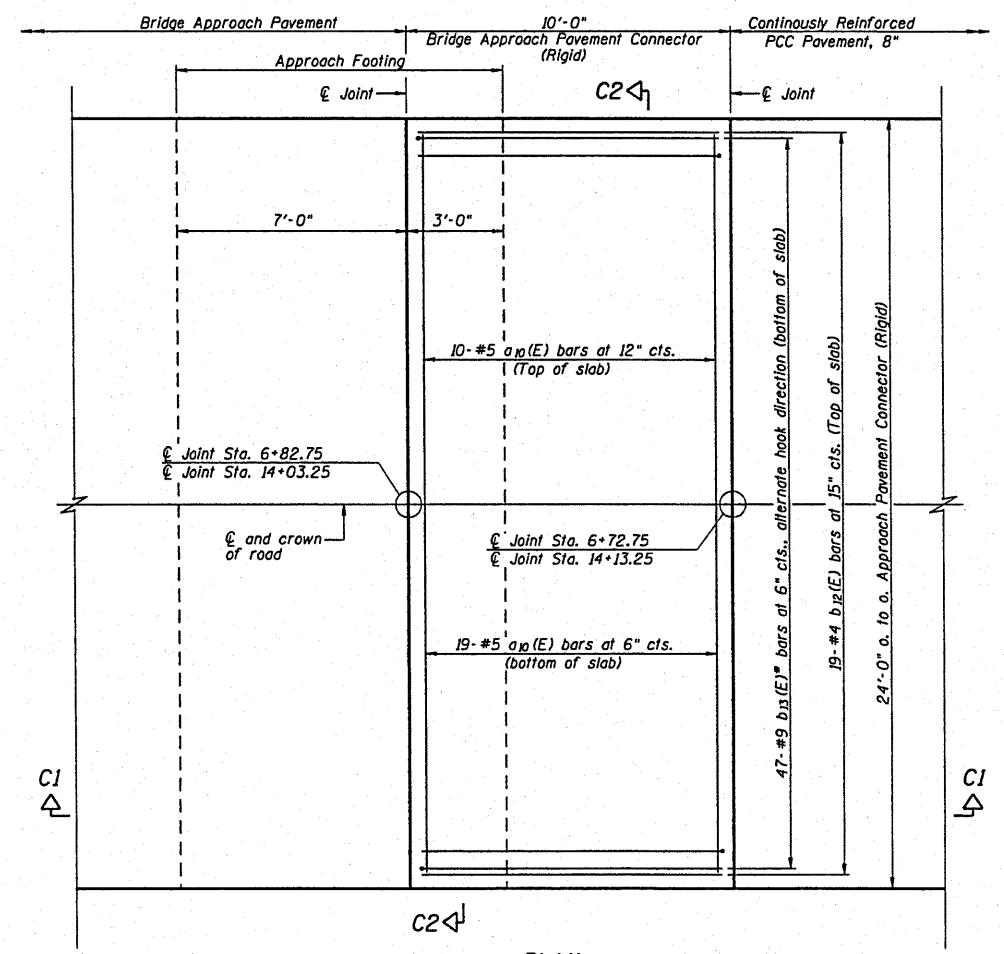


SECTION C1-C1

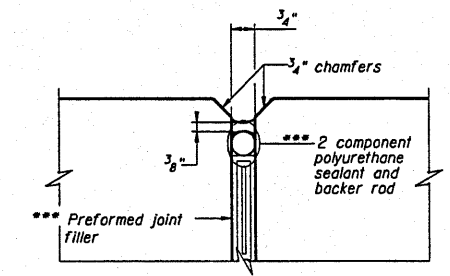


SECTION C2-C2

(See Plan for dimensions not shown)
 * Till #9 b13(E) as required to maintain clearance.

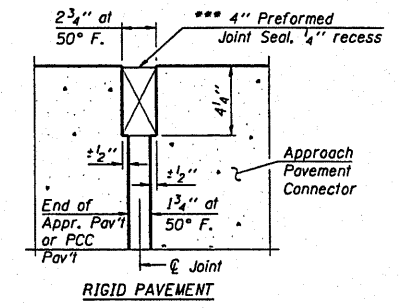


PLAN



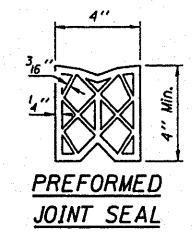
PAVEMENT JOINT DETAIL

*** Cost Included with Concrete Superstructure.

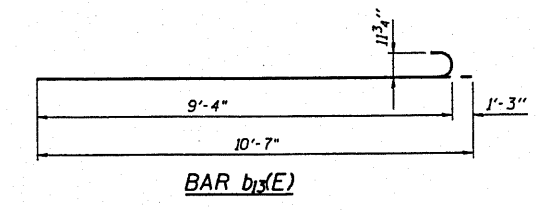


DETAIL A

*** Cost included with Concrete Superstructure.



PREFORMED JOINT SEAL



BILL OF MATERIAL 2 PAV'T CONNECTORS				
Bar	No.	Size	Length	Shape
a10 (E)	58	# 5	23'-4"	—
b12 (E)	38	# 4	9'-4"	—
b13 (E)	94	# 9	10'-7"	—
Reinforcement Bars, Epoxy Coated			Lbs.	5,030
Concrete Superstructure			Cu. Yds.	28.1
Bridge Deck Grooving			Sq. Yd.	54
Protective Coat			Sq. Yd.	54
Sub-base Granular Mat'l, Type B 6"			Sq. Yd.	42

Approach Pavement Connector Concrete shall be paid for as Concrete Superstructures.

DSGN	K.J. Hoffmann				
DR	K.J. Hoffmann				
CHK	J.R. Wolf				
APVD	J.A. Fraunhoffer	NO.	DATE	REVISION	BY

FRAUENHOFFER
 Fraunhoffer and Associates, P.C. Consulting Engineers
 3002 Crossing Court Champaign, IL 61822 217-351-6268

BRIDGE APPROACH PAVEMENT CONNECTOR (RIGID)		SHEET 43
FAS 1447 (C.H. 17) OVER SPOON RIVER SECTION 08-00121-01-BR FULTON COUNTY		DWG. 8015-conn.dgn DATE JAN 2010 PROJ. NO. 8015