

STATE OF ILLINOIS
DEPARTMENT OF TRANSPORTATION

PLANS FOR PROPOSED HIGHWAY BRIDGE PROGRAM

PROJECT BROS-173(170)
T.R. 303 OVER COAL CREEK
SECTION 09-11118-00-BR
SHELBY COUNTY
C-97-123-10

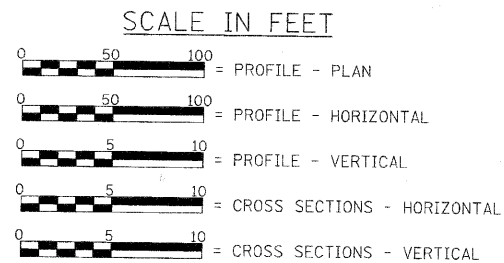
- INDEX OF SHEETS**
- 1 - TITLE SHEET
 - 2 - SUMMARY OF QUANTITIES, DETAILS, & TYPICAL SECTIONS
 - 3 & 4 - PLAN & PROFILE
 - 5 & 6 - GENERAL PLAN & ELEVATION
 - 7 - 10 - SUPERSTRUCTURE
 - 11 - RAILING
 - 12 - ABUTMENTS
 - 13 & 14 - PIERS
 - 15 - STEEL H PILE DETAILS
 - 16 - 22 - CROSS SECTIONS

- STANDARDS**
- STANDARD 000001-05
 - STANDARD 280001-05
 - STANDARD 515001-03
 - STANDARD 701901-01
 - STANDARD BLR 21-8
 - STANDARD 635006-03

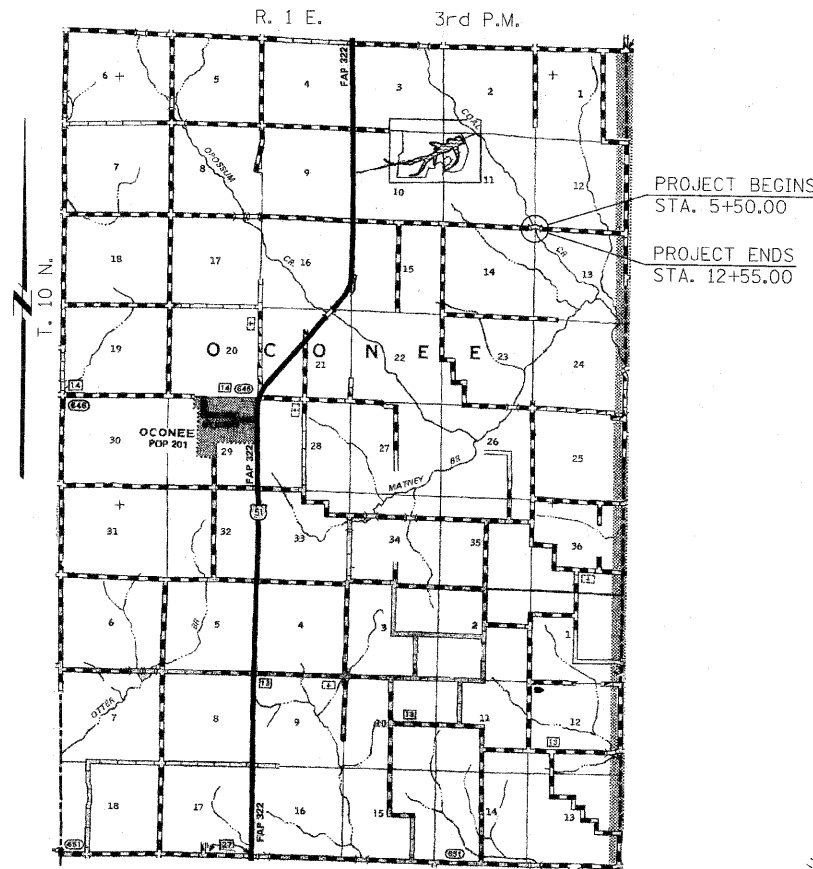
UTILITIES

SHELBY ELECTRIC COOPERATIVE
P.O. BOX 560
SHELBYVILLE, ILLINOIS 62562

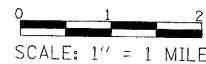
FRONTIER COMMUNICATIONS
117 WEST JEFFERSON
MT. PULASKI, IL 62548



FUNCTIONAL CLASSIFICATION: LOCAL ROAD (NON-URBAN)
A.D.T. - 125 (2009)
A.D.T. - 175 (2029)
30 M.P.H. DESIGN SPEED



LOCATION PLAN
LENGTH OF SECTION - 705.00 FEET = 0.134 MILES



EXISTING STRUCTURE: SINGLE SPAN TIMBER DECK ON STEEL STRINGERS SUPPORTED BY CLOSED TIMBER ABUTMENTS WITH TIMBER WINGWALLS, ±50'-0" BK.-BK. ABUTMENTS, ±20'-0" OUT.-OUT. DECK. STEEL RAILING. ±0° SKEW. EXISTING STRUCTURE NO. 087-3194.

PROPOSED STRUCTURE: THREE SPAN PRECAST CONCRETE DECK BEAM (17") BRIDGE ON OPEN CONCRETE ABUTMENTS AND SOLID CONCRETE PIERS. 24'-0" OUT. TO OUT. DECK, 120'-0" BK. TO BK. ABUTMENTS. STEEL RAILING TYPE S1. 15° SKEW. PROPOSED STRUCTURE NO. 087-3569.



Christopher P. Kohler 7/27/10
EXPIRATION: 11/30/2011

APPROVED <u>7-30</u> , 20 <u>10</u> <i>Malcolm Cannon</i> TOWNSHIP HIGHWAY COMMISSIONER	
APPROVED <u>9-7-20</u> , 20 <u>10</u> <i>L. Whiteford</i> COUNTY ENGINEER	
PASSED <u>8-5</u> , 20 <u>10</u> <i>Maureen Kost</i> DISTRICT SEVEN ENGINEER OF LOCAL ROADS & STREETS	
Releasing For Bid Based on Limited Review <u>8-5</u> , 20 <u>10</u> <i>Robert D. Dishell</i> DEPUTY DIRECTOR OF HIGHWAYS, REGION FOUR ENGINEER	
STATE OF ILLINOIS DEPARTMENT OF TRANSPORTATION	

TOLL FREE
"JOINT UTILITY LOCATION INFORMATION FOR EXCAVATORS"
(J.U.L.I.E.) TELEPHONE NUMBER
1-800-892-0123

CONTRACT NO. 95629

FILE NAME - #FILE#4	USER NAME - #USER#	DESIGNED -	REVISED -	<p>Allen Henderson & Associates, Inc. Civil and Structural Engineers Springfield, IL. 62703 Phone: (217)544-8033 IL Design Firm No. 184-001907</p>	TITLE SHEET	T.R. RTE. 303	SECTION 09-11118-00-BR	COUNTY SHELBY	TOTAL SHEETS 22	SHEET NO. 1	
PLT SCALE - #SCALE#	PLT DATE - #DATE#	DRAWN -	REVISED -		SCALE: 1" = 1 MILE SHEET NO. 1 OF 1 SHEETS	STA. 5+50.00 TO STA. 12+55.00	CONTRACT NO. 95629		FED. ROAD DIST. NO. ILLINOIS FED. AID PROJECT		
		CHECKED -	REVISED -								