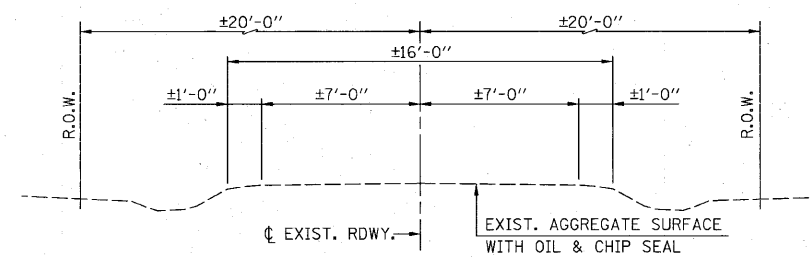
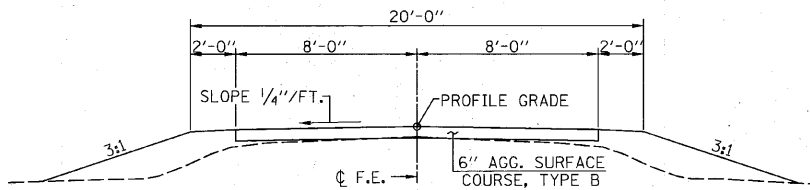


**PROPOSED CROSS SECTION**

- 3:1 < 6'
- 2:1 > 6'
- 3:1 < 10'
- 2:1 > 10'



**EXISTING CROSS SECTION**

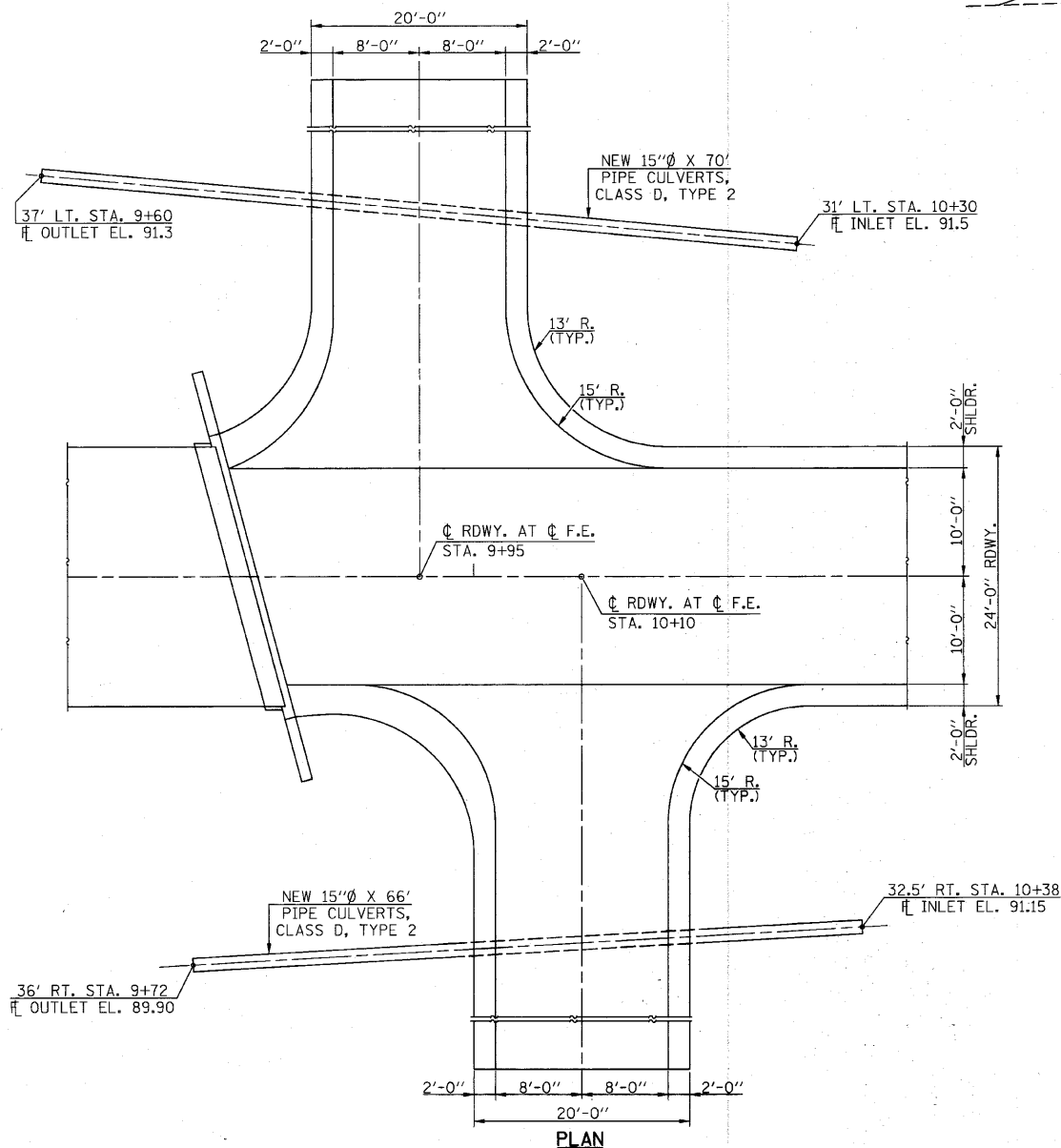


**TYPICAL FIELD ENTRANCE**

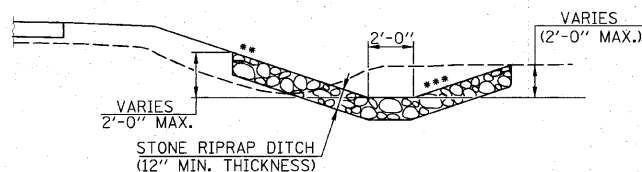
(F.E. STA. 9+95 LT.)  
(F.E. STA. 10+10 RT.)

**GENERAL NOTES**

SEEDING: FERTILIZER NUTRIENTS SHALL BE APPLIED AT A RATIO OF 1:1:1 AND AT A RATE OF 90 POUNDS PER ACRE FOR EACH NUTRIENT.  
MULCH SHALL BE APPLIED AT THE RATE OF 2 TONS PER ACRE.  
AREAS TO BE SEEDD SHALL CONSIST OF ALL DISTURBED EARTH SURFACES WITHIN THE RIGHT OF WAY AND EASEMENT AS DIRECTED BY THE ENGINEER.  
BEFORE ORDERING PIPE CULVERTS CONTRACTOR SHALL CONSULT WITH ENGINEER TO VERIFY LENGTHS.



**PLAN**



**STONE DUMPED RIPRAP, CLASS A-4**

**SUMMARY OF QUANTITIES**

ITEM	UNIT	QUANTITY
20100500	TREE REMOVAL, ACRES	ACRE 0.80
20200100	EARTH EXCAVATION	CU. YD. 3890
20300100	CHANNEL EXCAVATION	CU. YD. 1240
25000200	SEEDING, CLASS 2	ACRE 1.2
25000400	NITROGEN FERTILIZER NUTRIENT	POUND 108
25000500	PHOSPHORUS FERTILIZER NUTRIENT	POUND 108
25000600	POTASSIUM FERTILIZER NUTRIENT	POUND 108
25100115	MULCH, METHOD 2	ACRE 1.2
28000250	TEMPORARY EROSION CONTROL SEEDING	POUND 100
28000305	TEMPORARY DITCH CHECKS	FOOT 36
28000400	PERIMETER EROSION BARRIER	FOOT 1481
28100200	STONE RIPRAP CLASS A4	TON 754
28100807	STONE DUMPED RIPRAP, CLASS A4	TON 219
28200200	FILTER FABRIC	SQ. YD. 1012
40200800	AGGREGATE SURFACE COURSE, TYPE B	TON 671
50100100	REMOVAL OF EXISTING STRUCTURES	EACH 1
50200100	STRUCTURE EXCAVATION	CU. YD. 58
50300225	CONCRETE STRUCTURES	CU. YD. 105.7
50300280	CONCRETE ENCASEMENT	CU. YD. 2.8
50400305	PRECAST PRESTRESSED CONCRETE DECK BEAMS (17" DEPTH)	SQ. FT. 2843
50800105	REINFORCEMENT BARS	POUND 10510
50900205	STEEL RAILING, TYPE S-1	FOOT 240
51201400	FURNISHING STEEL PILES HP 10X42	FOOT 939
51202305	DRIVING PILES	FOOT 939
51203400	TEST PILE STEEL HP 10X42	EACH 4
51500100	NAME PLATES	EACH 1
542D1060	PIPE CULVERTS, CLASS D, TYPE 2 15"	FOOT 136
67100100	MOBILIZATION	L. SUM 1
78201000	TERMINAL MARKER - DIRECT APPLIED	EACH 4
X5020501	UNDERWATER STRUCTURE EXCAVATION PROTECTION - LOCATION 1	EACH 1
X5020502	UNDERWATER STRUCTURE EXCAVATION PROTECTION - LOCATION 2	EACH 1

- SEE SPECIAL PROVISIONS
- Δ SPECIALTY ITEMS

**EARTHWORK SCHEDULE**

LOCATION	EARTH EXCAVATION	EARTH EXCAVATION ADJUSTED FOR SHRINKAGE	EMBANKMENT	EARTHWORK BALANCE
	CU. YD.	CU. YD.		WASTE (+) OR SHORTAGE (-)
STA. 5+50 TO STA. 6+00	273	205	0	205
STA. 6+00 TO STA. 6+50	557	418	0	418
STA. 6+50 TO STA. 7+00	707	530	0	530
STA. 7+00 TO STA. 7+50	1070	803	0	803
STA. 7+50 TO STA. 8+00	879	659	2	657
STA. 8+00 TO STA. 8+50	242	182	139	43
STA. 8+50 TO STA. 8+60	4	3	55	-52
BRIDGE OMISSION - STA. 8+60 TO STA. 9+80	-	-	-	-
STA. 9+80 TO STA. 10+00	21	16	353	-337
STA. 10+00 TO STA. 10+50	64	48	760	-712
STA. 10+50 TO STA. 11+00	49	37	281	-244
STA. 11+00 TO STA. 11+50	12	9	146	-137
STA. 11+50 TO STA. 12+00	5	4	47	-43
STA. 12+00 TO STA. 12+50	7	5	9	-4
STA. 12+50 TO STA. 12+55	0	0	0	0
<b>TOTAL</b>	<b>3890</b>	<b>2919</b>	<b>1792</b>	<b>1127</b>

•••• NO FURNISHED EXCAVATION WILL BE REQUIRED. THE COST OF DISPOSING EXCESS EARTH, CHANNEL OR STRUCTURE EXCAVATION SHALL BE INCLUDED IN THE CONTRACT UNIT PRICE FOR EARTH EXCAVATION.  
ENTRANCE EMBANKMENT INCLUDED IN STA. 9+80 TO STA. 10+50 EMBANKMENT CALCULATIONS.