

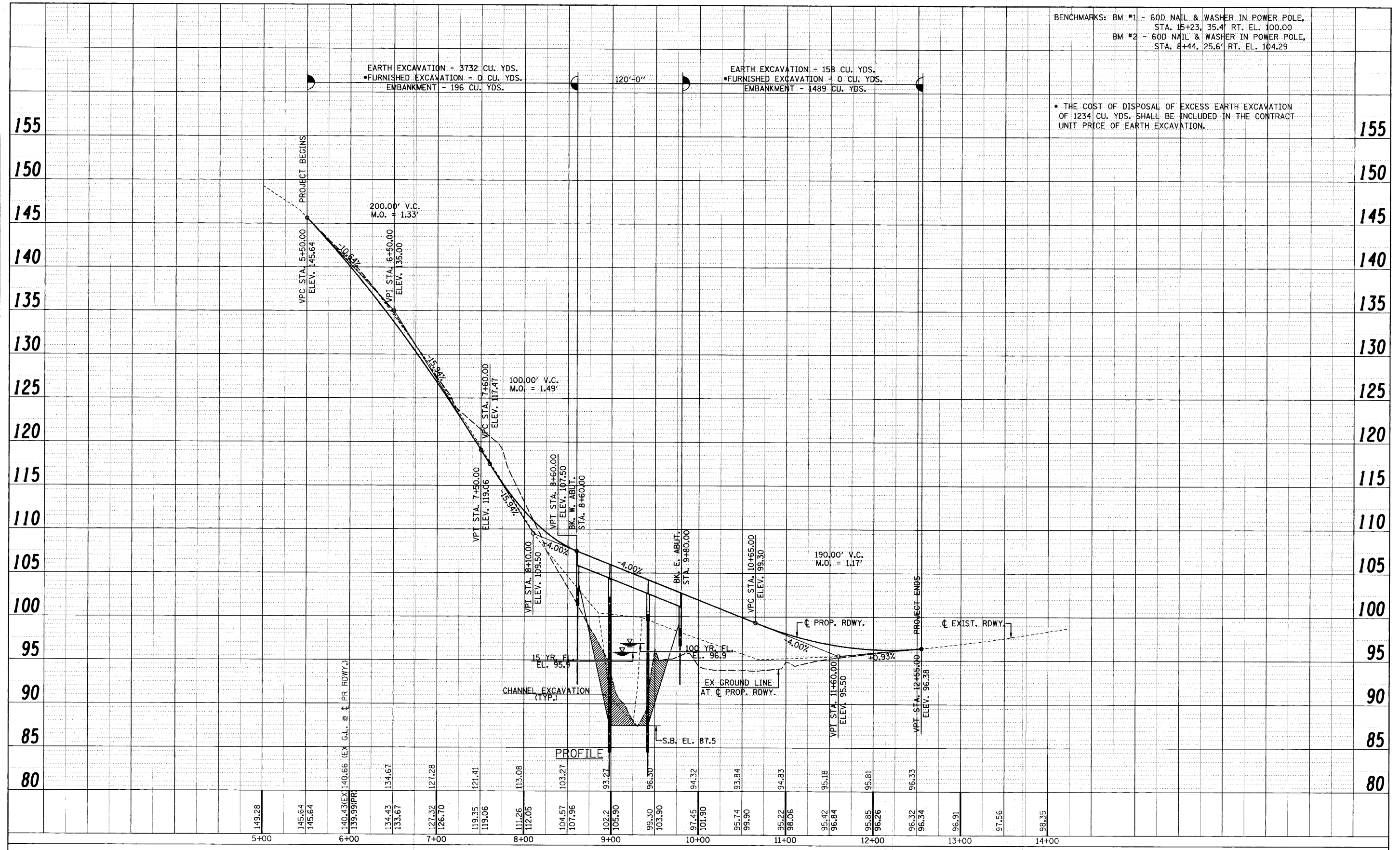
BENCHMARKS: BM #1 - 60D NAIL & WASHER IN POWER POLE,  
STA. 15+23, 35.4' RT. EL. 100.00  
BM #2 - 60D NAIL & WASHER IN POWER POLE,  
STA. 8+44, 25.6' RT. EL. 104.29

\* THE COST OF DISPOSAL OF EXCESS EARTH EXCAVATION  
OF 1234 CU. YDS. SHALL BE INCLUDED IN THE CONTRACT  
UNIT PRICE OF EARTH EXCAVATION.

EARTH EXCAVATION - 3732 CU. YDS.  
\*FURNISHED EXCAVATION - 0 CU. YDS.  
EMBANKMENT - 196 CU. YDS.

120'-0"

EARTH EXCAVATION - 158 CU. YDS.  
\*FURNISHED EXCAVATION - 0 CU. YDS.  
EMBANKMENT - 1489 CU. YDS.



DATE: \_\_\_\_\_ BY: \_\_\_\_\_

PLANNING: \_\_\_\_\_

DESIGNED: \_\_\_\_\_

CHECKED: \_\_\_\_\_

REVISIONS:

NO.	DESCRIPTION

DATE: \_\_\_\_\_ BY: \_\_\_\_\_


PROFILE: \_\_\_\_\_

DESIGNED: \_\_\_\_\_

CHECKED: \_\_\_\_\_

REVISIONS:

NO.	DESCRIPTION

FILE NAME: _____	USER NAME: #USER#	DESIGNED: _____	REVISION: _____	 <b>Allen Henderson &amp; Associates, Inc.</b> Civil and Structural Engineers Springfield, IL 62703 Phone: (217)544-8033 IL Design Firm No. 184-001907	<b>ROADWAY PROFILE</b>		T.R. RT.:	SECTION	COUNTY	TOTAL SHEETS	SHEET NO.
#FILE#	PILOT SCALE: #SCALE#	CHECKED: _____	REVISION: _____		303	09-11118-00-BR	SHELBY	22	4		
PILOT DATE: #DATE#	CHECKED: _____	REVISION: _____	REVISION: _____		SCALE: 1" = 50'		SHEET NO. 2 OF 2 SHEETS		STA. 5+50.00 TO STA. 12+55.00	CONTRACT NO. 95629	
						FED. ROAD DIST. NO.		ILLINOIS FED. AID PROJECT			