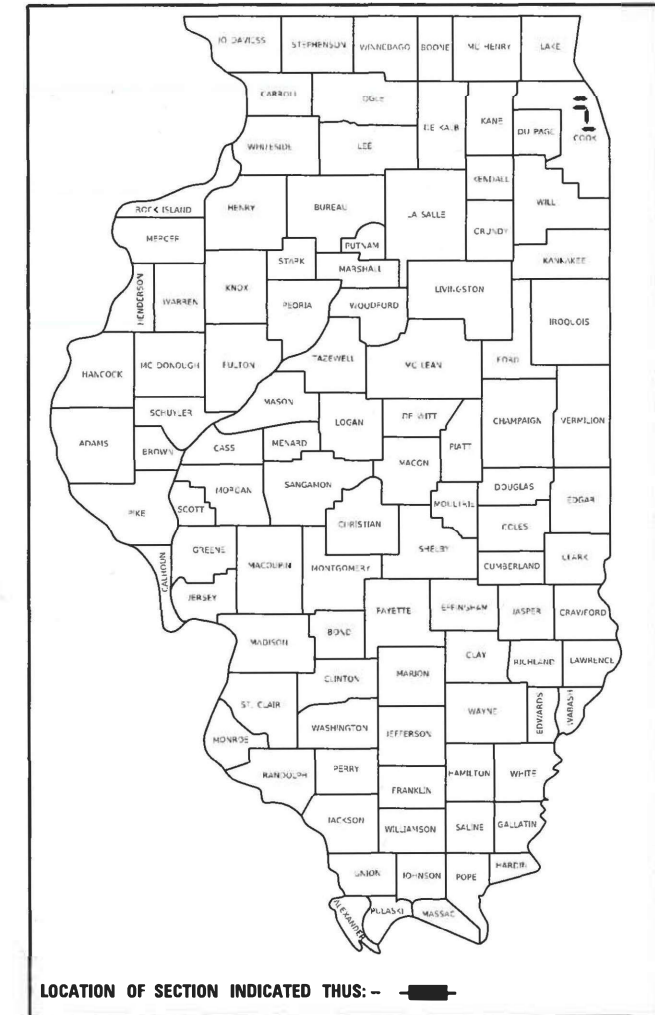


STATE OF ILLINOIS  
DEPARTMENT OF TRANSPORTATION

F.A.I. RTE.	SECTION	COUNTY	TOTAL SHEETS	SHEET NO.
90/94	2021-114-B-R	COOK	21	1
		ILLINOIS	CONTRACT NO. 62P49	

\* 21 + 1 = 22 TOTAL SHEETS

D-91-202-21



# PROPOSED HIGHWAY PLANS

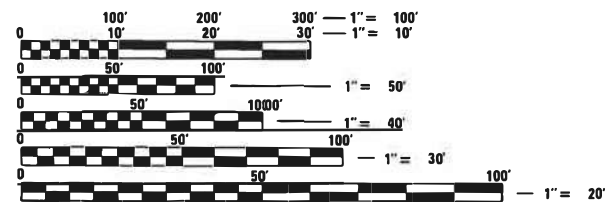
F.A.I. 90/94 (I-90/94): DAN RYAN EXPRESSWAY  
SECTION 2021-114-B-R  
BRIDGE DECK SEALING, BRIDGE JOINT REPAIR  
COOK COUNTY

C-91-241-21

SEE LOCATION MAPS  
SHEET 5

FOR INDEX OF SHEETS, SEE SHEET NO. 2

IMPROVEMENTS ARE LOCATED IN THE CITY OF CHICAGO.



FULL SIZE PLANS HAVE BEEN PREPARED USING STANDARD ENGINEERING SCALES. REDUCED SIZED PLANS WILL NOT CONFORM TO STANDARD SCALES. IN MAKING MEASUREMENTS ON REDUCED PLANS, THE ABOVE SCALES MAY BE USED.

C.U.A.N.  
CHICAGO UTILITY ALERT NETWORK  
1-312-744-7000

PROJECT ENGINEER: RODRIGO LEDEZMA (847) 705-4580  
PROJECT MANAGER: J. ALAIN MIDY (847) 221-3056

CONTRACT NO. 62P49

STATE OF ILLINOIS  
DEPARTMENT OF TRANSPORTATION

SUBMITTED August 5 20 21  
Greg Ruiz ICAS  
REGIONAL ENGINEER

October 1 20 21  
[Signature]  
ENGINEER OF DESIGN AND ENVIRONMENT

October 21 21  
Stephen M. [Signature]  
DIRECTOR OF HIGHWAYS PROJECT IMPLEMENTATION

PRINTED BY THE AUTHORITY  
OF THE STATE OF ILLINOIS

**INDEX OF SHEETS**

SHEET NO.	DESCRIPTION
1	TITLE SHEET
2	INDEX OF SHEETS, STATE STANDARDS, AND GENERAL NOTES
3	SUMMARY OF QUANTITIES
4	SCHEDULE OF QUANTITIES
5	LOCATION MAPS
6-8	BRIDGE REPAIR PLANS (LOCATION NO 1, SN 016-0398)
9-11	BRIDGE REPAIR PLANS (LOCATION NO 2 & 3, SN 016-1152 & 016-1153)
12-14	BRIDGE REPAIR PLANS (LOCATION NO 4, SN 016-1007)
15-17	BRIDGE REPAIR PLANS (LOCATION NO 5, SN 016-0189)
18	ENTRANCE AND EXIT RAMP CLOSURE DETAILS (TC-08)
18a	SINGLE LANE WEAVE AND MULTI-LANE WEAVE (TC-09)
19	TRAFFIC CONTROL AND PROTECTION FOR SIDE ROADS, INTERSECTIONS, AND DRIVEWAYS (TC-10)
20	TRAFFIC CONTROL AND PROTECTION AT TURN BAYS (TO REMAIN OPEN TO TRAFFIC) (TC-14)
21	PARTIAL RAMP AND SHOULDER CLOSURE DETAILS (TC-17)

**STATE STANDARDS**

SHEET NO.	DESCRIPTION
701400-10	APPROACH TO LANE CLOSURE, FREEWAY/EXPRESSWAY
701401-12	LANE CLOSURE, FREEWAY/EXPRESSWAY
701411-09	LANE CLOSURE, MULTILANE, AT ENTRANCE OR EXIT RAMP, FOR SPEEDS > 45 MPH
701428-01	TRAFFIC CONTROL SETUP AND REMOVAL FREEWAY/EXPRESSWAY
701446-11	TWO LANE CLOSURE, FREEWAY/EXPRESSWAY
701502-09	URBAN LANE CLOSURE, 2L, 2W, WITH BIDIRECTIONAL LEFT TURN LANE
701601-09	URBAN LANE CLOSURE, MULTILANE, 1W OR 2W WITH NONTRAVERSABLE MEDIAN
701606-10	URBAN LANE CLOSURE, MULTILANE, 2W WITH MOUNTABLE MEDIAN
701701-10	URBAN LANE CLOSURE, MULTILANE INTERSECTION
701801-06	SIDEWALK, CORNER OR CROSSWALK CLOSURE
701901-08	TRAFFIC CONTROL DEVICES

**GENERAL NOTES**

BEFORE STARTING ANY EXCAVATION, THE CONTRACTOR SHALL CALL "C.U.A.N." (CHICAGO UTILITY ALERT NETWORK) AT (312)744-7000 FOR FIELD LOCATIONS OF BURIED ELECTRIC, TELEPHONE AND GAS UTILITIES. (48 HOUR NOTIFICATION IS REQUIRED).

THE CONTRACTOR SHALL COORDINATE CONSTRUCTION ACTIVITIES WITH UTILITY COMPANIES, AND THE CITY OF CHICAGO.

THE CONTRACTOR WILL NOT BE ALLOWED TO SET UP A YARD OR FIELD OFFICE ON STATE PROPERTY WITHOUT WRITTEN PERMISSION FROM THE DEPARTMENT.

IT SHALL BE THE CONTRACTOR'S RESPONSIBILITY TO VERIFY ALL DIMENSIONS AND CONDITIONS EXISTING IN THE FIELD PRIOR TO CONSTRUCTION AND ORDERING OF MATERIALS.

THE CONTRACTOR SHALL CONTACT THE DISTRICT ONE TRAFFIC CONTROL SUPERVISOR AT KALPANA.KANNAN-HOSADURGA@ILLINOIS.GOV AND THE DISTRICT ONE EXPRESSWAY TRAFFIC CONTROL SUPERVISOR AT (847) 705-4151 A MINIMUM OF 72 HOURS IN ADVANCE OF BEGINNING WORK.

THESE PLANS HAVE BEEN PREPARED FROM NOTES RECEIVED FROM THE BUREAU OF MAINTENANCE.

THE CONTRACTOR SHALL BE REQUIRED TO PROVIDE ACCESS TO ABUTTING PROPERTY AT ALL TIMES DURING THE CONSTRUCTION OF THIS PROJECT.

DO NOT SCALE PLANS FOR CONSTRUCTION DIMENSIONS.

THE CONTRACTOR SHALL TAKE NECESSARY PRECAUTIONS TO INSURE THAT NO DEBRIS WILL ENDANGER OR INTERFERE WITH TRAFFIC ON THE ROADWAY BENEATH THE BRIDGE ACCORDING TO ARTICLE 107.09 OF THE STANDARD SPECIFICATIONS. THIS WORK WILL NOT BE PAID FOR SEPARATELY, BUT SHALL BE INCLUDED IN THE CONTRACT UNIT PRICE FOR THE APPROPRIATE PAY ITEM INVOLVED AND NO ADDITIONAL COMPENSATION WILL BE ALLOWED.

WHEN WORKERS ARE PRESENT IN THE LOCATION WITH NO MEANS OF ESCAPE (BRIDGE DECKS), A TRUCK MOUNTED ATTENUATOR SHALL BE DEPLOYED TO PROTECT THE WORK AREA ON EACH LANE CLOSED TO TRAFFIC. THE COST OF THE TRUCK MOUNTED ATTENUATOR SHALL BE INCLUDED IN THE COST OF THE TRAFFIC CONTROL & PROTECTION PAY ITEM FOR EACH LOCATION (SEE SCHEDULE OF QUANTITIES).

BRIDGE DECK CONCRETE SEALER SHALL BE APPLIED TO THE BRIDGE DECK, THE CURBS, THE SIDEWALKS, AND THE INTERIOR FACES AND TOPS OF THE PARAPETS AT EACH LOCATION.

THE CONTRACTOR SHALL REQUEST AND GAIN APPROVAL FROM THE ILLINOIS DEPARTMENT OF TRANSPORTATION'S EXPRESSWAY TRAFFIC OPERATIONS ENGINEER AT WWW.IDOTLCS.COM TWENTY-FOUR (24) HOURS IN ADVANCE OF ALL DAILY LANE, RAMP, AND SHOULDER CLOSURES AND 7 DAYS IN ADVANCE OF ALL PERMANENT AND WEEKEND CLOSURES ON ALL FREEWAYS AND/OR EXPRESSWAYS IN DISTRICT ONE. THIS ADVANCE NOTIFICATION IS CALCULATED BASED ON WORKWEEK OF MONDAY THROUGH FRIDAY AND SHALL NOT INCLUDE WEEKENDS OR HOLIDAYS.

MODEL: Default  
 FILE NAME: \\ulster-pw-beadley.com\FW\DOT\Documents\DOT Office\District\_1\Projects\10221\ICDD\Draws\Drawings\10221-1-1-2021-1-1-2021.dwg

USER NAME = rothjp	DESIGNED -	REVISED -
	DRAWN -	REVISED -
PLOT SCALE = 100,0000' / in.	CHECKED -	REVISED -
PLOT DATE = 9/21/2021	DATE -	REVISED -

**STATE OF ILLINOIS  
DEPARTMENT OF TRANSPORTATION**

**INDEX OF SHEETS, STATE STANDARDS, AND GENERAL NOTES  
I-90/94 AT VARIOUS LOCATIONS**

SCALE: SHEET 1 OF 1 SHEETS STA. TO STA.

F.A.I. RTE.	SECTION	COUNTY	TOTAL SHEETS	SHEET NO.
90/94	2021-114-B-R	COOK	21	2
CONTRACT NO. 62P49			ILLINOIS FED. AID PROJECT	

SUMMARY OF QUANTITIES			URBAN TOTAL QUANTITIES	100% STATE 0047	CONSTRUCTION TYPE CODE					
CODE NO	ITEM	UNIT								
67000400	ENGINEER'S FIELD OFFICE, TYPE A	CAL MO	6	6						
67100100	MOBILIZATION	L SUM	1	1						
70102625	TRAFFIC CONTROL AND PROTECTION, STANDARD 701606	L SUM	1	1						
70102630	TRAFFIC CONTROL AND PROTECTION, STANDARD 701601	L SUM	1	1						
70102635	TRAFFIC CONTROL AND PROTECTION, STANDARD 701701	L SUM	1	1						
70102640	TRAFFIC CONTROL AND PROTECTION, STANDARD 701801	L SUM	1	1						
70200100	NIGHTTIME WORK ZONE LIGHTING	L SUM	1	1						
X7011015	TRAFFIC CONTROL AND PROTECTION (EXPRESSWAYS)	L SUM	1	1						
X0900052	PREFORMED JOINT SEAL, 1-1/2"	FOOT	660	660						
X5870015	BRIDGE DECK CONCRETE SEALER	SO FT	124367	124367						
Z0041895	POLYMER CONCRETE	CU FT	64	64						

SUMMARY OF QUANTITIES			TOTAL QUANTITIES	CONSTRUCTION TYPE CODE				
CODE NO	ITEM	UNIT						

FILE NAME =	USER NAME = rdhjp	DESIGNED -	REVISED -
pw\101dot-pw\benley.com\PW\DOT\Documents\DOT_Offices\District\Projects\94 EB @ Dalton Rd\CAD\dra\Design\DRAWING\cover.dgn		CHECKED -	REVISED -
		DATE -	REVISED -

**STATE OF ILLINOIS  
DEPARTMENT OF TRANSPORTATION**

<b>SUMMARY OF QUANTITIES</b>			
<b>I-9094 AT VARIOUS LOCATION</b>			
SCALE:	SHEET NO. 1 OF 1 SHEETS	STA.	TO STA.

F.A.P. RTÉ.	SECTION	COUNTY	TOTAL SHEETS	SHEET NO.
90/94	2021-114-B-R	COOK	21	3
FED. ROAD DIST. NO. 1 ILLINOIS FED. AID PROJECT			<b>CONTRACT NO. 62P49</b>	

MODEL: Default  
 FILE NAME: \\s:\project\aw\bea\by.com\PIV\DOT\Documents\DOT Office\District\_1\Project\ID120221\CAD\DATA\Design\ID120221-qty-schedule.dgn

LOCATION	SN 016-0398	SN 016-1152	SN 016-1153	SN 016-1007	SN 016-0189
BRIDGE DECK CONCRETE SEALER (SQ. FT.)	31139	20738	19679	27261	25500
PREFORMED JOINT SEAL 1½" (FOOT)	193	142	135	-	190
POLYMER CONCRETE (CU. FT.)	22	16	15	-	11
TRAFFIC CONTROL AND PROTECTION, STANDARD 701601	-	0.5	0.5	-	-
TRAFFIC CONTROL AND PROTECTION, STANDARD 701606	0.33	-	-	0.33	0.34
TRAFFIC CONTROL AND PROTECTION, STANDARD 701701	0.2	0.2	0.2	0.2	0.2
TRAFFIC CONTROL AND PROTECTION, STANDARD 701801	-	0.33	0.33	0.34	-
NIGHTTIME WORK ZONE LIGHTING	0.2	0.2	0.2	0.2	0.2

USER NAME = rothjp	DESIGNED -	REVISED -
	DRAWN -	REVISED -
PLOT SCALE = 100,0000 ' / in.	CHECKED -	REVISED -
PLOT DATE = 9/14/2021	DATE -	REVISED -

**STATE OF ILLINOIS  
 DEPARTMENT OF TRANSPORTATION**

**SCHEDULE OF QUANTITIES  
 I-90/94 AT VARIOUS LOCATIONS**

SCALE: SHEET 1 OF 1 SHEETS STA. TO STA.

F.A.I. RTE.	SECTION	COUNTY	TOTAL SHEETS	SHEET NO.
90/94	2021-114-B-R	COOK	21	4
CONTRACT NO. 62P49			ILLINOIS FED. AID PROJECT	

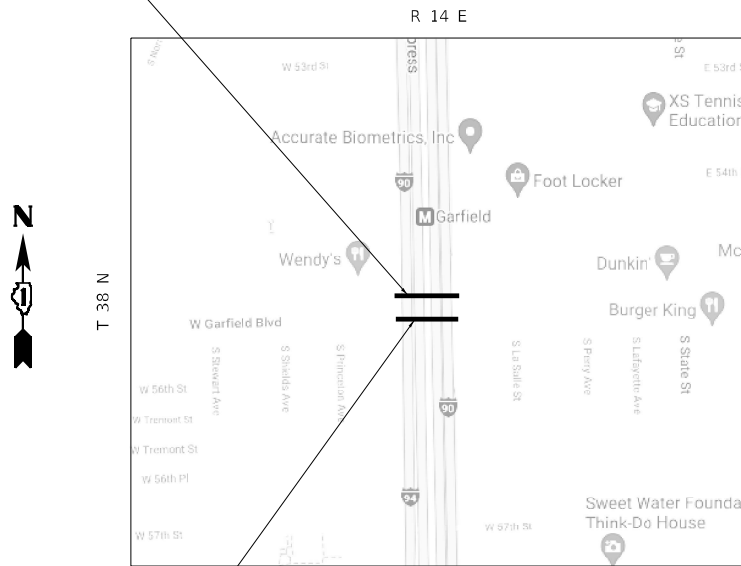


LOCATION 1: SN 016-0398  
39TH ST. (PERSHING RD.) OVER I-90/94  
CITY OF CHICAGO



CHICAGO CITY TOWNSHIP  
MAP 1

LOCATION 2: SN 016-1152  
55TH ST. OVER I-90/94  
CITY OF CHICAGO



CHICAGO CITY TOWNSHIP  
MAP 2

LOCATION 3: SN 016-1153  
55TH ST. OVER I-90/94  
CITY OF CHICAGO



CHICAGO CITY TOWNSHIP  
MAP 3

LOCATION 5: SN 016-0189  
69TH ST. OVER I-90/94  
CITY OF CHICAGO



CHICAGO CITY TOWNSHIP  
MAP 4

TRAFFIC DATA				
STRUCTURE NUMBER	FACILITY CARRIED	MAP #	ADT	SPEED LIMIT
016-0398	39TH ST. (PERSHING RD.) OVER I-90/94	1	10200 (2018)	35 MPH
016-1152	55TH ST. (GARFIELD BLVD.) OVER I-90/94	2	27400 (2018)	30 MPH
016-1153	55TH ST. (GARFIELD BLVD.) OVER I-90/94	2	27400 (2018)	30 MPH
016-1007	WENTWORTH AVE. OVER I-90/94	3	1000 (2014)	40 MPH
016-0189	69TH ST. OVER I-90/94	4	10000 (2018)	40 MPH

STATE OF ILLINOIS  
DEPARTMENT OF TRANSPORTATION

LOCATION MAPS 1-4  
I-90/94 AT VARIOUS LOCATIONS

USER NAME = rothjp	DESIGNED -	REVISED -
PLOT SCALE = 100,0000' / in.	DRAWN -	REVISED -
PLOT DATE = 8/20/2021	CHECKED -	REVISED -
	DATE -	REVISED -

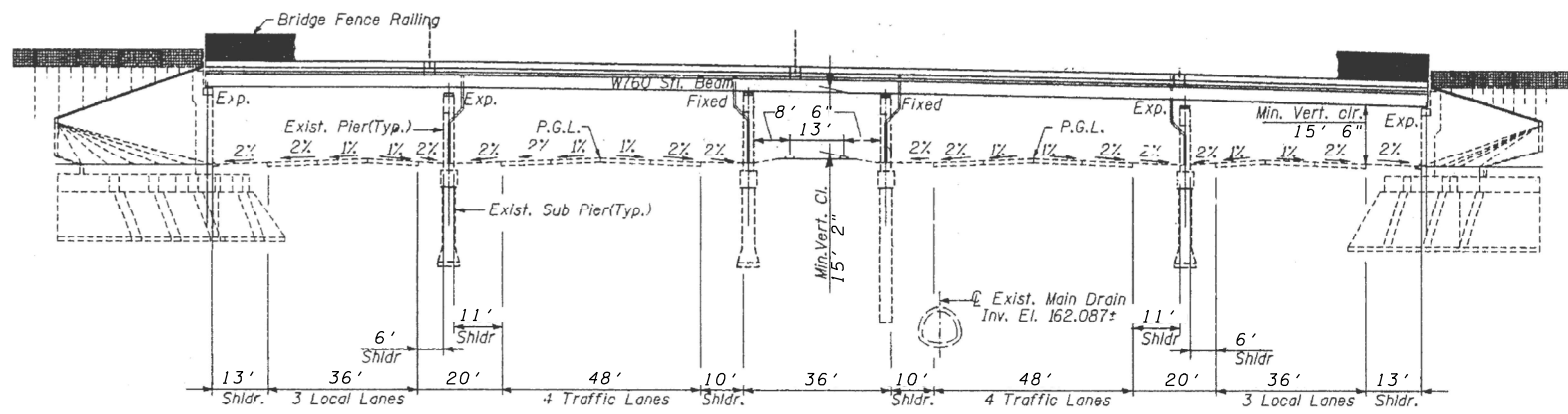
SCALE:	SHEET 1 OF 1 SHEETS	STA.	TO STA.
--------	---------------------	------	---------

F.A.I. RTE.	SECTION	COUNTY	TOTAL SHEETS	SHEET NO.
90/94	2021-114-B-R	COOK	21	5
CONTRACT NO. 62P49				
ILLINOIS FED. AID PROJECT				

MODEL: Default  
FILE NAME: p:\build\aw-beadefy.com\P\DOT\Documents\DOT Office\District 1\Projects\194 EB @ Dodson Rd\CADD\data\Design\DOT\xxxxx-sht-cover.dgn

Bench Mark : B.M. #B : "X" Cut Southern Bolt Fire Hydrant Southwest corner of Pershing Road and Wentworth Avenue Elev. 181.834

Existing Structure: S.N. 016-0398 is a five span continuous steel beam structure with 184mm reinforced concrete deck slab and 50mm of bituminous surfacing. The overall length of structure from back to back of abutments is 90.675m and out of out deck width is 29.972m. The bridge is located on the tangent horizontal alignment with no skew. The superstructure is supported by cantilever full height abutments on spread footings with reinforced concrete pedestals. The reinforced concrete multi-column piers are supported on drilled shafts. The bridge was built in 1961-62 under Federal Aid project No. I-94-3(29)-54, Section 5-2323.2-4R. The existing superstructure will be removed and replaced.



ELEVATION



Expires 11-30-2022

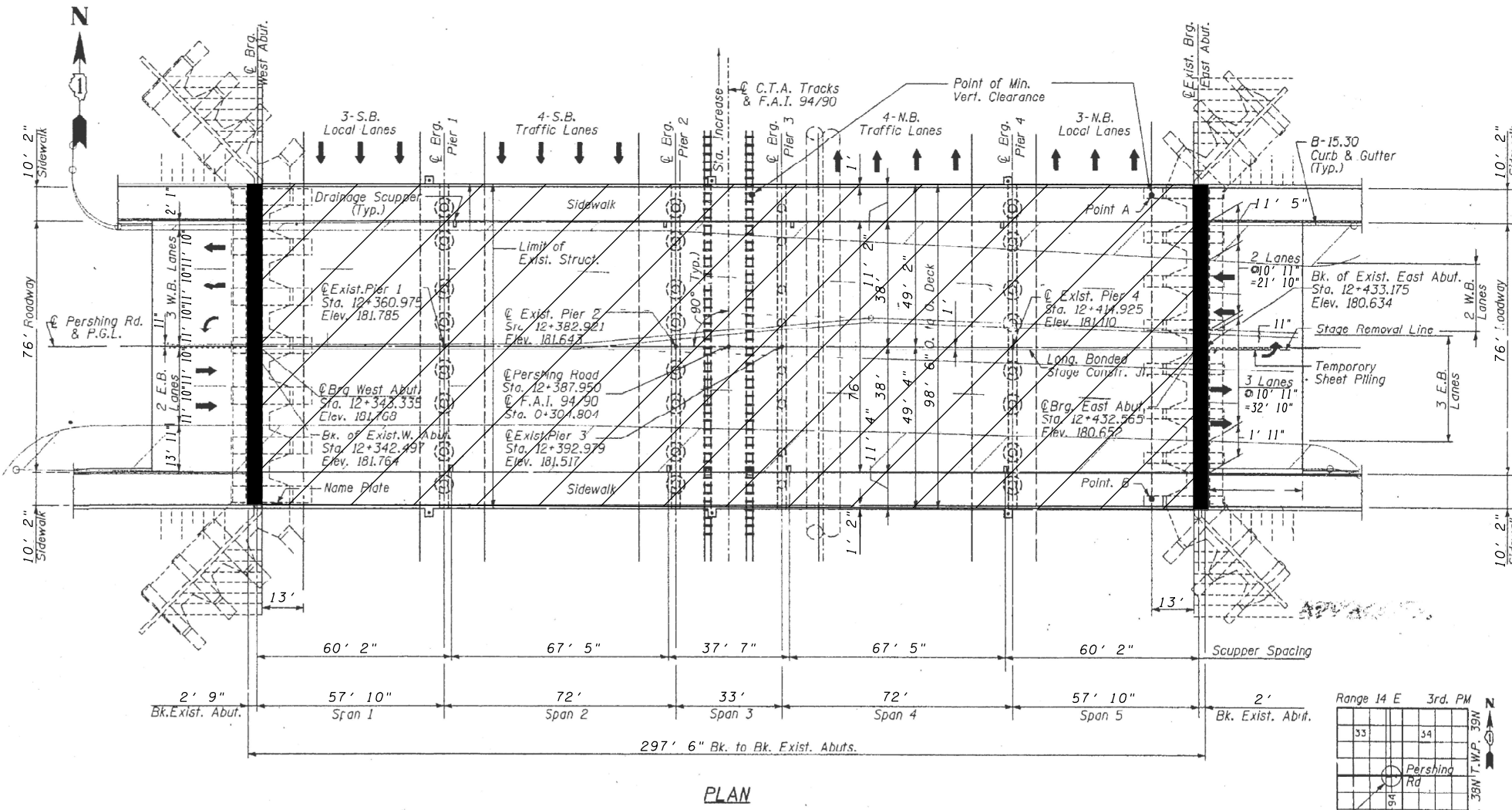
*D. Carl Puze*

**TOTAL BILL OF MATERIALS**

ITEM	UNIT	QUANTITY
BRIDGE DECK CONCRETE SEALER	SQ. FT.	31139
PREFORMED JOINT SEAL 1 1/2"	FOOT	193
POLYMER CONCRETE	CU. FT.	22

**LEGEND**

-  PREFORMED JOINT SEAL 1 1/2"
-  BRIDGE DECK CONCRETE SEALER



PLAN



Proj. Location  
S.N.: 016-0398

USER NAME = rohjp	DESIGNED -	REVISED -
PLOT SCALE = 100,000' / in.	DRAWN -	REVISED -
PLOT DATE = 9/14/2021	CHECKED -	REVISED -
	DATE -	REVISED -

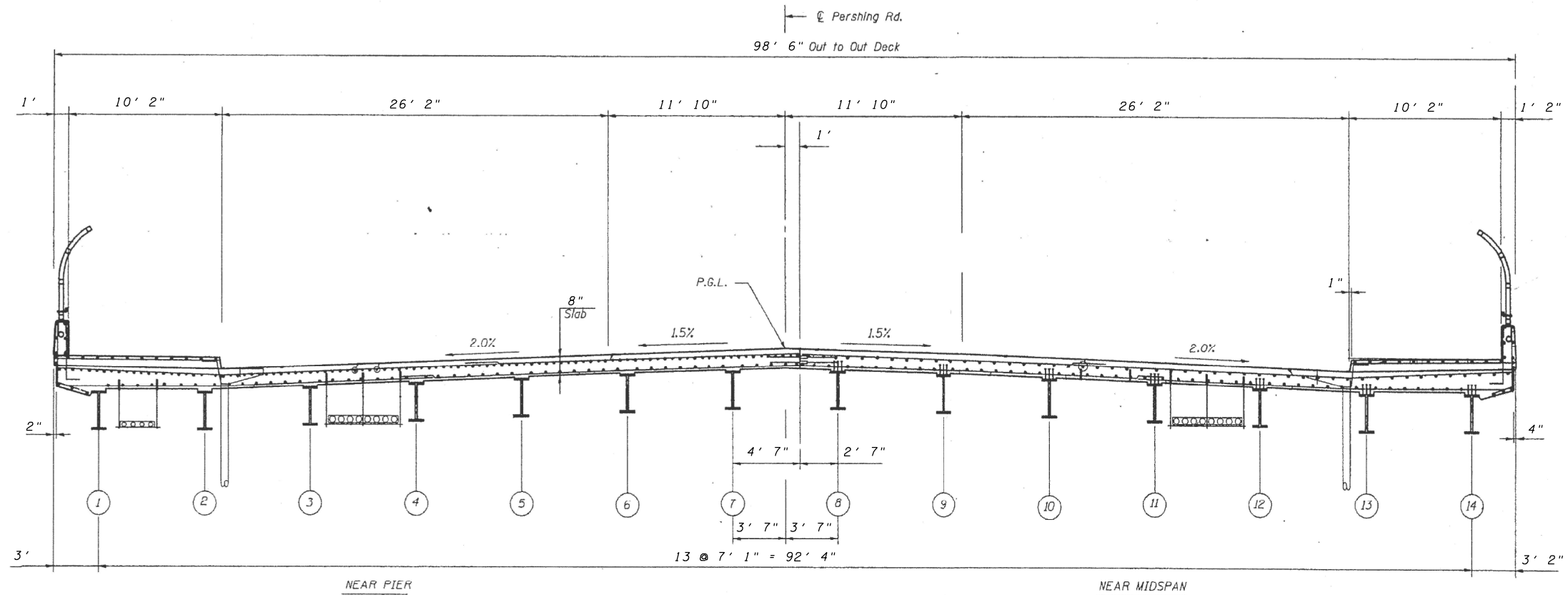
**STATE OF ILLINOIS  
DEPARTMENT OF TRANSPORTATION**

**LOCATION #1: SN 016-0398  
I-90/94 AT 39TH ST**

SCALE:	SHEET 1 OF 3 SHEETS	STA.	TO STA.
--------	---------------------	------	---------

F.A.I. RTE.	SECTION	COUNTY	TOTAL SHEETS	SHEET NO.
90/94	2021-114-B-R	COOK	21	6
CONTRACT NO. 62P49				
ILLINOIS		FED. AID PROJECT		

MODEL: Default  
FILE: N:\MS...  
C:\Users\jerry\AppData\Local\Temp\AutoCAD2021\AutoCAD2021-2022-11-03-10-00-00.dwg



**CROSS SECTION**  
(Looking East)

MODEL: Default  
 FILE NAME: p:\project\aw\_bentley.com\p\1\1\DOT\Documents\DOT Office\District 1\Project\194 EB @ 39th St\CAD\Drawings\194EB\194EB-39th-Cover.dgn

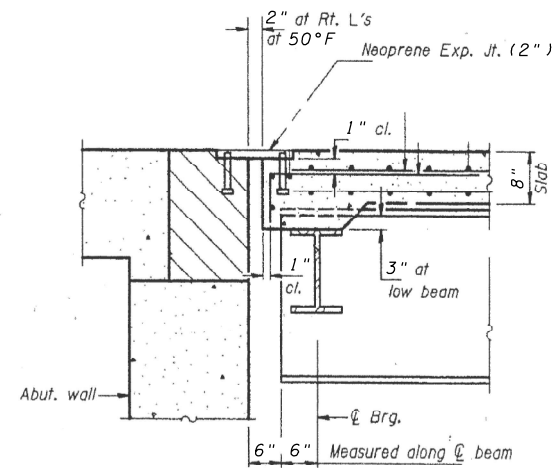
USER NAME = rothjp	DESIGNED -	REVISED -
	DRAWN -	REVISED -
PLOT SCALE = 100,0000' / in.	CHECKED -	REVISED -
PLOT DATE = 8/20/2021	DATE -	REVISED -

**STATE OF ILLINOIS  
DEPARTMENT OF TRANSPORTATION**

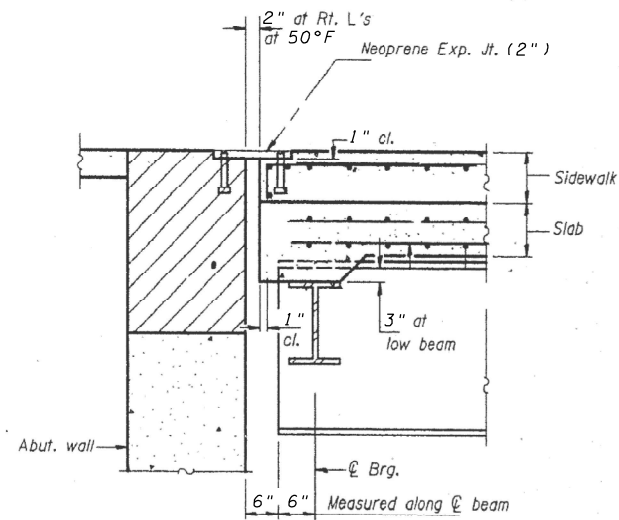
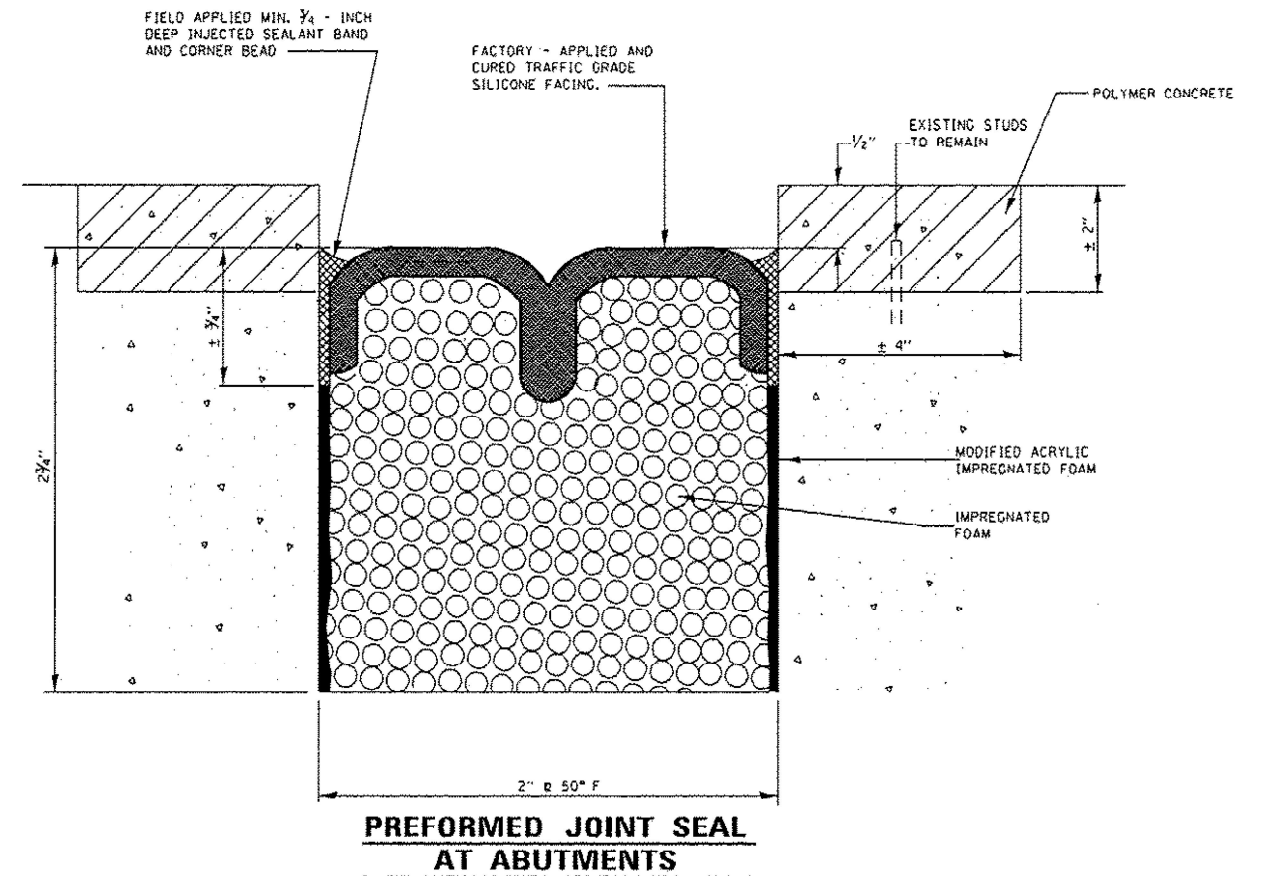
**LOCATION #1: SN 016-0398  
I-90/94 AT 39TH ST**

SCALE: SHEET 2 OF 3 SHEETS STA. TO STA.

F.A.I. RTE.	SECTION	COUNTY	TOTAL SHEETS	SHEET NO.
90/94	2021-114-B-R	COOK	21	7
CONTRACT NO. 62P49			ILLINOIS FED. AID PROJECT	



**SECTION THRU. EXISTING ABUTMENT**  
(East Abutment)



**SECTION THRU. EXISTING ABUTMENT**  
(West Abutment)

**GENERAL NOTES:**

PLAN DIMENSIONS AND DETAILS RELATIVE TO EXISTING PLANS ARE SUBJECT TO NOMINAL CONSTRUCTION VARIATIONS. THE CONTRACTOR SHALL FIELD VERIFY EXISTING DIMENSIONS AND DETAILS AFFECTING NEW CONSTRUCTION AND MAKE NECESSARY APPROVED ADJUSTMENT PRIOR TO CONSTRUCTION OR ORDERING OF MATERIALS. SUCH VARIATIONS SHALL NOT BE CAUSE FOR ADDITIONAL COMPENSATION FOR A CHANGE IN SCOPE OF THE WORK. HOWEVER, THE CONTRACTOR WILL BE PAID FOR THE QUANTITY ACTUALLY FURNISHED BASED AT THE UNIT PRICE BID FOR THE WORK.

REPAIR AREAS OF SPALLED OR DETERIORATED CONCRETE ADJACENT TO EXPANSION JOINT.

JOINT SEALS SHALL BE PREFORMED PRE-COMPRESSED, SILICONE COATED SELF-EXPANDING SEALANT SYSTEM.

MODEL: Default  
FILE NAME: p:\project-cw-bead-fy.com\FW\DOT\Documents\DOT Office\District 3\Project\ID:2021\ICAD\data\Design\ID:2021-arec\pahr-0160398.dgn

USER NAME = rothjp	DESIGNED -	REVISED -
	DRAWN -	REVISED -
PLOT SCALE = 100,0000' / in.	CHECKED -	REVISED -
PLOT DATE = 9/14/2021	DATE -	REVISED -

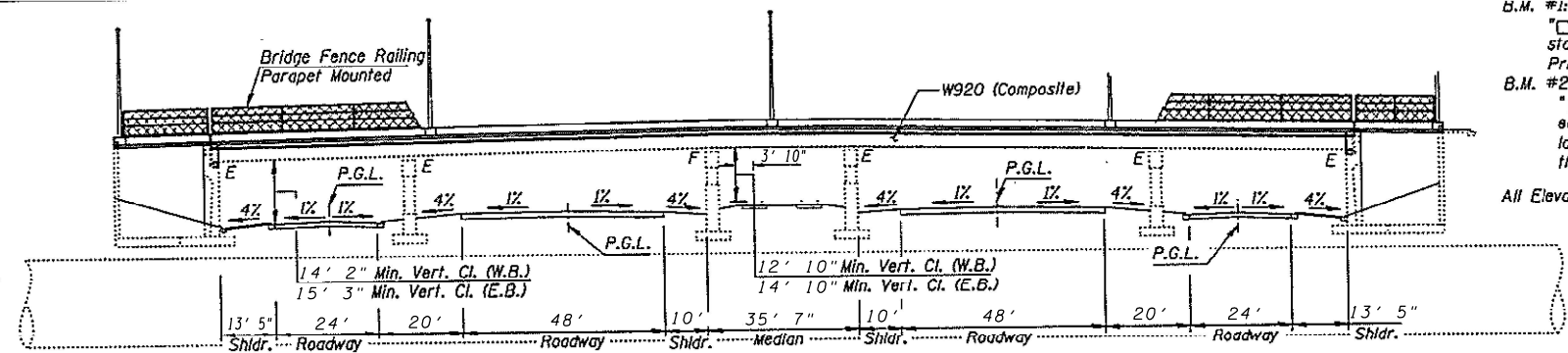
**STATE OF ILLINOIS  
DEPARTMENT OF TRANSPORTATION**

**LOCATION #1: SN 016-0398  
I-90/94 AT 39TH ST**

SCALE: SHEET 3 OF 3 SHEETS STA. TO STA.

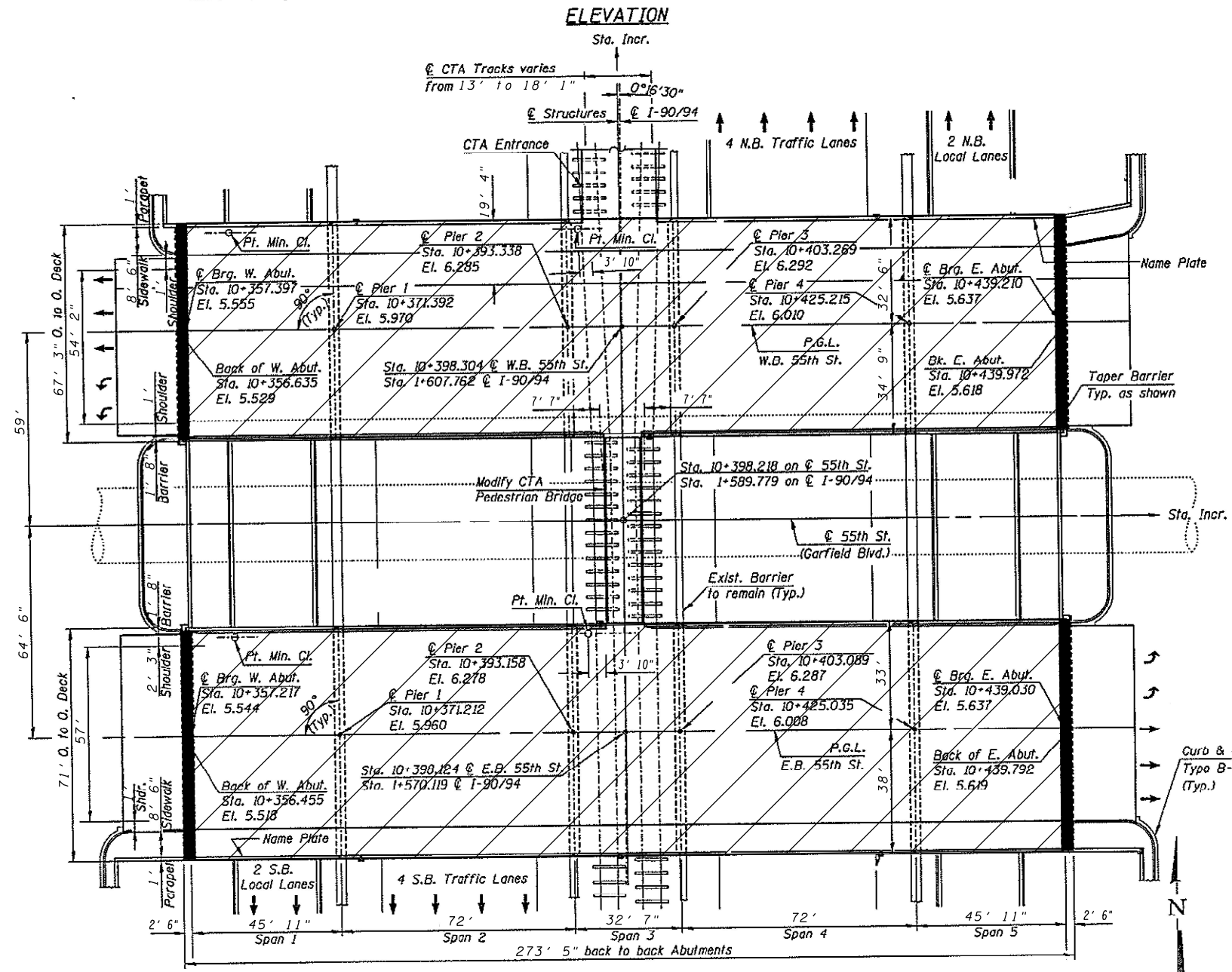
F.A.I. RTE.	SECTION	COUNTY	TOTAL SHEETS	SHEET NO.
90/94	2021-114-B-R	COOK	21	8
CONTRACT NO. 62P49			ILLINOIS FED. AID PROJECT	





B.M. #1: El. 4.818  
 "□" Cut on S.E. corner of concrete sign base of Amoco gas station at the S.E. corner of Garfield Blvd. (55th St.) and Princeton Ave.  
 B.M. #2: El. 5.690  
 "□" Cut on S.W. corner of traffic control box base on the east side of Wentworth Ave. about 3 m north of the E.B. lanes of Garfield Blvd. (55th St.) and about 18 m south of the W.B. lanes.  
 All Elevations are based on the Chicago City Datum (C.C.D.)

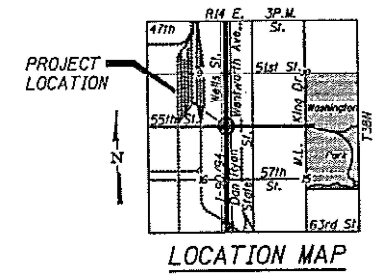
**EXISTING STRUCTURE DESCRIPTION:**  
 The existing dual structures (S.N. 016-1152 & S.N. 016-1153) are five-span continuous steel stringer bridges with reinforced concrete decks and bituminous overlays. The total length back to back of abutments is 83.337 m for each bridge. The spans are: 2 @ 13.995 m, 2 @ 21.946 m and 9.931 m. The structures are skewed 0°16'30" right relative to the centerline of F.A.I. Route 94 however, there is no skew between the deck and substructure. The multiple column piers and closed abutments are supported on spread footings.



Expires 11-30-2022  
*David Carl Puze*

**TOTAL BILL OF MATERIALS**

ITEM	UNIT	QUANTITY
BRIDGE DECK CONCRETE SEALER	SQ. FT.	40417
PREFORMED JOINT SEAL 1 1/2"	FOOT	277
POLYMER CONCRETE	CU. FT.	31



**LEGEND**

- PREFORMED JOINT SEAL 1 1/2"
- BRIDGE DECK CONCRETE SEALER

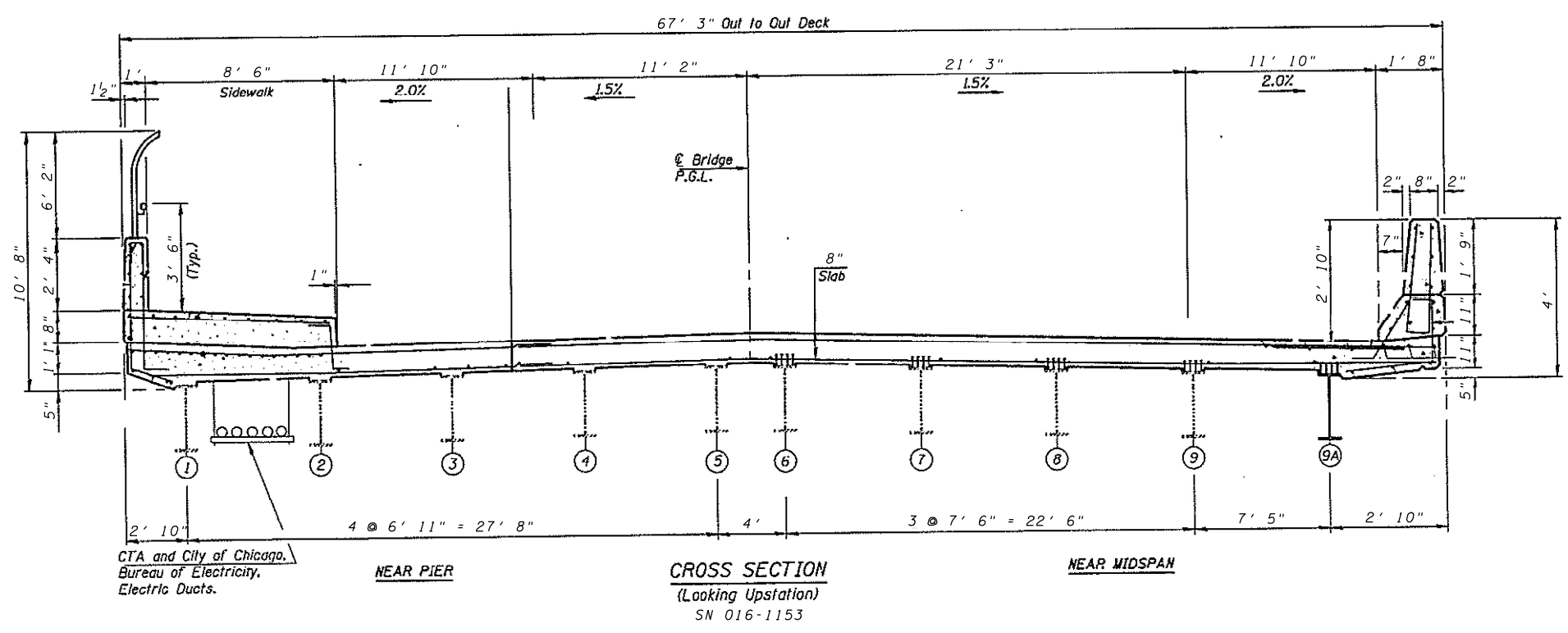
MODEL: P:\dwg\11111111.dwg  
 FILE NAME: 11111111.dwg  
 PROJECT: 11111111  
 OFFICE: 11111111  
 DATE: 9/14/2021

USER NAME = rothip	DESIGNED -	REVISED -
	DRAWN -	REVISED -
PLOT SCALE = 100,0000' / in.	CHECKED -	REVISED -
PLOT DATE = 9/14/2021	DATE -	REVISED -

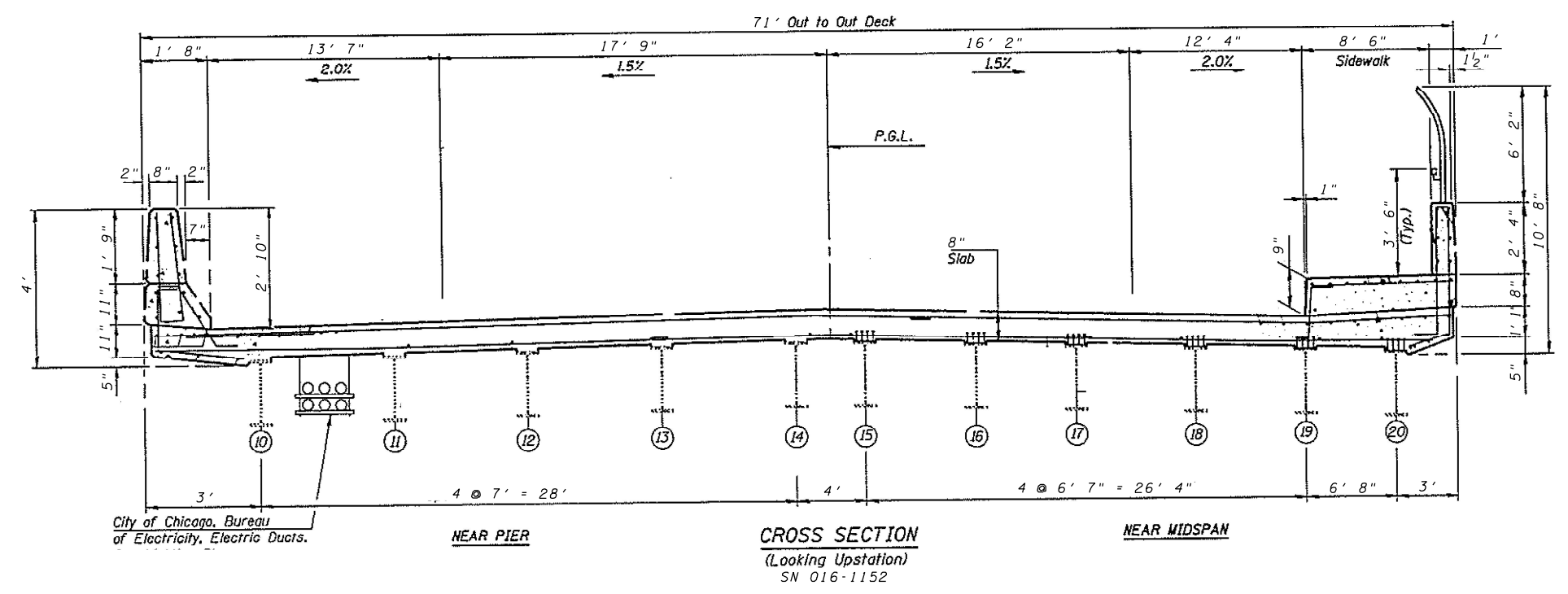
**STATE OF ILLINOIS  
 DEPARTMENT OF TRANSPORTATION**

**LOCATION #2 & #3: SN 016-1152 & SN 016-1153  
 I-90/94 AT 55TH ST**  
 SCALE: SHEET 1 OF 3 SHEETS STA. TO STA.

F.A.I. RTE. 90/94	SECTION 2021-114-B-R	COUNTY COOK	TOTAL SHEETS 21	SHEET NO. 9
ILLINOIS FED. AID PROJECT			CONTRACT NO. 62P49	



CTA and City of Chicago, Bureau of Electricity, Electric Ducts.  
**CROSS SECTION (Looking Upstation)**  
 SN 016-1153



City of Chicago, Bureau of Electricity, Electric Ducts.  
**CROSS SECTION (Looking Upstation)**  
 SN 016-1152

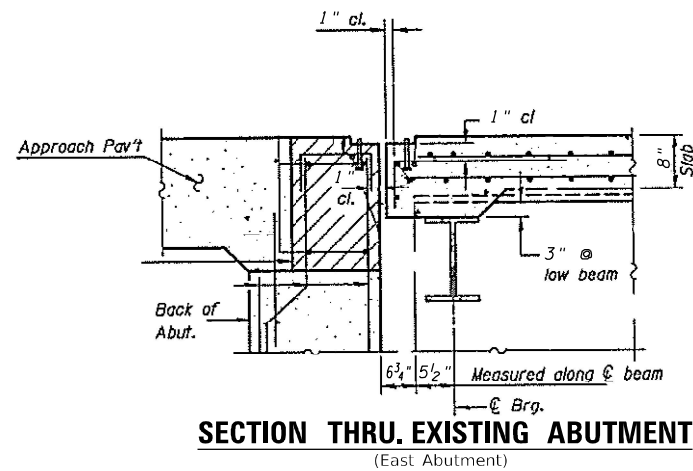
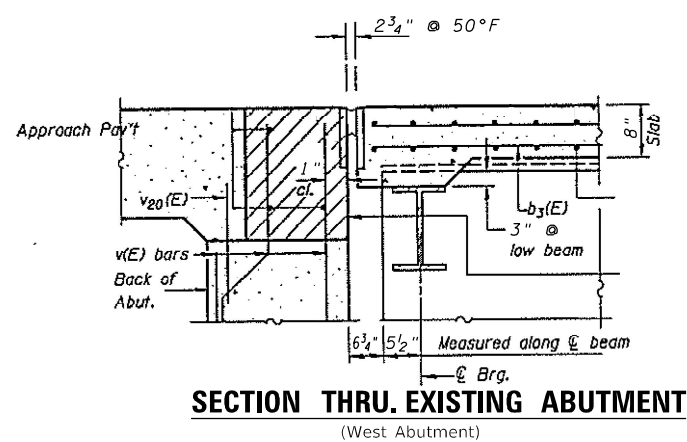
MODEL: Default  
 FILE NAME: p:\ultra-cw-bead\by.com\PIV\DOT\Documents\DOT\Office\District\_1\Projects\194\_EB @ Dobson Rd\CADD\data\Design\194xxxxx-alt-cover.dgn

USER NAME = rothp	DESIGNED -	REVISED -
	DRAWN -	REVISED -
PLOT SCALE = 100,0000' / in.	CHECKED -	REVISED -
PLOT DATE = 8/20/2021	DATE -	REVISED -

**STATE OF ILLINOIS  
 DEPARTMENT OF TRANSPORTATION**

**LOCATION #2 & #3: SN 016-1152 & SN 016-1153  
 I-90/94 AT 55TH ST**  
 SCALE: SHEET 2 OF 3 SHEETS STA. TO STA.

F.A.I. RTE. 90/94	SECTION 2021-114-B-R	COUNTY COOK	TOTAL SHEETS 21	SHEET NO. 10
				CONTRACT NO. 62P49
ILLINOIS FED. AID PROJECT				

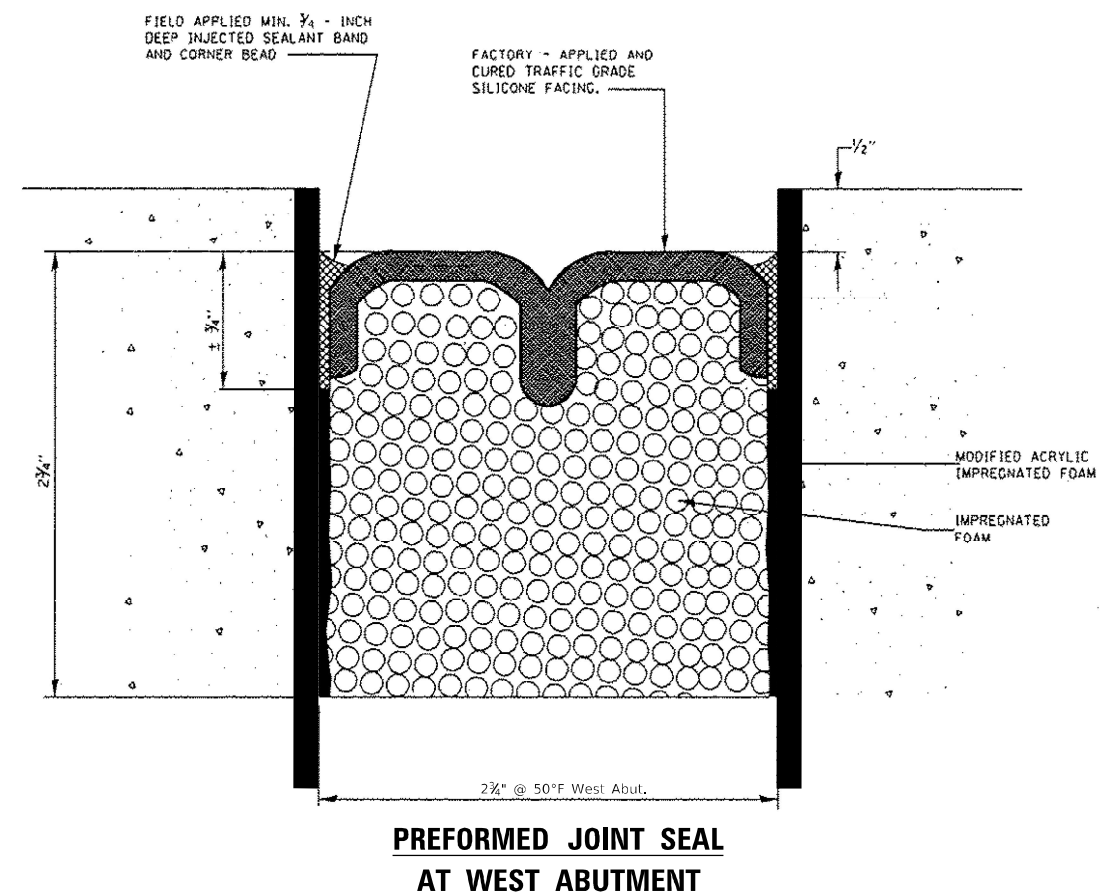
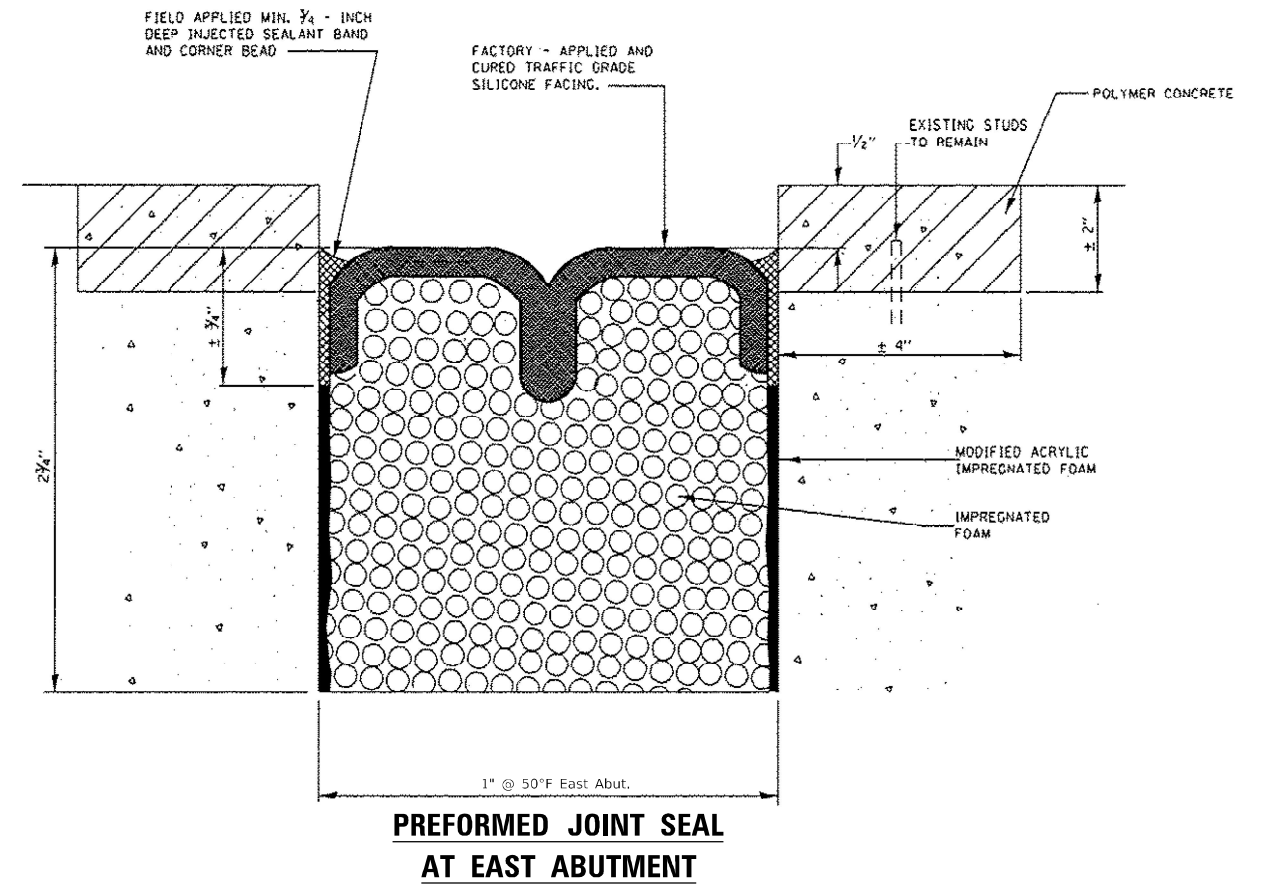


**GENERAL NOTES:**

PLAN DIMENSIONS AND DETAILS RELATIVE TO EXISTING PLANS ARE SUBJECT TO NOMINAL CONSTRUCTION VARIATIONS. THE CONTRACTOR SHALL FIELD VERIFY EXISTING DIMENSIONS AND DETAILS AFFECTING NEW CONSTRUCTION AND MAKE NECESSARY APPROVED ADJUSTMENT PRIOR TO CONSTRUCTION OR ORDERING OF MATERIALS. SUCH VARIATIONS SHALL NOT BE CAUSE FOR ADDITIONAL COMPENSATION FOR A CHANGE IN SCOPE OF THE WORK. HOWEVER, THE CONTRACTOR WILL BE PAID FOR THE QUANTITY ACTUALLY FURNISHED BASED AT THE UNIT PRICE BID FOR THE WORK.

REPAIR AREAS OF SPALLED OR DETERIORATED CONCRETE ADJACENT TO EXPANSION JOINT.

JOINT SEALS SHALL BE PREFORMED PRE-COMPRESSED, SILICONE COATED SELF-EXPANDING SEALANT SYSTEM.



**STATE OF ILLINOIS  
DEPARTMENT OF TRANSPORTATION**

**LOCATION #2 & #3: SN 016-1152 & SN 016-1153  
I-90/94 AT 55TH ST**

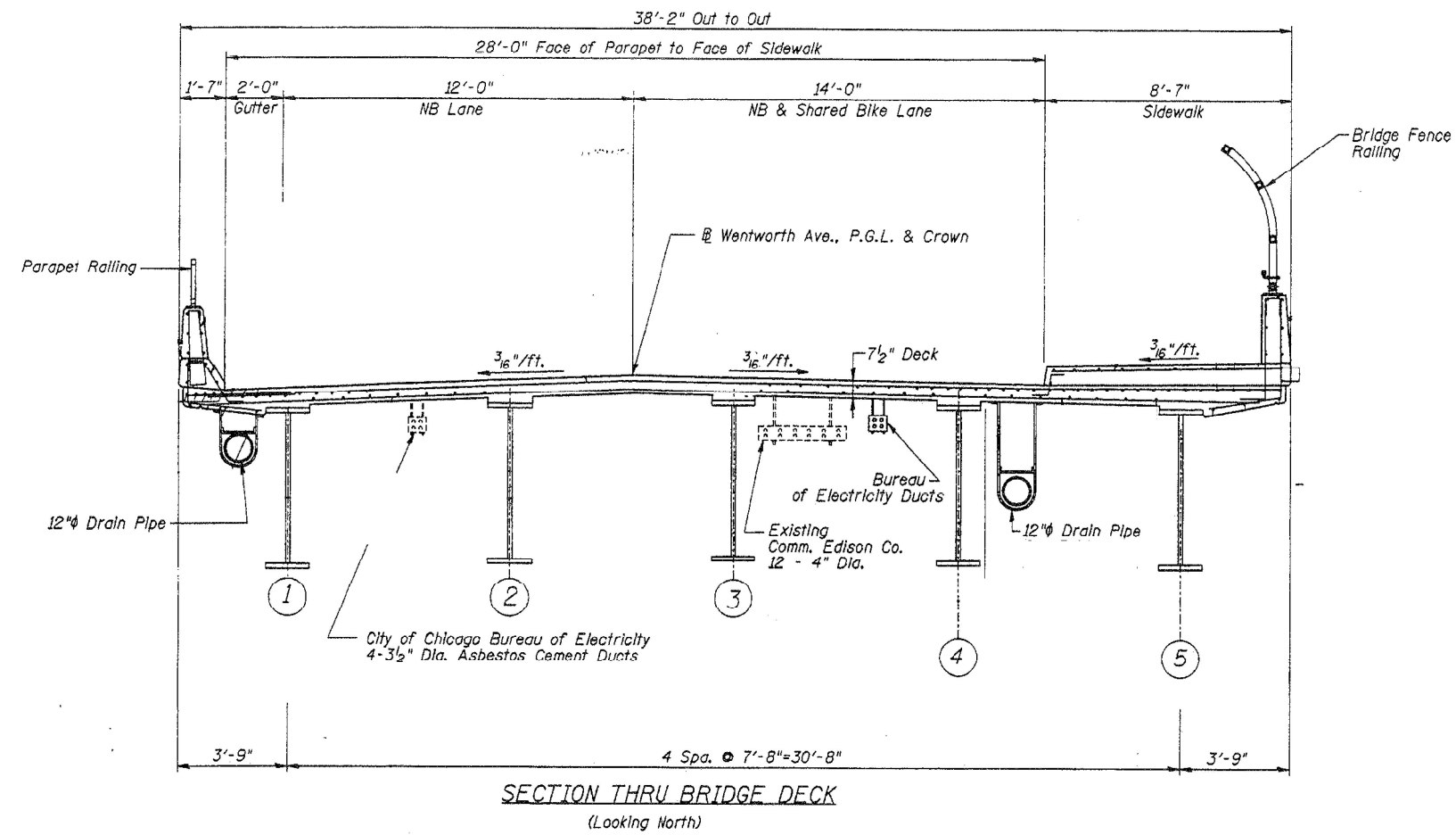
F.A.I. RTE.	SECTION	COUNTY	TOTAL SHEETS	SHEET NO.
90/94	2021-114-B-R	COOK	21	11
CONTRACT NO. 62P49				

SCALE: SHEET 3 OF 3 SHEETS STA. TO STA.

ILLINOIS FED. AID PROJECT







MODEL: Default  
 FILE NAME: p:\ultra-cw-beadby.com\PW\DOT\Documents\DOT Office\District 1\Project\194 EB @ Dobson Rd\CADD\data\Design\12xxxxx\alt-cover.dgn

USER NAME = rothjp	DESIGNED -	REVISED -
	DRAWN -	REVISED -
PLOT SCALE = 100,0000' / in.	CHECKED -	REVISED -
PLOT DATE = 8/20/2021	DATE -	REVISED -

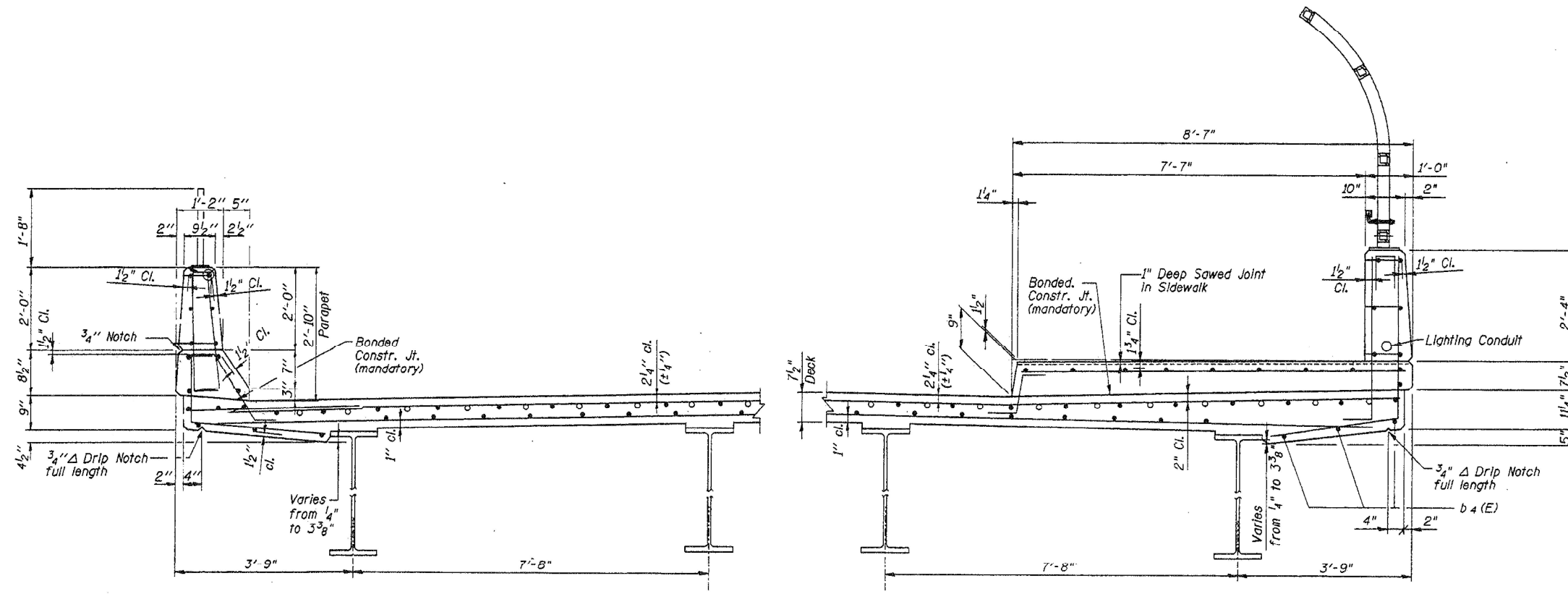
**STATE OF ILLINOIS  
DEPARTMENT OF TRANSPORTATION**

**LOCATION #4: SN 016-1007  
I-90/94 AT WENTWORTH AVE**

SCALE: SHEET 2 OF 3 SHEETS STA. TO STA.

F.A.I. RTE.	SECTION	COUNTY	TOTAL SHEETS	SHEET NO.
90/94	2021-114-B-R	COOK	21	13
CONTRACT NO. 62P49				
ILLINOIS FED. AID PROJECT				

# FOR INFORMATION ONLY



**SECTION THROUGH BRIDGE DECK**  
(Parapet Fence Railing)

**SECTION THROUGH BRIDGE DECK**  
(Bridge Fence Railing)

# FOR INFORMATION ONLY

MODEL: Default  
 FILE NAME: p:\project\sw\_bentley.com\p\id\dot\Documents\DOT Office\District 3\Project\ID120221\CADD\data\Design\ID120221-repairs-016-1007.dgn

USER NAME = rothjp	DESIGNED -	REVISED -
	DRAWN -	REVISED -
PLOT SCALE = 100,0000' / in.	CHECKED -	REVISED -
PLOT DATE = 9/20/2021	DATE -	REVISED -

**STATE OF ILLINOIS  
DEPARTMENT OF TRANSPORTATION**

**LOCATION #4: SN 016-1007  
I-90/94 AT WENTWORTH AVE**

SCALE: SHEET 3 OF 3 SHEETS STA. TO STA.

F.A.I. RTE.	SECTION	COUNTY	TOTAL SHEETS	SHEET NO.
90/94	2021-114-B-R	COOK	21	14
CONTRACT NO. 62P49				
ILLINOIS FED. AID PROJECT				

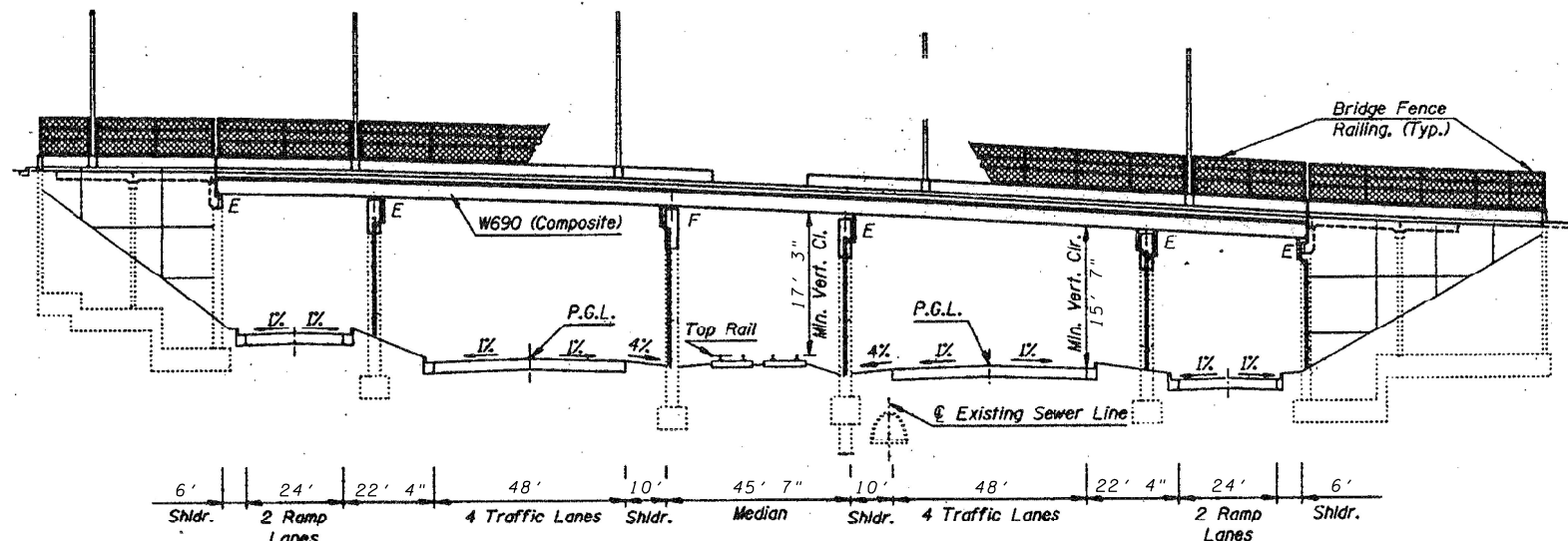
STATE OF ILLINOIS  
DEPARTMENT OF TRANSPORTATION

- B.M. #69: El. 5.819  
"□" Cut on top of concrete light pole base at the southwest corner of 69th St. and Lafayette Ave.
- B.M. #E: El. -1.282  
"□" Cut on top of first concrete light pole base north of East Abutment, east side of Dan Ryan northbound lanes. L.P.# RP11
- B.M. #W: El. 0.173  
"□" Cut on top of first concrete light pole base north of West Abutment, west side of Dan Ryan southbound lanes. L.P.# RJ12

All Elevations are based on the Chicago City Datum (C.C.D.)

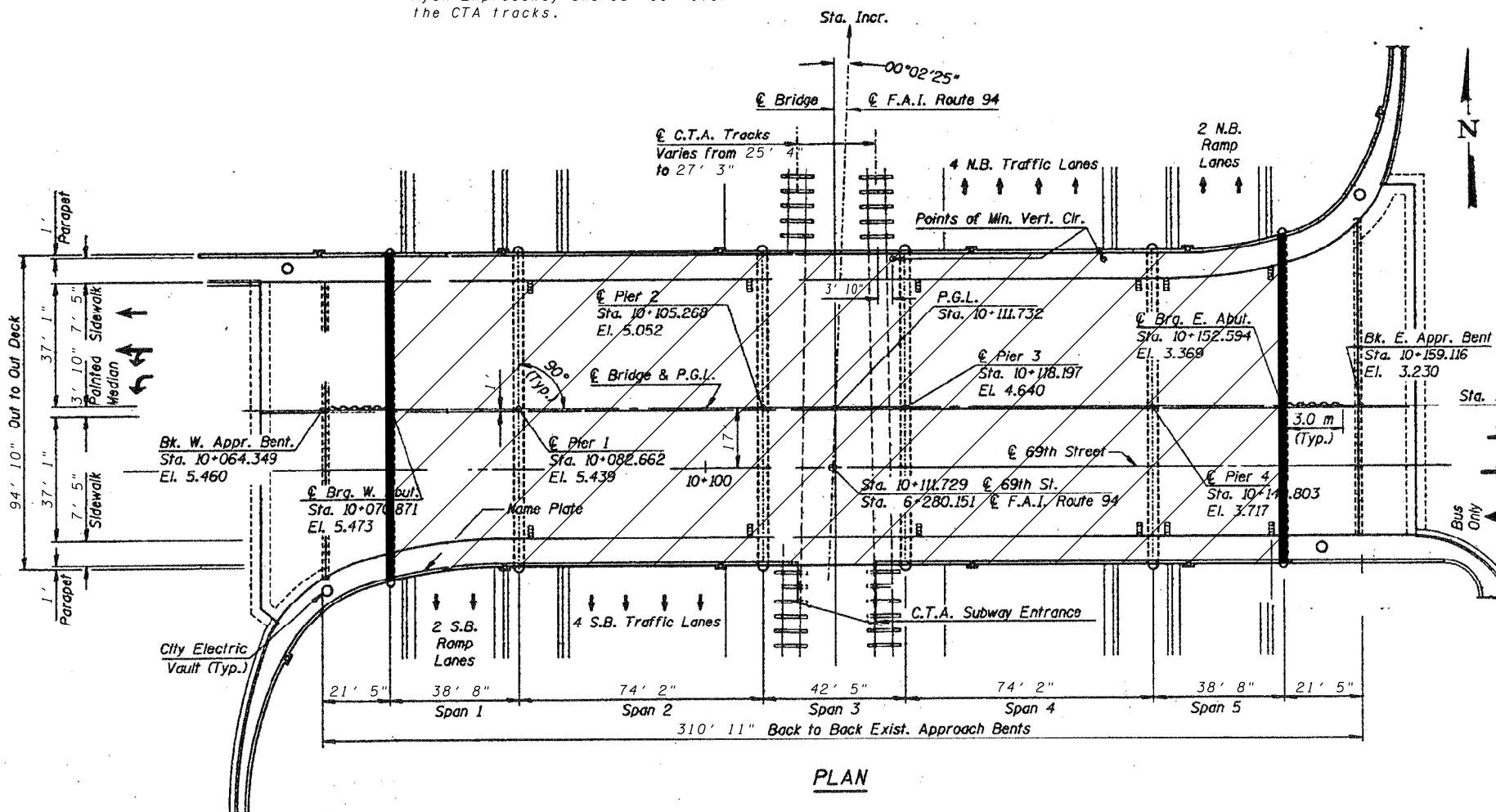
**EXISTING STRUCTURE DESCRIPTION**

The existing bridge (S.N. 016-0189) is a five-span precast, prestressed concrete box beam bridge with a bituminous overlay. The total length back to back of abutments is 82.575 m. The spans are 2 @ 11.779 m, 2 @ 22.873 m, and 12.662 m. The structure is skewed 0°02'25" left relative to the centerline of F.A.I. Route 94, however there is no skew between the deck and the substructure. The multi-column piers and closed abutments are supported on spread footings with the pier adjacent to the existing sewer line supported by concrete caissons.



**ELEVATION**

The existing minimum vertical clearance is 15' over the Dan Ryan Expressway and 15' 11" over the CTA tracks.



**PLAN**



Expires 11-30-2022

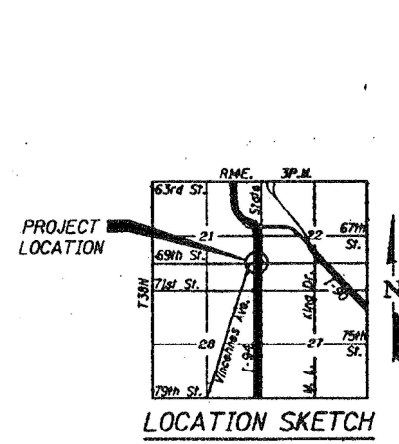
*David Carl Puzev*

**TOTAL BILL OF MATERIALS**

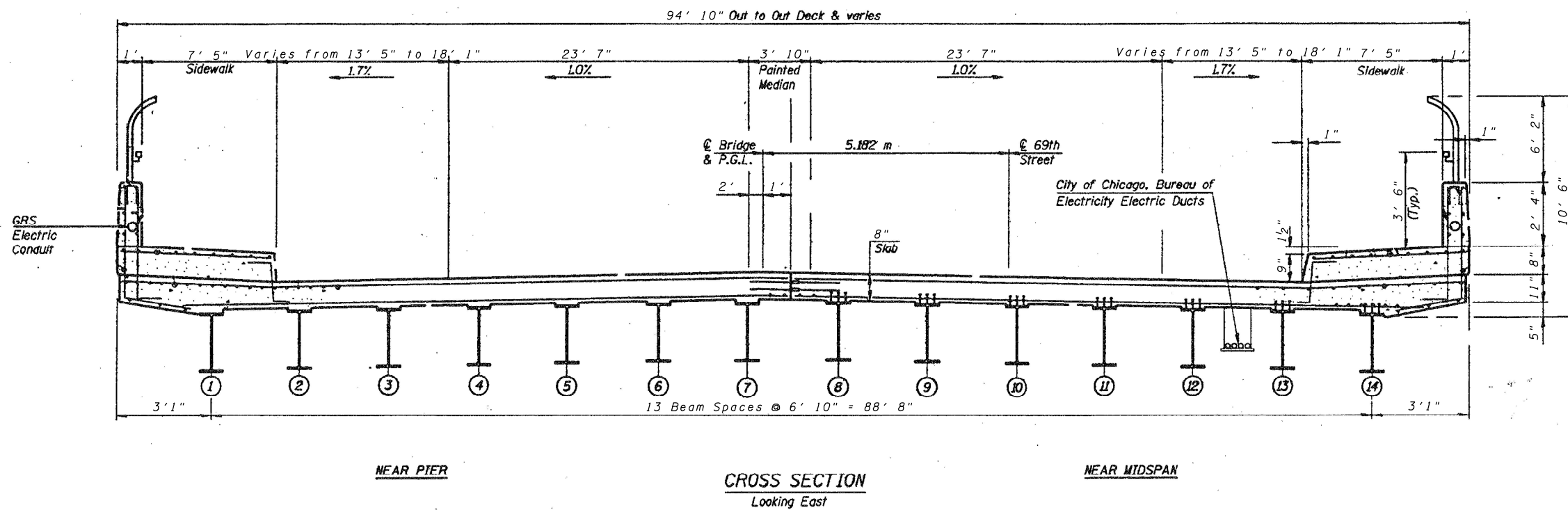
ITEM	UNIT	QUANTITY
BRIDGE DECK CONCRETE SEALER	SQ. FT.	25500
PREFORMED JOINT SEAL 1 1/2"	FOOT	190
POLYMER CONCRETE	CU. FT.	11

**LEGEND**

- PREFORMED JOINT SEAL 1 1/2"
- BRIDGE DECK CONCRETE SEALER



USER NAME = rothjp	DESIGNED -	REVISED -	<b>STATE OF ILLINOIS DEPARTMENT OF TRANSPORTATION</b>	<b>LOCATION #5: SN 016-0189 I-90/94 AT 69TH ST</b>		F.A.I. RTE. 90/94	SECTION 2021-114-B-R	COUNTY COOK	TOTAL SHEETS 21	SHEET NO. 15	
PLOT SCALE = 100,0000' / in.	CHECKED -	REVISED -		SCALE:	SHEET 1 OF 3 SHEETS	STA. TO STA.	CONTRACT NO. 62P49		ILLINOIS FED. AID PROJECT		
PLOT DATE = 9/14/2021	DATE -	REVISED -									



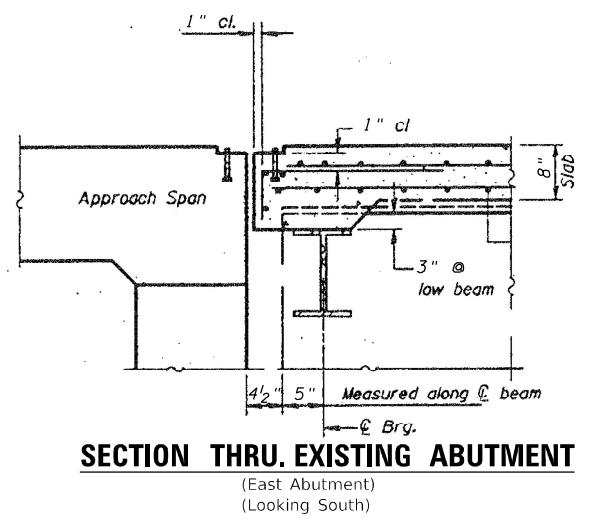
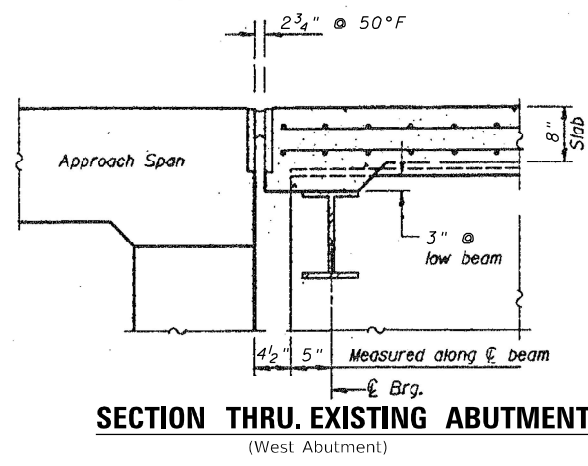
MODEL: Default  
 FILE NAME: p:\ultra-cw-bead-fy.com\PIV\DOT\Documents\DOT Office\District 1\Project\194 EB @ 69th Rd\CADD\data\Design\DOT\ultra-cw-bead-fy.dgn

USER NAME = rothjp	DESIGNED -	REVISED -
	DRAWN -	REVISED -
PLOT SCALE = 100,0000' / in.	CHECKED -	REVISED -
PLOT DATE = 8/20/2021	DATE -	REVISED -

**STATE OF ILLINOIS**  
**DEPARTMENT OF TRANSPORTATION**

<b>LOCATION #5: SN 016-0189</b> <b>I-90/94 AT 69TH ST</b>	
SCALE:	SHEET 2 OF 3 SHEETS STA. TO STA.

F.A.I. RTE. 90/94	SECTION 2021-114-B-R	COUNTY COOK	TOTAL SHEETS 21	SHEET NO. 16
CONTRACT NO. 62P49				
ILLINOIS FED. AID PROJECT				

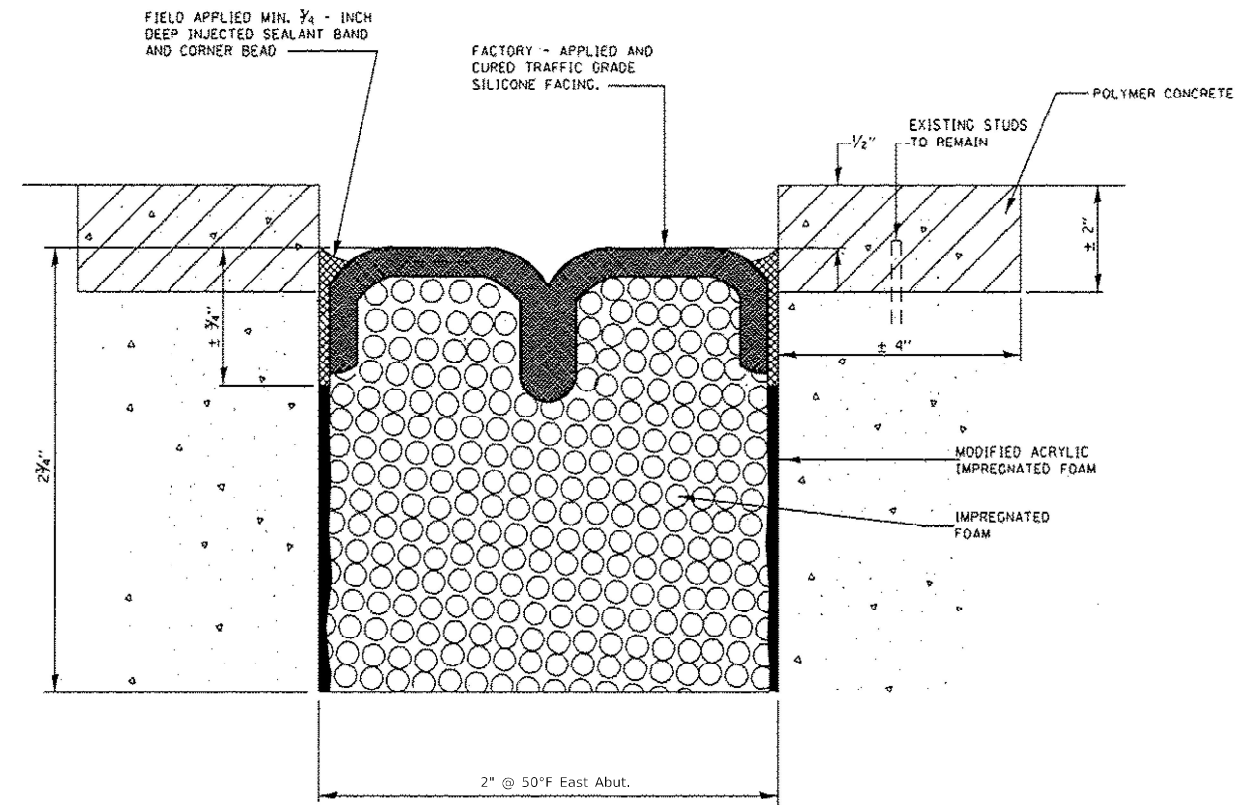


**GENERAL NOTES:**

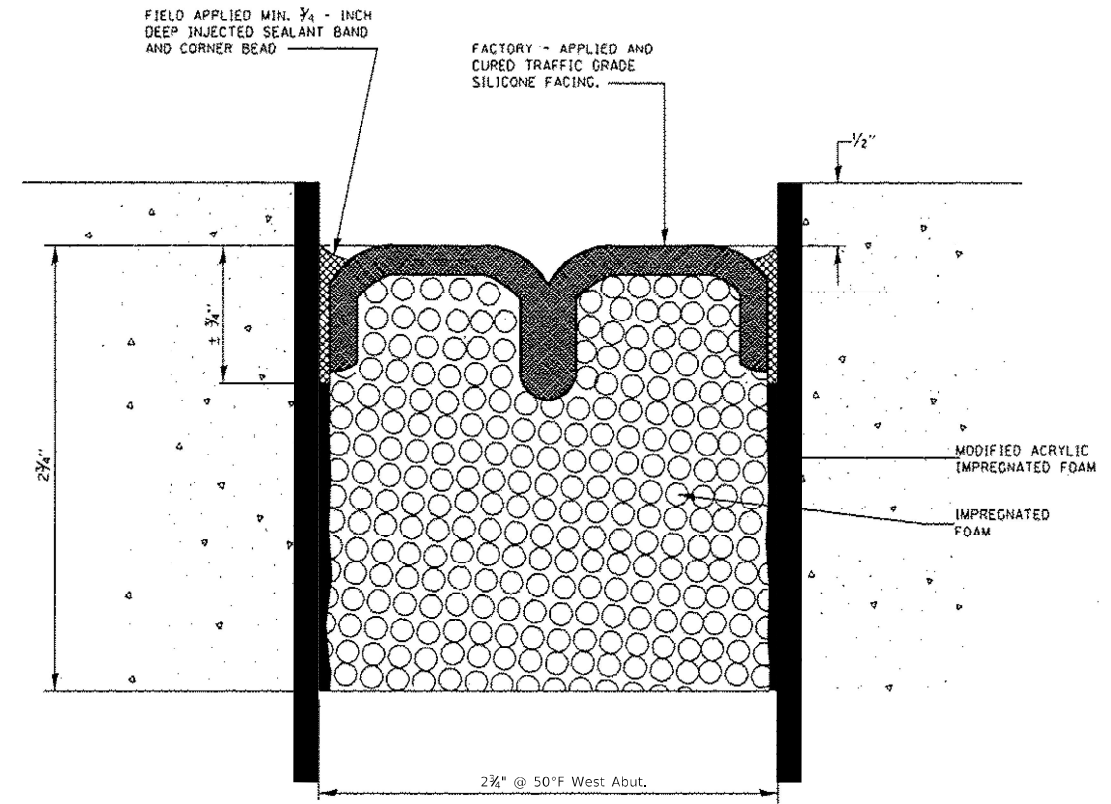
PLAN DIMENSIONS AND DETAILS RELATIVE TO EXISTING PLANS ARE SUBJECT TO NOMINAL CONSTRUCTION VARIATIONS. THE CONTRACTOR SHALL FIELD VERIFY EXISTING DIMENSIONS AND DETAILS AFFECTING NEW CONSTRUCTION AND MAKE NECESSARY APPROVED ADJUSTMENT PRIOR TO CONSTRUCTION OR ORDERING OF MATERIALS. SUCH VARIATIONS SHALL NOT BE CAUSE FOR ADDITIONAL COMPENSATION FOR A CHANGE IN SCOPE OF THE WORK. HOWEVER, THE CONTRACTOR WILL BE PAID FOR THE QUANTITY ACTUALLY FURNISHED BASED AT THE UNIT PRICE BID FOR THE WORK.

REPAIR AREAS OF SPALLED OR DETERIORATED CONCRETE ADJACENT TO EXPANSION JOINT.

JOINT SEALS SHALL BE PREFORMED PRE-COMPRESSED, SILICONE COATED SELF-EXPANDING SEALANT SYSTEM.



**PREFORMED JOINT SEAL AT EAST ABUTMENT**



**PREFORMED JOINT SEAL AT WEST ABUTMENT**

MODEL: Default  
 FILE NAME: p:\project\62p49\dwg\62p49.dwg  
 PROJECT: I-90/94 AT 69TH ST  
 SHEET: 3 OF 3  
 DATE: 9/24/2021

USER NAME = rothjp	DESIGNED -	REVISED -
PLOT SCALE = 100,0000' / in.	CHECKED -	REVISED -
PLOT DATE = 9/24/2021	DATE -	REVISED -

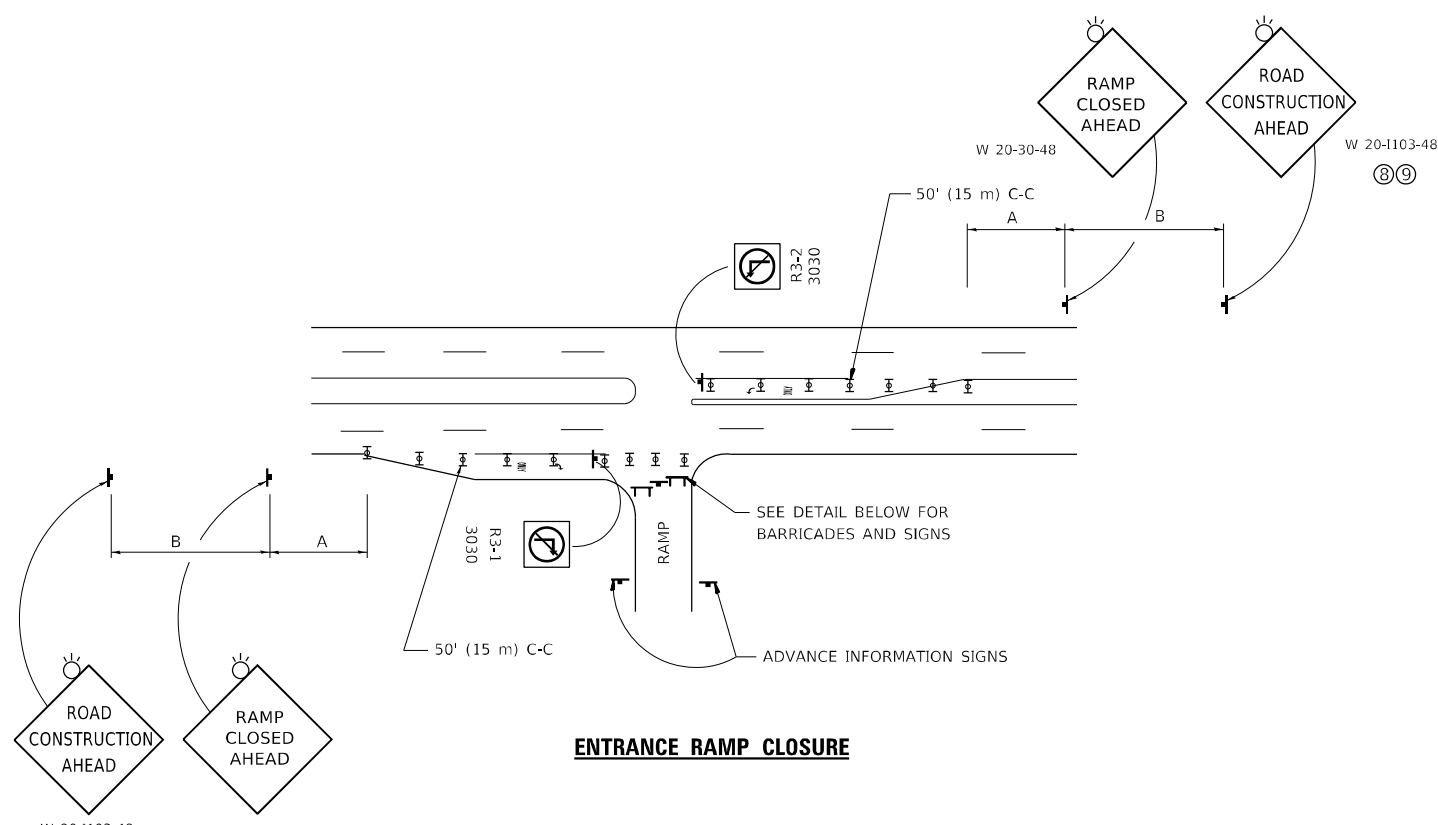
**STATE OF ILLINOIS  
DEPARTMENT OF TRANSPORTATION**

**LOCATION #5: SN 016-0189  
I-90/94 AT 69TH ST**

SCALE: SHEET 3 OF 3 SHEETS STA. TO STA.

F.A.I. RTE.	SECTION	COUNTY	TOTAL SHEETS	SHEET NO.
90/94	2021-114-B-R	COOK	21	17
CONTRACT NO. 62P49				
ILLINOIS FED. AID PROJECT				

MODEL: Default  
 FILE NAME: \\pilotetaw.bentley.com\FWIDOT\Documents\DOT Office\District 11\Projects\LA EB @ Dobson Rd\CADD\data\Design\DistStd.dgn

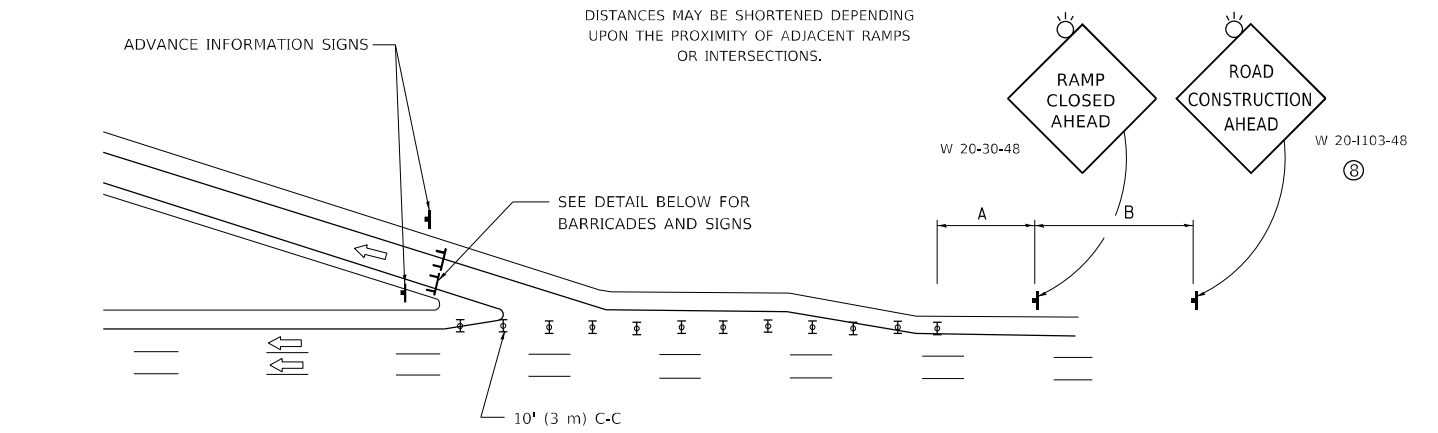


**ENTRANCE RAMP CLOSURE**

SIGN SPACING TABLE

FACILITY	DISTANCE BETWEEN SIGNS	
	A	B
EXPRESSWAY >24 HOURS	1000' (300 m)	1500' (450 m)
EXPRESSWAY ≤24 HOURS	500' (150 m)	500' (150 m)
ARTERIAL 55 MPH	500' (150 m)	500' (150 m)
ARTERIAL 50-45 MPH	350' (100 m)	350' (100 m)
ARTERIAL <45 MPH	200' (60 m)	200' (60 m)

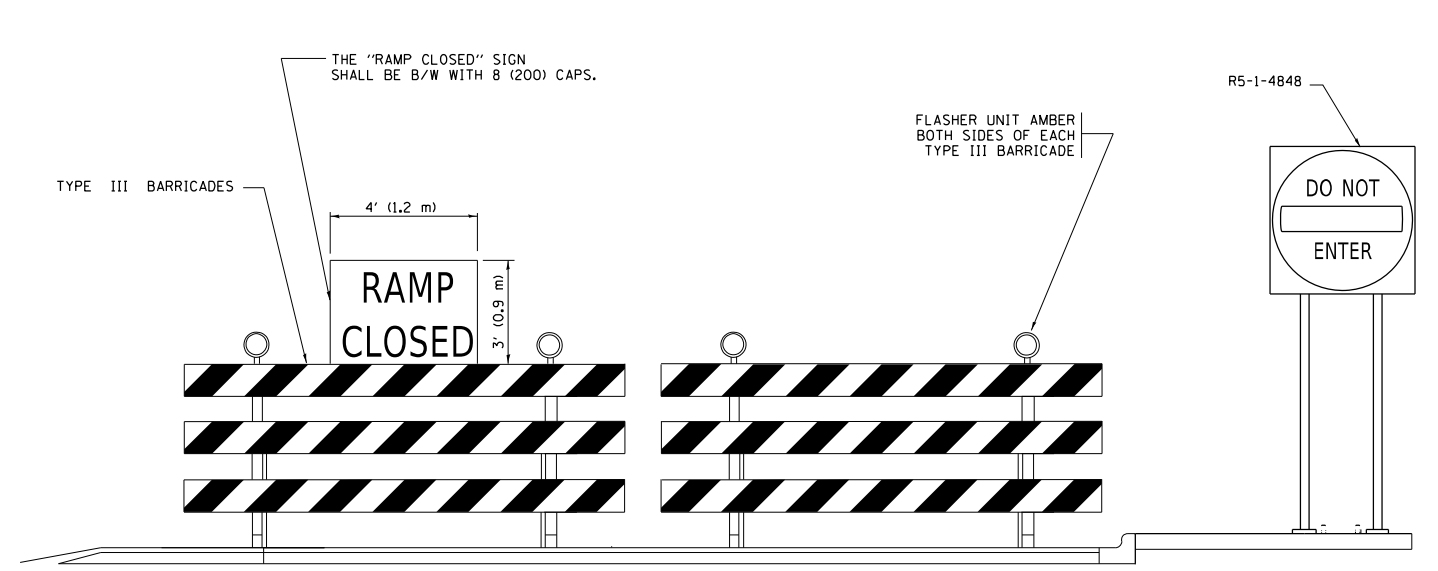
DISTANCES MAY BE SHORTENED DEPENDING UPON THE PROXIMITY OF ADJACENT RAMPS OR INTERSECTIONS.



**EXIT RAMP CLOSURE**

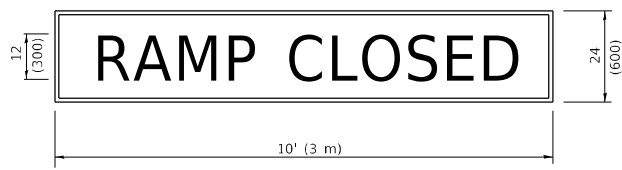
**SYMBOLS**

- ▬ TYPE II BARRICADE OR DRUM
- ▬ TYPE III BARRICADE WITH 2 FLASHING LIGHTS



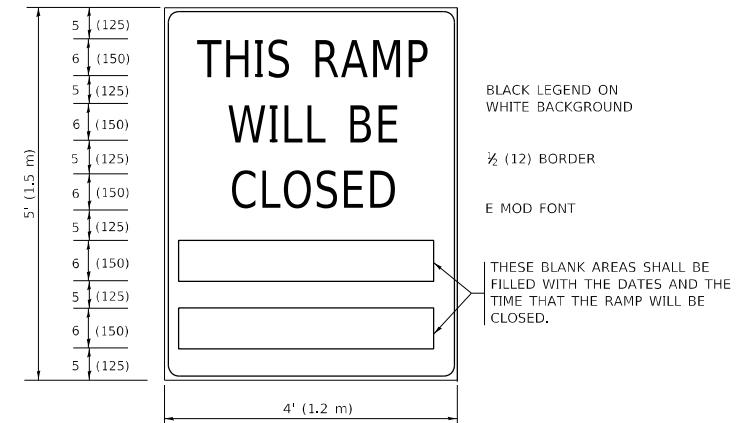
**DETAIL FOR REQUIRED BARRICADES & SIGNS**

**RAMP CLOSURE ADVANCE WARNING SIGN**



BLACK LEGEND ON ORANGE BACKGROUND MOUNTED DIAGONALLY  
 E MOD FONT  
 1 (25) BORDER  
 THESE SIGNS ARE REQUIRED ON ALL THE EXIT GUIDE SIGNS FOR EXIT RAMPS THAT WILL BE CLOSED FOR MORE THAN FOUR (4) CONSECUTIVE DAYS.

**RAMP CLOSURE ADVANCE INFORMATION SIGN**



BLACK LEGEND ON WHITE BACKGROUND  
 1/2 (12) BORDER  
 E MOD FONT  
 THESE BLANK AREAS SHALL BE FILLED WITH THE DATES AND THE TIME THAT THE RAMP WILL BE CLOSED.

THESE SIGNS ARE REQUIRED ON BOTH SIDES OF THE RAMP, MINIMUM OF 1 WEEK IN ADVANCE OF THE CLOSURE.  
 THESE SIGNS SHALL BE FABRICATED AND PAID FOR ACCORDING TO THE TEMPORARY INFORMATION SIGNING SPECIAL PROVISION

**GENERAL NOTES:**

- ① CONES MAY BE SUBSTITUTED FOR DRUMS OR TYPE II BARRICADES DURING DAY OPERATIONS. CONES SHALL BE A MINIMUM OF 28 (700) HIGH.
- ② VERTICAL BARRICADES SHALL NOT BE USED FOR RAMP CLOSURES.
- ③ A FLAGGER SHALL BE POSITIONED AT EACH CLOSED RAMP THAT IS OPEN TO CONSTRUCTION VEHICLES, PRECEDED BY A W20-7 FLAGGER WARNING SIGN.
- ④ ALL ROUTE MARKERS AND TRAILBLAZER ASSEMBLIES WHICH DIRECT MOTORISTS TO A CLOSED ENTRANCE RAMP SHALL BE COVERED WHEN THE RAMP IS CLOSED FOR MORE THAN FOUR (4) DAYS.
- ⑤ THE SIGNING AND BARRICADING WHICH IS REQUIRED BY THIS DETAIL SHALL BE INCLUDED IN THE COST OF TRAFFIC CONTROL AND PROTECTION (EXPRESSWAYS).
- ⑥ AUTHORIZATION FROM THE DISTRICT'S BUREAU OF TRAFFIC IS REQUIRED FOR ALL RAMP CLOSURES.
- ⑦ THE RAMP CLOSURE ADVANCE INFORMATION SIGNS SHALL BE ERECTED IF THE CLOSURE TIME EXCEEDS TWENTY-FOUR (24) HOURS. ADDITIONAL ADVANCE WARNING SIGNS ON EXIT GUIDE SIGNING WILL BE REQUIRED FOR EXIT RAMP CLOSURES THAT EXCEED FOUR (4) DAYS IN LENGTH.
- ⑧ ROAD CONSTRUCTION AHEAD SIGNS MAY BE OMITTED WHEN THIS DETAIL IS USED IN CONJUNCTION WITH OTHER TRAFFIC CONTROL THAT ALREADY INCLUDES A ROAD CONSTRUCTION AHEAD SIGN.
- ⑨ ARTERIAL ROAD CONSTRUCTION AHEAD SIGNS SHALL BE INSTALLED ON THE LEFT SIDE OF TRAFFIC IF THE MEDIAN IS MORE THAN 10 FT WIDE.

ALL DIMENSIONS ARE IN INCHES (MILLIMETERS) UNLESS OTHERWISE SHOWN.

USER NAME = rothjp	DESIGNED - D.W.S.	REVISED - S.P.B._01-07
PLOT SCALE = 100,0000' / in.	CHECKED -	REVISED - S.P.B._12-09
PLOT DATE = 8/20/2021	DATE - 02-83	REVISED - M.D._06-13
		REVISED - M.D._01-18

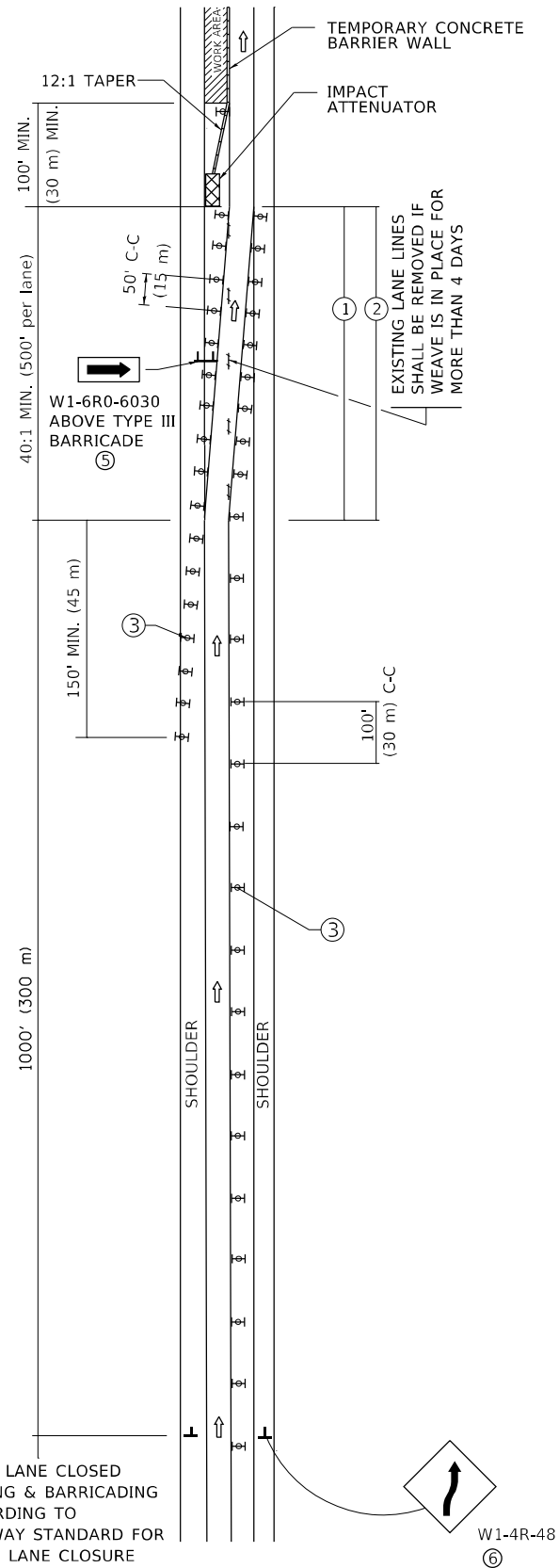
**STATE OF ILLINOIS  
 DEPARTMENT OF TRANSPORTATION**

**ENTRANCE\_AND\_EXIT\_RAMP  
 CLOSURE\_DETAILS**

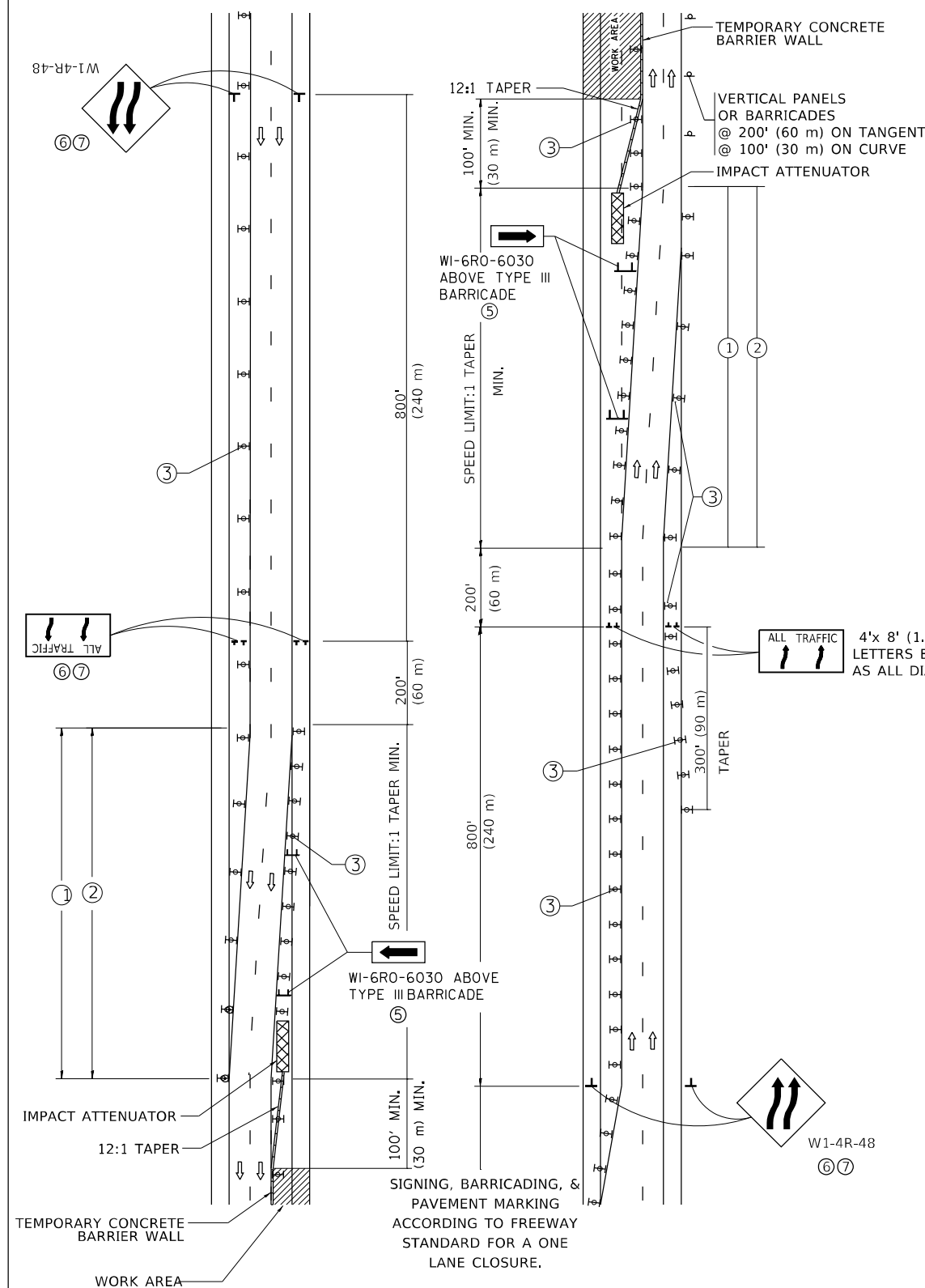
SCALE: NONE SHEET 1 OF 1 SHEETS STA. TO STA.

F.A.I. RTE.	SECTION	COUNTY	TOTAL SHEETS	SHEET NO.
90/94	2021-114-B-R	COOK	21	18
TC-08			CONTRACT NO. 62P49	
		ILLINOIS	FED. AID PROJECT	

# SINGLE LANE WEAVE



# MULTI-LANE WEAVE



### GENERAL NOTES:

- ① EXISTING CONFLICTING PAVEMENT MARKING LINES SHALL BE REMOVED. PAVEMENT MARKING REMOVAL SHALL NOT BE REQUIRED FOR SINGLE LANE WEAVES UNDER 4 DAYS IN DURATION.
- ② CONTINUOUS REFLECTIVE TEMPORARY PAVEMENT MARKING TAPE SHALL BE PLACED THROUGHOUT THE TAPER AND FOR 300' (90 m) ALONG SIDE THE WORK AREA WHERE THE CLOSURE TIME IS GREATER THAN FOURTEEN DAYS. THE LEFT EDGE LINE SHALL BE YELLOW AND THE RIGHT EDGE LINE SHALL BE WHITE. FOR MULTI-LANE WEAVES LANE LINES SHALL BE 5 INCH, 10'-30' (3 m-9 m) SKIP DASH, WHITE.
- ③ PLASTIC DRUMS WITH STEADY BURN LIGHTS AT 50' (15 m) C-C SPACING IN TAPERS AND 100' (30 m) C-C SPACING IN TANGENTS.
- ④ ALL SIGNS SHALL BE POST MOUNTED IF THE CLOSURE TIME EXCEEDS FOUR DAYS.
- ⑤ TYPE III BARRICADES MAY BE OMITTED FOR SINGLE-LANE WEAVES UNDER 24-HOURS IN DURATION. W1-6 SIGNS WILL STILL BE REQUIRED. IF THE WIDTH OF OFFSET IS LESS THAN 6' THEN THE TYPE III BARRICADE WITH ATTACHED ARROW SIGN PANEL CAN BE ELIMINATED IN THE TAPER AREAS.
- ⑥ WHEN THE LENGTH OF THE SHIFTED SEGMENT (DISTANCE BETWEEN WEAVE POINTS) IS LESS THAN 1500', DOUBLE REVERSE CURVE SIGNS (W24-1) SHOULD BE USED INSTEAD OF THE REVERSE CURVE (W1-4) SIGNS. ARROWS ON THE 4'X8' "ALL TRAFFIC" SIGNS SHALL BE THE SAME SHAPE.
- ⑦ THE NUMBER OF ARROWS ON THESE SIGNS SHALL MATCH THE NUMBER OF LANES OPEN TO TRAFFIC.

### SYMBOLS

- DIRECTION OF TRAFFIC
- WORK AREA
- SIGN ON PORTABLE OR PERMANENT SUPPORT
- TYPE II BARRICADE OR DRUM WITH MONO-DIRECTIONAL STEADY BURNING LIGHT
- TEMPORARY CONCRETE BARRIER WALL
- IMPACT ATTENUATOR
- W1-4R-48
- W24-1-48

ALL DIMENSIONS ARE IN INCHES (MILLIMETERS) UNLESS OTHERWISE SHOWN

MODEL: Default  
FILE NAME: p:\ultra-cw-beadby.com\FW\DOT\Documents\DOT Office\District: 11\projects\120221\CD\DATA\Design\DistStd.dgn

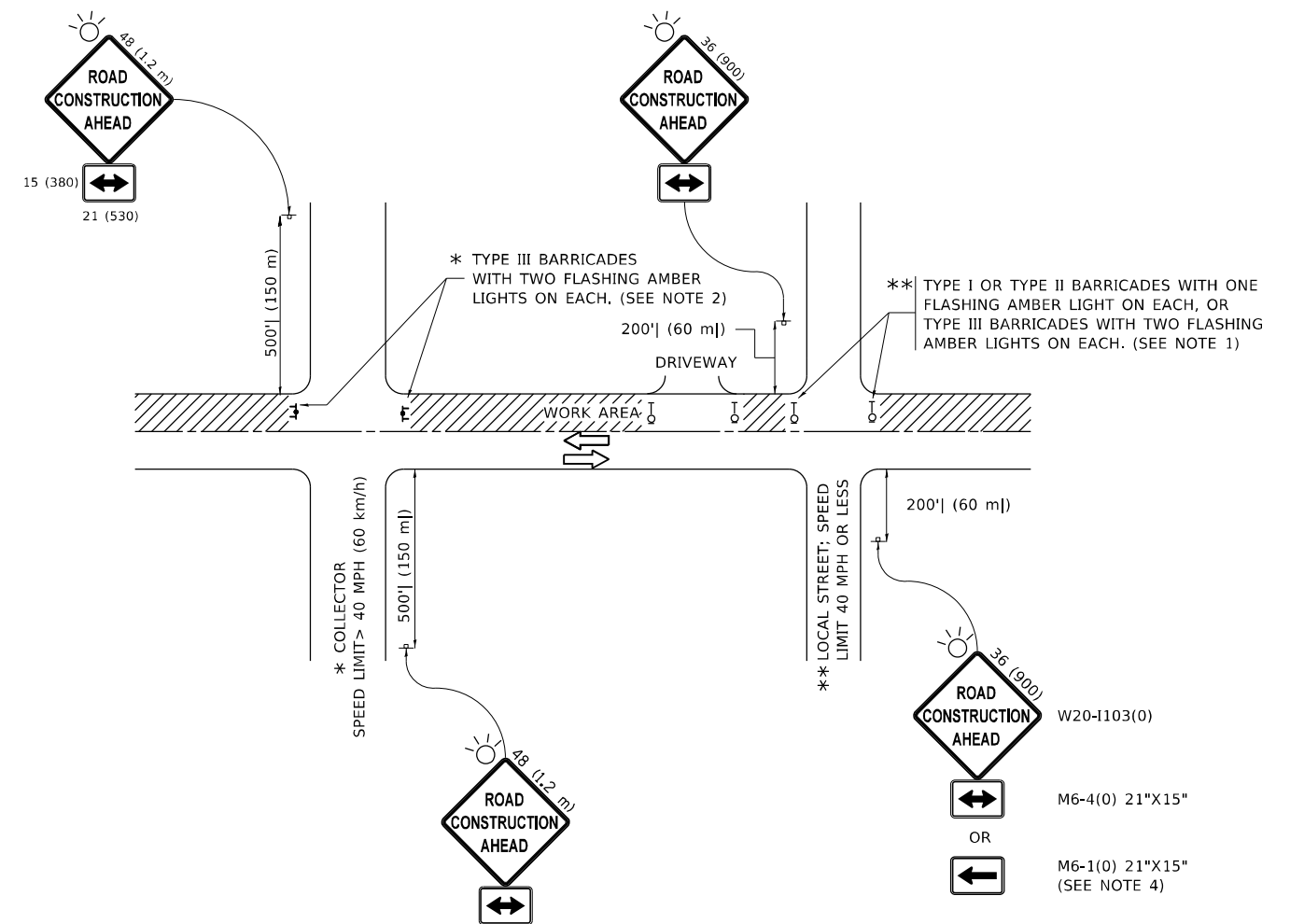
USER NAME = rothjp	DESIGNED - D.W.S.	REVISED - J.A.F. 02-06
	DRAWN -	REVISED - S.P.B. 01-07
PLOT SCALE = 100,0000' / in.	CHECKED -	REVISED - S.P.B. 12-09
PLOT DATE = 9/21/2021	DATE - 02-87	REVISED - M.D. 06-13

## STATE OF ILLINOIS DEPARTMENT OF TRANSPORTATION

## TRAFFIC CONTROL DETAILS FOR FREEWAY SINGLE & MULTI-LANE WEAVE

SCALE: NONE SHEET 1 OF 1 SHEETS STA. TO STA.

F.A.I. RTE.	SECTION	COUNTY	TOTAL SHEETS	SHEET NO.
90/94	2021-114-B-R	COOK	21	18a
TC-09		CONTRACT NO. 62P49		
ILLINOIS FED. AID PROJECT				



**NOTES:**

1. SIDE ROAD WITH A SPEED LIMIT OF 40 MPH (60 km/h) OR LESS AS SHOWN ON THE DRAWING AND AS DIRECTED BY THE ENGINEER:
  - a) ONE "ROAD CONSTRUCTION AHEAD" SIGN 36 x 36 (900x900) WITH A FLASHER MOUNTED ON IT APPROXIMATELY 200' (60 m) IN ADVANCE OF THE MAIN ROUTE.
  - b) THE CLOSED PORTION OF THE MAIN ROUTE SHALL BE PROTECTED BY BLOCKING WITH TYPE I, TYPE II OR TYPE III BARRICADES, 1/3 OF THE CROSS SECTION OF THE CLOSED PORTION.
2. SIDE ROAD WITH A SPEED LIMIT GREATER THAN 40 MPH (60 km/h) AS SHOWN ON THE DRAWING AND AS DIRECTED BY THE ENGINEER:
  - a) ONE "ROAD CONSTRUCTION AHEAD" SIGN 48 x 48 (1.2 m x 1.2 m) WITH A FLASHER MOUNTED ON IT APPROXIMATELY 500' (150 m) IN ADVANCE OF THE MAIN ROUTE.
  - b) BLOCKING WITH TYPE III BARRICADES, 1/2 OF THE CROSS SECTION OF THE CLOSED PORTION.
3. CONES MAY BE SUBSTITUTED FOR BARRICADES OR DRUMS AT HALF THE SPACING DURING DAY OPERATIONS. CONES SHALL BE A MINIMUM OF 28 (710) IN HEIGHT.
4. SIGNING AND THE WORK ZONE, A SINGLE HEADED ARROW (M6-1) SHALL BE USED IN LIEU OF THE DOUBLE HEADED ARROW (M6-4).
5. WHEN WORK IS BEING PERFORMED ON A SIDE ROAD OR DRIVEWAY, FOLLOW THE APPLICABLE STANDARD(S). THE DIRECTIONAL ARROW (M6-1 OR M6-4) SHALL BE COVERED OR REMOVED WHEN NO LONGER CONSISTENT WITH THE TRAFFIC CONTROL SET-UP.
6. ADVANCE WARNING SIGNS ARE TO BE OMITTED ON DRIVEWAYS UNLESS OTHERWISE SPECIFIED IN THE PLANS OR BY THE ENGINEER.
7. THE TRAFFIC CONTROL AND PROTECTION FOR SIDE ROADS, INTERSECTIONS, AND DRIVEWAYS SHALL BE INCLUDED IN THE COST OF SPECIFIED TRAFFIC CONTROL STANDARDS OR ITEMS.

All dimensions are in inches (millimeters) unless otherwise shown.

MODEL: Default  
 FILE NAME: p:\ultra-cw-beach\paw.com\PIV\DOT\Documents\DOT Office\District 11\Project\114 EB @ Dobson Rd\CADD\asst\Design\Traffic.dgn

USER NAME = rothjp	DESIGNED - L.H.A.	REVISED - A. HOUSEH 10-15-96
	DRAWN -	REVISED - T. RAMMACHER 01-06-00
PLOT SCALE = 100,0000' / in.	CHECKED -	REVISED - A. SCHUETZE 07-01-13
PLOT DATE = 8/20/2021	DATE - 06-89	REVISED - A. SCHUETZE 09-15-16

**STATE OF ILLINOIS  
DEPARTMENT OF TRANSPORTATION**

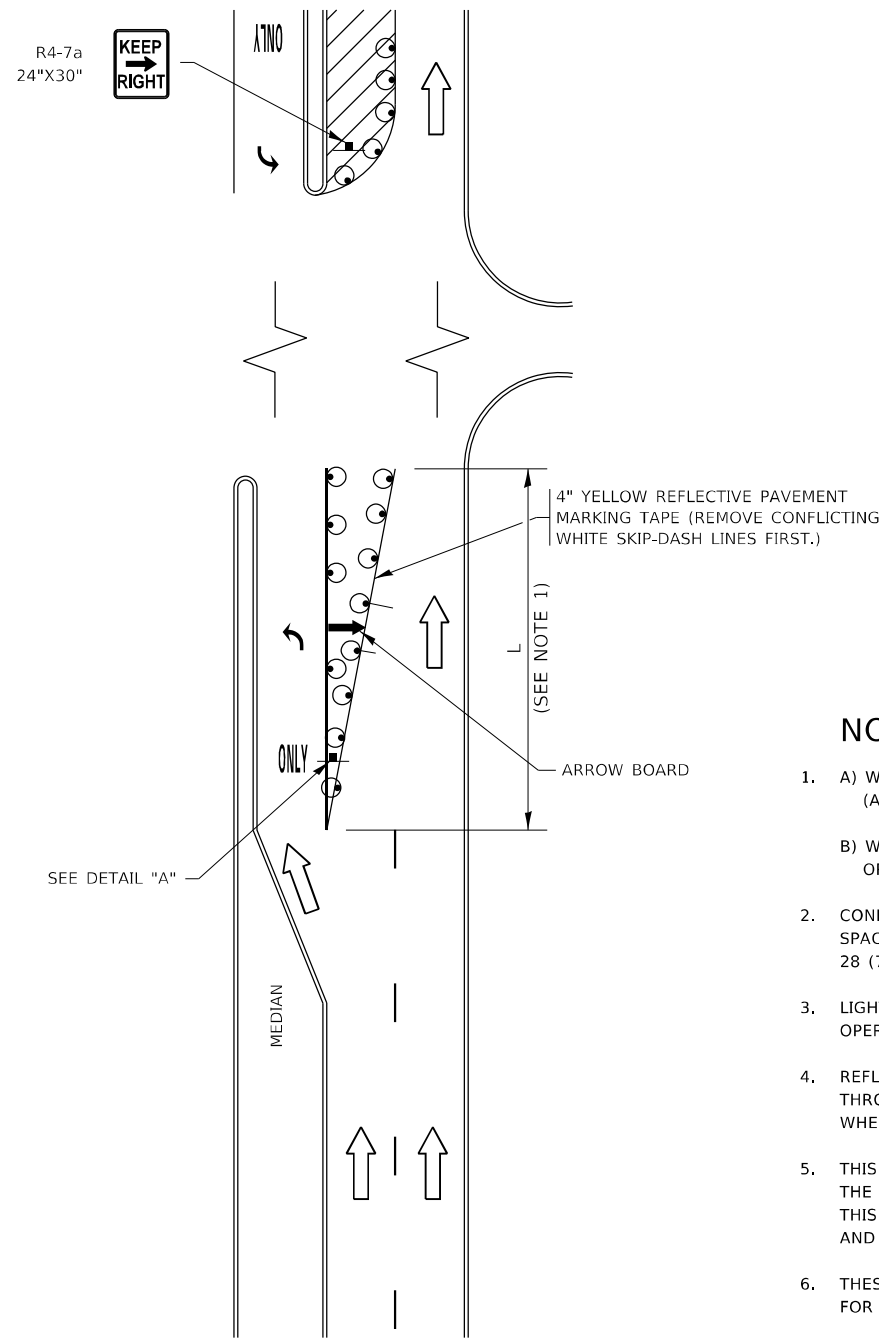
**TRAFFIC CONTROL AND PROTECTION FOR  
SIDE ROADS, INTERSECTIONS, AND DRIVEWAYS**

SCALE: NONE SHEET 1 OF 1 SHEETS STA. TO STA.

F.A.I. RTE.	SECTION	COUNTY	TOTAL SHEETS	SHEET NO.
90/94	2021-114-B-R	COOK	21	19
<b>TC-10</b>			CONTRACT NO. 62P49	
ILLINOIS FED. AID PROJECT				

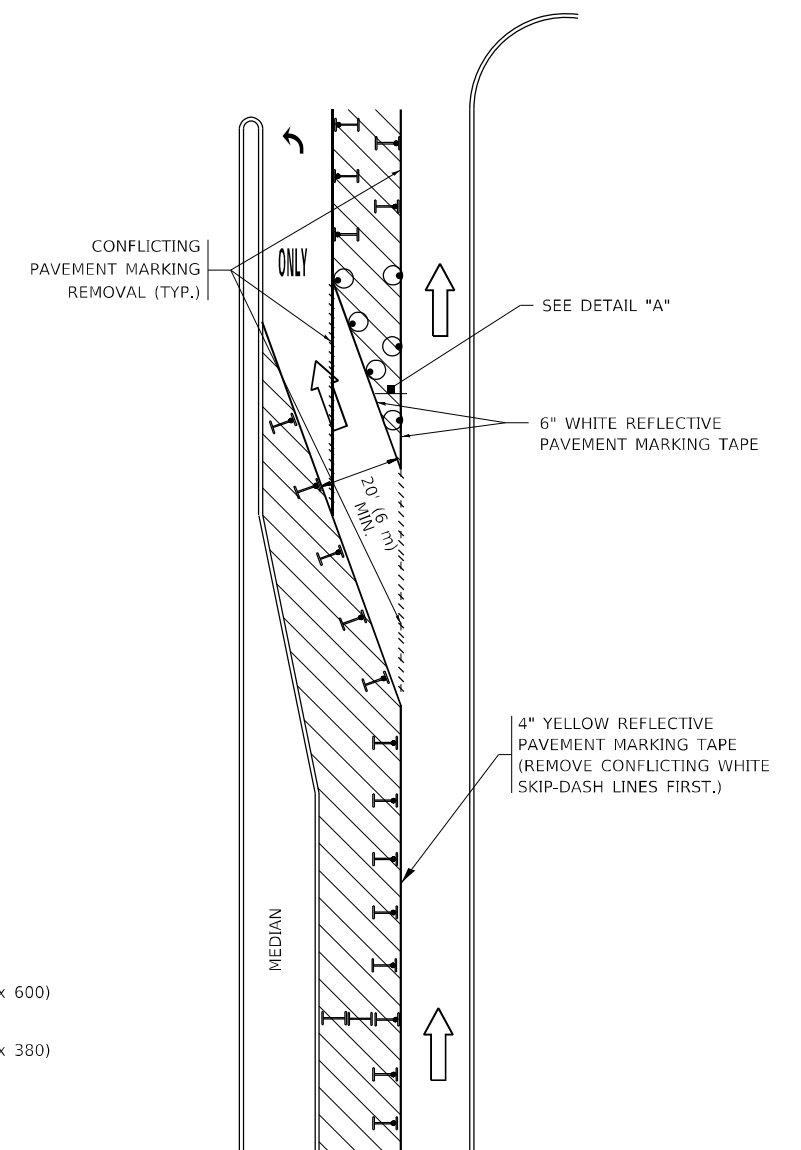


# TURN BAY ENTRANCE AT START OF LANE CLOSURE TAPER

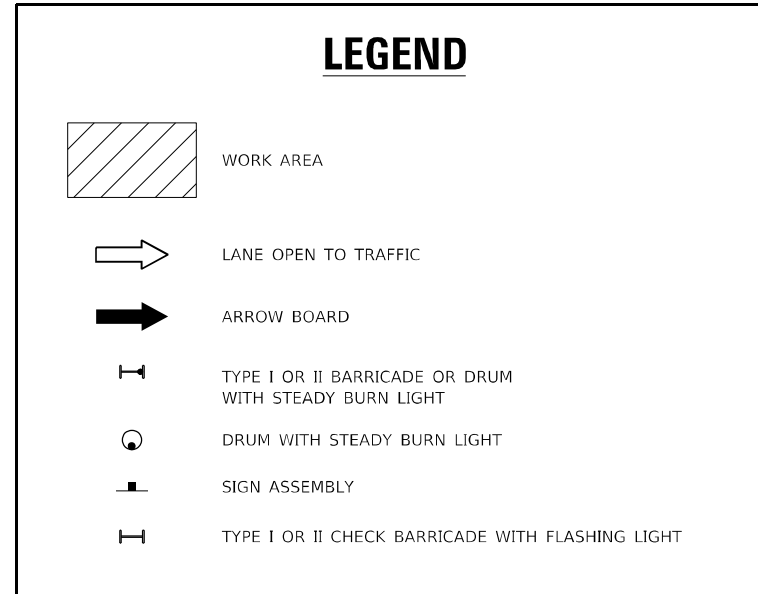


**FIGURE 1**

# TURN BAY ENTRANCE WITHIN A LANE CLOSURE

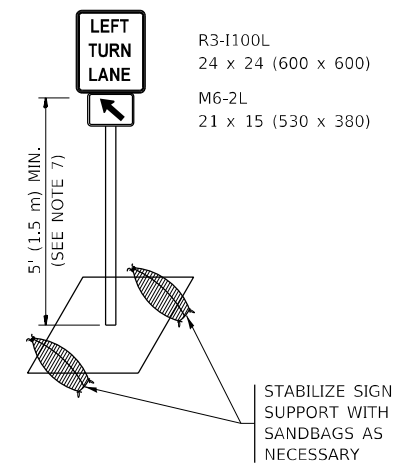


**FIGURE 2**



### NOTES:

1. A) WHEN "L" IS  $\leq$  THE STORAGE LENGTH OF THE TURN LANE (AS SHOWN IN FIG. 1), USE FIGURE 1.  
B) WHEN "L" IS  $>$  THE STORAGE LENGTH OF THE TURN LANE OR THE TURN LANE IS WITHIN THE LANE CLOSURE, USE FIGURE 2.
2. CONES MAY BE SUBSTITUTED FOR BARRICADES OR DRUMS AT HALF THE SPACING DURING DAY OPERATIONS. CONES SHALL BE A MINIMUM OF 28 (710) IN HEIGHT.
3. LIGHTS WILL NOT BE REQUIRED ON BARRICADES OR DRUMS FOR DAY OPERATIONS. ALL LIGHTS SHALL BE MONODIRECTIONAL.
4. REFLECTIVE TEMPORARY PAVEMENT MARKINGS SHALL BE PLACED THROUGHOUT THE BARRICADED AREAS OF EACH TURN BAY AS SHOWN WHERE THE CLOSURE TIME IS GREATER THAN FOURTEEN (14) DAYS.
5. THIS APPLICATION ALSO APPLIES WHEN WORK IS BEING PERFORMED IN THE RIGHT LANE(S) AND THE RIGHT TURN BAY IS TO REMAIN OPEN. UNDER THIS CONDITION, "RIGHT TURN LANE" R3-1100R 24 x 24 (600 x 600) AND M6-2R 21 x 15 (530 x 380) SHALL BE USED.
6. THESE CONTROLS SHALL SUPPLEMENT MAINLINE TRAFFIC CONTROL FOR LANE CLOSURES.
7. THE SIGNS SHALL BE MOUNTED ABOVE THE BARRICADES/DRUMS ON SEPARATE SIGN SUPPORTS THAT MEET NCHRP 350 OR MASH REQUIREMENTS.
8. TRAFFIC CONTROL AND PROTECTION AT TURN BAYS (TO REMAIN OPEN TO TRAFFIC) SHALL BE INCLUDED IN THE COST OF SPECIFIED TRAFFIC CONTROL STANDARDS OR ITEMS.



**DETAIL A**

All dimensions are in inches (millimeters) unless otherwise shown.

MODEL: Default FILE NAME: p:\project\aw\_beaufay.com\PIV\DOT\Documents\DOT Office\District 11\Project\11A\_EB @ Dobson\_R4\CAD\data\Design\Dist5Std.dgn

USER NAME = rothjp	DESIGNED - T. RAMMACHER 09-08-94	REVISED - R. BORO 09-14-09
	DRAWN - A. HOUSEH 11-07-95	REVISED - A. SCHUETZE 07-01-13
PLOT SCALE = 100,0000' / in.	CHECKED - A. HOUSEH 10-12-96	REVISED - A. SCHUETZE 09-15-16
PLOT DATE = 8/20/2021	DATE - T. RAMMACHER 01-06-00	REVISED -

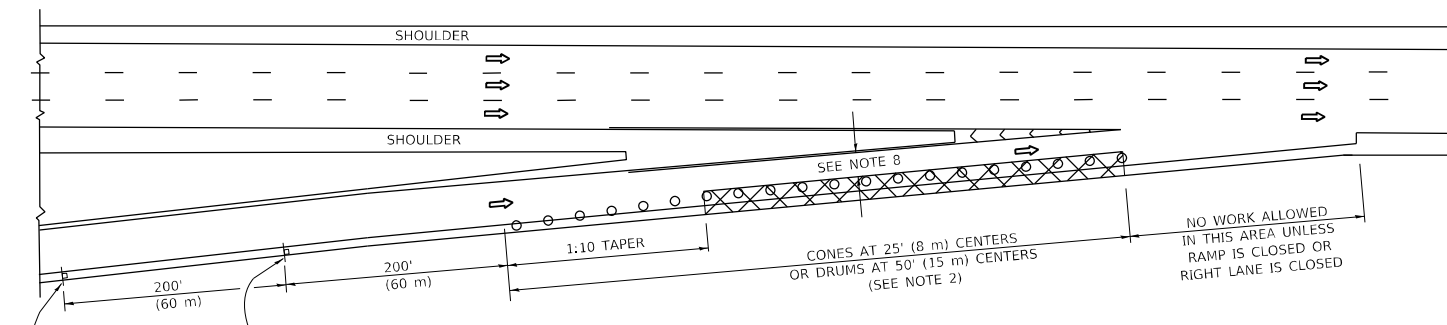
**STATE OF ILLINOIS  
DEPARTMENT OF TRANSPORTATION**

**TRAFFIC CONTROL AND PROTECTION AT TURN BAYS  
(TO REMAIN OPEN TO TRAFFIC)**

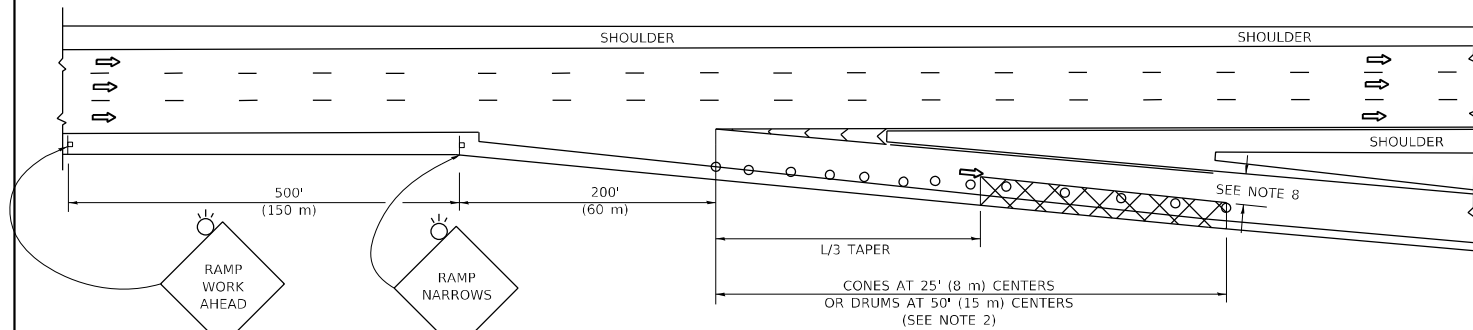
SCALE: NONE SHEET 1 OF 1 SHEETS STA. TO STA.

F.A.I. RTE.	SECTION	COUNTY	TOTAL SHEETS	SHEET NO.
90/94	2021-114-B-R	COOK	21	20
TC-14		CONTRACT NO. 62P49		
ILLINOIS FED. AID PROJECT				

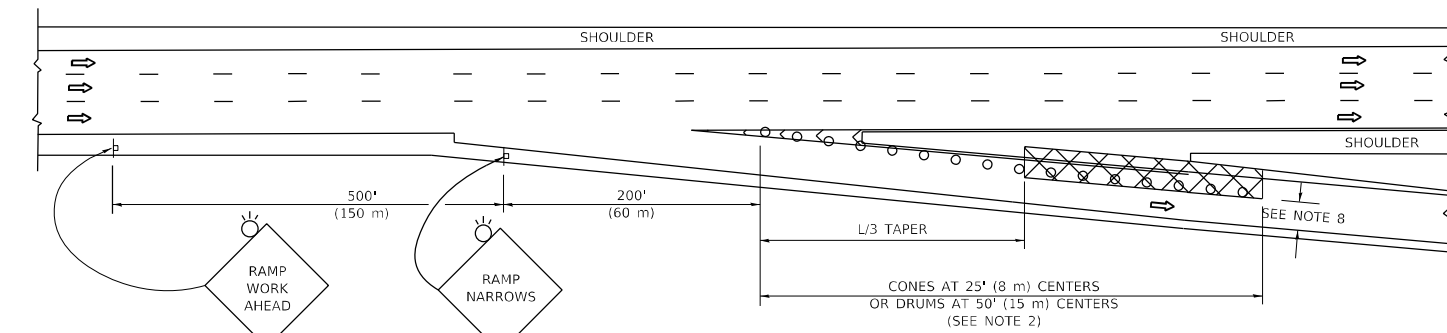
**PARTIAL RAMP CLOSURE DETAILS**



**TYPICAL ENTRANCE RAMP**



**TYPICAL EXIT RAMP**



**TYPICAL EXIT RAMP**

**SYMBOLS**

- ACTIVE WORK AREA
- SIGN ON PORTABLE OR PERMANENT SUPPORT
- FLAGGER WITH CONTROL SIGN
- TYPE II BARRICADE OR DRUM
- CONE, DRUM OR BARRICADE
- IMPACT ATTENUATOR OF TYPE AND TEST LEVEL SPECIFIED

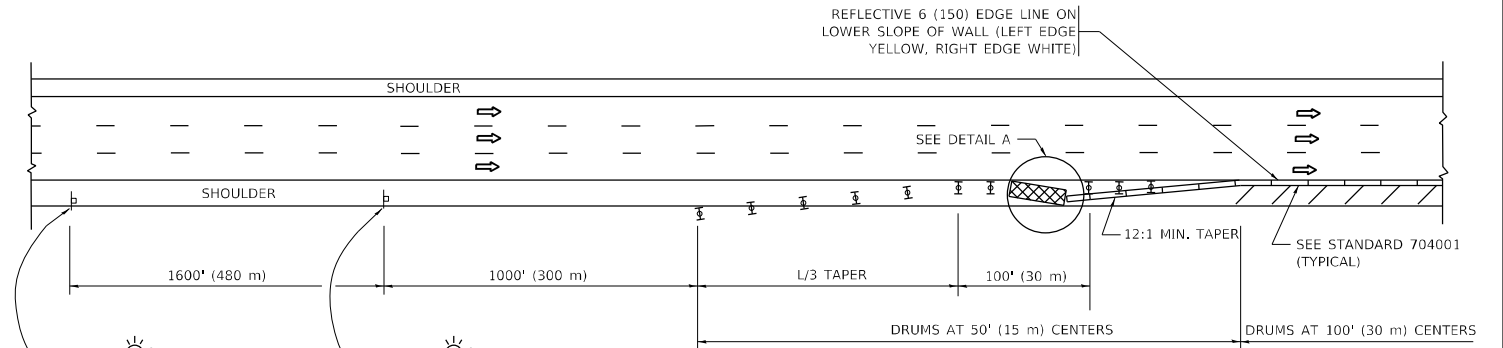
**GENERAL NOTES:**

- THE "L" DISTANCE EQUALS:  

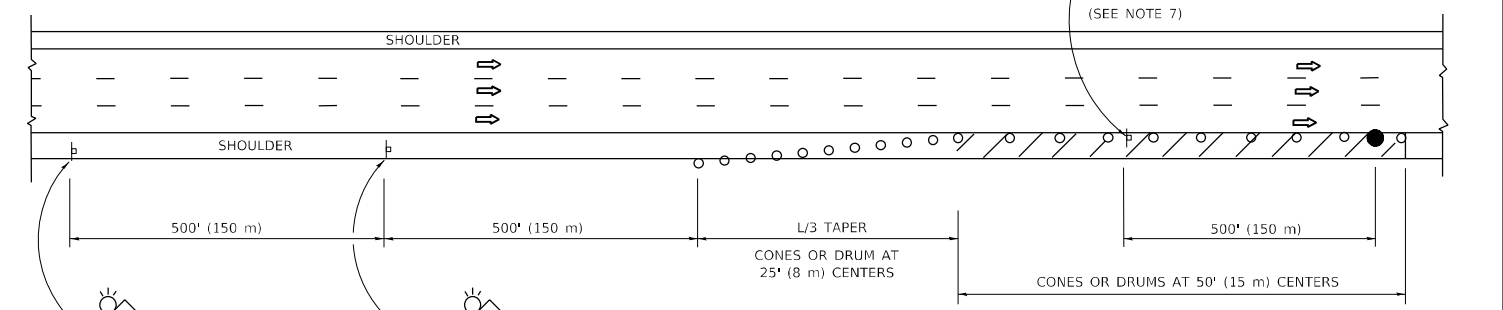
$L = \frac{W \cdot S}{S - V}$	<b>FORMULAS</b>
45 mph (80 km/h) OR GREATER:	METRIC ENGLISH
$L = 0.65(W/S)$	$L = (W/S)$

W = WIDTH OF OFFSET IN FEET (METERS)  
 S = NORMAL POSTED SPEED MPH (KM/H)
- TYPE II BARRICADES OR DRUMS ARE REQUIRED FOR ALL NIGHTTIME CLOSURES. TYPE II BARRICADES OR DRUMS WITH MONODIRECTIONAL STEADY BURN LIGHTS ARE REQUIRED FOR DELINEATING OBSTACLES, EXCAVATIONS, OR HAZARDS EXCEEDING 100 FT (30m) IN LENGTH AT NIGHT.
- ALL SIGNS SHALL BE POST MOUNTED IF THE CLOSURE TIME EXCEEDS FOUR DAYS.
- FLASHING LIGHTS SHALL BE USED DURING THE HOURS OF DARKNESS AND SHALL BE INSTALLED ABOVE THE FIRST TWO SETS OF SIGNS.

**SHOULDER CLOSURE DETAILS**

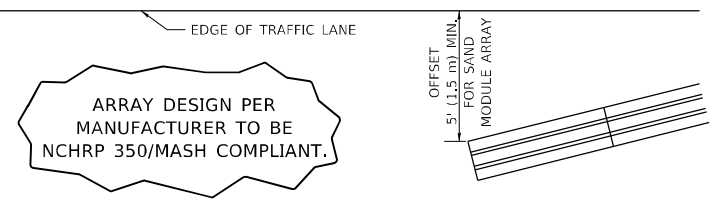


**PERMANENT SHOULDER CLOSURE**



**TEMPORARY SHOULDER CLOSURE**

THIS DETAIL IS USED WHERE:  
 1. VEHICLES, EQUIPMENT, WORKERS OR THEIR ACTIVITIES ENCR OACH IN AN AREA CLOSER THAN 15' (4.5 m) TO THE EDGE OF PAVEMENT FOR A PERIOD IN EXCESS OF 15 MINUTES.



**DETAIL "A"  
IMPACT ATTENUATOR, TEMPORARY  
(SEE NOTE 5)**

- THE IMPACT ATTENUATOR, TEMPORARY IS NOT REQUIRED WHEN THE TEMPORARY CONCRETE BARRIER WALL IS PROTECTED BY OR IS TIED INTO THE EXISTING GUARDRAIL. IF OFFSET IS LESS THAN 5 FEET USE NARROW USE TYPE DEVICE TO MEET NCHRP350/MASH.
- AUTHORIZATION FROM THE DISTRICT'S BUREAU OF TRAFFIC IS REQUIRED FOR ALL FREEWAY CLOSURES.
- THE FLAGGER AND FLAGGER SIGN ARE REQUIRED AT THE ABOVE WORK SITES WHEN:
  - FOUR OR MORE WORK VEHICLES ENTER THE TRAFFIC LANES IN A ONE HOUR PERIOD.
  - THE WORK AVTIVITY REQUIRES FREQUENT ENCR OACHMENT INTO THE LANE OPEN TO TRAFFIC.
 THE FLAGGER SHALL BE STATIONED APPROXIMATELY 100' (30 m) TO 200' (60 m) IN ADVANCE OF THE WORKERS.
- 12' MIN. WIDTH TANGENT SECTION  
16' MIN. WIDTH CURVE SECTION.
- TEMPORARY SHOULDER AND NON-SYSTEM INTERCHANGE PARTIAL RAMP CLOSURES ARE ALLOWED WEEKDAYS BETWEEN 9:00 A.M. AND 3:00 P.M. AND BETWEEN 7:00 P.M. AND 5:00 A.M. OR AS APPROVED BY THE EXPRESSWAY TRAFFIC OPERATIONS ENGINEER. PERMANENT SHOULDER AND PARTIAL RAMP CLOSURES WILL ONLY BE PERMITTED IF CALLED FOR IN THE PLANS OR AS APPROVED BY THE EXPRESSWAY OPERATIONS ENGINEER.

ALL DIMENSIONS ARE IN INCHES (MILLIMETERS) UNLESS OTHERWISE SHOWN.

MODEL: Default  
FILE NAME: \\pilot\dot\documents\DOT Office\Director: 11\projects\194 EB @ Dobson Rd\Cadd\Drawn\Drawn\Drawn.dwg

USER NAME = rothp	DESIGNED -	REVISED - S.P.B. 12-09
	DRAWN - D.W.S.	REVISED - M.D. 06-13
PLOT SCALE = 100,0000' / in.	CHECKED -	REVISED - M.D. 01-18
PLOT DATE = 8/20/2021	DATE - 11-96	REVISED - M.D. 10-20

**STATE OF ILLINOIS  
DEPARTMENT OF TRANSPORTATION**

**TRAFFIC CONTROL DETAILS FOR FREEWAY  
SHOULDER CLOSURES AND PARTIAL RAMP CLOSURES**

SCALE: NONE SHEET 1 OF 1 SHEETS STA. TO STA.

F.A.I. RTE. 90/94	SECTION 2021-114-B-R	COUNTY COOK	TOTAL SHEETS 21	SHEET NO. 21
TC-17		CONTRACT NO. 62P49		
ILLINOIS FED. AID PROJECT				