

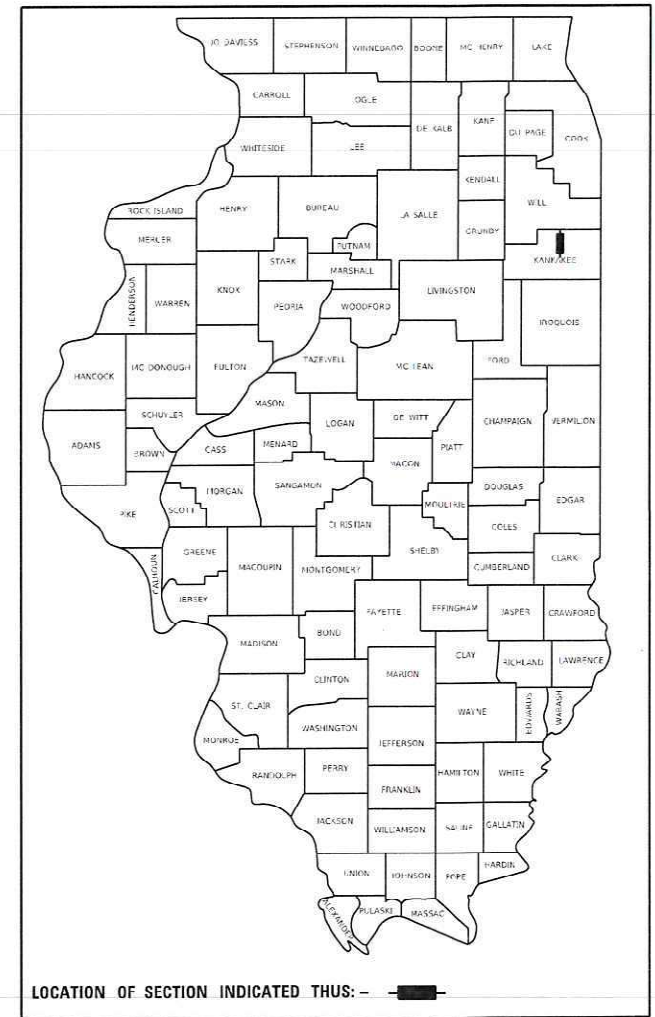
STATE OF ILLINOIS
DEPARTMENT OF TRANSPORTATION

F.A.P. RTE.	SECTION	COUNTY	TOTAL SHEETS	SHEET NO.
330	(16BR)BRR	KANKAKEE	11	1
		ILLINOIS	CONTRACT NO. 66F71	

D-93-007-22

PROPOSED HIGHWAY PLANS

FAP ROUTE 330 (US 45/52)
SECTION (16BR)BRR
PROJECT NHPP-WEJO(030)
BRIDGE REPAIRS
OVER SOUTH BRANCH ROCK CREEK
KANKAKEE COUNTY



LOCATION OF SECTION INDICATED THIS: -

INDEX OF SHEETS

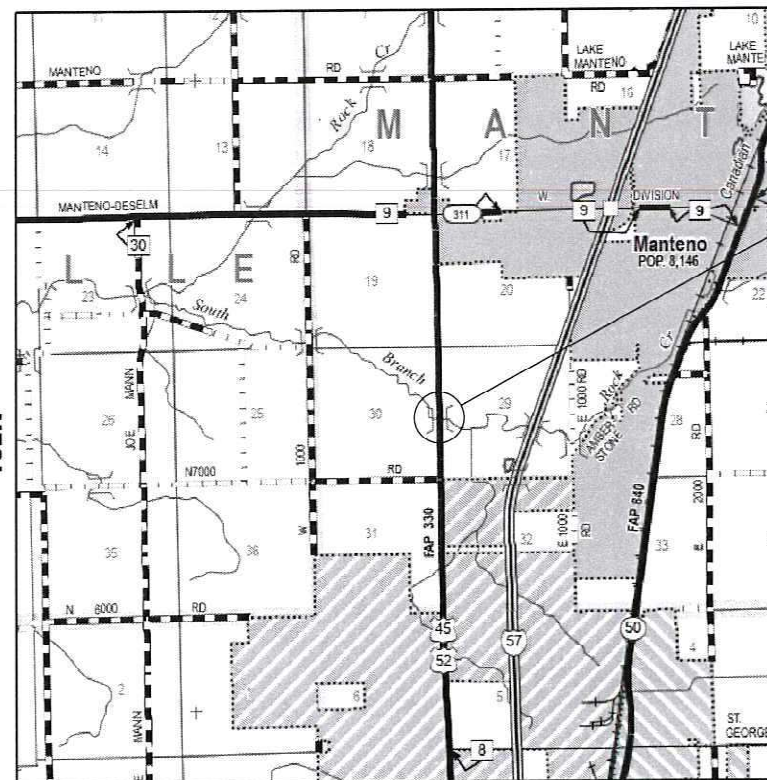
SHEET NO.	DESCRIPTION
1.	COVER SHEET
2.	GENERAL NOTES
3.-4.	SUMMARY OF QUANTITIES
5.	GENERAL PLAN AND ELEVATION
6.	PIER CAP REPAIR DETAILS
7.	BAR SPLICER ASSEMBLY AND MECHANICAL SPLICER DETAILS
8.	EXISTING ABUTMENTS
9.	EXISTING EXPANSION JOINTS
10.	CAUSEWAY/WORK PAD DRAWING
11.	TEMPORARY INFORMATION SIGNING

LIST OF ILLINOIS DOT HIGHWAY STANDARDS

STANDARD NO.	DESCRIPTION
000001-08	STANDARD SYMBOLS, ABBREVIATIONS, AND PATTERNS
001001-02	AREAS OF REINFORCEMENT BARS
701001-02	OFF-RD OPERATIONS, 2L, 2W, MORE THAN 15' (4.5 m) AWAY
701006-05	OFF-RD OPERATIONS, 2L, 2W, 15' (4.5 m) TO 24" (600 mm) FROM PAVEMENT EDGE
701201-05	LANE CLOSURE, 2L, 2W, DAY ONLY, FOR SPEEDS ≥ 45 MPH
701311-03	LANE CLOSURE 2L, 2W MOVING OPERATIONS-DAY ONLY
701321-18	LANE CLOSURE, 2L, 2W, BRIDGE REPAIR WITH BARRIER
701901-08	TRAFFIC CONTROL DEVICES
704001-08	TEMPORARY CONCRETE BARRIER
780001-05	TYPICAL PAVEMENT MARKINGS

C-93-022-22

R12E, 3RD PM



LOCATION MAP

TOWNSHIP: MANTENO

J.U.L.I.E.
JOINT UTILITY LOCATION INFORMATION FOR EXCAVATORS
1-800-892-0123
OR 811



ESCA PROJECT NO. 1321.09

PROJECT ENGINEER: BRAD DUNCAN, P.E.
UNIT CHIEF: DARCY CARPENTER

CONTRACT NO. 66F71

GROSS LENGTH = 116.54 FT. = 0.022 MILE
NET LENGTH = 116.54 FT. = 0.022 MILE



EXPIRES 11-30-21

Eric L. Henkel
SIGNATURE

08-10-21
DATE

FUNCTIONAL CLASSIFICATION: OTHER PRINCIPAL ARTERIAL
ADT: 6550 (2019), 14% TRUCKS

STATE OF ILLINOIS
DEPARTMENT OF TRANSPORTATION

SUBMITTED August 12, 2021

Tom Howard
REGIONAL ENGINEER

October 1, 2021
Stephen M. Smith
ENGINEER OF DESIGN AND SURVEILLANCE

October 2, 2021
Stephen M. Smith
DIRECTOR OF HIGHWAYS PROJECT IMPLEMENTATION

PRINTED BY THE AUTHORITY
OF THE STATE OF ILLINOIS

GENERAL NOTES

1. IN ADDITION TO THE REQUIREMENTS OF ARTICLE 107.16, THE CONTRACTOR SHALL PROTECT THE SURFACE OF ALL BRIDGE DECKS AND BRIDGE APPROACH PAVEMENTS IN A MANNER SATISFACTORY TO THE ENGINEER BEFORE ANY EQUIPMENT IS ALLOWED TO CROSS THE STRUCTURE. PROTECTION SHALL BE PROVIDED FOR ALL EQUIPMENT AS DEFINED IN ARTICLE 101.17 REGARDLESS IF TRACK MOUNTED OR WHEELED.
2. IN USING HIGHWAY STANDARD 701321, THE STOP BAR NORTH OF THE BRIDGE SHALL BE PLACED JUST NORTH OF THE TWO FIELD ENTRANCES. BOTH FIELD ENTRANCES SHALL REMAIN OPEN DURING CONSTRUCTION. SIGNAL HEADS ARE NOT REQUIRED AT FIELD ENTRANCES. A NO RIGHT TURN SIGN (R3-1-2424) SHALL BE PLACED AT THE WEST FIELD ENTRANCE AND A NO LEFT TURN SIGN (R3-2-2424) SHALL BE PLACED AT THE EAST FIELD ENTRANCE TO PROHIBIT TURNING MOVEMENTS FROM THE ENTRANCES ONTO US 45/52 TOWARD THE BRIDGE WHILE THIS STANDARD IS BEING USED. COST IS INCLUDED IN TRAFFIC CONTROL AND PROTECTION, STANDARD 701321.
3. COMMITMENTS: NONE

STATE OF ILLINOIS
DEPARTMENT OF TRANSPORTATION
DISTRICT THREE
AS BUILT INFORMATION

STATE OF ILLINOIS
DEPARTMENT OF TRANSPORTATION
DISTRICT THREE

SUPERVISING CONSTRUCTION FIELD ENGINEER

PREPARED BY: _____
DISTRICT STUDIES & PLANS ENGINEER

RESIDENT ENGINEER / TECHNICIAN

DATE: _____

START & END DATES
OF CONSTRUCTION: _____

EXAMINED BY: _____
DISTRICT CONSTRUCTION ENGINEER

INSPECTORS: _____

DISTRICT MATERIALS ENGINEER

DISTRICT OPERATIONS ENGINEER

**STATE OF ILLINOIS
DEPARTMENT OF TRANSPORTATION**

GENERAL NOTES

SCALE: NA SHEET 1 OF 1 SHEETS STA. TO STA.

F.A.P. RTE.	SECTION	COUNTY	TOTAL SHEETS	SHEET NO.
330	(16BR)BRR	KANKAKEE	11	2
CONTRACT NO. 66F71				
ILLINOIS		FED. AID PROJECT		



USER NAME = nhc	DESIGNED - ELH	REVISED -
ESCA PROJECT NO. 1321.09	DRAWN - NHC	REVISED -
PLOT SCALE = 0.1667' / in.	CHECKED - ELH	REVISED -
PLOT DATE = 8/10/2021	DATE - 07/21	REVISED -

MODEL_PLOT
FILE NAME: Y:\PROJECTS\1321.09_66F71\CADD\Highway\CADD_Sheets\0366F71_sht-02mm0601.dgn

SUMMARY OF QUANTITIES

CODE NO.	ITEM	UNIT	80% FED
			20% STATE
			BRIDGE
			0013
			S.N. 046-0047
50300225	CONCRETE STRUCTURES	CU YD	8.0
50800205	REINFORCEMENT BARS, EPOXY COATED	POUND	1050
50800515	BAR SPLICERS	EACH	12
52000005	PREFORMED JOINT SEAL 1"	FOOT	81
67100100	MOBILIZATION	L SUM	1
70100405	TRAFFIC CONTROL AND PROTECTION, STANDARD 701321	EACH	1
70100450	TRAFFIC CONTROL AND PROTECTION, STANDARD 701201	L SUM	1
70106500	TEMPORARY BRIDGE TRAFFIC SIGNALS	EACH	1
70107025	CHANGEABLE MESSAGE SIGN	CAL DA	28
70300100	SHORT TERM PAVEMENT MARKING	FOOT	100
70300150	SHORT TERM PAVEMENT MARKING REMOVAL	SQ FT	34
70400100	TEMPORARY CONCRETE BARRIER	FOOT	350
70400200	RELOCATE TEMPORARY CONCRETE BARRIER	FOOT	350
70600250	IMPACT ATTENUATORS, TEMPORARY (NON- REDIRECTIVE), TEST LEVEL 3	EACH	2
70600350	IMPACT ATTENUATORS, RELOCATE (NON- REDIRECTIVE), TEST LEVEL 3	EACH	2
* 78001110	PAINT PAVEMENT MARKING - LINE 4"	FOOT	1520

*= SPECIALTY ITEM

MODEL: PLOT
FILE NAME: Y:\JUDOT1321-09_66F71\CADD\Highway\CADD_Sheets\0366F71.sft-SQ001.dgn



USER NAME = nhc	DESIGNED - ELH	REVISED -
ESCA PROJECT NO. 1321.09	DRAWN - NHC	REVISED -
PLOT SCALE = 0.1667' / in.	CHECKED - ELH	REVISED -
PLOT DATE = 8/10/2021	DATE - 07/21	REVISED -

**STATE OF ILLINOIS
DEPARTMENT OF TRANSPORTATION**

SUMMARY OF QUANTITIES

SCALE: NA SHEET 1 OF 2 SHEETS STA. TO STA.

F.A.P. RTE.	SECTION	COUNTY	TOTAL SHEETS	SHEET NO.
330	(16BR)BRR	KANKAKEE	11	3
			CONTRACT NO. 66F71	
ILLINOIS FED. AID PROJECT				

EXISTING STRUCTURE:

SN 046-0047 was constructed in 1967 as FA-45, Section 16-BR. The bridge had a PPC deck beam superstructure on concrete piers and abutments on spread footings. In 2005, the three-span structure was rehabilitated as FAP 330, Section 16BR. The superstructure was replaced with PPC deck beams with a concrete wearing surface, and the abutments and piers were repaired. The existing bridge is 116'-6 1/2" long back-to-back of abutments and 40'-0" wide out-to-out of superstructure.

The bearing seats shall be restored and the pier caps widened at both piers. The abutments and expansion joints shall be repaired. Traffic to be maintained utilizing stage construction.

PIER REPAIR SCOPE OF WORK

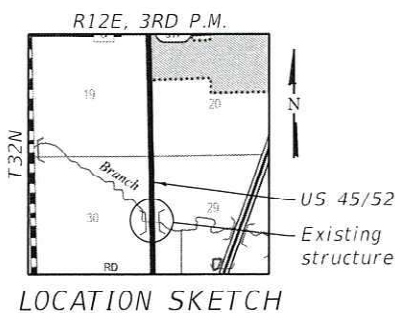
1. Setup TC&P 701321 to shift traffic to the NB lane of US 45/52.
2. Perform cap repair at Pier 1 and Pier 2 under SB lane.
3. Adjust TC&P 701321 to shift traffic to the SB lane of US 45/52.
4. Perform cap repair at Pier 1 and Pier 2 under NB lane.
5. Remove TC&P 701321 and restore two-lane, two-way traffic.

GENERAL NOTES

1. Reinforcement bars designated (E) shall be epoxy coated.
2. Plan dimensions and details relative to existing plans are subject to nominal construction variations. The Contractor shall field verify existing dimensions and details affecting new construction and make necessary approved adjustments prior to construction or ordering of materials. Such variations shall not be cause for additional compensation for a change in scope of work; however, the Contractor will be paid for the quantity actually furnished at the unit price bid for the work.
3. Existing reinforcement bars extending into the removal area shall be cleaned, straightened and incorporated into the new construction. Any reinforcement bars that are damaged during concrete removal operations shall be replaced using an approved bar splicer or anchorage system. Cost included in Concrete Structures.
4. The quantity of Concrete Structures includes an estimated quantity to replace spalled areas and loose or delaminated areas that are removed from the existing piers. The limits of concrete removal will be determined in the field by the Engineer, except in no case shall the removal go deeper than six inches. The Contractor shall use extreme care during concrete removal so as not to damage the PPC deck beams. The cost of concrete removal is included in Concrete Structures.
5. Self-consolidating Class SI concrete shall be used at the pier caps.
6. The proposed reinforcement and threaded bars have been located to clear existing reinforcement and dowel rods based on the information provided on existing bridge plans. Small location adjustments may be made as approved by the Engineer; however, adjustments may lead to other conflicts since the piers contain dowel rods from multiple deck beam superstructures.
7. Concrete removal shall not begin until after traffic has been shifted to the opposite side of the bridge. Stage I traffic control shall remain in place until the Stage I concrete has cured and Stage I channels have been installed. Stage II traffic control shall remain in place until the Stage II concrete has cured and Stage II channels have been installed. The Contractor shall coordinate the work to avoid placing heavy construction loads on PPC deck beams with reduced support at the piers.
8. Structural Repair of Concrete (Depth Equal To Or Less Than 5 Inches) shall be used to repair the abutments as determined in the field by the Engineer.
9. The gland component in the preformed joint seal expansion joint at each abutment shall be replaced. Paid for as Preformed Joint Seal 1".

TOTAL BILL OF MATERIAL

ITEM	UNIT	TOTAL
Concrete Structures	Cu. Yd.	8.0
Reinforcement Bars, Epoxy Coated	Pound	1050
Bar Splicers	Each	12
Structural Steel Repair	Pound	2460
Structural Repair of Concrete (Depth Equal To Or Less Than 5 Inches)	Sq. Ft.	45
Preformed Joint Seal 1"	Foot	81



EXPIRES 11-30-22
 SIGNATURE
 09-22-21
 DATE

DESIGN STRESSES

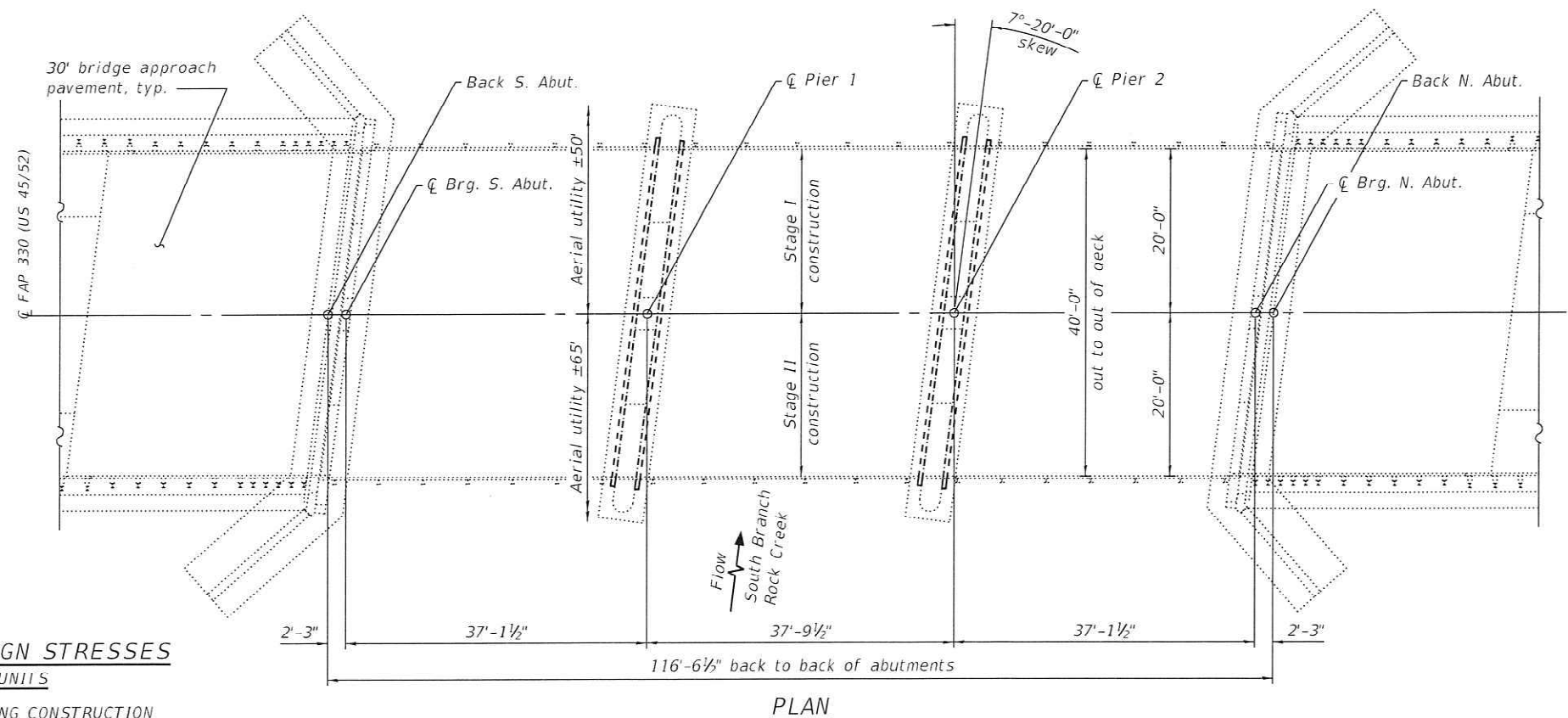
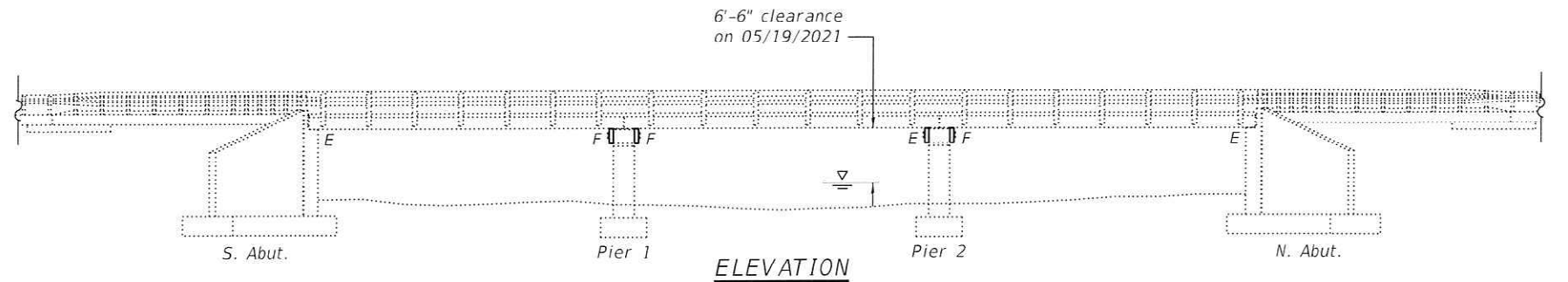
FIELD UNITS

EXISTING CONSTRUCTION

$f_c = 1,000$ psi (substructure)
 $f_s = 20,000$ psi (reinforcement)

NEW CONSTRUCTION

$f_c = 3,500$ psi (substructure)
 $f_y = 60,000$ psi (reinforcement)
 $f_y = 50,000$ psi (AASHTO M270 Grade 50)
 $f_y = 105,000$ psi (ASTM F1554 threaded bar)



GENERAL PLAN & ELEVATION
US 45/52 OVER SOUTH BRANCH ROCK CREEK
F.A.P. ROUTE 330 - SECTION (16BR)BRR
KANKAKEE COUNTY
STATION 356+17.50
STRUCTURE NO. 046-0047

MODEL: PLO1
 FILE NAME: Y:\DOT\1321-09_66F71\CADD\SP SN 046-0047\0460047-66F71-01-GenPlan.dgn
 9/22/2021 3:35:48 PM

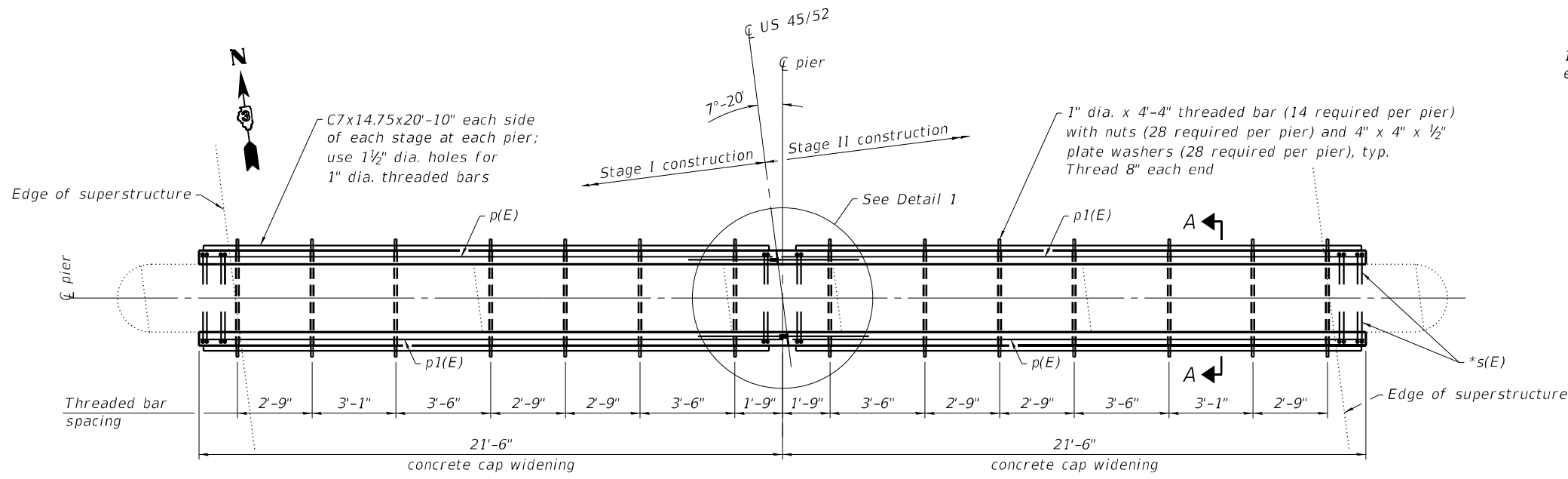


USER NAME = ivk	DESIGNED - ELH 07/21	REVISD -
ESCA PROJECT NO. 1321.09	CHECKED - RDP 07/21	REVISD -
PLOT SCALE = 0.2" = 1'-0"	DRAWN - NHC 09/21	REVISD -
PLOT DATE = 9/22/2021	CHECKED - ELH 09/21	REVISD -

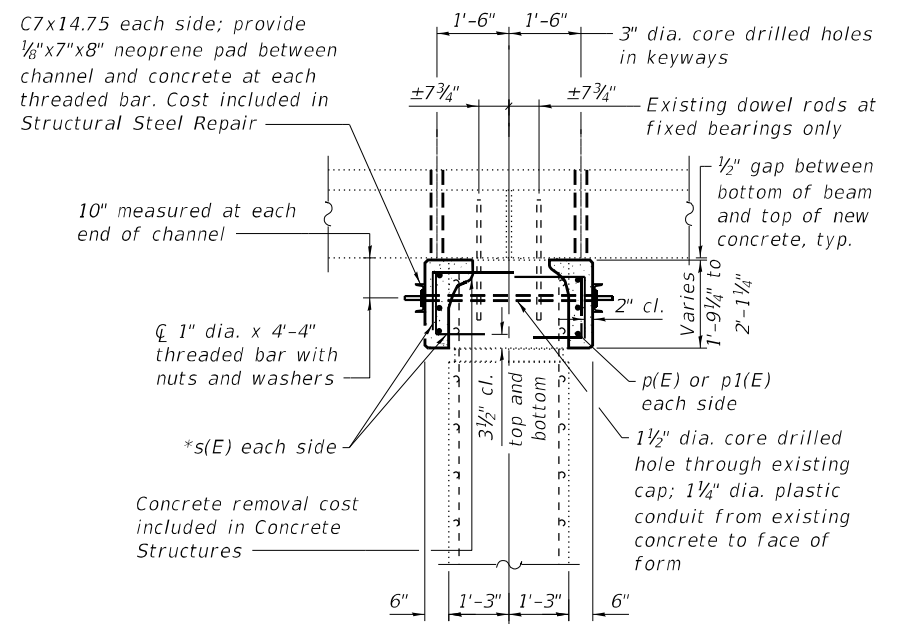
STATE OF ILLINOIS
DEPARTMENT OF TRANSPORTATION

SHEET 1 OF 3 SHEETS

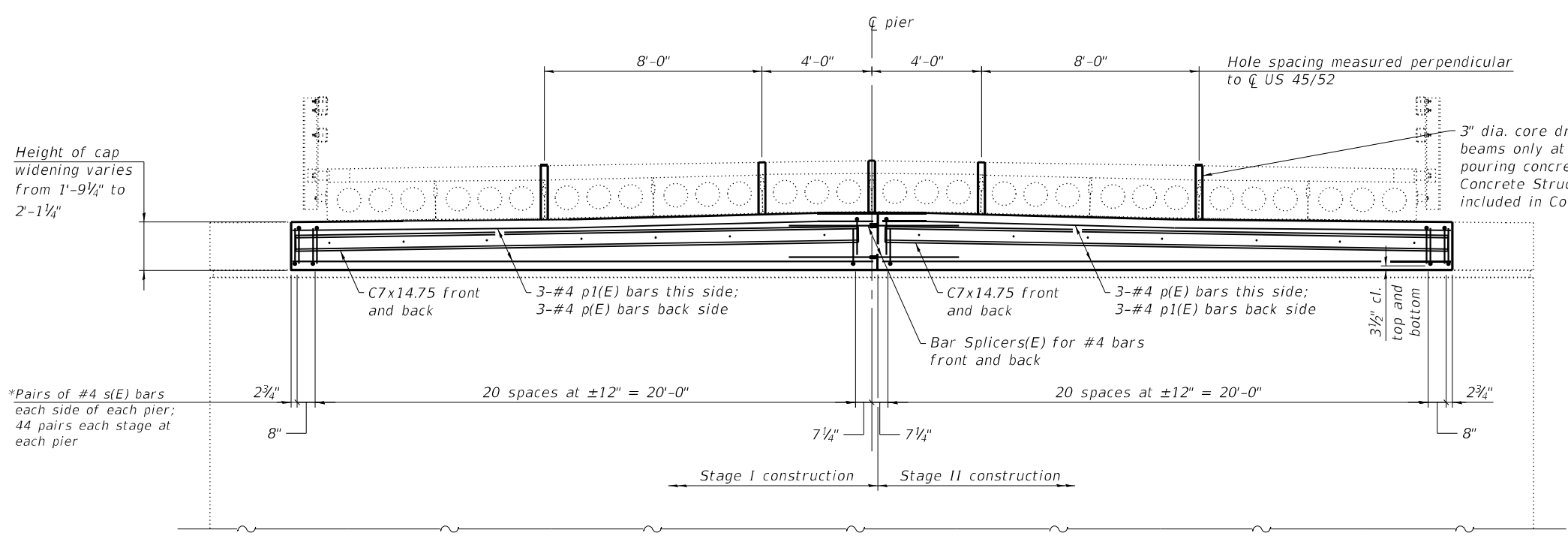
F.A.P. RTE. 330	SECTION (16BR)BRR	COUNTY KANKAKEE	TOTAL SHEETS 11	SHEET NO. 5
CONTRACT NO. 66F71				
ILLINOIS FED. AID PROJECT				



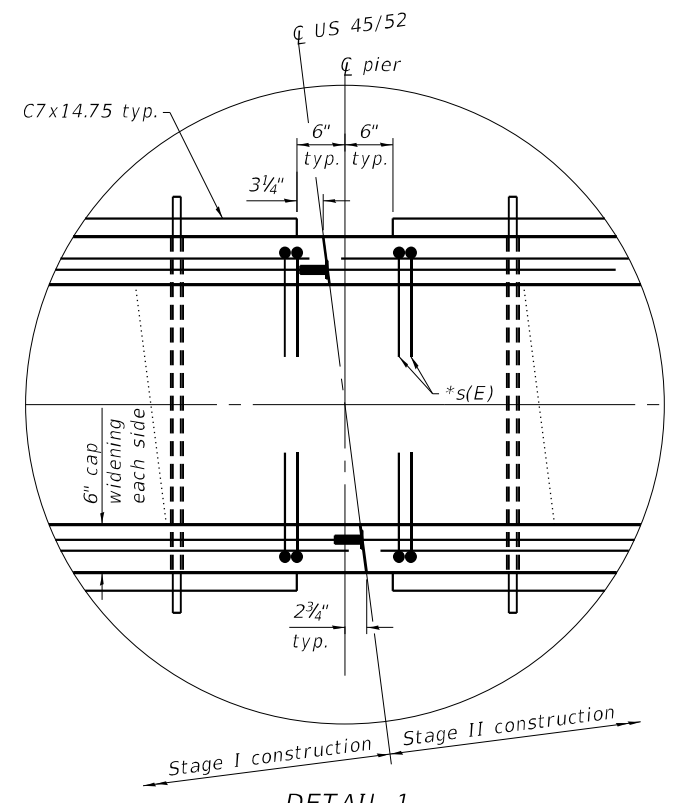
PIER CAP PLAN



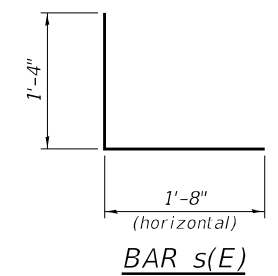
SECTION A-A



ELEVATION
(Looking North)



DETAIL 1



REBAR LIST (TWO PIERS)

Bar	No.	Size	Length	Shape
p(E)	12	#4	21'-0"	—
p1(E)	12	#4	21'-5"	—
s(E)	352	#4	3'-0"	L

* Drill and epoxy grout 9" into existing cap according to Article 584 of the Standard Specifications. Trim legs to maintain minimum clearance. Cost included with Reinforcement Bars, Epoxy Coated.

MODEL: PLOT FILE NAME: Y:\IDOT\1321-09_66F71\CADD\SP_SN_046-0047\0460047-66F71-02-PierCapRepair.dgn



USER NAME = nhc
ESCA PROJECT NO. 1321.09
PLOT SCALE = 0.2" = 1' / in.
PLOT DATE = 8/10/2021

DESIGNED - ELH 07/21
CHECKED - RDP 07/21
DRAWN - NHC 07/21
CHECKED - RDP 07/21

REVISED -
REVISED -
REVISED -
REVISED -

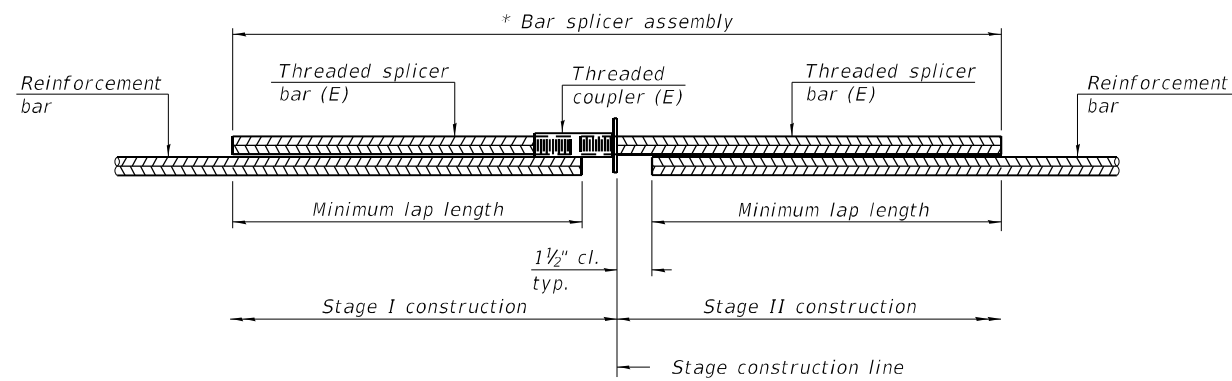
**STATE OF ILLINOIS
DEPARTMENT OF TRANSPORTATION**

**PIER CAP REPAIR DETAILS
STRUCTURE NO. 046-0047**

SHEET 2 OF 3 SHEETS

F.A.P. RTE.	SECTION	COUNTY	TOTAL SHEETS	SHEET NO.
330	(16BR)BRR	KANKAKEE	11	6

CONTRACT NO. 66F71
ILLINOIS FED. AID PROJECT

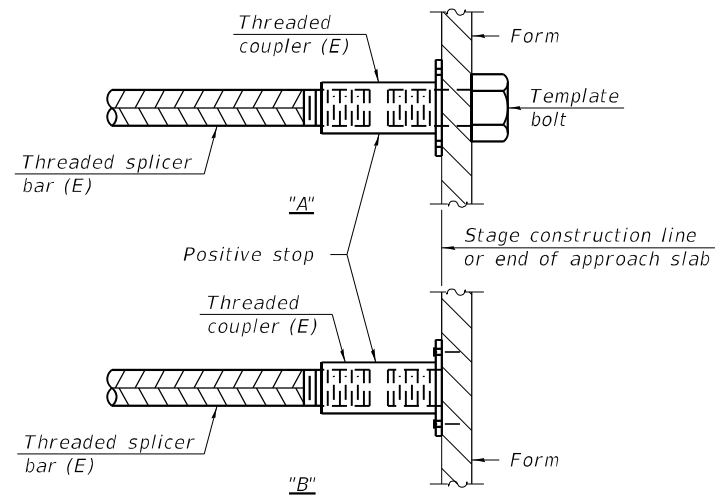


STANDARD BAR SPLICER ASSEMBLY PLAN
 (All components shall be provided from one supplier)

Threaded splicer bar length = min. lap length + 1 1/2" + thread length

* Epoxy not required on Bar Splicer Assembly components used in conjunction with black bars.

Location	Bar size	No. assemblies required	Minimum lap length
pier caps	#4	12	2'-11"

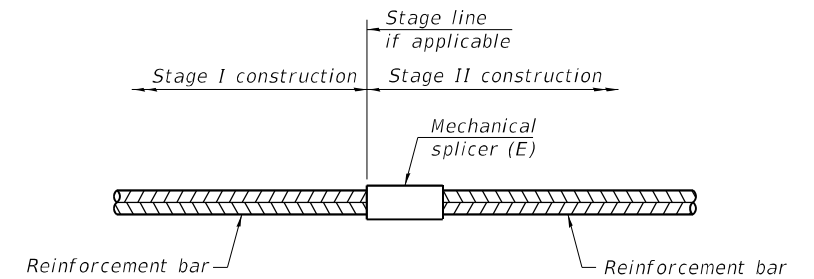


INSTALLATION AND SETTING METHODS

"A" : Set bar splicer assembly by means of a template bolt.

"B" : Set bar splicer assembly by nailing to wood forms or cementing to steel forms.

(E) : Indicates epoxy coating.



STANDARD MECHANICAL SPLICER

Location	Bar size	No. assemblies required
NA		

Notes:

Splicer bars shall be deformed with threaded ends and have a minimum 60 ksi yield strength.

All reinforcement shall be lapped and tied to the splicer bars.

Bar splicer assemblies shall be epoxy coated according to the requirements for reinforcement bars. See Section 508 of the Standard Specifications.

See approved list of bar splicer assemblies and mechanical splicers for alternatives.

MODEL: PLOT
 FILE NAME: Y:\IDOT\1321-09_66F71\CADD\SP_SN_046-0047\0460047-66F71-03-SplicerDetails.dgn
 8/10/2021 4:35:41 PM

BSD-1

1-1-2020



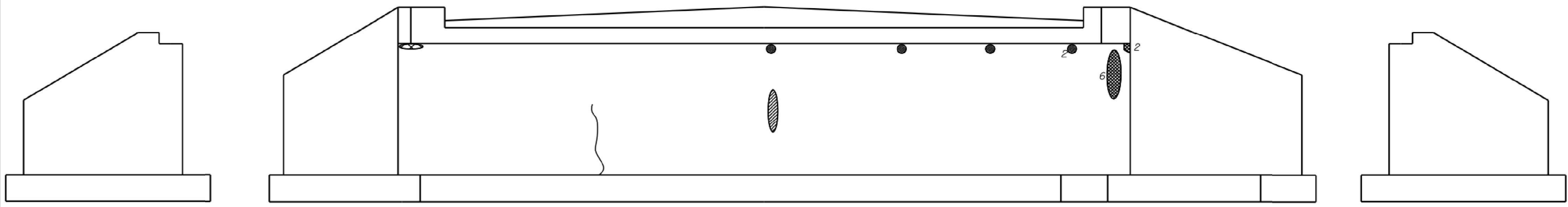
USER NAME = nhc	DESIGNED - ELH	05/21	REVISED -
ESCA PROJECT NO. 1321.09	CHECKED - RDP	05/21	REVISED -
PLOT SCALE = 0:2" = 1" / in.	DRAWN - NHC	05/21	REVISED -
PLOT DATE = 8/10/2021	CHECKED - RDP	05/21	REVISED -

**STATE OF ILLINOIS
 DEPARTMENT OF TRANSPORTATION**

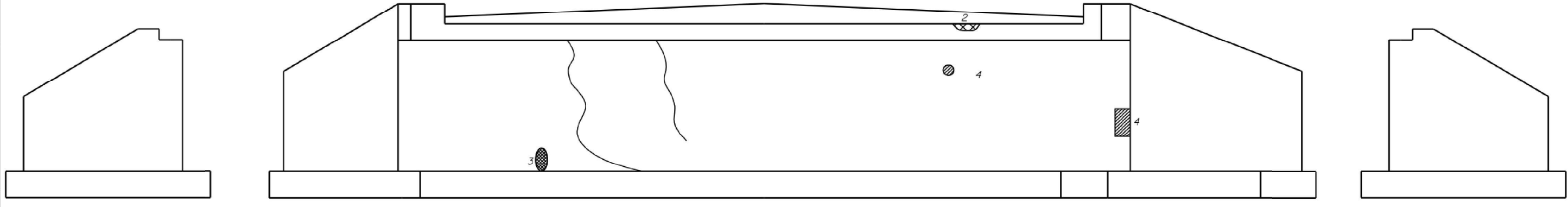
**BAR SPLICER ASSEMBLY AND MECHANICAL SPLICER DETAILS
 STRUCTURE NO. 046-0047**

SHEET 3 OF 3 SHEETS





F.A.P. RTE.	SECTION	COUNTY	TOTAL SHEETS	SHEET NO.
330	(16BR)BRR	KANKAKEE	11	7
			CONTRACT NO. 66F71	
		ILLINOIS	FED. AID PROJECT	



SOUTH ABUTMENT
Looking South



NORTH ABUTMENT
Looking North

- LEGEND**
-  RUST
 -  DELAMINATION/SPALLING
 -  CRACK
 -  LEACHING

6/7/2017
 FILE NAME: Y:\PROJECTS\1321-09-66F71\ROAD\Highway\CADD_Sheets\046-0047_Feild.dwg



USER NAME =	DESIGNED -	REVISIED -
CHECKED -	REVISIED -	
PLOT SCALE =	DRAWN -	REVISIED -
PLOT DATE =	CHECKED -	REVISIED -

STATE OF ILLINOIS
DEPARTMENT OF TRANSPORTATION

EXISTING ABUTMENTS 046-0047
US 4552 OVER S BRANCH ROCK CREEK

F.A.P. RTE.	SECTION	COUNTY	TOTAL SHEETS	SHEET NO.
330	16-BR	KANKAKEE		
CONTRACT NO. 66F71				
ILLINOIS FED. AID PROJECT				



USER NAME = nhc	DESIGNED - ELH	REVISIED -
ESCA PROJECT NO. 1321.09	DRAWN - NHC	REVISIED -
PLOT SCALE = 0.1667' / in.	CHECKED - ELH	REVISIED -
PLOT DATE = 8/10/2021	DATE - 07/21	REVISIED -

STATE OF ILLINOIS
DEPARTMENT OF TRANSPORTATION

EXISTING ABUTMENTS - FOR INFORMATION ONLY
STRUCTURE NO. 046-0047

SCALE: NA SHEET 1 OF 1 SHEETS STA. TO STA.

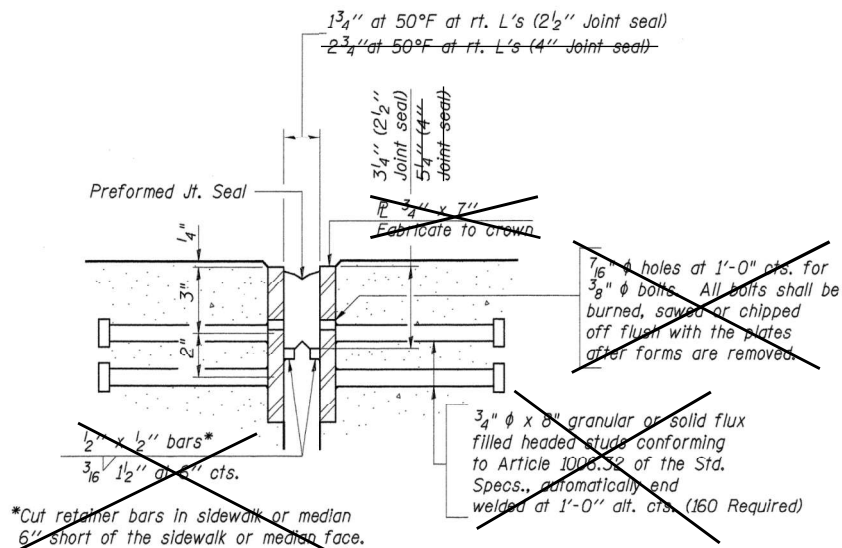
F.A.P. RTE.	SECTION	COUNTY	TOTAL SHEETS	SHEET NO.
330	(16BR)BRR	KANKAKEE	11	8
CONTRACT NO. 66F71				
ILLINOIS FED. AID PROJECT				

MODEL_PLOT
 FILE NAME: Y:\PROJECTS\1321-09-66F71\ROAD\Highway\CADD_Sheets\046-0047_Feild.dwg

STATE OF ILLINOIS
DEPARTMENT OF TRANSPORTATION

ROUTE NO.	SECTION	COUNTY	TOTAL SHEETS	SHEET NO.
F.A.P. 330	16BR	KANKAKEE	37	25

ILLINOIS
CONTRACT NO. 66365
Sheet 8 of 18

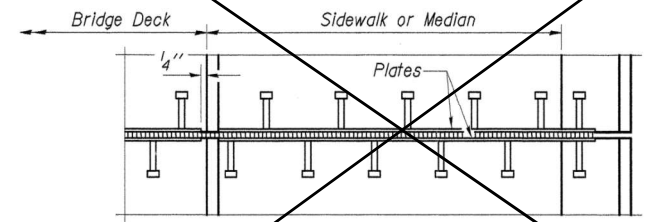


SECTION THRU EXPANSION JOINT
(2 1/2" and 4" joint seals)

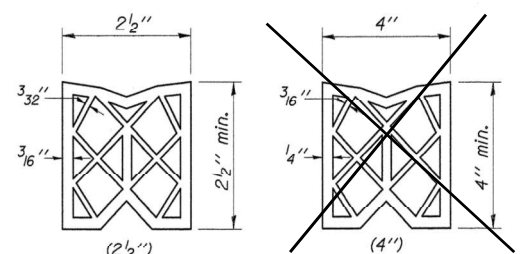
~~Bridge Joint System (Expansion)~~

Design Movement	Required Preformed Joint Seal Size	Required Strip Seal Rated movement
1"	2 1/2"	1"
1 5/8"	4"	2"

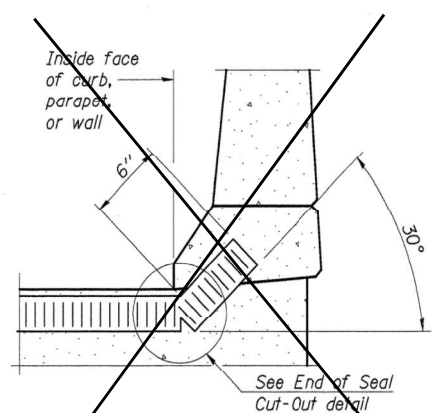
GENERAL NOTES
Furnish steel plates in segments of 20 feet maximum length. Maximum space between installed segments shall be 3/16". Seal space with silicone sealant suitable for structural steel.



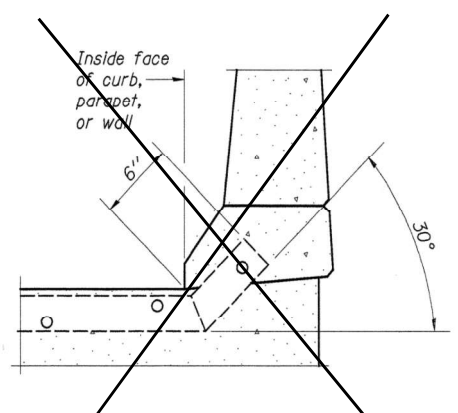
PLAN AT SIDEWALK OR MEDIAN



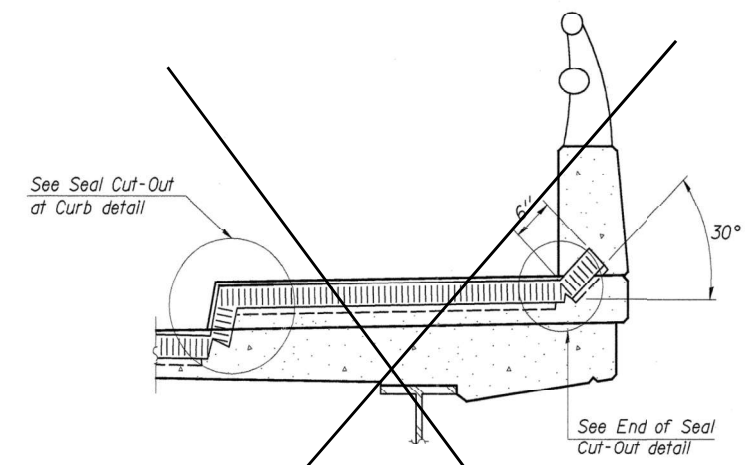
PREFORMED JOINT SEAL



AT CURB, PARAPET, OR WALL
(Showing seal)



AT CURB, PARAPET, OR WALL
(Showing plate)



AT SIDEWALK OR MEDIAN*
(Showing plate and seal)

Shorter plates with a single row of studs at 12" centers may be necessary on medians which are shallower than 9". See manufacturer's recommendation.

BILL OF MATERIAL

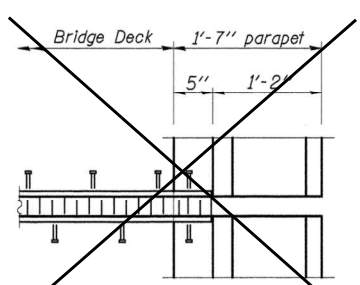
Item	Unit	Total
Bridge Joint System (Expansion), 1"	Foot	81

Preformed Joint Seal 1"

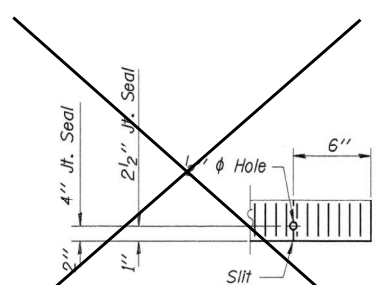
~~Rehabilitation Project~~

DESIGNED	A.R.K.
CHECKED	P.S.L. & F.J.S.
DRAWN	S.A.P., K.T.R. & J.P.S.
CHECKED	A.R.K. & F.J.S.

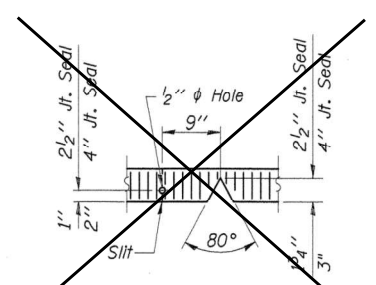
~~EJ-BJS 9-01-03~~



PLAN AT PARAPET



END OF SEAL CUT-OUT



SEAL CUT-OUT AT CURB

(Sheet 1 of 2)
BRIDGE JOINT SYSTEM - EXPANSION (PREFORMED JOINT SEAL)
U.S. RTE. 45/52 OVER
SOUTH BRANCH ROCK CREEK
F.A.P. RTE. 330 - SECTION 16BR
KANKAKEE COUNTY
STA. 356+17.50 - STR. NO. 046-0047

4440 ASH GROVE
SPRINGFIELD, IL 62707
(217) 93-8600
psinc@amvid.com

OZYURT AND STONE, INC.
CONSULTING ENGINEERS

JOB NO: 0306.3
FILE: JOINTDGM
DATE: 08-04-04

MODEL_PLOT
FILE NAME: Y:\DOT\1321-09_66F71\CADD\Highway\CADD_Sheets\0366F71-sh8-misc02.dgn



USER NAME = nhc	DESIGNED - ELH	REVISED -
ESCA PROJECT NO. 1321.09	DRAWN - NHC	REVISED -
PLOT SCALE = 0.1667' / in.	CHECKED - ELH	REVISED -
PLOT DATE = 9/22/2021	DATE - 09/21	REVISED -

STATE OF ILLINOIS
DEPARTMENT OF TRANSPORTATION

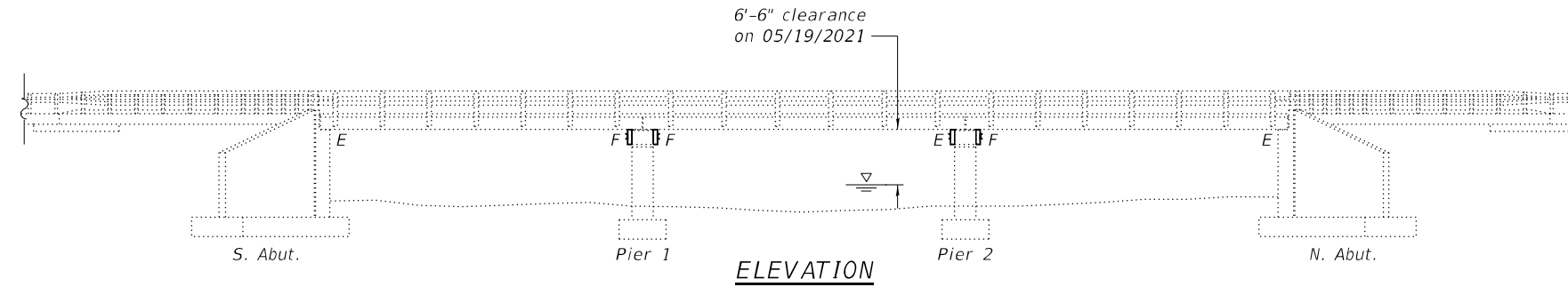
PREFORMED JOINT SEAL
STRUCTURE NO. 046-0047

SCALE: NA SHEET 1 OF 1 SHEETS STA. TO STA.

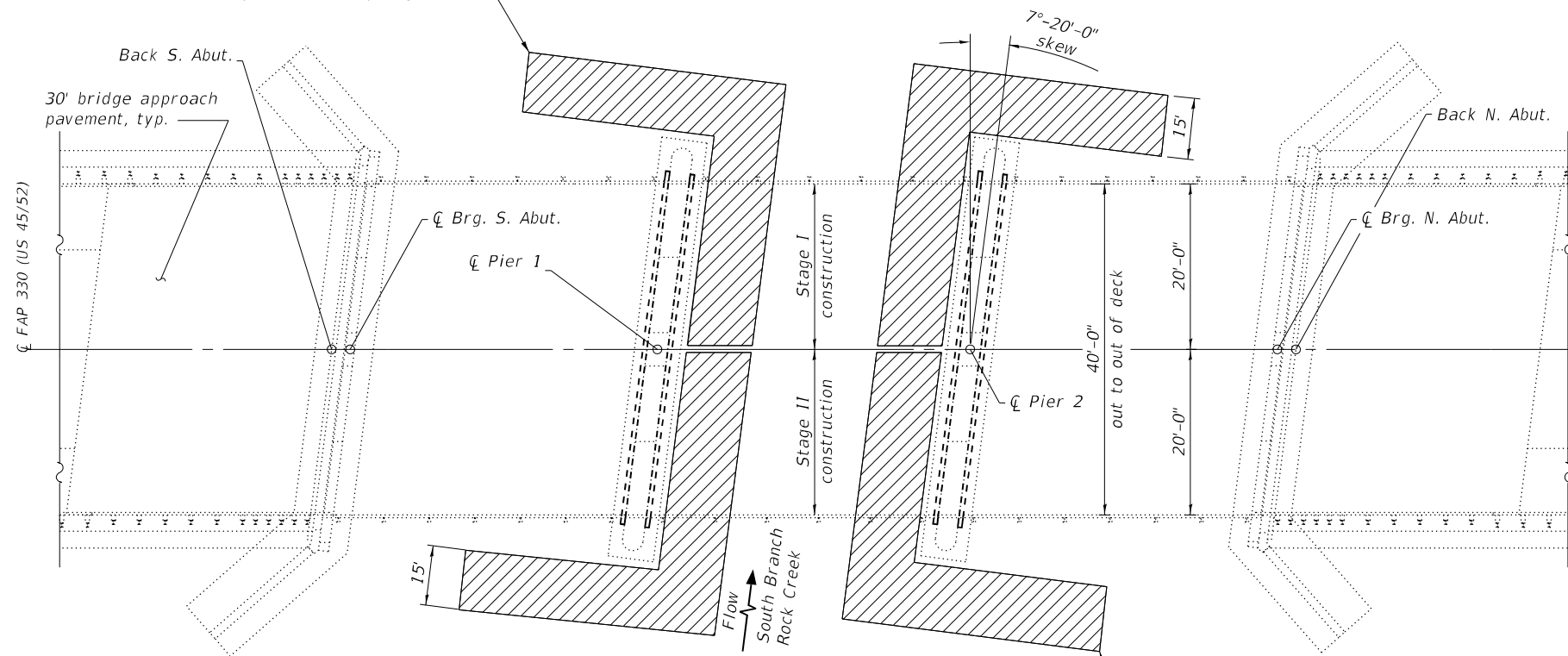
F.A.P. RTE.	SECTION	COUNTY	TOTAL SHEETS	SHEET NO.
330	(16BR)BRR	KANKAKEE	11	9

CONTRACT NO. 66F71
ILLINOIS FED. AID PROJECT

Exhibit



Temporary causeway
Approximately 127 sq. yds of
clean coarse aggregates.
To be removed upon
completion of project.

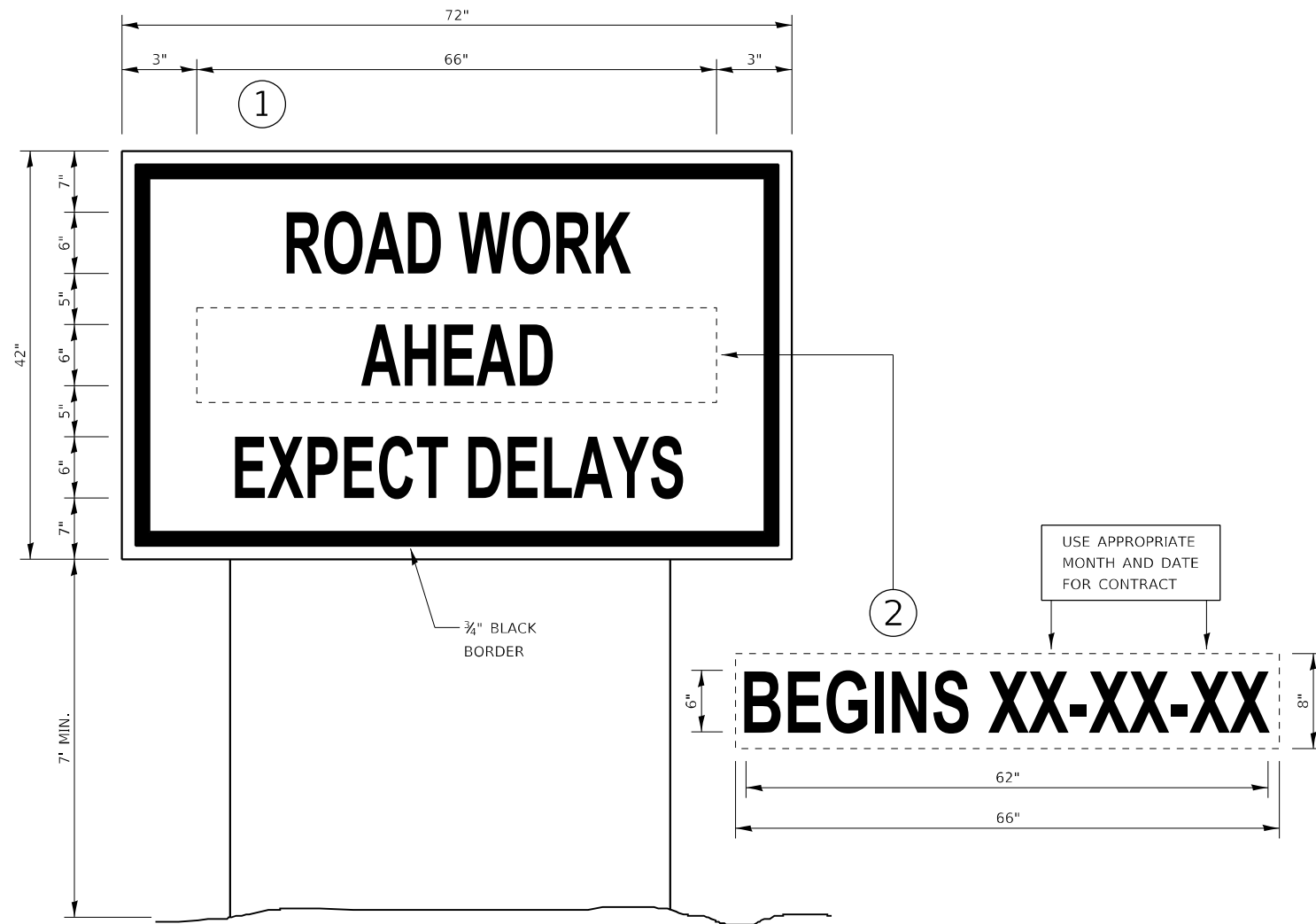


PLAN

Temporary causeway
Approximately 127 sq. yds of
clean coarse aggregates.
To be removed upon
completion of project.

Not to Scale

USER NAME = nhc	DESIGNED - D3	REVISED -	STATE OF ILLINOIS DEPARTMENT OF TRANSPORTATION	CAUSEWAY/WORK PAD DRAWING STRUCTURE NO. 046-0047	F.A.P. RTE. = 330	SECTION = (16BR)BRR	COUNTY = KANKAKEE	TOTAL SHEETS = 11	SHEET NO. = 10	
PLOT SCALE = 0:2 1/4" / in.	DRAWN - D3	REVISED -			CONTRACT NO. 66F71					
PLOT DATE = 8/10/2021	CHECKED - D3	REVISED -			SHEET 1 OF 1 SHEETS					
					ILLINOIS FED. AID PROJECT					



TEMPORARY INFORMATION SIGNING

NOTES:

1. USE 6" D BLACK LETTERING ON FLUORESCENT ORANGE BACKGROUND.
2. ERECT SIGNS AT LOCATIONS IN ADVANCE OF THE "ROAD CONSTRUCTION AHEAD" SIGNS AS DIRECTED BY THE ENGINEER.
3. ERECT SIGN ① WITH INSTALLED PANEL ② A MINIMUM OF ONE WEEK PRIOR TO THE START OF THE LANE CLOSURE.
4. REMOVE PANEL ② ON THAT DATE.
5. SEE SPECIAL PROVISION "TEMPORARY INFORMATION SIGNING" FOR ADDITIONAL INFORMATION.
6. WILL BE PAID FOR PER SQ FT AS "TEMPORARY INFORMATION SIGNING". EACH SIGN = 21 SQ FT AND THE DATE PANEL ② WILL NOT BE MEASURED SEPARATELY FOR PAYMENT.

720-8

MODEL PLOT FILE NAME: Y:\PROJECTS\1321-09_66F71\CADD\Highway\CADD_Sheets\0366F71-shs-deta101.dgn



USER NAME = nhc
 ESCA PROJECT NO. 1321.09
 PLOT SCALE = 0.1667' / in.
 PLOT DATE = 8/10/2021

DESIGNED - ELH
 DRAWN - NHC
 CHECKED - ELH
 DATE - 07/21

REVISED -
 REVISED -
 REVISED -
 REVISED -

**STATE OF ILLINOIS
 DEPARTMENT OF TRANSPORTATION**

TEMPORARY INFORMATION SIGNING

SCALE: NA SHEET 1 OF 1 SHEETS STA. TO STA.

F.A.P. RTE.	SECTION	COUNTY	TOTAL SHEETS	SHEET NO.
330	(16BR)BRR	KANKAKEE	11	11
CONTRACT NO. 66F71				
ILLINOIS FED. AID PROJECT				