

F.A. RTE.	SECTION	COUNTY	TOTAL SHEET NO.
FA 587	135 RS-3	BUREAU	36
F.H.W.A. REG.	ILLINOIS	PROJECT	1

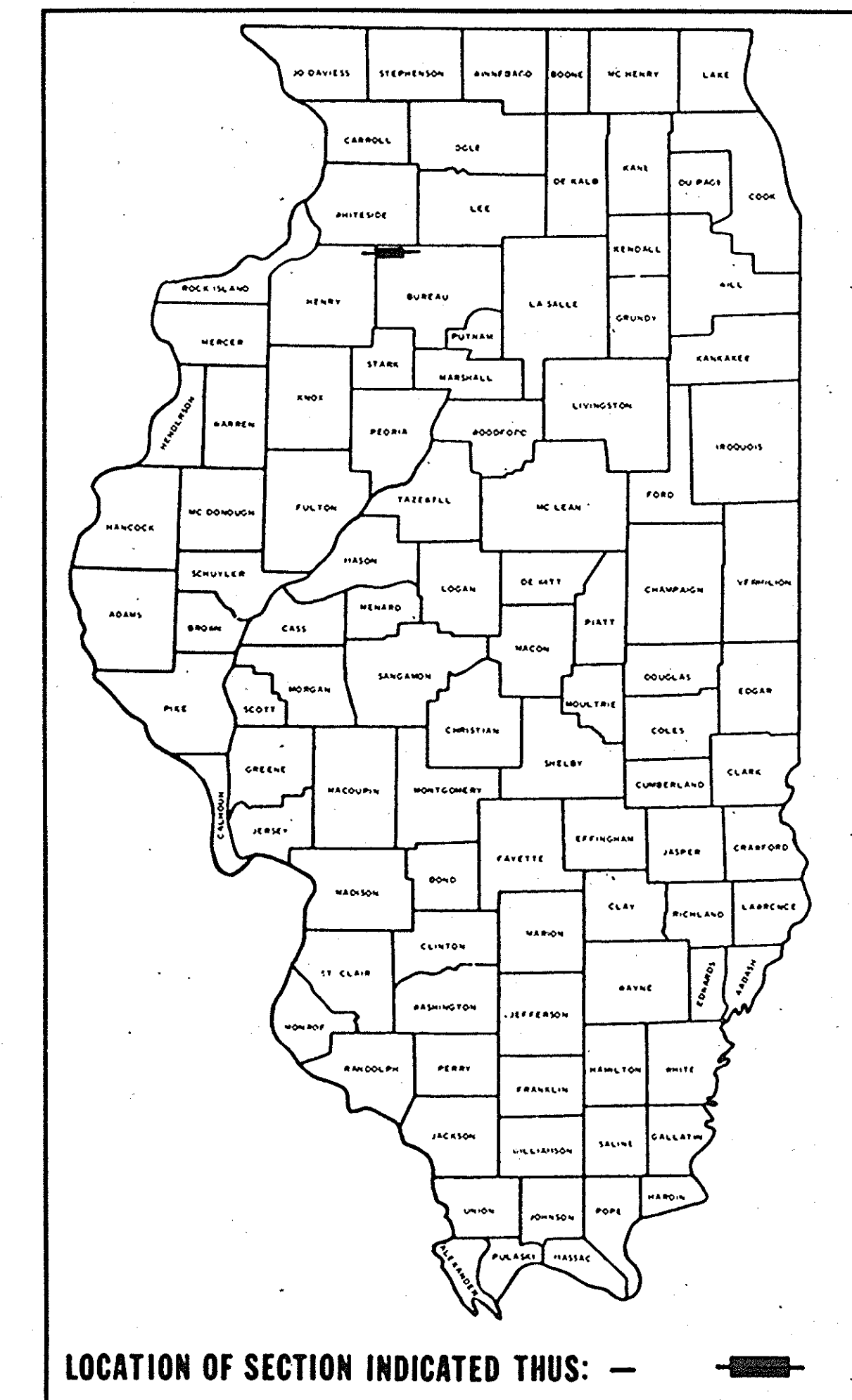
P-92-101-83

INDEX OF SHEETS

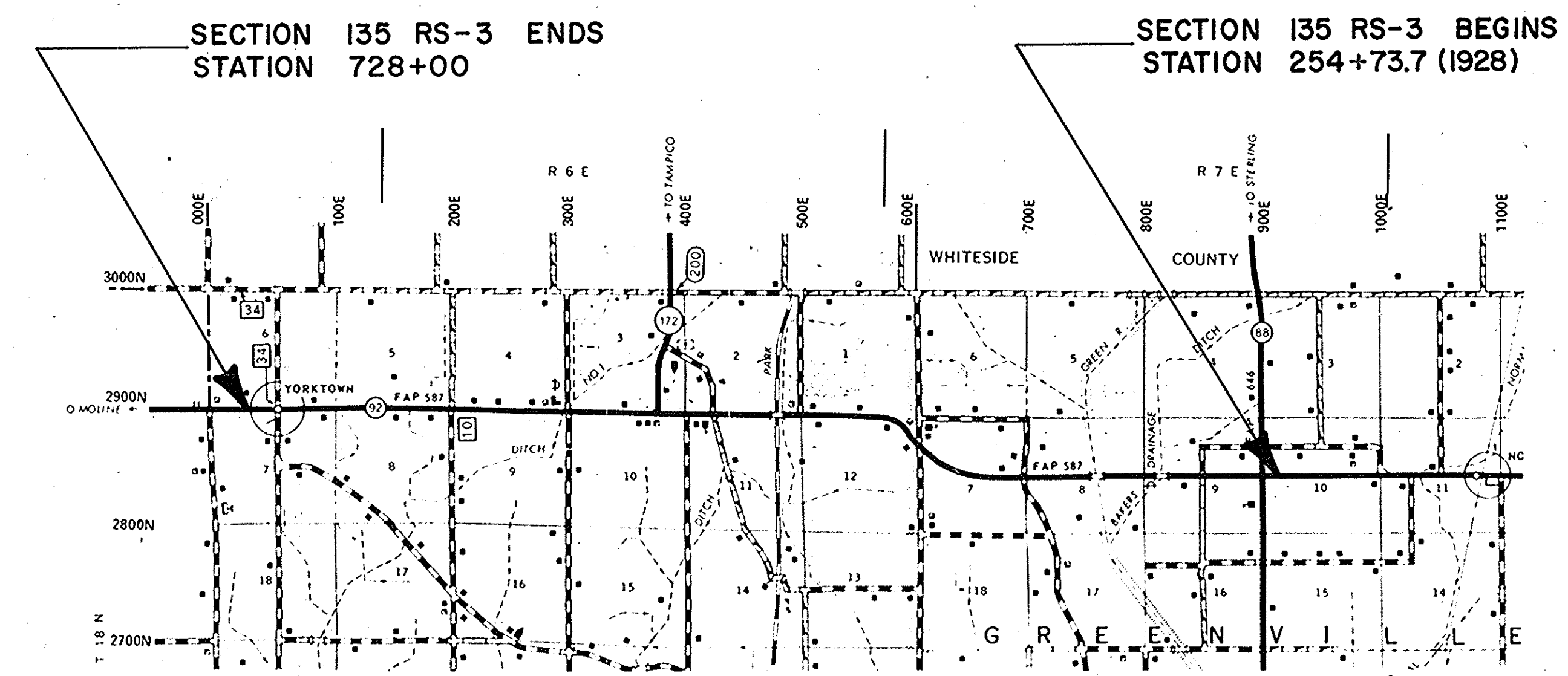
SEE SHEET 2

FOR INFORMATION ONLY

STATE OF ILLINOIS
DEPARTMENT OF TRANSPORTATION
DIVISION OF HIGHWAYS
**PLANS FOR PROPOSED
FEDERAL AID HIGHWAY**
FA ROUTE 587
SECTION 135 RS-3
BUREAU COUNTY



C-92-064-84



DESIGN DESIGNATION
150 (05) COLLECTOR 0.49 (B-20)

LAYOUT
SCALE 1" = 1 MILE

INCLUDED IN SECTION 135 RS-3
IS THE CHANNELIZATION OF THE
INTERSECTION OF IL 88 AND IL 92

GROSS LENGTH OF SECTION = 47326.3 Ft. = 8.963 Mi.
NET LENGTH OF SECTION = 47326.3 Ft. = 8.963 Mi.

STATE OF ILLINOIS
DEPARTMENT OF TRANSPORTATION
DIVISION OF HIGHWAYS

SUBMITTED: 19 APRIL 1984

EXAMINED: 5-10 1984 *Ralph C. Wolner* DISTRICT ENGINEER

PASSED: 5-10 1984 *[Signature]* ENGINEER OF PLANS AND CONTRACTS

APPROVED: 5/10 1984 *[Signature]* ENGINEER OF DESIGN

[Signature] DIRECTOR, DIVISION OF HIGHWAYS

DISTRICT NO. 2
DIXON, ILLINOIS

CONTRACT NO. 38208

CALL J.U.L.I.E. BEFORE YOU DIG 800-892-0123
FAIRFIELD & GREENFIELD TWPS.

FIELD BOOK NO. 22

PROJECT ENGINEER GEORGE SCHNEIDER SQUAD LEADER LOU PFULB

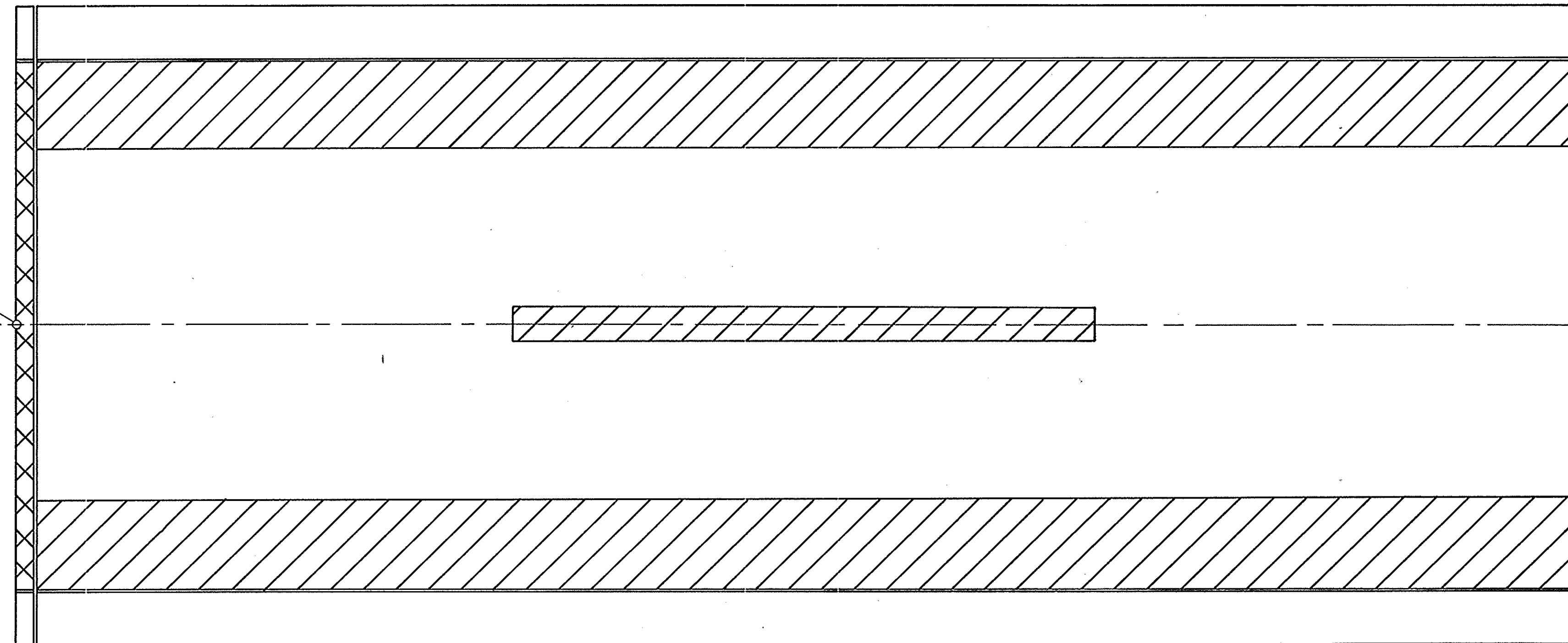
BRIDGE DECK REPAIRS

ROUTE NO.	REG.	COUNTY	TOTAL SHEETS	SHEET NO.
FA 587	135	BUREAU	36	23
FED. ROAD DIST. NO.	RS-3	ILLINOIS PROJECT		

SN 006-0096
 SBI ROUTE 92 (IL 92)
 OVER
 I&M FEEDER CANAL
 SECTION 135-B-1
 STATION 230+75 (1957)

BK. W. ABUT.
STA. 491+78.75

BK. E. ABUT.
STA. 490+89.25



DECK SLAB REPAIR (PARTIAL DEPTH)

Location Sq. Yds.
 BRIDGE 31
 (Estimated Amount After Scarification)

DECK SLAB REPAIR (FULL DEPTH)

Location Sq. Yds.
 BRIDGE (Estimate) 3

LEGEND

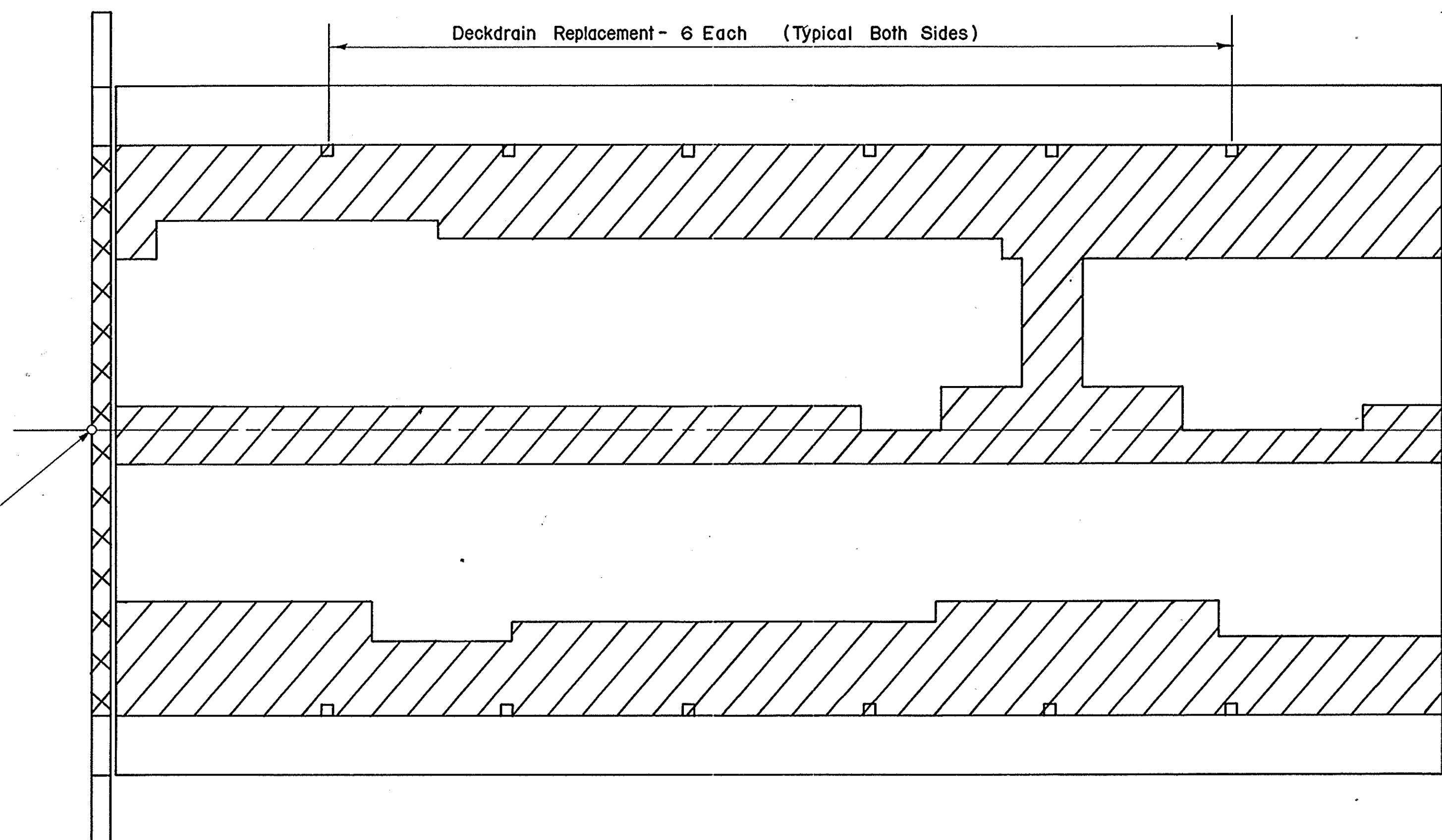
= DELAMINATED AREAS
 INDICATES AREAS OF
 PROBABLE DECK REPAIRS

SN 006-0098
 SBI ROUTE 92 (IL 92)
 OVER
 BAKERS DRAINAGE DITCH
 SECTION 135-BR
 STATION 414+42 (1957)

CL ILL. 92

BK. W. ABUT.
STA. 308+03.00

BK. E. ABUT.
STA. 307+31.00



DECK SLAB REPAIR (PARTIAL DEPTH)

Location Sq. Yds.
 BRIDGE 32
 (Estimated Amount After Scarification)

DECKDRAIN REPLACEMENT

Location Each
 BRIDGE 12

DECK SLAB REPAIR (FULL DEPTH)

Location Sq. Yds.
 BRIDGE (Estimate) 3

DISTRICT NO.2 DIXON

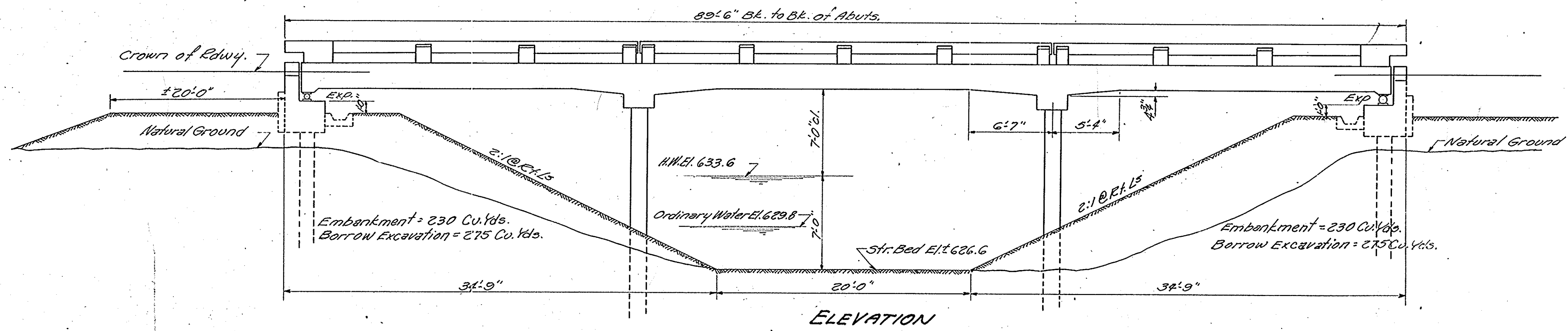
Designed
 Drawn A.C.
 Checked

Date 2/10/84
 Scale 1"=5'

B.M. - S.E. Corner W. Pier # 230+75; El. 645.68 U.S.G.S.
 Existing Structure: Pony Truss 75' span; 16'6" Edwy.; To be removed
 by Contractor. No Salvage.
 Necessary portions of substructure to be removed
 as directed by the Engineer.

STATE OF ILLINOIS
 DEPARTMENT OF PUBLIC WORKS & BUILDINGS
 DIVISION OF HIGHWAYS

ROUTE NO.	SECTION	COUNTY	TOTAL SHEETS	SHEET NO.	SHEET NO.
FA 587	135 RS-3	Bureau	3b	27	
FED. ROAD DIST. NO. 7	ILLINOIS	FED. AID PROJECT			



GENERAL NOTES

Class X concrete shall be used throughout except in handrail.

Handrail concrete shall be used in handrails.

The concrete floor slab shall be finished in accordance with Article 51.18(a) of the Standard Specifications.

The handrail concrete in the rail posts and railings shall be poured in separate operations.

All rollers bearing plates, lead plates and anchor bolts shall be fabricated and set in accordance with Article 51.14 of the Standard Specifications and are included in quantity of Structural Steel, Est. Wt. 320 Lbs.

The following surfaces of expansion guards shall be given two coats of red lead paint; outside faces of vertical leg and top faces of horizontal legs of 4"x6" L's.

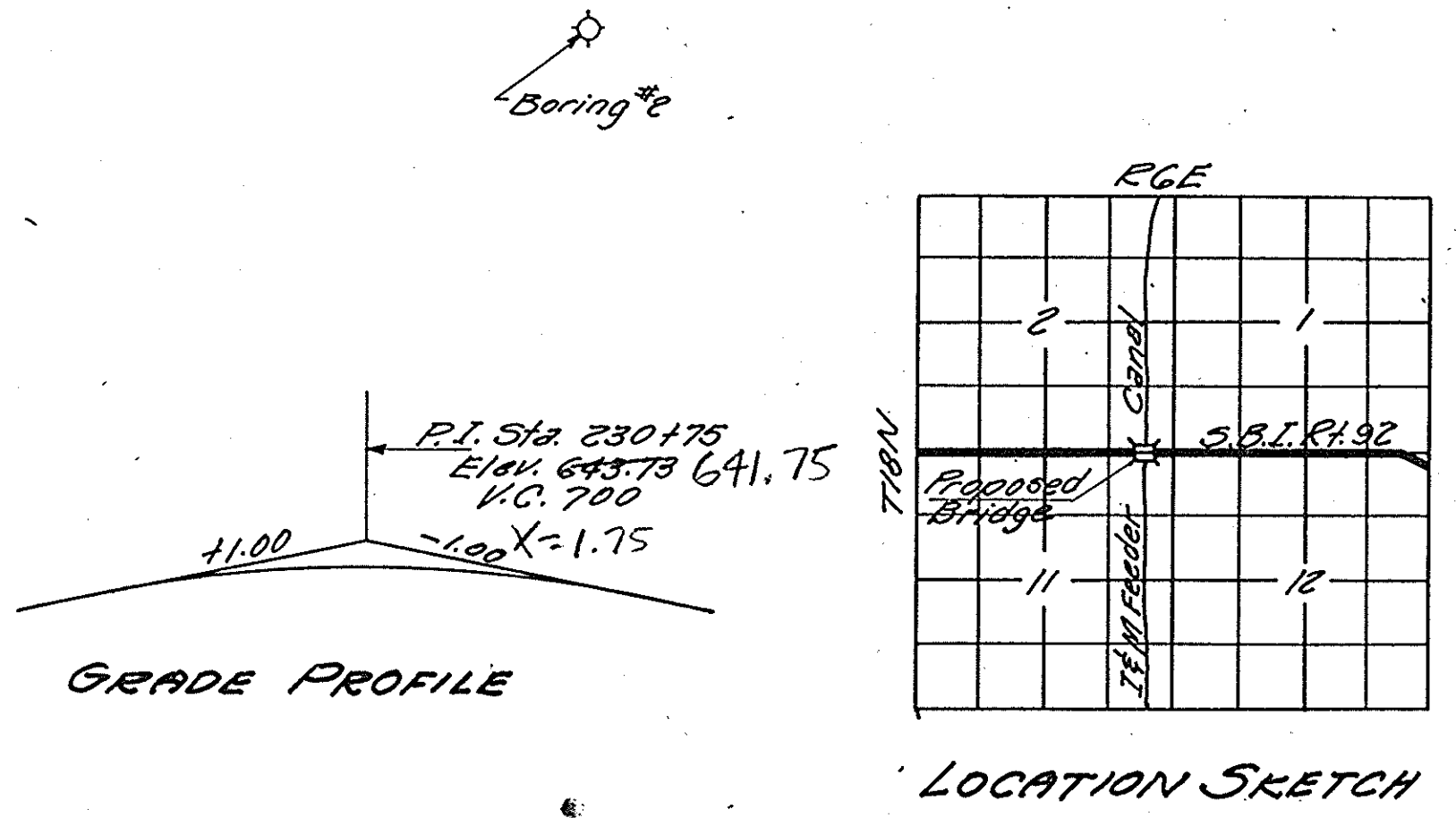
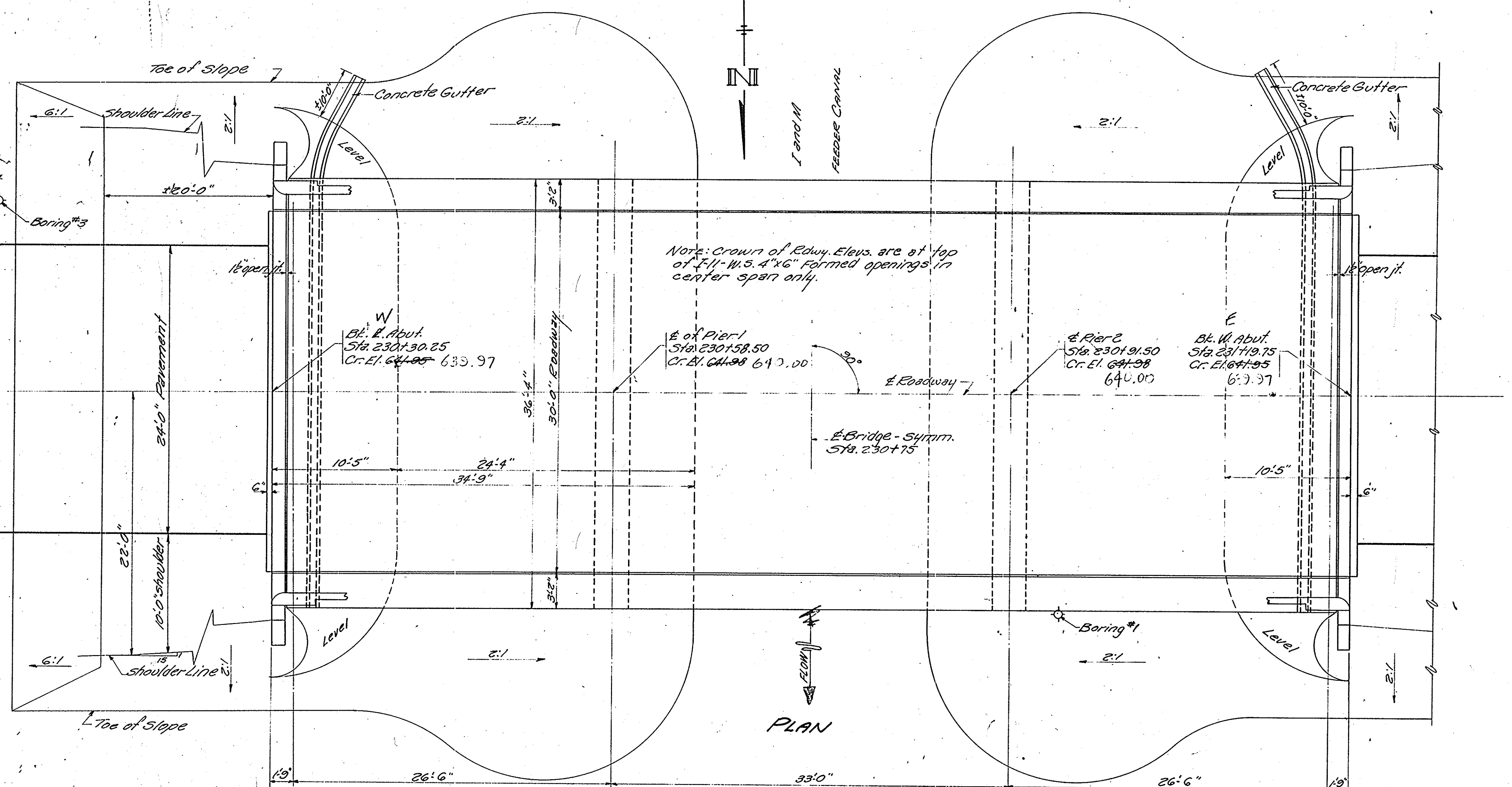
Expansion guards are included in quantity of Structural Steel, Est. Wt. 1812 Lbs.

Expansion guards shall be fabricated and erected in accordance with Article 51.16(d) of the Standard Specifications.

Except as otherwise provided, all structural steel shall receive one shop coat of red lead paint and two field coats of aluminum paint. See Article 51.1 to 51.5 inclusive of the Standard Specifications.

All paint shall be furnished and applied by the contractor.

The contractor shall drive 2 test piles (in permanent locations) as directed by the Engineer before ordering (casting) remainder of piles. One test pile at Pier 2 North End and one at West Abutment South End.



TOTAL BILL OF MATERIAL

Item	Unit	Superstr.	Substr.	Total
Class X Concrete	Cu.Yds.	154.3	39.0	193.3
Reinforcement Bars	Lbs.	39,470	4,490	38,960
Handrail Concrete	Cu.Yds.	4.2	0	4.2
Structural Steel	Lbs.	4880		4880
12" R.C. Piles (Abuts.)	Lin. Ft.		220	220
14" R.C. Piles (Piers)	Lin. Ft.		275	275
Test Piles - 12"	Each		1	1
Name Plate	Each	1		1
Borrow Excavation	Cu.Yds.		550	550
Removal of Exist. Struct.	Each		1	1
Test Piles - 14"	Each		1	1

DESIGNED M. Namaskid
 CHECKED T. Tanski
 DRAWN M.T. E. Rusch
 CHECKED T. T.

EXAMINED W.M. Romine
 PASSED E. Romine
 APPROVED R.H. Bartelme

STATION 230+75
 BUILT 195 BY
 STATE OF ILLINOIS
 S.B.I. RT. 92 SEC. 135B-1
 PROJECT F-191(15)
 LOADING H20-516

WATERWAY INFORMATION

Drainage Area ----- Feeder Canal
 Character ----- Level, rolling, cultivated
 Present Opening ----- 1378 Sq. Ft.
 Proposed Opening ----- 228 Sq. Ft.

DESIGN STRESSES

f_c = 1400 p.s.i. Superstr.
 f_c = 800 p.s.i. Substr.
 f_s = 20,000 p.s.i. Reinft.
 f_s = 18,000 p.s.i. Struct. steel
 17-10

FOR INFORMATION ONLY

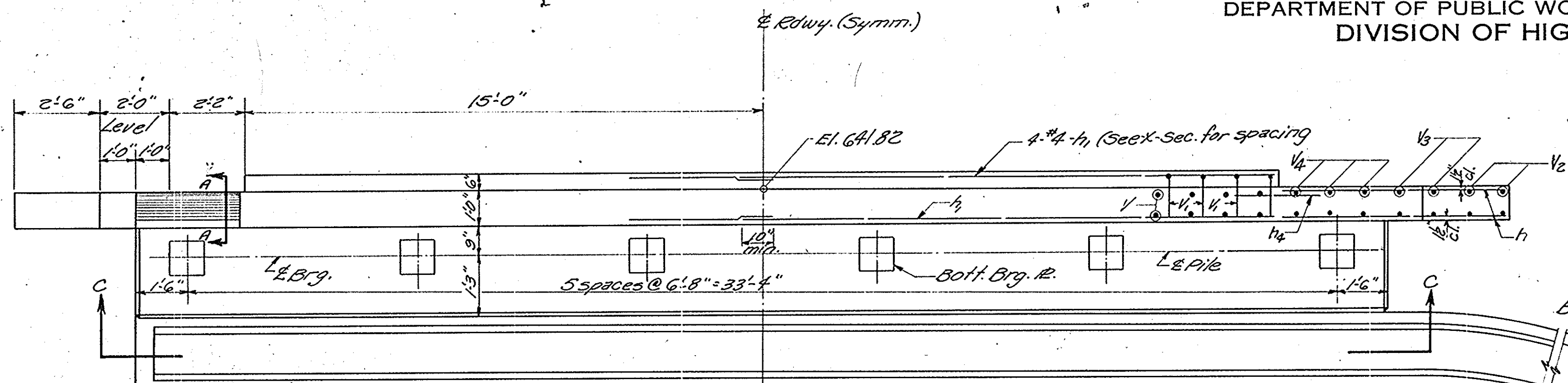
GENERAL PLAN & ELEVATION
 PROJECT F-191()
 S.B.I. RT. 92 SEC. 135B-1
 BUREAU COUNTY
 STA. 230+75 (1957)

LETTERING FOR NAME PLATE
 See Std. 213

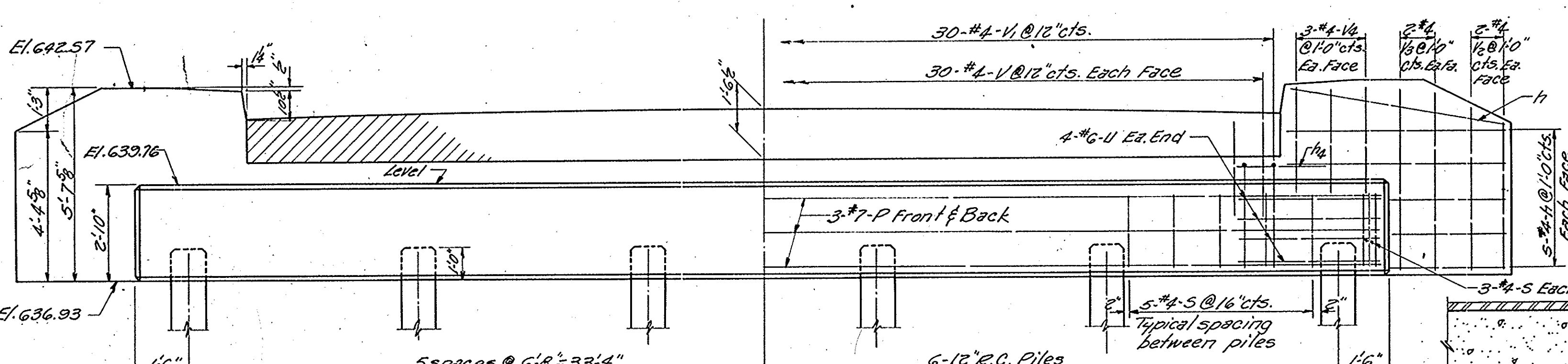
LOADING H20-516-44

STATE OF ILLINOIS
DEPARTMENT OF PUBLIC WORKS & BUILDINGS
DIVISION OF HIGHWAYS

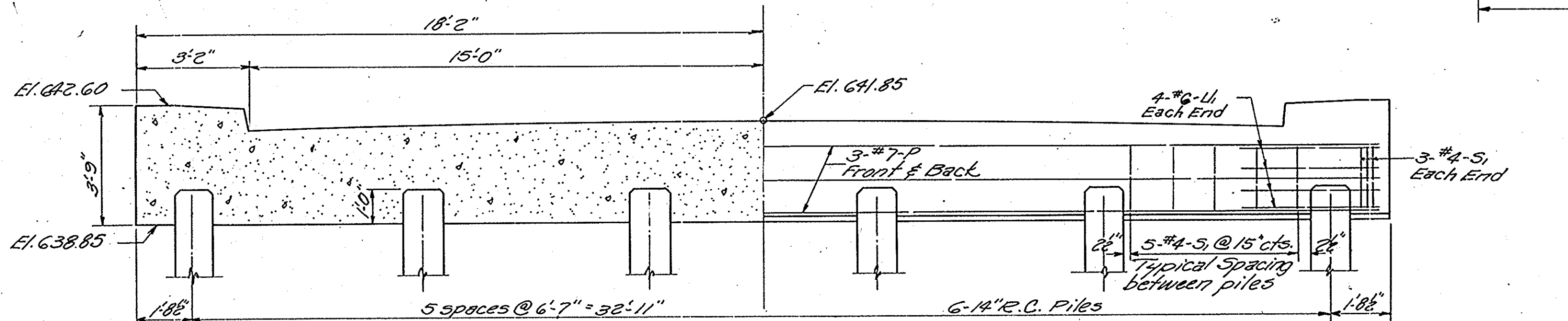
ROUTE NO.	SECTION	COUNTY	TOTAL SHEETS	SHEET NO.	SHEET NO.
FA587	135 RS-3	Bureau	36	29	
FED. ROAD DIST. NO. 7	ILLINOIS	FED. AID PROJECT			SHEETS



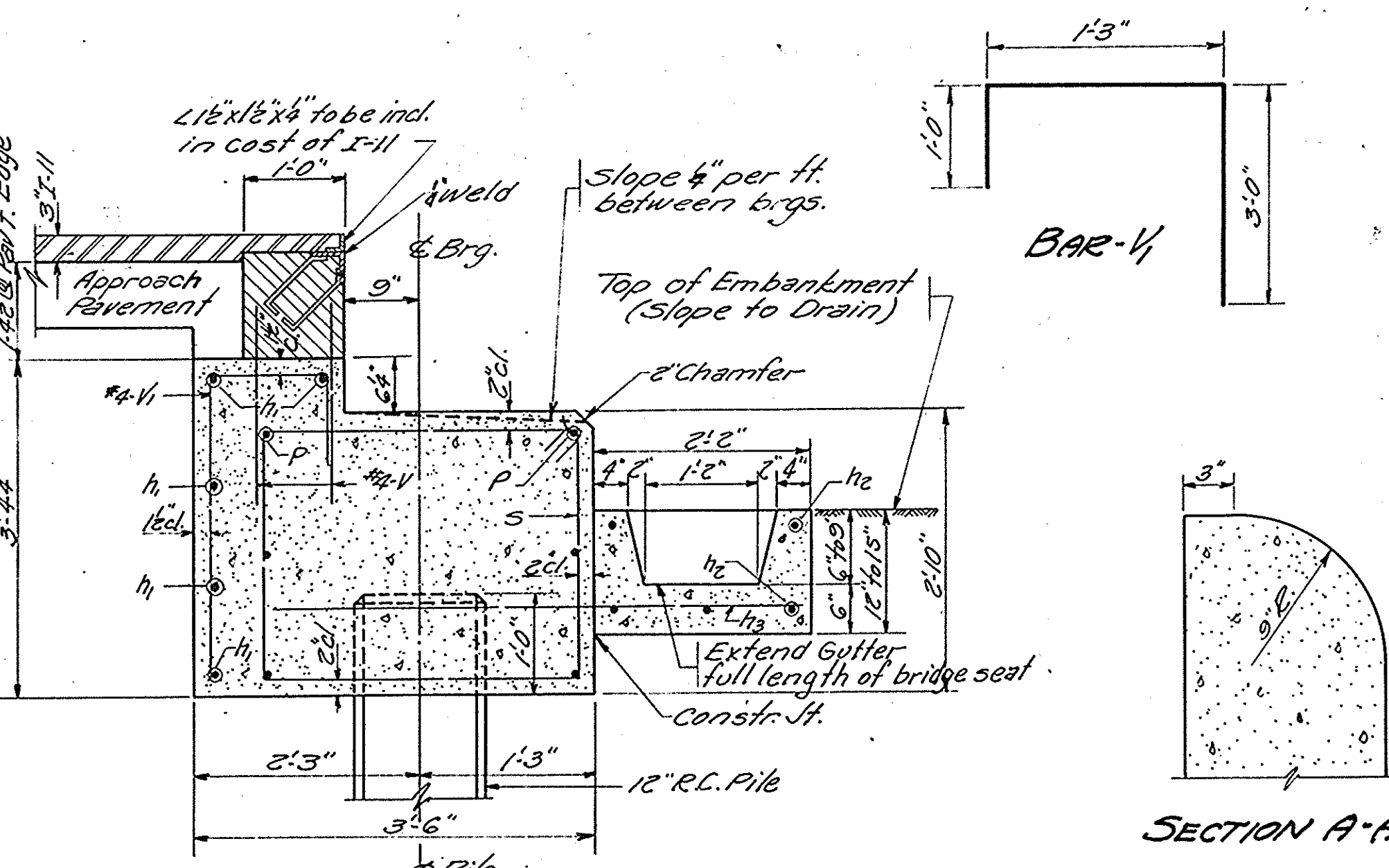
PLAN-EAST & WEST ABUTS.
Note: Plan of East Gutter
West Gutter similar except opposite hand.



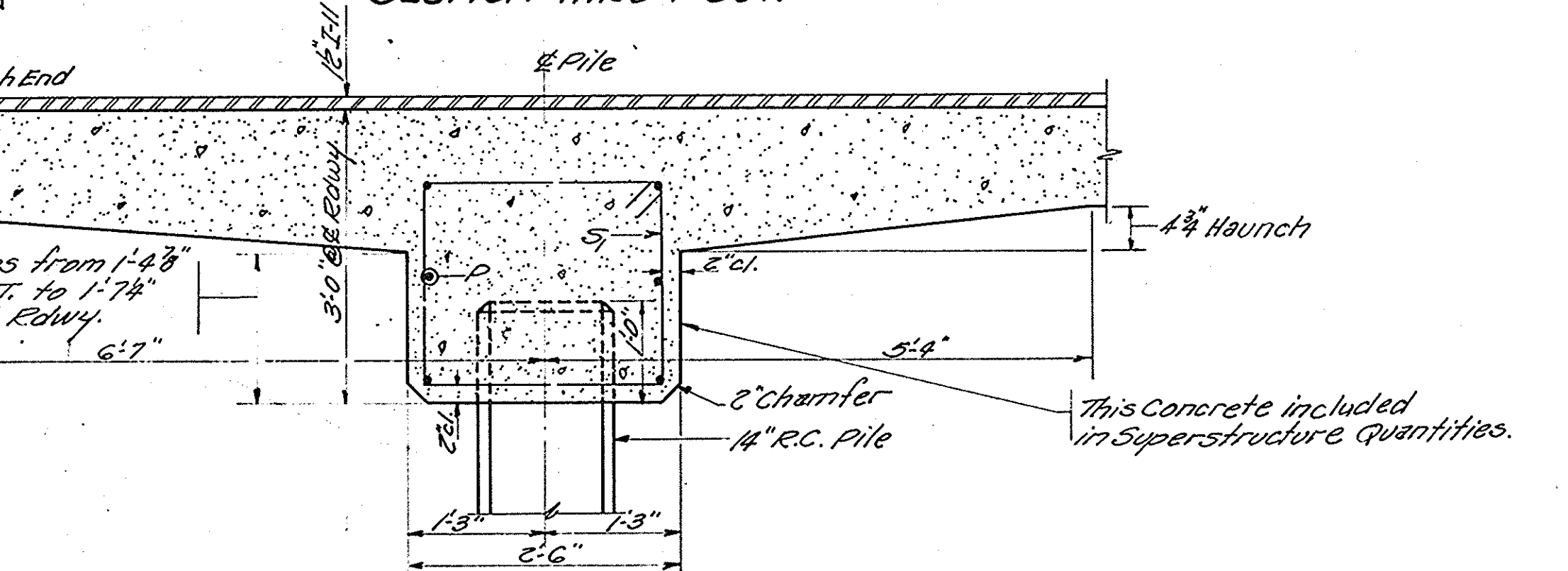
ELEVATION-EAST & WEST ABUTS.



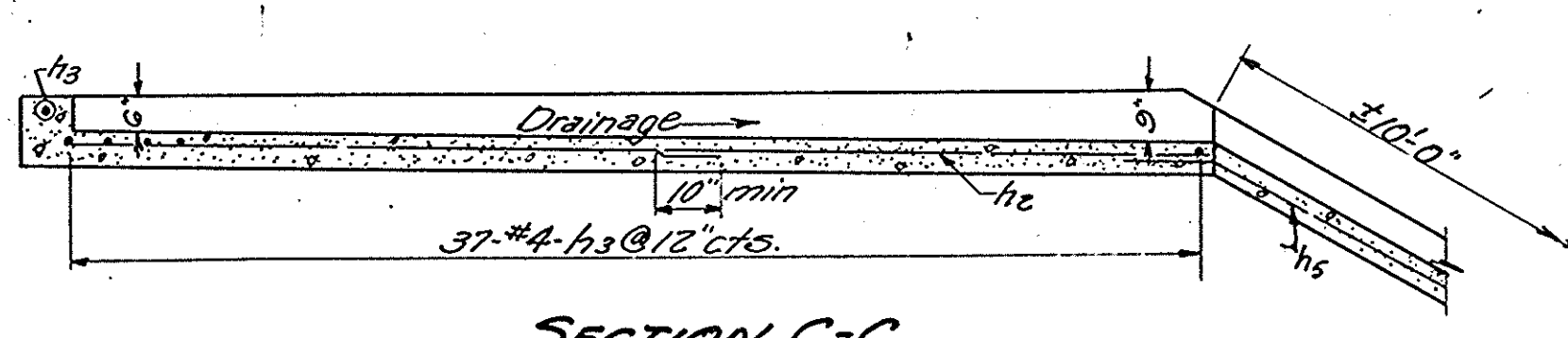
SECTION THRU PIER CAP



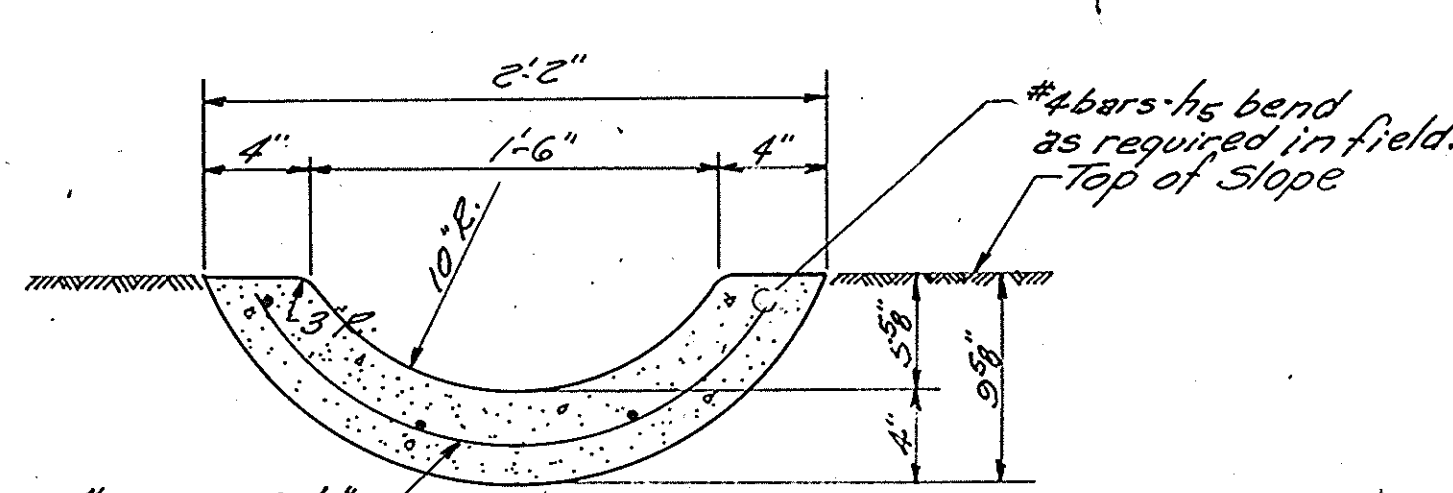
SECTION THRU ABUT.



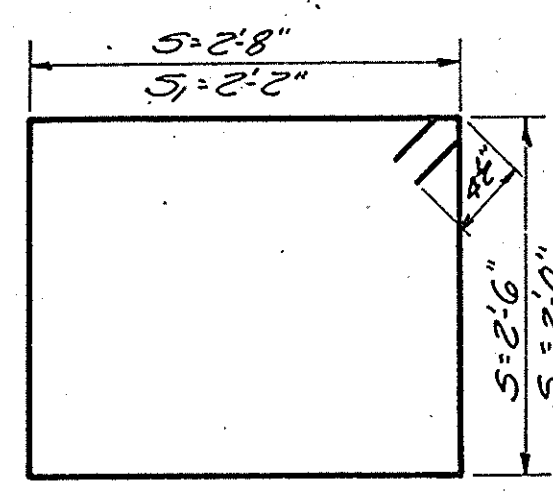
SECTION THRU PIER PILE CAP



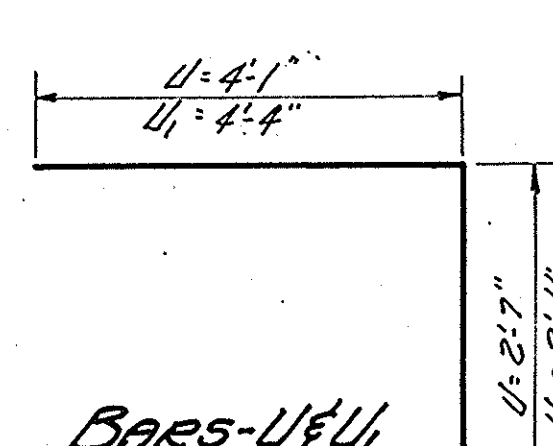
SECTION C-C



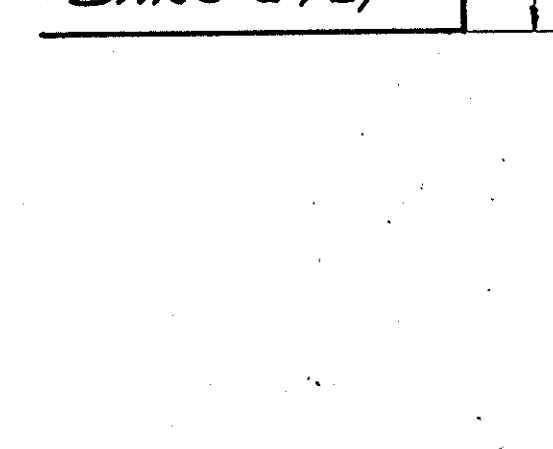
SECTION B-B



BAR-V



BARS-5&S1



BARS-U&U1

BILL OF MATERIAL

Bar No.	Size	Length	Shape
h1	#4	6'-3"	
h2	#4	15'-3"	
h3	#4	20'-0"	
h4	#4	3'-0"	
P	#7	36'-0"	
U	#6	10'-9"	
U1	#6	12'-10"	
V	#4	2'-3"	
V1	#4	5'-3"	
V2	#4	4'-0"	
V3	#4	5'-0"	
V4	#4	5'-3"	
C	#2	2'-6"	
S	#2	1'-1"	
S1	#2	9'-1"	
h5	#4	10'-9"	

* Class X Concrete Cu. Yds. 39.0
Reinforcement Bars Lbs. 4490
12" R.C. Piles Lin. Ft. 220
14" R.C. Piles Lin. Ft. 275
Test Piles - 12" Each 1
Test Piles - 14" Each 1
* This quantity includes 86' of gutter section as detailed in section through abutment and 20' of flume as detailed in Section B-B

PILE DATA @ PIER

14" R.C. Pile
11 Reg'd. + 1 Test Pile
Est. Length: 25'-0"
Test Pile = 1 @ Pier #2 N. End
Capacity = 28 Tons.

PILE DATA @ ABUT.

12" R.C. Pile
11 Reg'd. + 1 Test Pile
Est. Length E. Abut. = 20'-0"
Est. Length W. Abut. = 20'-0"
Test Pile @ W. Abut. = 1 @ S. End
Capacity = 24 Tons.

OCT. 18 1957

DESIGNED M. Tamashiro
CHECKED T. Tanaka
DRAWN M.T. E. Rush
CHECKED T. T.

EXAMINED [Signature]
PASSED [Signature]
APPROVED [Signature]

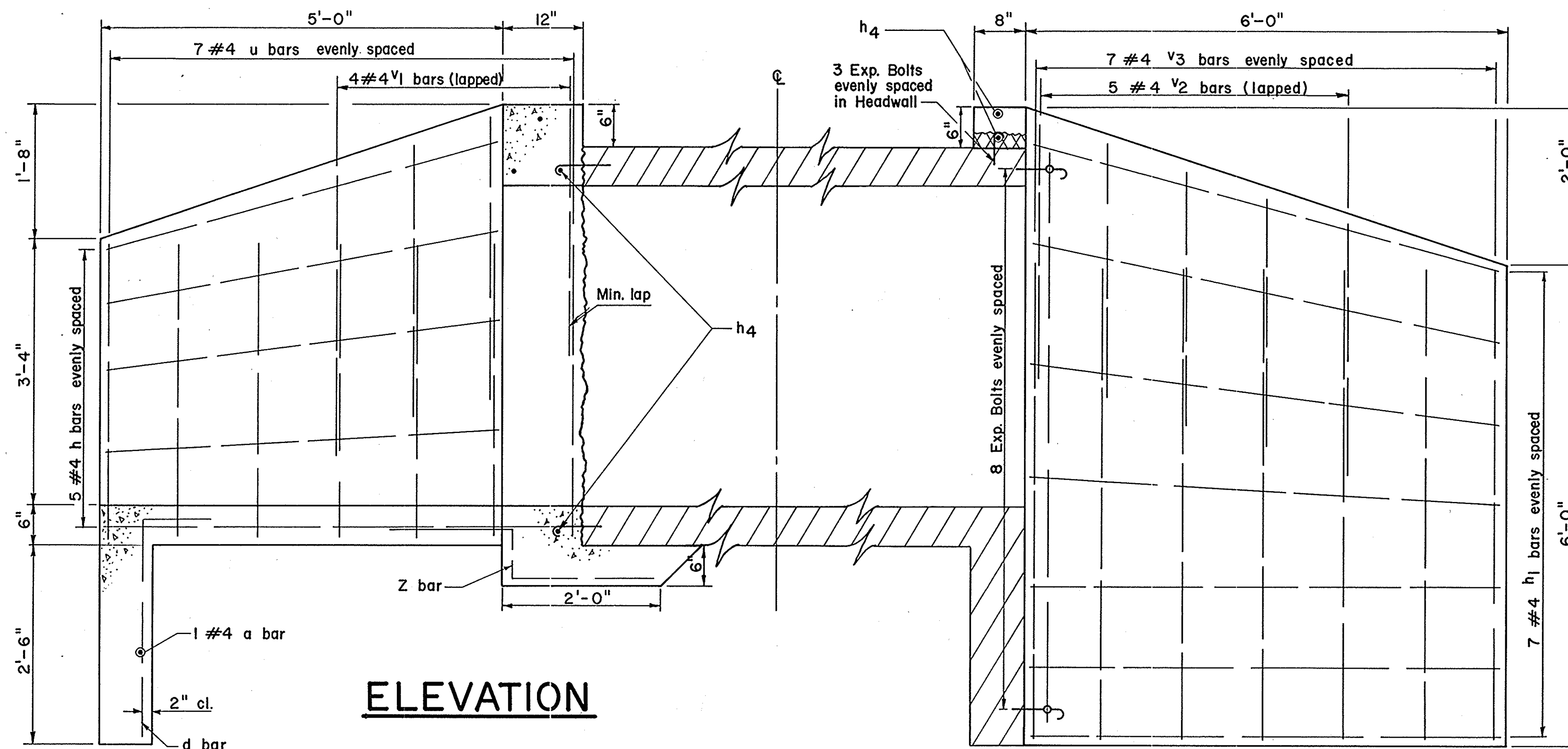
FOR INFORMATION ONLY

SUBSTRUCTURE
S.B.I. RT. 92 SEC. 135 B-1
BUREAU COUNTY
STA. 230+75 (1957)

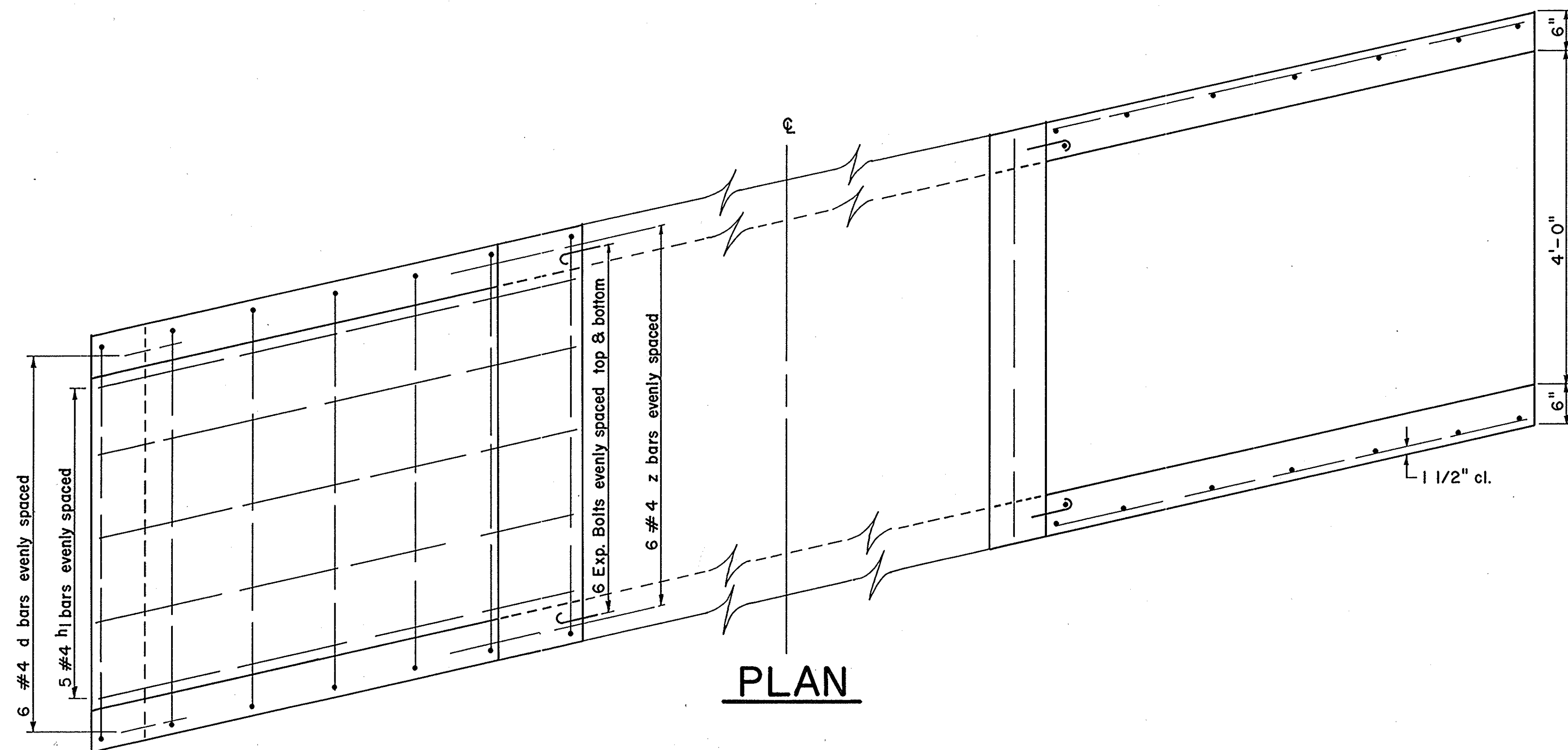
GRATED INLET SPECIAL NO.5 & NO.6

LT. & RT. STA. 691+00

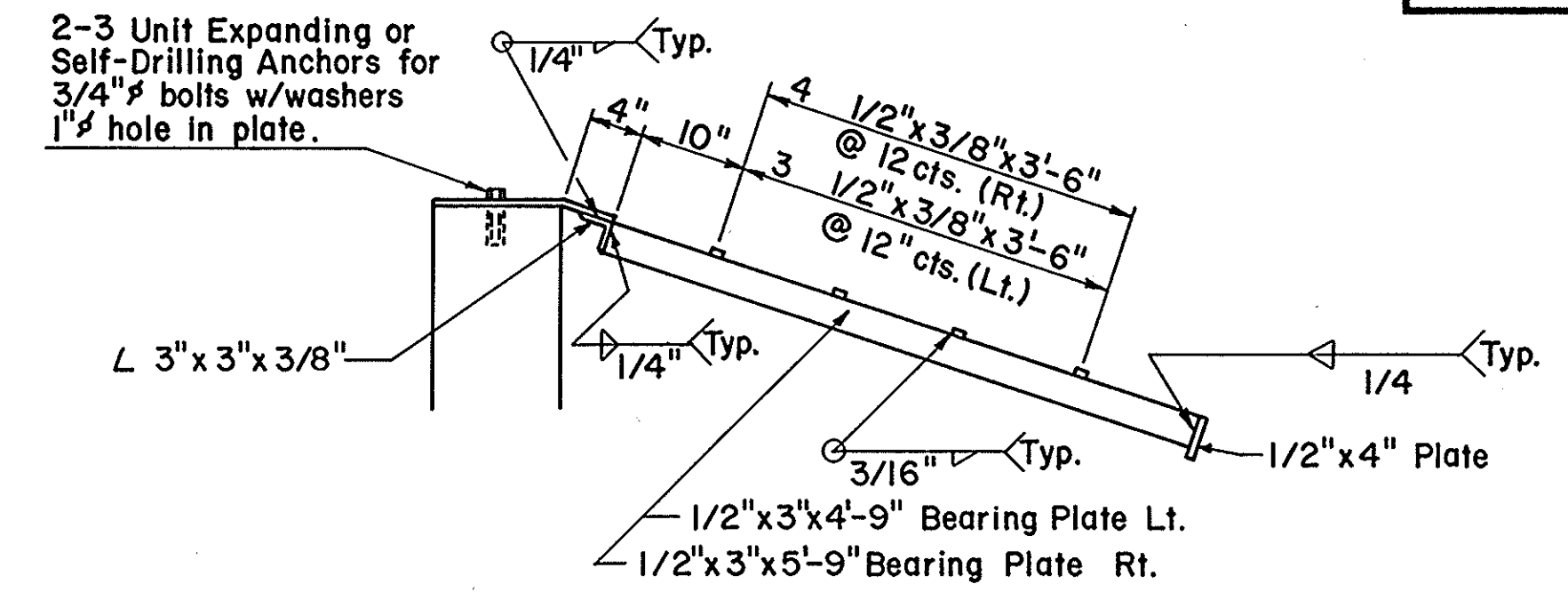
ROUTE NO.	SEC.	COUNTY	TOTAL SHEETS	SHEET NO.
FA 587	135 RS-3	BUREAU	36	35
FED. ROAD DIST. NO. 7 ILLINOIS PROJECT				



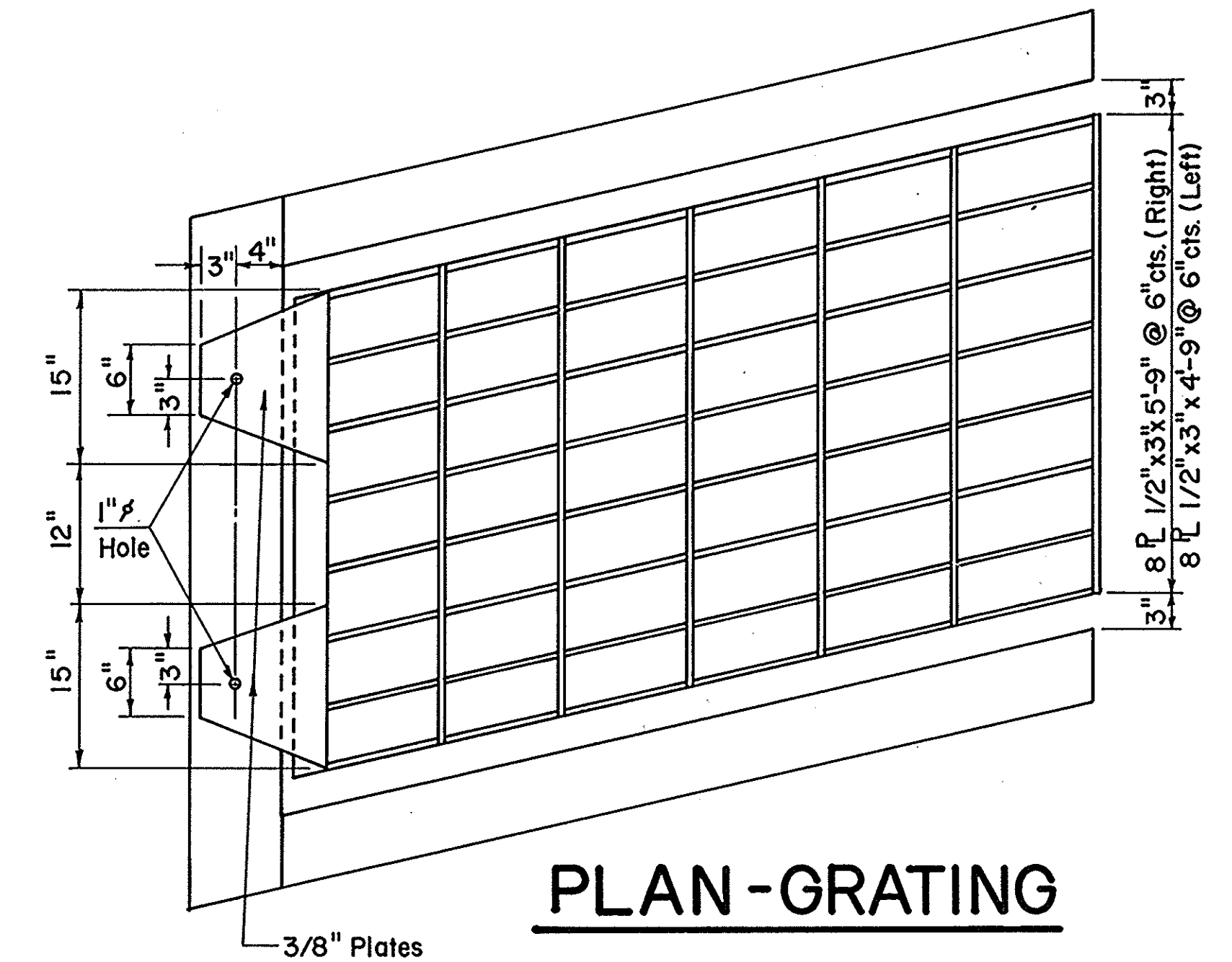
ELEVATION



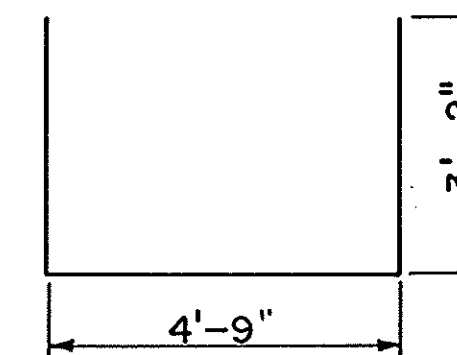
PLAN



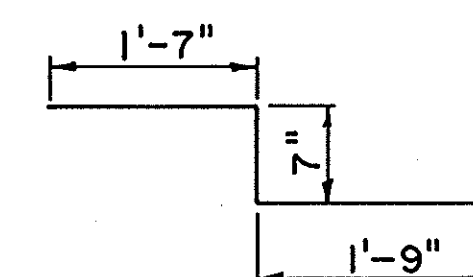
SECTION THRU GRATING



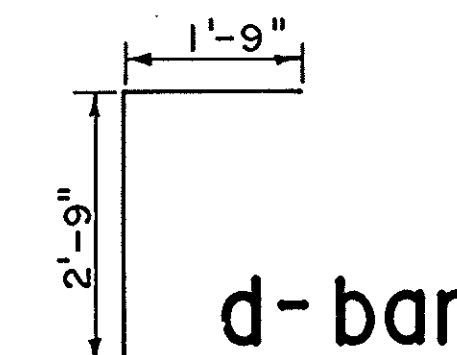
PLAN-GRATING



u - bar



z - bar



d - bar

TOTAL NO.5 & NO.6 BILL OF MATERIALS

Bars	No.	Size	Length
h	5	4	4'-9"
h1	19	4	5'-9"
h4	6	4	4'-9"
v1	8	4	3'-0"
v2	10	4	3'-3"
v3	14	4	5'-10"
a	1	4	4'-9"
d	6	4	4'-6"
u	7	4	11'-1"
z	6	4	3'-11"
Reinforcement Bars	Pound	289	
Class X Concrete	Cu. Yd.	3.5	
Expansion Bolts	Each	28	
Grating	Sq. Ft.	36.7	

Expansion Bolts shall consist of self drilling expansion shields and 3/4" hooked bolts. Hook bolts shall extend a minimum of 9" into new concrete.

All excavation required to construct the structure shown shall be considered incidental to the contract price per each for GRATED INLET SPECIAL.

Class X Concrete for Headwalls shall be used throughout.

Structural steel shapes and plates shall be in accordance with Article 710.0 of the Standard Specifications for Road and Bridge Construction latest revision.

Bolts, nuts and washers shall be in accordance with Article 710.33(B).

All fabrication shall be completed and ready for assembly before galvanizing.

The contract unit price "Each" for GRATED INLET SPECIAL shall include fabrication of Grating, Galvanized Pipe, Class X Concrete, Reinforcement Bars, Bolts, Nuts, Washers and Installation on Existing Culvert.

DISTRICT NO. 2 DIXON

DESIGNED W.A.Z

DRAWN A.C.

CHECKED

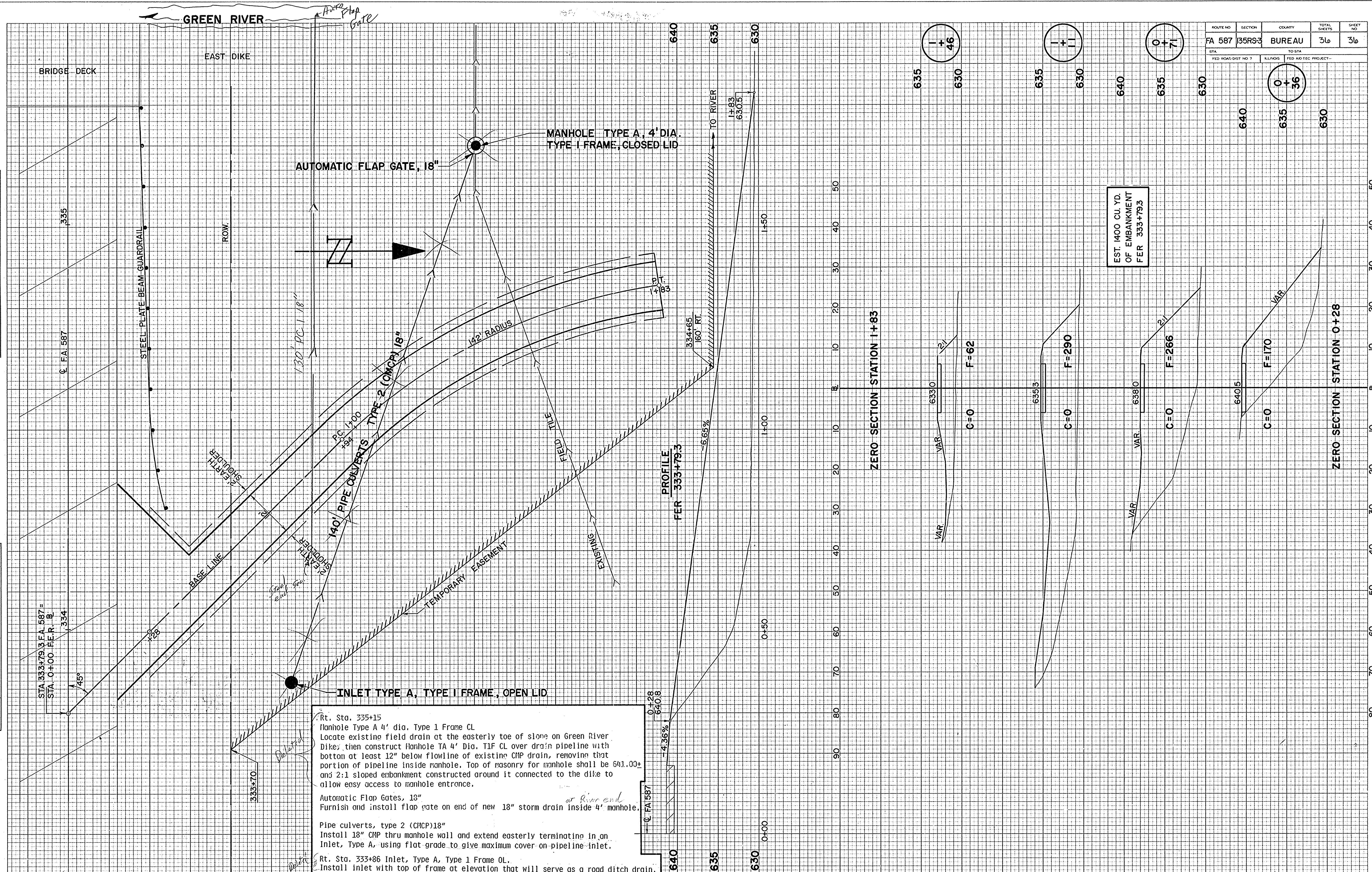
DATE 3/16/84

SCALE 1"=1'

DATE: 3-83
 BY: MAC
 CHECKED: MAC
 NO.:

DATE: 3-83
 BY: MAC
 CHECKED: MAC
 NO.:

ROUTE NO.	SECTION	COUNTY	TOTAL SHEETS	SHEET NO.
FA 587	35RS-3	BUREAU	36	36
STA.	TO STA.			
FED. ROAD DIST. NO. 7	ALIGN.	FED. AID REC. PROJECT		



Rt. Sta. 335+15
 Manhole Type A 4' dia. Type 1 Frame CL
 Locate existing field drain at the easterly toe of slope on Green River Dike; then construct manhole TA 4' Dia. T1F CL over drain pipeline with bottom at least 12" below flowline of existing CMP drain, removing that portion of pipeline inside manhole. Top of masonry for manhole shall be 641.00± and 2:1 sloped embankment constructed around it connected to the dike to allow easy access to manhole entrance.

Automatic Flap Gates, 18"
 Furnish and install flap gate on end of new 18" storm drain inside 4' manhole.

Pipe culverts, type 2 (CMCP) 18"
 Install 18" CMP thru manhole wall and extend easterly terminating in an Inlet, Type A, using flat grade to give maximum cover on pipeline inlet.

Rt. Sta. 333+86 Inlet, Type A, Type 1 Frame OL
 Install inlet with top of frame at elevation that will serve as a road ditch drain.