

STATE OF ILLINOIS
DEPARTMENT OF TRANSPORTATION

F.A.P. RTE.	SECTION	COUNTY	TOTAL SHEETS	SHEET NO.
332	(12VR,2B)B	WABASH	24	1
		ILLINOIS	CONTRACT NO. 74320	

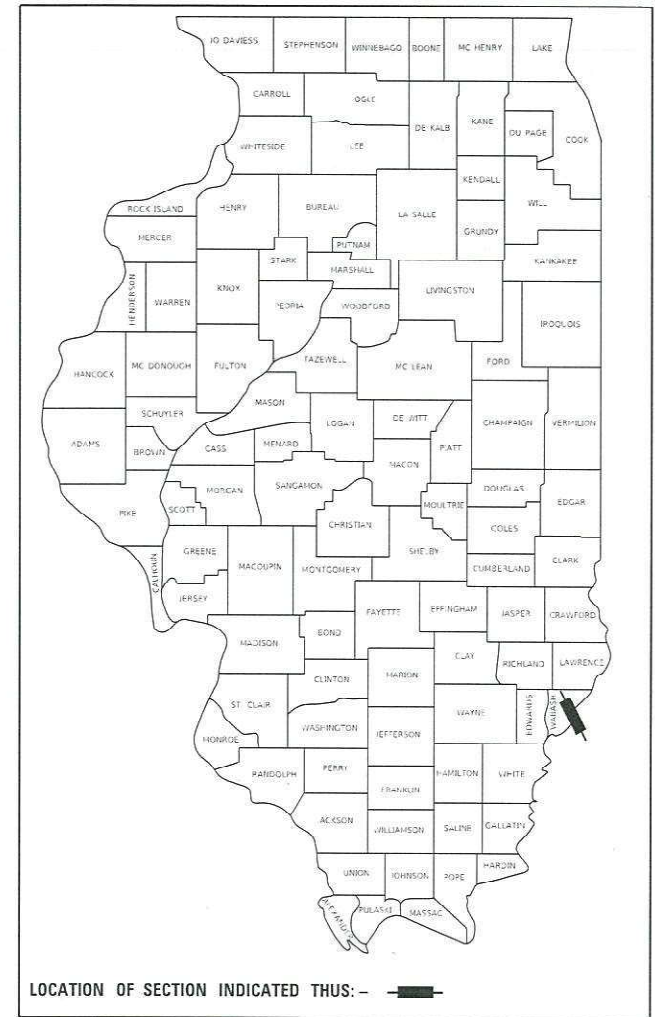
D-97-043-08

FOR INDEX OF SHEETS, SEE SHEET NO. 2

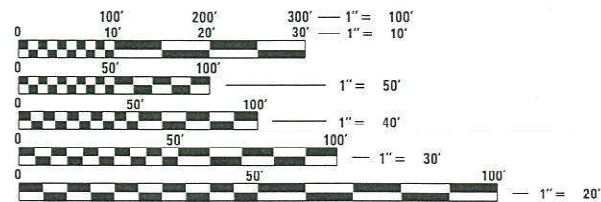
**PROPOSED
HIGHWAY PLANS**

FAP ROUTE 332 (IL 1)
SECTION (12VR,2B)B
PROJECT NHPP-4JP9(977)
STRUCTURE REMOVAL
WABASH COUNTY

C-97-091-08



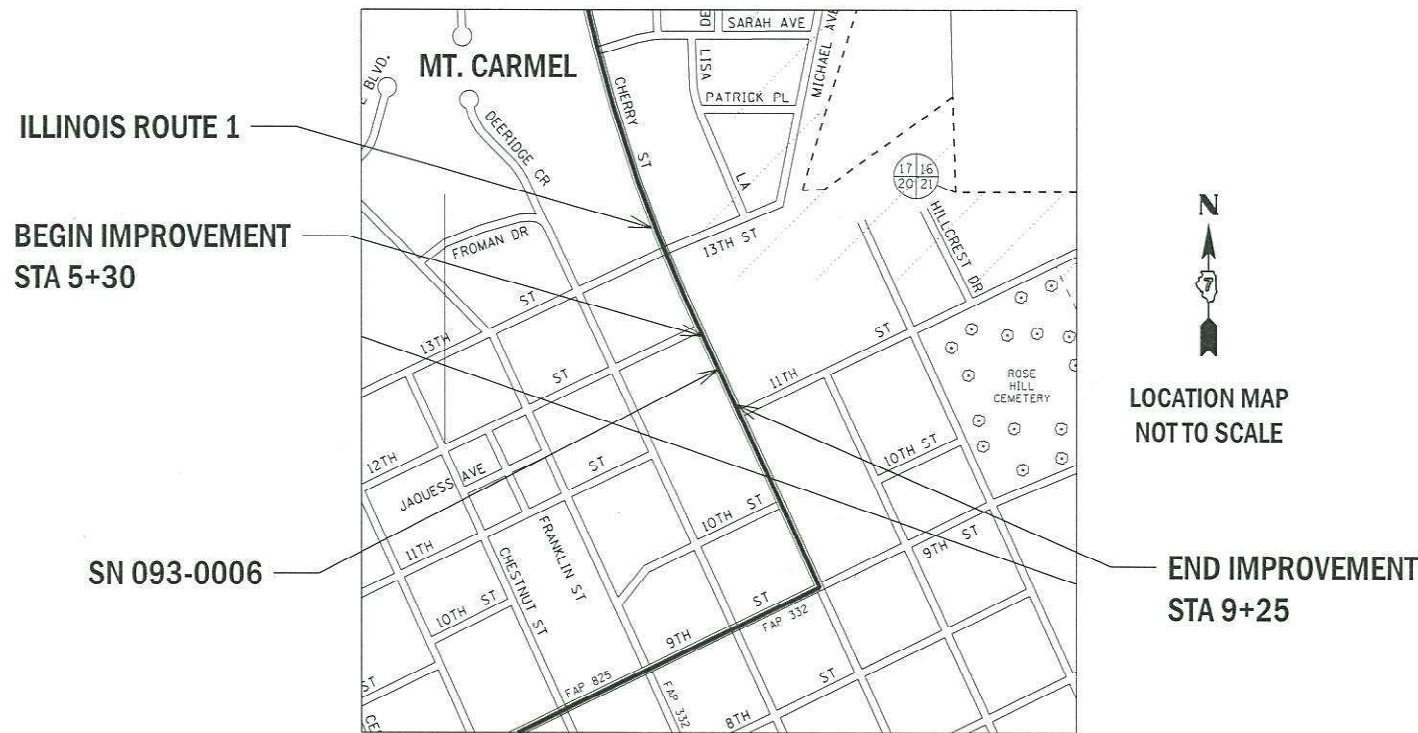
FUNCTIONAL CLASSIFICATION
OTHER PRINCIPAL ARTERIAL
2023 ADT - 5700
P.V. - 90.8% S.U. - 5.7% M.U. - 3.5%



FULL SIZE PLANS HAVE BEEN PREPARED USING STANDARD ENGINEERING SCALES. REDUCED SIZED PLANS WILL NOT CONFORM TO STANDARD SCALES. IN MAKING MEASUREMENTS ON REDUCED PLANS, THE ABOVE SCALES MAY BE USED.

J.U.L.I.E.
JOINT UTILITY LOCATION INFORMATION FOR EXCAVATION
1-800-892-0123
OR 811

PROJECT ENGINEER: BRIAN LEWIS
PROJECT MANAGER: BRANDON BAILEY /MYRA OLTMAN
PHONE: (217) 342-8360
CONTRACT NO. 74320



GROSS LENGTH = 395.0 FT. = 0.07 MILE
NET LENGTH = 395.0 FT. = 0.07 MILE

STATE OF ILLINOIS
DEPARTMENT OF TRANSPORTATION

SUBMITTED August 13, 2021
Jeffery P. Myer
REGIONAL ENGINEER

October 1, 2021
[Signature]
ENGINEER OF DESIGN AND ENVIRONMENT

October 1, 2021
Stephen M. Lewis
DIRECTOR OF HIGHWAYS PROJECT IMPLEMENTATION

PRINTED BY THE AUTHORITY
OF THE STATE OF ILLINOIS

GENERAL NOTES

THE WORK INCLUDED IN THIS SECTION CONSISTS OF REMOVAL OF THE EXISTING STRUCTURE AND FILLING IN THE ABANDONED RAILROAD CUT. THIS WORK INCLUDES THE REMOVAL OF THE EXISTING BRIDGE, EARTHWORK, PORTLAND CEMENT CONCRETE PAVEMENT, STORM SEWER, SIDEWALK, SEEDING AND ALL OTHER WORK NECESSARY TO COMPLETE THIS SECTION. A MARKED LOCAL DETOUR WILL BE UTILIZED.

PCC BASE COURSE WIDENING SHALL BE CONSTRUCTED AT THE INTERSECTION OF 1550TH BLVD AND COLLEGE DRIVE PRIOR TO THE PLACEMENT OF DETOUR SIGNING.

THE SPEED LIMIT SIGNS LOCATED AT THE STRUCTURE SHALL BE REMOVED AND RELOCATED BY THE CONTRACTOR. THIS WORK SHALL BE DONE IN ACCORDANCE TO SECTION 107.25 OF THE STANDARD SPECIFICATIONS.

ALL ELEVATIONS REFERRING TO U.S.G.S. MEAN SEA LEVEL DATUM.

ONLY THOSE TREES DESIGNATED BY THE ENGINEER OR LISTED IN THE PLANS SHALL BE REMOVED. THE CONTRACTOR SHALL PROTECT ALL REMAINING TREES FROM DAMAGE DUE TO HIS OPERATIONS.

THE LOCATIONS AND/OR DEPTHS OF UNDERGROUND UTILITIES SHOWN HAVE BEEN TAKEN FROM INFORMATION FURNISHED BY THE UTILITY OWNERS AND MUST BE CONSIDERED APPROXIMATE. THE CONTRACTOR SHALL CONTACT JULIE AT LEAST 48 HOURS PRIOR TO EXCAVATION TO DETERMINE WHICH UTILITIES ARE WITHIN THE AREA.

602401-07 PRECAST MANHOLE, TYPE A, 4' (1.22 M) DIAMTER
 602601-06 PRECAST REINFORCED CONCRETE FLAT SLAB TOP
 602701-02 MANHOLE STEPS
 604001-05 FRAME AND LIDS, TYPE 1
 604006-05 FRAME AND GRATE, TYPE 3
 667101-02 PERMANENT SURVEY MARKERS
 701426-09 LANE CLOSURE, MULTILANE, INTERMITTENT OR MOVING OPERATIONS, FOR SPEEDS >= 45 MPH

INDEX OF SHEETS

- 1 COVER SHEET
- 2 GENERAL NOTES, INDEX OF SHEETS & HIGHWAY STANDARDS
- 3-5 SUMMARY OF QUANTITIES
- 6 TYPICAL SECTIONS
- 7 SCHEDULE OF QUANTITIES
- 8 PLAN AND PROFILE SHEET
- 9 DETOUR CONSTRUCT DETAIL COLLEGE DRIVE & 1550TH BLVD
- 10 MARKED DETOUR DETAILS
- 11 EROSION CONTROL PLAN
- 12 REMOVAL PLAN
- 13 STORM SEWER PLAN
- 14 RIGHT OF WAY PLAN
- 15 TREE PLANTING LOCATIONS
- 16-24 CROSS SECTION SHEETS

THE FOLLOWING STANDARDS ARE A PART OF THESE PLANS AND ARE INCLUDED FOLLOWING THE LAST NUMBERED SHEET OF THE PLANS.

- 000001-08 STANDARD SYMBOLS, ABBREVIATIONS, AND PATTERNS
- 001001-02 AREAS OF REINFORCEMENT BARS
- 001006 DECIMAL OF AN INCH AND OF A FOOT
- 280001-07 TEMPORARY EROSION CONTROL SYSTEMS
- 420001-09 PAVEMENT JOINTS
- 420101-06 24' JOINTED PCC PAVEMENT
- 420111-04 PCC PAVEMENT ROUNDOUTS
- 420701-03 PAVEMENT WELDED WIRE REINFORCEMENT
- 542301-03 PRECAST REINFORCED CONCRETE FLARED END SECTION
- 602301-04 INLET - TYPE A
- 602306-03 INLET - TYPE B
- 606001-07 CONCRETE CURB TYPE B AND COMBINATION CURB AND GUTTER
- 666001-01 RIGHT OF WAY MARKERS
- 668001-01 METHOD OF RESETTING U.S. GEOLOGIC SURVEY AND NATIONAL GEODETIC SURVEY BENCHMARKS
- 701001-02 OFF-RD OPERATIONS 2L, 2W, MORE THAN 15' AWAY
- 701006-05 OFF-RD OPERATIONS, MULTILANE MORE THAN 15' AWAY
- 701311-03 LANE CLOSURE 2L, 2W MOVING OPERATIONS - DAY ONLY
- 701326-04 LANE CLOSURE 2L, 2W , PAVEMENT WIDENING, FOR SPEED ≥ 45 MPH
- 701501-06 URBAN LANE CLOSURE 2L, 2W, UNDIVIDED
- 701701-10 URBAN LANE CLOSURE MULTILANE INTERSECTION
- 701801-06 SIDEWALK, CORNER OR CROSSWALK CLOSURE
- 701901-08 TRAFFIC CONTROL DEVICES
- 720011-01 METAL POSTS FOR SIGNS, MARKERS AND DELINEATORS
- 720001-01 SIGN PANEL MOUNTING DETAILS
- 720006-04 SIGN PANEL ERECTION DETAILS
- 780001-05 TYPICAL PAVEMENT MARKINGS
- BLR-21-9 TYPICAL APPLICATION OF TRAFFIC CONTROL DEVICES FOR CONSTRUCTION OF RURAL LOCAL HIGHWAYS

REV. - MS

Model: Default
 File: Main.dwg
 Plot: Plot.dwg
 User: steffennrk
 Date: 8/13/2021
 Project: 74320\CAD\Drawings\DOT Offices\District: 7\Projects\74320\CAD\Drawings\74320-01-01-01.dwg

	USERNAME = steffennrk DESIGNED - DRAWN - PLOT SCALE = 40.0000' / in. CHECKED - PLOT DATE = 8/13/2021 DATE -	REVISED - REVISED - REVISED - REVISED -	STATE OF ILLINOIS DEPARTMENT OF TRANSPORTATION	GENERAL NOTES, INDEX OF SHEETS AND HIGHWAY STANDARDS	SCALE: SHEET OF SHEETS STA. TO STA.	F.A.P. RTE. 332 SECTION (12VR,2B)B COUNTY WABASH TOTAL SHEETS 24 SHEET NO. 2 CONTRACT NO. 74320 ILLINOIS FED. AID PROJECT
--	---	--	--	--	-------------------------------------	---

80% FED
20% STATE
URBAN

80% FED
20% STATE
URBAN

SUMMARY OF QUANTITIES			TOTAL QUANTITIES	CONSTRUCTION TYPE CODE		
CODE NO	ITEM	UNIT		0010		
60218400	MANHOLES, TYPE A, 4' -DIAMETER, TYPE 1 FRAME, CLOSED LID	EACH	2	2		
60235700	INLETS, TYPE A, TYPE 3 FRAME AND GRATE	EACH	1	1		
60240220	INLETS, TYPE B, TYPE 3 FRAME AND GRATE	EACH	3	3		
60500060	REMOVING INLETS	EACH	4	4		
60605000	COMBINATION CONCRETE CURB AND GUTTER, TYPE B-6.24	FOOT	750	750		
60605500	COMBINATION CONCRETE CURB AND GUTTER, TYPE B-6.24 (VARIABLE WIDTH GUTTER FLAG)	FOOT	40	40		
66600105	FURNISHING AND ERECTING RIGHT OF WAY MARKERS	EACH	12	12		
67000400	ENGINEER'S FIELD OFFICE, TYPE A	CAL MO	4	4		
67000600	ENGINEER'S FIELD LABORATORY	CAL MO	4	4		
67100100	MOBILIZATION	L SUM	1	1		
70100500	TRAFFIC CONTROL AND PROTECTION, STANDARD 701326	L SUM	1	1		

SUMMARY OF QUANTITIES			TOTAL QUANTITIES	CONSTRUCTION TYPE CODE		
CODE NO	ITEM	UNIT		0010		
70102620	TRAFFIC CONTROL AND PROTECTION, STANDARD 701501	L SUM	1	1		
70102635	TRAFFIC CONTROL AND PROTECTION, STANDARD 701701	L SUM	1	1		
70102640	TRAFFIC CONTROL AND PROTECTION, STANDARD 701801	L SUM	1	1		
70107025	CHANGEABLE MESSAGE SIGN	CAL DA	28	28		
* 78004210	PREFORMED PLASTIC PAVEMENT MARKING, TYPE B - INLAID - LINE 4"	FOOT	99	99		
* A2001016	TREE, ACER RUBRUM (RED MAPLE), 2" CALIPER, BALLED AND BURLAPPED	EACH	38	38		
* A2001716	TREE, ACER SACCHARUM (SUGAR MAPLE), 2" CALIPER, BALLED AND BURLAPPED	EACH	37	37		
* A2006516	TREE, QUERCUS BICOLOR (SWAMP WHITE OAK), 2" CALIPER, BALLED AND BURLAPPED	EACH	16	16		
* A2007116	TREE, QUERCUS RUBRA (RED OAK), 2" CALIPER, BALLED AND BURLAPPED	EACH	21	21		
* B2001116	TREE, CERCIS CANADENSIS (EASTERN REDBUD), 2" CALIPER, TREE FORM, BALLED AND BURLAPPED	EACH	46	46		

* SPECIALTY ITEM

REV. - MS

MODEL: Default
 FILE: \\wbl\et-pw-bentley.com\p\11001\Documents\DOT_Offices\District_7\Projects\74320\CADD\Drawings\Sheet\74320-eh-S00.dgn

USER NAME = steffemk	DESIGNED -	REVISED -
PLOT SCALE = 100.0000' / in.	DRAWN -	REVISED -
PLOT DATE = 8/13/2021	CHECKED -	REVISED -
	DATE -	REVISED -

STATE OF ILLINOIS
DEPARTMENT OF TRANSPORTATION

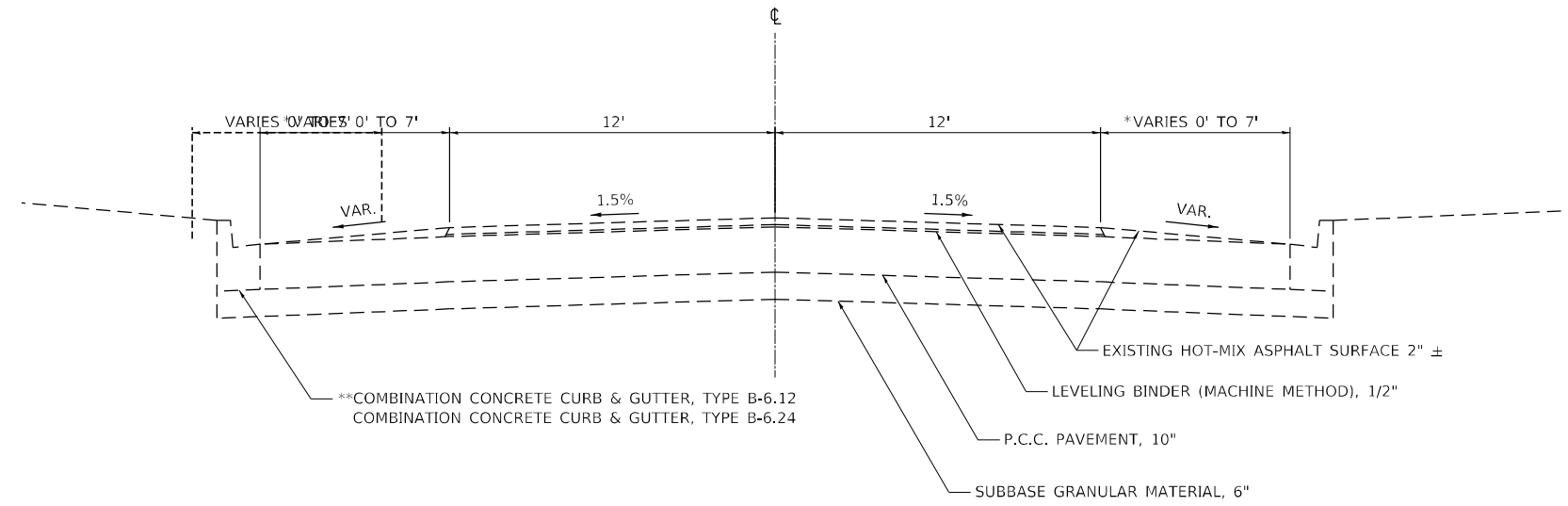
SUMMARY OF QUANTITIES

SCALE: SHEET OF SHEETS STA. TO STA.

F.A.P. RTE.	SECTION	COUNTY	TOTAL SHEETS	SHEET NO.
332	(12VR2B)B	WABASH	24	4
ILLINOIS FED. AID PROJECT			CONTRACT NO. 74320	

EXISTING TYPICAL SECTION

STA. 5+30 TO STA. 9+25
BRIDGE OMISSION STA. 6+30 TO STA. 8+43

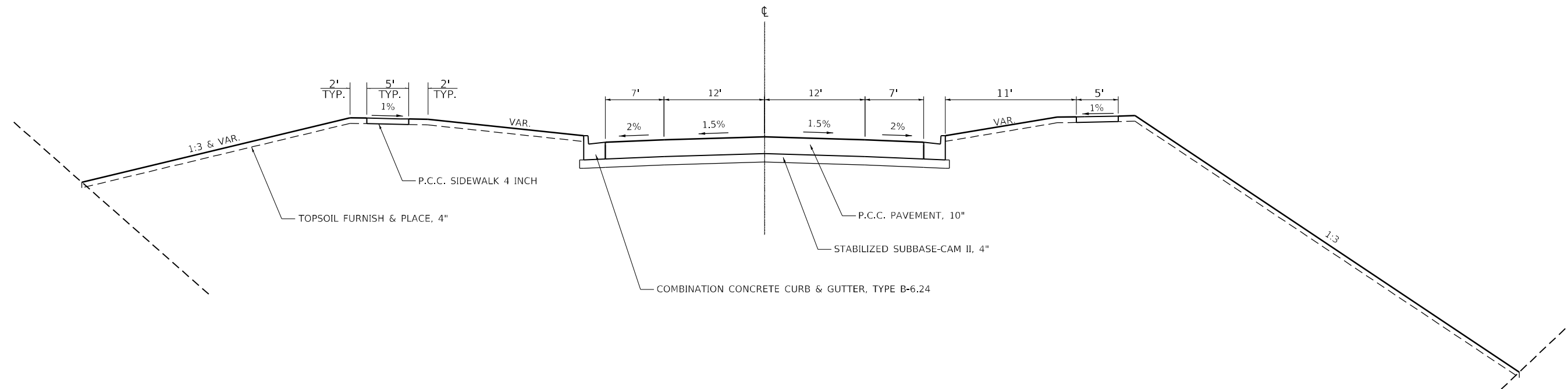


*STA. 5+30 TO STA. 5+70 = 7'
STA. 5+70 TO STA. 6+04 = 7' TO 0'
STA. 6+04 TO STA. 6+30 = 0'
STA. 8+43 TO STA. 8+68 = 0'
STA. 8+68 TO STA. 9+03 = 0' TO 7'
STA. 9+03 TO STA. 9+25 = 7'

**COMBINATION CONCRETE CURB & GUTTER TRANSITIONS FROM TYPE B-6.12 TO TYPE B-6.24 WHEN THE ROADWAY WIDTH BECOMES 24'.

PROPOSED TYPICAL SECTION

STA. 5+30 TO STA. 9+25



MODEL: Default
FILE NAME: p:\project-cw-beadwy.com\FW\DOT\Documents\DOT Office\District 7\Projects\74320\CADD\Bridges\CAD\sheet\074320-12-typical.dgn

USER NAME = steffenmk	DESIGNED -	REVISED -
	DRAWN -	REVISED -
PLOT SCALE = 100,0000' / in.	CHECKED -	REVISED -
PLOT DATE = 8/13/2021	DATE -	REVISED -

**STATE OF ILLINOIS
DEPARTMENT OF TRANSPORTATION**

TYPICAL SECTIONS	
SCALE:	SHEET OF SHEETS STA. TO STA.

F.A.P. RTE.	SECTION	COUNTY	TOTAL SHEETS	SHEET NO.
332	(12VR,2B)B	WABASH	24	6
ILLINOIS FED. AID PROJECT			CONTRACT NO. 74320	

PAVEMENT MARKING SCHEDULE				
STATION	TO	STATION	FOOT	FOOT
5+30	TO	9+25	99	99
TOTAL			99	99

PCC SIDEWALK 4 INCH				
STATION	TO	STATION	SIDE	SQ FT
5+30	TO	9+25	LT	1782
6+08	TO	9+00	RT	1413
TOTAL				3195

CURB & GUTTER SCHEDULE					
STATION	TO	STATION	SIDE	COMBINATION CONCRETE CURB & GUTTER, TYPE B 6.24 FOOT	COMBINATION CONCRETE CURB AND GUTTER, TYPE B 6.24 (VARIABLE) FOOT
5+30	TO	5+40	LT		10
5+40	TO	9+15	LT	375	
9+15	TO	9+25	LT		10
5+30	TO	5+40	RT		10
5+40	TO	9+15	RT	375	
9+15	TO	9+25	RT		10
TOTAL				750	40

PROTECTING OR RESETTING SURVEY MARKERS		
STATION	OFFSET	EACH
5+22.24 (IP)	47.26' RT	1
6+19.19 (IP)	47.23' RT	1
6+22.13 (IP)	47.26' RT	1
7+88.10 (IP)	49.40' LT	1
TOTAL =		4

FURNISHING AND ERECTING RIGHT OF WAY MARKERS	
STATION	OFFSET
5+91.14	56.00' LT
5+98.04	47.50' LT
6+17.00	154.00' LT
6+52.00	154.00' LT
7+77.28	72.00' LT
7+96.77	47.50' LT
6+74.29	47.50' RT
6+89.73	67.00' RT
8+11.00	154.00' RT
8+52.37	47.50' RT
8+57.00	154.00' RT
8+77.58	80.00' RT

PAVEMENT SCHEDULE					
STATION	TO	STATION	STABILIZED SUBBASE - CEMENT - AGGREGATE MIXTURE II, 4" SQ YD	WELDED WIRE REINFORCEMENT SQ YD	PORTLAND CEMENT CONCRETE PAVEMENT 10" SQ YD
5+30	TO	9+25	1712	1668	1668
COLLEGE DR. & 1550TH BLVD				186*	
TOTAL			1712	1854	1668

* SEE CONSTRUCT NOTE ON SHEET 9

EARTHWORK SCHEDULE						
STATION	TO	STATION	EARTH EXCAVATION (CU YD)	EARTH EX ADJ FOR SHRINKAGE (CU YD)	EMBANKMENT (CU YD)	EARTHWORK BALANCE WASTE (+) OR SHORTAGE (-) (CU YD)
5+30	TO	9+25	573	430	21700	-21270
TOTALS					21700	-21270

TEMPORARY PAVEMENT MARKING SCHEDULE			
	TEMPORARY PAVEMENT MARKING LETTERS AND SYMBOLS	TEMPORARY PAVEMENT MARKING - LINE 4"	TEMPORARY PAVEMENT MARKING - LINE 24"
	SQ FT	FOOT	FOOT
IL 15/IL 1	38.4	379	21.4
MARKET ST	38.4	414	19.5
TOTAL	76.8	793	40.9

PAVEMENT MARKING BLACKOUT TAPE - 12"			
	NUMBERS	SQ FT/EACH	FEET
ARROWS	3	20	60
ONLY	1	48	54
TOTAL			114

SHORT TERM PAVEMENT MARKING REMOVAL		
TOTAL	537	SQ FT

THESE SCHEDULES ARE INCLUDED FOR INFORMATION ONLY.
THE ABOVE PAY ITEMS ARE INCLUDED IN THE PAY ITEM:
TRAFFIC CONTROL AND PROTECTION FOR TEMPORARY DETOUR
AND WILL NOT BE PAID FOR SEPARATELY

MODEL: Default
FILE NAME: p:\ulidest-pw-beadefy.com\FW\DOT\Documents\DOT_offices\District_7\Projects\74320\CADD\Bids\CAD\sheet\074320-1p1-Schedule.dgn

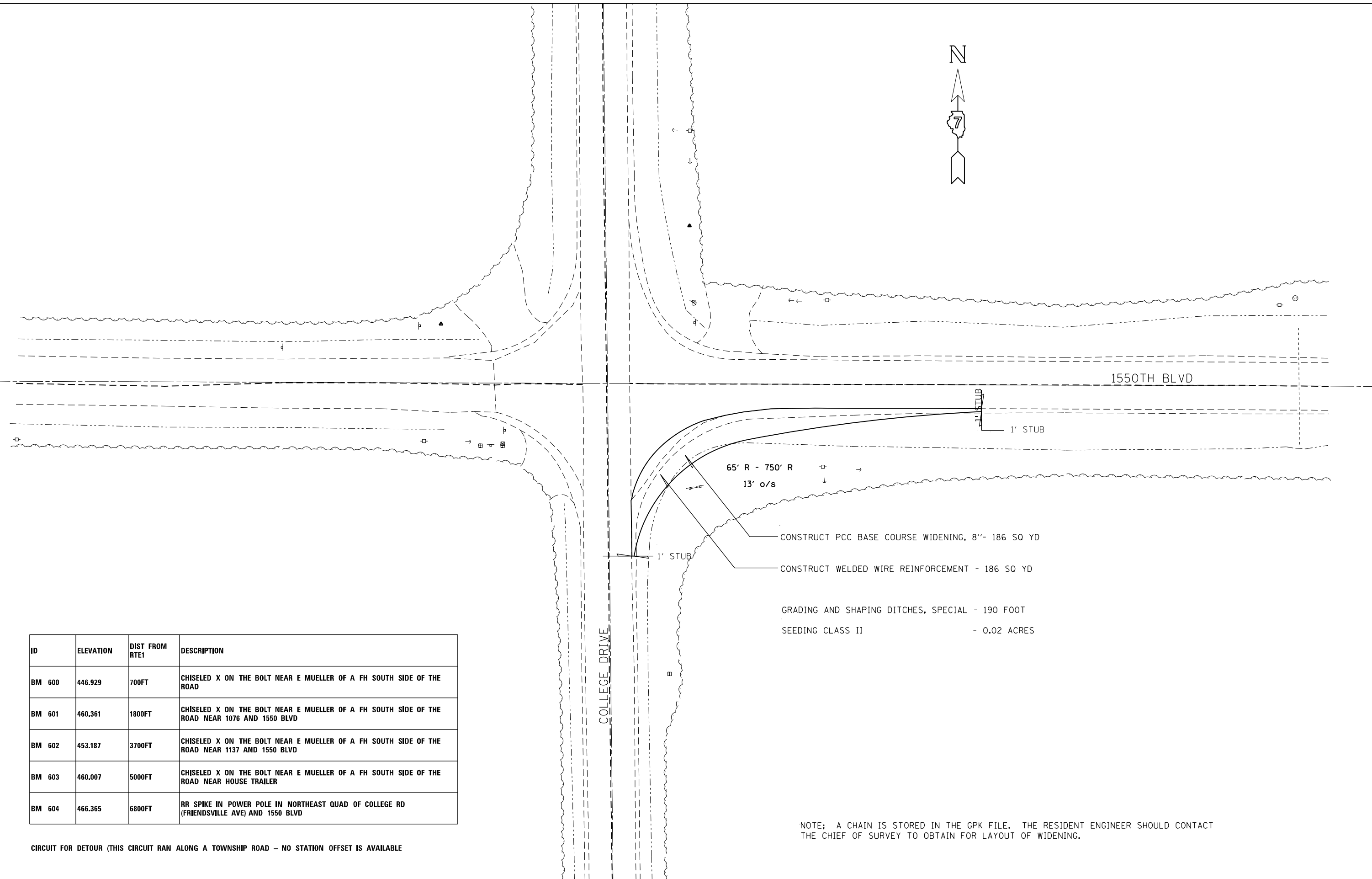
USER NAME = stefenmk	DESIGNED -	REVISED -
	DRAWN -	REVISED -
PLOT SCALE = 40,0000 */ in.	CHECKED -	REVISED -
PLOT DATE = 8/13/2021	DATE -	REVISED -

STATE OF ILLINOIS
DEPARTMENT OF TRANSPORTATION

SCHEDULE OF QUANTITIES

SCALE: SHEET OF SHEETS STA. TO STA.

F.A.P. RTE.	SECTION	COUNTY	TOTAL SHEETS	SHEET NO.
332	(12VR,2B)B	WABASH	24	7
			CONTRACT NO. 74320	
		ILLINOIS	FED. AID PROJECT	



ID	ELEVATION	DIST FROM RTE1	DESCRIPTION
BM 600	446.929	700FT	CHISELED X ON THE BOLT NEAR E MUELLER OF A FH SOUTH SIDE OF THE ROAD
BM 601	460.361	1800FT	CHISELED X ON THE BOLT NEAR E MUELLER OF A FH SOUTH SIDE OF THE ROAD NEAR 1076 AND 1550 BLVD
BM 602	453.187	3700FT	CHISELED X ON THE BOLT NEAR E MUELLER OF A FH SOUTH SIDE OF THE ROAD NEAR 1137 AND 1550 BLVD
BM 603	460.007	5000FT	CHISELED X ON THE BOLT NEAR E MUELLER OF A FH SOUTH SIDE OF THE ROAD NEAR HOUSE TRAILER
BM 604	466.365	6800FT	RR SPIKE IN POWER POLE IN NORTHEAST QUAD OF COLLEGE RD (FRIENDSVILLE AVE) AND 1550 BLVD

CIRCUIT FOR DETOUR (THIS CIRCUIT RAN ALONG A TOWNSHIP ROAD - NO STATION OFFSET IS AVAILABLE)

- CONSTRUCT PCC BASE COURSE WIDENING, 8'-186 SQ YD
- CONSTRUCT WELDED WIRE REINFORCEMENT - 186 SQ YD
- GRADING AND SHAPING DITCHES, SPECIAL - 190 FOOT
- SEEDING CLASS II - 0.02 ACRES

NOTE: A CHAIN IS STORED IN THE GPK FILE. THE RESIDENT ENGINEER SHOULD CONTACT THE CHIEF OF SURVEY TO OBTAIN FOR LAYOUT OF WIDENING.

MODEL: Default
 FILE NAME: p:\project-aw-beachy.com\p\11\DOT\Documents\DOT Office\Drawings\11\Projects\74320\CADD\Drawings\CADD\Sheet\74320-11-11-2021-11-11-2021.dwg
 PROJECT: 74320\CADD\Drawings\CADD\Sheet\74320-11-11-2021-11-11-2021.dwg

USER NAME = steffemk	DESIGNED -	REVISED -
	DRAWN -	REVISED -
PLOT SCALE = 40,0000 * / in.	CHECKED -	REVISED -
PLOT DATE = 8/13/2021	DATE -	REVISED -

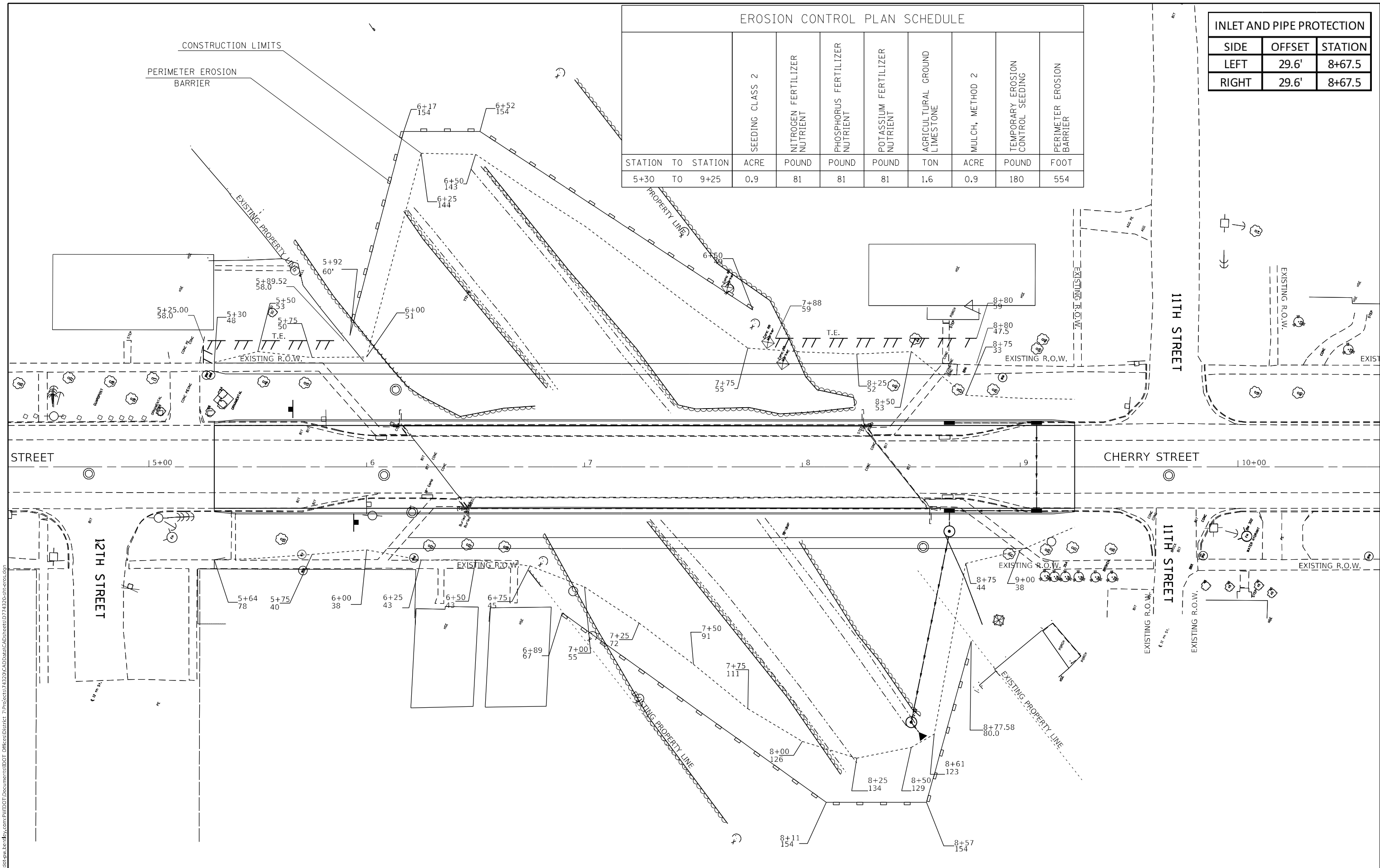
**STATE OF ILLINOIS
DEPARTMENT OF TRANSPORTATION**

**DETOUR CONSTRUCT DETAIL
COLLEGE DRIVE & 1550TH BLVD**

SCALE: SHEET OF SHEETS STA. TO STA.

F.A.P. RTE.	SECTION	COUNTY	TOTAL SHEETS	SHEET NO.
332	(12VR,2B)B	WBASH	24	9
ILLINOIS FED. AID PROJECT			CONTRACT NO. 74320	

MODEL: Default
 FILE NAME: p:\project-cw-bead\paw.com\p\w\DOT\Documents\DOT Office\Drawings\74320\CADD\Drawings\74320-11-11-2021.dwg



EROSION CONTROL PLAN SCHEDULE								
STATION TO STATION	ACRE	NITROGEN FERTILIZER POUND	PHOSPHORUS FERTILIZER POUND	POTASSIUM FERTILIZER POUND	AGRICULTURAL GROUND LIMESTONE TON	MULCH, METHOD 2 ACRE	TEMPORARY EROSION CONTROL SEEDING POUND	PERIMETER EROSION BARRIER FOOT
5+30 TO 9+25	0.9	81	81	81	1.6	0.9	180	554

INLET AND PIPE PROTECTION		
SIDE	OFFSET	STATION
LEFT	29.6'	8+67.5
RIGHT	29.6'	8+67.5

CONSTRUCTION LIMITS
 PERIMETER EROSION BARRIER

STATE OF ILLINOIS
 DEPARTMENT OF TRANSPORTATION

EROSION PLANS AND SCHEDULES
 SCALE: SHEET 1 OF 1 SHEETS STA. 5+30 TO STA. 9+25

F.A.P. RTE.	SECTION	COUNTY	TOTAL SHEETS	SHEET NO.
332	(12VR,2B)B	WABASH	24	11
CONTRACT NO. 74320				
ILLINOIS FED. AID PROJECT				

USER NAME = stefenmk	DESIGNED -	REVISED -
PLOT SCALE = 40,0000 * / in.	DRAWN -	REVISED -
PLOT DATE = 8/13/2021	CHECKED -	REVISED -
	DATE -	REVISED -

REMOVAL PAY ITEMS			
STATION TO STATION	PAVEMENT REMOVAL SQ YD	STRUCTURE REMOVAL EACH	APPROACH SLAB REMOVAL SQ YD
5+30 TO 6+00.5	235.5		
6+00.5 TO 6+31.5			83
6+31.5 TO 8+42.5		1	
8+42.5 TO 9+25			83
8+42.6 TO 9+25	235.5		
TOTALS	471	1	166

STORM SEWER REMOVAL	
STATION TO STATION	STORM SEWER REMOVAL, 18" FOOT
6+07 TO 6+50	118
7+95 TO 8+65	112
TOTALS	230

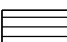

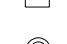
TREE REMOVAL	
QUADRANT	ACRES
NE	0.09
NW	0.1
SE	0.1
SW	0.08
TOTAL	0.37

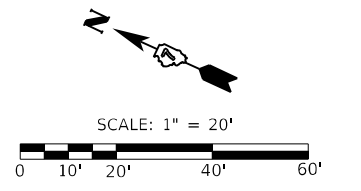
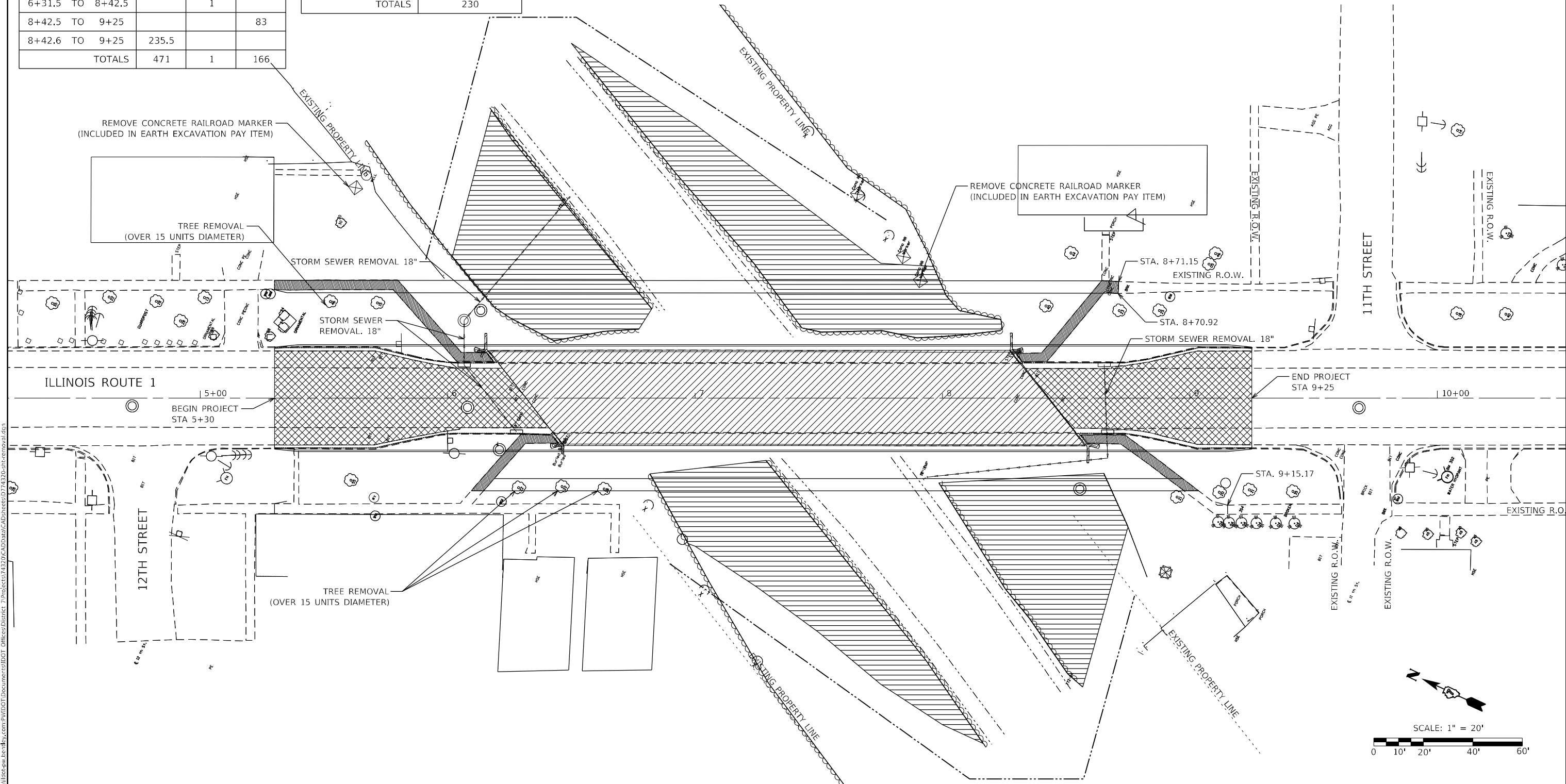
COMBINATION CURB & GUTTER REMOVAL				
QUADRANT	STATION	TO	STATION	FOOT
NW	5+30	TO	6+41.62	112
NE	5+30	TO	6+18.82	89
SW	8+55.44	TO	9+25	70
SE	8+32.77	TO	9+25.8	93
TOTAL			TOTAL	365

SIDEWALK REMOVAL	
QUADRANT	SQ FT
NW	148
NE	373
SW	188
SE	208
TOTAL	917

INLET REMOVAL		
SIDE	STATION	FOOT
LT	6+06	1
RT	6+28	1
LT	8+65	1
RT	8+67	1
TOTAL	TOTAL	4

REMOVAL LEGEND

-  SIDEWALK REMOVAL
-  PAVEMENT & APPROACH PAVEMENT REMOVAL
-  TREE REMOVAL
-  STRUCTURE REMOVAL
-  COMB. CONC. CURB & GUTTER REMOVAL
-  INLET REMOVAL
-  MANHOLE REMOVAL



MODEL: Default
 FILE NAME: p:\uldest-pw-becad\paw.com\PIV\DOT\Documents\DOT Office\Director_7\Projects\74320\CADD\paw\CAD\paw\74320-rlt-reposal.dgn
 PROJECT: 74320\CADD\paw\CAD\paw\74320-rlt-reposal.dgn

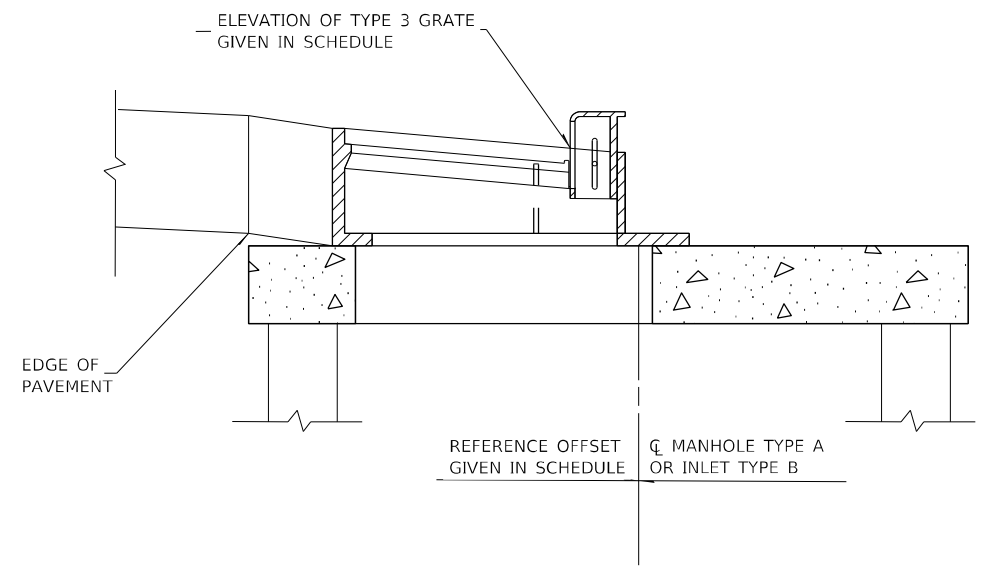
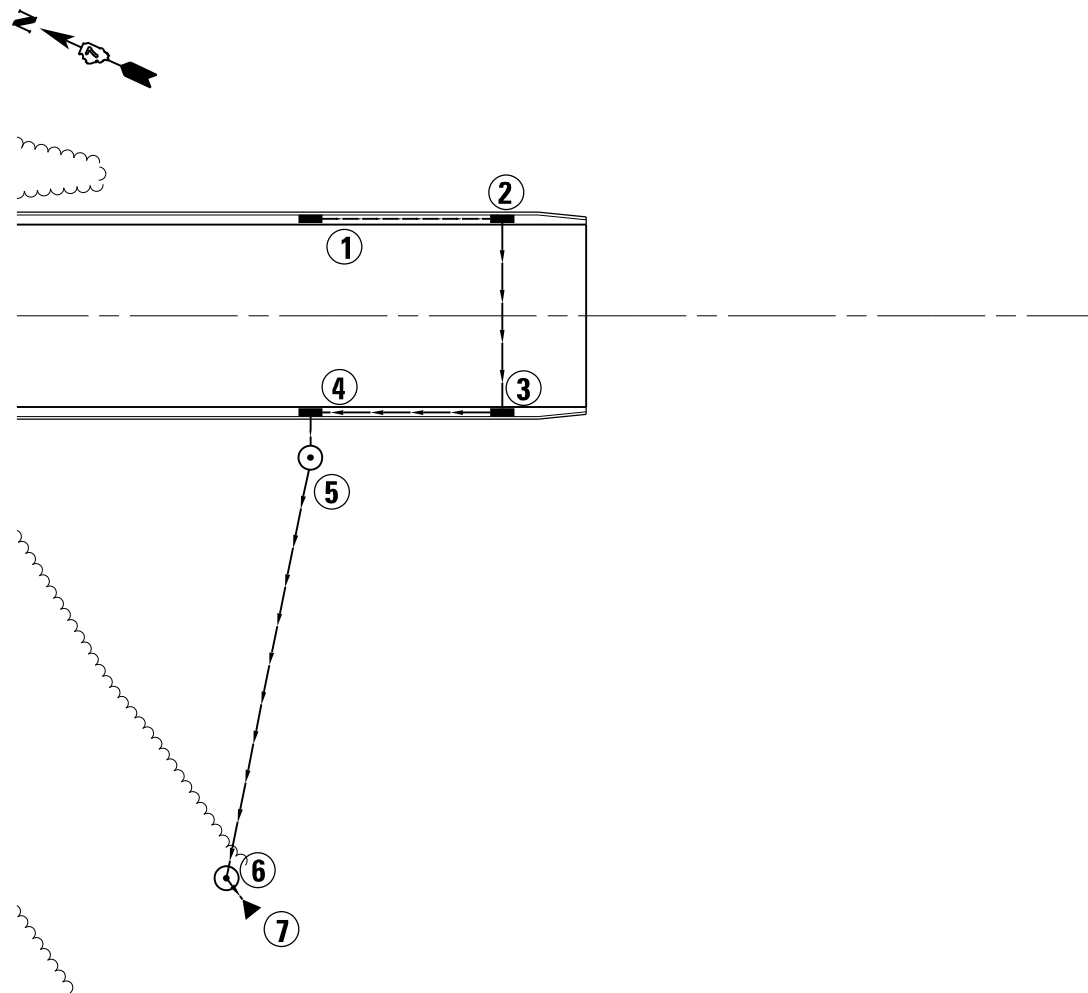
USER NAME = steffenmk	DESIGNED -	REVISED -
PLOT SCALE = 40,0000 * / in.	DRAWN -	REVISED -
PLOT DATE = 8/13/2021	CHECKED -	REVISED -
	DATE -	REVISED -

**STATE OF ILLINOIS
DEPARTMENT OF TRANSPORTATION**

REMOVAL PLANS AND SCHEDULES

SCALE: SHEET OF SHEETS STA. TO STA.

F.A.P. RTE. 332	SECTION (12VR,2B)B	COUNTY WABASH	TOTAL SHEETS 24	SHEET NO. 12
CONTRACT NO. 74320				
ILLINOIS FED. AID PROJECT				



TYPE 3 FRAME & GRATE WITH INLET - TYPE B OR MANHOLE TYPE A

INLET SCHEDULE						
PT	LOCATION	DESCRIPTION	LID OR GRATE	INLET INVERT	OUTLET INVERT	SYM
1	21.2' LT STA 8+67.5	INLETS TA T3F&G	461.23	458.20	458.10	■
2	21.2' LT STA 9+07.5	INLETS TB T3F&G	461.12	457.72	457.62	■
3	21.2' RT STA 9+07.5	INLETS TB T3F&G	461.12	457.22	457.12	■
4	21.2' RT STA 8+67.5	INLETS TB T3F&G	461.23	456.74	456.64	■
5	30' RT STA 8+67.5	MAN TA 4 DIA T1F CL	462.18	456.58	456.48	⊙
6	117' RT STA 8+50	MAN TA 4 DIA T1F CL	440.10	437.00	432.10	⊙
7	124' RT STA 8+55	PRC FLAR END SEC 15			432.00	▶

PIPE SCHEDULE		
PT. TO PT.	TYPE 1 15"	TRENCH BACKFILL
	LIN FT	CU YD
1-2	38	7.2
2-3	40	8.0
3-4	38	11.6
4-5	6	
5-6	90	
6-7	6	
TOTALS	218	26.8

MODEL: Default
 FILE NAME: p:\ulidect-pw-beadefy.com\FW\DOT\Documents\DOT Office\Director_T\Projects\74320\CADD\Bldg\CAD\sheet\074320-13-SS.dgn

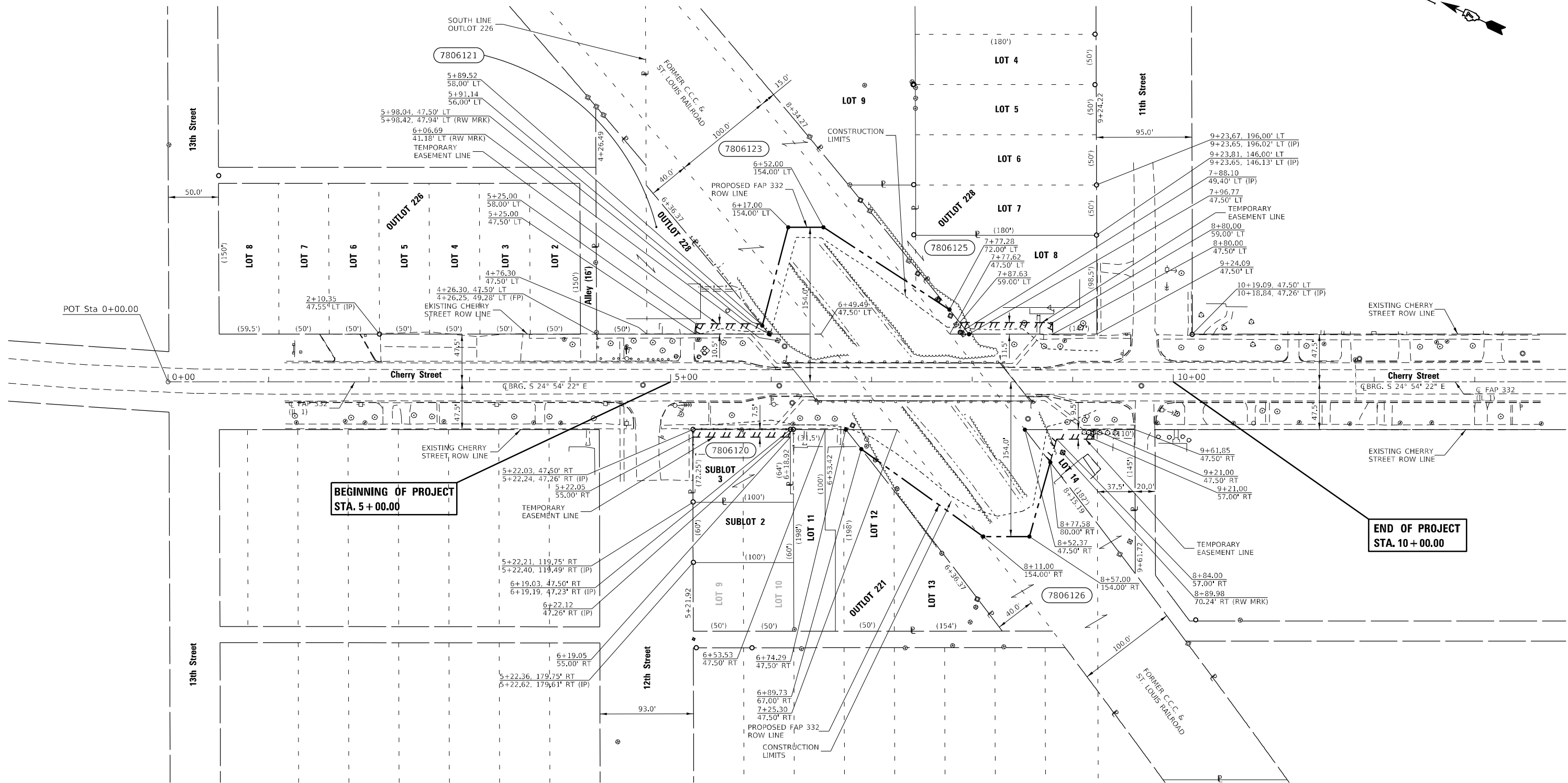
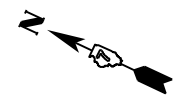
USER NAME = stefenmk	DESIGNED -	REVISED -
	DRAWN -	REVISED -
PLOT SCALE = 40,0000 */ in.	CHECKED -	REVISED -
PLOT DATE = 8/13/2021	DATE -	REVISED -

STATE OF ILLINOIS
DEPARTMENT OF TRANSPORTATION

STORM SEWER LOCATION AND DETAILS			
STORM SEWER SCHEDULE			
SCALE:	SHEET	OF SHEETS	STA. TO STA.

F.A.P. RTE.	SECTION	COUNTY	TOTAL SHEETS	SHEET NO.
332	(12VR,2B)B	WABASH	24	13
			CONTRACT NO. 74320	
ILLINOIS FED. AID PROJECT				

T.1S.-R.12W., 2nd P.M., MOUNT CARMEL TWP.



**BEGINNING OF PROJECT
STA. 5 + 00.00**

**END OF PROJECT
STA. 10 + 00.00**

- - EXISTING IRON PIN
- ▲ - EXISTING STONE
- - SET IRON PIN
- - EXISTING NAIL
- ⊠ - EXISTING R.O.W. MARKER
- ⊙ - EXISTING FENCE POST
- ⊞ - EXISTING CONCRETE POST
- (R) RECORDED DISTANCE

NOTE:
BEARINGS ARE REFERENCED TO THE
ILLINOIS STATE PLANE COORDINATE
SYSTEM EAST ZONE DATUM OF 1983(11)
TEMPORARY EASEMENTS NEEDED FOR A
WORK AREA

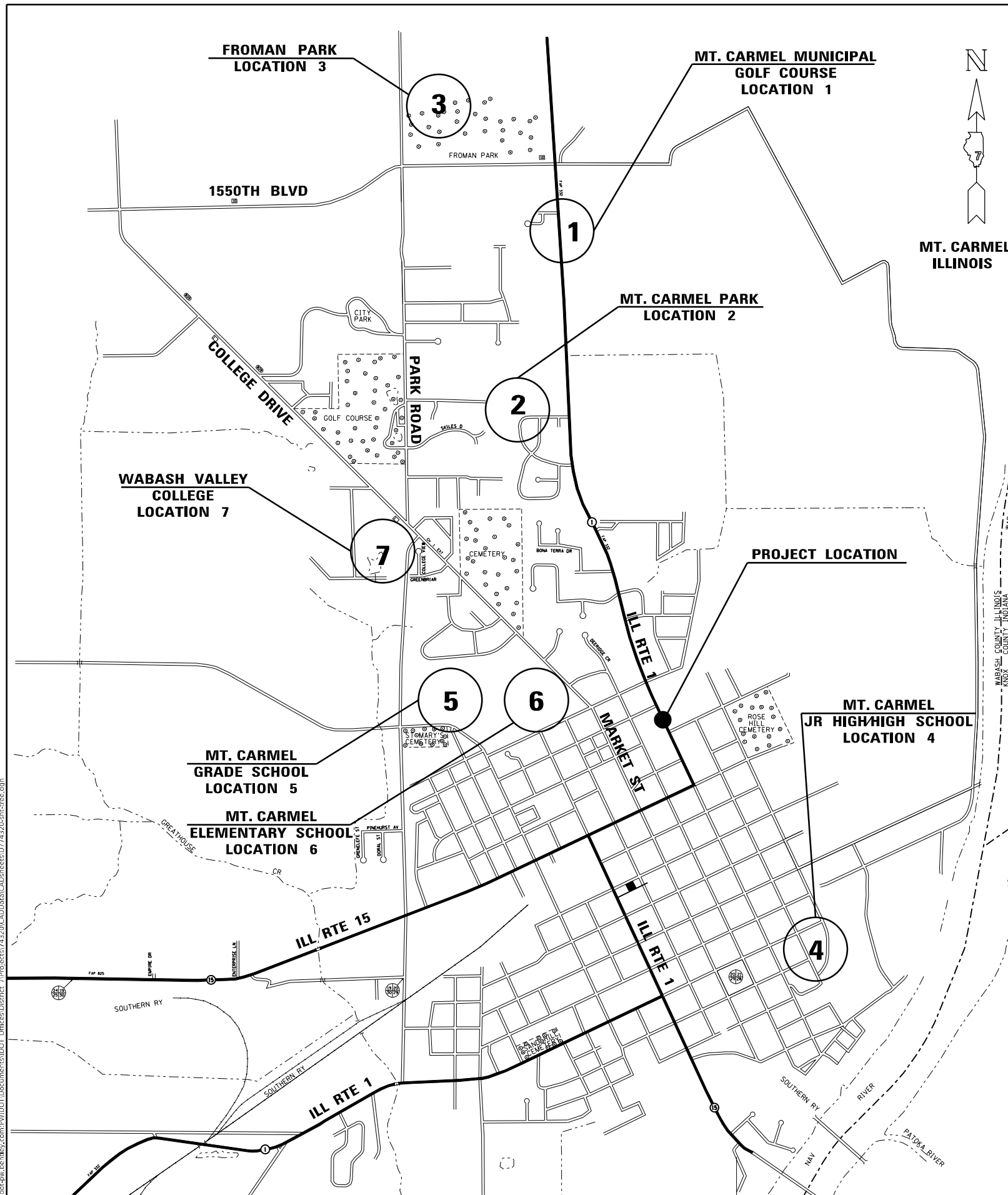
PARCEL	OWNER	AREA TAKEN		EASEMENT	REM. AREA	INST	RECORDED			EXCESS	
		ADD	EXIST				MICRO FILM NO.	DATE	BOOK	PAGE	AREA
7806120	ROBERT K. & LORA R. CUNNINGHAM			728 SQ. FT.							
7806121	MICHAEL J. EVANS			722 SQ. FT.							
7806123	ERIC W. HELTON, LIFE ESTATE IN JACK R. HELTON	19703 SQ. FT.	0 SQ. FT.		40426 SQ. FT.						
7806125	LARRY M. AND BRENNNA KAY CROOKS			1010 SQ. FT.							
7806126	ERIC W. HELTON AND JACK R. HELTON	13710 SQ. FT.	0 SQ. FT.	896 SQ. FT.	47899 SQ. FT.						

MODEL: Default
 FILE NAME: p:\project-743220\CADD\DATA\CAD\sheet\DOT Office\Sheet 2\Project\743220\CADD\DATA\CAD\sheet\DOT Office\Sheet 2\Project\743220\ch-rw.rvt.dgn

USER NAME = stefenmk	DESIGNED - JMD	REVISED -
	DRAWN - JMD	REVISED -
PLOT SCALE = 100,0000' / in.	CHECKED - JMD	REVISED -
PLOT DATE = 8/13/2021	DATE - 06/07/2019	REVISED -

**STATE OF ILLINOIS
DEPARTMENT OF TRANSPORTATION**

RIGHT OF WAY PLANS			
PROJECT NHPP-41P9(977)	JOB NO. R-97-006-18	F.A.P. RTE. 332	SECTION (12VR, 28)B
SCALE: 1" = 50'	SHEET 2 OF 2 SHEETS	STA. 0+00 TO STA. 13+00	COUNTY WABASH
		TOTAL SHEETS 24 SHEET NO. 14	
		CONTRACT NO. 74320	
		FED. ROAD DIST. NO. ILLINOIS FED. AID PROJECT	



TREE PLANTING LOCATION SCHEDULE								
	MT. CARMEL MUNICIPAL GOLF COURSE LOCATION 1	MT. CARMEL PARK LOCATION 2	LAKE FROMAN PARK LOCATION 3	MT. CARMEL JR HIGH/HIGH SCHOOL LOCATION 4	MT. CARMEL GRADE SCHOOL LOCATION 5	MT. CARMEL ELEMENTARY SCHOOL LOCATION 6	WABASH VALLEY COLLEGE LOCATION 7	TOTAL
TREE SPECIES AND SIZE	EACH	EACH	EACH	EACH	EACH	EACH	EACH	EACH
TREE, ACER RUBRUM (RED MAPLE), 2" CALIPER, BALLED AND BURLAPPED		1	15	10	5	2	5	38
TREE, ACER SACCHARUM (SUGAR MAPLE), 2" CALIPER, BALLED AND BURLAPPED		1	15	9		2	10	37
TREE, QUERCUS BICOLOR (SWAMP WHITE OAK), 2" CALIPER, BALLED AND BURLAPPED		1	15					16
TREE, QUERCUS RUBRA (RED OAK), 2" CALIPER, BALLED AND BURLAPPED		1	15		5			21
TREE, CERCIS CANADENSIS (EASTERN REDBUD), 2" CALIPER, TREE FORM, BALLED AND BURLAPPED	15	1	15			10	5	46
SHRUB, CORNUS SERICEA ISANTI (ISANTI REDOSIER DOGWOOD), 3' CONTAINER		1					5	6

A LIST OF CONTACTS OF INDIVIDUALS WILL BE PROVIDED TO THE RESIDENT ENGINEER. THESE LOCAL CONTACTS WILL PROVIDE STAKED TREE PLACEMENT LOCATIONS.

MODEL: Default
 FILE NAME: p:\w\dot\paw\beadefy.com\PIV\DOT\Documents\DOT_Offices\Director_T\Projects\74320\CADD\BalsCAD\sheet\074320-tp-tree.dgn
 PROJECT: 74320\CADD\BalsCAD\sheet\074320-tp-tree.dgn

USER NAME = steffemk	DESIGNED -	REVISED -
	DRAWN -	REVISED -
PLOT SCALE = 40,0000 * / in.	CHECKED -	REVISED -
PLOT DATE = 8/13/2021	DATE -	REVISED -

STATE OF ILLINOIS
DEPARTMENT OF TRANSPORTATION

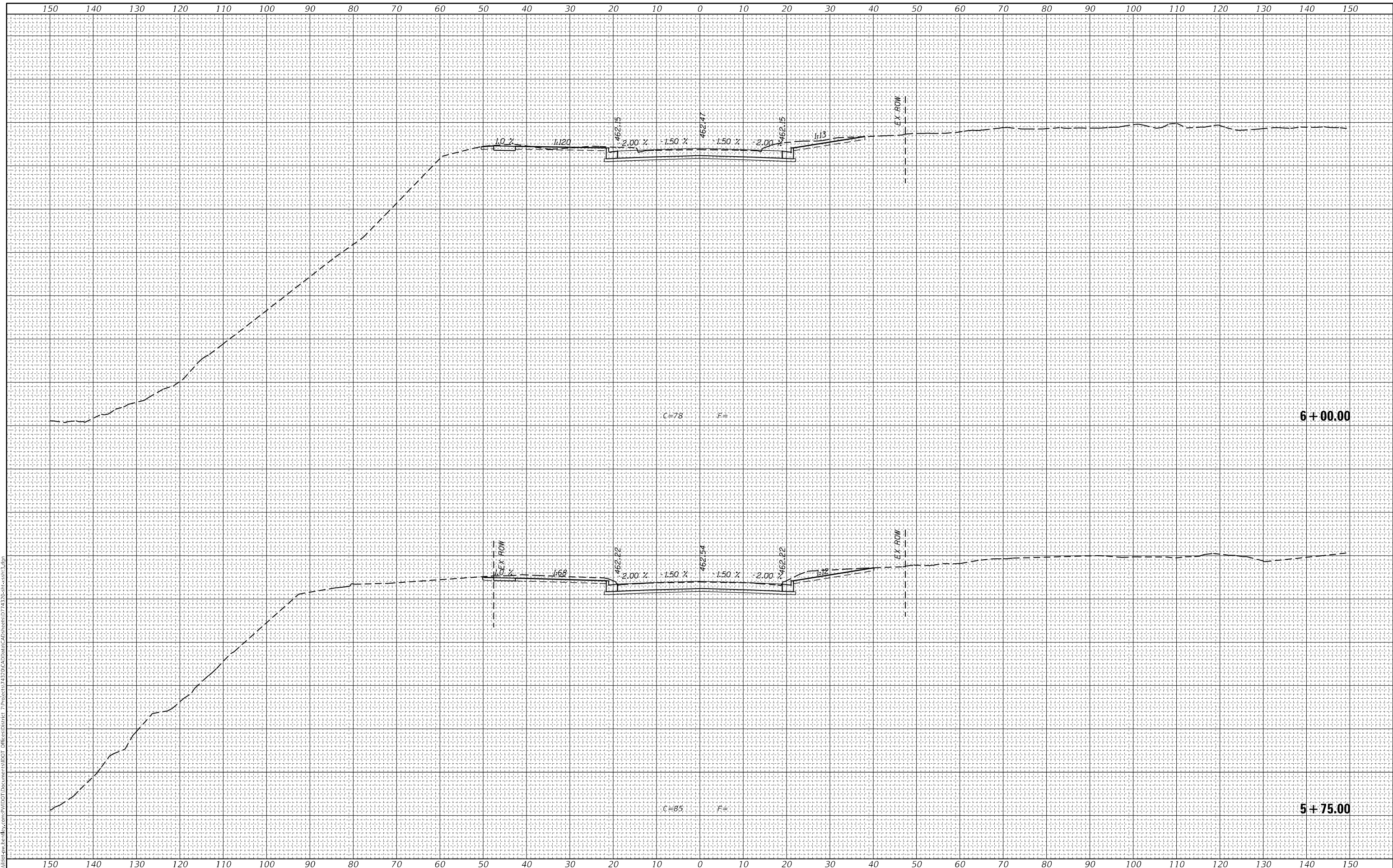
TREE PLANTING LOCATIONS			
SCALE:	SHEET	OF SHEETS	STA. TO STA.

F.A.P. RTE.	SECTION	COUNTY	TOTAL SHEETS	SHEET NO.
332	(12VR,2B)B	WABASH	24	15
CONTRACT NO. 74320				
ILLINOIS FED. AID PROJECT				

FINAL SURVEY NO.	SURVEYED	DATE
NOTE BOOK	PLOTTED	
	TEMPLATE	
	AREAS CHECKED	

ORIGINAL SURVEY NO.	SURVEYED	DATE
	PLOTTED	
	TEMPLATE	
	AREAS CHECKED	

MODEL: Default
 FILE NAME: \\sullivan-pw.lan.ibm.com\pww\DOT\Documents\DOT Office\Printer - Project\74320\CAD\Draw\CAD\Sheet\074320-ss-ss-hs-3.dgn



USER NAME = stefenmk	DESIGNED -	REVISED -
	DRAWN -	REVISED -
PLOT SCALE = 20,0000 * / in.	CHECKED -	REVISED -
PLOT DATE = 8/13/2021	DATE -	REVISED -

**STATE OF ILLINOIS
 DEPARTMENT OF TRANSPORTATION**

SCALE:		SHEET	OF	SHEETS	STA. 5+75.00	TO STA. 6+00.00
--------	--	-------	----	--------	--------------	-----------------

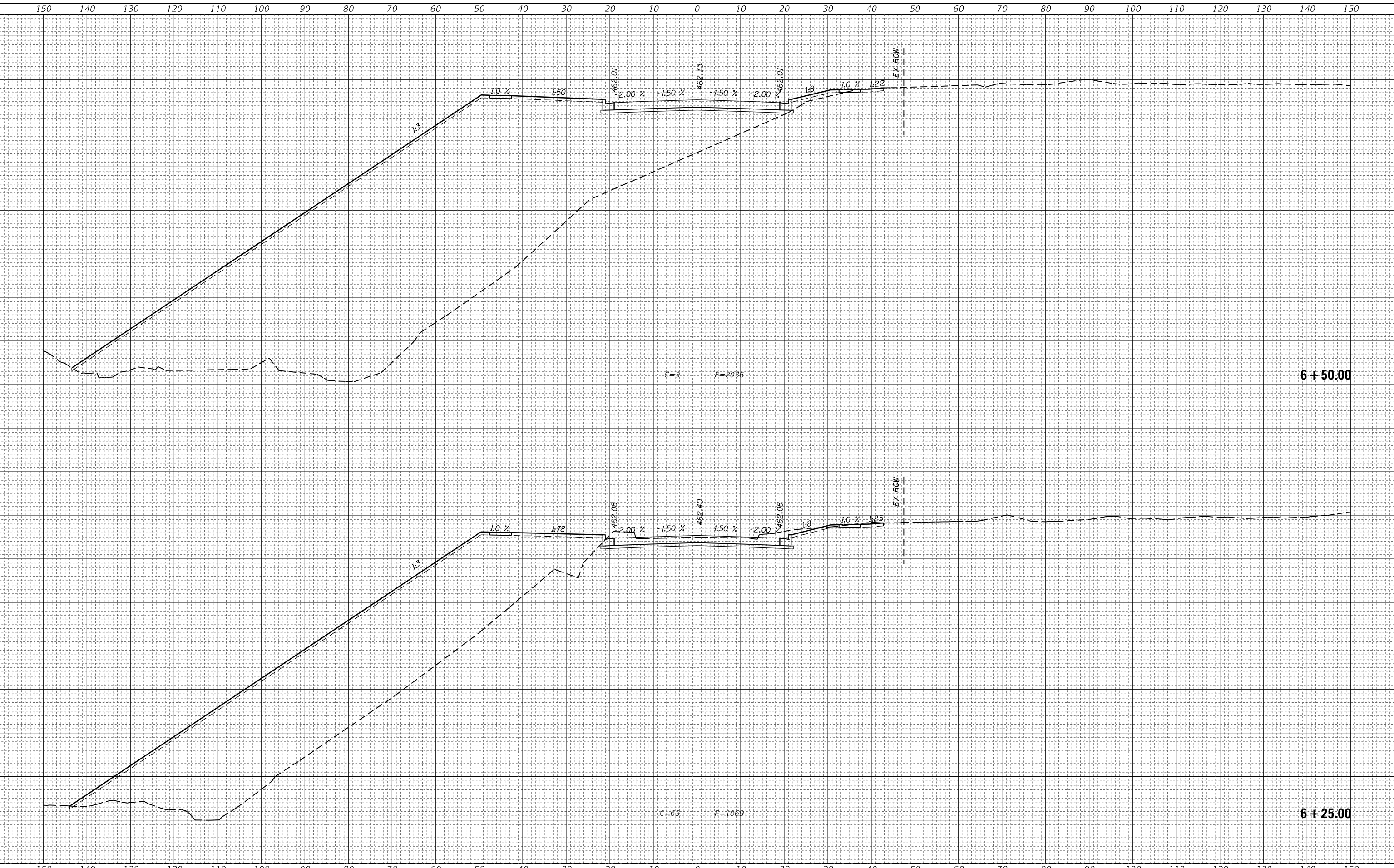
CROSS SECTIONS

F.A.P. RTE. 332	SECTION (12VR.2B)B	COUNTY WABASH	TOTAL SHEETS 24	SHEET NO. 17
			CONTRACT NO. 74320	
		ILLINOIS	FED. AID PROJECT	

FINAL SURVEY NO.	SURVEYED	DATE
NOTE BOOK	PLOTTED	
	TEMPLATE	
	AREAS	
	CHECKED	

ORIGINAL SURVEY NO.	SURVEYED	DATE
	PLOTTED	
	TEMPLATE	
	AREAS	
	CHECKED	

MODEL: Default
 FILE NAME: D:\work\paw\hennik\com\pww\DOT Documents\DOT Office\Printer - Project\74320\CAD\Draw\CAD\Sheet\074320-ss18-3.dgn



USER NAME = stefennik
PLOT SCALE = 20,0000 * / in.
PLOT DATE = 8/13/2021

DESIGNED -	REVISIED -
DRAWN -	REVISIED -
CHECKED -	REVISIED -
DATE -	REVISIED -

REVISIED -
REVISIED -
REVISIED -
REVISIED -

**STATE OF ILLINOIS
 DEPARTMENT OF TRANSPORTATION**

CROSS SECTIONS

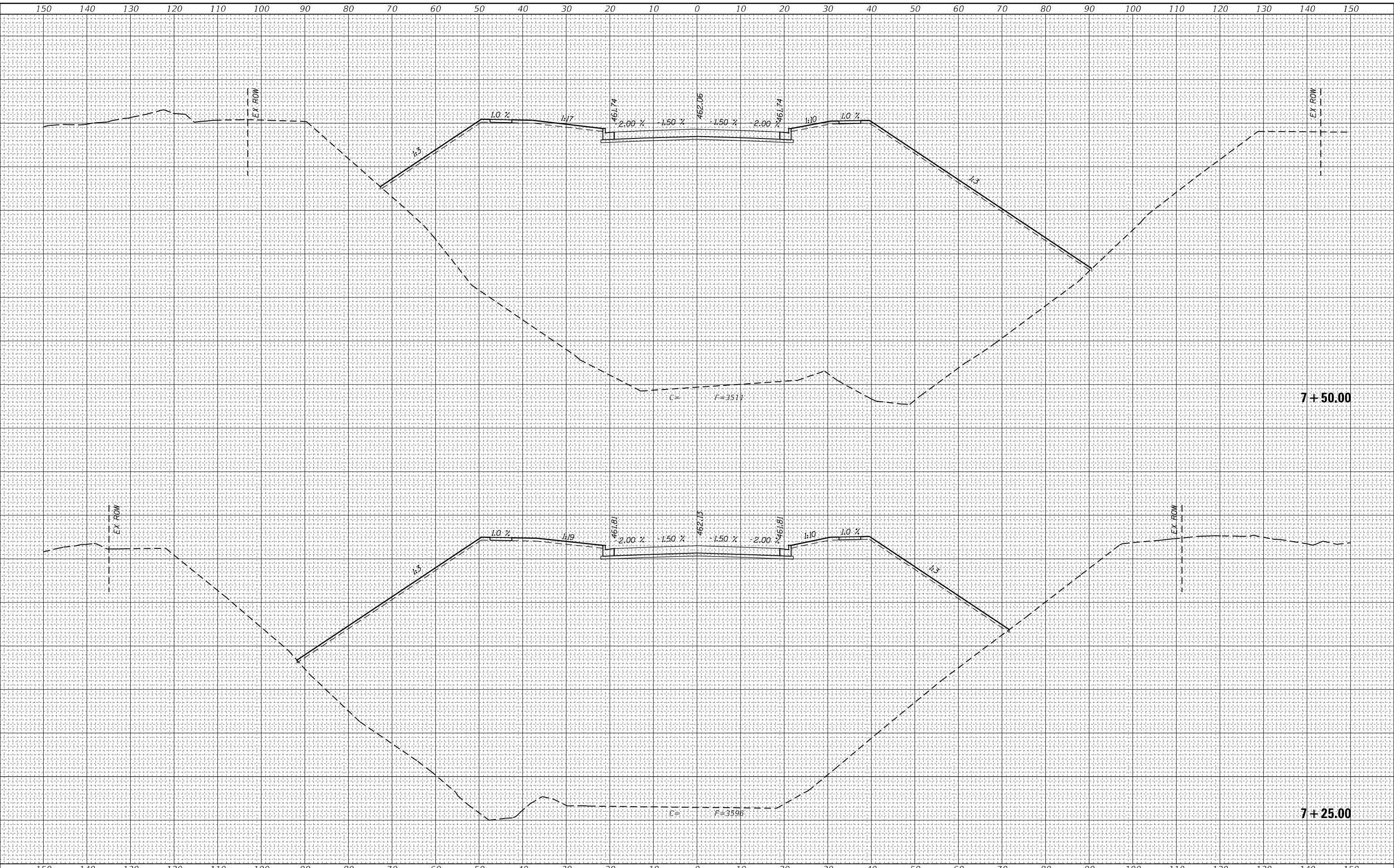
SCALE: SHEET OF SHEETS STA. 6+25.00 TO STA. 6+50.00

F.A.P. RTE. 332	SECTION (12VR,2B)B	COUNTY WABASH	TOTAL SHEETS 24	SHEET NO. 18
CONTRACT NO. 74320			ILLINOIS FED. AID PROJECT	

FINAL SURVEY NO.	SURVEYED	BY	DATE
NOTE BOOK	PLOTTED		
AREAS CHECKED	TEMPLATE		
	AREAS CHECKED		

ORIGINAL SURVEY NO.	SURVEYED	BY	DATE
	PLOTTED		
	TEMPLATE		
	AREAS CHECKED		

MODEL: Default
FILE NAME: \\sullivan-pw-ks-tdc\pww\DOT\Documents\DOT Office\Bentley\Project\74320\CAD\Draw\CAD\Sheet\074320-ss-ss-3.dgn



USER NAME = stefenmk
PLOT SCALE = 20,0000 * / in.
PLOT DATE = 8/13/2021

DESIGNED -
DRAWN -
CHECKED -
DATE -

REVISED -
REVISED -
REVISED -
REVISED -

**STATE OF ILLINOIS
DEPARTMENT OF TRANSPORTATION**

CROSS SECTIONS

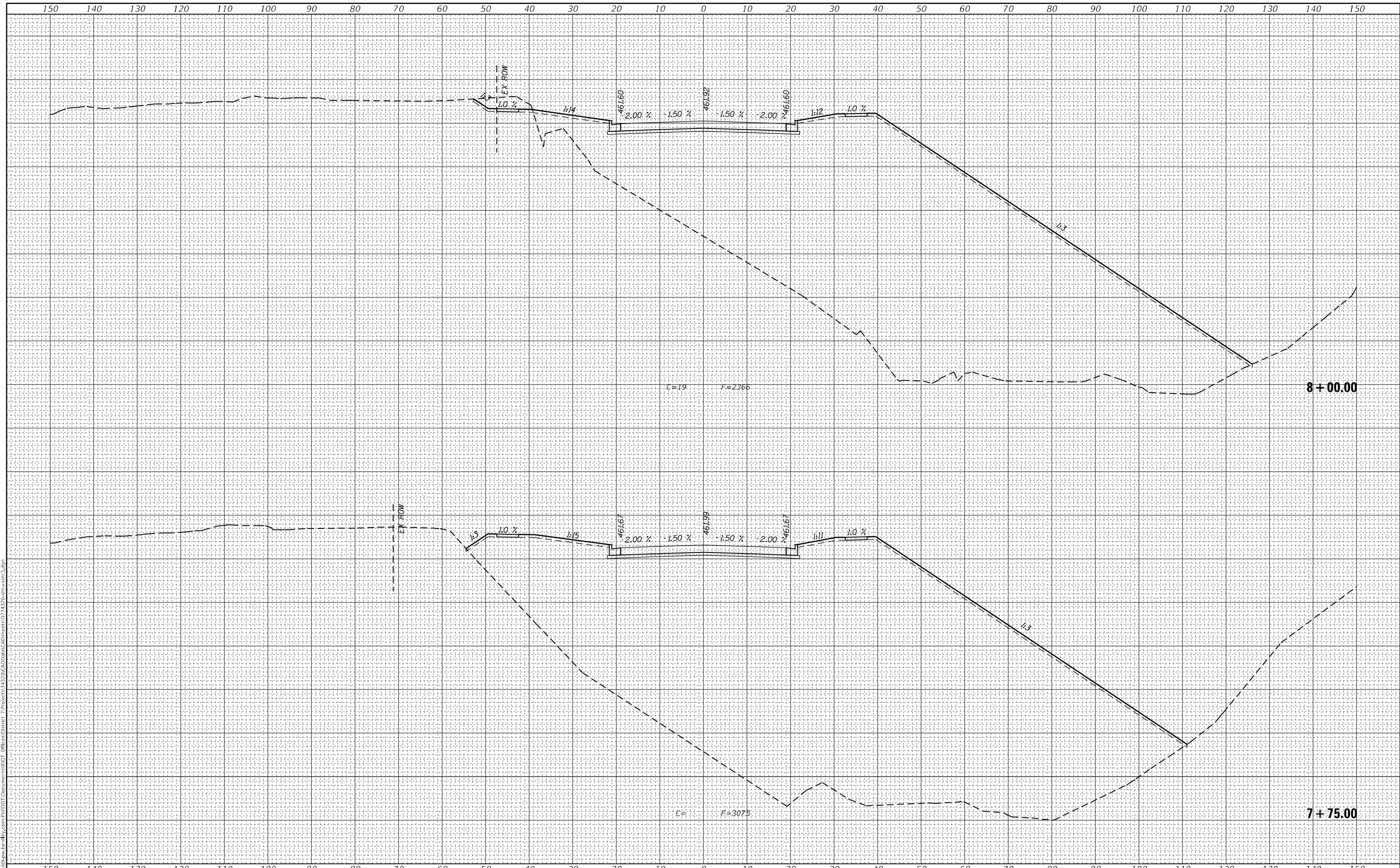
SCALE: SHEET OF SHEETS STA. 7+25.00 TO STA. 7+50.00

F.A.P. RTE. 332	SECTION (12VR,2B)B	COUNTY WABASH	TOTAL SHEETS 24	SHEET NO. 20
CONTRACT NO. 74320			ILLINOIS FED. AID PROJECT	

FINAL SURVEY	SURVEYED	BY	DATE
NOTE BOOK	PLOTTED		
NO.	TEMPLATE		
	AREAS CHECKED		

ORIGINAL SURVEY	SURVEYED	BY	DATE
NOTE BOOK	PLOTTED		
NO.	TEMPLATE		
	AREAS CHECKED		

MODEL: Default
FILE NAME: p:\work\paw\hennby.com\p\101\DOT Documents\101 DOT Office\center - Proj\sect74320\CAD\Draw\CAD\sheet\074320-ss128sh-3.dgn



USER NAME = stefenmk	DESIGNED -	REVISED -
	DRAWN -	REVISED -
PLOT SCALE = 20,0000 * / in.	CHECKED -	REVISED -
PLOT DATE = 8/13/2021	DATE -	REVISED -

**STATE OF ILLINOIS
DEPARTMENT OF TRANSPORTATION**

CROSS SECTIONS

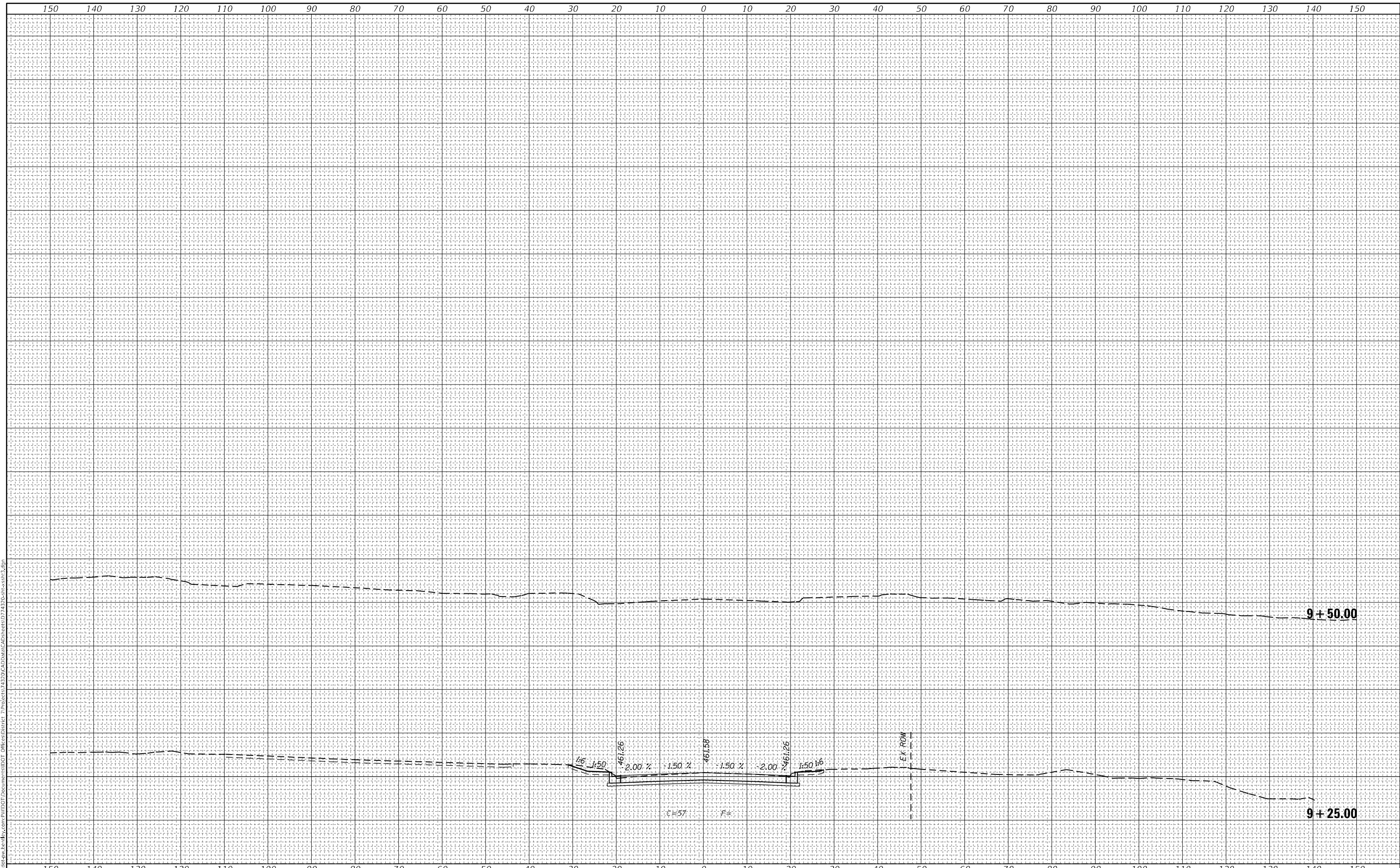
SCALE: SHEET OF SHEETS STA. 7+75.00 TO STA. 8+00.00

F.A.P. RTE.	SECTION	COUNTY	TOTAL SHEETS	SHEET NO.
332	(12VR,2B)B	WABASH	24	21
CONTRACT NO. 74320				
ILLINOIS FED. AID PROJECT				

FINAL SURVEY NO.	SURVEYED	BY	DATE
NOTE BOOK	PLOTTED		
AREAS CHECKED	TEMPLATE		
	AREAS CHECKED		

ORIGINAL SURVEY NO.	SURVEYED	BY	DATE
NOTE BOOK	PLOTTED		
AREAS CHECKED	TEMPLATE		
	AREAS CHECKED		

MODEL: Default
 FILE NAME: D:\work\paw\kennedy.com\p\1\DOT Documents\1107 Documents\1107 74320\CAD\Drawings\1107 74320-ss-ss-sh-3.dgn



USER NAME = stefenmk	DESIGNED -	REVISED -
	DRAWN -	REVISED -
PLOT SCALE = 20,0000 * / in.	CHECKED -	REVISED -
PLOT DATE = 8/13/2021	DATE -	REVISED -

**STATE OF ILLINOIS
 DEPARTMENT OF TRANSPORTATION**

CROSS SECTIONS

SCALE: SHEET OF SHEETS STA. 9+25.00 TO STA. 9+50.00

F.A.P. RTE. 332	SECTION (12VR.2B)B	COUNTY WABASH	TOTAL SHEETS 24	SHEET NO. 24
CONTRACT NO. 74320			ILLINOIS FED. AID PROJECT	