

STATE OF ILLINOIS
DEPARTMENT OF TRANSPORTATION

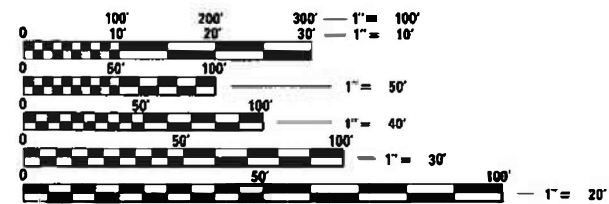
FAI ROUTE	SECTION	COUNTY	TOTAL SHEETS	SHEET NO.
70A	82-2-1HVB-BJR-1	ST. CLAIR	18	1
		ILLINOIS	CONTRACT NO. 76P05	

FOR INDEX OF SHEETS, SEE SHEET NO. 2

**PROPOSED
HIGHWAY PLANS**

**FAI ROUTE 70A (I-70)
SECTION 82-2-1HVB-BJR-1
PROJECT NHPP-7V05(086)
BRIDGE JOINT REPAIR
ST. CLAIR COUNTY**

C-98-144-20

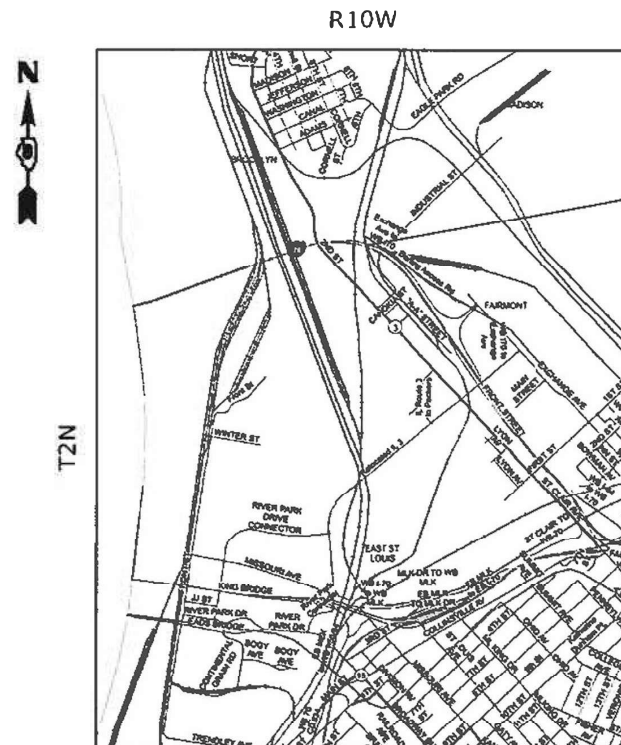


FULL SIZE PLANS HAVE BEEN PREPARED USING STANDARD ENGINEERING SCALES. REDUCED SIZED PLANS WILL NOT CONFORM TO STANDARD SCALES. IN MAKING MEASUREMENTS ON REDUCED PLANS, THE ABOVE SCALES MAY BE USED.

J.U.L.I.E.
JOINT UTILITY LOCATION INFORMATION FOR EXCAVATORS
1-800-892-0123
OR 811

PROJECT ENGINEER: CHERYL KEPLAR (618) 346-3123
PROJECT MANAGER: TONI MANN (618) 346-3189

CONTRACT NO. 76P05



PROJECT LOCATION
I-70 EB SN 082-0318
LAT: 38.64871
LONG: -90.16127

GROSS/NET LENGTH = 1268.8 FT. = 0.24 MILE

STATE OF ILLINOIS
DEPARTMENT OF TRANSPORTATION

SUBMITTED Aug 12 20 21
Keith Kolbert
REGIONAL ENGINEER

October 1 20 21
[Signature]
ENGINEER OF DESIGN AND ENVIRONMENT

October 21 21
Stephen M. Fair
DIRECTOR OF HIGHWAYS PROJECT IMPLEMENTATION

**PRINTED BY THE AUTHORITY
OF THE STATE OF ILLINOIS**

90% FED
10% STATE

CODE NO.	ITEM	UNIT	TOTAL QUANTITY	CONSTR. CODE
				URBAN
				MINOR STRUCTURES
				0047 082-0318
42001300	PROTECTIVE COAT	SQ YD	58	58
50102400	CONCRETE REMOVAL	CU YD	29.5	29.5
50300255	CONCRETE SUPERSTRUCTURE	CU YD	29.5	29.5
50800205	REINFORCEMENT BARS, EPOXY COATED	POUND	1930	1930
50800515	BAR SPLICERS	EACH	35	35
67100100	MOBILIZATION	L SUM	1	1
70100205	TRAFFIC CONTROL AND PROTECTION, STANDARD 701401	EACH	1	1
70107005	PAVEMENT MARKING BLACKOUT TAPE, 5"	FOOT	100	100
70107025	CHANGEABLE MESSAGE SIGN	CAL DA	360	360
70200100	NIGHTTIME WORK ZONE LIGHTING	L SUM	1	1
70300220	TEMPORARY PAVEMENT MARKING - LINE 4"	FOOT	3445	3445
70400100	TEMPORARY CONCRETE BARRIER	FOOT	1050	1050
70400200	RELOCATE TEMPORARY CONCRETE BARRIER	FOOT	1050	1050
70600260	IMPACT ATTENUATORS, TEMPORARY (FULLY REDIRECTIVE, NARROW), TEST LEVEL 3	EACH	2	2

MODEL: D:\pilot\...
 FILE NAME: ...
 PLOT DATE: 8/12/2021

REV. - MS

REV-SEP

USER NAME = challandeske DESIGNED - DRAWN - PLOT SCALE = 100.0000' / in. CHECKED - PLOT DATE = 8/12/2021 DATE - REVISED - REVISED - REVISED + REVISED +	STATE OF ILLINOIS DEPARTMENT OF TRANSPORTATION	SUMMARY OF QUANTITIES	F.A.I. RTE. 70A	SECTION 82-2-1HVB-BJR-1	COUNTY ST. CLAIR	TOTAL SHEETS 18	SHEET NO. 3	CONTRACT NO. 76P05	ILLINOIS FED. AID PROJECT
SCALE:		SHEET OF SHEETS	STA. TO STA.						



CHANGEABLE MESSAGE BOARD



PROJECT LOCATION

MODEL: D:\draft\...
 FILE: NAME: ...
 PROJECT: ...
 OFFICE: ...
 DATE: ...

USERS: NAME: ...	DESIGNED -	REVISED -
DRAWN -	REVISED -	REVISED -
PLOT SCALE = 100,0000' / in.	CHECKED -	REVISED -
PLOT DATE = 8/12/2021	DATE -	REVISED -

**STATE OF ILLINOIS
DEPARTMENT OF TRANSPORTATION**

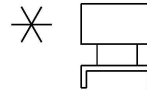
**CHANGEABLE MESSAGE SIGN
PROPOSED LOCATIONS**

SCALE: SHEET OF SHEETS STA. TO STA.

F.A.I. RTE.	SECTION	COUNTY	TOTAL SHEETS	SHEET NO.
70A	82-2-1HVB-BJR-1	ST. CLAIR	18	4A
			CONTRACT NO. 76P05	
ILLINOIS FED. AID PROJECT				

REV. - MS




 CHANGEABLE MESSAGE BOARD WITH DOPLAR SPEED SENSOR AT ONE MILE SPACING


 CHANGEABLE MESSAGE BOARD



PROJECT LOCATION

MODEL: D:\draft\...
 FILE NAME: ...
 PROJECT: ...
 OFFICE: ...
 DATE: ...

REV. - MS

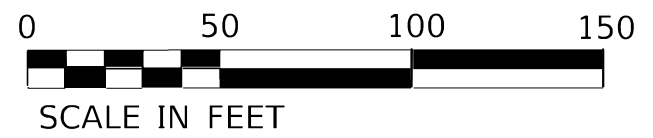
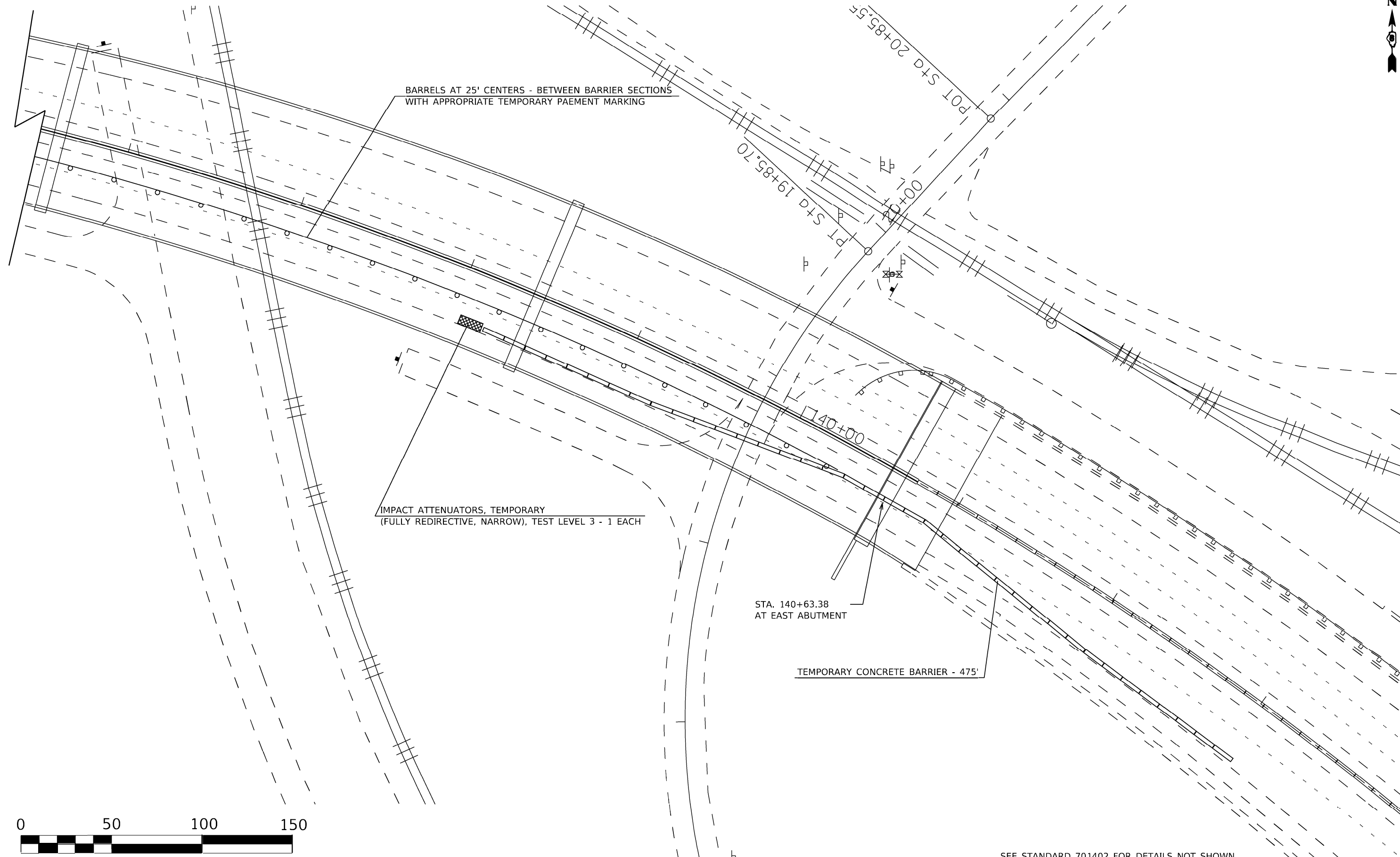
USER NAME = chhainat@skanska.com	DESIGNED -	REVISIONS -
	DRAWN -	REVISIONS -
PLOT SCALE = 100,000' / in.	CHECKED -	REVISIONS -
PLOT DATE = 8/12/2021	DATE -	REVISIONS -

STATE OF ILLINOIS
DEPARTMENT OF TRANSPORTATION

CHANGEABLE MESSAGE SIGN
PROPOSED LOCATIONS

SCALE: SHEET OF SHEETS STA. TO STA.

F.A.I. RTE.	SECTION	COUNTY	TOTAL SHEETS	SHEET NO.
70A	82-2-1HVB-BJR-1	ST. CLAIR	18	4B
ILLINOIS FED. AID PROJECT			CONTRACT NO. 76P05	



SEE STANDARD 701402 FOR DETAILS NOT SHOWN

REV. - MS

MODEL: Default
 FILE: \\p1101dot-pw-bentley.com\P1101\Documents\DOT_Offices\District_8\Projects\82-2-1HVB-BJR-1\CADD\Drawings\82-2-1HVB-BJR-1-Plan.dgn

USER NAME = chailandeske	DESIGNED -	REVISED -
	DRAWN -	REVISED -
PLOT SCALE = 100.0000' / in.	CHECKED -	REVISED -
PLOT DATE = 9/30/2021	DATE -	REVISED -

STATE OF ILLINOIS
DEPARTMENT OF TRANSPORTATION

STAGE 1 LAYOUT				
SCALE:	SHEET	OF	SHEETS	STA. TO STA.

F.A.I. RTE.	SECTION	COUNTY	TOTAL SHEETS	SHEET NO.
70A	82-2-1HVB-BJR-1	ST. CLAIR	18	6
CONTRACT NO. 76P05				
ILLINOIS FED. AID PROJECT				



RELOCATE TEMPORARY CONCRETE BARRIER - 575'

TEMPORARY PAVEMENT MARKING - LINE 4" - 1635'
INCLUDING 1210' FOR BETWEEN WORK ZONES

30+00

150+00

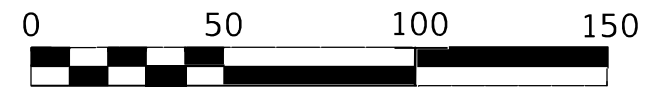
125+00

BARRELS AT 25' CENTERS - BETWEEN BARRIER SECTIONS
WITH APPROPRIATE TEMPORARY PAVEMENT MARKING - 1210'

STA. 127+82.35
AT PIER 23

IMPACT ATTENUATORS, RELOCATE
(FULLY REDIRECTIVE, NARROW), TEST LEVEL 3 - 1 EACH

PC STA 147+61.66



SCALE IN FEET

SEE STANDARD 701402 FOR DETAILS NOT SHOWN

REV. - MS

MODEL: Default
 FILE NAME: p:\highway\com.dta\illinois.gov\IWDOT\Documents\DOT_Offices\District 8\Projects\0876905\CADD\data\CAD\sheets\0876905-sh-Plan.dgn

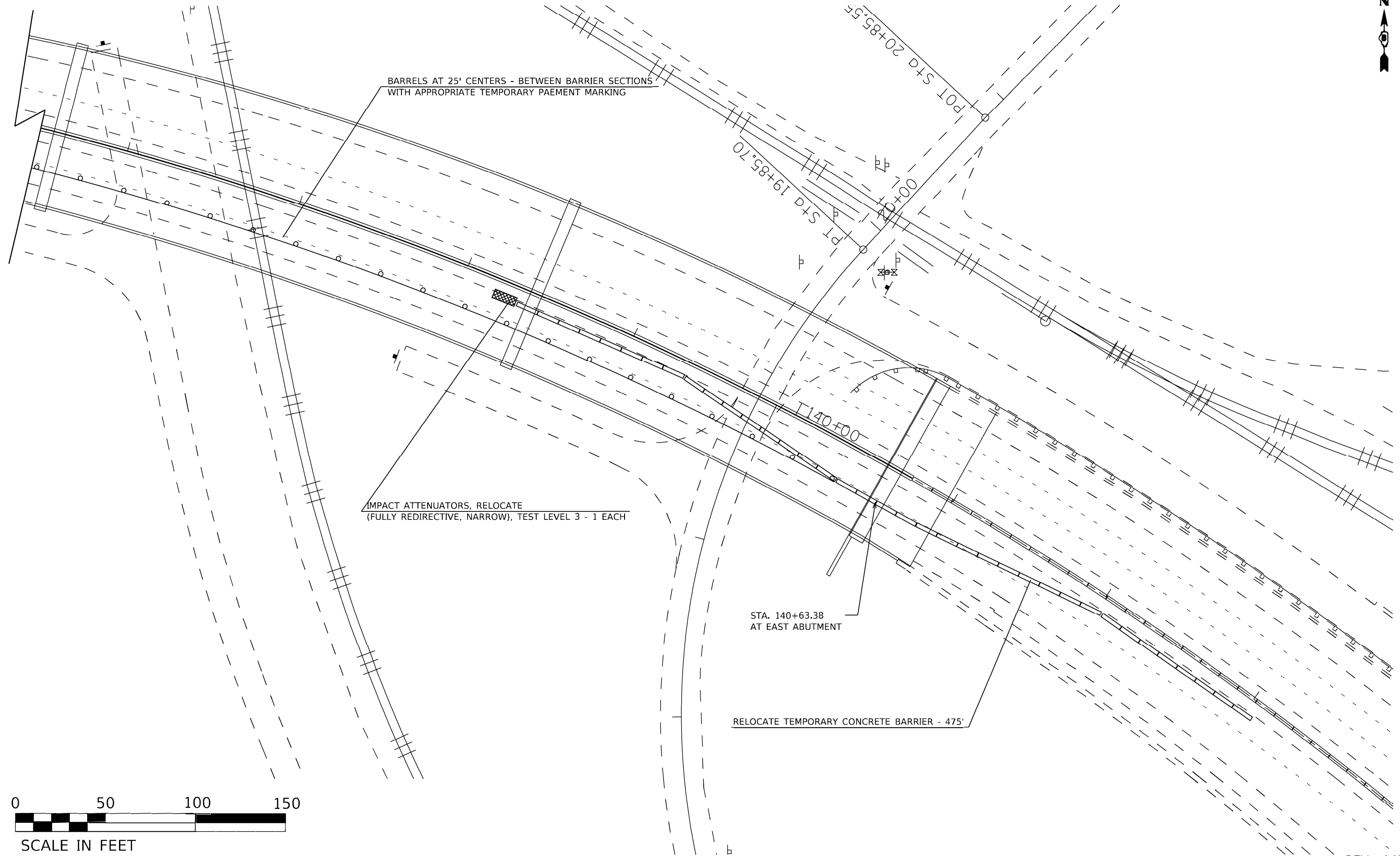
USER NAME = chailandeske	DESIGNED -	REVISED -
	DRAWN -	REVISED -
PLOT SCALE = 100.0000' / in.	CHECKED -	REVISED -
PLOT DATE = 8/12/2021	DATE -	REVISED -

**STATE OF ILLINOIS
DEPARTMENT OF TRANSPORTATION**

STAGE 2 LAYOUT

SCALE: SHEET OF SHEETS STA. TO STA.

F.A.I. RTE.	SECTION	COUNTY	TOTAL SHEETS	SHEET NO.
70A	82-2-1HVB-BJR-1	ST. CLAIR	18	7
ILLINOIS FED. AID PROJECT			CONTRACT NO. 76P05	



SEE STANDARD 701402 FOR DETAILS NOT SHOWN

REV. - MS

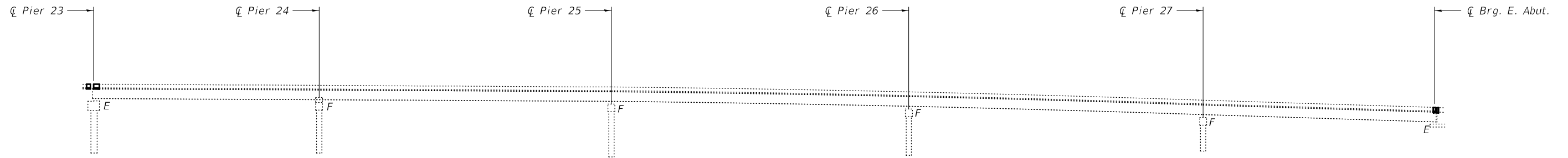
MODEL: Default
 FILE: \\p111101\dot\p111101\Documents\DOT_Offices\District_8\Projects\82-2-1HVB-BJR-1\CAD\Drawings\82-2-1HVB-BJR-1-Plan.dgn

USER NAME = chailandeske	DESIGNED -	REVISED -
	DRAWN -	REVISED -
PLOT SCALE = 100.0000' / in.	CHECKED -	REVISED -
PLOT DATE = 9/30/2021	DATE -	REVISED -

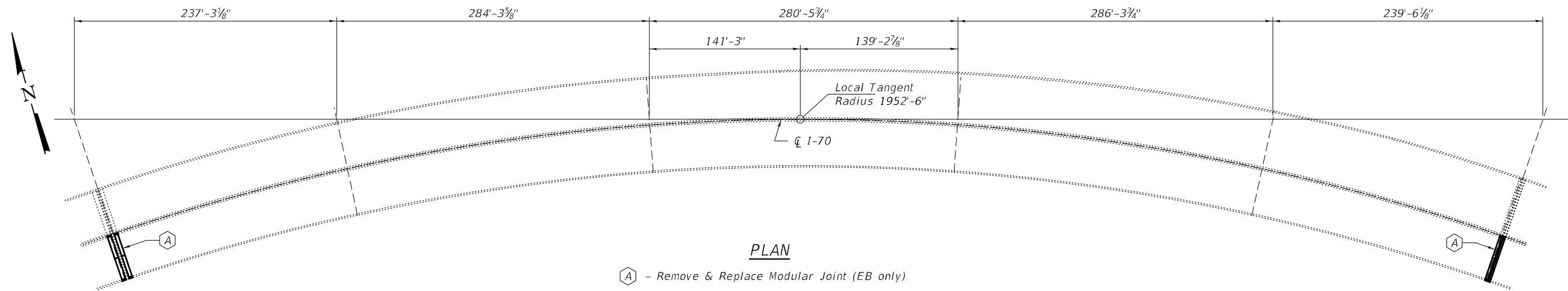
STATE OF ILLINOIS
DEPARTMENT OF TRANSPORTATION

STAGE 2 LAYOUT				
SCALE:	SHEET	OF	SHEETS	STA. TO STA.

F.A.I. RTE.	SECTION	COUNTY	TOTAL SHEETS	SHEET NO.
70A	82-2-1HVB-BJR-1	ST. CLAIR	18	8
CONTRACT NO. 76P05				
ILLINOIS FED. AID PROJECT				



ELEVATION
(Looking North)



PLAN

A - Remove & Replace Modular Joint (EB only)

GENERAL NOTES

All structural steel shall conform to AASHTO Classification M-270 Gr. 36, unless otherwise noted.

Reinforcement bars designated (E) shall be epoxy coated.

Prior to pouring the new concrete deck, all heavy or loose rust, loose mill scale, and other loose or potentially detrimental foreign material shall be removed from the surfaces in contact with concrete. Tightly adhered paint may remain unless otherwise noted. Removal shall be accomplished by methods that will not damage the steel and the cost will be included in the pay item covering removal of the existing concrete.

Plan dimensions and details relative to existing plans are subject to nominal construction variations. The Contractor shall field verify existing dimensions and details affecting new construction and make necessary approved adjustments prior to construction or ordering of materials. Such variations shall not be cause for additional compensation for a change in scope of the work, however, the Contractor will be paid for the quantity actually furnished at the unit price bid for the work.

Existing reinforcement bars extending into the removal area shall be cleaned, straightened and incorporated into the new construction. Any reinforcement bars that are damaged during concrete removal shall be replaced with an approved bar splicer or anchorage system. Cost included with Concrete Removal.

The deck surface shall have its final finish tined according to Article 420.09(e)(1) of the Standard Specifications. Cost included with Concrete Superstructure.

Joint openings shall be adjusted according to Article 520.04 of the Std. Specs. when the deck is poured at an ambient temperature other than 50° F.

The steel components for the Modular Expansion Joints shall be hot-dip galvanized according to Special Provision "Hot Dip Galvanizing for Structural Steel".

Existing structure plans will be made available upon request.

DESIGN SPECIFICATIONS

AASHTO LRFD Bridge Design Specifications

TOTAL BILL OF MATERIAL

ITEM	UNIT	QUANTITY
Concrete Removal	Cu. Yd.	29.5
Concrete Superstructure	Cu. Yd.	29.5
Reinforcement Bars, Epoxy Coated	Pound	1930
Protective Coat	Sq. Yd.	58
Bar Splicers	Each	35
Modular Expansion Joint 9"	Foot	43
Modular Expansion Joint 24"	Foot	43
Bridge Deck Concrete Sealer	Sq. Ft.	62675



EXPIRES 11-30-2022

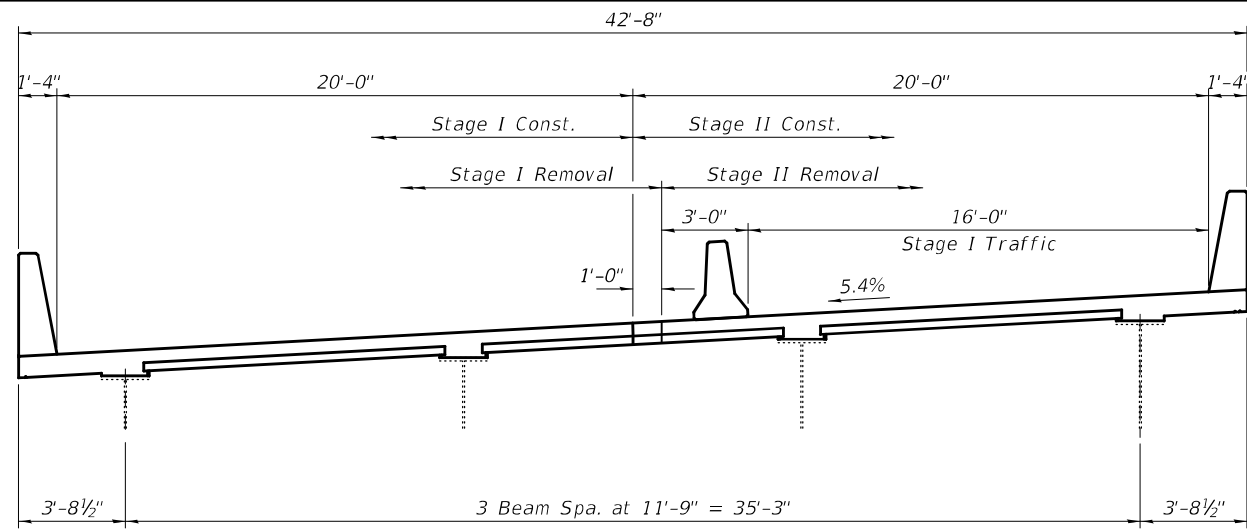
DESIGNED - Victor H. Veliz	EXAMINED - <i>Tracy A. [Signature]</i>	DATE - SEPTEMBER 30, 2021
CHECKED - Chi-Cheung Chau	ENGINEER OF STRUCTURAL SERVICES	
DRAWN - daburdell	PASSED - <i>Dr. Carl [Signature]</i>	REVISED -
CHECKED - VHV CCC	ENGINEER OF BRIDGES AND STRUCTURES	REVISED -

STATE OF ILLINOIS
DEPARTMENT OF TRANSPORTATION

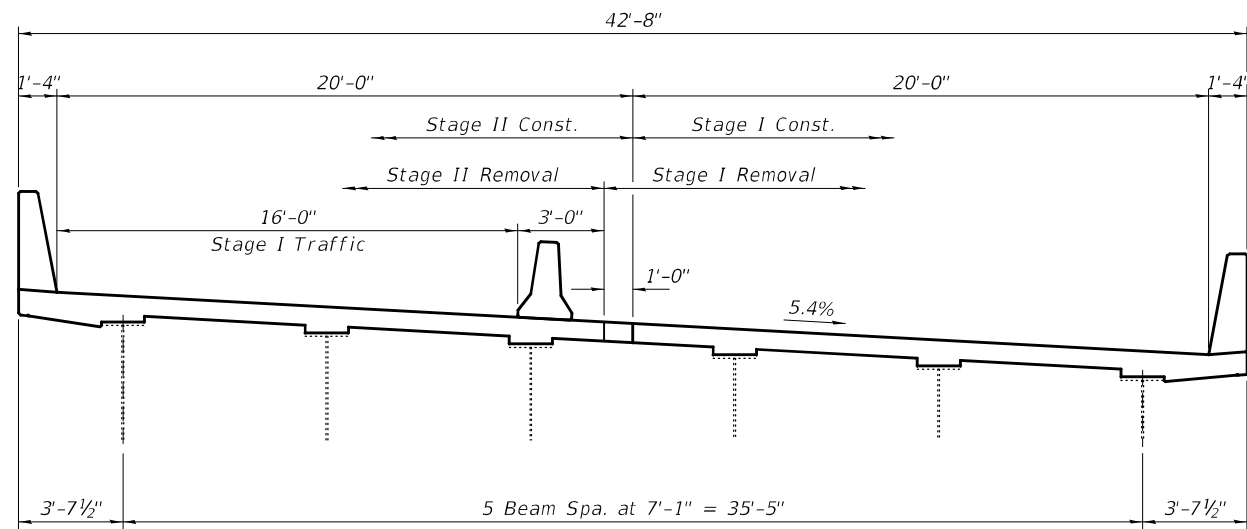
GENERAL PLAN AND ELEVATION
FAI 70 OVER MISSISSIPPI RIVER
SN 082-0318 (EB)

SHEET NO. 1 OF 8 SHEETS

F.A.I. RTE.	SECTION	COUNTY	TOTAL SHEETS	SHEET NO.
70	82-2-1HVB-BJR-1	ST. CLAIR	18	9
ILLINOIS			CONTRACT NO. 76P05	
FED. AID PROJECT				



CROSS SECTION
Pier 23 - Looking West



CROSS SECTION
East Abut. & Pier 23 - Looking East

DESIGNED - VHV
 CHECKED - CCC
 DRAWN - daburdell
 CHECKED - VHV CCC

EXAMINED
 PASSED
 ENGINEER OF STRUCTURAL SERVICES
 ENGINEER OF BRIDGES AND STRUCTURES

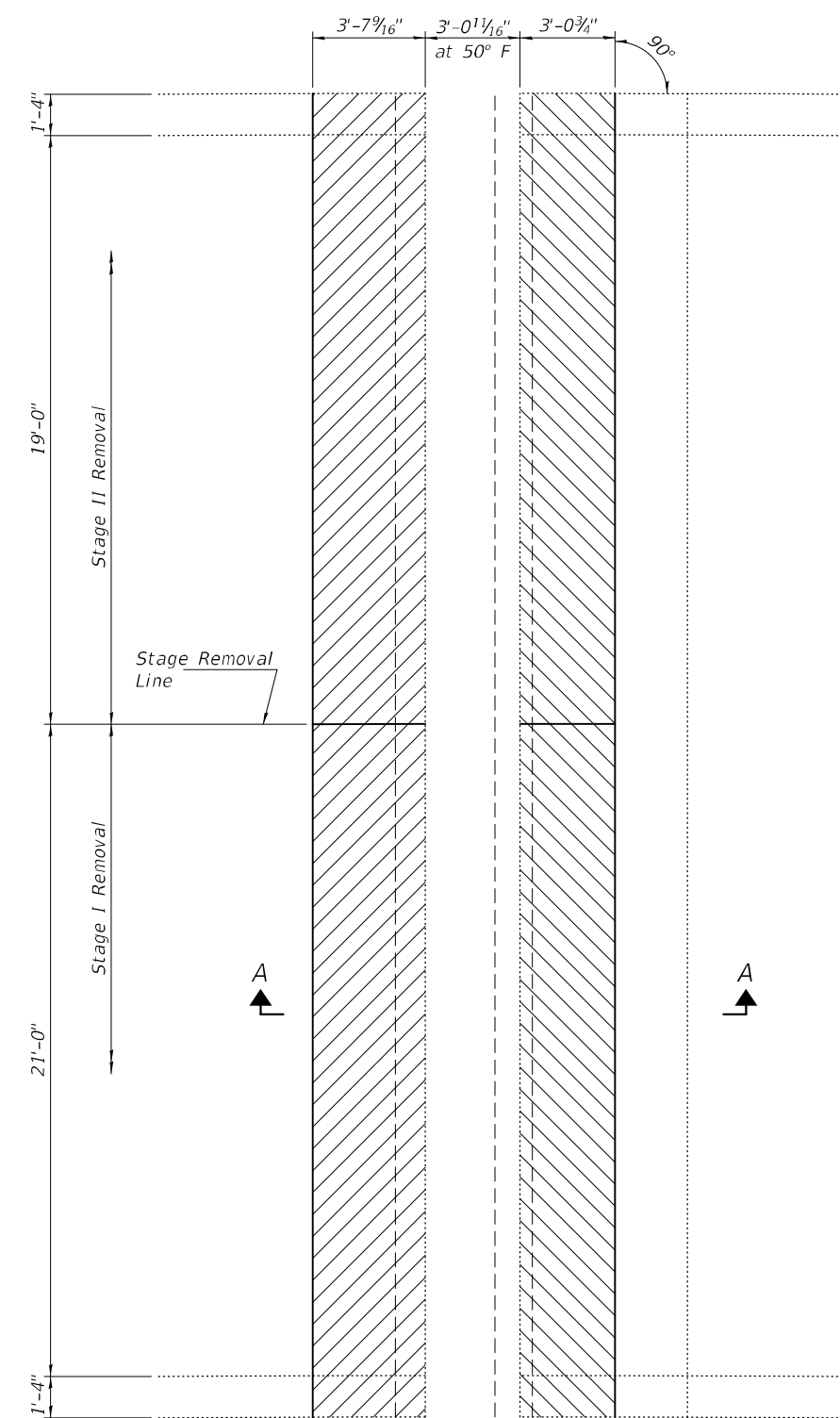
DATE - SEPTEMBER 30, 2021
 REVISED -
 REVISED -

STATE OF ILLINOIS
DEPARTMENT OF TRANSPORTATION

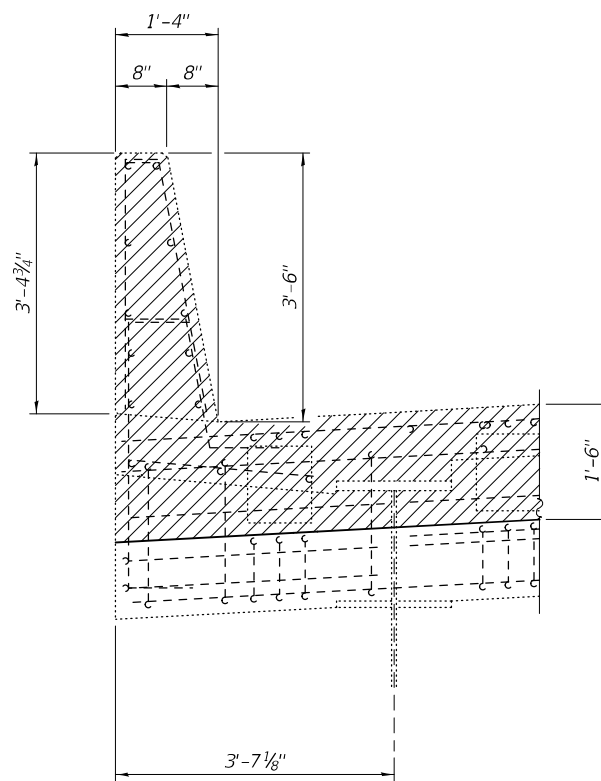
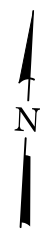
STAGE CONSTRUCTION DETAILS
SN 082-0318 (EB)

SHEET NO. 2 OF 8 SHEETS

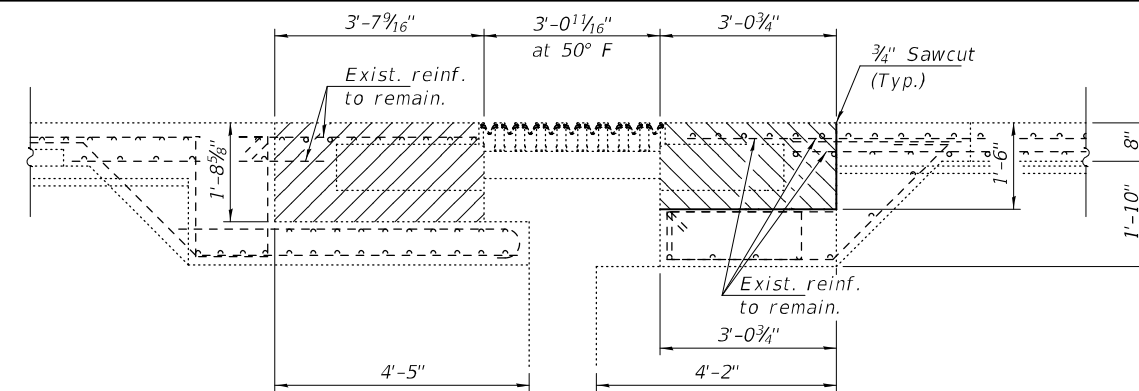
F.A.I. RTE.	SECTION	COUNTY	TOTAL SHEETS	SHEET NO.
70	82-2-1HVB-BJR-1	ST. CLAIR	18	10
CONTRACT NO. 76P05				
ILLINOIS		FED. AID PROJECT		



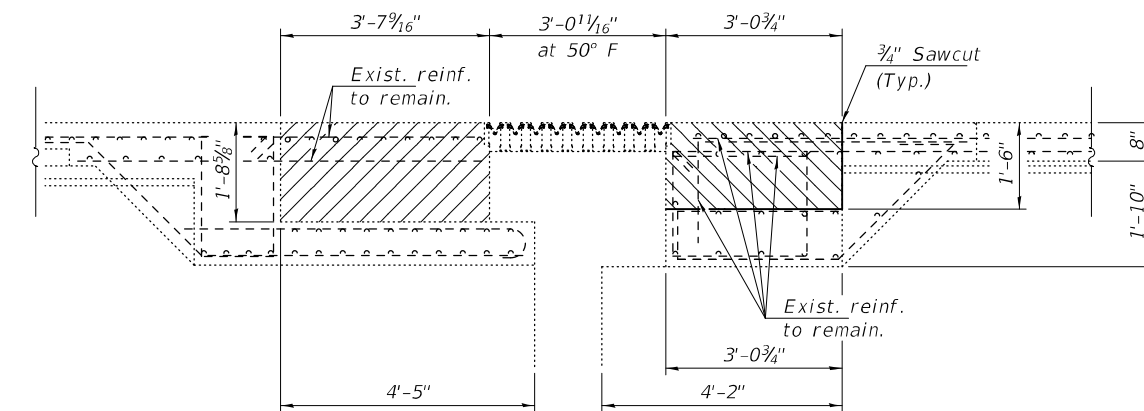
CONCRETE REMOVAL DETAILS
Pier 23



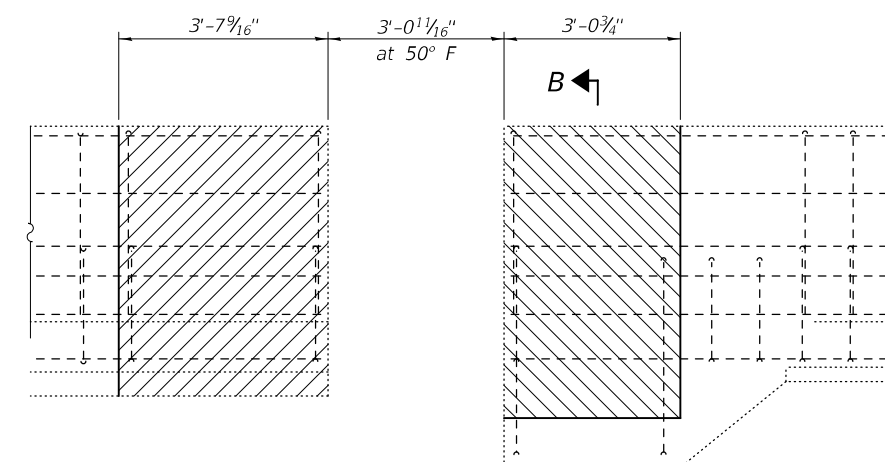
SECTION B-B



SECTION A-A
(At Support Box)



SECTION A-A
(Between Support Boxes)



OUTSIDE VIEW AT SOUTH PARAPET

Notes:
Hatched areas indicate Concrete Removal.
Cost of existing modular joint removal is included with Concrete Removal.

DESIGNED - VHV
CHECKED - CCC
DRAWN - daburdell
CHECKED - VHV CCC

EXAMINED
PASSED

 ENGINEER OF STRUCTURAL SERVICES
 ENGINEER OF BRIDGES AND STRUCTURES

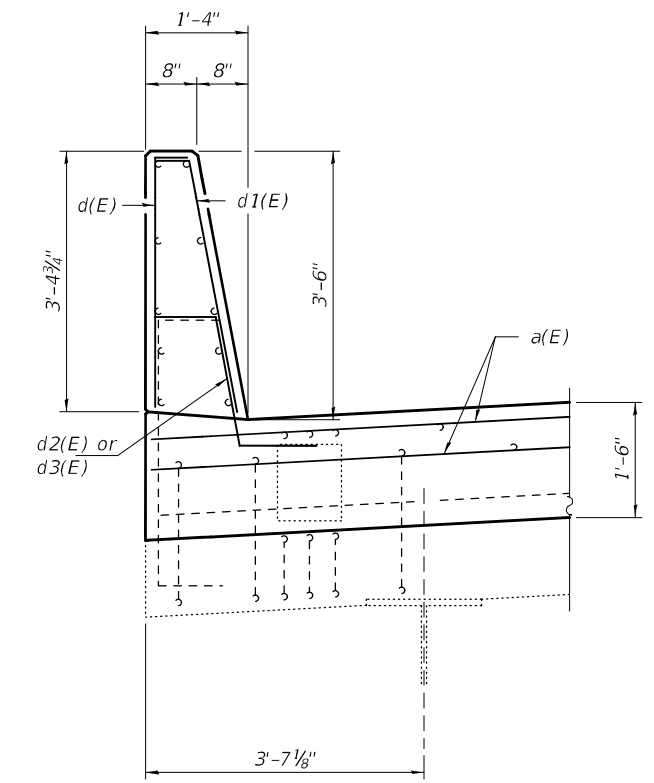
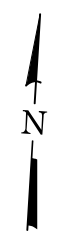
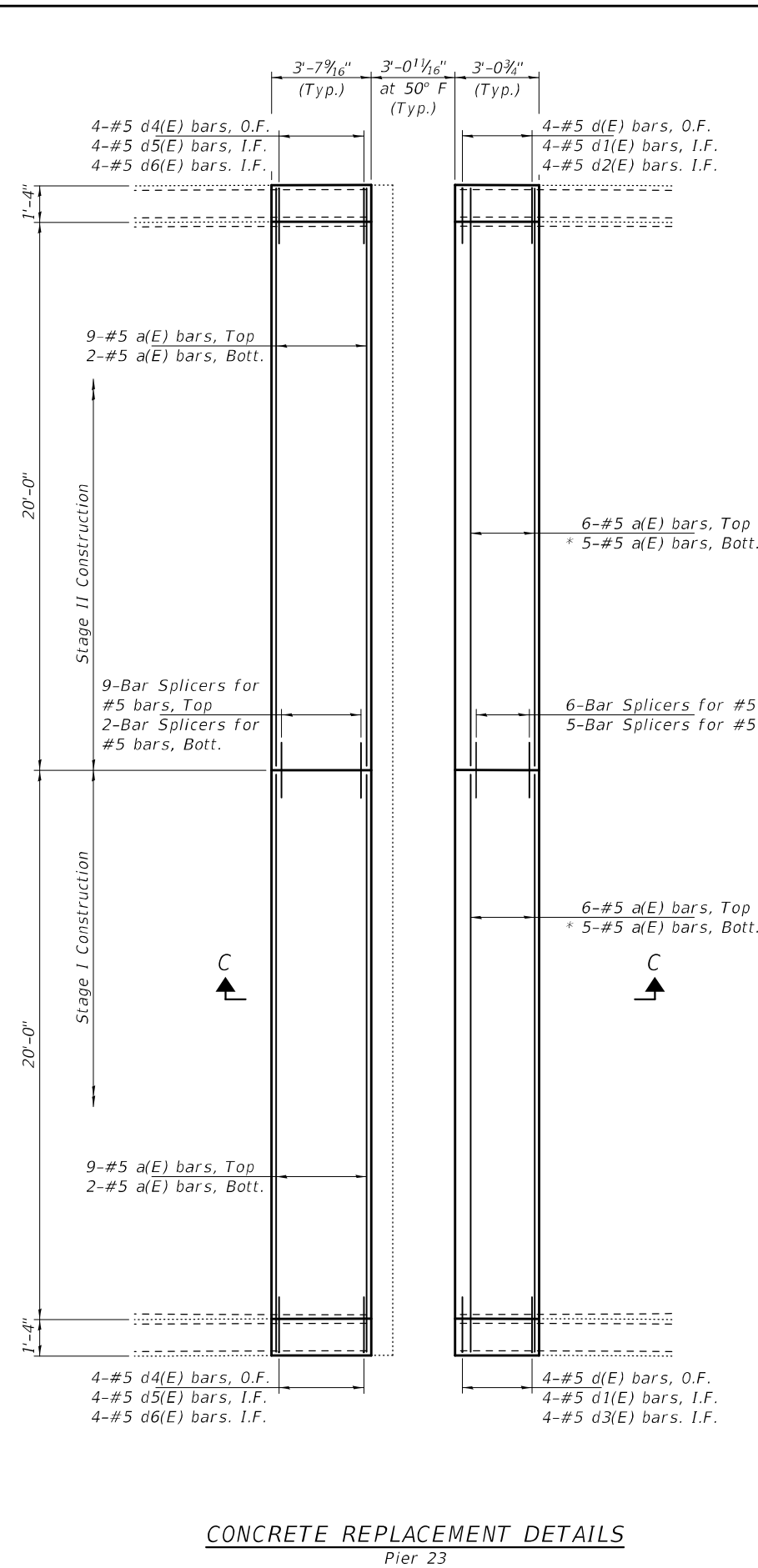
DATE - SEPTEMBER 30, 2021
 REVISED -
 REVISED -

STATE OF ILLINOIS
DEPARTMENT OF TRANSPORTATION

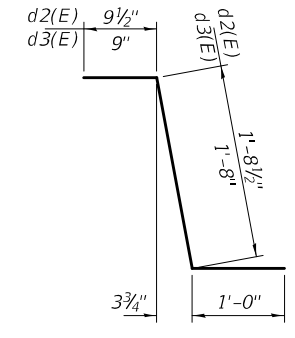
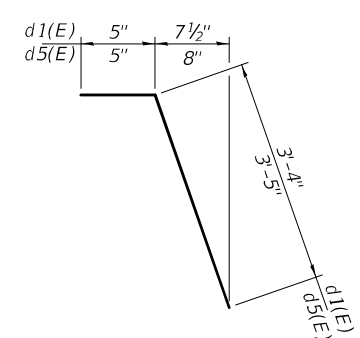
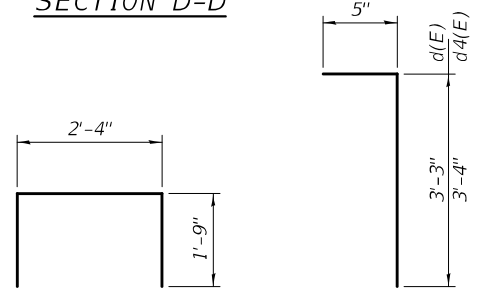
JOINT REMOVAL DETAILS - PIER 23
SN 082-0319 (WB)

SHEET NO. 3 OF 8 SHEETS

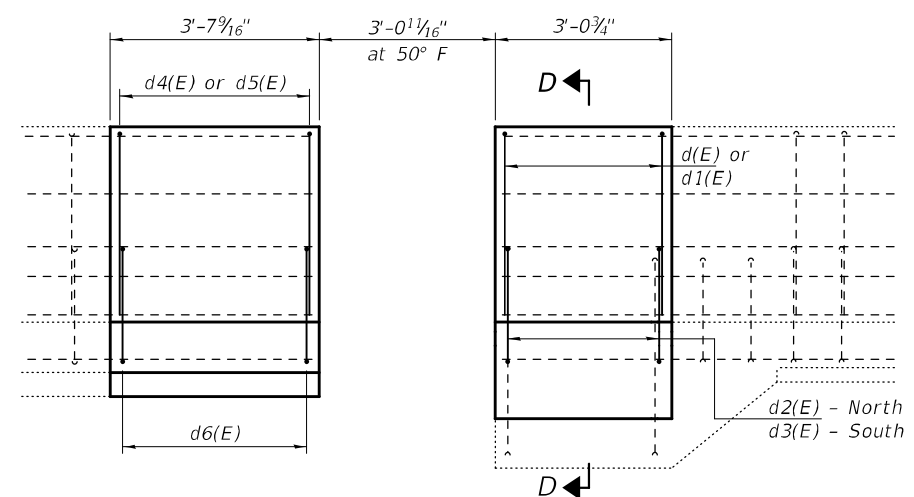
F.A.I. RTE.	SECTION	COUNTY	TOTAL SHEETS	SHEET NO.
70	82-2-1HVB-BJR-1	ST. CLAIR	18	11
CONTRACT NO. 76P05				
ILLINOIS FED. AID PROJECT				



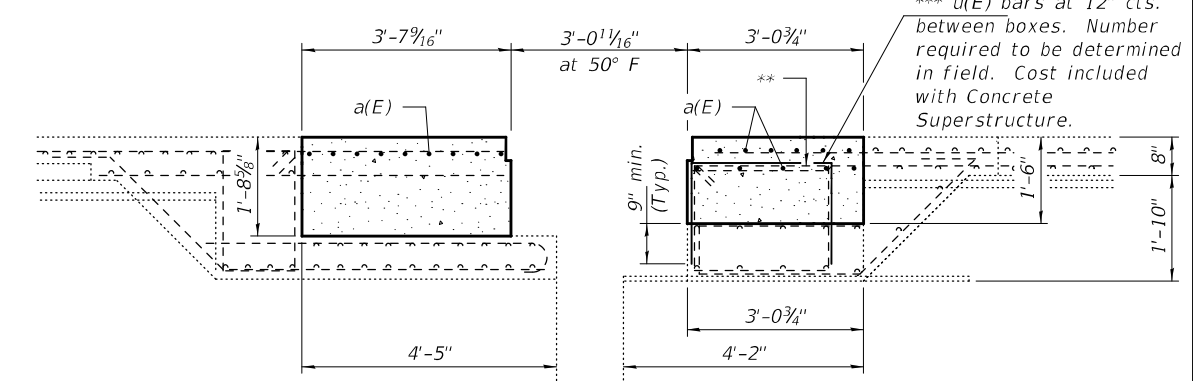
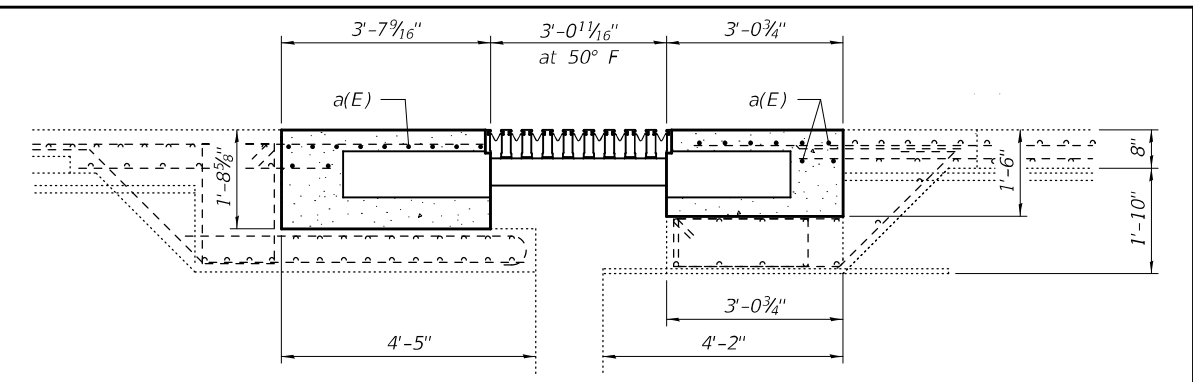
SECTION D-D



* a(E) bars cut to fit between boxes.



OUTSIDE VIEW AT SOUTH PARAPET
(North Parapet similar, except as noted.)



SECTION C-C
(At Support Box)

SECTION C-C
(Between Support Boxes)

** As required, cut existing stirrup flush only if it interferes with proposed support boxes. Number required to be determined in field. Cost included with Concrete Superstructure.

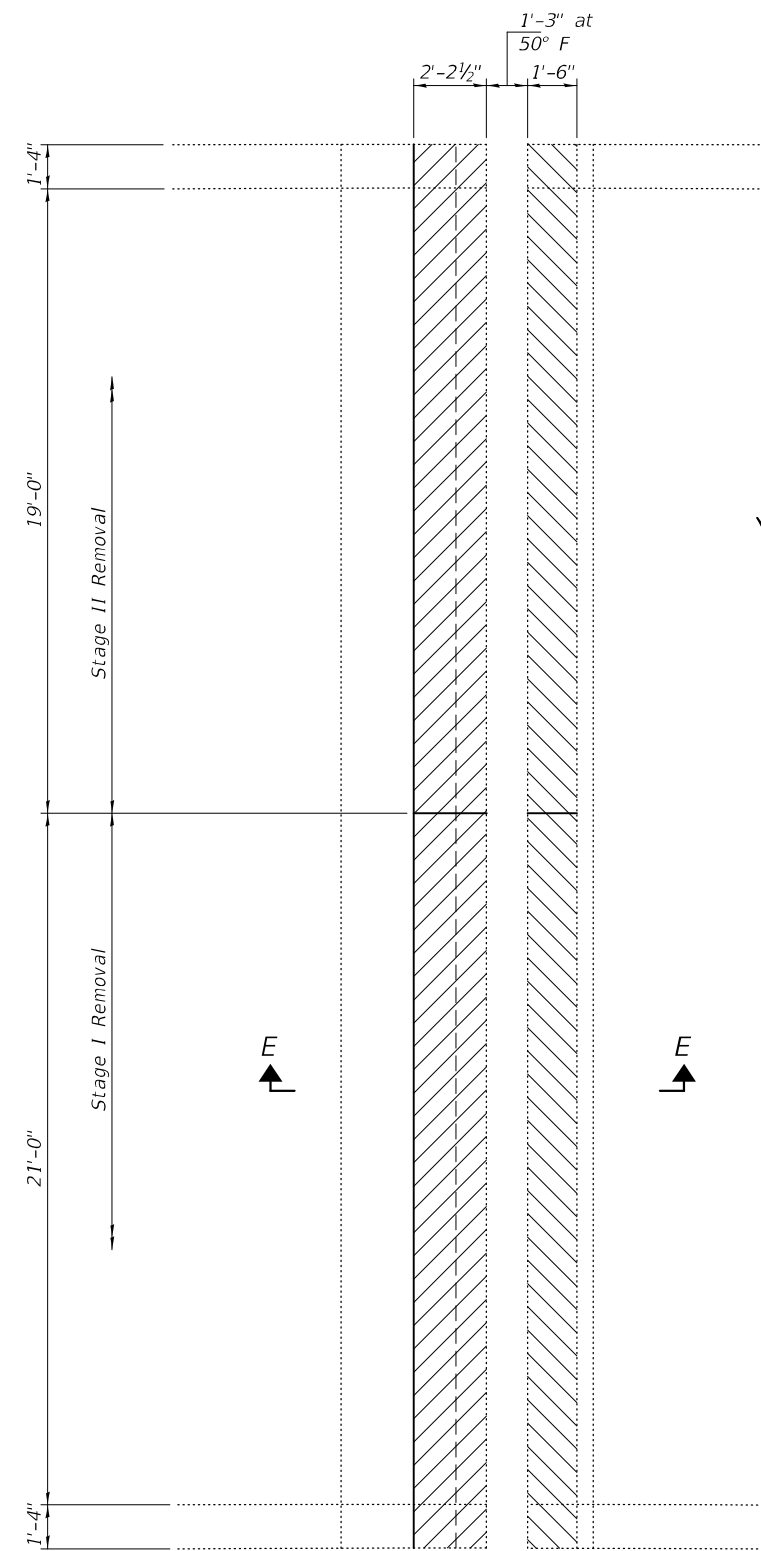
*** Epoxy grout u(E) bars in 9" min. holes according to Article 584 of the Standard Specifications.

**** Expected lateral movement = 1/2".

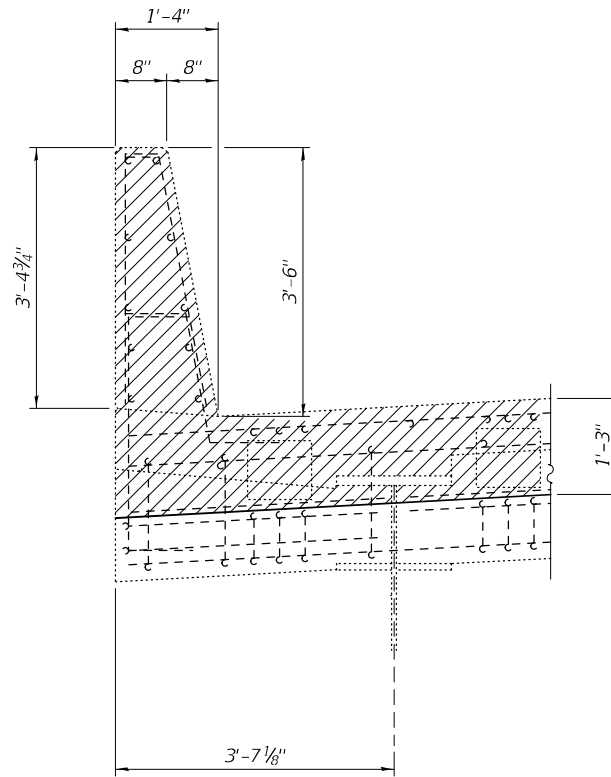
BILL OF MATERIAL

Bar	No.	Size	Length	Shape
a(E)	44	#5	21'-0"	—
d(E)	8	#5	3'-8"	┌
d1(E)	8	#5	3'-9"	└
d2(E)	4	#5	3'-6"	└
d3(E)	4	#5	3'-5"	└
d4(E)	8	#5	3'-9"	┌
d5(E)	8	#5	3'-10"	└
d6(E)	8	#5	3'-8"	┌
Concrete Removal		Cu. Yd.	19.2	
Concrete Superstructure		Cu. Yd.	19.2	
Bar Splicers		Each	22	
Protective Coat		Sq. Yd.	38	
Reinforcement Bars, Epoxy Coated		Pound	1150	
Modular Expansion Joint 24"		Foot	43	

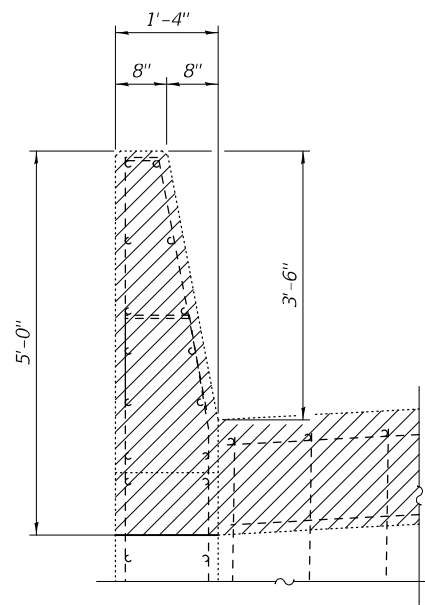
Placement of reinforcement within the joint block needs to be coordinated with the joint manufacturer.



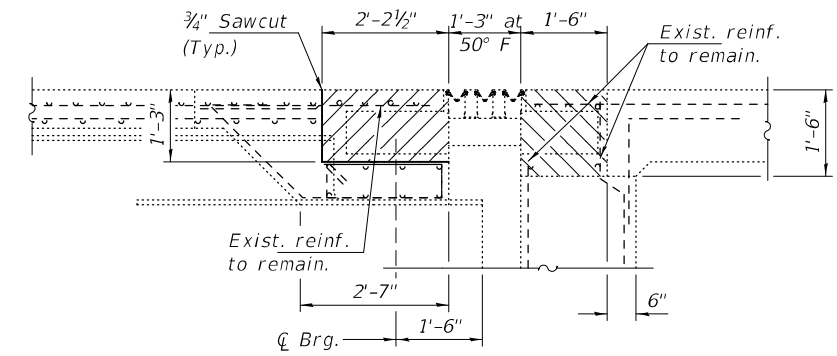
CONCRETE REMOVAL DETAILS
 (East Abutment)



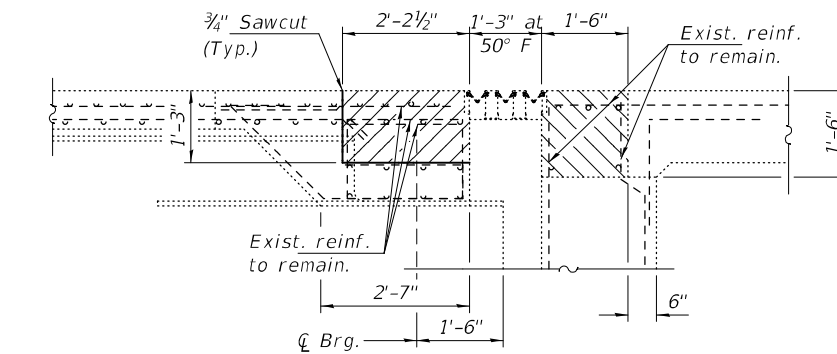
SECTION F-F



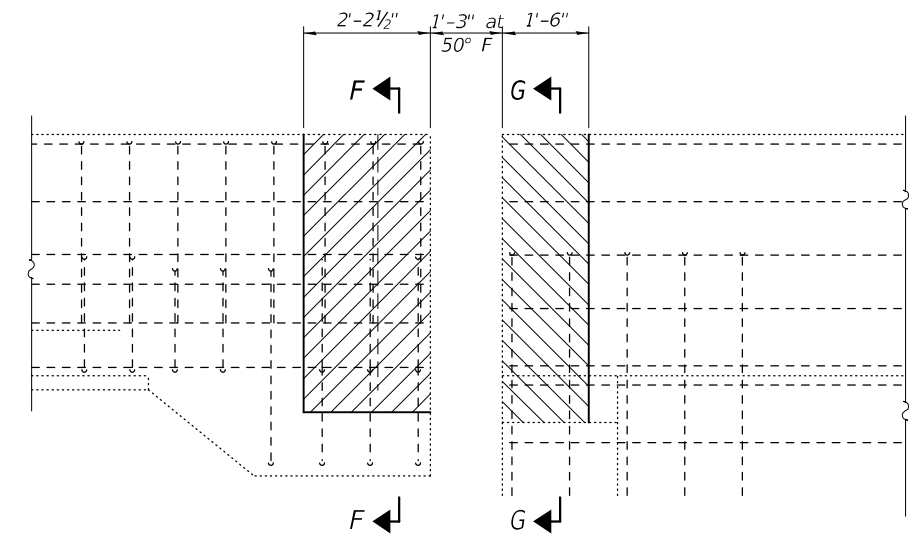
SECTION G-G



SECTION E-E
 (At Support Box)



SECTION E-E
 (Between Support Boxes)



OUTSIDE VIEW AT EAST PARAPET

Notes:
 Hatched areas indicate Concrete Removal.
 Cost of existing modular joint removal is included with Concrete Removal.

DESIGNED - VHV
 CHECKED - CCC
 DRAWN - daburdell
 CHECKED - VHV CCC

EXAMINED
 PASSED
 Timothy A. Daburdell
 ENGINEER OF STRUCTURAL SERVICES
 Carl R. Meyer
 ENGINEER OF BRIDGES AND STRUCTURES

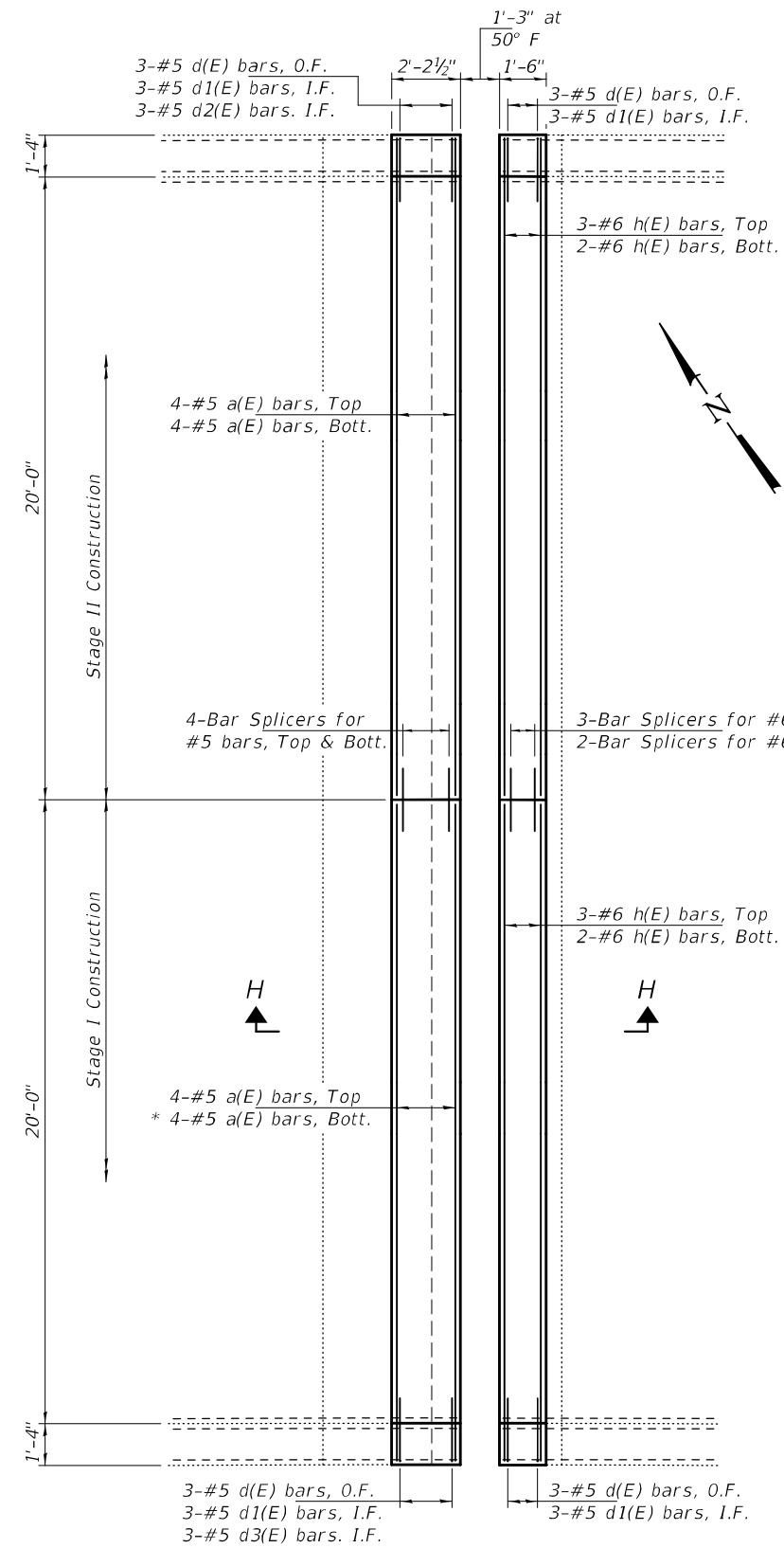
DATE - SEPTEMBER 30, 2021
 REVISED -
 REVISED -

STATE OF ILLINOIS
 DEPARTMENT OF TRANSPORTATION

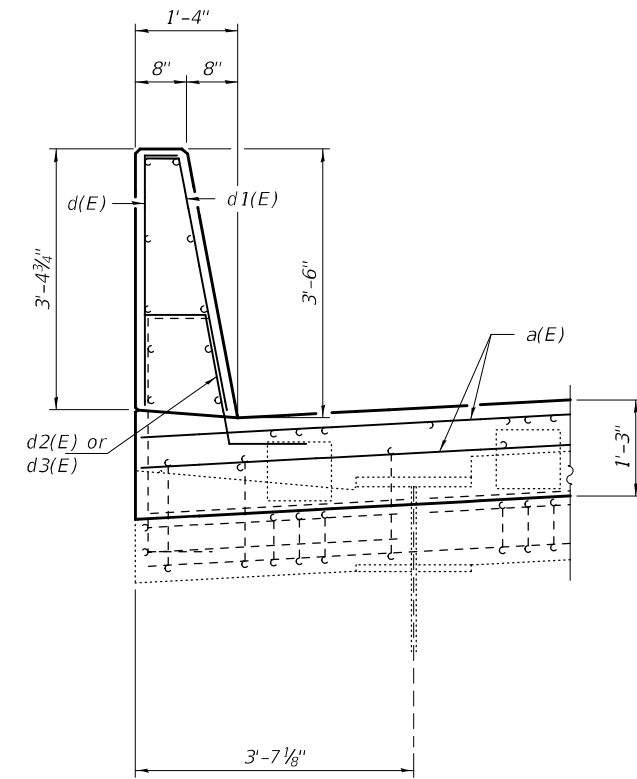
JOINT REMOVAL DETAILS - EAST ABUTMENT
 SN 082-0318 (EB)

SHEET NO. 5 OF 8 SHEETS

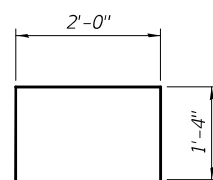
F.A.I. RTE.	SECTION	COUNTY	TOTAL SHEETS	SHEET NO.
70	82-2-1HVB-BJR-1	ST. CLAIR	18	13
CONTRACT NO. 76P05				
ILLINOIS FED. AID PROJECT				



CONCRETE REPLACEMENT DETAILS
(East Abutment)

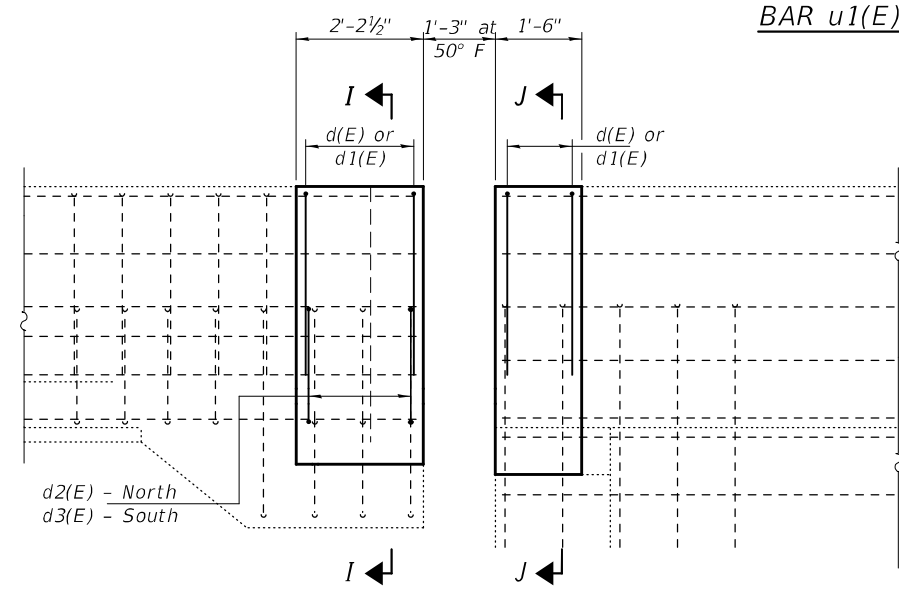


SECTION I-I

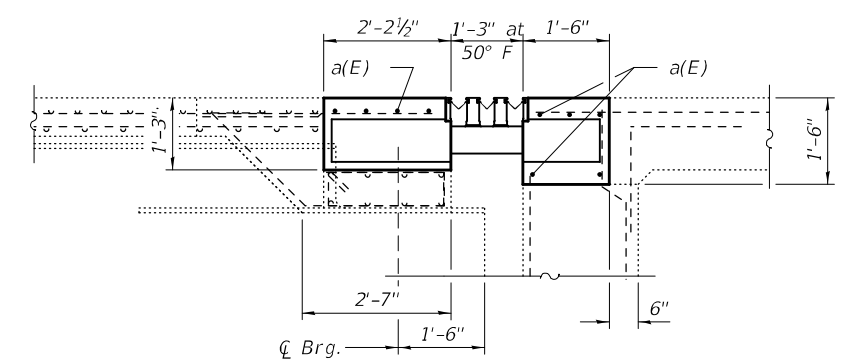


BAR u1(E)

* a1(E) and h(E) bars cut to fit between boxes.

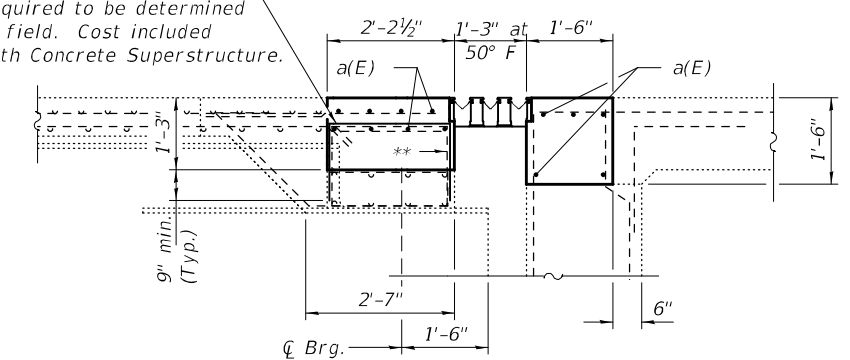


OUTSIDE VIEW AT EAST PARAPET
(North Parapet similar, except as noted.)



SECTION H-H
(At Support Box)

*** u1(E) bars at 12" cts. between boxes. Number required to be determined in field. Cost included with Concrete Superstructure.

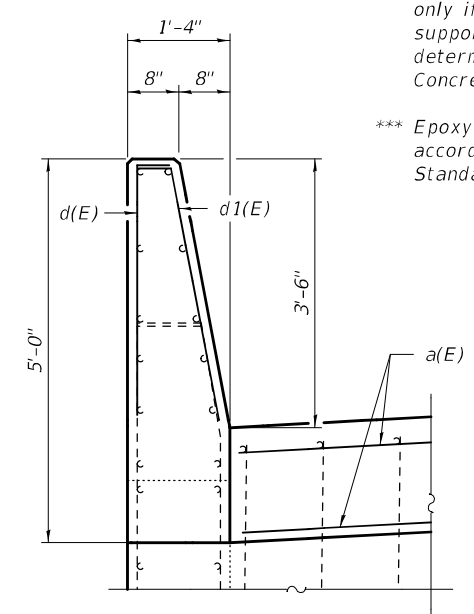


SECTION H-H
(Between Support Boxes)

** As required, cut existing stirrup flush only if it interferes with proposed support boxes. Number required to be determined in field. Cost included with Concrete Superstructure.

*** Epoxy grout u1(E) bars in 9" min. holes according to Article 584 of the Standard Specifications.

**** Expected lateral movement = 1/2".



SECTION J-J

Note:
See sheet 4 of 8 for bar bending diagrams.

BILL OF MATERIAL

Bar	No.	Size	Length	Shape
a(E)	16	#5	21'-0"	—
d(E)	12	#5	3'-8"	┌
d1(E)	12	#5	3'-9"	└
d2(E)	3	#5	3'-6"	~
d3(E)	3	#5	3'-5"	~
h(E)	10	#6	21'-0"	—
Concrete Removal		Cu. Yd.	10.3	
Concrete Superstructure		Cu. Yd.	10.3	
Bar Splicers		Each	13	
Protective Coat		Sq. Yd.	20	
Reinforcement Bars, Epoxy Coated		Pound	780	
Modular Expansion Joint 9"		Foot	43	

Placement of reinforcement within the joint block out needs to be coordinated with the joint manufacturer.

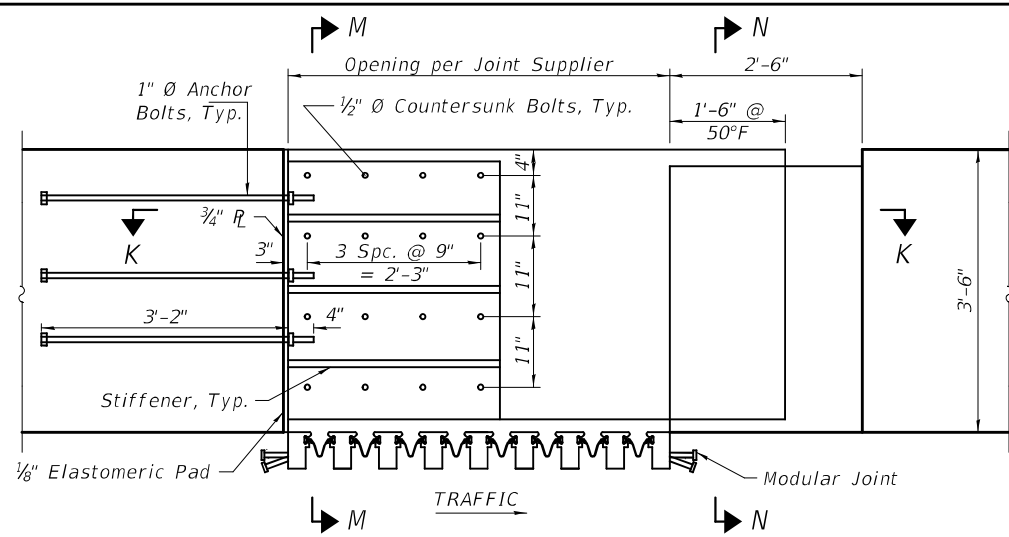
DESIGNED - VHV	EXAMINED - <i>Timothy A. Doolittle</i>	DATE - SEPTEMBER 30, 2021
CHECKED - CCC	ENGINEER OF STRUCTURAL SERVICES	
DRAWN - daburdell	PASSED - <i>Carl Ruyter</i>	REVISED -
CHECKED - VHV CCC	ENGINEER OF BRIDGES AND STRUCTURES	REVISED -

STATE OF ILLINOIS
DEPARTMENT OF TRANSPORTATION

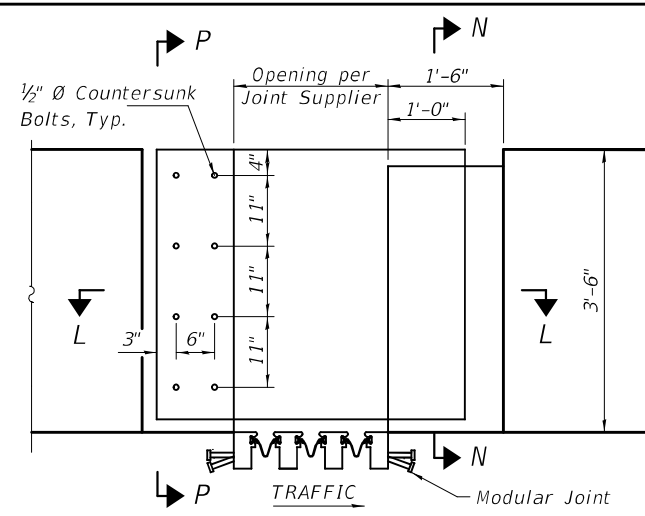
JOINT REPLACEMENT DETAILS - EAST ABUTMENT
SN 082-0318 (EB)

SHEET NO. 6 OF 8 SHEETS

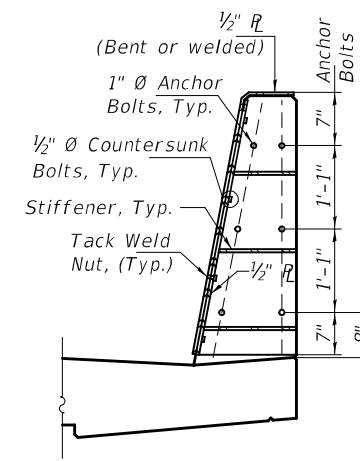
F.A.I. RTE.	SECTION	COUNTY	TOTAL SHEETS	SHEET NO.
70	82-2-1HV-BJR-1	ST. CLAIR	18	14
ILLINOIS			CONTRACT NO. 76P05	
FED. AID PROJECT				



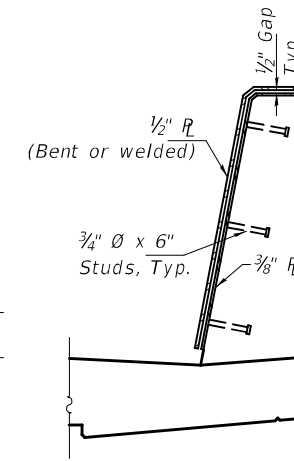
BARRIER PLATE ASSEMBLY DETAIL AT PIER 23



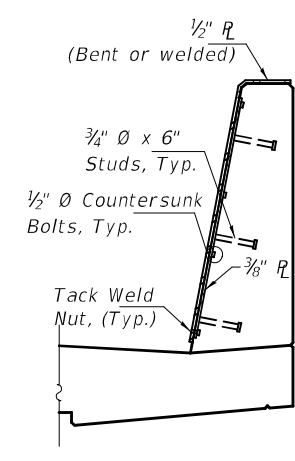
BARRIER PLATE ASSEMBLY DETAIL AT EAST ABUTMENT



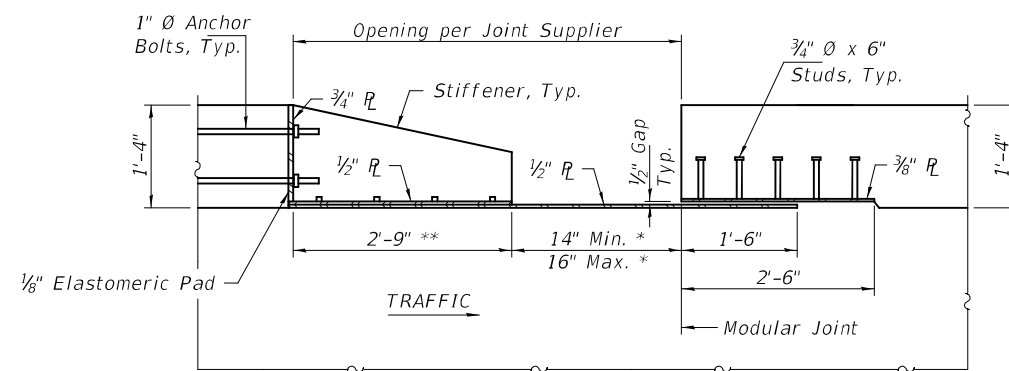
SECTION M-M
(Inside Parapets)



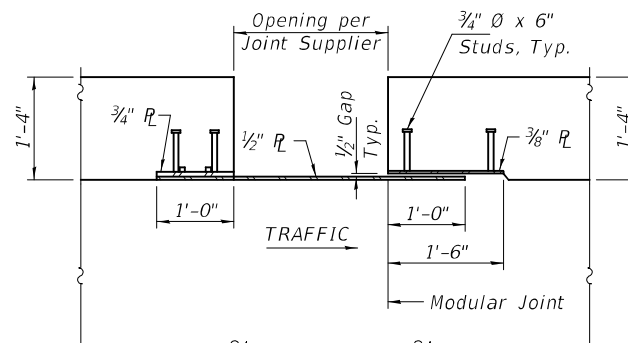
SECTION N-N
(Inside Parapets)



SECTION P-P
(Inside Parapets)

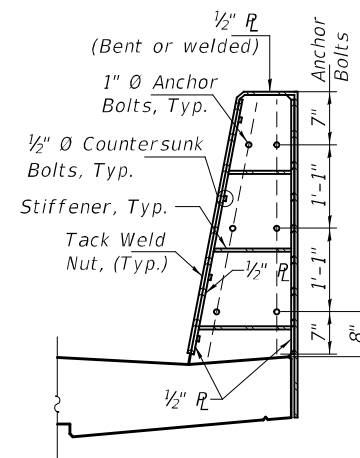


SECTION K-K
(Inside Parapets)

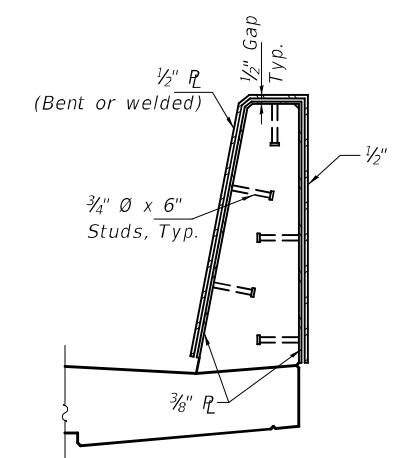


SECTION L-L
(Inside Parapets)

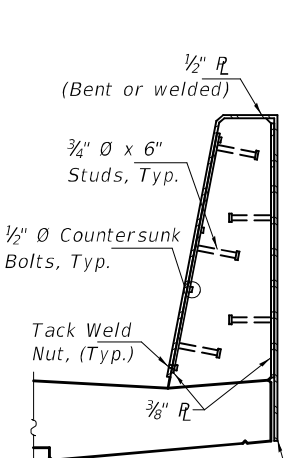
* Dimensions for T = 50° F
** Contractor to verify with Joint Supplier



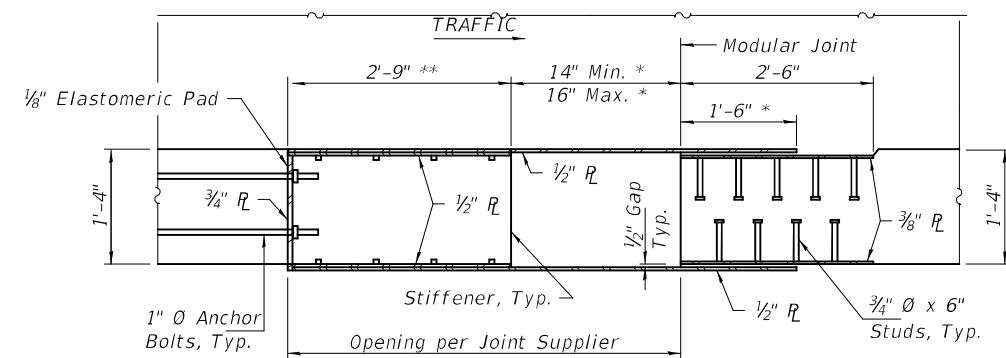
SECTION M'-M'
(Outside Parapets)



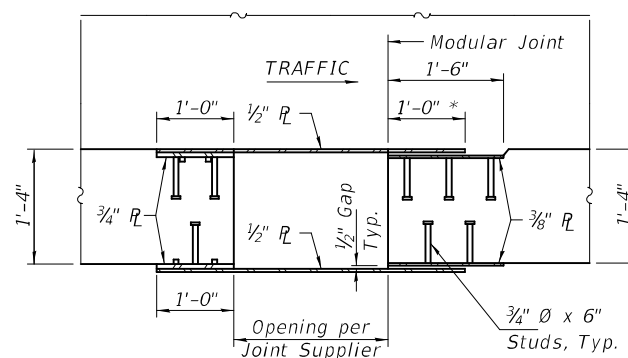
SECTION N'-N'
(Outside Parapets)



SECTION P'-P'
(Outside Parapets)



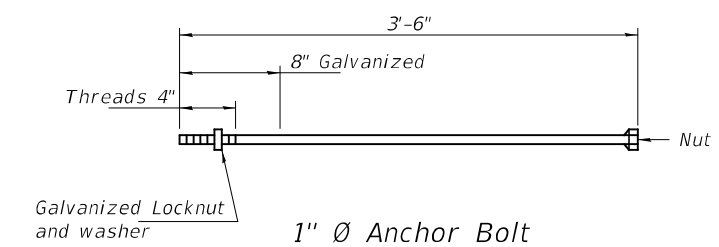
SECTION K'-K'
(Outside Parapets)



SECTION L'-L'
(Outside Parapets)

Notes:

1. Work this sheet with sheets 4 and 6 of 8.
2. Opening of 50°F is dependent upon modular expansion joint selection. Contractor is responsible for coordinating any revisions required due to deviations from dimensions shown.
3. All structural steel of the barrier plate assemblies shall be AASHTO M270 Grade 50 and galvanized according to AASHTO M111.
4. Payment for furnishing and installing the barrier plate assemblies shall be included of Modular Expansion Joints.
5. Plug end of nut to maintain void for bolt placement.
6. Countersunk bolts shall be in accordance with ASTM A307, Grade A.
7. Barrier plate assemblies shall be placed as shown for traffic direction, such that sliding plate is anchored on oncoming traffic side of joint.



DESIGNED - VHV	EXAMINED - <i>Timothy A. Daburdell</i>	DATE - SEPTEMBER 30, 2021
CHECKED - CCC	ENGINEER OF STRUCTURAL SERVICES	
DRAWN - <i>daburdell</i>	PASSED - <i>Carl R. Roper</i>	REVISED -
CHECKED - VHV CCC	ENGINEER OF BRIDGES AND STRUCTURES	REVISED -

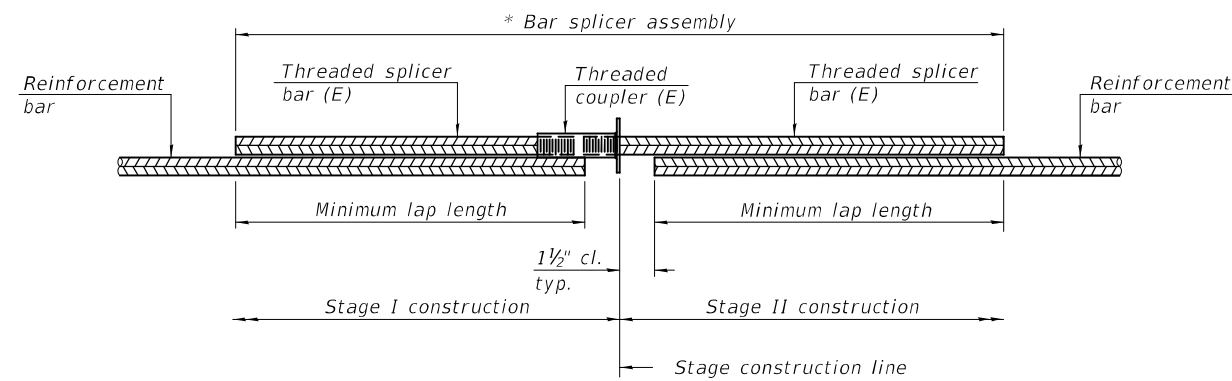
**STATE OF ILLINOIS
DEPARTMENT OF TRANSPORTATION**

**SLIDING PLATE DETAILS
SN 082-0318 (EB)**

SHEET NO. 7 OF 8 SHEETS

F.A.I. RTE.	SECTION	COUNTY	TOTAL SHEETS	SHEET NO.
70	82-2-1HVB-BJR-1	ST. CLAIR	18	15
CONTRACT NO. 76P05				

ILLINOIS FED. AID PROJECT

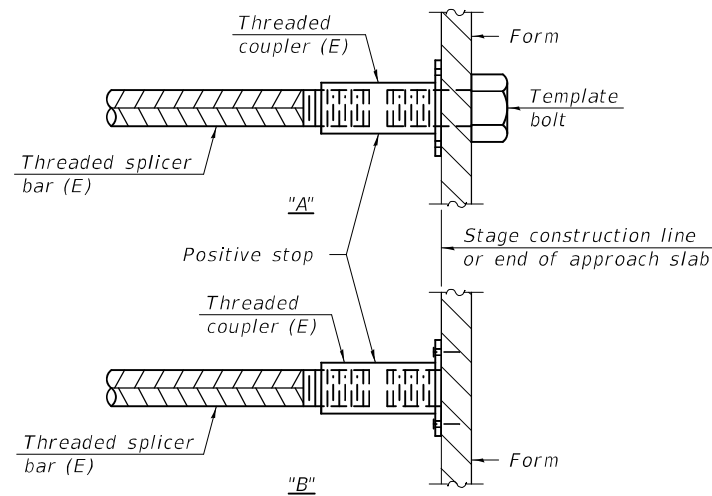


STANDARD BAR SPLICER ASSEMBLY PLAN
 (All components shall be provided from one supplier)

Threaded splicer bar length = min. lap length + 1 1/2" + thread length

* Epoxy not required on Bar Splicer Assembly components used in conjunction with black bars.

Location	Bar size	No. assemblies required	Minimum lap length
Deck	#5	30	3'-6"
E. Abut.	#6	5	4'-0"

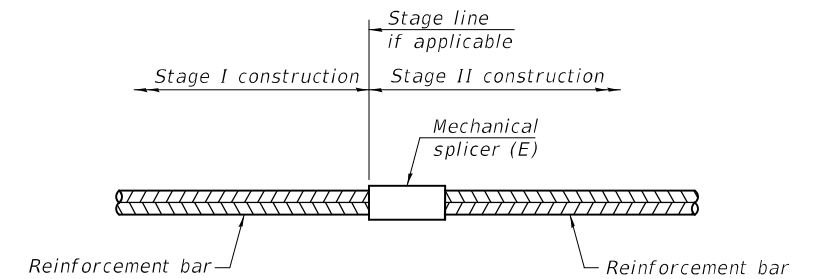


INSTALLATION AND SETTING METHODS

"A" : Set bar splicer assembly by means of a template bolt.

"B" : Set bar splicer assembly by nailing to wood forms or cementing to steel forms.

(E) : Indicates epoxy coating.



STANDARD MECHANICAL SPLICER

Location	Bar size	No. assemblies required

Notes:

Splicer bars shall be deformed with threaded ends and have a minimum 60 ksi yield strength.

All reinforcement shall be lapped and tied to the splicer bars.

Bar splicer assemblies shall be epoxy coated according to the requirements for reinforcement bars. See Section 508 of the Standard Specifications.

See approved list of bar splicer assemblies and mechanical splicers for alternatives.

BSD-1

1-1-2020

DESIGNED - VHV	EXAMINED	DATE - SEPTEMBER 30, 2021
CHECKED - CCC	<i>Timothy A. Daburdell</i> ENGINEER OF STRUCTURAL SERVICES	REVISED -
DRAWN - daburdell	PASSED	REVISED -
CHECKED - VHV CCC	<i>Carl R. Rieger</i> ENGINEER OF BRIDGES AND STRUCTURES	

STATE OF ILLINOIS
 DEPARTMENT OF TRANSPORTATION

BAR SPLICER ASSEMBLY AND MECHANICAL SPLICER DETAILS
 SN 082-0318 (EB)

SHEET NO. 8 OF 8 SHEETS

F.A.I. RTE.	SECTION	COUNTY	TOTAL SHEETS	SHEET NO.
70	82-2-1HVB-BJR-1	ST. CLAIR	18	16
CONTRACT NO. 76P05				
ILLINOIS		FED. AID PROJECT		