

STATE OF ILLINOIS
DEPARTMENT OF TRANSPORTATION

F.A.U. RTE.	SECTION	COUNTY	TOTAL SHEETS	SHEET NO.
9116A	32, 31RS-3	ST. CLAIR	26*	1
		ILLINOIS	CONTRACT NO. 76P55	

* 26 + 3 = 29 TOTAL SHEETS

D-98-060-21

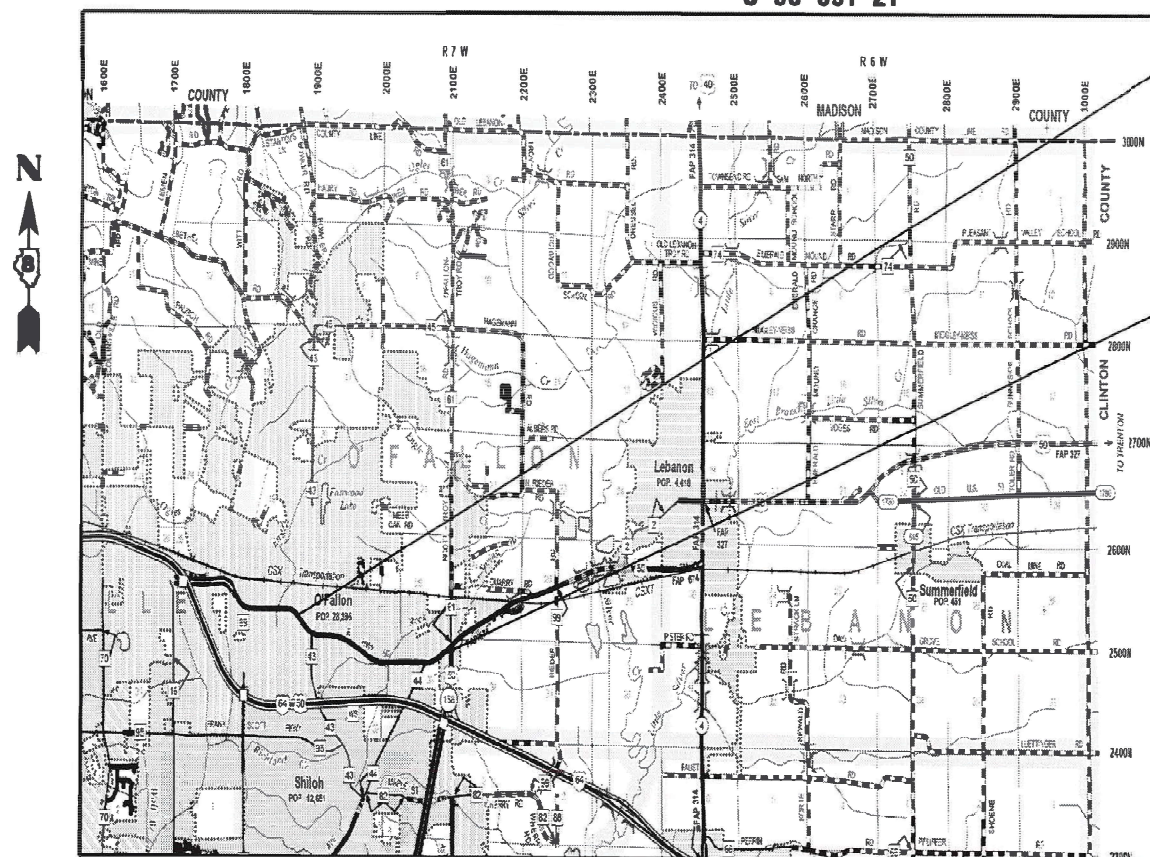


FOR INDEX OF SHEETS, SEE SHEET NO. 2

**PROPOSED
HIGHWAY PLANS**

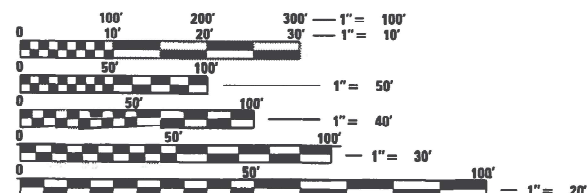
FAU 9166A ROUTE US 050
SECTION 32, 31RS-3
PROJECT COVD-L166(294)
RESURFACING- STANDARD OVERLAY
ST. CLAIR COUNTY

C-98-091-21



PROJECT STARTS
STA. 340+10
LATITUDE: 38.587692
LONGITUDE: -89.914853

PROJECT ENDS
STA. 445+70
LATITUDE: 38.583272
LONGITUDE: -89.874047



FULL SIZE PLANS HAVE BEEN PREPARED USING STANDARD ENGINEERING SCALES. REDUCED SIZED PLANS WILL NOT CONFORM TO STANDARD SCALES. IN MAKING MEASUREMENTS ON REDUCED PLANS, THE ABOVE SCALES MAY BE USED.

J.U.L.I.E.
JOINT UTILITY LOCATION INFORMATION FOR EXCAVATORS
1-800-892-0123
OR 811

PROJECT ENGINEER: CHERYL KEPLAR (618) 346-3123
PROJECT CONTACT: TONI MANN (618) 346-3189

CONTRACT NO. 76P55

GROSS LENGTH = 10560FT. = 2.00MILE
NET LENGTH = 10560FT. = 2.00MILE

FUNCTIONAL CLASSIFICATION
URBAN MINOR ARTERIAL
2022 ADT = 14,700
PV = 95.2% SU = 3.1% MU = 1.7%

STATE OF ILLINOIS
DEPARTMENT OF TRANSPORTATION

SUBMITTED *Aug. 13 20 21*
Kath Roberts
REGIONAL ENGINEER

October 1 20 21
[Signature]
ENGINEER OF DESIGN AND ENVIRONMENT

October 20 21
Stephen M. Smith
DIRECTOR OF HIGHWAYS PROJECT IMPLEMENTATION

PRINTED BY THE AUTHORITY
OF THE STATE OF ILLINOIS

INDEX OF SHEETS

- 1 COVER SHEET
- 2 GENERAL NOTES, INDEX OF SHEETS, HIGHWAY STANDARDS AND COMMITMENTS
- 3-4 SUMMARY OF QUANTITY
- 5-8 TYPICAL SECTION
- 9-12 SCHEDULE OF QUANTITIES
- 13 LOCATION MAP
- * 14-21 FYI SHEETS
- 22-26 DETECTOR LOOP DETAILS

* INCLUDES SHEETS 21A - 21C

HIGHWAY STANDARDS

- 000001-08 STANDARDS SYMBOLS ABBREVIATIONS & PATTERNS
- 001006 DECIMAL OF INCH
- 420001-09 PAVEMENT JOINTS
- 442201-03 CLASS C & D PATCHES
- 701301-04 LANE CLOSURE 2 LANE 2 WAY SHORT TIME OPERATION
- 701306-04 LANE CLOSURE 2 LANE 2 WAY SLOW MOVE OPERATION DAY ONLY 45MPH OR MORE
- 701311-03 LANE CLOSURE 2 LANE 2 WAY MOVING OPERATION DAY ONLY
- 701336-07 LANE CLOSURE 2 LANE 2 WAY WORK AREAS IN SERIES 45MPH OR MORE
- 701501-06 URBAN LANE CLOSURE 2 LANE 2 WAY- UNDIVIDED
- 701502-09 URBAN LANE CLOSURE 2 LANE 2 WAY WITH BIDIRECT LEFT TURN LANE
- 701901-08 TRAFFIC CONTROL DEVICES
- 780001-05 TYPICAL PAVEMENT MARKINGS
- 781001-04 TYPICAL APPLICATION RAISED REFLECTIVE PAVEMENT MARKERS
- 886001-01 DETECTOR LOOP INSTALLATION
- 886006-01 TYPICAL LAYOUTS FOR DETECTION LOOPS
- 701426-09 LANE CLOSURE, MULTILANE, INTERMITTENT OR MOVING OPERATIONS, 45 MPH OR MORE

NO COMMITMENTS

NO COMMITMENTS

GENERAL NOTES

1. UTILITIES KNOWN TO HAVE FACILITIES IN THE PROJECT AREA.
 AMEREN ILLINOIS
 AT&T ILLINOIS
 CHARTER COMMUNICATIONS, INC.
 CLEARWAVE COMMUNICATIONS
 FIDELITY COMMUNICATION III, INC.
 VERIZON BUSINESS
 CITY OF O'FALLON
2. NO SURVEY WAS PERFORMED FOR THIS PROJECT AND THE PLANS WERE CREATED USING MICROFILM AND FIELD MEASUREMENTS.
3. THE THICKNESS OF HOT-MIX ASPHALT SURFACE MIXTURES SHOWN ON THE PLANS IS THE NOMINAL THICKNESS. DEVIATIONS MAY OCCUR DUE TO IRREGULARITIES IN THE EXISTING SURFACE OR BASE ON WHICH THE BITUMINOUS MIXTURE IS PLACED.
4. THE VARIOUS THICKNESSES OF BITUMINOUS SURFACE REMOVAL SHOWN ON THE PLANS ARE THE AVERAGE THICKNESSES BASED UPON CONTROLLING THICKNESS AS INDICATED. DEVIATIONS FROM THE NOMINAL THICKNESS WILL BE PERMITTED WHEN SUCH DEVIATIONS OCCUR DUE TO IRREGULARITIES IN THE EXISTING SURFACE. BITUMINOUS SURFACE REMOVAL HAS BEEN INCLUDED IN THE PLANS FOR THE PURPOSE OF REMOVING HIGH IRREGULARITIES AND TO ESTABLISH CROSS SLOPE.

GENERAL NOTES

5. THE USE OF VIBRATORY ROLLERS WILL NOT BE PERMITTED WITHIN THE CITY LIMITS OF O'FALLON FOR. THIS DOES NOT RELIEVE THE CONTRACTOR OF DENSITY REQUIREMENTS FOR THE CONSTRUCTION OF THE BITUMINOUS PAVEMENTS AS SPECIFIED IN SECTIONS 406 & 407 OF THE STANDARD SPECIFICATIONS.
6. NO OVERNIGHT LANE CLOSURES WILL BE PERMITTED.
7. FLAGGERS SHALL BE REQUIRED AT ALL TIMES DURING PATCHING OPERATIONS.
8. THE RESIDENT ENGINEER SHALL VERIFY THE EXISTENCE OF HIGHWAY LIGHTING AND/OR INTELLIGENT TRANSPORTATION SYSTEMS (I.T.S.) UTILITIES WITHIN THE PROJECT LIMITS. IF HIGHWAY LIGHTING AND/OR I.T.S. EXISTS WITHIN THE PROJECT LIMITS, AND IF THESE ITEMS REQUIRE LOCATING, THE CONTRACTOR SHALL BE DIRECTED TO DO SO ACCORDING TO SECTION 803 OF THE STANDARD SPECIFICATIONS.
9. TWO CHANGEABLE MESSAGE SIGNS SHALL BE REQUIRED FOR THIS PROJECT. THEY SHALL BE PLACED TWO WEEKS PRIOR TO ANY LANE CLOSURE. THE CHANGEABLE MESSAGE SIGNS SHALL BE PLACED ALONG US 50 AS DIRECTED BY THE ENGINEER.
10. THE DEPARTMENT STRONGLY ENCOURAGES THE PRIME CONTRACTOR AND THEIR APPROVED SUB-CONTRACTORS TO HIRE MINORITY, WOMEN AND DISADVANTAGED INDIVIDUALS FROM ITS FEDERALLY FUNDED HIGHWAY CONSTRUCTION CAREERS TRAINING PROGRAM (HCCTP) TO HELP MEET WORKFORCE AND TRAINEE GOALS. THIS PROGRAM IS TRAINING MINORITIES, WOMEN AND DISADVANTAGED INDIVIDUALS IN HIGHWAY CONSTRUCTION-RELATED SKILLS, E.G., MATH FOR THE TRADES, JOB READINESS, TECHNICAL SKILLS COURSEWORK (CARPENTRY, CONCRETE FLATWORK, BLUEPRINT READING, SITE PLANS, SITE WORK, TOOLS USE, ETC.) AND OSHA 10 HOUR CERTIFICATION, TO PREPARE THEM FOR A CAREER IN THE HIGHWAY CONSTRUCTION TRADES. GRADUATES ARE WELL-TRAINED AND READY TO BECOME PRODUCTIVE ENTRY-LEVEL CONSTRUCTION WORKERS. CONTACT THE DISTRICT 8 EEO OFFICE AT 618-346-3360 AND/OR THE HCCTP COORDINATOR AT 618-874-6528 TO LEARN MORE ABOUT THE PROGRAM AND FOR ASSISTANCE IN MEETING WORKFORCE AND TRAINEE GOALS.
11. ALL TURF AREAS DISTURBED BY THE CONTRACTOR SHALL BE SEEDED WITH THE APPROPRIATE EROSION CONTROL, AS DIRECTED BY THE ENGINEER, AT THE CONTRACTOR'S EXPENSE.
12. THE PROPOSED PAVEMENT MARKING SHALL MATCH THE LOCATIONS OF THE EXISTING PAVEMENT MARKING, AS DIRECTED BY THE ENGINEER.
13. THE INTENT OF THE MILLING IS TO REMOVE THE HMA RESURFACING ONLY. THE UNDERLYING CONCRETE SHALL NOT BE DISTURBED.
14. THE VOID IN THE PAVEMENT WHICH RESULTS FROM THE RAISED REFLECTIVE PAVEMENT MARKER REMOVAL SHALL BE REPAIRED WITH MATERIAL AS DIRECTED BY THE ENGINEER. THE MATERIAL AND WORK SHALL BE PAID FOR IN ACCORDANCE WITH ARTICLE 783 OF THE STANDARD SPECIFICATIONS. THE PROPOSED PAVEMENT MARKINGS SHALL MATCH THE LOCATION OF EXISTING PAVEMENT MARKING AS DIRECTED BY ENGINEER.

MIXTURE REQUIREMENTS

MIXTURE USE	SURFACE	BINDER	SHOULDERS (LOWER)	SHOULDERS (SURFACE)	PATCHING
AC/PG	PG 64-22	PG 64-22	PG 64-22	PG 64-22	PG 64-22
RAP % (MAX)	SEE SPECIAL PROVISION	SEE SPECIAL PROVISION	SEE SPECIAL PROVISION	SEE SPECIAL PROVISION	SEE SPECIAL PROVISION
DESIGN AIR VOIDS	4.0% @ Ndes=70	4.0% @ Ndes=70	4.0% @ Ndes=30	4.0% @ Ndes=30	4.0% @ Ndes=70
MIX COMPOSITION (GRADATION)	IL 9.5 FG	IL 9.5 FG	IL 19.0L	IL 9.5L	IL 19.0
FRICTION AGG	MIXTURE "D"	MIXTURE "C"			MIXTURE "B"
QUALITY MGMT PROGRAM	QCP	QCP	QC/QA	QC/QA	QC/QA

MODEL: \\MODELNAME\$
 FILE: NAME: pw \\userpw\benley.com\PM\DOT\Documents\DOT_Offices\District_8\Projects\0876F55\CADD\Drawings\Sheet\0876F55-sh-egenote.dgn

USER NAME = agboolato	DESIGNED -	REVISED -
	DRAWN -	REVISED -
PLOT SCALE = 1000.0000 ' / in.	CHECKED -	REVISED +
PLOT DATE = 9/17/2021	DATE -	REVISED +

**STATE OF ILLINOIS
DEPARTMENT OF TRANSPORTATION**

**INDEX OF SHEETS, HIGHWAY STANDARDS.
GENERAL NOTES, COMMITMENTS**

SCALE: SHEET OF SHEETS STA. TO STA.

F A U R T E.	SECTION	COUNTY	TOTAL SHEETS	SHEET NO.
9166A	32.31R5-3	ST. CLAIR	26	2
			CONTRACT NO. 76P55	
		ILLINOIS	FED. AID PROJECT	

REV. - MS

CODE NO.	ITEM	UNIT	TOTAL QUANTITY	CONSTR. CODE	
				100% FEDERAL	
				ROADWAY 0005	URBAN
25000210	SEEDING, CLASS 2A	ACRE	0.1	0.1	
40600290	BITUMINOUS MATERIALS (TACK COAT)	POUND	16954.0	16954.0	
25000400	NITROGEN FERTILIZER NUTRIENT	POUND	8.0	8.0	
40600982	HOT-MIX ASPHALT SURFACE REMOVAL - BUTT JOINT	SQ YD	552.0	552.0	
25000500	PHOSPHORUS FERTILIZER NUTRIENT	POUND	8.0	8.0	
40600990	TEMPORARY RAMP	SQ YD	630.0	630.0	
25000600	POTASSIUM FERTILIZER NUTRIENT	POUND	8.0	8.0	
40602970	HOT-MIX ASPHALT BINDER COURSE, 1L-9.5FG, N70	TON	2637.0	2637.0	
25000700	AGRICULTURAL GROUND LIMESTONE	TON	0.2	0.2	
40604012	HOT-MIX ASPHALT SURFACE COURSE, 1L-9.5FG, MIX "D", N70	TON	3164.8	3164.8	
44000160	HOT-MIX ASPHALT SURFACE REMOVAL, 2 3/4"	SQ YD	39547.3	39547.3	
44200140	PAVEMENT PATCHING, TYPE I, 12 INCH	SQ YD	4.7	4.7	
44200144	PAVEMENT PATCHING, TYPE II, 12 INCH	SQ YD	170.7	170.7	
44200148	PAVEMENT PATCHING, TYPE III, 12 INCH	SQ YD	76.7	76.7	
44200150	PAVEMENT PATCHING, TYPE IV, 12 INCH	SQ YD	114.4	114.4	
44200168	PAVEMENT PATCHING, TYPE II, 14 INCH	SQ YD	261.9	261.9	
44200172	PAVEMENT PATCHING, TYPE III, 14 INCH	SQ YD	21.3	21.3	
44200174	PAVEMENT PATCHING, TYPE IV, 14 INCH	SQ YD	198.7	198.7	

CODE NO.	ITEM	UNIT	TOTAL QUANTITY	CONSTR. CODE	
				100% FEDERAL	
				ROADWAY 0005	URBAN
44200192	PAVEMENT PATCHING, TYPE II, 16 INCH	SQ YD	427.0	427.0	
44200196	PAVEMENT PATCHING, TYPE III, 16 INCH	SQ YD	103.3	103.3	
44200198	PAVEMENT PATCHING, TYPE IV, 16 INCH	SQ YD	500.7	500.7	
44200216	PAVEMENT PATCHING, TYPE I, 20 INCH	SQ YD	16.0	16.0	
44200217	PAVEMENT PATCHING, TYPE II, 20 INCH	SQ YD	101.1	101.1	
44200219	PAVEMENT PATCHING, TYPE III, 20 INCH	SQ YD	20.2	20.2	
44200221	PAVEMENT PATCHING, TYPE IV, 20 INCH	SQ YD	85.3	85.3	
48102100	AGGREGATE WEDGE SHOULDER, TYPE B	TON	144.4	144.4	
48203100	HOT-MIX ASPHALT SHOULDERS	TON	288.2	288.2	
67000400	ENGINEER'S FIELD OFFICE, TYPE A	CAL MO	5.0	5	
67100100	MOBILIZATION	L SUM	1.0	1.0	
70100460	TRAFFIC CONTROL AND PROTECTION, STANDARD 701306	L SUM	1.0	1	
70100600	TRAFFIC CONTROL AND PROTECTION, STANDARD 701336	L SUM	1.0	1	
70102620	TRAFFIC CONTROL AND PROTECTION, STANDARD 701501	L SUM	1.0	1	

MODEL: \\MODELNAME\$
 FILE: \\NAME\$.prn
 PLOT DATE: 8/16/2021

REV. - MS

REV-SEP

USER NAME = manntm	DESIGNED -	REVISED -	STATE OF ILLINOIS DEPARTMENT OF TRANSPORTATION	SUMMARY OF QUANTITIES			F A U RTE.	SECTION	COUNTY	TOTAL SHEETS	SHEET NO.	
PLOT SCALE = 100.0000' / in.	DRAWN -	REVISED -					9116	32.31RS-3	ST. CLAIR	26	3	
PLOT DATE = 8/16/2021	CHECKED -	REVISED +		SCALE:	SHEET 1	OF 2	SHEETS	STA.	TO STA.	ILLINOIS FED. AID PROJECT		
	DATE -	REVISED +										

LOCATION		LENGTH	WIDTH	AREA	HMA SURFACE REMOVAL 2.75"	BITUMINOUS MATERIAL (TACK COAT)	HMA BINDER COURSE 1.25"	HMA SURFACE COURSE 1.5"	LONGITUDINAL JOINT SEALANT	MATERIAL TRANSFER DEVICE
		FT	FT	SQFT	SQYD	LBS	TONS	TONS	FT	TON
340+10.00	351+91.00	1181.0	24.0	28344.0	3149.3	1417.2	220.5	264.5	1181.0	485.0
351+91.00	357+00.00	509.0	36.0	18324.0	2036.0	916.2	142.5	171.0	509.0	313.5
357+00.00	375+00.00	1800.0	36.0	64800.0	7200.0	3240.0	504.0	604.8	1800.0	1108.8
375+00.00	379+02.00	402.0	36.0	14472.0	1608.0	723.6	112.6	135.1	402.0	247.6
379+02.00	381+80.00	278.0	IRREGULAR	12654.0	1406.0	632.7	98.4	118.1	278.0	216.5
381+80.00	399+80.00	1800.0	36.0	64800.0	7200.0	3240.0	504.0	604.8	1800.0	1108.8
399+80.00	403+48.00	368.0	48.0	17664.0	1962.7	883.2	137.4	164.9	368.0	302.3
403+48.00	412+00.00	852.0	36.0	30672.0	3408.0	1533.6	238.6	286.3	852.0	524.8
412+00.00	414+53.00	253.0	IRREGULAR	7590.0	843.3	379.5	59.0	70.8	253.0	129.9
414+53.00	439+30.00	2477.0	24.0	59448.0	6605.3	2972.4	462.4	554.8	2477.0	1017.2
439+30.00	443+85.00	455.0	IRREGULAR	13650.0	1516.7	682.5	106.2	127.4	455.0	233.6
443+85.00	445+70.07	185.1	36.0	6662.5	740.3	333.1	51.8	62.2	185.1	114.0
TOTAL					37675.6	16954.0	2637.3	3164.8	10560.1	5802.0

PAVEMENT PATCHING SCHEDULE 14"										
STATION	LANE	SIDE	SIZE				TYPE II (SQ YD)	TYPE III (SQ YD)	TYPE IV (SQ YD)	
			LENGTH (FT)	WIDTH (FT)	DEPTH (IN)	PATCHING (SQ YD)				
359+32	WB	LEFT	8	12	14	10.7	10.7			
359+32	EB	RIGHT	10	12	14	13.3	13.3			
359+60	WB	LEFT	8	12	14	10.7	10.7			
359+60	EB	RIGHT	6	12	14	8.0	8.0			
360+01		CENTER	6	12.5	14	8.3	8.3			
360+01	EB	RIGHT	6	12	14	8.0	8.0			
361+80	EB	RIGHT	20	12	14	26.7			26.7	
362+41	EB	RIGHT	16	12	14	21.3		21.3		
363+12	WB	LEFT	15	6	14	10.0	10.0			
363+48	EB	RIGHT	6	12	14	8.0	8.0			
363+82	EB	RIGHT	26	12	14	34.7			34.7	
364+30	WB	LEFT	6	12	14	8.0	8.0			
364+30	EB	RIGHT	6	12	14	8.0	8.0			
363+98	WB	LEFT	38	12	14	50.7			50.7	
364+58	EB	RIGHT	6	12	14	8.0	8.0			
364+63	WB	LEFT	65	12	14	86.7			86.7	
403+78	WB	LEFT	6	13	14	8.7	8.7			
405+58	WB	LEFT	6	13	14	8.7	8.7			
407+72	WB	LEFT	20	6	14	13.3	13.3			
414+68	WB	LEFT	6	14	14	9.3	9.3			
414+61	EB	RIGHT	6	14	14	9.3	9.3			
414+69	EB	RIGHT	11	7	14	8.6	8.6			
414+80	EB	RIGHT	10	7	14	7.8	7.8			
415+18	WB	LEFT	6	14	14	9.3	9.3			
415+18	EB	RIGHT	6	14	14	9.3	9.3			
416+09	EB	RIGHT	7	6.5	14	5.1	5.1			
416+16	WB	LEFT	10	13	14	14.4	14.4			
416+16	EB	RIGHT	10	13	14	14.4	14.4			
417+73	WB	LEFT	6	13	14	8.7	8.7			
417+73	EB	RIGHT	6	13	14	8.7	8.7			
418+31	WB	LEFT	12	6	14	8.0	8.0			
437+98	WB	LEFT	6	13	14	8.7	8.7			
437+98	EB	RIGHT	6	13	14	8.7	8.7			
TOTALS (SQ YD)						261.9	21.3	198.7		

LOCATION		LENGTH	WIDTH	TEMPORARY RAMP	HMA SURFACE REMOVER (BUTT JOINT)
		FOOT	FOOT	SQYD	SQYD
334+00.90	PROJECT BEGINS	10.00	35.25	39.2	
334+00.90	ANNE AVE	2.00	50	11.1	11.1
336+33.90	S.OAK AVE	2.00	160	35.6	35.6
338+22.90	DALE AVE	2.00	60	13.3	13.3
342+57.90	S CHERRY ST	2.00	170	37.8	37.8
354+95.84	S LINCOLN AVE	2.00	270	60.0	60.0
356+42.84	SOUTHVIEW PLAZA 1	2.00	40	8.9	8.9
358+87.84	SOUTHVIEW PLAZA 2	2.00	40	8.9	8.9
361+77.84	WHITEHALL DR/PARKVIEW DR	2.00	180	40.0	40.0
369+97.84	PARK ENTRANCE PL	2.00	80	17.8	17.8
373+97.84	S HILGARD ST	2.00	55	12.2	12.2
375+73.84	SOUTHVIEW DR	2.00	70	15.6	15.6
376+91.84	S AUGUSTA ST	2.00	70	15.6	15.6
379+46.47	S SMILEY ST	2.00	90	20.0	20.0
386+91.47	JAMESTOWN RD	2.00	100	22.2	22.2
391+95.07	WEBER RD	2.00	120	26.7	26.7
396+66.07	SCHNUCKS 1	2.00	100	22.2	22.2
400+51.07	SCHNUCKS 2	2.00	100	22.2	22.2
409+02.07	7 HILLS RD/ TIMBER CREEK LN	2.00	170	37.8	37.8
412+32.07	CHURCH ENT	2.00	80	17.8	17.8
417+62.07	HAWTHORNE PL	2.00	95	21.1	21.1
428+62.07	COUNTY OAKS LN	2.00	95	21.1	21.1
439+99.07	LAKEPOINTE CENTRE DR	2.00	90	20.0	20.0
444+79.07	N MAIN ST	2.00	195	43.3	43.3
445+70.07	PROJECT ENDS	10.00	35	38.9	
TOTAL				629.2	551.1

MODEL: \\MODEL\MHMS
 FILE: \\MHE_P\public\paw_bendley.com\PIV\DOT\Documents\DOT Office\Dir\drct_8\Project\0876P55\CADD\DATA\CAD\Recess\0876P55-sh-c-schedule.dgn

USER NAME = agbo@ato	DESIGNED -	REVISED -
	DRAWN -	REVISED -
PLOT SCALE = 100,0000' / in.	CHECKED -	REVISED -
PLOT DATE = 9/20/2021	DATE -	REVISED -

**STATE OF ILLINOIS
DEPARTMENT OF TRANSPORTATION**

SCHEDULE OF QUANTITY

SCALE: SHEET 1 OF 4 SHEETS STA. TO STA.

F.A.U. RTE.	SECTION	COUNTY	TOTAL SHEETS	SHEET NO.
9166A	32.31RS-3	ST. CLAIR	26	9
CONTRACT NO. 76P55				
ILLINOIS FED. AID PROJECT				

LOCATION		LENGTH FOOT	NOTES	THERMOPLASTIC PAVEMENT MARKING/TEMPORARY PAVEMENT MARKING							
				4" LINE			12" LINE		24" LINE	LETTERS & SYMBOLS SQFT	
				WHITE SOLID FOOT	YELLOW SOLID FOOT	YELLOW SKIP DASH FOOT	WHITE SOLID FOOT	YELLOW SOLID FOOT	WHITE SOLID FOOT		
340+10.00	345+61.43		Single Skip Dash	1020	0	140	0	0	0	0	
345+61.43	351+90.00	1180.0	No Passing Zone	1340	665	160	70	0	0	0	
351+90.00	355+00.00	310.0	Left Turn Lane EB W/ No passing	678	840	0	150	63	24	15.6	
355+00.00	357+45.00	245.0	No Passing	559	398	0	110	0	24	31.2	
357+45.00	377+05.00	1960.0	Both Turning Lanes	3920	3920	980	144	0	0	280.8	
377+05.00	379+46.00	241.0	No Passing	582	588	0	80	30	24	31.2	
379+46.00	380+65.00	119.0	Left Turn Lane WB W/ No Passing	326	348	0	0	0	24	31.2	
380+65.00	398+50.00	1785.0	Two Way Left Turn	3570	3570	900	72	0	0	187.2	
398+50.00	400+50.00	200.0	Left Turn Lane EB W/ No passing	475	260	0	72	0	24	31.2	
400+50.00	403+48.00	298.0	Both Turning Lanes	850	440	50	96	0	36	93.6	
403+48.00	407+55.00	407.0	Both Turning Lanes	814	814	210	0	0	0	31.2	
407+55.00	409+02.00	147.0	Left Turn Lane EB W/ No passing	354	200	0	72	0	24	82.2	
409+02.00	410+60.00	158.0	Turning Lanes Going WB	381	210	0	72	0	24	83.2	
410+60.00	412+70.00	210.0	Both Turning Lanes	420	420	110	0	0	0	0	
412+70.00	414+53.00	183.0	No Passing	366	732	0	0	40	0	0	
414+53.00	425+25.00	1072.0	No Passing	2144	2144	0	0	0	0	0	
425+25.00	439+30.00	1405.0	Single Skip Dash	2810	0	350	0	0	0	0	
439+30.00	445+70.07	640.1	No Passing	1326	1082	0	0	140	0	15.6	
TOTAL				21935	16631	2900	938	273	204	914.2	
				41466			1211				

PAVEMENT PATCHING SCHEDULE 20"										
STATION	LANE	SIDE	SIZE			PAVEMENT PATCHING				
			LENGTH (FT)	WIDTH (FT)	DEPTH (IN)	PATCHING (SQ YD)	TYPE I (SQ YD)	TYPE II (SQ YD)	TYPE III (SQ YD)	TYPE IV (SQ YD)
340+95	WB	LEFT	6	13	19.5	8.7		8.7		
340+95	EB	RIGHT	6	13	19.5	8.7		8.7		
341+69	WB	LEFT	10	13	19.5	14.4		14.4		
341+69	EB	RIGHT	10	13	19.5	14.4		14.4		
342+02	WB	LEFT	6	13	19.5	8.7		8.7		
342+02	EB	RIGHT	6	13	19.5	8.7		8.7		
342+50	WB	LEFT	18	13	19.5	26.0			26.0	
342+50	EB	RIGHT	18	13	19.5	26.0			26.0	
342+94	WB	LEFT	6	13	19.5	8.7		8.7		
342+94	EB	RIGHT	8	13	19.5	11.6		11.6		
343+08	EB	RIGHT	50	6	19.5	33.3			33.3	
343+44	WB	LEFT	6	13	19.5	8.7		8.7		
343+44	EB	RIGHT	6	6	19.5	4.0	4.0			
343+28	WB	LEFT	6	13	19.5	8.7		8.7		
343+28	EB	RIGHT	6	6	19.5	4.0	4.0			
369+06	EB	RIGHT	6	6	12	4.0	4.0			
369+31	EB	RIGHT	6	6	12	4.0	4.0			
444+58	EB	RIGHT	14	13	19.5	20.2			20.2	
TOTALS (SQ YD)							16.0	101.1	20.2	85.3

LOCATION		LENGTH	WIDTH	OMMITTED SIDEROADS	HMA SURFACE REMOVAL 2.75"	HMA SHOULDERS	AGGREGATE WEDGE SHOULDER TYPE B
		FT	FT	FT	SQYD	TON	TON
340+10.00	351+91.00	1181.0	4.8	400.0	412.2	63.5	31.6
351+91.00	357+00.00	509.0			CURB/GUTTER		
357+00.00	375+00.00	1800.0			CURB/GUTTER		
375+00.00	379+02.00	402.0			CURB/GUTTER		
379+02.00	381+80.00	278.0			CURB/GUTTER		
381+80.00	399+80.00	1800.0			CURB/GUTTER		
399+80.00	403+48.00	368.0			CURB/GUTTER		
403+48.00	412+00.00	852.0	5.5	267.0	357.5	55.1	22.8
412+00.00	414+53.00	253.0	5.5	60.0	117.9	18.2	6.8
414+53.00	439+30.00	2477.0	3.0	0.0	825.7	127.2	66.2
439+30.00	443+85.00	455.0	3.0	0.0	151.7	23.4	12.2
443+85.00	445+70.07	185.1	3.0	165.0	6.7	1.0	4.9
TOTAL					1871.7	288.2	144.4

BITUMINOUS MATERIAL RATE	0.056	TONS/SQYD/IN
--------------------------	-------	--------------

MODEL: I:\MODEL\MAINT FILE NAME: p:\pub\cpx\benefy.com\PIV\DOT\Documents\DOT Office\Dir\drct_8\Project\087655\Cadd\pav\087655-sht-c-schedule.dgn

USER NAME = agbo@ato	DESIGNED -	REVISED -
	DRAWN -	REVISED -
PLOT SCALE = 100,0000' / in.	CHECKED -	REVISED -
PLOT DATE = 9/20/2021	DATE -	REVISED -

STATE OF ILLINOIS
DEPARTMENT OF TRANSPORTATION

SCHEDULE OF QUANTITY

SCALE: SHEET 2 OF 4 SHEETS STA. TO STA.

F.A.U. RTE.	SECTION	COUNTY	TOTAL SHEETS	SHEET NO.
9166A	32.31RS-3	ST. CLAIR	26	10
CONTRACT NO. 76P55				
ILLINOIS FED. AID PROJECT				

PAVEMENT PATCHING SCHEDULE 12"

STATION	LANE	SIDE	SIZE				TYPE				
			LENGTH (FT)	WIDTH (FT)	DEPTH (IN)	PATCHING (SQ YD)	TYPE I (SQ YD)	TYPE II (SQ YD)	TYPE III (SQ YD)	TYPE IV (SQ YD)	
365+42	WB	LEFT	36	12	12	48.0				48.0	
365+11	EB	RIGHT	15	6	12	10.0		10.0			
365+48	EB	RIGHT	6	12	12	8.0		8.0			
365+72	WB	LEFT	6	12	12	8.0		8.0			
366+12	WB	LEFT	36	6	12	24.0			24.0		
366+20	EB	RIGHT	7	6	12	4.7	4.7				
366+67	WB	LEFT	18	6	12	12.0		12.0			
368+66	EB	RIGHT	15	6	12	10.0		10.0			
369+87	EB	RIGHT	27	6	12	18.0			18.0		
369+78	WB	LEFT	8	6	12	5.3		5.3			
370+56	EB	RIGHT	8	12	12	10.7		10.7			
371+16	EB	RIGHT	6	12	12	8.0		8.0			
371+74	EB	RIGHT	6	12	12	8.0		8.0			
372+05	EB	RIGHT	6	12	12	8.0		8.0			
372+19	EB	RIGHT	10	12	12	13.3		13.3			
374+93	EB	RIGHT	24	6	12	16.0			16.0		
376+01	EB	RIGHT	28	6	12	18.7			18.7		
376+06	WB	LEFT	22	13	12	31.8				31.8	
376+56	WB	LEFT	6	13	12	8.7		8.7			
376+98	EB	RIGHT	6	12	12	8.0		8.0			
379+61	WB	LEFT	8	13	12	11.6		11.6			
380+18	EB	RIGHT	6	12	12	8.0		8.0			
391+58	WB	LEFT	15	6	12	10.0		10.0			
393+40	WB	LEFT	6	13	12	8.7		8.7			
394+48	WB	LEFT	10	13	12	14.4		14.4			
400+75	WB	LEFT	24	13	12	34.7				34.7	
TOTALS (SQ YD)							4.7	170.7	76.7	114.4	

PAVEMENT PATCHING SCHEDULE 16"

STATION	LANE	SIDE	SIZE				TYPE			
			LENGTH (FT)	WIDTH (FT)	DEPTH (IN)	PATCHING (SQ YD)	TYPE II (SQ YD)	TYPE III (SQ YD)	TYPE IV (SQ YD)	
344+67	EB	RIGHT	6	13	16	8.7	8.7			
345+32	WB	LEFT	6	13	16	8.7	8.7			
345+32	EB	RIGHT	6	13	16	8.7	8.7			
345+59	WB	LEFT	24	13	16	34.7			34.7	
345+59	EB	RIGHT	24	13	16	34.7			34.7	
345+93	WB	LEFT	6	13	16	8.7	8.7			
345+93	EB	RIGHT	6	13	16	8.7	8.7			
346+27	WB	LEFT	6	13	16	8.7	8.7			
346+27	EB	RIGHT	6	13	16	8.7	8.7			
346+48	WB	LEFT	6	13	16	8.7	8.7			
346+63	WB	LEFT	6	13	16	8.7	8.7			
346+63	EB	RIGHT	6	13	16	8.7	8.7			
347+02	WB	LEFT	6	13	16	8.7	8.7			
347+32	WB	LEFT	6	13	16	8.7	8.7			
347+58	WB	LEFT	6	13	16	8.7	8.7			
348+16	WB	LEFT	6	13	16	8.7	8.7			
348+16	EB	RIGHT	6	13	16	8.7	8.7			
348+94	WB	LEFT	6	13	16	8.7	8.7			
348+94	EB	RIGHT	6	13	16	8.7	8.7			
349+18	WB	LEFT	10	13	16	14.4	14.4			
349+18	EB	RIGHT	10	13	16	14.4	14.4			
349+35	WB	LEFT	6	12.5	16	8.3	8.3			
349+35	EB	RIGHT	6	12.5	16	8.3	8.3			
349+66	EB	RIGHT	6	12.5	16	8.3	8.3			
349+77	WB	LEFT	6	12.5	16	8.3	8.3			
349+77	EB	RIGHT	6	12.5	16	8.3	8.3			
349+92	EB	RIGHT	6	12.5	16	8.3	8.3			
350+10	WB	LEFT	6	12.5	16	8.3	8.3			
350+59	WB	LEFT	6	13	16	8.7	8.7			
350+59	EB	RIGHT	6	13	16	8.7	8.7			
351+16	WB	LEFT	6	13	16	8.7	8.7			
351+16	EB	RIGHT	6	13	16	8.7	8.7			
352+65	EB	RIGHT	6	13	16	8.7	8.7			
352+88	WB	LEFT	6	14	16	9.3	9.3			
352+88	EB	RIGHT	6	14	16	9.3	9.3			
353+18	WB	LEFT	6	15.5	16	10.3	10.3			
353+18	EB	RIGHT	6	15.5	16	10.3	10.3			
353+26	WB	LEFT	6	16.5	16	11.0	11.0			
353+26	EB	RIGHT	6	16.5	16	11.0	11.0			
353+24	EB	RIGHT	14	6	16	9.3	9.3			
353+28	WB	LEFT	83	6	16	55.3			55.3	
354+11	WB	LEFT	14	13.5	16	21.0		21.0		
354+11	EB	RIGHT	14	13.5	16	21.0		21.0		
354+18	WB	LEFT	37	12	16	49.3			49.3	
354+18	EB	RIGHT	37	12	16	49.3			49.3	
354+88	WB	LEFT	8	13	16	11.6	11.6			
354+70	EB	RIGHT	12	12	16	16.0		16.0		
354+70	EB	RIGHT	6	12	16	8.0	8.0			
355+64	WB	LEFT	66	6	16	44.0			44.0	
356+08	EB	RIGHT	76	12	16	101.3			101.3	
356+66	EB	RIGHT	42	12	16	56.0			56.0	
356+88	WB	LEFT	6	12	16	8.0	8.0			
357+10	EB	RIGHT	16	12	16	21.3		21.3		
357+78	EB	RIGHT	26	12	16	34.7			34.7	
357+96	WB	LEFT	31	12	16	41.3			41.3	
358+18	EB	RIGHT	10	12	16	13.3	13.3			
358+28		CENTER	6	12	16	8.0	8.0			
358+63	WB	LEFT	18	12	16	24.0		24.0		
359+32		CENTER	10	12	16	13.3	13.3			
360+01	WB	LEFT	6	12	16	8.0	8.0			
364+30		CENTER	6	12.5	16	8.3	8.3			
TOTALS (SQ YD)							427.0	103.3	500.7	

MODEL: \\MODEL\MAMS
 FILE NAME: p:\pub\cpx\bea\fy.com\PIV\DOT\Documents\DOT Office\Director_E\Projects\0876P55\CADD\DATA\CAD\patches\0876P55-site-schedule.dgn

USER NAME = agbo@ato	DESIGNED -	REVISED -
	DRAWN -	REVISED -
PLOT SCALE = 100,0000' / in.	CHECKED -	REVISED -
PLOT DATE = 9/20/2021	DATE -	REVISED -

**STATE OF ILLINOIS
DEPARTMENT OF TRANSPORTATION**

SUMMARY OF QUANTITIES

SCALE: SHEET 3 OF 4 SHEETS STA. TO STA.

F.A.U. RTE.	SECTION	COUNTY	TOTAL SHEETS	SHEET NO.
9166A	32.31RS-3	ST. CLAIR	26	11
CONTRACT NO. 76P55				
ILLINOIS		FED. AID PROJECT		

LOCATION		LENGTH	NOTES	TEMPORARY PAVEMENT MARKING REMOVAL	SHORT-TERM PAVEMENT MARKING	SHORT-TERM PAVEMENT MARKING REMOVAL	RAISED REFLECTIVE PAVEMENT MARKING	RAISED REFLECTIVE PAVEMENT MARKING REMOVAL
				SQFT	FOOT	SQFT	EACH	EACH
340+10.00	345+61.43		Single Skip Dash	386.7	165	18.20	7	7
345+61.43	351+90.00	1180.0	No Passing Zone	791.7	189	20.74	8	8
351+90.00	355+00.00	310.0	Left Turn Lane EB W/ No passing	782.6	93	10.23	11	11
355+00.00	357+45.00	245.0	No Passing	508.2	147	16.17	9	9
357+45.00	377+05.00	1960.0	Both Turning Lanes	3364.8	1,176	129.36	49	49
377+05.00	379+46.00	241.0	No Passing	579.2	72	7.95	12	12
379+46.00	380+65.00	119.0	Left Turn Lane WB W/ No Passing	303.9	71	7.85	7	7
380+65.00	398+50.00	1785.0	Two Way Left Turn	2939.2	1,071	117.81	45	45
398+50.00	400+50.00	200.0	Left Turn Lane EB W/ No passing	396.2	60	6.60	6	6
400+50.00	403+48.00	298.0	Both Turning Lanes	708.3	179	19.67	13	13
403+48.00	407+55.00	407.0	Both Turning Lanes	643.9	244	26.86	10	10
407+55.00	409+02.00	147.0	Left Turn Lane EB W/ No passing	386.9	44	4.85	4	4
409+02.00	410+60.00	158.0	Turning Lanes Going WB	400.2	47	5.21	7	7
410+60.00	412+70.00	210.0	Both Turning Lanes	316.7	126	13.86	5	5
412+70.00	414+53.00	183.0	No Passing	406.0	55	6.04	9	9
414+53.00	425+25.00	1072.0	No Passing	1429.3	322	35.38	13	13
425+25.00	439+30.00	1405.0	Single Skip Dash	1053.3	422	46.37	18	18
439+30.00	445+70.07	640.1	No Passing	958.3	192	21.12	32	32
TOTAL				16355.2	4675.2	514.3	264	264

GRADING AND SHAPING DITCHES, SPECIAL								
LOCATION		GRADING & SHAPING DITCHES	RIPRAP*	SEEDING CLASS 2A	NITROGEN FERTILIZER	PHOSPHORUS FERTILIZER NUTRIENT	POTASSIUM FERTILIZER NUTRIENT	AGRICULTURAL GROUND LIMESTONE
		FT	FT	ACRE	LBS	LBS	LBS	TON
409+02.07	414+02.07	375	100	0.1	8	8	8	0.2
* RIPRAP COST IS INCLUDED IN THE COST OF GRADING & SHAPING DITCHES, SPECIAL								

FERTILIZER RATE	80	LBS/ACRE
LIMESTONE RATE	2	TONS/ACRE

MODEL: \\MODEL\MAME
 FILE NAME: p:\pub\cpx\ben\p\com\PIV\DOT\Documents\DOT Office\District 8\Project\0876P55\CADD\DATA\CADD\Sheet\0876P55-sh-c-sch-supp.dwg

USER NAME = agbo@ato	DESIGNED -	REVISED -
	DRAWN -	REVISED -
PLOT SCALE = 100,0000' / in.	CHECKED -	REVISED -
PLOT DATE = 9/20/2021	DATE -	REVISED -

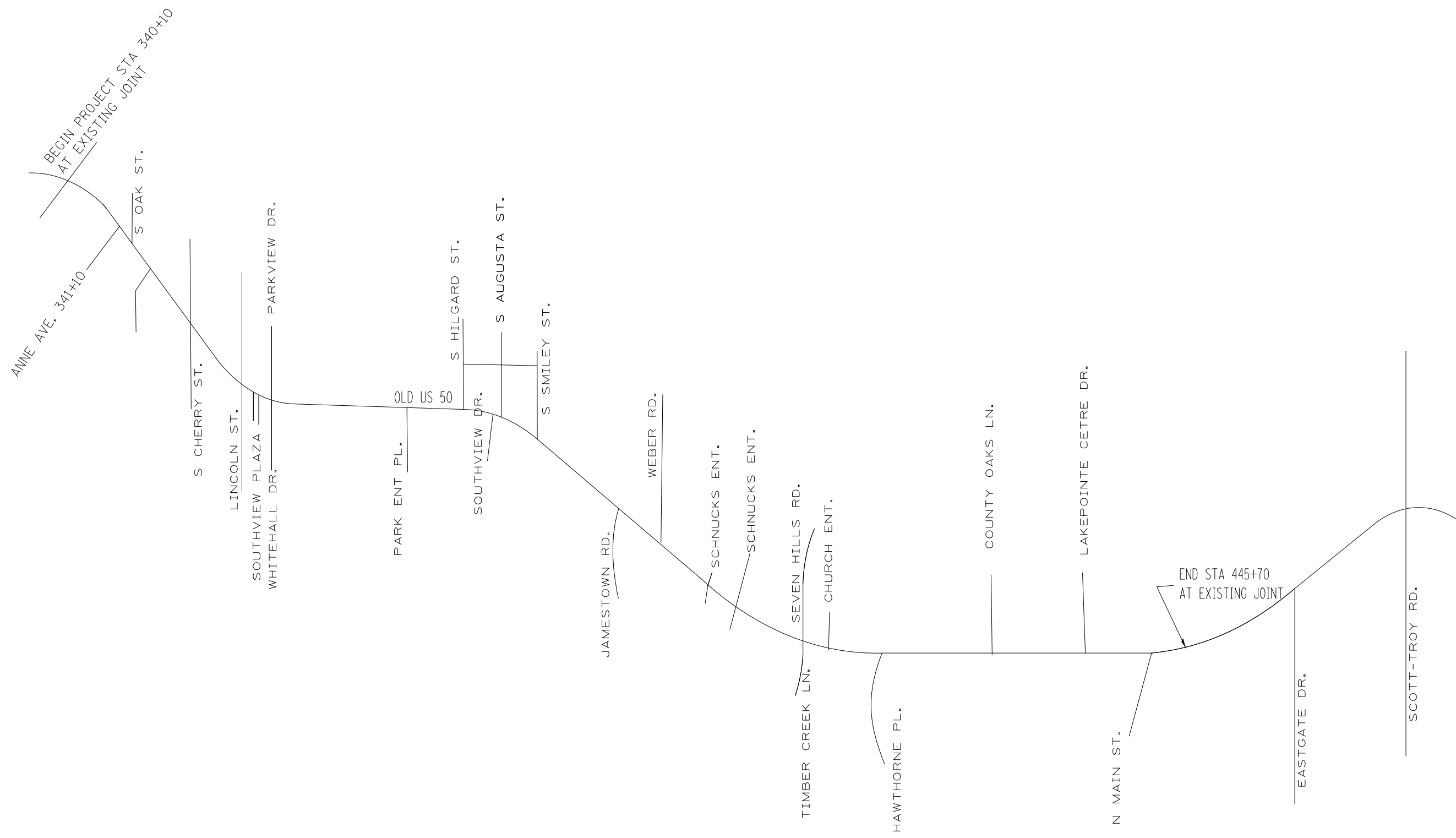
**STATE OF ILLINOIS
DEPARTMENT OF TRANSPORTATION**

SUMMARY OF QUANTITIES

SCALE: SHEET 4 OF 4 SHEETS STA. TO STA.

F.A.U RTE.	SECTION	COUNTY	TOTAL SHEETS	SHEET NO.
9166A	32.31RS-3	ST. CLAIR	26	12
CONTRACT NO. 76P55				
ILLINOIS FED. AID PROJECT				

MODEL: \\MODELS\MN\FE
 FILE NAME: p:\i1102\cpx_bendby.com\FW\DOT\Documents\DOT Office\District 8\Projects\0876P55\CADD\DATA\CAD\sheet\0876P55-shc-bn.dgn



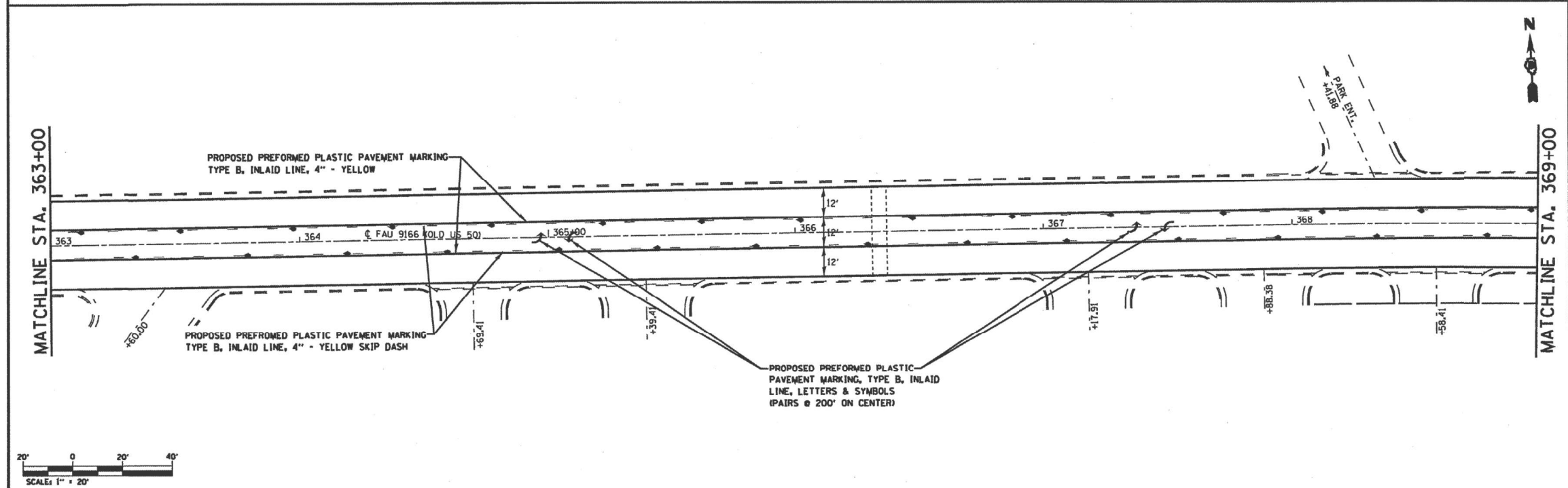
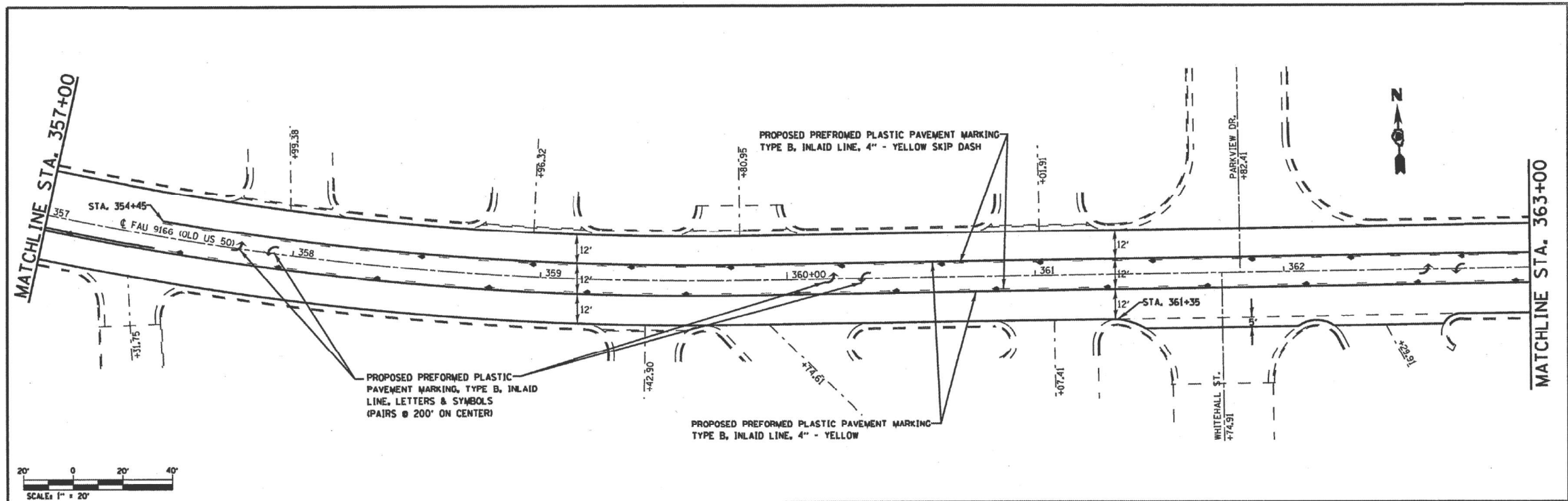
USER NAME = agbo@ato	DESIGNED -	REVISED -
	DRAWN -	REVISED -
PLOT SCALE = 100,0000' / in.	CHECKED -	REVISED -
PLOT DATE = 9/21/2021	DATE -	REVISED -

**STATE OF ILLINOIS
 DEPARTMENT OF TRANSPORTATION**

LOCATION MAP

SCALE: SHEET OF SHEETS STA. TO STA.

F.A.U RTE. 9166A	SECTION 32.31RS-3	COUNTY ST. CLAIR	TOTAL SHEETS 26	SHEET NO. 13
CONTRACT NO. 76P55			ILLINOIS FED. AID PROJECT	



FILE NAME =	USER NAME = alfordb	DESIGNED -	REVISED -	STATE OF ILLINOIS DEPARTMENT OF TRANSPORTATION	PAVEMENT MARKING / PLAN SHEET OLD US 50	F.A.U. SITE	SECTION	COUNTY	TOTAL SHEETS	SHEET NO.
alfordb\work\pav\oldus\ill174221\1077	alfordb	DRAWN -	REVISED -			9166A	32RS-3, 31RS-3, 1RS-1	ST. CLAIR	56	28
PLOT SCALE = 48,0000' / IN.		CHECKED -	REVISED -			SCALE: NONE SHEET NO. OF SHEETS		CONTRACT NO. 76069		
PLOT DATE = 3/2/2018		DATE -	REVISED -			FED. ROAD DIST. NO. ILLINOIS FED. AID PROJECT				

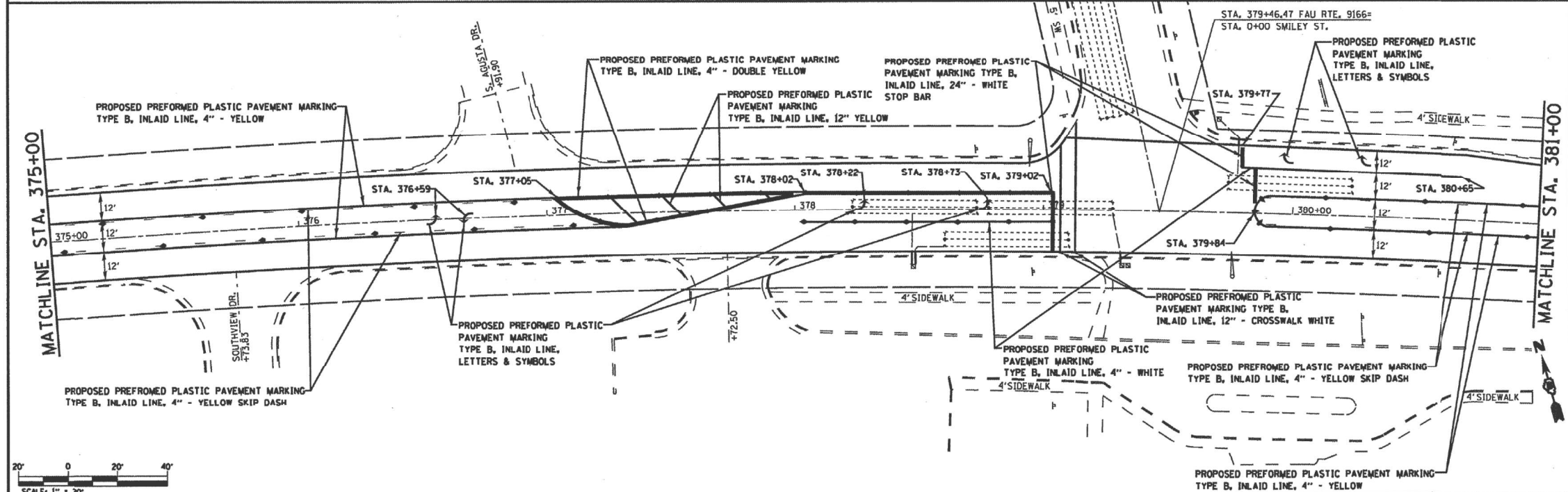
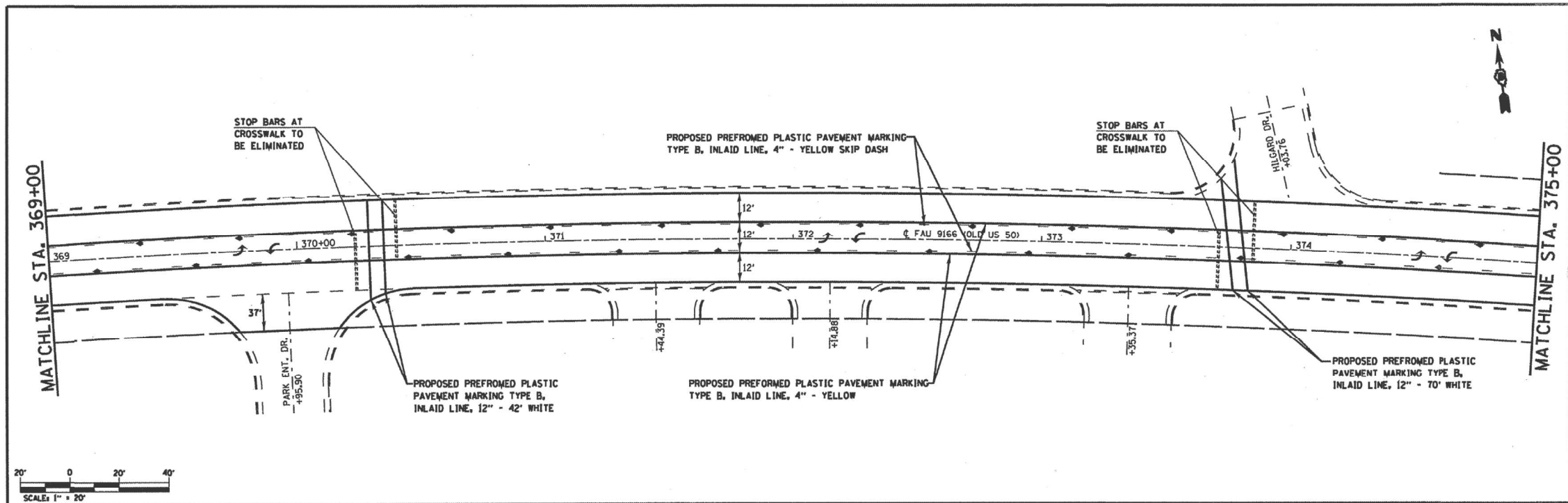
USER NAME = manntm	DESIGNED -	REVISED -
DRAWN -	REVISED -	
PLOT SCALE = 100,0000' / IN.	CHECKED -	REVISED -
PLOT DATE = 8/13/2021	DATE -	REVISED -

**STATE OF ILLINOIS
DEPARTMENT OF TRANSPORTATION**

PAVEMENT MARKING INFORMATION FYI ONLY			
SCALE: NONE	SHEET 2	OF 11 SHEETS	STA. TO STA.

F.A.U. RTE.	SECTION	COUNTY	TOTAL SHEETS	SHEET NO.
9166A	32,31RS-3	ST. CLAIR	26	15
CONTRACT NO. 76P55				
ILLINOIS FED. AID PROJECT				

MODEL: 1400E1.MXMTS
 FILE NAME: pav\ill174221\1077\1077.dwg
 PROJECT: 0876P55\CAD\DATA\CAD\PROJECTS\0876P55-sh-bba.dwg



FILE NAME =	USER NAME = alford	DESIGNED -	REVISED -	STATE OF ILLINOIS DEPARTMENT OF TRANSPORTATION	PAVEMENT MARKING / PLAN SHEET OLD US 50	F.A.U. RTE.	SECTION	COUNTY	TOTAL SHEETS	SHEET NO.		
cd:\pe\work\pav\pav\fa-ub\0174324\017669-01\plan.dgn		DRAWN -	REVISED -			SCALE: NONE	SHEET NO. OF SHEETS	9166A	32RS-3, 31RS-3, 1RS-1	ST. CLAIR	26	16
PLOT SCALE = 48,0000' / IN.		CHECKED -	REVISED -							CONTRACT NO. 76069		
PLOT DATE = 3/2/2018		DATE -	REVISED -							ILLINOIS FED. AID PROJECT		

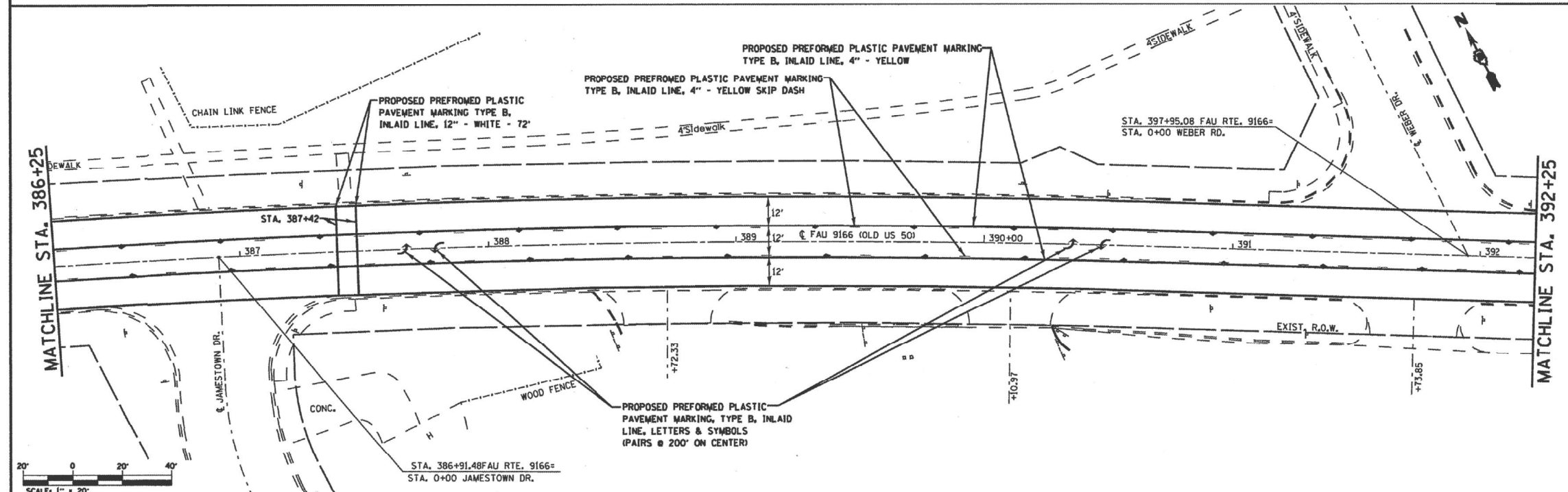
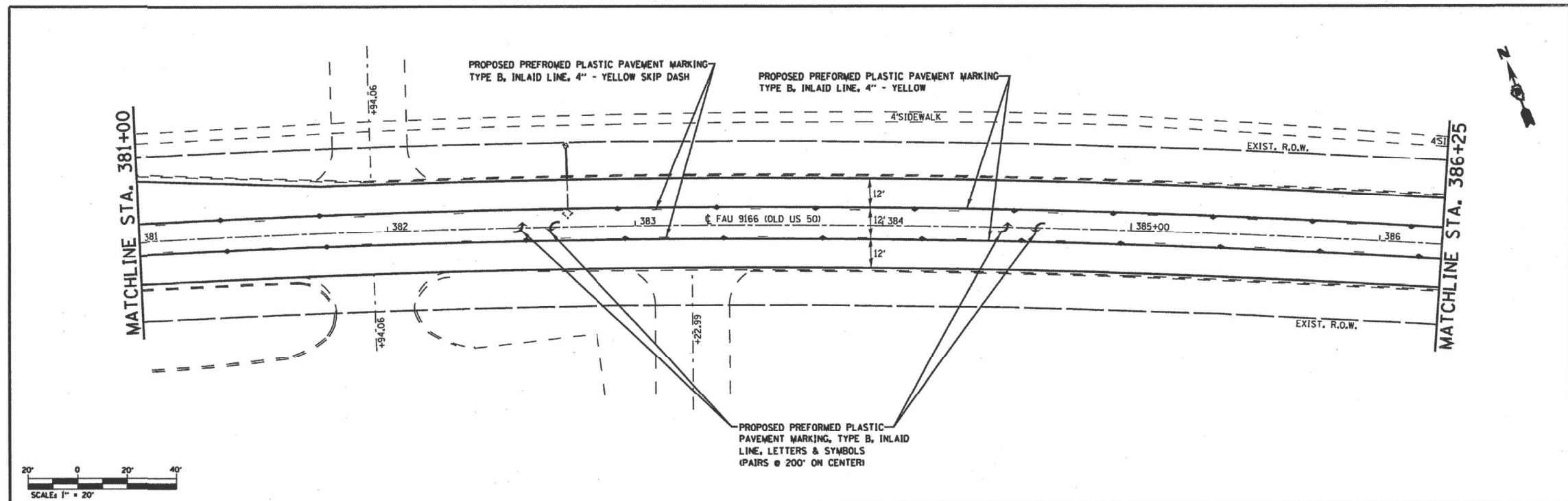
USER NAME = mantrm	DESIGNED -	REVISED -
	DRAWN -	REVISED -
PLOT SCALE = 100,0000' / IN.	CHECKED -	REVISED -
PLOT DATE = 8/13/2021	DATE -	REVISED -

STATE OF ILLINOIS
DEPARTMENT OF TRANSPORTATION

PAVEMENT MARKING INFORMATION			
FYI ONLY			
SCALE: NONE	SHEET 3	OF 11 SHEETS	STA. TO STA.

F.A.U. RTE.	SECTION	COUNTY	TOTAL SHEETS	SHEET NO.
9166A	32,31RS-3	ST. CLAIR	26	16
CONTRACT NO. 76P55				
ILLINOIS FED. AID PROJECT				

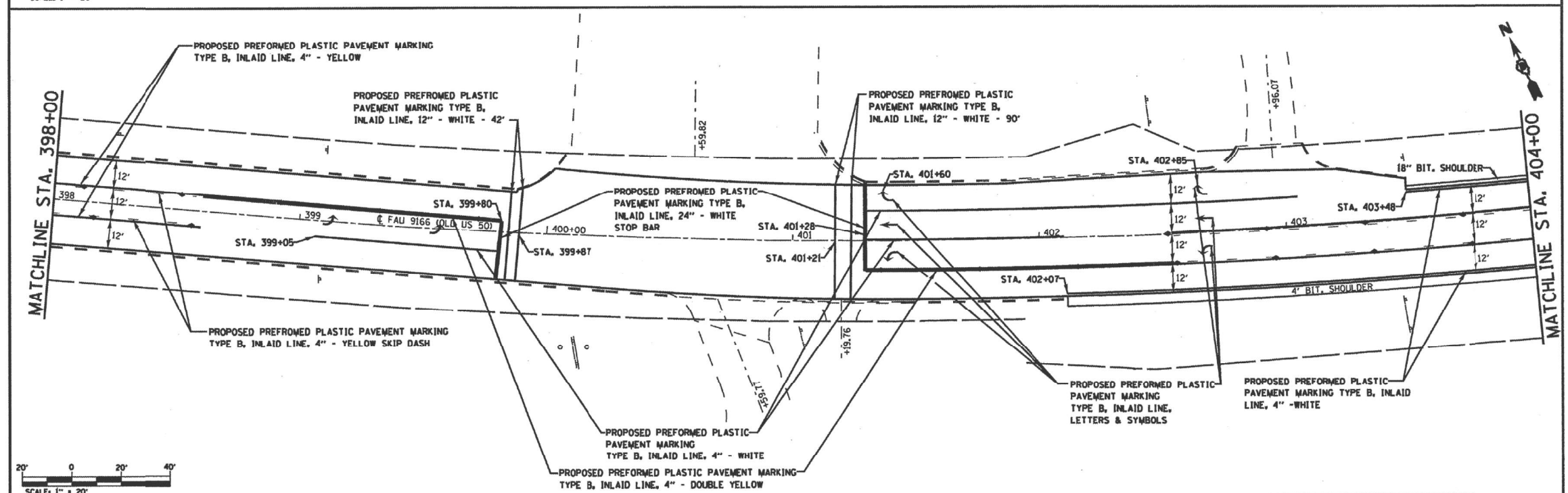
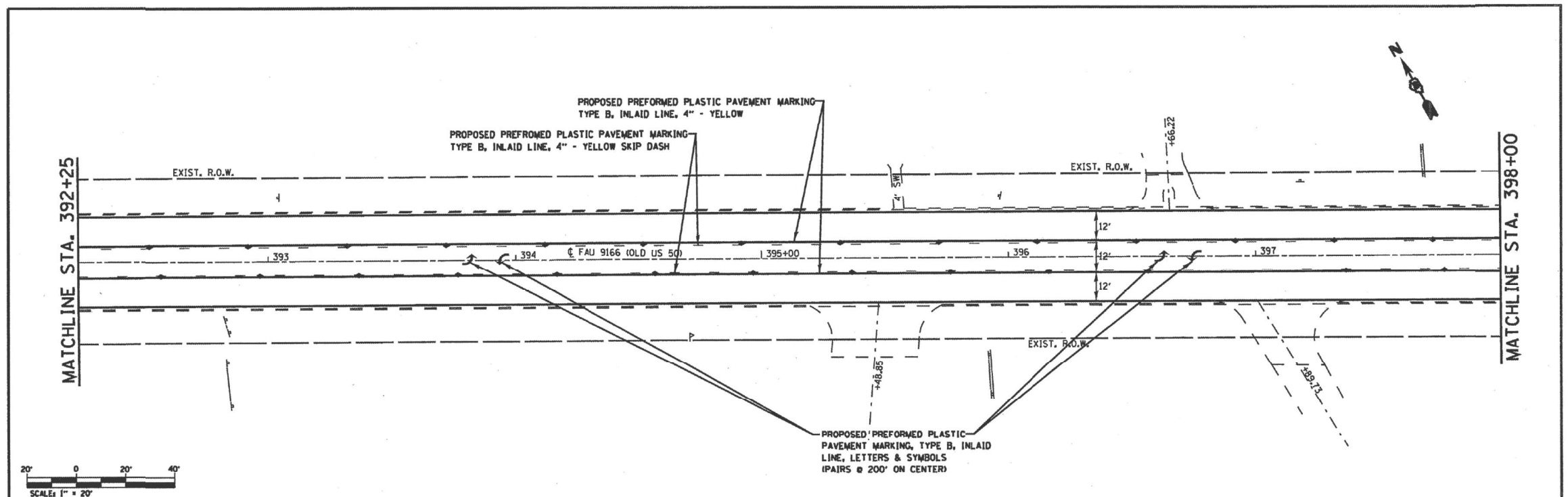
MODEL: 14001E1.MXD
 FILE NAME: p:\pub\pav\fa-ub\0174324\017669-01\plan.dgn
 PROJECT: 087655\CADD\DATA\CADD\087655-sh-ba.dgn



FILE NAME	USER NAME	DESIGNED	REVISED	STATE OF ILLINOIS DEPARTMENT OF TRANSPORTATION	PAVEMENT MARKING / PLAN SHEET OLD US 50	F.A.U. RTE.	SECTION	COUNTY	TOTAL SHEETS	SHEET NO.	
alpr_wrk\pav\oldus50\174224\0876	alforb	DRAWN	REVISED			9166A	32RS-3, 3IRS-3, IRS-1	ST. CLAIR	26	17	
		CHECKED	REVISED			CONTRACT NO. 76P55					
		DATE	REVISED			ILLINOIS FED. AID PROJECT					

FILE NAME	USER NAME	DESIGNED	REVISED	STATE OF ILLINOIS DEPARTMENT OF TRANSPORTATION	PAVEMENT MARKING INFORMATION FYI ONLY	F.A.U. RTE.	SECTION	COUNTY	TOTAL SHEETS	SHEET NO.	
alpr_wrk\pav\oldus50\174224\0876	alforb	DRAWN	REVISED			9166A	32RS-3, 3IRS-3, IRS-1	ST. CLAIR	26	17	
		CHECKED	REVISED			CONTRACT NO. 76P55					
		DATE	REVISED			ILLINOIS FED. AID PROJECT					

MODEL: I:\MODEL\MARIS
 FILE NAME: alpr_wrk\pav\oldus50\174224\0876\174224.dgn
 PROJECT: I:\PROJECTS\0876P55\CADD\DATA\CADD\PROJECTS\0876P55\sh-bba.dgn
 PLOT DATE: 8/13/2021



FILE NAME: \\snp\work\sp\dot\alford\14224\0876	USER NAME: alfords	DESIGNED: -	REVISED: -	STATE OF ILLINOIS DEPARTMENT OF TRANSPORTATION	PAVEMENT MARKING / PLAN SHEET OLD US 50	F.A.U. RTE.:	SECTION:	COUNTY:	TOTAL SHEETS:	SHEET NO.:	
	PLOT SCALE: 1/4" = 100' / IN.	CHECKED: -	REVISED: -			SCALE: NONE	SHEET NO. OF SHEETS:	32RS-3, 31RS-3, (RS-1)	ST. CLAIR	56	31
	PLOT DATE: 3/2/2010	DATE: -	REVISED: -					FED. ROAD DIST. NO.:	ILLINOIS FED. AID PROJECT:	CONTRACT NO. 76069	

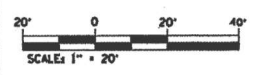
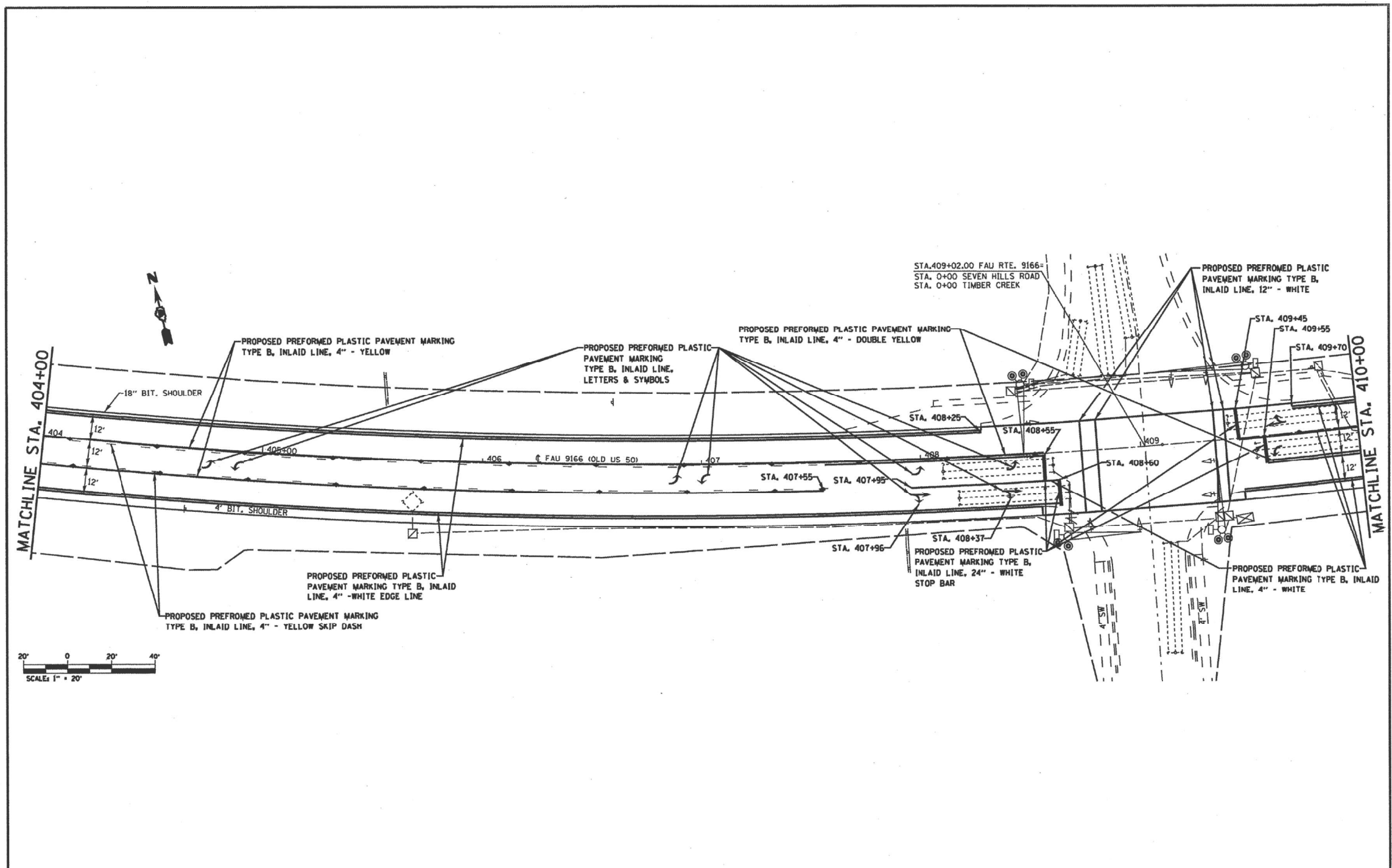
MODEL: \\MODEL\MARIS
 FILE NAME: \\snp\work\sp\dot\alford\14224\0876

USER NAME: mantm	DESIGNED: -	REVISED: -
	DRAWN: -	REVISED: -
PLOT SCALE: 1/4" = 100' / IN.	CHECKED: -	REVISED: -
PLOT DATE: 8/13/2021	DATE: -	REVISED: -

**STATE OF ILLINOIS
DEPARTMENT OF TRANSPORTATION**

PAVEMENT MARKING INFORMATION FYI ONLY			
SCALE: NONE	SHEET 5	OF 11 SHEETS	STA. TO STA.

F.A.U. RTE.:	SECTION:	COUNTY:	TOTAL SHEETS:	SHEET NO.:
9166A	32.31RS-3	ST. CLAIR	26	18
CONTRACT NO. 76069				
ILLINOIS FED. AID PROJECT				



FILE NAME =	USER NAME = alfordb	DESIGNED -	REVISED -	STATE OF ILLINOIS DEPARTMENT OF TRANSPORTATION	PAVEMENT MARKING / PLAN SHEET OLD US 50	F.A.U. RTE.	SECTION	COUNTY	TOTAL SHEETS	SHEET NO.	
alrpe_wrk\pavdot\alfordb\08174224\087655-shr-plan.rdg	09-shr-plan.rdg	DRAWN -	REVISED -			9166A	32RS-3, 3RS-3, IRS-1	ST. CLAIR	56	32	
PLOT SCALE = 48,0000' / IN.	CHECKED -	REVISED -	REVISED -			CONTRACT NO. 76069					
PLOT DATE = 3/2/2010	DATE -	REVISED -	REVISED -			FED. ROAD DIST. NO. ILLINOIS FED. AID PROJECT					

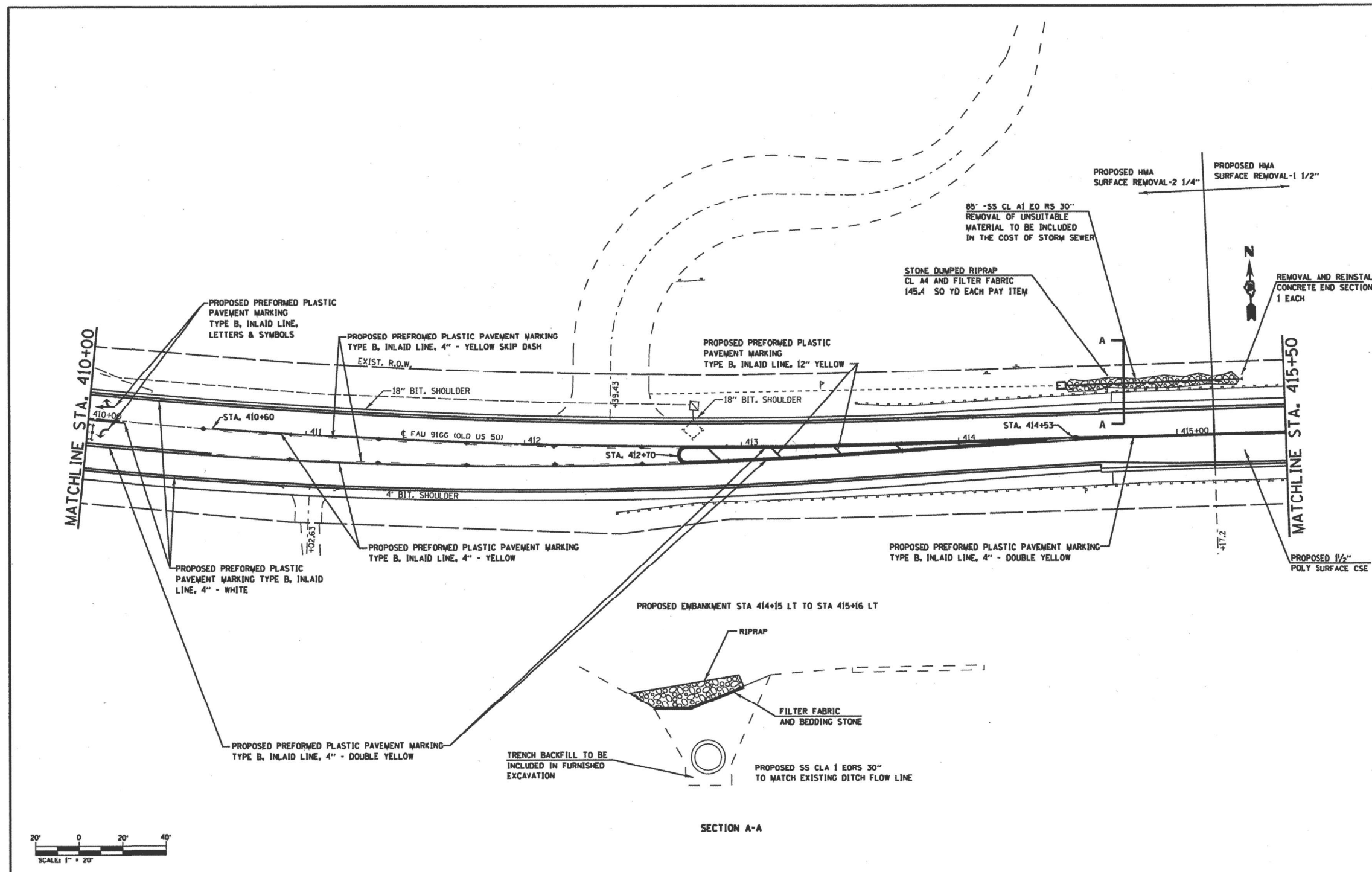
MODEL: I:\MODELS\MMF5
 FILE NAME: pav\pavdot\alfordb\08174224\087655-shr-plan.rdg
 PROJECT: D:\Projects\DOT\Office\District_8\Projects\087655\CADD\DATA\CADD\PROJECTS\087655-shr-ba.dgn

USER NAME = manntm	DESIGNED -	REVISED -
DRAWN -	REVISED -	REVISED -
PLOT SCALE = 100,0000' / IN.	CHECKED -	REVISED -
PLOT DATE = 8/13/2021	DATE -	REVISED -

**STATE OF ILLINOIS
DEPARTMENT OF TRANSPORTATION**

PAVEMENT MARKING INFORMATION FYI ONLY			
SCALE: NONE	SHEET 6	OF 11 SHEETS	STA. TO STA.

F.A.U. RTE.	SECTION	COUNTY	TOTAL SHEETS	SHEET NO.
9166A	32,31RS-3	ST. CLAIR	26	19
CONTRACT NO. 76P55				
<small>ILLINOIS FED. AID PROJECT</small>				



FILE NAME	USER NAME	DESIGNED	REVISED	STATE OF ILLINOIS DEPARTMENT OF TRANSPORTATION	PAVEMENT MARKING / PLAN SHEET OLD US 50	F.A.U. SITE	SECTION	COUNTY	TOTAL SHEETS	SHEET NO.	
en\pe_work\pedit\elford\48174224\48174224.dwg	elford	DRAWN	REVISED			SCALE: NONE	SHEET NO. OF SHEETS	32RS-3, 31RS-3, 1RS-1	ST. CLAIR	56	33
PLOT SCALE = 48,0000' / IN.	CHECKED	REVISED	DATE			CONTRACT NO. 76D69		ILLINOIS FED. AID PROJECT			
PLOT DATE = 3/2/2010	DATE	REVISED									

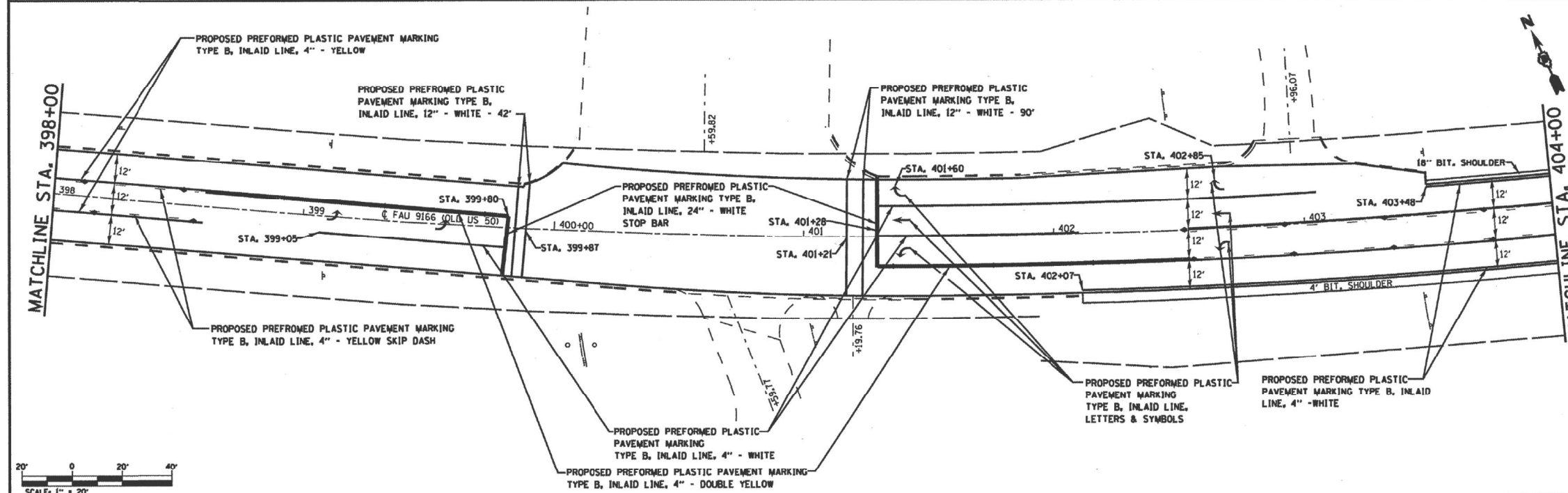
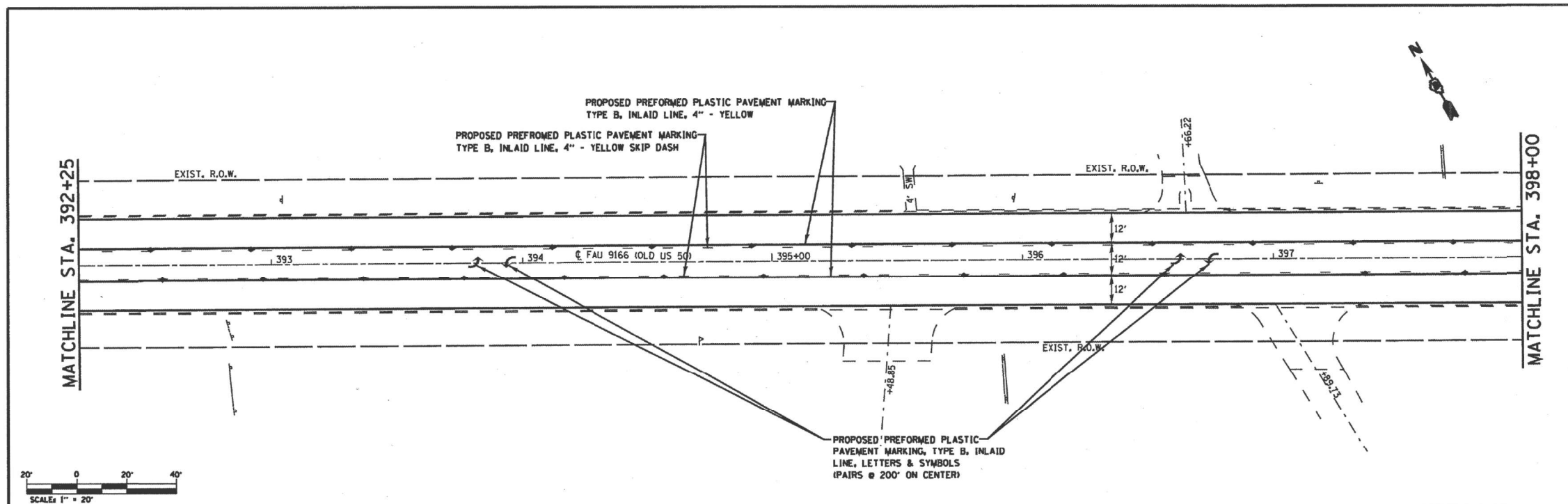
USER NAME = mantrn	DESIGNED -	REVISED -
	DRAWN -	REVISED -
PLOT SCALE = 100,0000' / IN.	CHECKED -	REVISED -
PLOT DATE = 8/13/2021	DATE -	REVISED -

**STATE OF ILLINOIS
DEPARTMENT OF TRANSPORTATION**

PAVEMENT MARKING INFORMATION FYI ONLY			
SCALE: NONE	SHEET 7	OF 11 SHEETS	STA. TO STA.

F.A.U. RTE.	SECTION	COUNTY	TOTAL SHEETS	SHEET NO.
9166A	32,31RS-3	ST. CLAIR	26	20
CONTRACT NO. 76P55				
ILLINOIS FED. AID PROJECT				

MODEL: 14001EN.MXD
 FILE NAME: p:\pub\caw\bea\fy.com\PI\DOT\Documents\DOT Office\District 8\Project\0876P55\CADD\DATA\CAD\checkst\0876P55-shc-ba.dwg



FILE NAME =	USER NAME = a1f0db	DESIGNED -	REVISED -	STATE OF ILLINOIS DEPARTMENT OF TRANSPORTATION	PAVEMENT MARKING / PLAN SHEET OLD US 50	F.A.U. RTE.	SECTION	COUNTY	TOTAL SHEET NO.	
crp\work\pav\dot\alford\8174224\0876	51-shr\plan\dn	DRAWN -	REVISED -			9166A	32RS-3, JRS-3, IRS-1	ST. CLAIR	56	31
PLOT SCALE = 48,0000' / IN.	CHECKED -	REVISED -	REVISED -			CONTRACT NO. 76069				
PLOT DATE = 3/2/2019	DATE -	REVISED -	REVISED -			ILLINOIS FED. AID PROJECT				

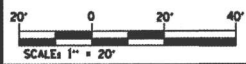
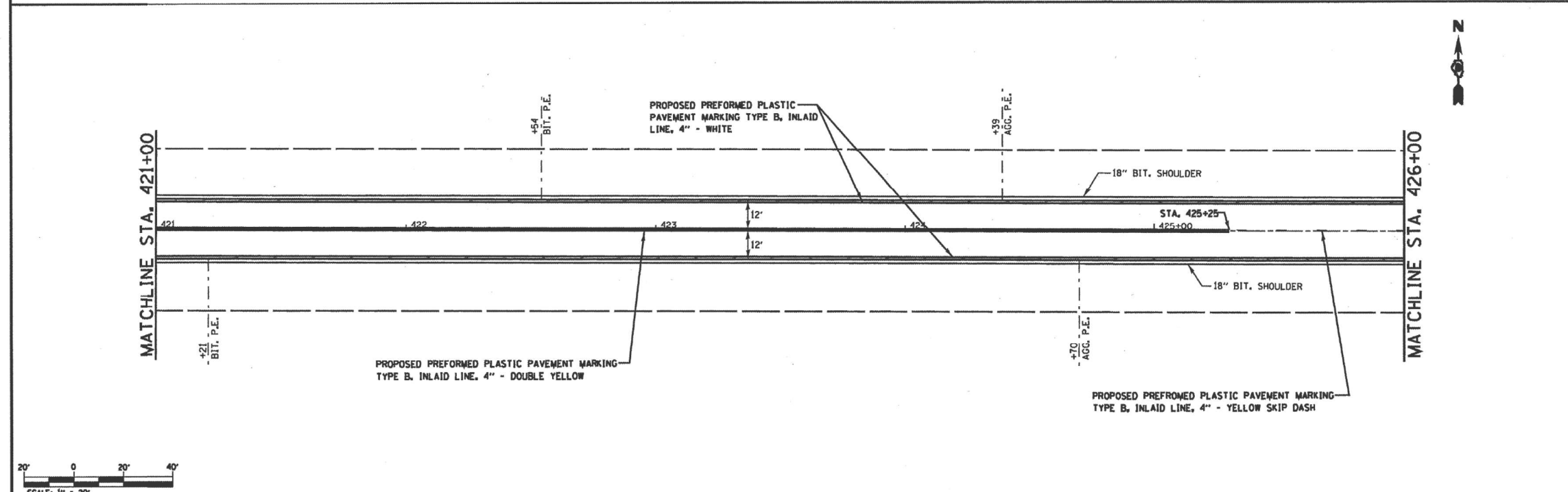
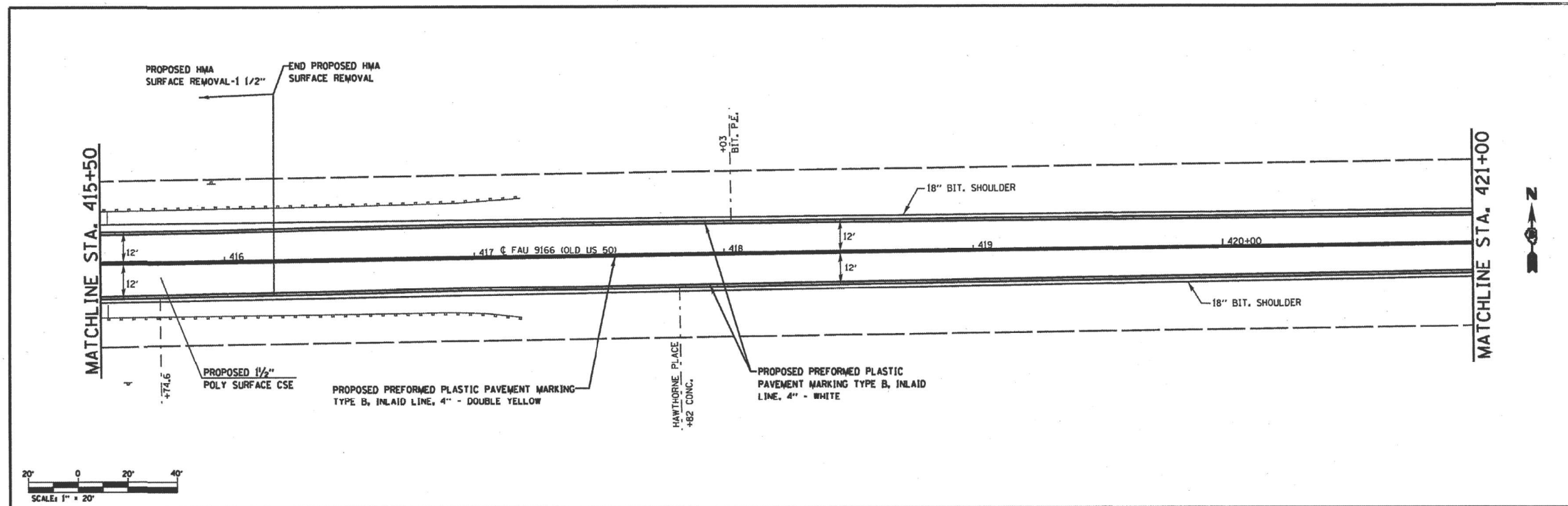
USER NAME = mantrm	DESIGNED -	REVISED -
	DRAWN -	REVISED -
PLOT SCALE = 100,0000' / IN.	CHECKED -	REVISED -
PLOT DATE = 8/13/2021	DATE -	REVISED -

**STATE OF ILLINOIS
DEPARTMENT OF TRANSPORTATION**

PAVEMENT MARKING INFORMATION FYI ONLY			
SCALE: NONE	SHEET 8	OF 11 SHEETS	STA. TO STA.

F.A.U. RTE.	SECTION	COUNTY	TOTAL SHEETS	SHEET NO.
9166A	32.3IRS-3	ST. CLAIR	26	21
CONTRACT NO. 76P55				
ILLINOIS FED. AID PROJECT				

MODEL: 14001ENRMS
 FILE NAME: pav\dot\alford\8174224\0876\51-shr\plan\dn.dgn
 PROJECT: D:\dot\alford\8174224\0876\51-shr\plan\dn.dgn
 PROJECT: D:\dot\alford\8174224\0876\51-shr\plan\dn.dgn



FILE NAME c:\p\work\pav\dot\illfor\dot\ill74224\dot\ill7669\plan.dgn	USER NAME = alforob	DESIGNED -	REVISED -	STATE OF ILLINOIS DEPARTMENT OF TRANSPORTATION	PAVEMENT MARKING / PLAN SHEET OLD US 50		F.A.U. RTE. 32RS-3, 3IRS-3, IRS-1	SECTION	COUNTY	TOTAL SHEETS	SHEET NO.
PLOT SCALE = 40,0000 ' / IN.	CHECKED -	REVISED -	SCALE: NONE				SHEET NO. OF SHEETS	FED. ROAD DIST. NO.	ILLINOIS FED. AID PROJECT	ST. CLAIR	56
PLOT DATE = 3/2/2019	DATE -	REVISED -						CONTRACT NO. 76069			

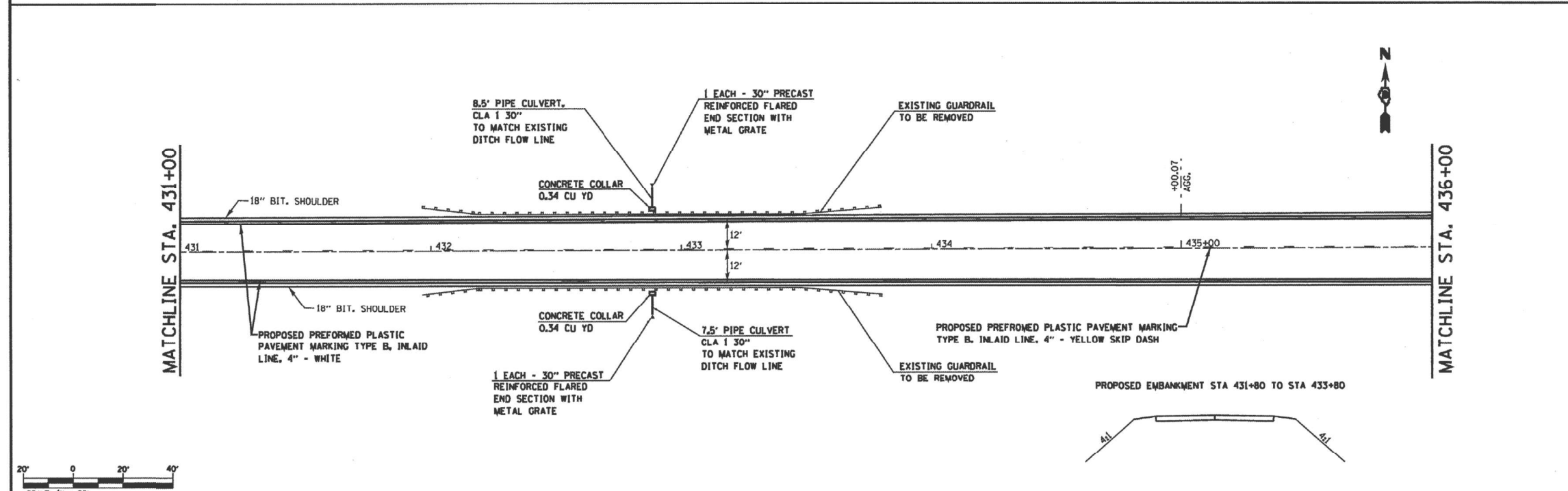
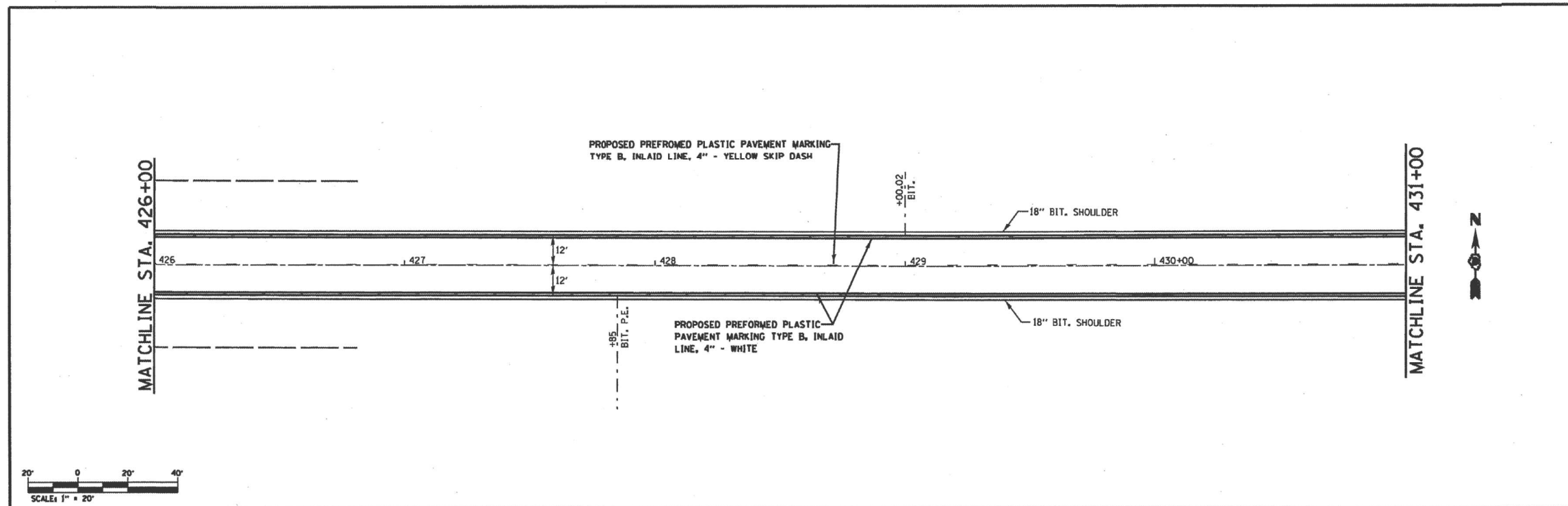
MODEL: I:\MODELS\MKMS
 FILE NAME: pav\illfor\dot\ill74224\dot\ill7669\plan.dgn

USER NAME = mantrm	DESIGNED -	REVISED -
	DRAWN -	REVISED -
PLOT SCALE = 100,0000 ' / IN.	CHECKED -	REVISED -
PLOT DATE = 8/13/2021	DATE -	REVISED -

**STATE OF ILLINOIS
DEPARTMENT OF TRANSPORTATION**

PAVEMENT MARKING INFORMATION FYI ONLY			
SCALE: NONE	SHEET 9 OF 11 SHEETS	STA.	TO STA.

F.A.U. RTE. 9166A	SECTION 32,3IRS-3	COUNTY ST. CLAIR	TOTAL SHEETS 26	SHEET NO. 21A
CONTRACT NO. 76P55				
ILLINOIS FED. AID PROJECT				



FILE NAME =	USER NAME = ellford	DESIGNED -	REVISED -	STATE OF ILLINOIS DEPARTMENT OF TRANSPORTATION	PAVEMENT MARKING / PLAN SHEET OLD US 50	F.A.U. RTE.	SECTION	COUNTY	TOTAL SHEETS	SHEET NO.
DRN/STN	32RS-3, JRS-3, IRS-1	ST. CLAIR	56			35				
CONTRACT NO.	76069									
FED. ROAD DIST. NO.	ILLINOIS FED. AID PROJECT									
PLT SCALE = 48,0000' / IN.	CHECKED -	REVISED -	SCALE: NONE	SHEET NO. OF SHEETS						
PLT DATE = 3/2/2018	DATE -	REVISED -								

MODEL: \\MODEL\NAME
 FILE NAME: \\PUB\caw\bea\p\com\PI\DOT\Documents\DOT Office\District 8\Project\087655\CADD\DATA\CAD\check\087655-shc-ba.dgn

USER NAME = mantrn	DESIGNED -	REVISED -
	DRAWN -	REVISED -
PLT SCALE = 100,0000' / in.	CHECKED -	REVISED -
PLT DATE = 8/13/2021	DATE -	REVISED -

STATE OF ILLINOIS
DEPARTMENT OF TRANSPORTATION

PAVEMENT MARKING INFORMATION
FYI ONLY

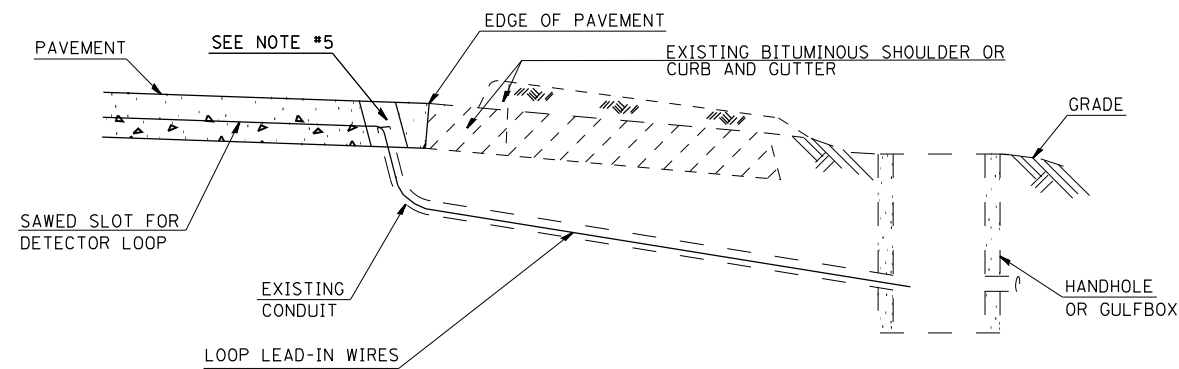
SCALE: NONE SHEET 10 OF 11 SHEETS STA. TO STA.

F.A.U. RTE.	SECTION	COUNTY	TOTAL SHEETS	SHEET NO.
9166A	32,31RS-3	ST. CLAIR	26	21B
CONTRACT NO. 76P55				
ILLINOIS FED. AID PROJECT				

NOTES:

SEE TABLE "DETECTOR LOOP REQUIREMENTS AND CALCULATIONS"
FOR LOOP SIZE AND CALCULATED NUMBER OF TURNS.
SEE "DETAIL A" FOR INSTALLING DETECTOR LOOP WIRES
IN EXISTING CONDUITS.

SCHEDULE OF QUANTITIES			TOTAL QUANTITIES	US 50 & LINCOLN AVE.	US 50 & SMILEY ST.	US 50 & SCHNUNK'S ENTRANCE	US 50 & TIMBER CK. / 7 HILLS
CODE NO	ITEM	UNIT					
8860000	DETECTOR LOOP REPLACEMENT	FOOT	3396	883	815	947	751



DETAIL A
(NO SCALE)

INSTALLING DETECTOR LOOP WIRES IN EXISTING CONDUIT

1. DRILL OUT PAVEMENT SEALANT AND CLEAN EXISTING CONDUIT.
2. REMOVE EXISTING DETECTOR LOOP WIRES TO HANDHOLE OR GULFBOX.
3. INSTALL NEW LOOP LEAD-IN WIRES IN EXISTING CONDUIT.
4. SPLICE NEW DETECTOR LOOP WIRES TO EXISTING LOOP LEAD-IN CABLE IN HANDHOLE OR GULFBOX.
5. FILL HOLE WITH APPROVED SEALER. PREVENT SEALER FROM ENTERING INTO CONDUIT.
6. LOCATING UNDERGROUND CABLE WILL BE PAID FOR SEPARATELY.

NOT A PAY ITEM. THE COST OF THIS WORK SHALL BE INCLUDED IN THE PAY ITEM "DETECTOR LOOP REPLACEMENT"

DETECTOR LOOP REPLACEMENT LEGEND

- EX. HANDHOLE
- EX. DETECTOR LOOP
- EX. TRAFFIC SIGNAL CONTROLLER
- EXISTING CONDUIT
- PROPOSED DETECTOR LOOP

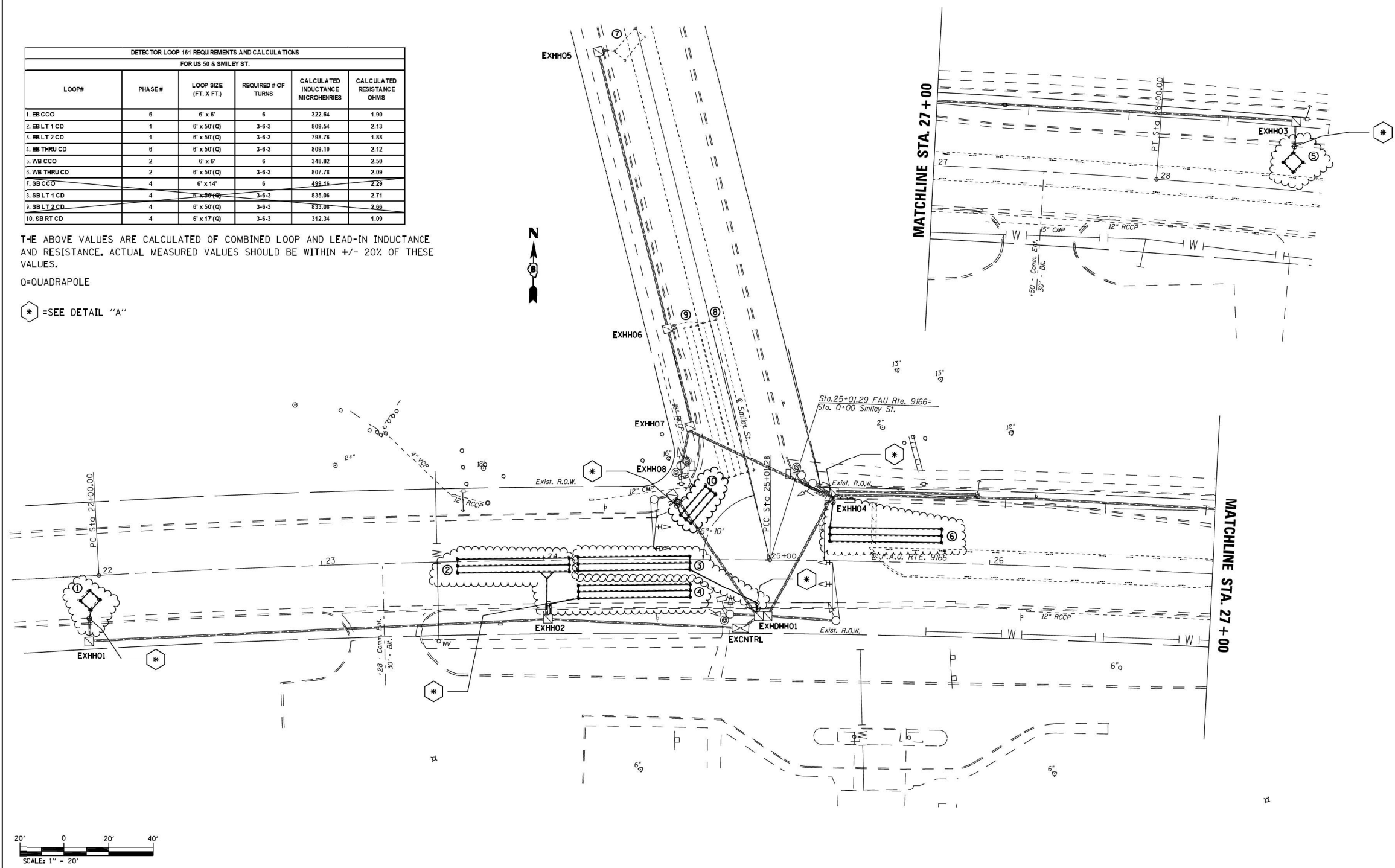
FOR INFORMATION ONLY

DETECTOR LOOP 161 REQUIREMENTS AND CALCULATIONS					
FOR US 50 & SMILEY ST.					
LOOP#	PHASE#	LOOP SIZE (FT. X FT.)	REQUIRED # OF TURNS	CALCULATED INDUCTANCE MICROHENRIES	CALCULATED RESISTANCE OHMS
1. EB CCO	6	6' x 6'	6	322.64	1.90
2. EBLT 1 CD	1	8' x 50'(Q)	3-6-3	809.54	2.13
3. EBLT 2 CD	1	8' x 50'(Q)	3-6-3	798.76	1.88
4. EB THRU CD	6	8' x 50'(Q)	3-6-3	809.10	2.12
5. WB CCO	2	6' x 6'	6	348.82	2.50
6. WB THRU CD	2	8' x 50'(Q)	3-6-3	807.78	2.09
7. SB CCO	4	6' x 14'	6	495.16	2.25
8. SBLT 1 CD	4	8' x 50'(Q)	3-6-3	835.06	2.71
9. SBLT 2 CD	4	8' x 50'(Q)	3-6-3	833.08	2.66
10. SBRT CD	4	8' x 17'(Q)	3-6-3	312.34	1.09

THE ABOVE VALUES ARE CALCULATED OF COMBINED LOOP AND LEAD-IN INDUCTANCE AND RESISTANCE. ACTUAL MEASURED VALUES SHOULD BE WITHIN +/- 20% OF THESE VALUES.

Q=QUADRAPOLE

* =SEE DETAIL "A"



FILE NAME =	USER NAME = prestonm	DESIGNED -	REVISED -
pw\id\dot\p\ben\ten\com\FWIDOT\Documents\DOT Office\District 8\Projects\0876P55\CADD\Drawn\CAD\Drawn\0876P55-TS.dgn	PROJECT OFFICE = District 8\Projects\0876P55	DRAWN = Electrical\0876P55-TS.dgn	REVISED -
PLOT SCALE = 48.0000' / in.	CHECKED -	REVISED -	REVISED -
PLOT DATE = 8/25/2021	DATE -	REVISED -	REVISED -

STATE OF ILLINOIS
DEPARTMENT OF TRANSPORTATION

DETECTOR LOOP REPLACEMENT PLAN
US 50 AT SMILEY STREET

F.A.U. RTE. 9166A	SECTION 32, 3IRS-3	COUNTY ST. CLAIR	TOTAL SHEETS **	SHEET NO. **
SCALE: 1" = 20'		SHEET NO. OF SHEETS		FED. ROAD DIST. NO. ILLINOIS FED. AID PROJECT

MODEL: I:\MODELS\MAME FILE NAME: pw\id\dot\p\ben\ten\com\FWIDOT\Documents\DOT Office\District 8\Projects\0876P55\CADD\Drawn\CAD\Drawn\0876P55-TS.dgn

USER NAME = agbo\ato	DESIGNED -	REVISED -
	DRAWN -	REVISED -
PLOT SCALE = 100.0000' / in.	CHECKED -	REVISED -
PLOT DATE = 9/21/2021	DATE -	REVISED -

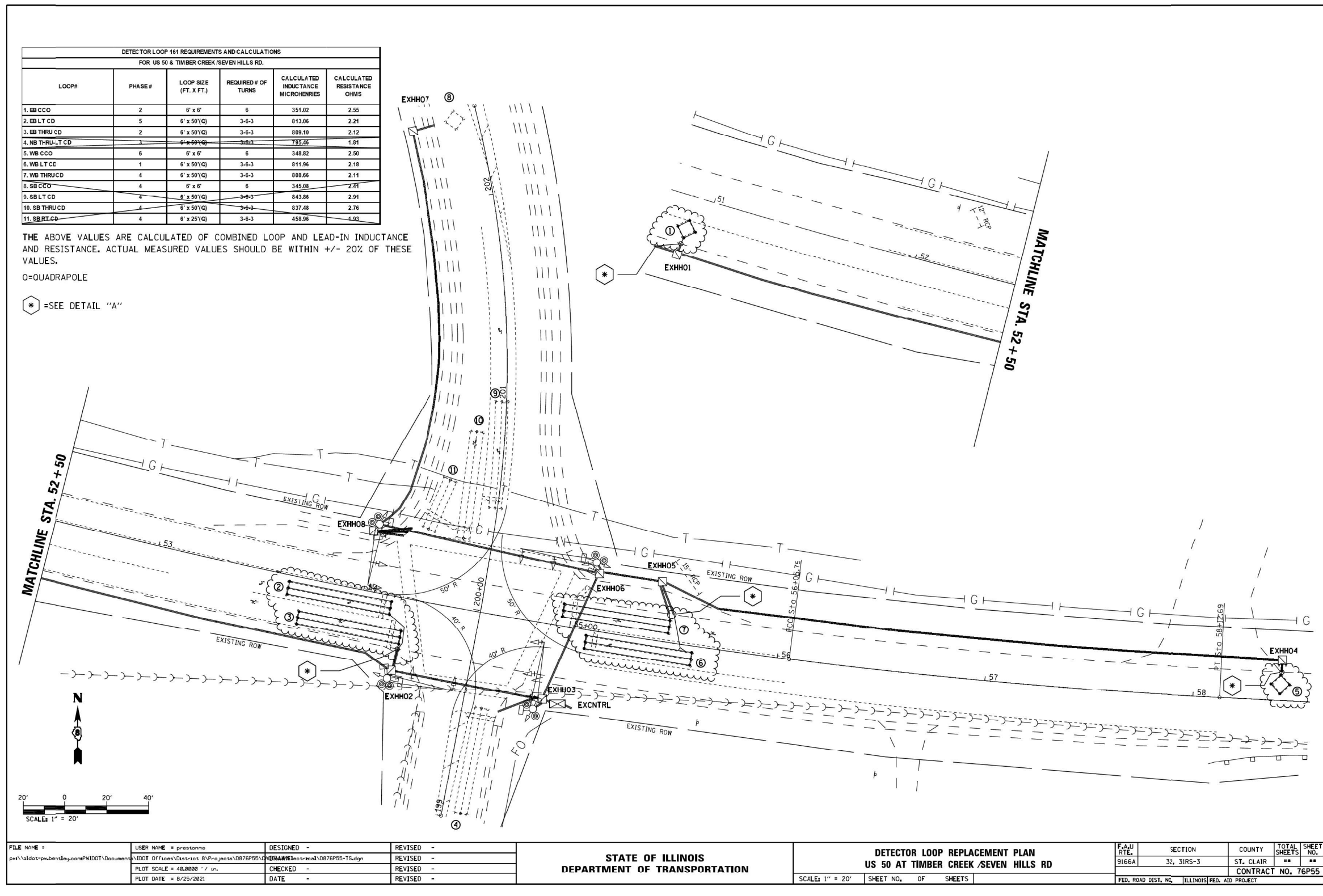
STATE OF ILLINOIS
DEPARTMENT OF TRANSPORTATION

DETECTOR LOOP REPLACEMENT
GENERAL NOTES, SCHEDULE OF QUANTITIES
DETAIL AND LEGEND

SCALE: SHEET 3 OF 5 SHEETS STA. TO STA.

F.A.U. RTE. 9166A	SECTION 32,3IRS-3	COUNTY ST. CLAIR	TOTAL SHEETS 26	SHEET NO. 24
SCALE: 1" = 20'		SHEET NO. OF SHEETS		FED. ROAD DIST. NO. ILLINOIS FED. AID PROJECT

FOR INFORMATION ONLY



MODEL: \\MODEL\NAME
 FILE NAME: \\PUB\BENTLEY\com\FWIDOT\Documents\DOT Office\District 8\Projects\0876P55\CADD\Drawn\CAD\check\0876P55-sh-ct-4.dgn

FILE NAME *	USER NAME * prestonne	DESIGNED -	REVISED -	STATE OF ILLINOIS DEPARTMENT OF TRANSPORTATION	DETECTOR LOOP REPLACEMENT PLAN US 50 AT TIMBER CREEK /SEVEN HILLS RD	F.A.U. RTE.	SECTION	COUNTY	TOTAL SHEETS	SHEET NO.
\\PUB\BENTLEY\com\FWIDOT\Documents\DOT Office\District 8\Projects\0876P55\CADD\Drawn\CAD\check\0876P55-sh-ct-4.dgn	\\DOT Office\District 8\Projects\0876P55\CADD\Drawn\CAD\check\0876P55-TS.dgn	DRAWN -	REVISED -			9166A	32, 31RS-3	ST. CLAIR	**	**
PLOT SCALE = 48,0000' / in.	CHECKED -	REVISED -	REVISED -			CONTRACT NO. 76P55				
PLOT DATE = 8/25/2021	DATE -	REVISED -	REVISED -			FED. ROAD DIST. NO. ILLINOIS FED. AID PROJECT				

USER NAME = agbo@ato	DESIGNED -	REVISED -	STATE OF ILLINOIS DEPARTMENT OF TRANSPORTATION	DETECTOR LOOP REPLACEMENT GENERAL NOTES, SCHEDULE OF QUANTITIES DETAIL AND LEGEND	F.A.U. RTE.	SECTION	COUNTY	TOTAL SHEETS	SHEET NO.
PLOT SCALE = 100,0000' / in.	CHECKED -	REVISED -			9166A	32,31RS-3	ST. CLAIR	26	26
PLOT DATE = 9/21/2021	DATE -	REVISED -			CONTRACT NO. 76P55				
					ILLINOIS FED. AID PROJECT				