

INDEX OF SHEETS

1	COVER
2	INDEX OF SHEETS, HIGHWAY STANDARDS AND COMMITMENTS
3	GENERAL NOTES
4 - 12	SUMMARY OF QUANTITIES
13	EARTHWORK SCHEDULE
14 - 18	TYPICAL SECTIONS AND HOT-MIX ASPHALT REQUIREMENTS
19 - 20	ALIGNMENT, CONTROL POINTS AND BENCHMARKS
21 - 28	PLAN AND PROFILE
29	MAINTENANCE OF TRAFFIC NOTES
30	SUGGESTED MAINTENANCE OF TRAFFIC - DETOUR - IL 176
31	SUGGESTED MAINTENANCE OF TRAFFIC - DETOUR - MAIN STREET
32	MAINTENANCE OF TRAFFIC- TYPICALS
33 - 35	MAINTENANCE OF TRAFFIC-IL ROUTE 176
36 - 37	MAINTENANCE OF TRAFFIC-MAIN STREET
38 - 40	EROSION CONTROL PLAN
41 - 47	DRAINAGE AND UTILITIES
48 - 52	WATER MAIN PLAN AND PROFILE
53 - 65	PLAT OF HIGHWAYS
66 - 67	PAVEMENT MARKING AND SIGNING PLAN
68	DISTRICT ONE MAST ARM MOUNTED STREET NAME SIGNS
69	DISTRICT ONE LIGHTED STREET NAME SIGN
70	UTILITY INFORMATION SHEET
71 - 77	DISTRICT ONE STANDARD TRAFFIC SIGNAL DESIGN DETAILS
78	TRAFFIC SIGNAL PLAN
79	CABLE PLAN, PHASE DESIGNATION DIAGRAM, AND EMERGENCY PREEMPTION SEQUENCE IL ROUTE 176 AND MAIN STREET
80	MAST ARM MOUNTED STREET NAME SIGNS AND SCHEDULE OF QUANTITIES IL ROUTE 176 AND MAIN STREET
81	CABLE PLAN, PHASE DESIGNATION DIAGRAM, AND EMERGENCY PREEMPTION SEQUENCE IL ROUTE 176 AND WALKUP AVE
82	TRAFFIC SIGNAL INTERCONNECT PLAN
83	TRAFFIC SIGNAL INTERCONNECT SCHEMATIC
84 - 91	ADA SIDEWALK RAMP DETAILS
92 - 93	MISCELLANEOUS DETAILS
94 - 95 A	WATER MAIN DETAILS
96	DRIVEWAY DETAILS - DISTANCE BETWEEN R.O.W. AND FACE OF CURB & EDGE OF SHOULDER > = 15' (4.5m) - (BD-01)
97	DETAIL OF STORM SEWER CONNECTION TO EXISTING SEWER - (BD-07)
98	DETAILS FOR FRAMES AND LIDS ADJUSTMENT WITH MILLING - (BD-08)
99	MANHOLE WITH RESTRICTOR PLATE (BD-12)
100	PAVEMENT PATCHING FOR HMA SURFACED PAVEMENT - (BD-22)
101	CURB OR CURB AND GUTTER REMOVAL AND REPLACEMENT - (BD-24)
102	BUTT JOINT AND HMA TAPER DETAILS - (BD-32)
103	FIRE HYDRANT TO BE MOVED - (BD-36)
104	TRAFFIC CONTROL AND PROTECTION FOR SIDE ROADS, INTERSECTIONS, AND DRIVEWAYS - (TC-10)
105	TYPICAL APPLICATIONS RAISED REFLECTIVE PAVEMENT MARKERS (SNOW-PLOW RESISTANT) - (TC-11)
106	DISTRICT ONE TYPICAL PAVEMENT MARKINGS - (TC-13)
106A	DISTRICT ONE DETAIL- TRAFFIC CONTROL AND PROTECTION AT TURN BAYS (TO REMAIN OPEN TO TRAFFIC) (TC-14)
107	SHORT TERM PAVEMENT MARKING LETTERS AND SYMBOLS - (TC-16)
108	DETOUR SIGNING FOR CLOSING STATE HIGHWAYS - (TC-21)
109	ARTERIAL ROAD INFORMATION SIGN - (TC-22)
110	DRIVEWAY ENTRANCE SIGNING - (TC-26)
111 - 115	CROSS SECTIONS- IL ROUTE 176
116 - 121	CROSS SECTIONS- MAIN STREET

DISTRICT ONE DETAILS

BD-01	DISTRICT ONE DETAIL - DRIVEWAYS DETAILS - DISTANCE BETWEEN ROW AND CURB OR EDGE GREATER THAN OR EQUAL TO 10' (4.5m) (BD-01)
BD-07	DISTRICT ONE DETAIL - DETAIL OF STORM SEWER CONNECTION TO EXISTING SEWER (BD-07)
BD-08	DISTRICT ONE DETAIL- FRAMES AND LIDS ADJUSTMENT WITH MILLING (BD-08)
BD-12	DISTRICT ONE DETAIL - MANHOLE WITH RESTRICTOR PLATE (BD-12)
BD-22	DISTRICT ONE DETAIL- PAVEMENT PATCHING FOR HMA SURFACED PAVEMENT (BD-22)
BD-24	DISTRICT ONE DETAIL- CURB OR CURB AND GUTTER REMOVAL AND REPLACEMENT (BD-24)
BD-32	DISTRICT ONE DETAIL - BUTT JOINT AND HMA TAPER (BD-32)
BD-36	DISTRICT ONE DETAIL - FIRE HYDRANT TO BE MOVED (BD-36)
TC-10	DISTRICT ONE DETAIL - TRAFFIC CONTROL AND PROTECTION FOR SIDE ROADS, INTERSECTIONS, AND DRIVEWAYS (TC-10)
TC-11	DISTRICT ONE DETAIL- TYPICAL APPLICATIONS RAISED REFLECTIVE PAVEMENT MARKERS (SNOW-PLOW RESISTANT) (TC-11)
TC-13	DISTRICT ONE DETAIL - TYPICAL PAVEMENT MARKINGS (TC-13)
TC-14	DISTRICT ONE DETAIL- TRAFFIC CONTROL AND PROTECTION AT TURN BAYS (TO REMAIN OPEN TO TRAFFIC)
TC-16	DISTRICT ONE DETAIL - PAVEMENT MARKING LETTERS AND SYMBOLS FOR TRAFFIC STAGING (TC-16)
TC-21	DISTRICT ONE DETAIL- DETOUR SIGNING FOR CLOSING STATE HIGHWAY (TC-21)
TC-22	DISTRICT ONE DETAIL - ARTERIAL ROAD INFORMATION SIGN (TC-22)
TC-26	DISTRICT ONE DETAIL - DRIVEWAY ENTRANCE SIGNING (TC-26)
TS-02	DISTRICT ONE DETAIL - MAST ARM MOUNTED STREET NAME SIGNS (TS-02)
TS-05	DISTRICT ONE DETAIL- STANDARD TRAFFIC SIGNAL DESIGN DETAILS (7 SHEETS) (TS-05)

HIGHWAY STANDARDS

000001-08	STANDARD SYMBOLS, ABBREVIATIONS AND PATTERNS
280001-07	TEMPORARY EROSION CONTROL SYSTEMS
424001-11	PERPENDICULAR CURB RAMPS FOR SIDEWALKS
424011-04	CORNER PARALLEL CURB RAMPS FOR SIDEWALKS
424016-05	MID-BLOCK CURB RAMPS FOR SIDEWALKS
424031-02	MEDIAN PEDESTRIAN CROSSINGS
442201-03	CLASS C AND D PATCHES
601001-05	PIPE UNDERDRAINS
602001-02	CATCH BASIN TYPE A
602011-02	CATCH BASIN TYPE C
602301-04	INLET - TYPE A
602401-07	PRECAST MANHOLE TYPE A 4' (1.22m) DIAMETER
602402-03	PRECAST MANHOLE TYPE A 5' (1.52m) DIAMETER
602406-11	PRECAST MANHOLE TYPE A 6' (1.83 m) DIAMETER
602411-09	PRECAST MANHOLE TYPE A 7' (2.13 m) DIAMETER
602601-06	PRECAST REINFORCED CONCRETE FLAT SLAB TOP
602701-02	MANHOLE STEPS
604001-05	FRAME AND LIDS TYPE 1
604036-03	GRATE TYPE 8
604051-04	FRAME AND GRATE TYPE 11
604091-04	FRAME AND GRATE TYPE 24
606001-07	CONCRETE CURB TYPE B AND COMBINATION CONCRETE CURB AND GUTTER
606301-04	PC CONCRETE ISLANDS AND MEDIANS
701006-05	OFF-RD OPERATIONS, 2L, 2W, 15' (4.5 m) TO 24" (600 mm) FROM PAVEMENT EDGE
701011-04	OFF-RD MOVING OPERATIONS, 2L, 2W, DAY ONLY
701101-05	OFF-RD OPERATIONS, MULTILANE, 15' (4.5 m) TO 24" (600 mm) FROM PAVEMENT EDGE
701301-04	LANE CLOSURE, 2L, 2W, SHORT TIME OPERATIONS
701311-03	LANE CLOSURE 2L, 2W MOVING OPERATIONS - DAY ONLY
701427-05	LANE CLOSURE, MULTILANE, INTERMITTENT OR MOVING OPER., FOR SPEEDS ≤ 40 MPH
701501-06	URBAN LANE CLOSURE, 2L, 2W, UNDIVIDED
701502-09	URBAN LANE CLOSURE, 2L, 2W, WITH BIDIRECTIONAL LEFT TURN LANE
701602-10	URBAN LANE CLOSURE, MULTILANE, 2W WITH BIDIRECTIONAL LEFT TURN LANE
701701-10	URBAN LANE CLOSURE, MULTILANE INTERSECTION
701801-06	SIDEWALK, CORNER OR CROSSWALK CLOSURE
701901-08	TRAFFIC CONTROL DEVICES
720001-01	SIGN PANEL MOUNTING DETAILS
720006-04	SIGN PANEL ERECTION DETAILS
720016-04	MAST ARM MOUNTED STREET NAME SIGNS
728001-01	TELESCOPING STEEL SIGN SUPPORT
780001-05	TYPICAL PAVEMENT MARKINGS
781001-04	TYPICAL APPLICATIONS RAISED REFLECTIVE PAVEMENT MARKERS
814001-03	HANDHOLES
814006-03	DOUBLE HANDHOLES
821101-02	LUMINAIRE WIRING IN POLE
830026-01	TEMPORARY ROADWAY LIGHTING
836001-04	LIGHT POLE FOUNDATION
857001-01	STANDARD PHASE DESIGNATION DIAGRAMS AND PHASE SEQUENCES
862001-01	UNINTERRUPTIBLE POWER SUPPLY (UPS)
873001-02	TRAFFIC SIGNAL GROUNDING & BONDING
877001-08	STEEL MAST ARM ASSEMBLY AND POLE 16' THROUGH 55'
877006-06	STEEL MAST ARM ASSEMBLY AND POLE WITH DUAL MAST ARMS
878001-11	CONCRETE FOUNDATION DETAILS
880006-01	TRAFFIC SIGNAL MOUNTING DETAILS
886001-01	DETECTOR LOOP INSTALLATIONS
886006-01	TYPICAL LAYOUTS FOR DETECTION LOOPS

COMMITMENTS

THERE ARE NO COMMITMENTS FOR THIS PROJECT

STATE OF ILLINOIS - PROFESSIONAL DESIGN FIRM
 LICENSE NO. - 184-001121 - EXPIRES 4/30/2022
 morning 10/5/2021 9:12:48 AM
 MODEL: Default
 FILE NAME: I:\Crystal Lake\CRYL181171-North Main St PH (ICAD) Sheets\181171_ss2-sht-GenNotes.dgn

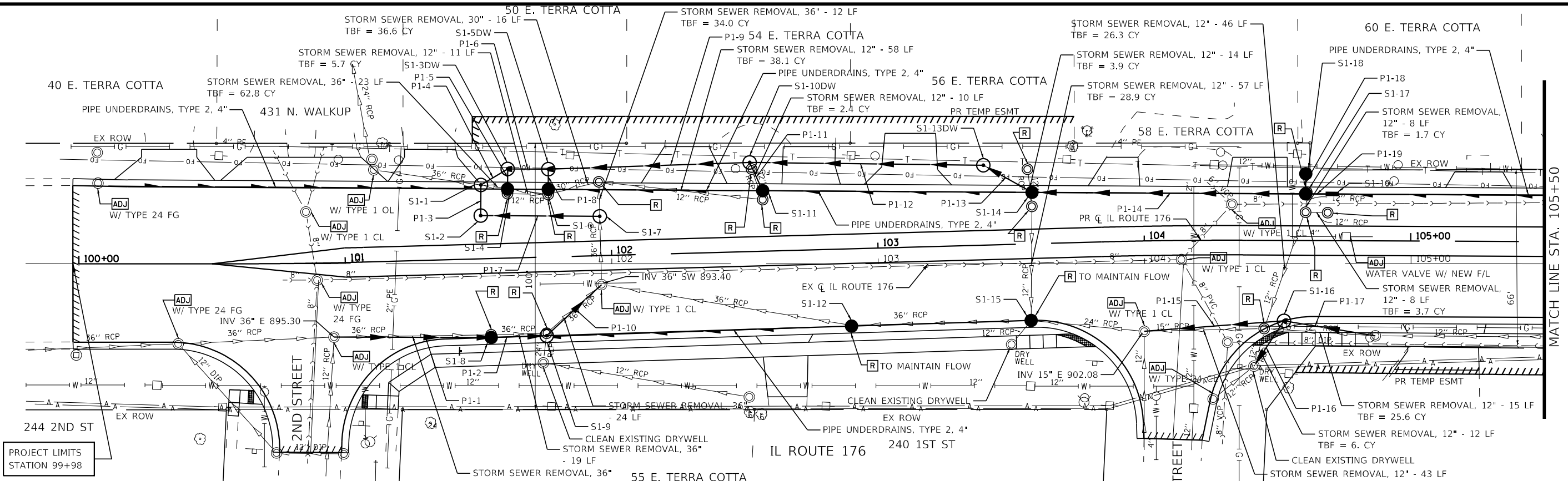
BAXTER & WOODMAN
 CONSULTING ENGINEERS

USER NAME	= moring	DESIGNED	= DJS	REVISED	= 10-05-2021
DRAWN	= KRB	CHECKED	= AKS	REVISED	= Addendum B 10/24/21
PLOT SCALE	= 2,000' = 1"	DATE	= 10-05-2021	FILE	= 181171_ss2-sht-GenNotes.dgn
PLOT DATE	= 10/5/2021				

STATE OF ILLINOIS
 DEPARTMENT OF TRANSPORTATION

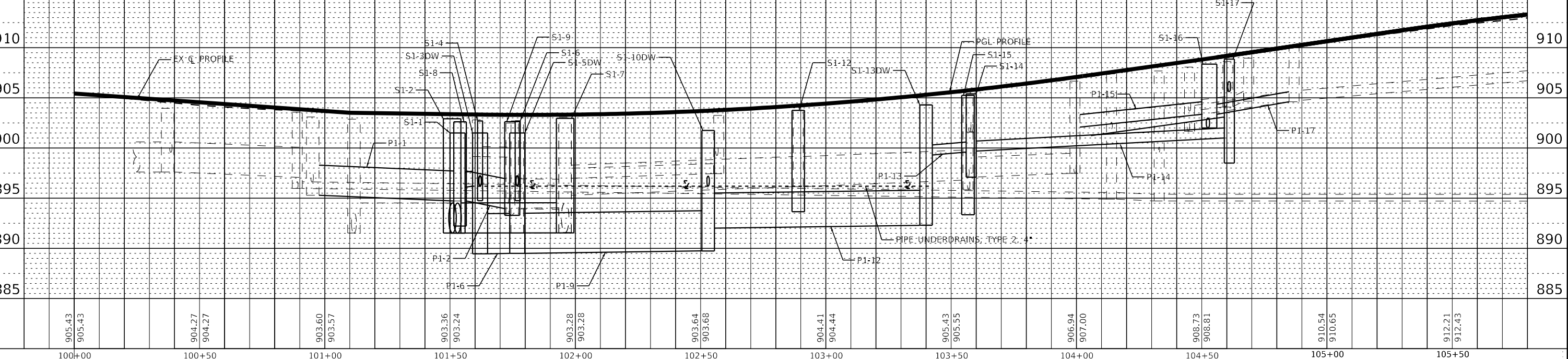
INDEX OF SHEETS, HIGHWAY STANDARDS, AND COMMITMENTS			
SCALE: NONE	SHEET	OF	SHEETS
	STA.		TO STA.

F.A.P. RTE.	SECTION	COUNTY	TOTAL SHEETS	SHEET NO.
335	15-00124-00-PV	McHENRY	121	2
				CONTRACT NO. 61H27
ILLINOIS FED. AID PROJECT				



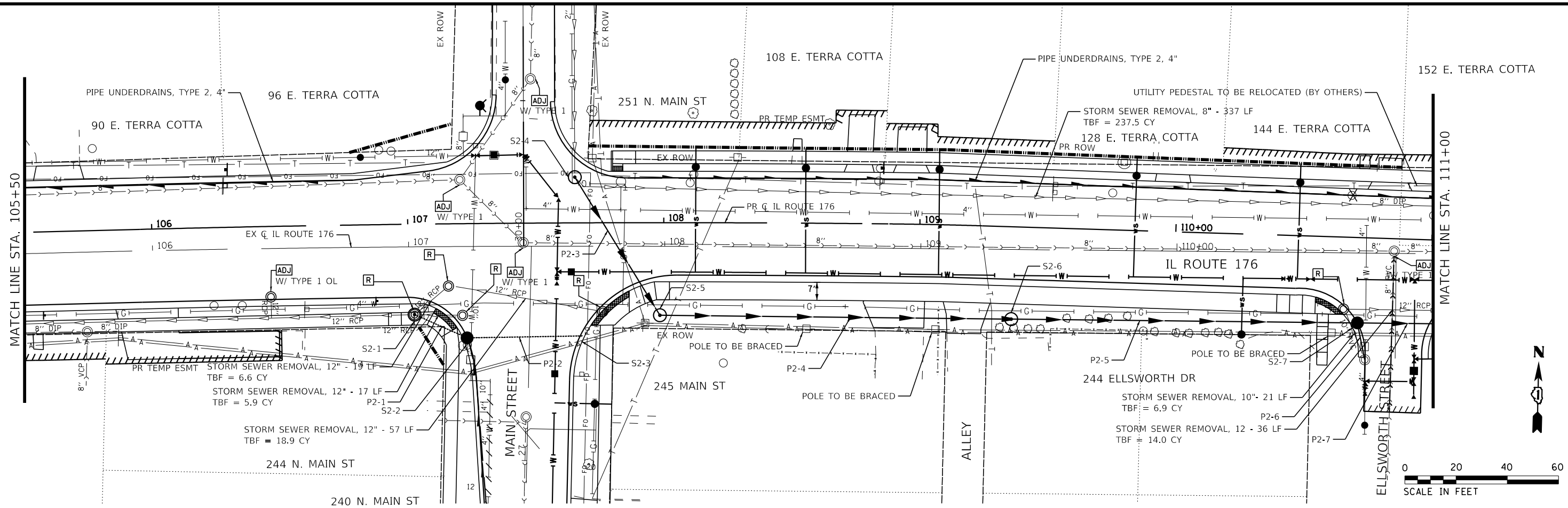
STRUCTURE NO.	STA	OFFSET FT	STRUCTURE TYPE	RIM/EOP	INVERTS
S1-1	101+83	27.7 LT	MANHOLES, TYPE A, 6-DIAMETER, TYPE 1 FRAME, CLOSED LID	901.50	891.52 EX 36" W 896.10 18" NE 891.52 36" S
S1-2	101+61	16.2 LT	MANHOLES, TYPE A, 7-DIAMETER, TYPE 1 FRAME, CLOSED LID	902.92	891.53 36" N 891.53 36" E
S1-3 DW	101+62	33.5 LT	MANHOLES, TYPE A, 6-DIAMETER, TYPE 1 FRAME, CLOSED LID, SPECIAL	901.60	896.20 18" SW 889.46 48" E 896.20 12" S
S1-4	101+82	25.9 LT	CATCH BASINS, TYPE C, TYPE 24 FRAME AND GRATE	902.70	896.25 12" N
S1-5 DW	101+77	33.0 LT	MANHOLES, TYPE A, 6-DIAMETER, TYPE 1 FRAME, CLOSED LID, SPECIAL	901.50	889.50 48" W 889.50 48" E 896.20 12" S
S1-6	101+77	24.6 LT	CATCH BASINS, TYPE C, TYPE 24 FRAME AND GRATE	902.70	896.25 12" N
S1-7	101+96	14.8 LT	MANHOLES, TYPE A, 7-DIAMETER, TYPE 1 FRAME, CLOSED LID	902.96	891.54 36" W 891.54 EX 36" S
S1-8	101+54	29.6 RT	CATCH BASINS, TYPE A, 6-DIAMETER, TYPE 24 FRAME AND GRATE	902.62	894.72 36" E 894.72 36" W
S1-9	101+75	29.5 RT	MANHOLES, TYPE A, 6-DIAMETER, TYPE 24 FRAME AND GRATE	902.63	893.94 36" NE 893.29 EX 24" S 893.94 36" W
S1-10 DW	102+53	33.5 LT	MANHOLES, TYPE A, 6-DIAMETER, TYPE 1 FRAME, CLOSED LID, SPECIAL	901.75	889.75 48" W 892.00 42" E 896.20 12" SE
S1-11	102+57	22.7 LT	CATCH BASINS, TYPE A, 4-DIAMETER, TYPE 24 FRAME AND GRATE	903.70	896.25 12" NW
S1-12	102+89	29.0 RT	CATCH BASINS, TYPE A, 5-DIAMETER, TYPE 24 FRAME AND GRATE	903.80	896.16 EX 36" NW 896.16 EX 36" E
S1-13 DW	103+40	30.0 LT	MANHOLES, TYPE A, 6-DIAMETER, TYPE 1 FRAME, CLOSED LID, SPECIAL	904.30	892.30 42" W 899.30 18" SE
S1-14	103+58	19.3 LT	CATCH BASINS, TYPE A, 4-DIAMETER, TYPE 24 FRAME AND GRATE	905.40	899.00 18" NW 899.70 12" E
S1-15	103+57	28.8 RT	CATCH BASINS, TYPE A, 5-DIAMETER, TYPE 24 FRAME AND GRATE	905.25	896.75 EX 36" W 896.85 EX 12" SW 897.05 EX 24" E
S1-16	104+53	30.2 RT	MANHOLES, TYPE A, 6-DIAMETER, TYPE 24 FRAME AND GRATE	908.36	903.37 15" W 902.00 12" SW 903.37 12" E
S1-17	104+61	17.5 LT	CATCH BASINS, TYPE A, 4-DIAMETER, TYPE 24 FRAME AND GRATE	908.86	901.00 12" W 904.37 12" E 905.60 12" N
S1-18	104+61	25.1 LT	CATCH BASINS, TYPE C, TYPE 8 GRATE	909.00	905.70 12" SW
S1-19	104+70	17.5 LT	CATCH BASINS, TYPE C, TYPE 24 FRAME AND GRATE	909.23	904.45 12" W

PIPE NO.	FROM	TO	PIPE TYPE	LENGTH FT	SLOPE %	TRENCH BACKFILL CU YD
P1-1	ex MH1-2	S1-8	STORM SEWERS, RUBBER GASKET, CLASS A, TYPE 2 3/8"	59	0.98%	81.0
P1-2	S1-3	S1-9	STORM SEWERS, RUBBER GASKET, CLASS A, TYPE 2 3/8"	21	3.71%	31.2
P1-3	S1-3	S1-1	STORM SEWERS, RUBBER GASKET, CLASS A, TYPE 2 3/8"	11	0.39%	22.8
P1-4	S1-3 DW	S1-1	STORM SEWERS, RUBBER GASKET, CLASS A, TYPE 2 1/8"	12	0.83%	1.6
P1-5	S1-4	S1-3 DW	STORM SEWERS, RUBBER GASKET, CLASS A, TYPE 2 1/2"	8	0.62%	4.4
P1-6	S1-5 DW	S1-3 DW	STORM SEWERS, RUBBER GASKET, CLASS A, TYPE 2 1/2"	15	0.33%	0.0
P1-7	S1-7	S1-2	STORM SEWERS, RUBBER GASKET, CLASS A, TYPE 2 3/8"	45	0.02%	101.3
P1-8	S1-6	S1-4 DW	STORM SEWERS, RUBBER GASKET, CLASS A, TYPE 2 1/2"	8	0.62%	4.4
P1-9	S1-10 DW	S1-4 DW	STORM SEWERS, RUBBER GASKET, CLASS A, TYPE 2 1/2"	76	0.33%	74.3
P1-10	S1-9	ex MH1-3	STORM SEWERS, RUBBER GASKET, CLASS A, TYPE 2 3/8"	28	0.14%	45.7
P1-11	S1-11	S1-10 DW	STORM SEWERS, RUBBER GASKET, CLASS A, TYPE 2 1/2"	12	0.42%	1.9
P1-12	S1-13 DW	S1-10 DW	STORM SEWERS, RUBBER GASKET, CLASS A, TYPE 2 1/2"	88	0.34%	107.2
P1-13	S1-14	S1-13 DW	STORM SEWERS, RUBBER GASKET, CLASS A, TYPE 2 1/8"	21	1.43%	2.7
P1-14	S1-17	S1-14	STORM SEWERS, RUBBER GASKET, CLASS A, TYPE 2 1/2"	103	1.26%	85.3
P1-15	S1-16	ex MH1-4	STORM SEWERS, RUBBER GASKET, CLASS A, TYPE 2 1/8"	53	2.42%	23.8
P1-16	S1-18	ex DW1-3	STORM SEWERS, RUBBER GASKET, CLASS A, TYPE 2 1/2"	20	0.50%	9.7
P1-17	ex MH1-5	S1-18	STORM SEWERS, RUBBER GASKET, CLASS A, TYPE 2 1/2"	35	3.80%	16.8
P1-18	S1-18	S1-17	STORM SEWER (WATER MAIN REQUIREMENTS) 12 INCH	8	1.25%	2.1
P1-19	S1-19	S1-17	STORM SEWER (WATER MAIN REQUIREMENTS) 12 INCH	10	0.80%	3.9



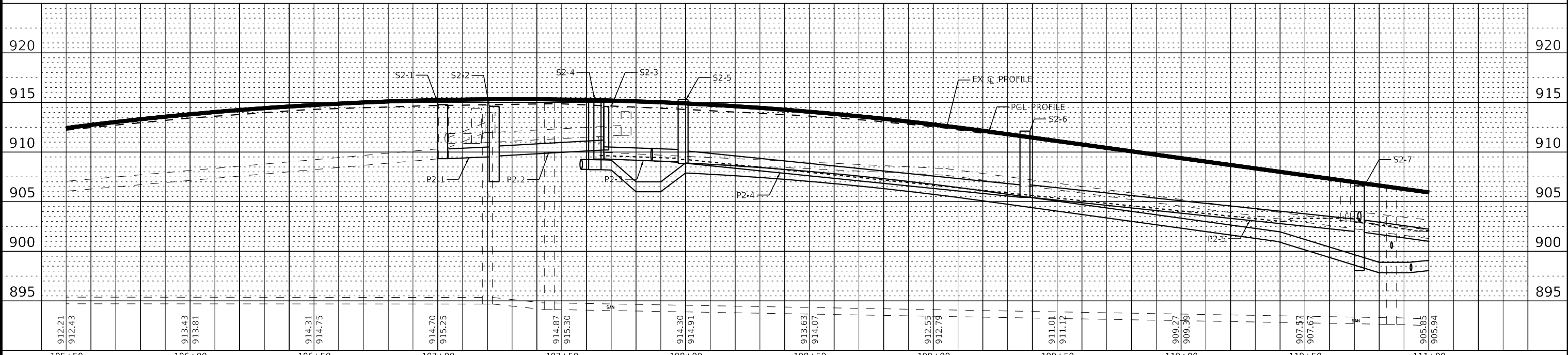
	USER NAME = mmorij	DESIGNED - AKS	REVISED - ADDENDUM B 10/25/2021	STATE OF ILLINOIS DEPARTMENT OF TRANSPORTATION	DRAINAGE AND UTILITIES IL ROUTE 176	F.A.P. RTE. = 335	SECTION = 15-00124-00-PV	COUNTY = MCHENRY	TOTAL SHEETS = 121	SHEET NO. = 41
	PLOT SCALE = 40.0000' / in.	CHECKED - DJS	REVISOR -			SCALE: 1" = 20'	SHEET 1 OF 3 SHEETS	STA. 100+00 TO STA. 105+50	ILLINOIS FED. AID PROJECT	CONTRACT NO. 61H27

STATE OF ILLINOIS - PROFESSIONAL DESIGN FIRM
 LICENSE NO. - 184-001121 - EXPIRES 4/30/2022
 MODEL - Default
 FILE NAME: I:\Crystal Lake\CR181171-176-Utilities Main St PH ILCAD\Sheets\181171_s52-sht-DU-IL176-1.dgn



STRUCTURE NO.	STA.	OFFSET FT	STRUCTURE TYPE	RM/EOP	INVERTS
S2-1	107+02	35.3 RT	MANHOLES, TYPE A, 4-DIAMETER, TYPE 1 FRAME, CLOSED LID	914.78	909.32 EX 12" W 909.32 12" SE
S2-2	107+23	44.8 RT	CATCH BASINS, TYPE A, 4-DIAMETER, TYPE 11 FRAME AND GRATE	914.62	909.62 12" NW 909.62 12" E
S2-3	107+58	44.2 RT	INLETS, TYPE A, TYPE 11 FRAME AND GRATE	914.60	910.20 12" W
S2-4	107+85	17.8 LT	MANHOLES, TYPE A, 4-DIAMETER, TYPE 1 FRAME, CLOSED LID	915.30	909.30 15" SE 910.80 EX 8" N
S2-5	107+99	38.2 RT	MANHOLES, TYPE A, 4-DIAMETER, TYPE 1 FRAME, CLOSED LID	915.30	908.30 15" E 909.00 15" NW
S2-6	108+37	38.0 RT	MANHOLES, TYPE A, 4-DIAMETER, TYPE 1 FRAME, CLOSED LID	912.12	905.44 15" E 905.44 15" W
S2-7	110+72	33.3 RT	CATCH BASINS, TYPE A, 4-DIAMETER, TYPE 11 FRAME AND GRATE	908.60	901.90 18" E 902.00 15" W 903.00 12" S

PPE NO.	FROM	TO	PIPE TYPE	LENGTH FT	SLOPE %	TRENCH BACKFILL CU YD
P2-1	S2-2	S2-1	STORM SEWERS, RUBBER GASKET, CLASS A, TYPE 2 12"	22	0.91%	10.5
P2-2	S2-3	S2-2	STORM SEWERS, RUBBER GASKET, CLASS A, TYPE 2 12"	46	1.29%	18.7
P2-3	S2-4	S2-6	STORM SEWER (WATER MAIN REQUIREMENTS) 15 INCH	63	0.48%	36.1
P2-4	S2-5	S2-8	STORM SEWERS, RUBBER GASKET, CLASS A, TYPE 2 15"	137	2.53%	29.1
P2-5	S2-6	S2-7	STORM SEWERS, RUBBER GASKET, CLASS A, TYPE 2 15"	135	2.55%	6.6
P2-6	ex IN2-1	S2-7	STORM SEWER (WATER MAIN REQUIREMENTS) 12 INCH	15	3.33%	3.8
P2-7	S2-7	S3-3	STORM SEWER (WATER MAIN REQUIREMENTS) 18 INCH	36	2.75%	16.9



STATE OF ILLINOIS - PROFESSIONAL DESIGN FIRM
 LICENSE NO. - 184-001121 - EXPIRES 4/30/2022
 MORNING 10/25/2021 11:55:29 AM
 FILE NAME: I:\Crystal Lake\CR181171-176-North Main St PH IL\CAD\Sheets\181171_ss2-sht-DU-IL176-2.dgn



USER NAME = mornjg	DESIGNED - AKS	REVISED - ADDENDUM B 10/25/2021
PLOT SCALE = 40.0000' / in.	DRAWN - KAR	REVISED -
PLOT DATE = 10/25/2021	CHECKED - DJS	REVISED -
	DATE - 10-12-2021	FILE - 181171_ss2-sht-DU-IL176-2.dgn

STATE OF ILLINOIS
 DEPARTMENT OF TRANSPORTATION

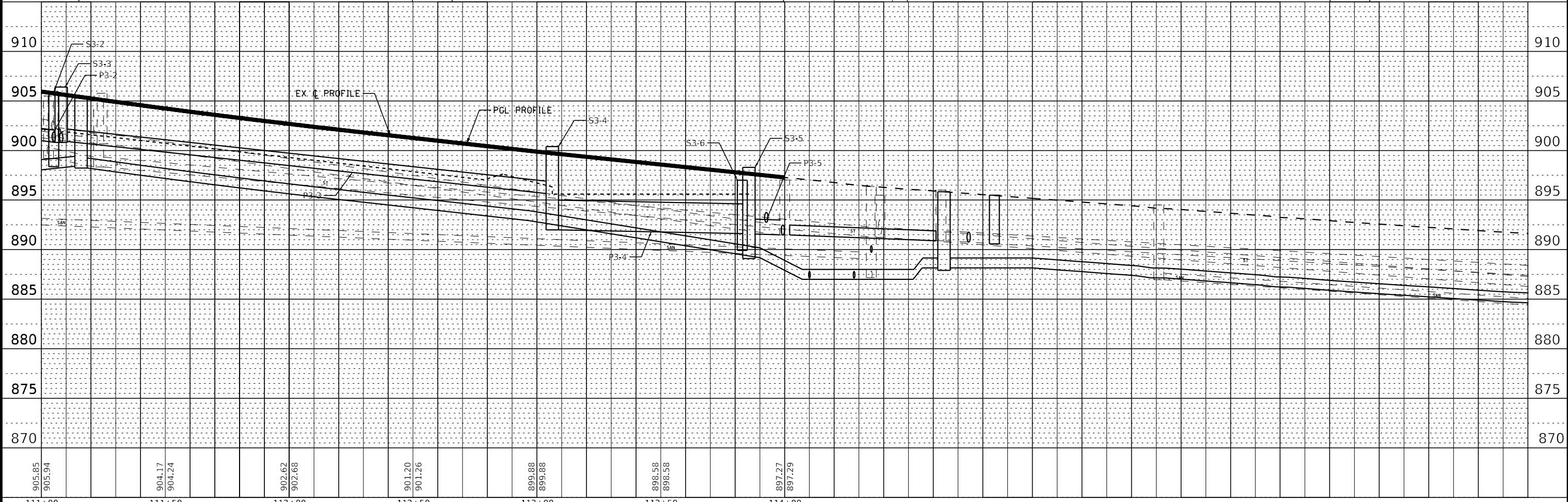
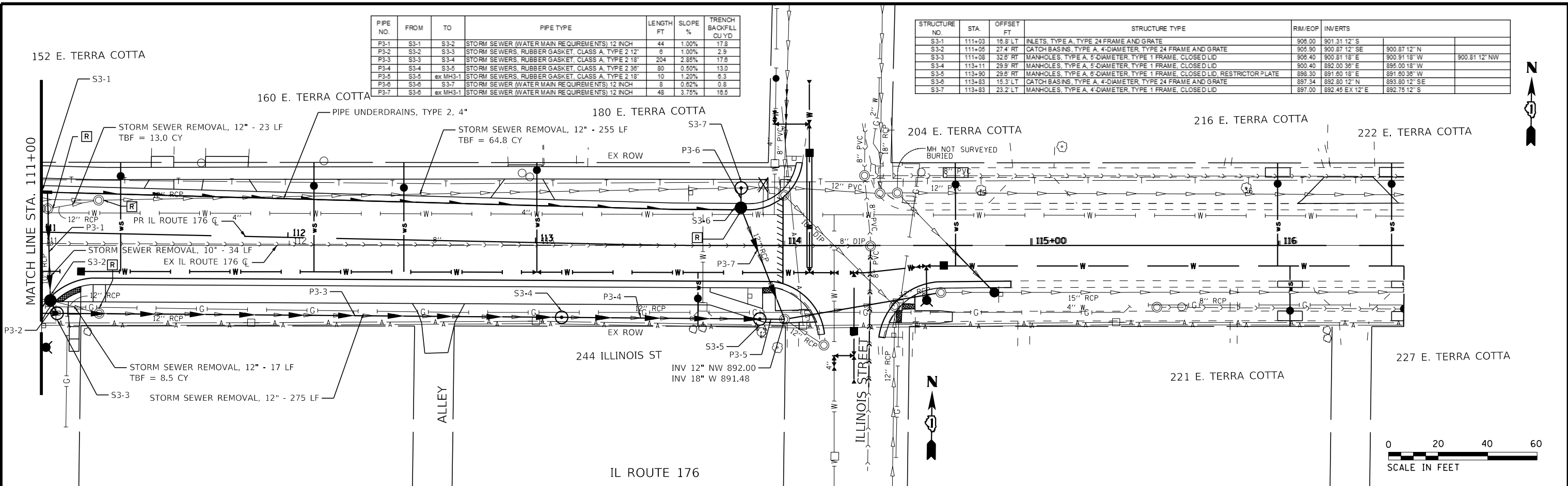
DRAINAGE AND UTILITIES
 IL ROUTE 176

SCALE: 1" = 20' SHEET 2 OF 3 SHEETS STA. 105+50 TO STA. 111+00

F.A.P. RTE. 335	SECTION 15-00124-00-PV	COUNTY MCHENRY	TOTAL SHEETS 121	SHEET NO. 42
ILLINOIS FED. AID PROJECT			CONTRACT NO. 61H27	

PIPE NO.	FROM	TO	PIPE TYPE	LENGTH FT	SLOPE %	TRENCH BACKFILL CU YD
P3-1	S3-1	S3-2	STORM SEWER (WATER MAIN REQUIREMENTS) 12 INCH	44	1.00%	17.8
P3-2	S3-2	S3-3	STORM SEWERS, RUBBER GASKET, CLASS A, TYPE 2 12"	8	1.00%	2.9
P3-3	S3-3	S3-4	STORM SEWERS, RUBBER GASKET, CLASS A, TYPE 2 18"	204	2.88%	17.6
P3-4	S3-4	S3-5	STORM SEWERS, RUBBER GASKET, CLASS A, TYPE 2 36"	80	0.50%	13.0
P3-5	S3-5	ex MH3-1	STORM SEWERS, RUBBER GASKET, CLASS A, TYPE 2 18"	10	1.20%	6.3
P3-6	S3-6	S3-7	STORM SEWER (WATER MAIN REQUIREMENTS) 12 INCH	8	0.62%	0.8
P3-7	S3-6	ex MH3-1	STORM SEWER (WATER MAIN REQUIREMENTS) 12 INCH	48	3.75%	16.5

STRUCTURE NO.	STA	OFFSET FT	STRUCTURE TYPE	RIM/EOP	INVERTS
S3-1	111+03	16.8' LT	INLETS, TYPE A, TYPE 24 FRAME AND GRATE	908.00	901.31 12' S
S3-2	111+05	27.4' RT	CATCH BASINS, TYPE A, 4-DIAMETER, TYPE 24 FRAME AND GRATE	905.90	900.87 12' SE
S3-3	111+08	32.5' RT	MANHOLES, TYPE A, 5-DIAMETER, TYPE 1 FRAME, CLOSED LID	905.40	900.81 15' E
S3-4	113+11	29.9' RT	MANHOLES, TYPE A, 5-DIAMETER, TYPE 1 FRAME, CLOSED LID	900.40	895.00 18' W
S3-5	113+30	29.8' RT	MANHOLES, TYPE A, 8-DIAMETER, TYPE 1 FRAME, CLOSED LID, RESTRICTOR PLATE	898.30	891.60 18' E
S3-6	113+83	15.3' LT	CATCH BASINS, TYPE A, 4-DIAMETER, TYPE 24 FRAME AND GRATE	897.34	892.80 12' N
S3-7	113+83	23.2' LT	MANHOLES, TYPE A, 4-DIAMETER, TYPE 1 FRAME, CLOSED LID	897.00	892.45 EX 12' E
					892.76 12' S



STATE OF ILLINOIS - PROFESSIONAL DESIGN FIRM \Pictdr\adef-BW_Default.plt
 LICENSE NO. - 184-00121 - EXPIRES 4/30/2019
 10/25/2021 10:55:10 AM
 I:\CrystalLake\CRYL\18171-North Main St PH IL\CAD\Sheets\18171_ss2-sht-DU-IL176-3.dgn



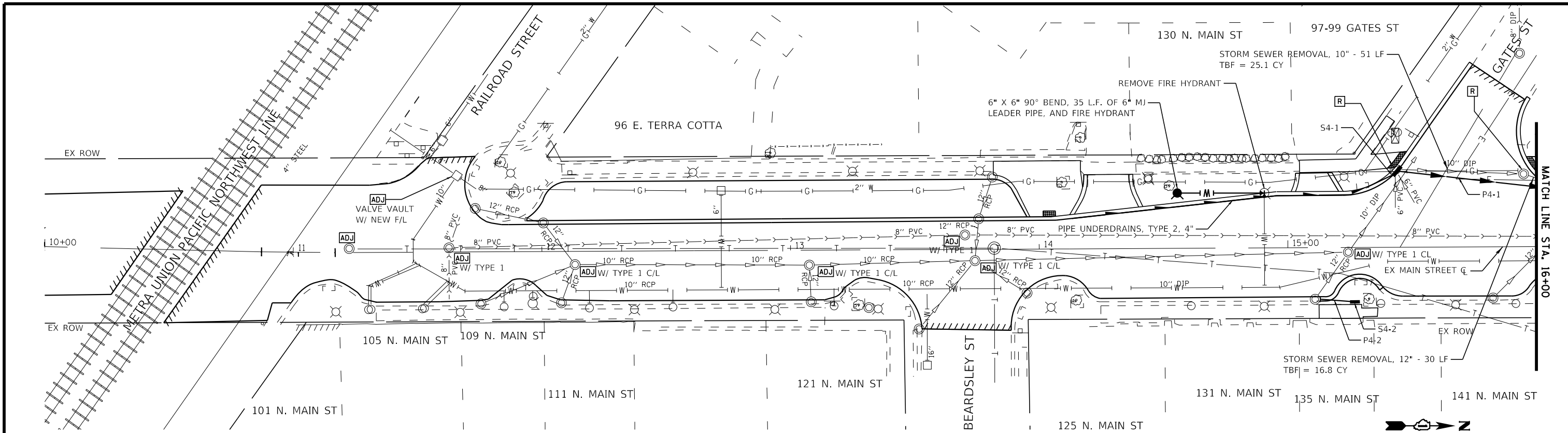
USER NAME = mornij	DESIGNED - AKS	REVISED - ADDENDUM B 10/25/2021
PLOT SCALE = 40,0000' / in.	DRAWN - KAR	REVISED -
PLOT DATE = 10/25/2021	CHECKED - DIS	REVISED -
	DATE - 10-12-2021	FILE 181171_ss2-sht-DU-IL176-3.dgn

STATE OF ILLINOIS
DEPARTMENT OF TRANSPORTATION

DRAINAGE AND UTILITIES
IL ROUTE 176

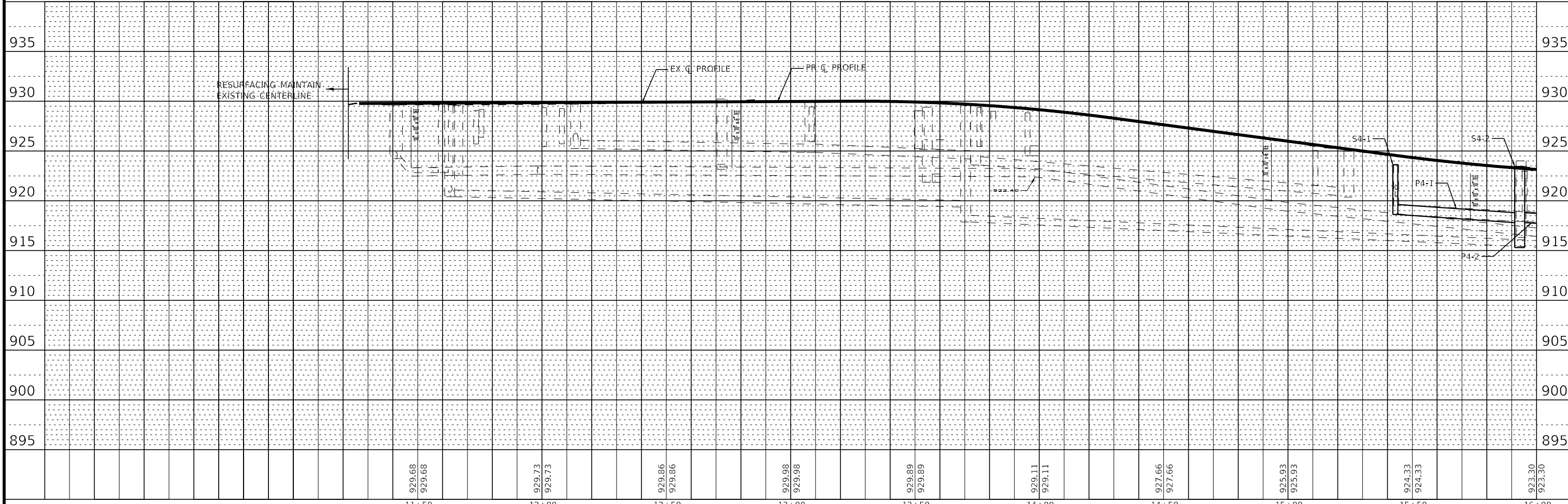
SCALE: 1" = 20'
SHEET 3 OF 3 SHEETS
STA. 111+00 TO STA. 116+50

F.A.P. RTE. 335	SECTION 15-00124-00-PV	COUNTY MCHENRY	TOTAL SHEETS 121	SHEET NO. 43
CONTRACT NO. 61H27			ILLINOIS FED. AID PROJECT	



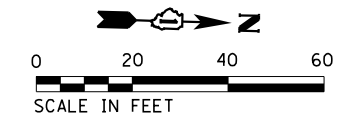
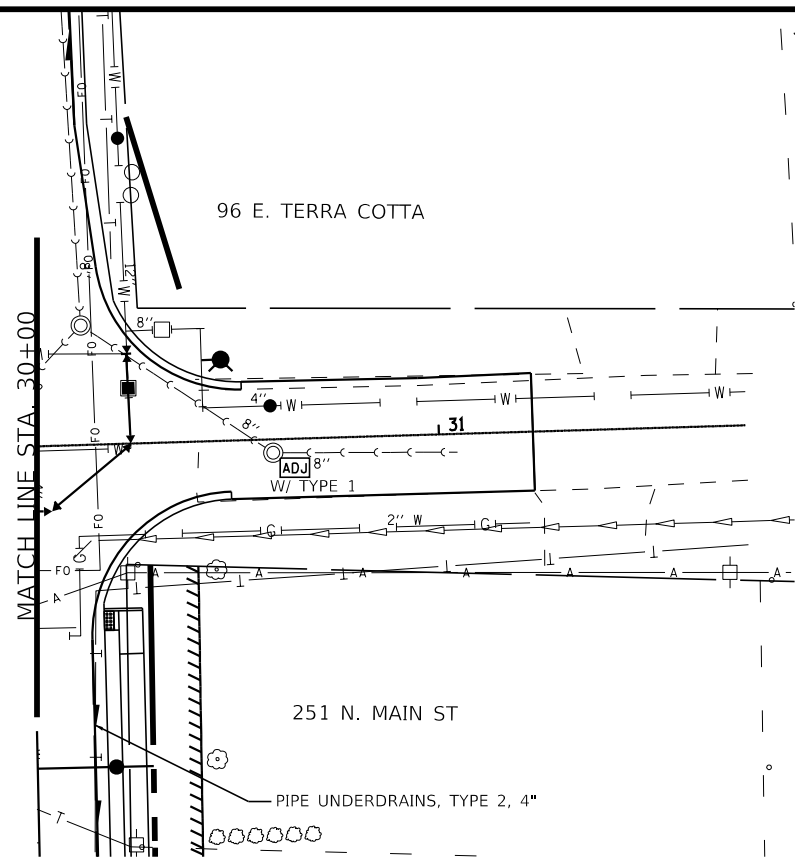
STRUCTURE NO.	STA.	OFFSET FT	STRUCTURE TYPE	RIM/EOP	INVERTS
S4-1	15+43	31.3 LT	INLETS, TYPE A, TYPE 1 FRAME, OPEN LID	923.62	918.82 12" NW
S4-2	15+27	21.2 RT	INLETS, TYPE A, TYPE 1 FRAME, OPEN LID	924.80	921.80 12" SW

PIPE NO.	FROM	TO	PIPE TYPE	LENGTH FT	SLOPE %	TRENCH BACKFILL CU YD
P4-1	S4-1	S5-5	STORM SEWERS, RUBBER GASKET, CLASS A, TYPE 21"	64	1.50%	31.3
P4-2	S4-2	EX	STORM SEWERS, RUBBER GASKET, CLASS A, TYPE 21"	14	1.50%	3.5

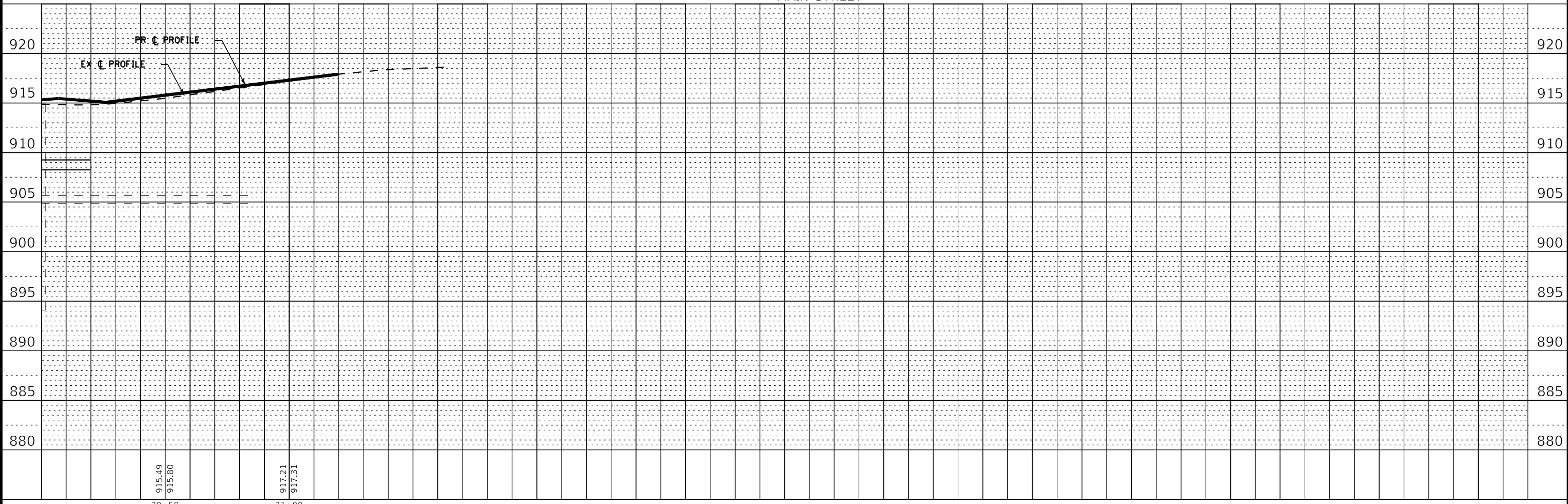


STATE OF ILLINOIS - PROFESSIONAL DESIGN FIRM \Pictor\adef-sw_Default.plt
 LICENSE NO. - 184-00121 - EXPIRES 4/30/2019
 10/25/2021 10:25:12 AM in:\CrystalLake\CRYL\181171-North Main St PH II\CAD\Sheets\181171-ss2-sht-DU-Main-2.dgn
 mornig

	USER NAME = mornig	DESIGNED - AKS	REVISED Δ ADDENDUM B 10/25/2021	STATE OF ILLINOIS DEPARTMENT OF TRANSPORTATION	DRAINAGE AND UTILITIES MAIN STREET	F.A.P. RTE. 335	SECTION 15-00124-00-PV	COUNTY MCHENRY	TOTAL SHEETS 121	SHEET NO. 44
		PLOT SCALE = 40,0000' / in.	CHECKED - DJS			REVISED -	SCALE: 1" = 20'	SHEET 2 OF 5 SHEETS	STA. 10+00 TO STA. 16+00	CONTRACT NO. 61H27
	PLOT DATE = 10/25/2021	DATE - 10-12-2021	FILE 181171-ss2-sht-DU-Main-2.dgn							



MAIN STREET



STATE OF ILLINOIS - PROFESSIONAL DESIGN FIRM \Programs\pdr\adp\bw_Default.dwg
 LICENSE NO. - 184-00121 - EXPIRES 4/30/2019
 10/25/2021 11:55:15 AM in:\CrystalLake\CRYL\181171-North Main St PH I\CAD\Sheets\181171-ss2-sht-DU-Main-5.dgn
 mornij



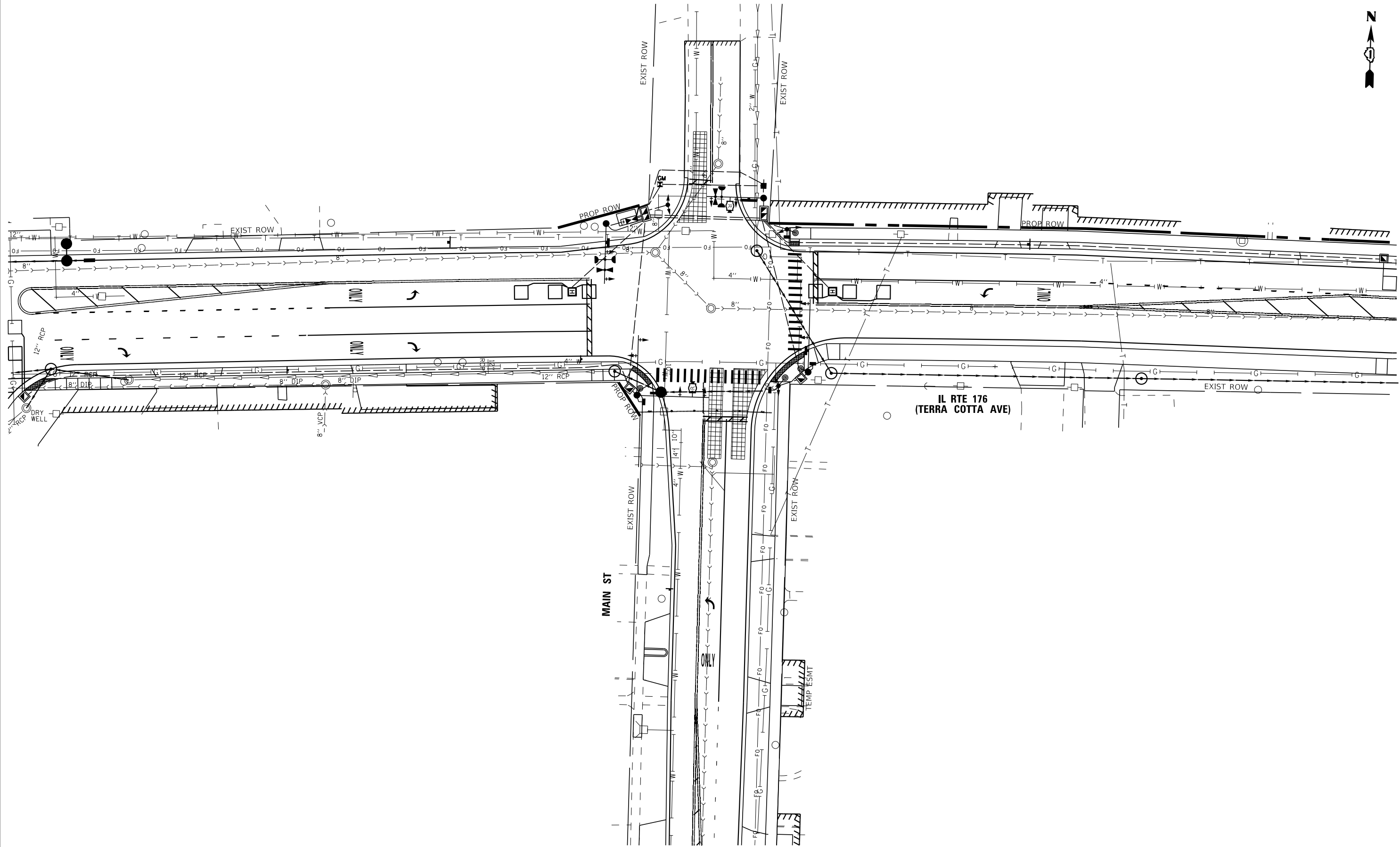
USER NAME = mornij	DESIGNED - AKS	REVISED Δ ADDENDUM B 10/25/2021
PLOT SCALE = 40,0000 ' / in.	DRAWN - KAR	REVISED -
PLOT DATE = 10/25/2021	CHECKED - DJS	REVISED -
	DATE - 10-12-2021	FILE 181171_ss2-sht-DU-Main-5.dgn

STATE OF ILLINOIS
DEPARTMENT OF TRANSPORTATION

DRAINAGE AND UTILITIES
MAIN STREET

SCALE: 1" = 20' SHEET 5 OF 5 SHEETS STA. 30+15 TO STA. 32+00

F.A.P. RTE.	SECTION	COUNTY	TOTAL SHEETS	SHEET NO.
335	15-00124-00-PV	MCHENRY	121	47
CONTRACT NO. 61H27				
ILLINOIS FED. AID PROJECT				



STATE OF ILLINOIS - PROFESSIONAL DESIGN FIRM
 LICENSE NO. - 184-001121 - EXPIRES 4/30/2022
 morning 10/25/2021 11:55:43 AM
 FILE NAME: R:\CADD\181171\181171_176_Utility.dgn



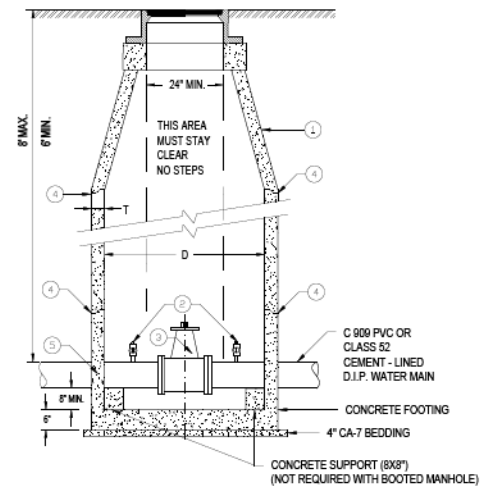
USER NAME = mornij	DESIGNED - DJS	REVISED Δ ADDENDUM B 10/25/2021
PLOT SCALE = 40,0000' / in.	DRAWN - KAR	REVISED -
PLOT DATE = 10/25/2021	CHECKED - AKS	REVISED -
	DATE - 10-12-2021	FILE - 181171_176_Utility.dgn

STATE OF ILLINOIS
 DEPARTMENT OF TRANSPORTATION

UTILITY INFORMATION SHEET	
IL RTE 176 (TERRA COTTA AVE) AND MAIN ST	
SCALE: 1" = 20'	SHEET 1 OF 1 SHEETS
STA.	TO STA.

F.A.P. RTE.	SECTION	COUNTY	TOTAL SHEETS	SHEET NO.
335	15-00124-00-PV	MCHENRY	121	70
CONTRACT NO. 61H27				
ILLINOIS FED. AID PROJECT				

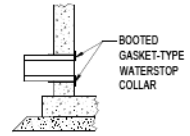
TS XXXX
 ECON XX



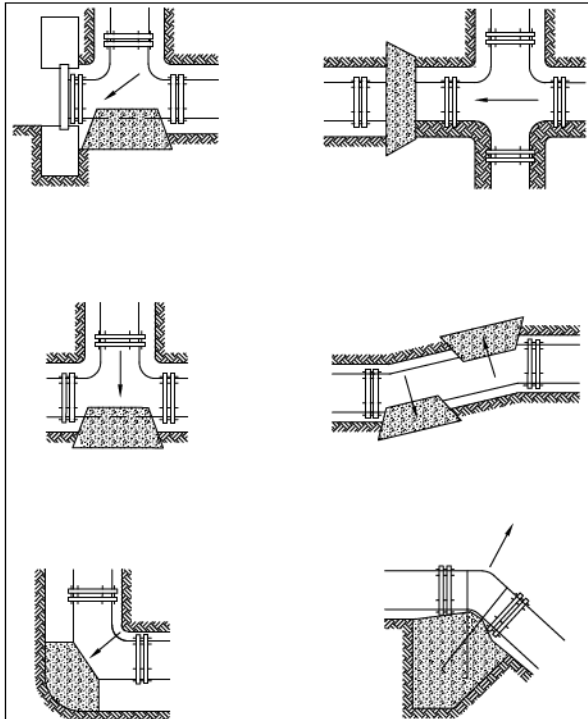
- LEGEND:**
- 1. CONCENTRIC CONES REQUIRED
 - 2. 1" (MIN) MUELLER, A.Y. McDONALD, OR FORD NO LEAD CORPORATION STOP EACH SIDE OF VALVE MUST BE A COMPRESSION FITTING.
 - 3. MUELLER 2261 OR AMERICAN FLOW CONTROL 2500-1 RESILIENT SEAT GATE VALVE
 - 4. WATER TIGHT JOINTS USING EZ-STIK PREMIUM BUTYL SEALANT ASTM C990 FOR FRAMES ADJUSTING RINGS AND BARREL SECTIONS.
 - 5. GASKET-TYPE WATERSTOP COLLAR FOR ALL WATER MAIN CONNECTIONS

- NOTES:**
1. ALL MANHOLES MUST BE DAMP PROOF PER IDOT SPECIFICATIONS 1080.
 2. DRAIN FOR VALVE VAULT SHALL BE CONSTRUCTED ONLY WHEN SHOWN ON THE PLANS.
 3. CAST IRON MANHOLE FRAME & COVER SIMILAR TO NEEHAH R-1712 WITH STANDARD DUTY, NON-ROCKING TYPE LIDS WITH "CITY OF CRYSTAL LAKE WATER" CAST INTO LID. (NEEHAH R-2535, MAY BE USED IN GRASSY AREAS)
 4. HDPE PLASTIC MANHOLE ADJUSTING RINGS CONFORMING TO THE REQUIREMENTS OF HS28 OF THE AASHTO STANDARD SPECIFICATIONS AND ASTM D1248-84. ALL ADJUSTING RINGS SHALL BE STABILIZED AGAINST ULTRA VIOLET LIGHT. ADJUSTING RING HEIGHT NOT TO EXCEED 8" WITH A MAXIMUM OF THREE (3) ADJUSTMENT RINGS. THE ANNULAR SPACE BETWEEN RINGS AND CONE BASIN, THE RINGS AND THE RINGS COVER FRAME SHALL BE SEALED UTILIZING AN APPROVED BUTYL SEALANT. ALL ADJUSTMENT FOR MATCHING ROAD GRADE SHALL BE MADE UTILIZING A MOLDED AND INDEXED SLOPE RING.
 5. ALL UNDERGROUND NUTS, BOLTS & WASHERS MUST BE STAINLESS STEEL.
 6. VALVE VAULT REQUIRED FOR WATER SERVICES GREATER THAN OR EQUAL TO 4". SEE VAULT SIZE TABLE.
 7. STEPS WITHIN VAULT TO BE REMOVED PRIOR TO CITY ACCEPTANCE.

DIAMETER OF WATER MAIN	VAULT SIZE	
	DIAMETER	WALL THICKNESS
4" AND 6"	4 FT.	4"
UP TO 12"	5 FT.	5"
16" AND OVER	6 FT.	6"



Revised:	Drawing Name	Drawing Number	
1. 06/12/2015 2. 09/18/2021 - KL 1" CORP AND STEPS REMOVED 3. 4.	STANDARD VALVE VAULT	UW-01 Date: 05/29/2015 Drawn: JH Checked: VR	

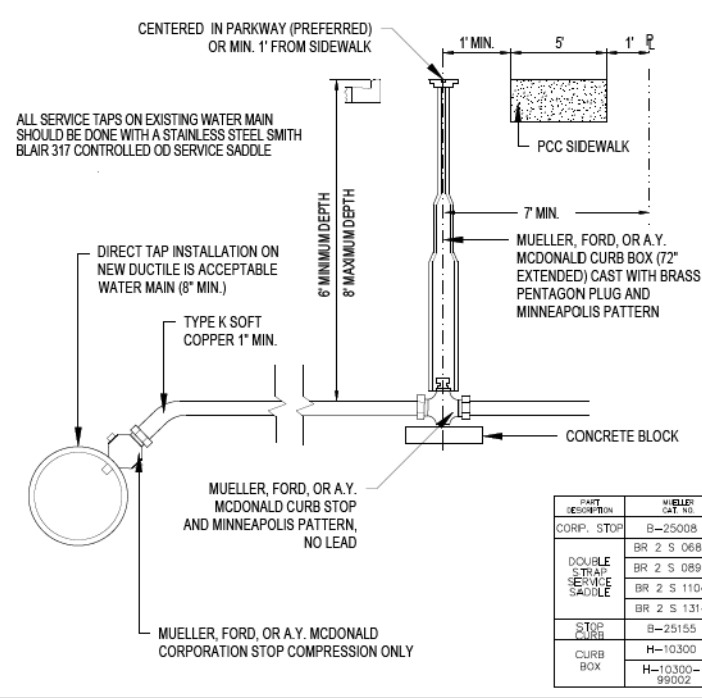


BEARING AREA (SQ. FT.)

PIPE SIZE	TEE/PLUG	90°	45°	21 1/2°	11 1/4°
6	4	2	1	1	1
8	6	4	3	1	1
10	7	5	3	1	1
12	8	6	4	2	2
14	12	9	6	3	3
16	15	12	7	3	3
18	18	15	9	4	4
24	40	30	15	5	5

- NOTES:**
- ALL BLOCKING SHALL BE POURED CLASS SI CONCRETE AGAINST UNDISTURBED EARTH.
 - ALL BENDS OR ELBOWS GREATER THAN OR EQUAL TO 11 1/4° SHALL HAVE THRUST BLOCKING, FORM AS TO NOT COVER BOLTS.
 - IN LIEU OF THRUST BLOCKING, "MEGA LUG" (EBA) JOINT RESTRAINTS CAN BE USED AS APPROVED BY THE ENGINEER.

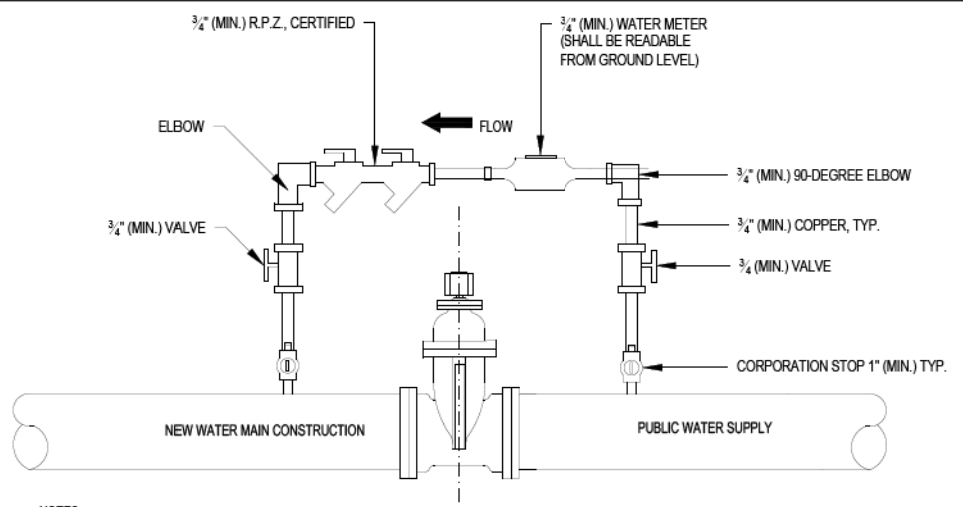
Revised:	Drawing Name	Drawing Number	
1. 06/12/2015 2. 3. 4.	THRUST BLOCK INSTALLATION	UW-03 Date: 05/29/2015 Drawn: JH Checked: VR	



- NOTES:**
1. NO CORPORATION STOPS OR CURB BOXES MAY BE LOCATED UNDER PAVED AREAS INCLUDING DRIVES AND SIDEWALKS.
 2. ALL WATER MAIN HARDWARE SHALL BE MUELLER, A.Y. McDONALD, OR FORD. NO LEAD, COMPRESSION ONLY.
 3. SERVICE TO BE CONTINUOUS WITHOUT JOINTS FROM CORPORATION STOP TO CURB STOP.
 4. MULTIPLE TAPS INTO MAIN SHALL BE NO CLOSER THAN 2' APART.
 5. TRENCH FROM MAIN TO BACK OF SIDEWALK TO BE COMPACTED TRENCH BACKFILL.
 6. NO FLARE FITTINGS WILL BE ACCEPTED. COMPRESSION ONLY.
 7. ALL CURB BOX ADJUSTMENTS TO BE MADE WITH GALVANIZED PIPE AND COUPLINGS (SCREWED ON).
 8. B-BOXES (TWO OR MORE) FOR ALL MULTI-UNIT BUILDINGS MUST BE CLEARLY AND PERMANENTLY LABELED BY WELDING THE UNIT NUMBER/LETTER ONTO THE B-BOX TOP.
 9. B-BOXES TO BE USED FOR SERVICES LESS THAN OR EQUAL TO 2".

PIPE DESCRIPTION	MUELLER CAT. NO.	FORD CAT. NO.	A.Y. McDONALD CAT. NO.	SERVICE SIZE
CORP. STOP	B-2500B	FB1000-Q	4701BQ	
DOUBLE STRAP SERVICE SADDLE	BR 2 S 0684 CC	20285-750-CC	3855 6	
	BR 2 S 0899 CC	20285-962-CC	3855 8	
	BR 2 S 1104 CC	20285-1212-CC	3855 10	
	BR 2 S 1314 CC	20285-1438-CC	3855 12	
STOP SADDLE	B-25155	B44-M-Q	6104Q	
CURB BOX	H-10300	EM2-60-56	5614	1"
	H-10300-99002	EM2-60-57	5615	1.5" & 2"

Revised:	Drawing Name	Drawing Number	
1. 06/12/2015 2. 01/25/2021 KL Eliminate 1.25" Services 3. 4.	WATER SERVICE INSTALLATION FOR DUCTILE AND CAST IRON WATER MAIN	UW-04 Date: 03/17/2014 Drawn: DD Checked: VR	



- NOTES:**
1. VALVE JUMPER METER SHALL BE INSTALLED INSIDE VALVE VAULT AND MUST BE VISIBLE FROM THE GROUND SURFACE. INSTALLATION OUTSIDE OF THE VALVE VAULT MUST BE APPROVED BY THE ENGINEER.
 2. VALVE JUMPER METER SHALL BE PROTECTED FROM COLD WEATHER WITH BLANKETS WHEN NECESSARY.
 3. JUMPER SHALL BE INSTALLED IMMEDIATELY AFTER SECOND DAY CHLORINATION SAMPLE (SEE UW-09A).
 4. ALL FITTINGS, WHIPS, AND HARDWARE NECESSARY TO CONNECT 1" CORPORATION STOPS TO CERTIFIED VALVE JUMPERS ARE THE RESPONSIBILITY OF THE CONTRACTOR.

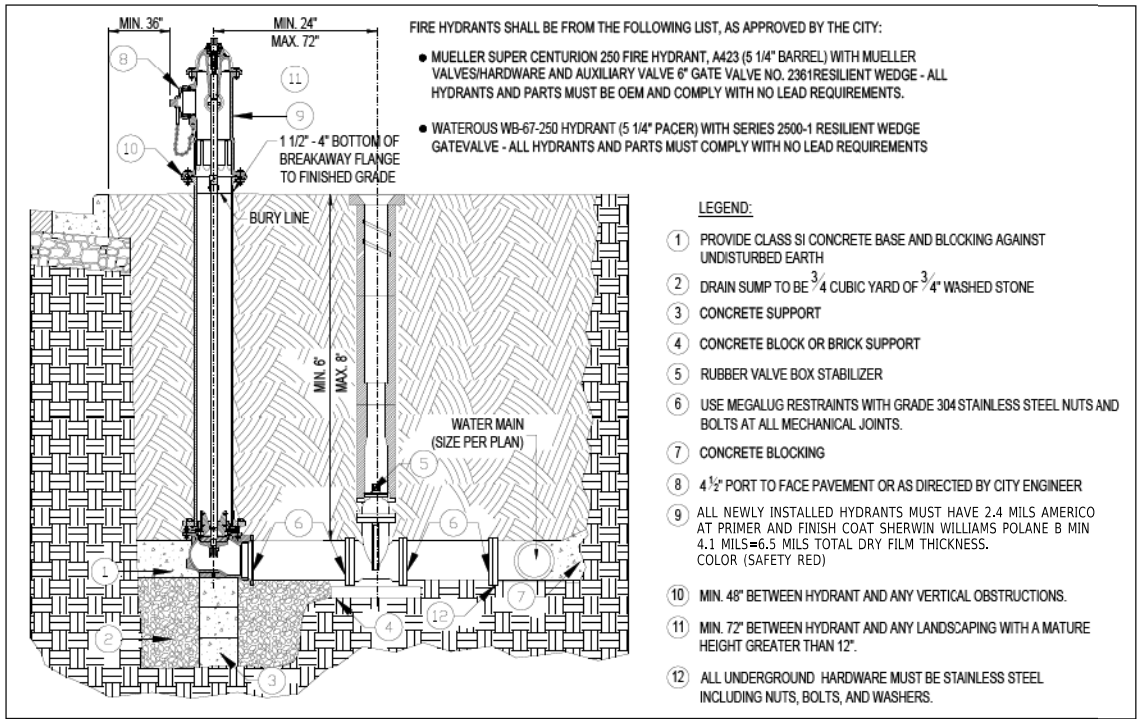
Revised:	Drawing Name	Drawing Number	
1. 06/12/2015 2. 7/23/2021 KL JUMPER INSIDE VALVE VAULT. 1" CORP 3. 4.	WATER VALVE JUMPER	UW-05 Date: 06/01/2015 Drawn: JH Checked: VR	

	USER NAME = mornjg	DESIGNED - DJS	REVISED - ADDENDUM B 10/25/2021
	PLOT SCALE = 80.0000' / in.	DRAWN - KAR	REVISED -
	PLOT DATE = 10/25/2021	CHECKED - AKS	REVISED -
		DATE - 10-12-2021	FILE - 181171_ss2-sht-WM_Dets.dgn

STATE OF ILLINOIS
DEPARTMENT OF TRANSPORTATION

SCALE: NONE		SHEET 1 OF 3 SHEETS		STA. TO STA.		WATER MAIN DETAILS		F.A.P. RTE. 335	SECTION 15-00124-00-PV	COUNTY MCHENRY	TOTAL SHEETS 121	SHEET NO. 94
										CONTRACT NO. 61H27		
										ILLINOIS FED. AID PROJECT		

STATE OF ILLINOIS - PROFESSIONAL DESIGN FIRM
 LICENSE NO. - 184-001121 - EXPIRES 4/30/2022
 morning 10/25/2021 11:55:57 AM
 FILE NAME: R:\CADD\181171\181171_181171_ss2-sht-WM_Dets.dgn
 ...:\Pictd\rv\pdf\BW_Default.plt
 ...:\CAD\PIPs\181171_Plan\Set.tbl
 R:\Crystal Lake\CRYL\181171-North Main St PH I\CAD\Sheets\181171_ss2-sht-WM_Dets.dgn



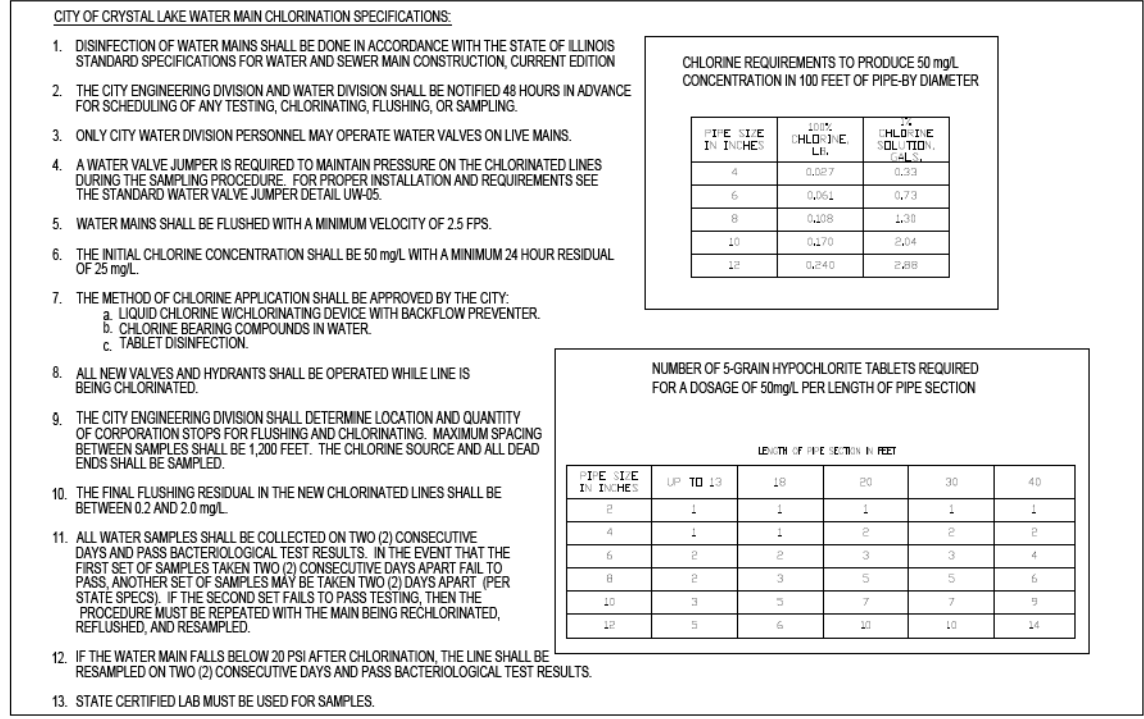
FIRE HYDRANTS SHALL BE FROM THE FOLLOWING LIST, AS APPROVED BY THE CITY:

- MUELLER SUPER CENTURION 250 FIRE HYDRANT, A423 (5 1/4" BARREL) WITH MUELLER VALVE HARDWARE AND AUXILIARY VALVE 6" GATE VALVE NO. 2361 RESILIENT WEDGE - ALL HYDRANTS AND PARTS MUST BE OEM AND COMPLY WITH NO LEAD REQUIREMENTS.
- WATEROUS WB-67-250 HYDRANT (5 1/4" PACER) WITH SERIES 2500-1 RESILIENT WEDGE GATE VALVE - ALL HYDRANTS AND PARTS MUST COMPLY WITH NO LEAD REQUIREMENTS

- LEGEND:**
- PROVIDE CLASS SI CONCRETE BASE AND BLOCKING AGAINST UNDISTURBED EARTH
 - DRAIN SUMP TO BE 3/4 CUBIC YARD OF 3/4" WASHED STONE
 - CONCRETE SUPPORT
 - CONCRETE BLOCK OR BRICK SUPPORT
 - RUBBER VALVE BOX STABILIZER
 - USE MEGALUG RESTRAINTS WITH GRADE 304 STAINLESS STEEL NUTS AND BOLTS AT ALL MECHANICAL JOINTS.
 - CONCRETE BLOCKING
 - 4 1/2" PORT TO FACE PAVEMENT OR AS DIRECTED BY CITY ENGINEER
 - ALL NEWLY INSTALLED HYDRANTS MUST HAVE 2.4 MILS AMERICO AT PRIMER AND FINISH COAT SHERWIN WILLIAMS POLANE B MIN 4.1 MILS = 6.5 MILS TOTAL DRY FILM THICKNESS. COLOR (SAFETY RED)
 - MIN. 48" BETWEEN HYDRANT AND ANY VERTICAL OBSTRUCTIONS.
 - MIN. 72" BETWEEN HYDRANT AND ANY LANDSCAPING WITH A MATURE HEIGHT GREATER THAN 12".
 - ALL UNDERGROUND HARDWARE MUST BE STAINLESS STEEL INCLUDING NUTS, BOLTS, AND WASHERS.

Revised:	Drawing Name	Drawing Number	
1. 06/12/2015	FIRE HYDRANT	UW-06	
2. 01/25/2021 KL Mueller Super Centurion 250 FH Specification		Date: 06/01/2015	
3.		Drawn Checked	
4.		JH VR	

ENGINEERING AND BUILDING ENGINEERING DETAILS AND STANDARDS



- CITY OF CRYSTAL LAKE WATER MAIN CHLORINATION SPECIFICATIONS:**
- DISINFECTION OF WATER MAINS SHALL BE DONE IN ACCORDANCE WITH THE STATE OF ILLINOIS STANDARD SPECIFICATIONS FOR WATER AND SEWER MAIN CONSTRUCTION, CURRENT EDITION
 - THE CITY ENGINEERING DIVISION AND WATER DIVISION SHALL BE NOTIFIED 48 HOURS IN ADVANCE FOR SCHEDULING OF ANY TESTING, CHLORINATING, FLUSHING, OR SAMPLING.
 - ONLY CITY WATER DIVISION PERSONNEL MAY OPERATE WATER VALVES ON LIVE MAINS.
 - A WATER VALVE JUMPER IS REQUIRED TO MAINTAIN PRESSURE ON THE CHLORINATED LINES DURING THE SAMPLING PROCEDURE. FOR PROPER INSTALLATION AND REQUIREMENTS SEE THE STANDARD WATER VALVE JUMPER DETAIL UW-05.
 - WATER MAINS SHALL BE FLUSHED WITH A MINIMUM VELOCITY OF 2.5 FPS.
 - THE INITIAL CHLORINE CONCENTRATION SHALL BE 50 mg/L WITH A MINIMUM 24 HOUR RESIDUAL OF 25 mg/L.
 - THE METHOD OF CHLORINE APPLICATION SHALL BE APPROVED BY THE CITY:
 - LIQUID CHLORINE W/CHLORINATING DEVICE WITH BACKFLOW PREVENTER.
 - CHLORINE BEARING COMPOUNDS IN WATER.
 - TABLET DISINFECTION.
 - ALL NEW VALVES AND HYDRANTS SHALL BE OPERATED WHILE LINE IS BEING CHLORINATED.
 - THE CITY ENGINEERING DIVISION SHALL DETERMINE LOCATION AND QUANTITY OF CORPORATION STOPS FOR FLUSHING AND CHLORINATING. MAXIMUM SPACING BETWEEN SAMPLES SHALL BE 1,200 FEET. THE CHLORINE SOURCE AND ALL DEAD ENDS SHALL BE SAMPLED.
 - THE FINAL FLUSHING RESIDUAL IN THE NEW CHLORINATED LINES SHALL BE BETWEEN 0.2 AND 2.0 mg/L.
 - ALL WATER SAMPLES SHALL BE COLLECTED ON TWO (2) CONSECUTIVE DAYS AND PASS BACTERIOLOGICAL TEST RESULTS. IN THE EVENT THAT THE FIRST SET OF SAMPLES TAKEN TWO (2) CONSECUTIVE DAYS APART FAIL TO PASS, ANOTHER SET OF SAMPLES MAY BE TAKEN TWO (2) DAYS APART (PER STATE SPECS). IF THE SECOND SET FAILS TO PASS TESTING, THEN THE PROCEDURE MUST BE REPEATED WITH THE MAIN BEING RECHLORINATED, REFRESHED, AND RESAMPLED.
 - IF THE WATER MAIN FALLS BELOW 20 PSI AFTER CHLORINATION, THE LINE SHALL BE RESAMPLED ON TWO (2) CONSECUTIVE DAYS AND PASS BACTERIOLOGICAL TEST RESULTS.
 - STATE CERTIFIED LAB MUST BE USED FOR SAMPLES.

CHLORINE REQUIREMENTS TO PRODUCE 50 mg/L CONCENTRATION IN 100 FEET OF PIPE-BY DIAMETER

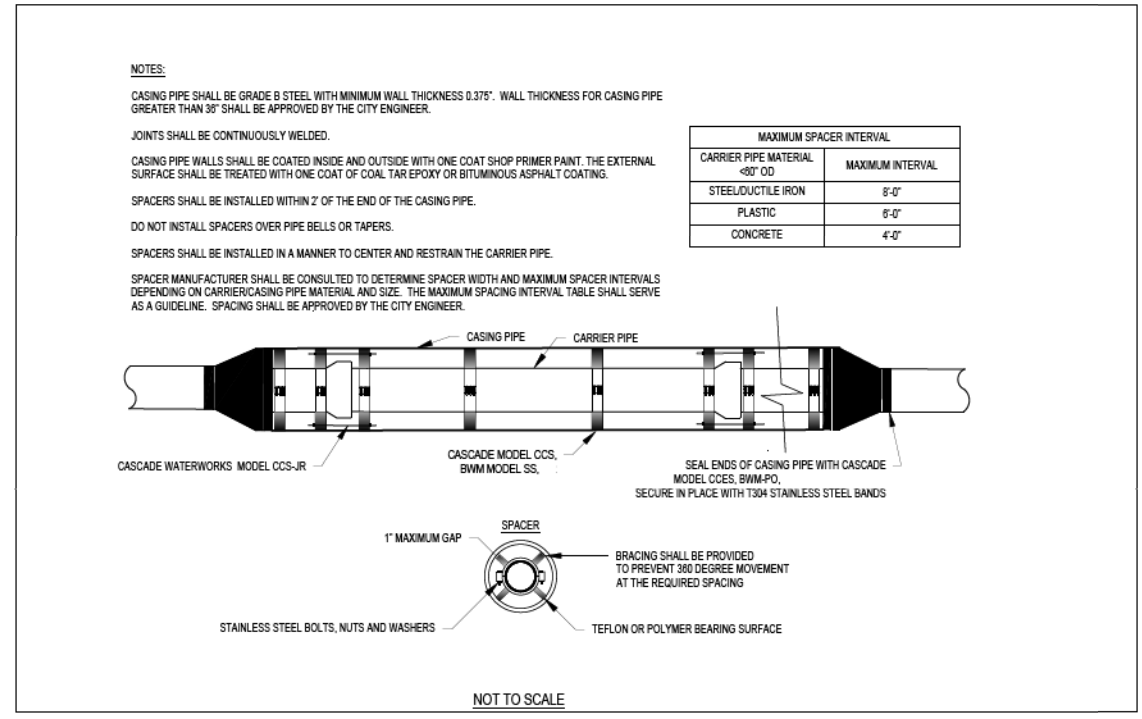
PIPE SIZE IN INCHES	100% CHLORINE LIQ.	% CHLORINE SOLUTION
4	0.027	0.23
6	0.061	0.73
8	0.108	1.38
10	0.170	2.04
12	0.240	2.88

NUMBER OF 5-GRain HYPOCHLORITE TABLETS REQUIRED FOR A DOSAGE OF 50mg/L PER LENGTH OF PIPE SECTION

PIPE SIZE IN INCHES	LENGTH OF PIPE SECTION IN FEET				
	UP TO 10	10	20	30	40
2	1	1	1	1	1
4	1	1	2	2	2
6	2	2	3	3	4
8	2	3	5	5	6
10	3	3	7	7	9
12	5	6	10	10	14

Revised:	Drawing Name	Drawing Number	
1. 06/12/2015	CHLORINATION SPECIFICATIONS	UW-08	
2. 4/30/2021 KL 20 PSI RESAMPLE, SAMPLING FREQUENCY		Date: 09/20/2012	
3.		Drawn Checked	
4.		DD VR	

ENGINEERING AND BUILDING ENGINEERING DETAILS AND STANDARDS



NOTES:

CASING PIPE SHALL BE GRADE B STEEL WITH MINIMUM WALL THICKNESS 0.375". WALL THICKNESS FOR CASING PIPE GREATER THAN 30" SHALL BE APPROVED BY THE CITY ENGINEER.

JOINTS SHALL BE CONTINUOUSLY WELDED.

CASING PIPE WALLS SHALL BE COATED INSIDE AND OUTSIDE WITH ONE COAT SHOP PRIMER PAINT. THE EXTERNAL SURFACE SHALL BE TREATED WITH ONE COAT OF COAL TAR EPOXY OR BITUMINOUS ASPHALT COATING.

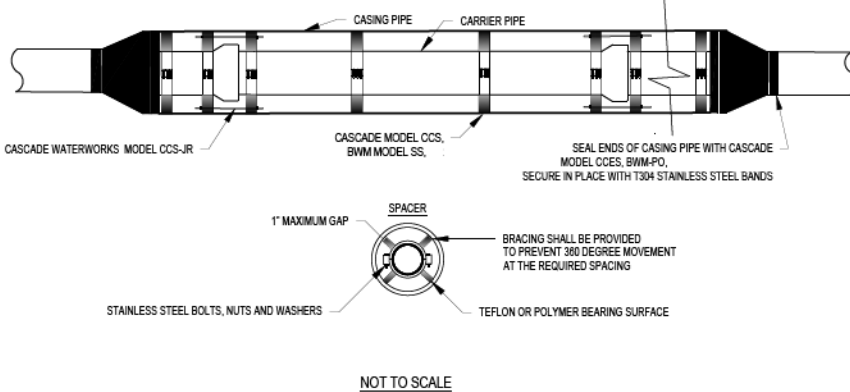
SPACERS SHALL BE INSTALLED WITHIN 2' OF THE END OF THE CASING PIPE.

DO NOT INSTALL SPACERS OVER PIPE BELLS OR TAPERS.

SPACERS SHALL BE INSTALLED IN A MANNER TO CENTER AND RESTRAIN THE CARRIER PIPE.

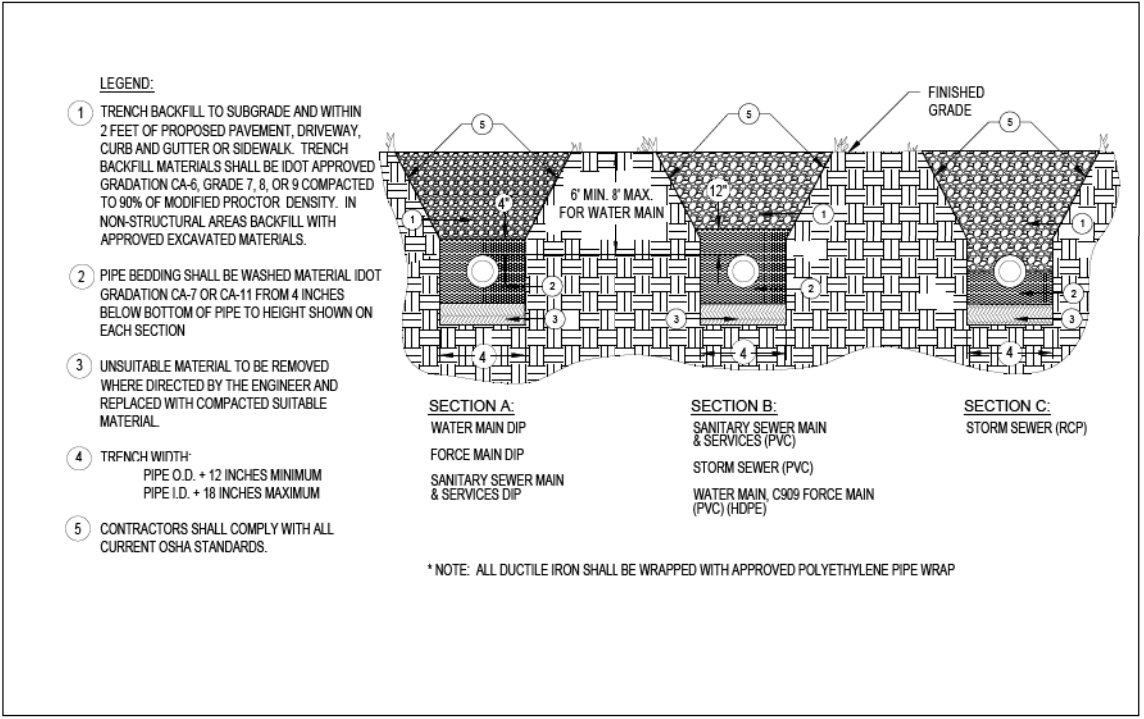
SPACER MANUFACTURER SHALL BE CONSULTED TO DETERMINE SPACER WIDTH AND MAXIMUM SPACER INTERVALS DEPENDING ON CARRIER/CASING PIPE MATERIAL AND SIZE. THE MAXIMUM SPACING INTERVAL TABLE SHALL SERVE AS A GUIDELINE. SPACING SHALL BE APPROVED BY THE CITY ENGINEER.

MAXIMUM SPACER INTERVAL	
CARRIER PIPE MATERIAL <30" OD	MAXIMUM INTERVAL
STEEL/DUCTILE IRON	8'-0"
PLASTIC	6'-0"
CONCRETE	4'-0"

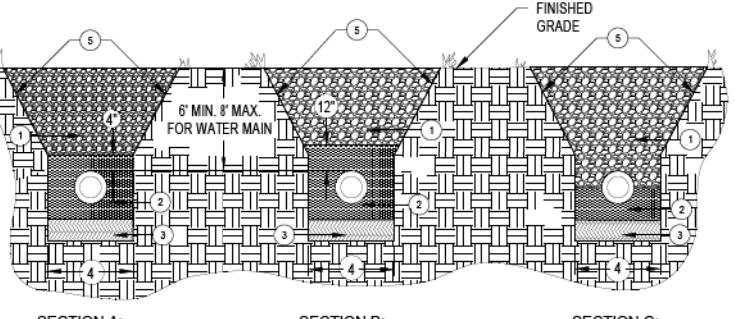


Revised:	Drawing Name	Drawing Number	
1.	CASING PIPE	UW-14	
2.		Date: 01-25-2021	
3.		Drawn Checked	
4.		KL PW	

ENGINEERING AND BUILDING ENGINEERING DETAILS AND STANDARDS



- LEGEND:**
- TRENCH BACKFILL TO SUBGRADE AND WITHIN 2 FEET OF PROPOSED PAVEMENT, DRIVEWAY, CURB AND GUTTER OR SIDEWALK. TRENCH BACKFILL MATERIALS SHALL BE IDOT APPROVED GRADATION CA-6, GRADE 7, 8, OR 9 COMPACTED TO 90% OF MODIFIED PROCTOR DENSITY. IN NON-STRUCTURAL AREAS BACKFILL WITH APPROVED EXCAVATED MATERIALS.
 - PIPE BEDDING SHALL BE WASHED MATERIAL IDOT GRADATION CA-7 OR CA-11 FROM 4 INCHES BELOW BOTTOM OF PIPE TO HEIGHT SHOWN ON EACH SECTION
 - UNSUITABLE MATERIAL TO BE REMOVED WHERE DIRECTED BY THE ENGINEER AND REPLACED WITH COMPACTED SUITABLE MATERIAL.
 - TRENCH WIDTH:
 - PIPE O.D. + 12 INCHES MINIMUM
 - PIPE I.D. + 18 INCHES MAXIMUM
 - CONTRACTORS SHALL COMPLY WITH ALL CURRENT OSHA STANDARDS.



* NOTE: ALL DUCTILE IRON SHALL BE WRAPPED WITH APPROVED POLYETHYLENE PIPE WRAP

Revised:	Drawing Name	Drawing Number	
1. 06/12/2015	TYPICAL TRENCH CROSS SECTION	UG-03	
2. 02/04/2021 KL CA-7 WASHED STONE		Date: 05/29/2015	
3.		Drawn Checked	
4.		JH AW	

ENGINEERING AND BUILDING ENGINEERING DETAILS AND STANDARDS

STATE OF ILLINOIS - PROFESSIONAL DESIGN FIRM LICENSE NO. - 184-001121 - EXPIRES 4/30/2022 morning 10/25/2021 11:56:02 AM



USER NAME = mornjg	DESIGNED - DJS	REVISED - ADDENDUM B 10/25/2021
PLOT SCALE = 80.0000' / in.	DRAWN - KAR	REVISED -
PLOT DATE = 10/25/2021	CHECKED - AKS	REVISED -
	DATE - 10-12-2021	FILE - 181171_ss2-sht-WM_Dets.dgn

STATE OF ILLINOIS DEPARTMENT OF TRANSPORTATION

SCALE: NONE		SHEET 2 OF 3 SHEETS		STA.	TO STA.
-------------	--	---------------------	--	------	---------

F.A.P. RTE.	SECTION	COUNTY	TOTAL SHEETS	SHEET NO.
335	15-00124-00-PV	MCHENRY	121	95
			CONTRACT NO. 61H27	
ILLINOIS FED. AID PROJECT				

