

STATE OF ILLINOIS
DEPARTMENT OF TRANSPORTATION

F.A. RTE.	SECTION	COUNTY	TOTAL SHEETS	SHEET NO.
VAR.	2021-152-TS	*	13	1
		ILLINOIS	CONTRACT NO. 62P66	

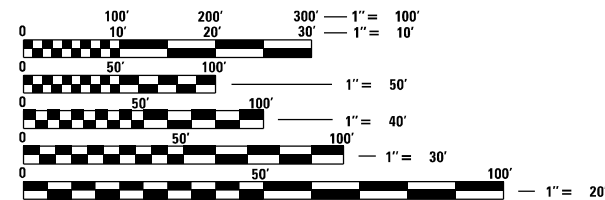
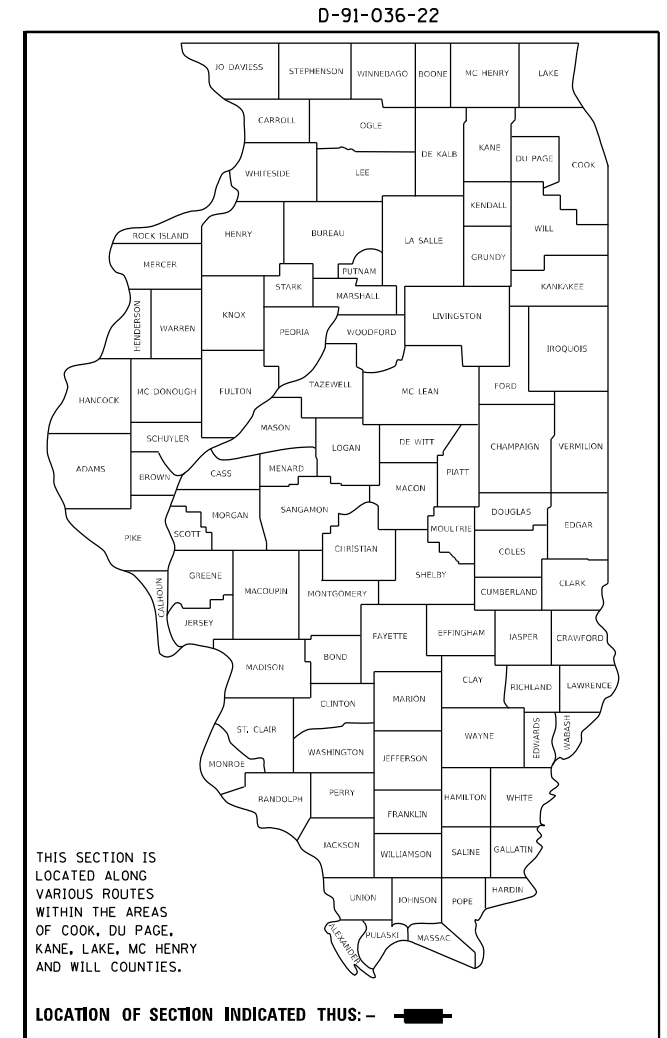
* COOK, DU PAGE, LAKE, KANE, McHENRY AND WILL

FOR INDEX OF SHEETS, SEE SHEET NO. 2

**PROPOSED
HIGHWAY PLANS**

ROUTE: VARIOUS DISTRICT ONE
SECTION: 2021-152-TS
TRAFFIC CONTROL

COUNTY: VARIOUS (COOK, DUPAGE, LAKE, KANE, McHENRY AND WILL)
C-91-027-22



FULL SIZE PLANS HAVE BEEN PREPARED USING STANDARD ENGINEERING SCALES. REDUCED SIZED PLANS WILL NOT CONFORM TO STANDARD SCALES. IN MAKING MEASUREMENTS ON REDUCED PLANS, THE ABOVE SCALES MAY BE USED.

J.U.L.I.E.
JOINT UTILITY LOCATION INFORMATION FOR EXCAVATION
1-800-892-0123
OR 811

PROJECT MANAGER: J. ALAIN MIDY (847) 221-3056

CONTRACT NO. 62P66

STATE OF ILLINOIS
DEPARTMENT OF TRANSPORTATION

SUBMITTED August 23 20 21
John Rios / ORB
REGIONAL ENGINEER

October 1 20 21
[Signature]
ENGINEER OF DESIGN AND ENVIRONMENT

October 21 21
[Signature]
DIRECTOR OF HIGHWAYS PROJECT IMPLEMENTATION

PRINTED BY THE AUTHORITY
OF THE STATE OF ILLINOIS

INDEX OF SHEETS

STATE STANDARDS

GENERAL NOTES

1. TITLE SHEET		
2. INDEX OF SHEETS , STATE STANDARDS AND GENERAL NOTES		
3 -4. SUMMARY OF QUANTITIES		
5. ENTRANCE RAMP AND CLOSURE DETAILS (TC-8)	701006-05	OFF-ROAD OPERATION 2L, 2W, 15' TO PAVEMENT EDGE FOR SPEEDS > 45 MPH
6. SINGLE LANE WEAVE (MODIFIED) (TC-9)	701011-04	OFF-ROAD MOVING OPERATION 2L, 2W, DAY ONLY
7. TRAFFIC CONTROL AND PROTECTION FOR SIDE ROADS, INTERSECTIONS AND DRIVEWAYS (MODIFIED) (TC-10)	701301-04	LANE CLOSURE, 2L 2W, SHORT TIME OPERATIONS
8. TRAFFIC CONTROL AND PROTECTION AT TURN BAYS (TO REMAIN OPEN TO TRAFFIC) (MODIFIED) (TC-14)	701400-10	APPROACH TO LANE CLOSURE, FREEWAY/EXPRESSWAY
9. TRAFFIC CONTROL FOR SHOULDER CLOSURES AND PARTIAL RAMP CLOSURES (MODIFIED) (TC-17)	701401-12	LANE CLOSURE, FREEWAY/EXPRESSWAY
10. DETOUR SIGNING FOR CLOSING STATE HIGHWAYS (TC-21)	701406-12	LANE CLOSURE, FREEWAY/EXPRESSWAY, DAY OPERATION ONLY
11. ARTERIAL ROAD INFORMATION SIGN (TC-22)	701411-09	LANE CLOSURE, MULTILANE AT ENTERANCE/EXIT RAMP FOR SPEEDS ≥ 45 MPH
12. TRAFFIC CONTROL DETAILS FOR FREEWAY CENTER LANE CLOSURE, SHOULDER LANE (TC-25)	701422-10	LANE CLOSURE, MULTILANE FOR SPEEDS ≥ 45 MPH TO 55 MPH
13. DRIVEWAY ENTRANCE SIGNING (TC-26)	701431-13	LANE CLOSURE, MULTILANE, UNDIVIDED WITH CROSSOVER FOR SPEEDS ≥ 45 MPH TO 55 MPH
	701446-11	TWO LANE CLOSURE, FREEWAY/EXPRESSWAY
	701502-09	URBAN LANE CLOSURE, 2L, 2W WITH BIDIRECTIONAL LEFT TURN LANE
	701601-09	URBAN LANE CLOSURE, MULTI-LANE, 1W OR 2W WITH NON-TRAVERSABLE MEDIAN
	701602-10	URBAN LANE CLOSURE, MULTI-LANE, 2W WITH BIDIRECTIONAL LEFT TURN LANE
	701606-10	URBAN LANE CLOSURE, MULTI-LANE, 2W WITH MOUNTABLE MEDIAN
	701701-10	URBAN LANE CLOSURE, INTERSECTION
	701801-06	LANE CLOSURE, MULTILANE, 1W OR 2W, CROSSWALK OR SIDEWALK CLOSURE
	701901-08	TRAFFIC CONTROL DEVICES

THE CONTRACTOR SHALL BE REQUIRED TO PROVIDE ACCESS TO ABUTTING PROPERTY AT ALL TIMES DURING CONSTRUCTION OF THIS PROJECT.

THE "ARTERIAL ROAD INFORMATION SIGN (TC-22)" IS APPLICABLE ONLY TO ARTERIAL ROADS AND SHALL NOT BE APPLIED TO EXPRESSWAYS.

MODEL: Default
 FILE: Main: P:\u10000000\paw_bentley.com\PROJECTS\Documents\DOT Offices\District 1\Project\Design\CADD\Drawings\Traffic_Maint.dgn

USER NAME = midyja	DESIGNED -	REVISED -	STATE OF ILLINOIS DEPARTMENT OF TRANSPORTATION	INDEX OF SHEETS, STATE STANDARDS & GENERAL NOTES	F.A. RTE.	SECTION	COUNTY	TOTAL SHEETS	SHEET NO.
DRAWN -	REVISED -	VAR.			2021-152-TS	VARIOUS	13	2	
PLOT SCALE = 100.0000' / in.	CHECKED -	REVISED -			CONTRACT NO. 62P66				
PLOT DATE = 8/20/2021	DATE -	REVISED -			ILLINOIS FED. AID PROJECT				
				SCALE:	SHEET	OF	SHEETS	STA.	TO STA.

SUMMARY OF QUANTITIES			URBAN TOTAL QUANTITIES	100% STATE 0021	CONSTRUCTION TYPE CODE				
CODE NO	ITEM	UNIT							
70100205	TRAFFIC CONTROL AND PROTECTION, STANDARD 701401	EACH	200	200					
70100315	TRAFFIC CONTROL AND PROTECTION, STANDARD 701422	EACH	10	10					
70100350	TRAFFIC CONTROL AND PROTECTION, STANDARD 701101	EACH	5	5					
70100400	TRAFFIC CONTROL AND PROTECTION, STANDARD 701431	EACH	5	5					
70100420	TRAFFIC CONTROL AND PROTECTION, STANDARD 701411	EACH	15	15					
70100430	TRAFFIC CONTROL AND PROTECTION, STANDARD 701446	EACH	80	80					
70100701	TRAFFIC CONTROL AND PROTECTION, STANDARD 701406	EACH	10	10					
70102624	TRAFFIC CONTROL AND PROTECTION, STANDARD 701502	EACH	5	5					
70102626	TRAFFIC CONTROL AND PROTECTION, STANDARD 701606	EACH	5	5					
70102631	TRAFFIC CONTROL AND PROTECTION, STANDARD 701601	EACH	10	10					

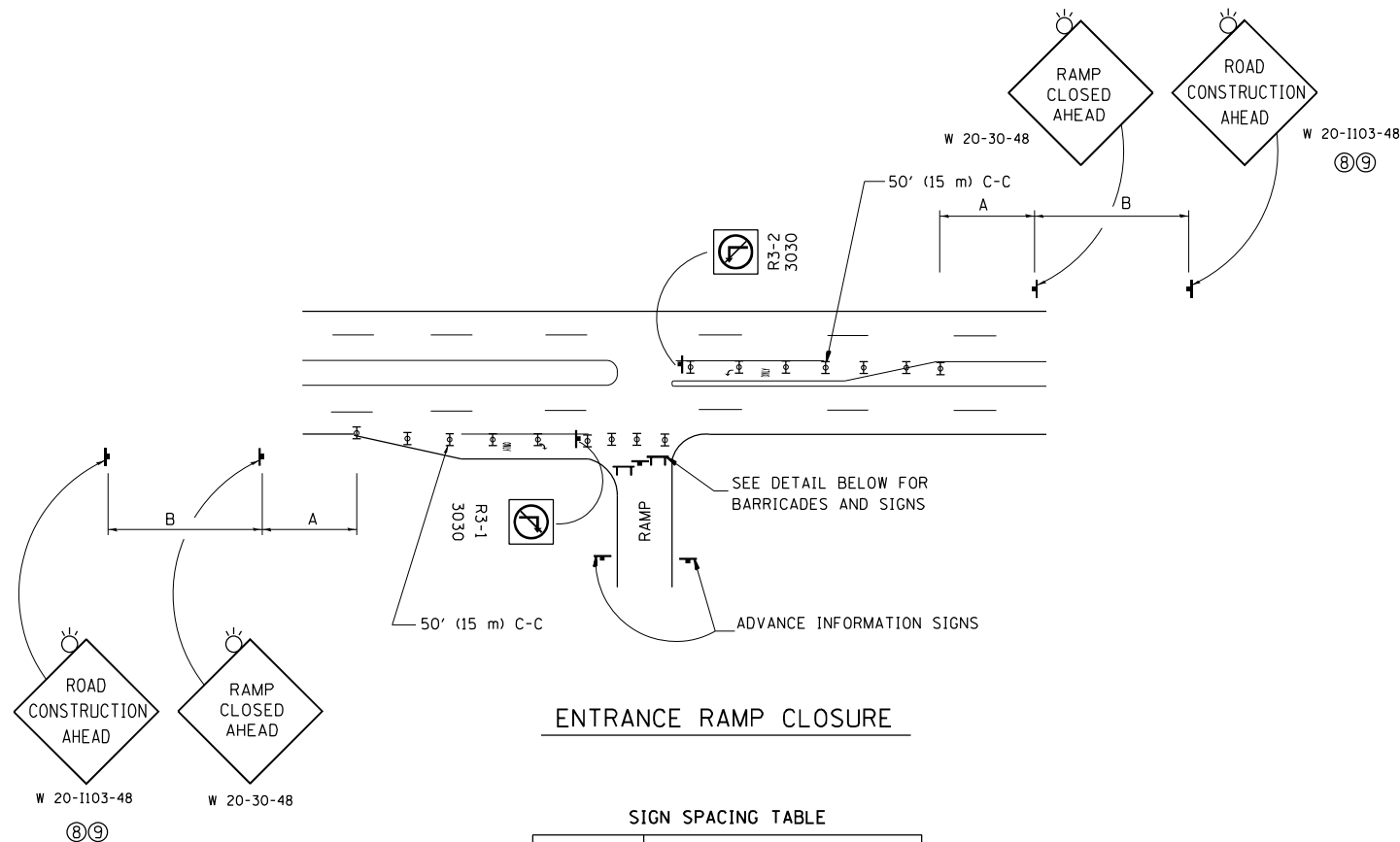
SUMMARY OF QUANTITIES			URBAN TOTAL QUANTITIES	100% STATE 0021	CONSTRUCTION TYPE CODE				
CODE NO	ITEM	UNIT							
70102633	TRAFFIC CONTROL AND PROTECTION, STANDARD 701602	EACH	5	5					
70102637	TRAFFIC CONTROL AND PROTECTION, STANDARD 701701	EACH	5	5					
70102642	TRAFFIC CONTROL AND PROTECTION, STANDARD 701801	EACH	5	5					
X0320581	DRUMS	EACH	1000	1000					
X0320582	BARRICADES, TYPE I	EACH	500	500					
X0320583	BARRICADES, TYPE II	EACH	100	100					
X0320584	DIRECTIONAL INDICATOR BARRICADES	EACH	100	100					
X0320585	VERTICAL BARRICADES	EACH	100	100					
X0320586	FLEXIBLE DELINEATORS	EACH	100	100					
X7010237	CHANGEABLE MESSAGE SIGN, SPECIAL	CAL DA	30	30					
X7010808	TRAFFIC CONTROL AND PROTECTION, STANDARD TC8	EACH	150	150					
X7010809	TRAFFIC CONTROL AND PROTECTION, STANDARD TC9	EACH	25	25					
X7010810	TRAFFIC CONTROL AND PROTECTION, STANDARD TC10	EACH	5	5					

FILE NAME =	USER NAME = mlayja	DESIGNED -	REVISED -
pw\N\dot-pw\benfrey.com\PI\DOT\Documents\DOT - Office\District\Projects\Design\CADD\Design\Traffic_Maintenance\DRAWN		DRAWN -	REVISED -
	PLOT SCALE = 100,0000' / 1in	CHECKED -	REVISED -
	PLOT DATE = 8/20/2021	DATE -	REVISED -

**STATE OF ILLINOIS
DEPARTMENT OF TRANSPORTATION**

TRAFFIC CONTROL SUMMARY OF QUANTITIES			
SCALE:	SHEET NO.	OF SHEETS	STA. TO STA.

F.A. RTE.	SECTION	COUNTY	TOTAL SHEETS	SHEET NO.
VAR.	2021-152-TS	VARIOUS	13	3
CONTRACT NO. 62P66				
FED. ROAD DIST. NO. 1 ILLINOIS FED. AID PROJECT				

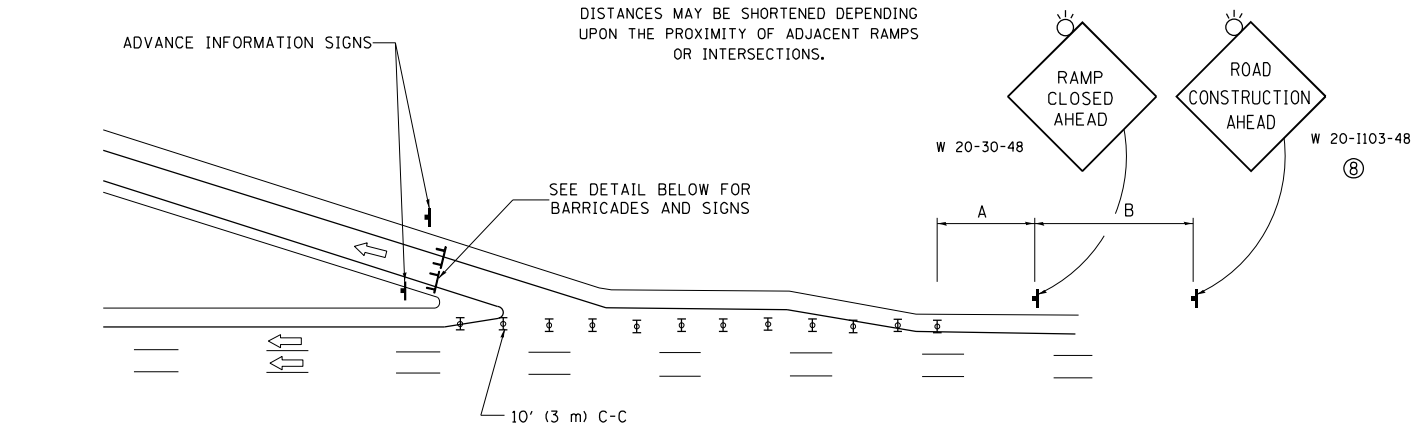


ENTRANCE RAMP CLOSURE

SIGN SPACING TABLE

FACILITY	DISTANCE BETWEEN SIGNS	
	A	B
EXPRESSWAY >24 HOURS	1000' (300 m)	1500' (450 m)
EXPRESSWAY <24 HOURS	500' (150 m)	500' (150 m)
ARTERIAL 55 MPH	500' (150 m)	500' (150 m)
ARTERIAL 50-45 MPH	350' (100 m)	350' (100 m)
ARTERIAL <45 MPH	200' (60 m)	200' (60 m)

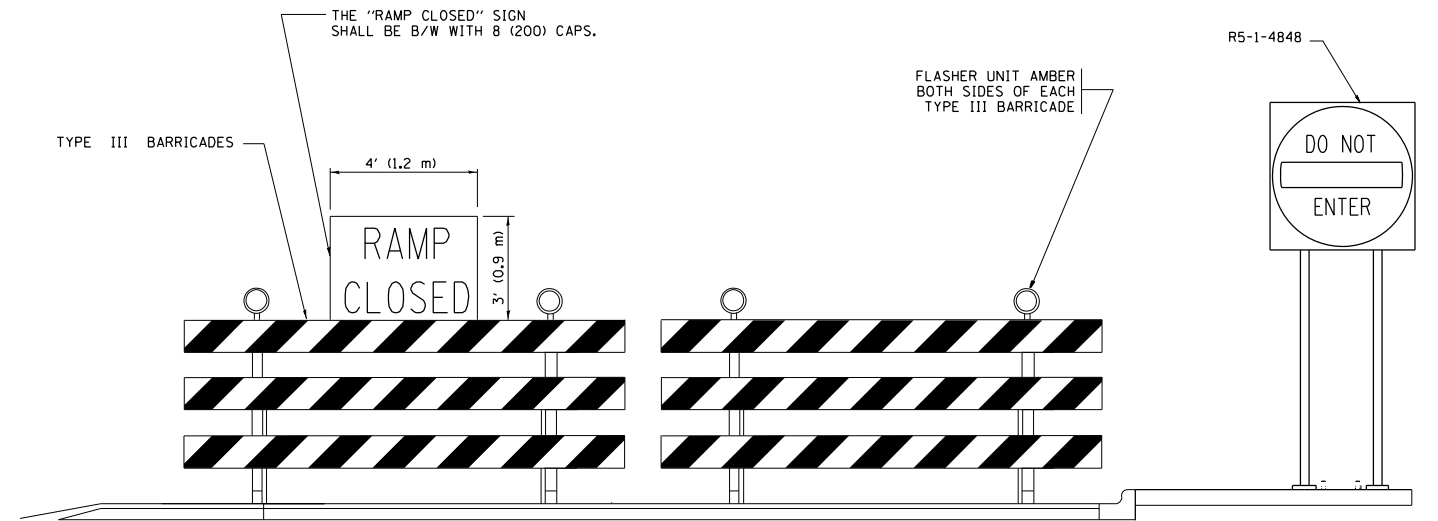
DISTANCES MAY BE SHORTENED DEPENDING UPON THE PROXIMITY OF ADJACENT RAMPS OR INTERSECTIONS.



EXIT RAMP CLOSURE

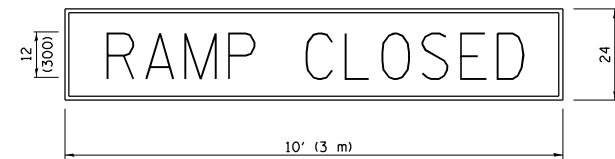
SYMBOLS

- ⊥ TYPE II BARRICADE OR DRUM
- ⊥ TYPE III BARRICADE WITH 2 FLASHING LIGHTS



DETAIL FOR REQUIRED BARRICADES & SIGNS

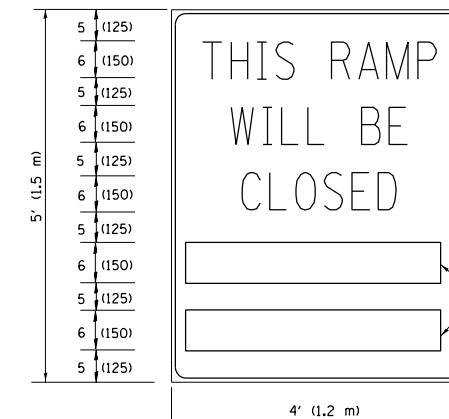
RAMP CLOSURE ADVANCE WARNING SIGN



BLACK LEGEND ON ORANGE BACKGROUND MOUNTED DIAGONALLY
E MOD FONT
1 (25) BORDER

THESE SIGNS ARE REQUIRED ON ALL THE EXIT GUIDE SIGNS FOR EXIT RAMPS THAT WILL BE CLOSED FOR MORE THAN FOUR (4) CONSECUTIVE DAYS.

RAMP CLOSURE ADVANCE INFORMATION SIGN



BLACK LEGEND ON WHITE BACKGROUND
1/2 (12) BORDER
E MOD FONT

THESE BLANK AREAS SHALL BE FILLED WITH THE DATES AND THE TIME THAT THE RAMP WILL BE CLOSED.

THESE SIGNS ARE REQUIRED ON BOTH SIDES OF THE RAMP, MINIMUM OF 1 WEEK IN ADVANCE OF THE CLOSURE.

THESE SIGNS SHALL BE FABRICATED AND PAID FOR ACCORDING TO THE TEMPORARY INFORMATION SIGNING SPECIAL PROVISION

GENERAL NOTES:

- ① CONES MAY BE SUBSTITUTED FOR DRUMS OR TYPE II BARRICADES DURING DAY OPERATIONS. CONES SHALL BE A MINIMUM OF 28 (700) HIGH.
- ② VERTICAL BARRICADES SHALL NOT BE USED FOR RAMP CLOSURES.
- ③ A FLAGGER SHALL BE POSITIONED AT EACH CLOSED RAMP THAT IS OPEN TO CONSTRUCTION VEHICLES, PRECEDED BY A W20-7 FLAGGER WARNING SIGN.
- ④ ALL ROUTE MARKERS AND TRAILBLAZER ASSEMBLIES WHICH DIRECT MOTORISTS TO A CLOSED ENTRANCE RAMP SHALL BE COVERED WHEN THE RAMP IS CLOSED FOR MORE THAN FOUR (4) DAYS.
- ⑤ THE SIGNING AND BARRICADING WHICH IS REQUIRED BY THIS DETAIL SHALL BE INCLUDED IN THE COST OF TRAFFIC CONTROL AND PROTECTION (EXPRESSWAYS).
- ⑥ AUTHORIZATION FROM THE DISTRICT'S BUREAU OF TRAFFIC IS REQUIRED FOR ALL RAMP CLOSURES.
- ⑦ THE RAMP CLOSURE ADVANCE INFORMATION SIGNS SHALL BE ERECTED IF THE CLOSURE TIME EXCEEDS TWENTY-FOUR (24) HOURS. ADDITIONAL ADVANCE WARNING SIGNS ON EXIT GUIDE SIGNING WILL BE REQUIRED FOR EXIT RAMP CLOSURES THAT EXCEED FOUR (4) DAYS IN LENGTH.
- ⑧ ROAD CONSTRUCTION AHEAD SIGNS MAY BE OMITTED WHEN THIS DETAIL IS USED IN CONJUNCTION WITH OTHER TRAFFIC CONTROL THAT ALREADY INCLUDES A ROAD CONSTRUCTION AHEAD SIGN.
- ⑨ ARTERIAL ROAD CONSTRUCTION AHEAD SIGNS SHALL BE INSTALLED ON THE LEFT SIDE OF TRAFFIC IF THE MEDIAN IS MORE THAN 10 FT WIDE.

ALL DIMENSIONS ARE IN INCHES (MILLIMETERS) UNLESS OTHERWISE SHOWN.

FILE NAME =	USER NAME = midyja	DESIGNED - D.W.S.	REVISED - S.P.B. 01-07
pw:\idot-pw\bentley.com\PWIDOT\Documents\IDOT Offices\District 1\Projects\Design\CAD\Drawings\Traffic_Maint.dgn		CHECKED -	REVISED - S.P.B. 12-09
Default	PLOT SCALE = 100.0000' / in.	DATE - 02-83	REVISED - M.D. 06-13
	PLOT DATE = 8/20/2021		REVISED - M.D. 01-18

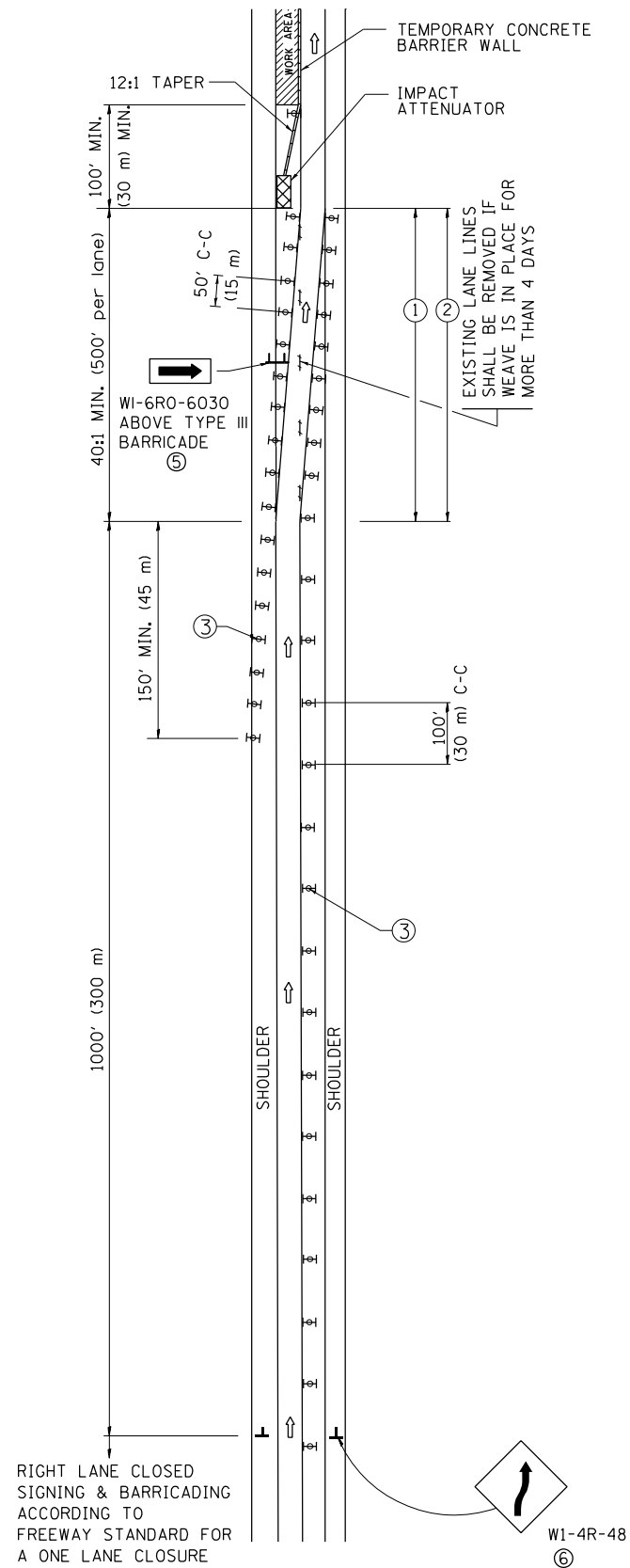
**STATE OF ILLINOIS
DEPARTMENT OF TRANSPORTATION**

**ENTRANCE AND EXIT RAMP
CLOSURE DETAILS**

SCALE: NONE SHEET 1 OF 1 SHEETS STA. TO STA.

F.A. RTE.	SECTION	COUNTY	TOTAL SHEETS	SHEET NO.
VAR.	2021-152-TS	VARIOUS	13	5
TC-08		CONTRACT NO. 62P66		
ILLINOIS FED. AID PROJECT				

SINGLE LANE WEAVE



SYMBOLS

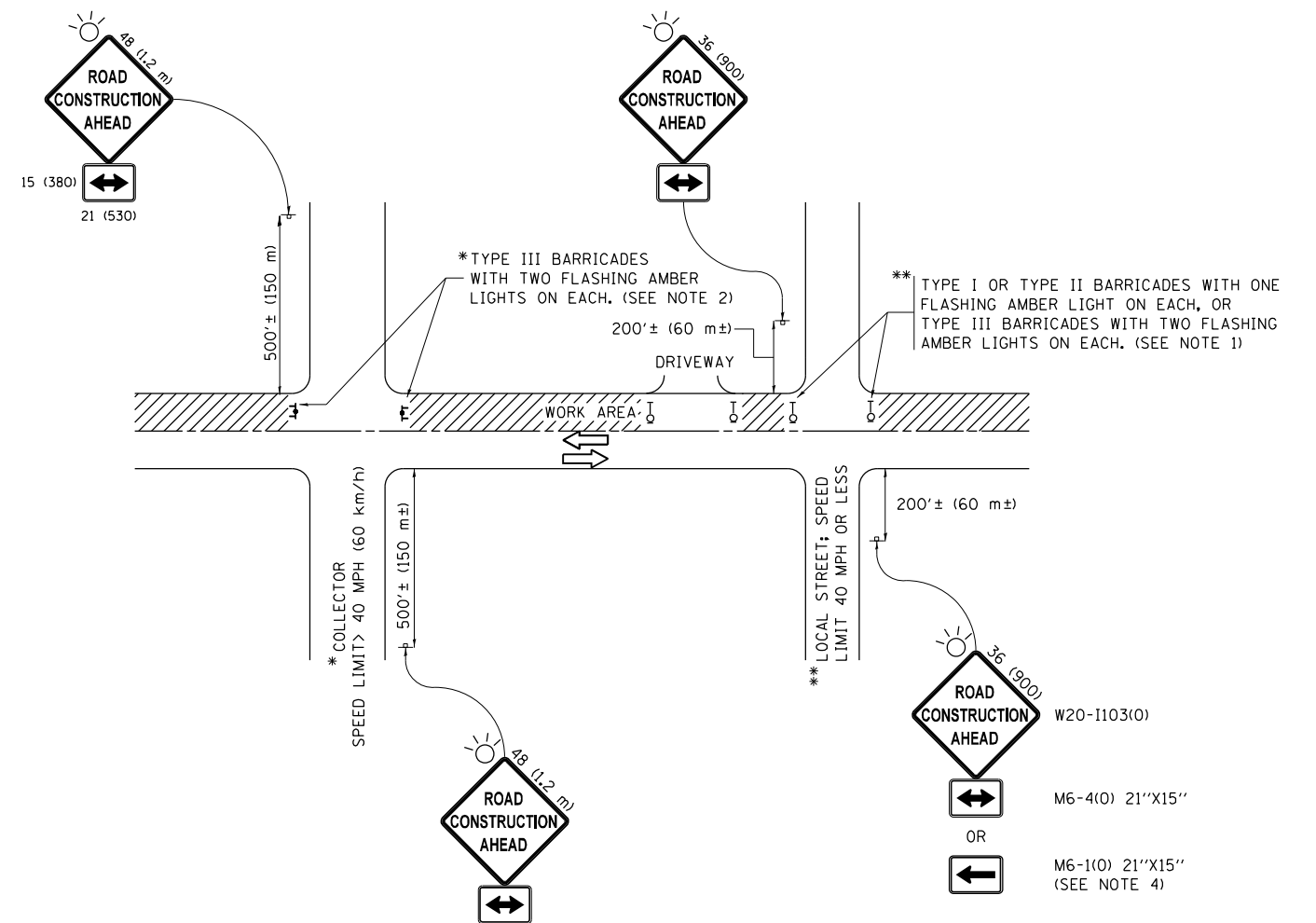
- DIRECTION OF TRAFFIC
- WORK AREA
- SIGN ON PORTABLE OR PERMANENT SUPPORT
- TYPE II BARRICADE OR DRUM WITH MONO-DIRECTIONAL STEADY BURNING LIGHT
- TEMPORARY CONCRETE BARRIER WALL
- IMPACT ATTENUATOR

GENERAL NOTES

- ① EXISTING CONFLICTING PAVEMENT MARKING LINES SHALL BE REMOVED. PAVEMENT MARKING REMOVAL SHALL NOT BE REQUIRED FOR SINGLE LANE WEAVES UNDER 4 DAYS IN DURATION.
- ② CONTINUOUS REFLECTIVE TEMPORARY PAVEMENT MARKING TAPE SHALL BE PLACED THROUGHOUT THE TAPER AND FOR 300' (90 m) ALONG SIDE THE WORK AREA WHERE THE CLOSURE TIME IS GREATER THAN FOURTEEN DAYS. THE LEFT EDGE LINE SHALL BE YELLOW AND THE RIGHT EDGE LINE SHALL BE WHITE. FOR MULTI-LANE WEAVES LANE LINES SHALL BE 5 INCH, 10'-30' (3 m-9 m) SKIP DASH, WHITE.
- ③ PLASTIC DRUMS WITH STEADY BURN LIGHTS AT 50' (15 m) C-C SPACING IN TAPERS AND 100' (30 m) C-C SPACING IN TANGENTS.
- ④ ALL SIGNS SHALL BE POST MOUNTED IF THE CLOSURE TIME EXCEEDS FOUR DAYS.
- ⑤ TYPE III BARRICADES MAY BE OMITTED FOR SINGLE-LANE WEAVES UNDER 24-HOURS IN DURATION. W1-6 SIGNS WILL STILL BE REQUIRED. IF THE WIDTH OF OFFSET IS LESS THAN 6' THEN THE TYPE III BARRICADE WITH ATTACHED ARROW SIGN PANEL CAN BE ELIMINATED IN THE TAPER AREAS.
- ⑥ WHEN THE LENGTH OF THE SHIFTED SEGMENT (DISTANCE BETWEEN WEAVE POINTS) IS LESS THAN 1500', DOUBLE REVERSE CURVE SIGNS (W24-1) SHOULD BE USED INSTEAD OF THE REVERSE CURVE (W1-4) SIGNS. ARROWS ON THE 4'X8' "ALL TRAFFIC" SIGNS SHALL BE THE SAME SHAPE.
- ⑦ THE NUMBER OF ARROWS ON THESE SIGNS SHALL MATCH THE NUMBER OF LANES OPEN TO TRAFFIC.

ALL DIMENSIONS ARE IN INCHES (MILLIMETERS) UNLESS OTHERWISE SHOWN

FILE NAME =	USER NAME = midjje	DESIGNED - DWS	REVISED - JAF 02-06	STATE OF ILLINOIS DEPARTMENT OF TRANSPORTATION	TRAFFIC CONTROL DETAILS FOR FREEWAY SINGLE & MULTI-LANE WEAVE (MODIFIED)			F.A. RTE.	SECTION	COUNTY	TOTAL SHEETS	SHEET NO.
pw:\idot-pw\entley.com\PIDOT\Documents\IDOT Offices\District 1\Projects\Design\CAD\Drawings\Traffic_Maint.dgn		REVISION	REVISED - SPB 01-07		VAR.	2021-152-TS	VARIOUS	13	6			
PLOT SCALE = 100.0000' / 1in.	CHECKED -	REVISED - SPB 12-09			TC-09		CONTRACT NO. 62P66					
PLOT DATE = 8/20/2021	DATE - 02-87	REVISED - MD 06-13	SCALE: NONE		SHEET NO. 1 OF 1 SHEETS	STA. TO STA.	FED. ROAD DIST. NO. 1 ILLINOIS FED. AID PROJECT					



NOTES:

1. SIDE ROAD WITH A SPEED LIMIT OF 40 MPH (60 km/h) OR LESS AS SHOWN ON THE DRAWING AND AS DIRECTED BY THE ENGINEER:
 - a) ONE "ROAD CONSTRUCTION AHEAD" SIGN 36 x 36 (900x900) WITH A FLASHER MOUNTED ON IT APPROXIMATELY 200' (60 m) IN ADVANCE OF THE MAIN ROUTE.
 - b) THE CLOSED PORTION OF THE MAIN ROUTE SHALL BE PROTECTED BY BLOCKING WITH TYPE I, TYPE II OR TYPE III BARRICADES, 1/3 OF THE CROSS SECTION OF THE CLOSED PORTION.
2. SIDE ROAD WITH A SPEED LIMIT GREATER THAN 40 MPH (60 km/h) AS SHOWN ON THE DRAWING AND AS DIRECTED BY THE ENGINEER:
 - a) ONE "ROAD CONSTRUCTION AHEAD" SIGN 48 x 48 (1.2 m x 1.2 m) WITH A FLASHER MOUNTED ON IT APPROXIMATELY 500' (150 m) IN ADVANCE OF THE MAIN ROUTE.
 - b) THE CLOSED PORTION OF THE MAIN ROUTE SHALL BE PROTECTED BY BLOCKING WITH TYPE III BARRICADES, 1/2 OF THE CROSS SECTION OF THE CLOSED PORTION.
3. CONES MAY BE SUBSTITUTED FOR BARRICADES OR DRUMS AT HALF THE SPACING DURING DAY OPERATIONS. CONES SHALL BE A MINIMUM OF 28 (710) IN HEIGHT.
4. WHEN THE SIDE ROAD LIES BETWEEN THE BEGINNING OF THE MAINLINE SIGNING AND THE WORK ZONE, A SINGLE HEADED ARROW (M6-1) SHALL BE USED IN LIEU OF THE DOUBLE HEADED ARROW (M6-4).
5. WHEN WORK IS BEING PERFORMED ON A SIDE ROAD OR DRIVEWAY, FOLLOW THE APPLICABLE STANDARD(S). THE DIRECTIONAL ARROW (M6-1 OR M6-4) SHALL BE COVERED OR REMOVED WHEN NO LONGER CONSISTENT WITH THE TRAFFIC CONTROL SET-UP.
6. ADVANCE WARNING SIGNS ARE TO BE OMITTED ON DRIVEWAYS UNLESS OTHERWISE SPECIFIED.

All dimensions are in inches (millimeters) unless otherwise shown.

FILE NAME =	USER NAME = midyja	DESIGNED - L.H.A.	REVISED - A. HOUSEH 10-15-96
pw:\idot-pw.bentley.com\PWIDOT\Documents\IDOT Offices\District 1\Projects\Design\CAD\DRAWING\Traffic_Maint.dgn			REVISED - T. RAMMACHER 01-06-00
Default	PLOT SCALE = 100.0000' / in.	CHECKED -	REVISED - A. SCHUETZE 07-01-13
	PLOT DATE = 8/20/2021	DATE - 06-89	REVISED - A. SCHUETZE 09-15-16

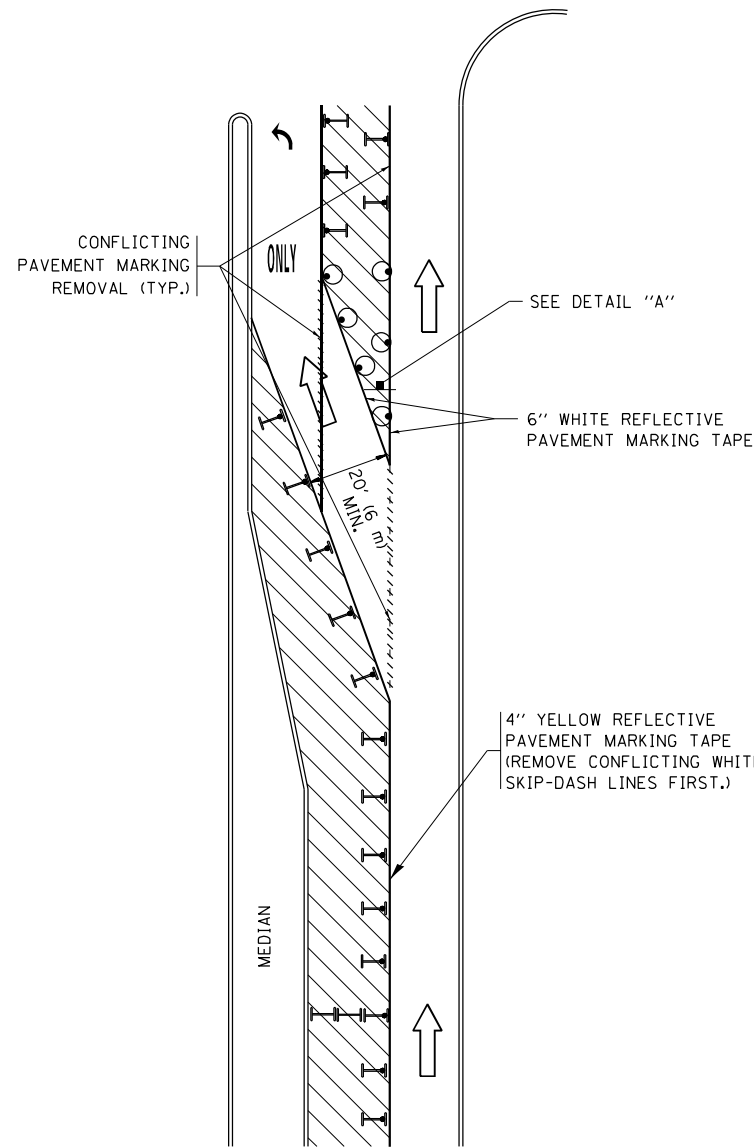
**STATE OF ILLINOIS
DEPARTMENT OF TRANSPORTATION**

**TRAFFIC CONTROL AND PROTECTION FOR
SIDE ROADS, INTERSECTIONS, AND DRIVEWAYS (MODIFIED)**

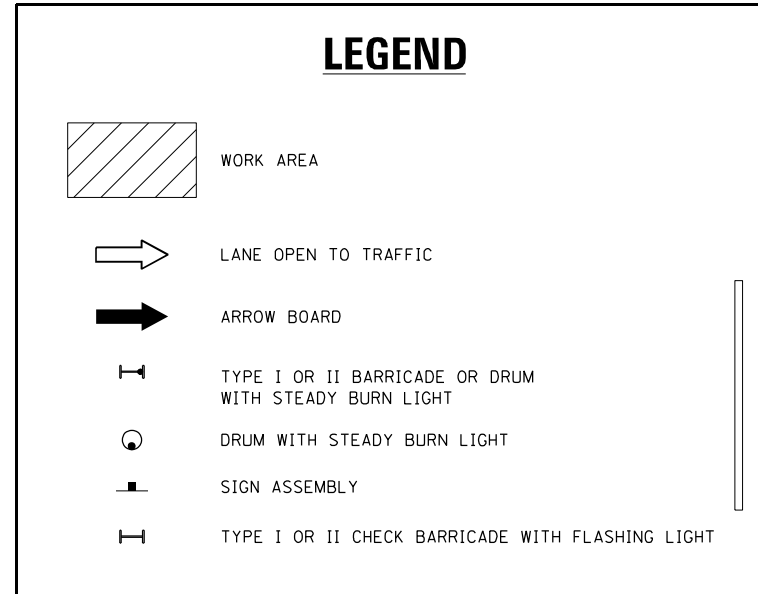
SCALE: NONE SHEET 1 OF 1 SHEETS STA. TO STA.

F.A. RTE.	SECTION	COUNTY	TOTAL SHEETS	SHEET NO.
VAR.	2021-152-TS	VARIOUS	13	7
TC-10			CONTRACT NO. 62P66	
ILLINOIS FED. AID PROJECT				

TURN BAY ENTRANCE WITHIN A LANE CLOSURE

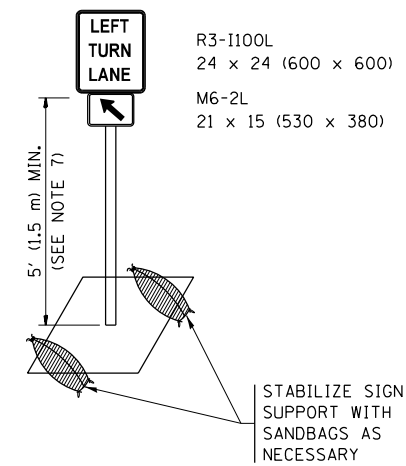


FIGURE



NOTES:

1. A) WHEN "L" IS \leq THE STORAGE LENGTH OF THE TURN LANE (AS SHOWN IN FIG. 1), USE FIGURE 1.
B) WHEN "L" IS $>$ THE STORAGE LENGTH OF THE TURN LANE OR THE TURN LANE IS WITHIN THE LANE CLOSURE, USE FIGURE 2.
2. CONES MAY BE SUBSTITUTED FOR BARRICADES OR DRUMS AT HALF THE SPACING DURING DAY OPERATIONS. CONES SHALL BE A MINIMUM OF 28 (710) IN HEIGHT.
3. LIGHTS WILL NOT BE REQUIRED ON BARRICADES OR DRUMS FOR DAY OPERATIONS. ALL LIGHTS SHALL BE MONODIRECTIONAL.
4. REFLECTIVE TEMPORARY PAVEMENT MARKINGS SHALL BE PLACED THROUGHOUT THE BARRICADED AREAS OF EACH TURN BAY AS SHOWN WHERE THE CLOSURE TIME IS GREATER THAN FOURTEEN (14) DAYS.
5. THIS APPLICATION ALSO APPLIES WHEN WORK IS BEING PERFORMED IN THE RIGHT LANE(S) AND THE RIGHT TURN BAY IS TO REMAIN OPEN. UNDER THIS CONDITION, "RIGHT TURN LANE" R3-1100R 24 x 24 (600 x 600) AND M6-2R 21 x 15 (530 x 380) SHALL BE USED.
6. THESE CONTROLS SHALL SUPPLEMENT MAINLINE TRAFFIC CONTROL FOR LANE CLOSURES.
7. THE SIGNS SHALL BE MOUNTED ABOVE THE BARRICADES/DRUMS ON SEPARATE SIGN SUPPORTS THAT MEET NCHRP 350 OR MASH PREQUIREMENTS.
8. TRAFFIC CONTROL AND PROTECTION AT TURN BAYS (TO REMAIN OPEN TO TRAFFIC) SHALL BE INCLUDED IN THE COST OF SPECIFIED TRAFFIC CONTROL STANDARDS OR ITEMS.

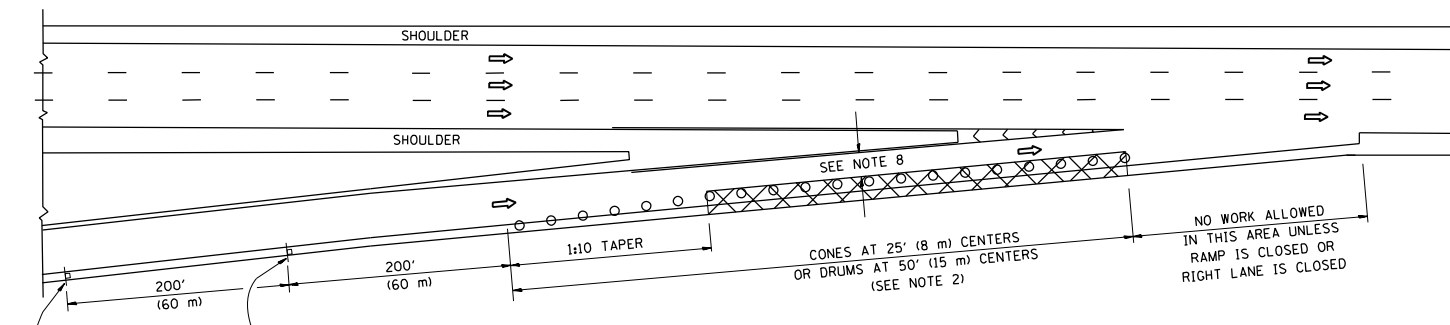


DETAIL A

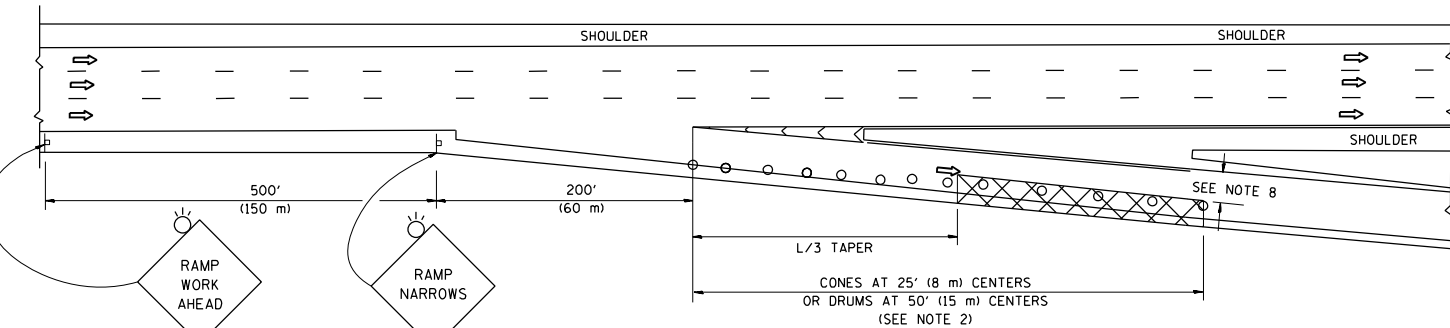
All dimensions are in inches (millimeters) unless otherwise shown.

FILE NAME =	USER NAME = midyja	REVISED - T. RAMMACHER 09-08-94	REVISED - R. BORO 09-14-09	STATE OF ILLINOIS DEPARTMENT OF TRANSPORTATION	TRAFFIC CONTROL AND PROTECTION AT TURN BAYS (TO REMAIN OPEN TO TRAFFIC) (MODIFIED)	F.A. RTE.	SECTION	COUNTY	TOTAL SHEETS	SHEET NO.
pw:\idot-pw\bentley.com\PWIDOT\Documents\IDOT Offices\District 1\Projects\Design\CAD\REVISED - Traffic\HOUSEH 11-07-95	REVISED - A. SCHUETZE 07-01-13	REVISED - A. HOUSEH 10-12-96	REVISED - A. SCHUETZE 09-15-16			VAR.	2021-152-TS	VARIOUS	13	8
Default	PLOT SCALE = 100.0000' / in.	REVISED - T. RAMMACHER 01-06-00	REVISED -			TC-14		CONTRACT NO. 62P66		ILLINOIS FED. AID PROJECT
					SCALE: NONE	SHEET 1 OF 1 SHEETS		STA. TO STA.		

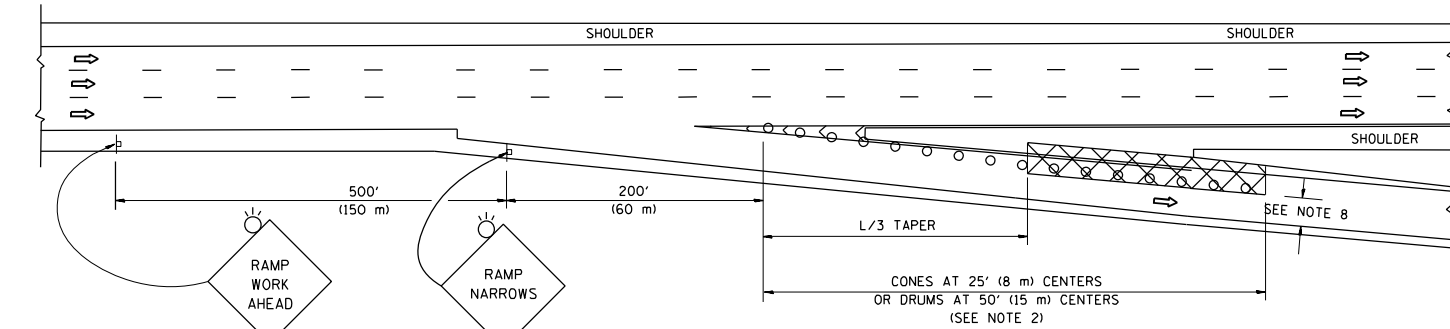
PARTIAL RAMP CLOSURE DETAILS



TYPICAL ENTRANCE RAMP



TYPICAL EXIT RAMP



TYPICAL EXIT RAMP

SYMBOLS

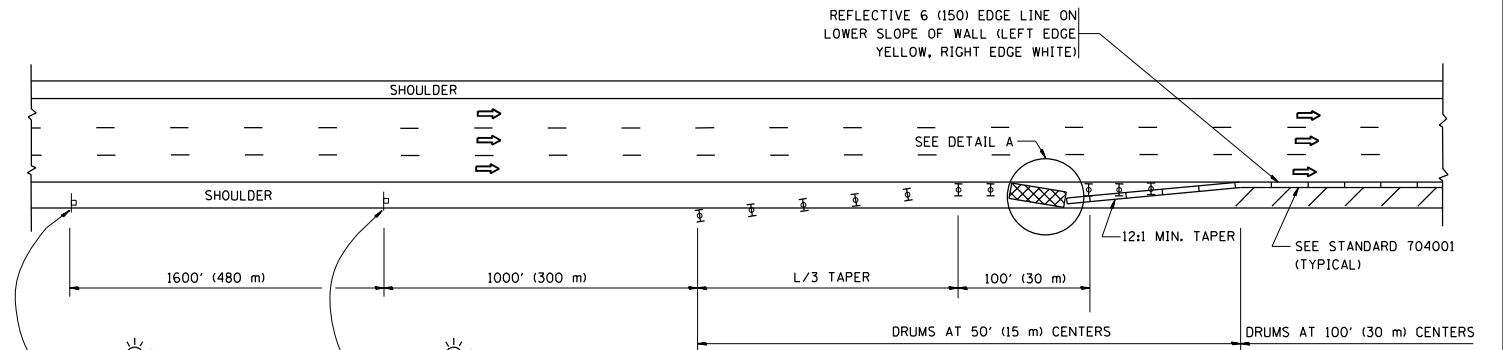
- ACTIVE WORK AREA
- SIGN ON PORTABLE OR PERMANENT SUPPORT
- FLAGGER WITH CONTROL SIGN
- TYPE II BARRICADE OR DRUM
- CONE, DRUM OR BARRICADE
- IMPACT ATTENUATOR OF TYPE AND TEST LEVEL SPECIFIED

GENERAL NOTES

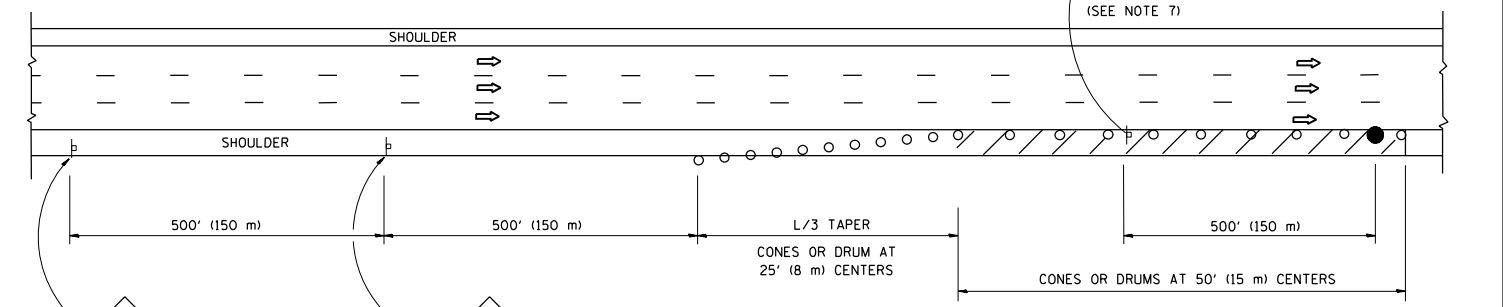
1. THE "L" DISTANCE EQUALS:

SPEED LIMIT	FORMULAS
45 mph (80 km/h) OR GREATER:	METRIC ENGLISH L=0.65(W)(S) L=(W)(S)
W = WIDTH OF OFFSET IN FEET (METERS) S = NORMAL POSTED SPEED MPH (KM/H)	
2. PLASTIC DRUMS WITH HIGH PERFORMANCE REFLECTIVE SHEETING ARE REQUIRED FOR ALL NIGHTIME CLOSURES.
3. ALL SIGNS SHALL BE POST MOUNTED IF THE CLOSURE TIME EXCEEDS FOUR DAYS.
4. FLASHING LIGHTS SHALL BE USED DURING THE HOURS OF DARKNESS AND SHALL BE INSTALLED ABOVE THE FIRST TWO SETS OF SIGNS.
5. THE IMPACT ATTENUATOR, TEMPORARY IS NOT REQUIRED WHEN THE TEMPORARY CONCRETE BARRIER WALL IS PROTECTED BY OR IS TIED INTO THE EXISTING GUARDRAIL. IF OFFSET IS LESS THAN 5 FEET USE NARROW USE TYPE DEVICE TO MEET NCHRP350/MASH.
6. AUTHORIZATION FROM THE DISTRICT'S BUREAU OF TRAFFIC IS REQUIRED FOR ALL FREEWAY CLOSURES.
7. THE FLAGGER AND FLAGGER SIGN ARE REQUIRED AT THE ABOVE WORK SITES WHEN:
 - a. FOUR OR MORE WORK VEHICLES ENTER THE TRAFFIC LANES IN A ONE HOUR PERIOD.
 - b. THE WORK AVTIVITY REQUIRES FREQUENT ENCROACHMENT INTO THE LANE OPEN TO TRAFFIC.
 THE FLAGGER SHALL BE STATIONED APPROXIMATELY 100' (30 m) TO 200' (60 m) IN ADVANCE OF THE WORKERS.
8. 12' MIN. WIDTH TANGENT SECTION
16' MIN. WIDTH CURVE SECTION.

SHOULDER CLOSURE DETAILS



PERMANENT SHOULDER CLOSURE






DAYTIME SHOULDER CLOSURE

THIS DETAIL IS USED WHERE:
1. VEHICLES, EQUIPMENT, WORKERS OR THEIR ACTIVITIES ENCROACH IN AN AREA CLOSER THAN 15' (4.5 m) TO THE EDGE OF PAVEMENT FOR A PERIOD IN EXCESS OF 15 MINUTES.



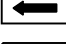


ALL DIMENSIONS ARE IN INCHES (MILLIMETERS) UNLESS OTHERWISE SHOWN.

FILE NAME =	USER NAME = midjja	DESIGNED -	REVISED - S.P.B. 01-07	STATE OF ILLINOIS DEPARTMENT OF TRANSPORTATION	TRAFFIC CONTROL DETAILS FOR FREEWAY SHOULDER CLOSURES AND PARTIAL RAMP CLOSURES (MODIFIED)	F.A. RTE.	SECTION	COUNTY	TOTAL SHEETS	SHEET NO.	
			REVISED - S.P.B. 12-09			VAR.	2021-152-TS	VARIOUS	13	9	
		CHECKED -	REVISED - M.D. 06-13			TC-17		CONTRACT NO. 62P66			
		DATE - 11-96	REVISED - M.D. 01-18			SCALE: NONE	SHEET 1	OF 1 SHEETS	STA.	TO STA.	ILLINOIS FED. AID PROJECT

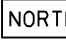

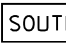
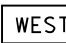
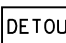
ROUTE MARKERS

-  FOR U.S. ROUTES
M1-40-2424
-  FOR ILLINOIS ROUTES
M1-50-2424
-  R.R., UNMARKED ROUTES
SPECIAL 24" x 18" VARIABLE
4" BLACK LETTERS ON WHITE
REFLECTIVE BACKGROUND

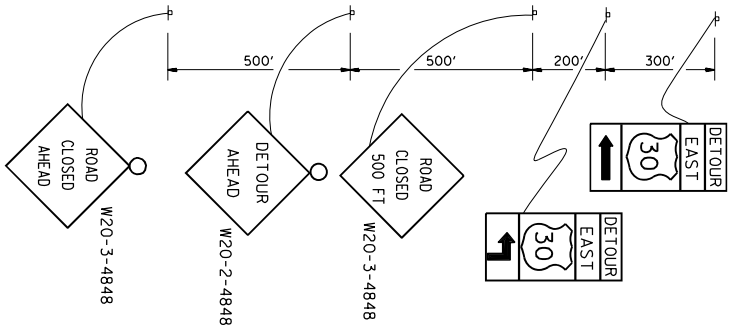
ARROWS SIGNS

-  M5-1L-2115
-  M5-1R-2115
-  M6-1-2115
-  M6-1-2115
-  M6-3-2115

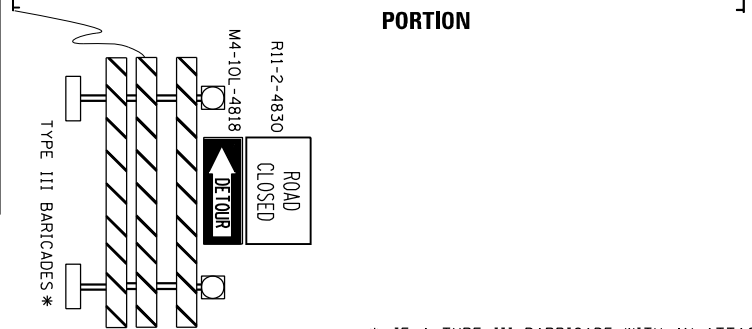
CARDINAL DIRECTION & DETOUR SIGNS

-  NORTH M3-1-2412
-  EAST M3-2-2412
-  SOUTH M3-3-2412
-  WEST M3-4-2412
-  DETOUR M4-8-2412

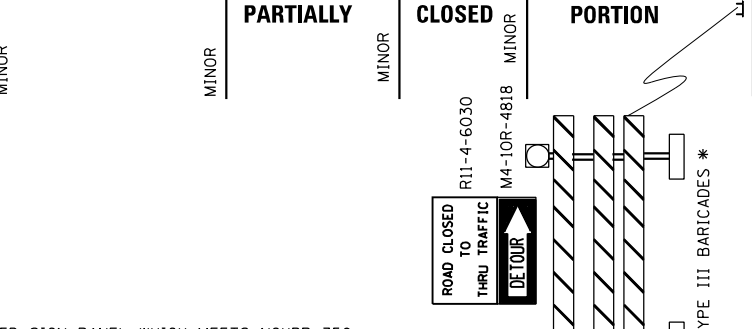
STATE ROUTE



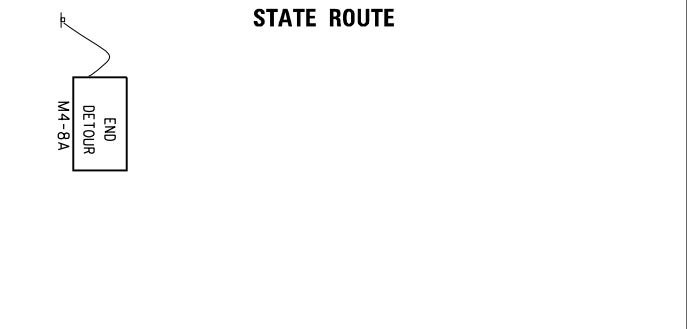
COMPLETELY CLOSED PORTION



PARTIALLY CLOSED PORTION



STATE ROUTE



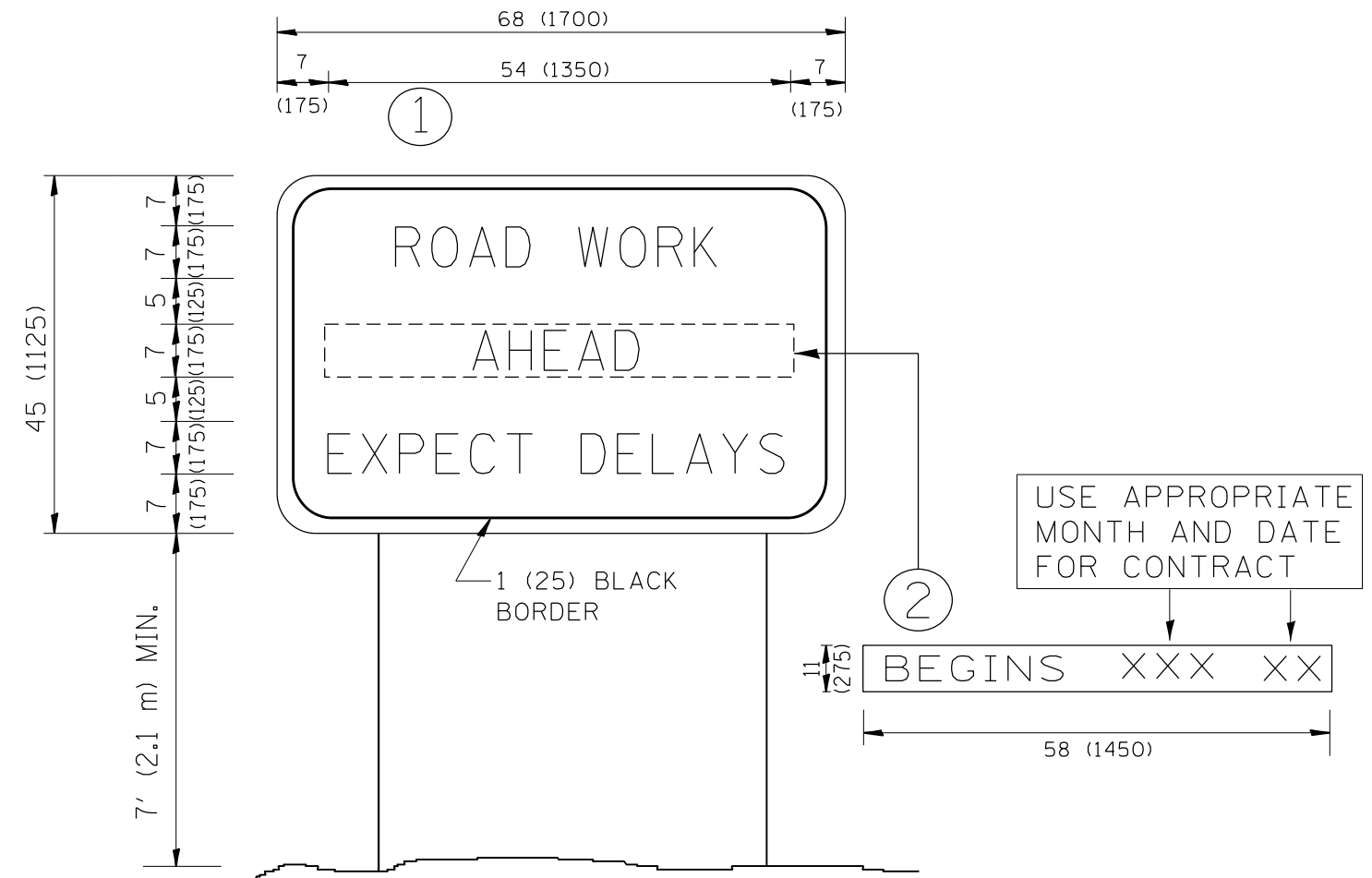
* IF A TYPE III BARRICADE WITH AN ATTACHED SIGN PANEL WHICH MEETS NCHRP 350 REQUIREMENTS IS NOT AVAILABLE, THE SIGNS SHALL BE MOUNTED, ABOVE THE BARRICADES, ON SEPARATE SIGNS SUPPORTS THAT MEET NCHRP 350 REQUIREMENTS.

FILE NAME =	USER NAME = midyja	DESIGNED -	REVISED - 10-18-02
pw:\idot-pw\bentley.com\PIDOT\Documents\IDOT Offices\District 1\Projects\Design\CAD\Drawings\Traffic\Maint.dgn		CHECKED -	REVISED - R. BORO 09-14-09
		DATE -	REVISED -
			REVISED -

**STATE OF ILLINOIS
DEPARTMENT OF TRANSPORTATION**

DETOUR SIGNING FOR CLOSING STATE HIGHWAYS			
SCALE: NONE	SHEET NO. 1 OF 1 SHEETS	STA.	TO STA.

F.A. R.E.	SECTION	COUNTY	TOTAL SHEETS	SHEET NO.
VAR.	2021-152-TS	VARIOUS	13	10
TC-21		CONTRACT NO.	62P66	
FED. ROAD DIST. NO. 1 ILLINOIS FED. AID PROJECT				



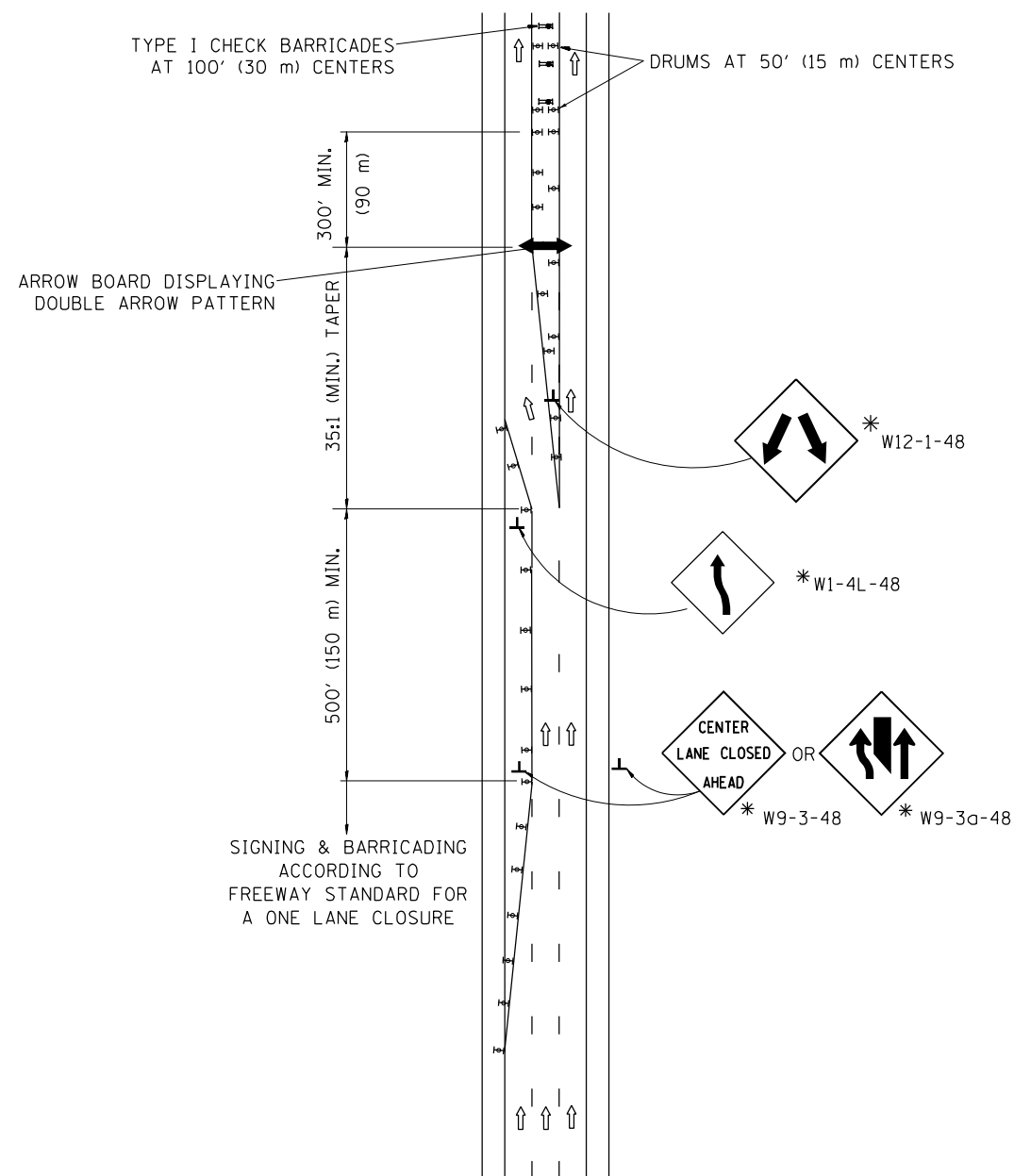
NOTES:

1. USE BLACK LETTERING ON ORANGE BACKGROUND.
2. ERECT SIGNS IN ADVANCE OF THE LOCATION FOR THE "ROAD CONSTRUCTION AHEAD" SIGN AT LOCATIONS AS DIRECTED BY THE ENGINEER.
3. ERECT SIGN ① WITH INSTALLED PANEL ② ONE WEEK PRIOR TO THE START OF CONSTRUCTION.
4. REMOVE PANEL ② SOON AFTER THE START OF CONSTRUCTION.
5. SEE SPECIAL PROVISION FOR "TEMPORARY INFORMATION SIGNING" FOR ADDITIONAL INFORMATION.
6. ONE SIGN ASSEMBLY EQUALS 25.70 SQ. FT. (2.3 SQ. M.)
7. SHALL BE PAID FOR AS TEMPORARY INFORMATION SIGNING.

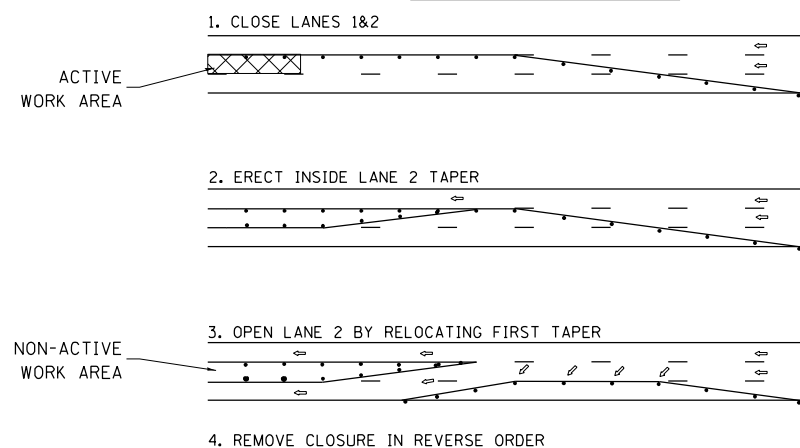
ALL DIMENSIONS ARE IN INCHES (MILLIMETERS) UNLESS OTHERWISE SHOWN.

FILE NAME =	USER NAME = midyja	DESIGNED -	REVISED - R. MIRS 09-15-97	STATE OF ILLINOIS DEPARTMENT OF TRANSPORTATION	ARTERIAL ROAD INFORMATION SIGN	F.A. RTE.	SECTION	COUNTY	TOTAL SHEETS	SHEET NO.	
pw:\idot-pw.bentley.com\PWIDOT\Documents\IDOT Offices\District 1\Projects\Design\CAD\DRAWING\Traffic_Maint.dgn	DRAWN	REVISOR	REVISOR			VAR.	2021-152-TS	VARIOUS	13	11	
PLOT SCALE = 100.0000' / 1in.	CHECKED -	REVISOR - T. RAMMACHER 02-02-99	REVISOR -			TC-22		CONTRACT NO. 62P66			
PLOT DATE = 8/20/2021	DATE -	REVISOR - C. JUCIUS 01-31-07	REVISOR -			FED. ROAD DIST. NO. 1 ILLINOIS FED. AID PROJECT					
				SCALE: NONE		SHEET NO. 1 OF 1 SHEETS		STA.		TO STA.	

CENTER LANE CLOSURE



INSTALLATION SEQUENCE

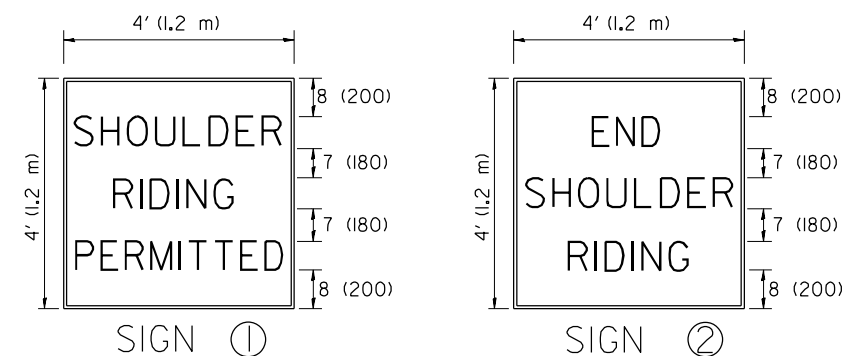
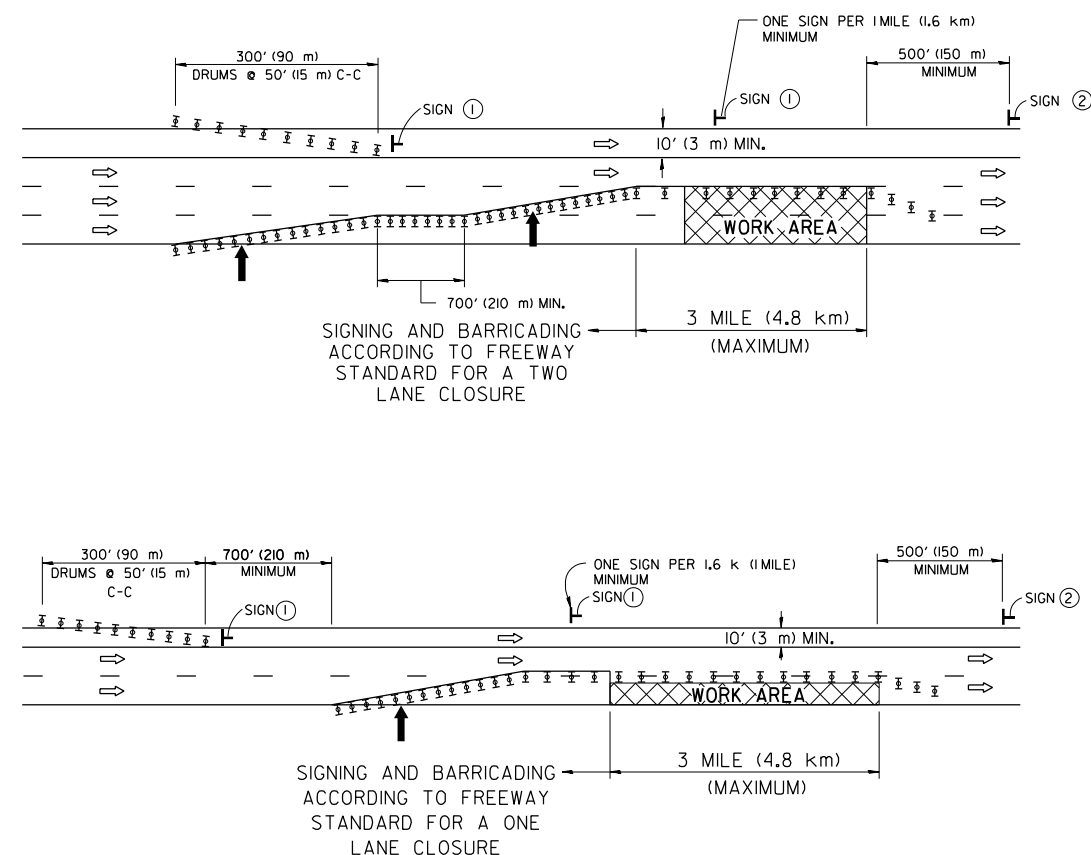


NOTES

1. DRUMS WITH STEADY BURN LIGHTS SHALL BE USED AT 50' (15 m) CENTERS ON ALL TAPERS AND TANGENTS IN ADVANCE OF WORK AREA.
2. CLOSURE SHALL BE USED ONLY FOR OPERATIONS LASTING 72 HOURS OR LESS.
3. CENTER LANE CLOSURE CONFIGURATION IS NOT TO BE USED WITH WORKERS PRESENT.

SHOULDER LANE

NOTE: CLOSURE SHALL BE USED ONLY FOR OPERATIONS LASTING 72 HOURS OR LESS.



6 (150) SERIES "C" LEGEND
BLACK LEGEND
WHITE REFLECT. BACKGROUND
1(25) BORDER

SYMBOLS

- ↑ DIRECTION OF TRAFFIC
- ➔ ARROWBOARD
- ▣ ACTIVE WORK AREA
- ⊥ SIGN ON PORTABLE OR PERMANENT SUPPORT *
- ⊥ TYPE II BARRICADE, OR DRUM WITH MONO-DIRECTIONAL STEADY BURN LIGHT

ALL DIMENSIONS ARE IN INCHES (MILLIMETERS) UNLESS OTHERWISE SHOWN

* ALL SIGNS SHALL BE MOUNTED AT A MINIMUM HEIGHT OF 5' (1.5 m).

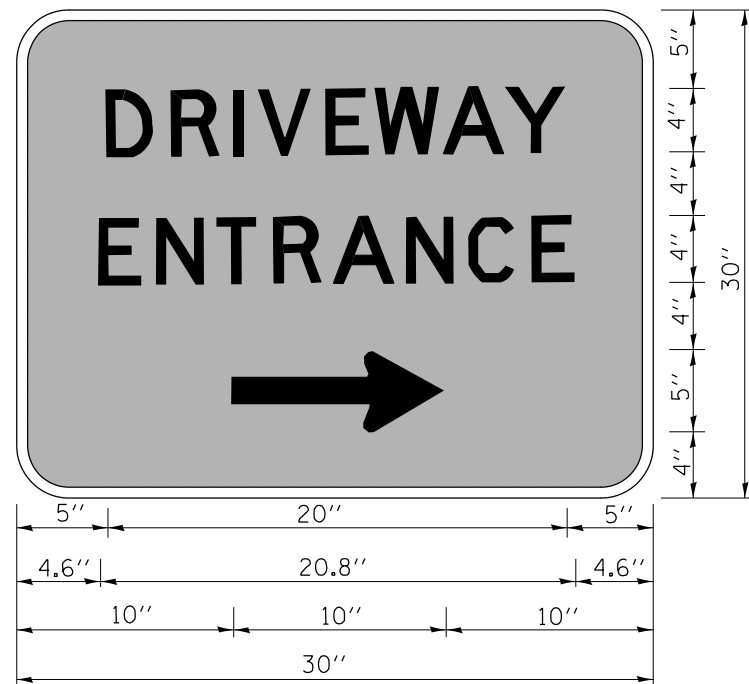
FILE NAME =	USER NAME = midyja	DESIGNED -	REVISED - J.A.F. 04-03
pw:\idot-pw\bentley.com\PWIDOT\Documents\IDOT Offices\District 1\Projects\Design\CAD\DRAWING\Traffic_Maint.dgn	PROJECT =	CHECKED -	REVISED - S.P.B. 01-07
	PLOT SCALE = 100.0000' / in.	DATE -	REVISED - S.P.B. 12-09
	PLOT DATE = 8/20/2021		REVISED -

STATE OF ILLINOIS
DEPARTMENT OF TRANSPORTATION

TRAFFIC CONTROL DETAILS FOR FREEWAY
CENTER LANE CLOSURE SHOULDER LANE

SCALE: NONE SHEET NO. 1 OF 1 SHEETS STA. TO STA.

F.A. RTE.	SECTION	COUNTY	TOTAL SHEETS	SHEET NO.
VAR.	2021-152-TS	VARIOUS	13	12
TC-25		CONTRACT NO. 62P66		
FED. ROAD DIST. NO. 1 ILLINOIS FED. AID PROJECT				



3.0" RADIUS, 0.5" BORDER, WHITE ON GREEN; REFLECTORIZED
 "DRIVEWAY" D; "ENTRANCE" D; STANDARD ARROW CUSTOM 12.0" x 5.0"

NOTES:

1. HALF OF THE SIGNS WILL REQUIRE A LEFT HAND FACING ARROW.
2. TWO SIGNS SHALL BE USED AT EACH COMMERCIAL ENTRANCE
 PLACED BACK-TO-BACK; ONE WITH A RIGHT HAND ARROW (SHOWN)
 SHALL BE PLACED ON THE NEAR RIGHT SIDE THE DRIVEWAY
 AND ONE WITH A LEFT HAND ARROW SHALL BE PLACED ON THE
 FAR LEFT SIDE OF THE DRIVEWAY.
3. SIGNS TO BE PAID FOR AS ITEM "TEMPORARY INFORMATION SIGNING".

FILE NAME =	USER NAME = midyja	DESIGNED -	REVISED - C. JUCIUS 02-15-07
pw:\idot-pw.bentley.com\PWIDOT\Documents\IDOT Offices\District 1\Projects\Design\CAD\DRAWING\Traffic_Maint.dgn		CHECKED -	REVISED -
	PLOT SCALE = 100.0000' / 1in.	DATE -	REVISED -
	PLOT DATE = 8/20/2021		

**STATE OF ILLINOIS
 DEPARTMENT OF TRANSPORTATION**

DRIVEWAY ENTRANCE SIGNING

SCALE: NONE SHEET NO. 1 OF 1 SHEETS STA. TO STA.

F.A. RTE.	SECTION	COUNTY	TOTAL SHEETS	SHEET NO.
VAR.	2021-152-TS	VARIOUS	13	13
TC-26			CONTRACT NO. 62P66	
FED. ROAD DIST. NO. 1 ILLINOIS FED. AID PROJECT				