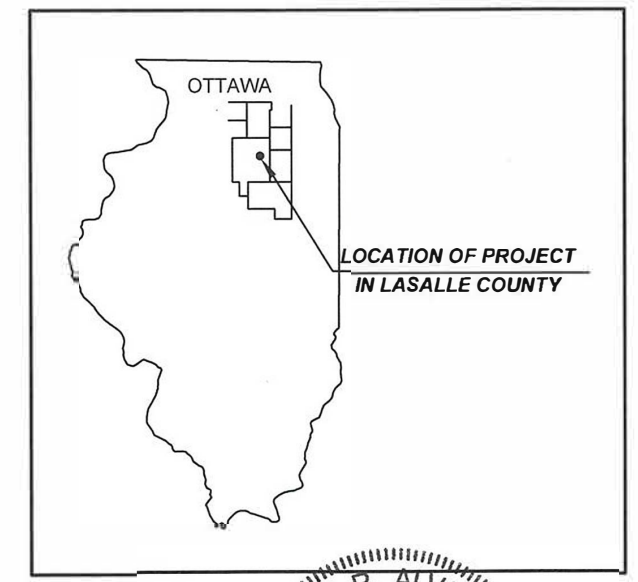


F.A.U. RTE.	SECTION	ILLINOIS PROJECT	CONTRACT NO.	COUNTY	TOTAL SHEETS	SHEET NO.
1277	19-00054-00-PV	MWW2(187)	87752	LASALLE	12	1

11-05-2021 LETTING ITEM 102

STATE OF ILLINOIS  
DEPARTMENT OF TRANSPORTATION  
**PLANS FOR**  
**SURFACE TRANSPORTATION URBAN PROGRAM**  
**CITY OF MARSEILLES - COMMERCIAL, BROADWAY & MAIN STREETS**  
LASALLE COUNTY



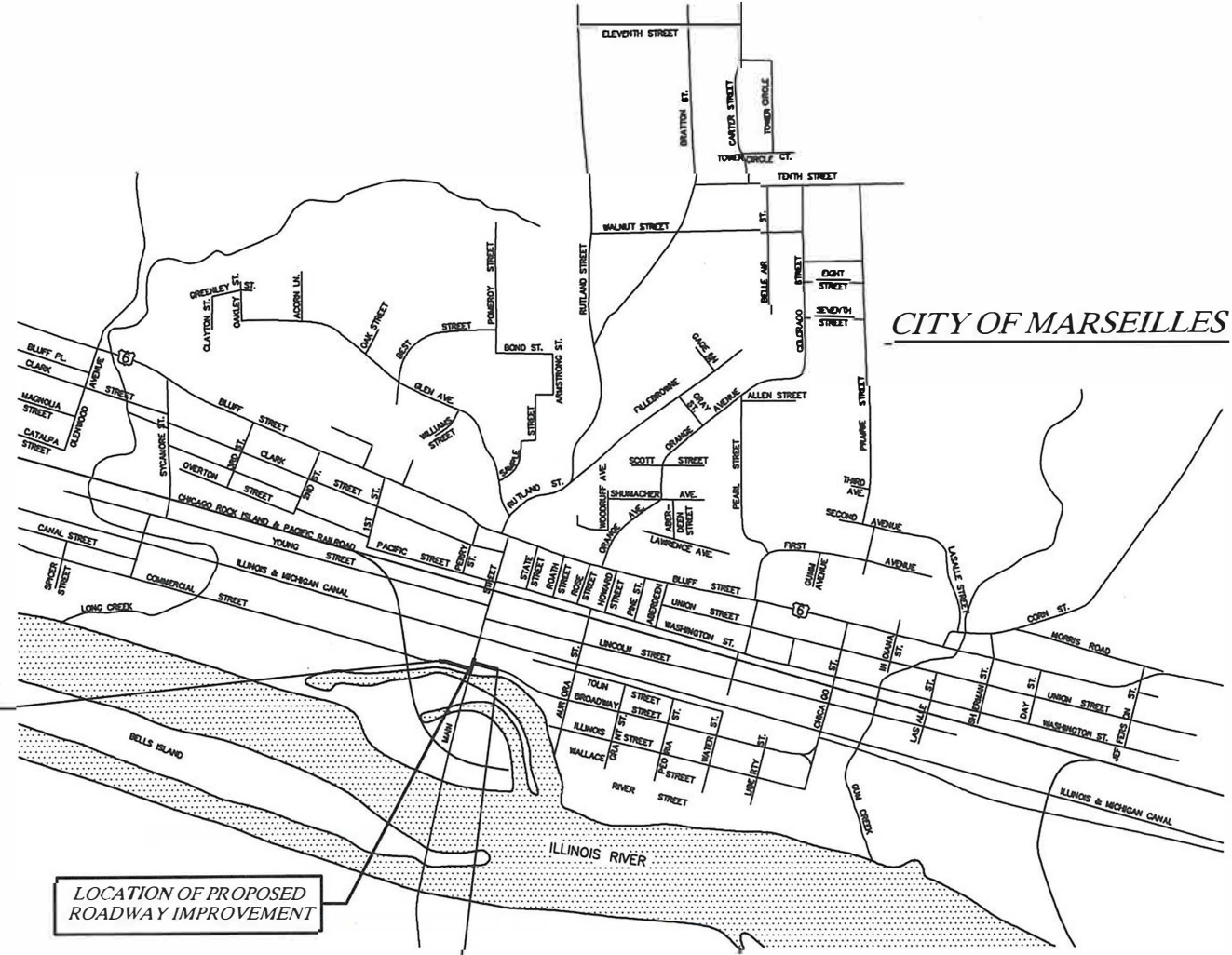
**INDEX OF SHEETS**

NO.	DESCRIPTION
1	COVER SHEET
2	GENERAL NOTES, LEGEND & PAVEMENT DESIGN
3	SUMMARY OF QUANTITIES
4	TYPICAL SECTIONS & CONSTRUCTION DETAILS
5	QUANTITY SCHEDULES
6	DEMOLITION PLAN
7	INTERSECTION DETAIL
8	PAVEMENT JOINT PLAN
9-10	PLAN & PROFILE SHEETS
11-12	CROSS SECTION SHEETS

F.A.S ROUTE 268A SECTION 19-00054-00-PV  
PROJECT MWW2(187)  
JOB NO. C-93-018-21  
CONTRACT NO. 87752

**MARSEILLES CITY OFFICIALS**

MAYOR	JIM HOLLENBECK
COMMISSIONER	BOBBY KAMINSKI
COMMISSIONER	NATHAN SCHAEFER
COMMISSIONER	JIM BUCKINGHAM
COMMISSIONER	GARY LEWEY
CITY CLERK	LESLEY HART
CITY TREASURER	CHERYL GRAY
CITY ATTORNEY	RICHARD BURTON
CITY ENGINEER	MICHAEL ETSCHIED



ROADWAY IMPROVEMENT  
BEGINS STA. 10+00

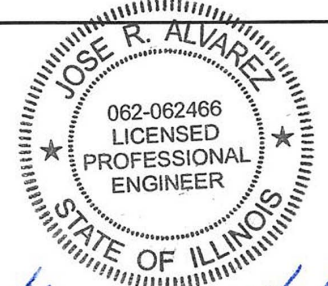
ROADWAY IMPROVEMENT  
ENDS STA. 16+06

VICINITY MAP  
NO SCALE



TOWNSHIP 33 NORTH, RANGE 5 EAST OF 3RD P.M.

ROADWAY IMPROVEMENT GROSS & NET LENGTH = 606 FT. = 0.115 MILES



PREPARED BY:

*Jose R. Alvarez* DATE: 4/9/2021  
JOSE R. ALVAREZ  
I.R.P.E. NO. 62-062466  
EXPIRES NOVEMBER 30, 2021

APPROVED BY:

*Jim Hollenbeck* DATE: 4/9/21  
JIM HOLLENBECK, MAYOR  
CITY OF MARSEILLES

STATE OF ILLINOIS DEPARTMENT OF TRANSPORTATION DIVISION OF HIGHWAYS	
SUBMITTED	<i>Michael Etschied</i> Apr. 9, 2021 CITY ENGINEER
PASSED	<i>Jim Hollenbeck</i> APRIL 13, 2021 DISTRICT ENGINEER OF LOCAL ROADS & STREETS
RELEASED FOR BID BASED ON LIMITED REVIEW	<i>Jim Hollenbeck</i> APR 13, 2021 REGION 2 ENGINEER

**HIGHWAY STANDARDS**

NO.	DESCRIPTION
280001-07	TEMPORARY EROSION CONTROL SYSTEMS
420701-03	PAVEMENT WELDED WIRE REINFORCEMENT
424001-11	PERPENDICULAR CURB RAMPS FOR SIDEWALKS
602301-04	INLET - TYPE A
602306-03	INLET - TYPE B
604006-05	FRAME AND GRATE TYPE 3
606001-07	CONCRETE CURB TYPE B AND COMBINATION CONCRETE CURB AND GUTTER
631006-08	TRAFFIC BARRIER TERMINAL, TYPE 1B
701006-05	OFF-RD OPERATIONS, 2L, 2W 15" TO 24" FROM PAVEMENT EDGE
701501-06	URBAN LANE CLOSURE, 2L, 2W, UNDIVIDED
701801-06	SIDEWALK, CORNER OR CROSSWALK CLOSURE
701901-08	TRAFFIC CONTROL DEVICES
720001-01	SIGN PANEL MOUNTING DETAILS
720006-04	SIGN PANEL ERECTION DETAILS
728001-01	TELESCOPING STEEL SIGN SUPPORT
731001-01	BASE FOR TELESCOPING STEEL SIGN SUPPORT
780001-05	TYPICAL PAVEMENT MARKINGS
B.L.R. 10-7	PCC PAVEMENT SPECIAL (NONREINFORCED)



J.U.L.I.E. SYSTEM  
THE TOLL FREE TELEPHONE  
NUMBER FOR JOINT UTILITY  
INFORMATION FOR EXCAVATORS  
IS 1-800-892-0123 OR 811

FILE NAME = J:\ENGINEERING\PLAN SHEETS\2057.B5 C&D.DWG	DESIGNED - J.R.A.	REVISED -	<b>RENWICK &amp; ASSOCIATES, INC.</b> 1304 Gemini Circle Ottawa, Illinois 61350 TEL: 815-434-3200 FAX: 815-434-3968 <small>PROFESSIONAL DESIGN FIRM #184-004957</small>	<b>COMMERCIAL &amp; BROADWAY STREET REALIGNMENT CITY OF MARSEILLES, IL.</b>	F.A.U. RTE.	SECTION	COUNTY	TOTAL SHEETS	SHEET NO.
PLOT DATE = APRIL 9, 2021	DRAWN - M.E.M.	REVISED -			1277	19-00054-00-PV	LASALLE	12	1
PLOT SCALE = 1"=50'	CHECKED -	REVISED -			CONTRACT NO. 87752 ILLINOIS				
	DATE -	REVISED -							

GENERAL NOTES

1. THE THICKNESS OF HOT-MIX ASPHALT ON THE PLANS IS THE NOMINAL THICKNESS. DEVIATIONS FROM THE NOMINAL THICKNESS WILL BE PERMITTED WHEN SUCH DEVIATIONS OCCUR DUE TO IRREGULARITIES IN THE EXISTING SURFACE ON WHICH THE HOT-MIX ASPHALT IS PLACED.

2. THE FOLLOWING RATES OF APPLICATION HAVE BEEN ASSUMED IN CALCULATING PLAN QUANTITIES:

AGGREGATE BASE & SURFACE COURSES, TYPE A & B	2.05	TON/CU YD
BITUMINOUS MATERIALS (PRIME COAT)		
FOR AGGREGATE BASES	0.25	LB/SQ FT
FOR MILLED HMA & AGED HMA	0.05	LB/SQ FT
FOR HMA LIFTS	0.025	LB/SQ FT
INCIDENTAL HOT-MIX ASPHALT SURFACE	112	LBS/SQ YD/INCH

3. ALL SAW CUTTING OF EXISTING PAVEMENTS, CURB & GUTTERS, DRIVEWAYS, AND SIDEWALKS, SHALL BE CONSIDERED INCIDENTAL TO THE CONTRACT. THE MINIMUM SAW CUT DEPTH SHALL BE AS FOLLOWS UNLESS OTHERWISE SPECIFIED:

ITEM(S)	MINIMUM DEPTH (IN.)
CONCRETE PAVEMENT	10"
CONCRETE CURBS, GUTTERS, & DRIVEWAYS	6"
CONCRETE SIDEWALKS	3"
HMA SURFACES	1 1/2"

4. THE CONTRACTOR WILL PROVIDE FOR TEMPORARY DRAINAGE UNTIL THE CONCRETE PAVEMENT IS PLACED.

5. EXISTING CASTINGS, FRAMES AND GRATES REMOVED AND NOT SCHEDULED FOR REUSE ARE THE PROPERTY OF THE CITY AND SHALL BE TRANSPORTED TO CITY FACILITIES AS DIRECTED BY THE PUBLIC WORKS SUPERINTENDENT IN CHARGE OR THE ENGINEER.

6. THE CONTRACTOR WILL PROTECT ALL TREES AND BUSHES FROM DAMAGE DUE TO HIS OPERATIONS UNLESS SCHEDULED FOR REMOVAL ON PLANS

7. THE LOCATION OF EXISTING UNDERGROUND UTILITIES ARE SHOWN BASED IN LARGE PART FROM INFORMATION FURNISHED BY UTILITY COMPANIES AND OTHERS. THE ACTUAL LOCATION OR EXISTENCE MAY BE CONSIDERABLY DIFFERENT. THE ENGINEER DOES NOT WARRANT THE LOCATION OR ANY SPECIFIC INFORMATION CONCERNING UNDERGROUND UTILITIES. IT SHALL BE THE CONTRACTOR'S RESPONSIBILITY TO VERIFY THE CORRECTNESS OF THE SAME PRIOR TO THE START OF CONSTRUCTION BY UNCOVERING UNDERGROUND UTILITIES IN ALL LOCATIONS WHERE HE FEELS THE PROPOSED CONSTRUCTION MAY NEED TO BE ALTERED TO PREVENT CONFLICTS IN LINE, GRADE OR WORKING CLEARANCES. THE CONTRACTOR IS EXPECTED TO WORK ADJACENT TO, BENEATH, ABOVE AND IN CLOSE PROXIMITY TO ALL EXISTING UTILITIES. ANY NECESSARY CHANGES DURING CONSTRUCTION WILL BE DEALT WITH ON A CASE BY CASE BASIS.

SHOULD IT BE NECESSARY TO RELOCATE ANY EXISTING UNDERGROUND UTILITY TO PREVENT LINE OR GRADE CONFLICTS WITH THE NEW CONSTRUCTION, THE CONTRACTOR SHALL IMMEDIATELY ADVISE THE ENGINEER.

8. THE CONTRACTOR SHALL BE RESPONSIBLE FOR PROTECTING UTILITY PROPERTY FROM CONSTRUCTION OPERATIONS AS OUTLINED IN ARTICLE 107.39 OF THE STANDARD SPECIFICATIONS. THE J.U.L.I.E. NUMBER IS 1-800-892-0123. A MINIMUM OF FORTY-EIGHT HOURS ADVANCE NOTICE IS REQUIRED. MEMBERS OF J.U.L.I.E. KNOWN TO BE WITHIN THE LIMITS OF THE IMPROVEMENT ARE:

UTILITY	
AMEREN IP	ELECTRIC
NICOR GAS	NATURAL GAS
MARSEILLES TELEPHONE CO.	PHONE
MEDIACOM LLC	CABLE TV
CITY OF MARSEILLES	STORM SEWERS, SANITARY SEWERS, WATERMANS & SERVICES

9. ABANDONED UNDERGROUND UTILITIES THAT CONFLICT WITH CONSTRUCTION SHALL BE DISPOSED OF OUTSIDE THE LIMITS OF THE RIGHT OF WAY ACCORDING TO ARTICLE 202.03 OF THE STANDARD SPECIFICATIONS.

10. THE CONTRACTOR WILL BE FULLY RESPONSIBLE FOR THE RESTORATION OF ANY AND ALL CURB AND GUTTER, DRIVEWAYS, SIDEWALKS, PARKING LOTS AND STREETS DAMAGED OR DESTROYED DURING THE CONSTRUCTION OF THIS PROJECT. ALL CURB AND GUTTER, DRIVEWAYS, SIDEWALKS, PARKING LOTS AND STREETS DAMAGED BY THIS CONTRACTOR'S WORK WILL BE REPAIRED OR REPLACED.

LEGEND

	PROPOSED STORM SEWER
	EXISTING STORM SEWER
	EXISTING SANITARY SEWER
	EXISTING SANITARY SEWER FORCE MAIN
	EXISTING GAS
	ROAD CENTERLINE
	EXISTING WATER MAIN
	PROPOSED WATER MAIN
	EXISTING FENCE LINE
	LOT OR PROPERTY LINE
	R.O.W. LINE
	TELEPHONE PEDESTAL
	EXISTING CURB INLET
	LIGHT POLE
	WATER VALVE
	FIRE HYDRANT
	POWER POLE
	GUY WIRE
	SIGN
	EXISTING SANITARY MANHOLE
	EXISTING STORM MANHOLE
	PROPOSED STORM MANHOLE
	PROPOSED CURB INLET

PAVEMENT DESIGN DATA

NON-REINFORCED JOINTED RIGID PAVEMENT WITH A 80,000 LB. LOAD LIMIT

CLASS III ROAD  
 ADT (2016) 2,250  
 DESIGN SPEED 25 MPH  
 DESIGN PERIOD - 20 YEARS  
 SDT (2031) - 2,400  
 PERCENT OF SDT PV = 91.0% SU = 5% MU = 4%  
 PV = 2,184 SU = 120 MU = 96  
 TRAFFIC FACTOR = 0.7 (BLRS MANUAL FIGURE 44-2A)  
 PRE-ADJUSTED RIGID PAVEMENT THICKNESS: 7.4 INCHES  
 ADJUSTMENTS:  
 75% RELIABILITY -0.50 INCH  
 12 FT LANE WIDTH -0.25 INCH  
 TOTAL ADJUSTMENTS -0.75 INCH

PAVEMENT THICKNESS REQUIRED 6.65 INCHES  
 PAVEMENT THICKNESS TO BE CONSTRUCTED 8.0 INCHES  
 WITH 6"x6" WELDED WIRE PAVEMENT FABRIC (58# PER 100 SQ. FT.)

HMA MIXTURE REQUIREMENT TABLE	
LOCATION(S):	ENTIRE PROJECT
MIXTURE USE(S):	HMA INCIDENTAL
BINDER GRADE (PG)	PF 64-22
Design Air Voids:	4.0% @ N50
Mixture Composition: (Mixture Gradation)	IL 9.5
Mixture Weight:	112.0 LB/SY/IN
Quality Management Program	QCQA
Sublot Size:	NA
Density Test Method	Satisfaction of Engineer

FILE NAME= J:\ENGINEERING\PLAN SHEETS\2057.65 C&D.DWG  
 PLOT DATE = APRIL 9, 2021  
 PLOT SCALE = 1"=50'

DESIGNED -- J.R.A.	REVISED --
DRAWN -- M.E.M.	REVISED --
CHECKED --	REVISED --
DATE --	REVISED --

RENWICK & ASSOCIATES, INC.

1304 Gemini Circle  
 Ottawa, Illinois 61350  
 TEL: 815-434-3200  
 FAX: 815-434-3968  
 PROFESSIONAL DESIGN FIRM #184-004957



GENERAL NOTES, LEGEND & PAVEMENT DESIGN

F.A.U. RTE.	SECTION	COUNTY	TOTAL SHEETS	SHEET NO.
1277	19-00054-00-PV	LASALLE	12	2
CONTRACT NO. 87752		ILLINOIS		

CODE NO.	ITEM	UNIT	TOTAL QUANTITY	CONSTRUCTION TYPE CODE: 0004	
				PARTICIPATING	NON-PARTICIPATING
* 20200100	EARTH EXCAVATION	CU YD	225	225	
20200200	ROCK EXCAVATION	CU YD	50	50	
20400800	FURNISHED EXCAVATION	CU YD	366	366	
21101615	TOPSOIL FURNISH AND PLACE, 4"	SQ YD	1136	1136	
25000110	SEEDING, CLASS 1A	ACRE	0.23	0.23	
25000400	NITROGEN FERTILIZER NUTRIENT	POUND	21	21	
25000500	PHOSPHORUS FERTILIZER NUTRIENT	POUND	21	21	
25000600	POTASSIUM FERTILIZER NUTRIENT	POUND	21	21	
25100630	EROSION CONTROL BLANKET	SQ YD	1136	1136	
28000400	PERIMETER EROSION BARRIER	FOOT	585	585	
28000500	INLET AND PIPE PROTECTION	EACH	12	12	
* 35100300	AGGREGATE BASE COURSE, TYPE A 4"	SQ YD	2970	2970	
* 35101582	AGGREGATE BASE COURSE, TYPE B 2"	SQ YD	545	545	
* 35101600	AGGREGATE BASE COURSE, TYPE B 4"	SQ YD	242	242	
* 40200800	AGGREGATE SURFACE COURSE, TYPE B	TON	50	50	
40600275	BITUMINOUS MATERIALS (PRIME COAT)	POUND	200	200	
40800050	INCIDENTAL HOT-MIX ASPHALT SURFACING	TON	65	65	
42300200	PORTLAND CEMENT CONCRETE DRIVEWAY PAVEMENT, 6 INCH	SQ YD	215	215	
42400100	PORTLAND CEMENT CONCRETE SIDEWALK 4 INCH	SQ FT	4870	4870	
42400800	DETECTABLE WARNINGS	SQ FT	42	42	
44000100	PAVEMENT REMOVAL	SQ YD	2562	2,562	
44000200	DRIVEWAY PAVEMENT REMOVAL	SQ YD	40	40	
44000500	COMBINATION CURB AND GUTTER REMOVAL	FOOT	1120	1120	
44000600	SIDEWALK REMOVAL	SQ FT	6060	6060	
Δ * 56100035	DUCTILE IRON WATER MAIN TEE, 10" X 8"	EACH	2		2
Δ * 56100700	WATER MAIN 8"	FOOT	608		608
Δ * 56100800	WATER MAIN 10"	FOOT	146		146
Δ * 56101150	DUCTILE IRON WATER MAIN REDUCER, 8" X 6"	EACH	1		1
Δ * 56105000	WATER VALVES 8"	EACH	3		3
Δ * 56105100	WATER VALVES 10"	EACH	3		3
Δ 56108900	TAPPING VALVES AND SLEEVES 8"	EACH	1		1
Δ * 56109420	DUCTILE IRON WATER MAIN FITTINGS 8" 45.00 DEGREE BEND	EACH	3		3
Δ * 56109422	DUCTILE IRON WATER MAIN FITTINGS 10" 45.00 DEGREE BEND	EACH	4		4
Δ * 56200300	WATER SERVICE LINE 1"	FOOT	230	230	
Δ * 56201400	CORPORATION STOPS 1"	EACH	6		6
Δ * 56400500	FIRE HYDRANTS TO BE REMOVED	EACH	2	2	
Δ 56500700	DOMESTIC WATER SERVICE BOXES TO BE REMOVED	EACH	8	8	
Δ * 56500800	DOMESTIC WATER SERVICE BOXES	EACH	6	6	
59300100	CONTROLLED LOW-STRENGTH MATERIAL	CU YD	231	41	190
60235700	INLETS, TYPE A, TYPE 3 FRAME AND GRATE	EACH	6	6	
60240220	INLETS, TYPE B, TYPE 3 FRAME AND GRATE	EACH	2	2	
60255500	MANHOLES TO BE ADJUSTED	EACH	7	7	

\* SEE SPECIAL PROVISIONS  
Δ SPECIALTY ITEMS

CODE NO.	ITEM	UNIT	TOTAL QUANTITY	CONSTRUCTION TYPE CODE: 0004	
				PARTICIPATING	NON-PARTICIPATING
60260100	INLETS TO BE ADJUSTED	EACH	1	1	
60500060	REMOVING INLETS	EACH	3	3	
60603800	COMBINATION CONCRETE CURB AND GUTTER, TYPE B-6.12	FOOT	1207	1207	
Δ 63100041	TRAFFIC BARRIER TERMINAL, TYPE 1B	EACH	1		1
63200310	GUARDRAIL REMOVAL	FOOT	20	20	
67100100	MOBLIZATION	L SUM	1		1
70102620	TRAFFIC CONTROL AND PROTECTION, STANDARD 701501	L SUM	1		1
* 70106500	TEMPORARY BRIDGE TRAFFIC SIGNALS	EACH	3	3	
Δ 72000100	SIGN PANEL - TYPE 1	SQ FT	6	6	
Δ 72400710	RELOCATE SIGN PANEL - TYPE 1	SQ FT	12		12
Δ 72800100	TELESCOPING STEEL SIGN SUPPORT	FOOT	31	31	
Δ 78008200	POLYUREA PAVEMENT MARKING TYPE I- LETTERS AND SYMBOLS	SQ FT	87	87	
Δ 78008210	POLYUREA PAVEMENT MARKING TYPE I- LINE 4"	FOOT	500	500	
Δ 78008230	POLYUREA PAVEMENT MARKING TYPE I- LINE 6"	FOOT	220	220	
Δ 78008240	POLYUREA PAVEMENT MARKING TYPE I- LINE 8"	FOOT	102	102	
Δ 78008250	POLYUREA PAVEMENT MARKING TYPE I- LINE 12"	FOOT	220	220	
Δ 78008270	POLYUREA PAVEMENT MARKING TYPE I- LINE 24"	FOOT	76	76	
550A0340	STORM SEWERS, CLASS A, TYPE 2 12"	FOOT	216	216	
* LR420029	PORTLAND CEMENT CONCRETE PAVEMENT 8" (SPECIAL)	SQ YD	2740	2740	
* X0322817	PROPOSED STORM SEWER CONNECTION TO EXISTING MANHOLE	EACH	5	5	
* X0350810	BOLLARD REMOVAL	EACH	3	3	
* X4240440	PORTLAND CEMENT CONCRETE SIDEWALK 6 INCH, SPECIAL	SQ FT	240	240	
* X4401198	HOT-MIX ASPHALT SURFACE REMOVAL, VARIABLE DEPTH	SQ YD	435	435	
Δ * X5620112	WATER SERVICE CONNECTION	EACH	6		6
Δ * X5630006	CUT AND CAP EXISTING 6" WATER MAIN	EACH	1		1
Δ * X5630008	CUT AND CAP EXISTING 8" WATER MAIN	EACH	1		1
Δ * X56300010	CUT AND CAP EXISTING 10" WATER MAIN	EACH	2		2
Δ * X5630706	CONNECTION TO EXISTING WATER MAIN 6"	EACH	1		1
Δ * X5630708	CONNECTION TO EXISTING WATER MAIN 8"	EACH	1		1
Δ * X5630710	CONNECTION TO EXISTING WATER MAIN 10"	EACH	2		2
Δ * X5640175	FIRE HYDRANT COMPLETE	EACH	2		2
Δ * X6026623	VALVE BOX	EACH	7		7
* X6026632	VALVE BOXES TO BE REMOVED	EACH	3	3	
* X7010216	TRAFFIC CONTROL AND PROTECTION, (SPECIAL)	L SUM	1		1
Δ * X7240500	RELOCATE EXISTING SIGNS	EACH	9	9	
* XX005696	SEWER CONNECTIONS TO STRUCTURES	EACH	1	1	
Δ * Z0001110	GAS VALVE TO BE ADJUSTED	EACH	6	6	
Δ * Z0015000	CURB STOPS 1"	EACH	6	6	
* Z0048900	RAILROAD TRACK REMOVAL	FOOT	250	250	
Δ * XX009469	WATER MAIN FITTING, CUT-IN SLEEVE, 6"	EACH	1		1
Δ * XX009470	WATER MAIN FITTING, CUT-IN SLEEVE, 10"	EACH	2		2

\* SEE SPECIAL PROVISIONS  
Δ SPECIALTY ITEMS

FILE NAME = J:\ENGINEERING\PLAN SHEETS\2057.65\_SCHED.DWG  
PLOT DATE = APRIL 9, 2021  
PLOT SCALE = 1"=1'

DESIGNED - J.R.A.	REVISED -
DRAWN - M.E.M.	REVISED -
CHECKED -	REVISED -
DATE -	REVISED -

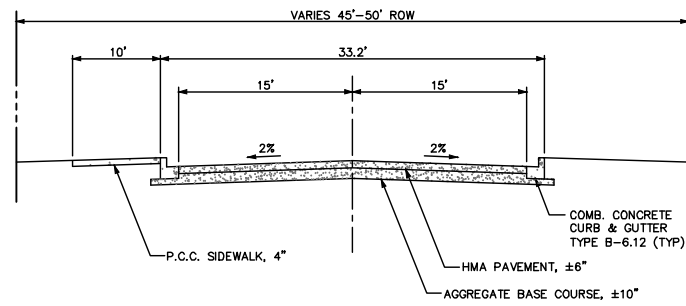
RENWICK & ASSOCIATES, INC.

1304 Gemini Circle  
Ottawa, Illinois 61350  
TEL: 815-434-3200  
FAX: 815-434-3968  
PROFESSIONAL DESIGN FIRM #184-00457

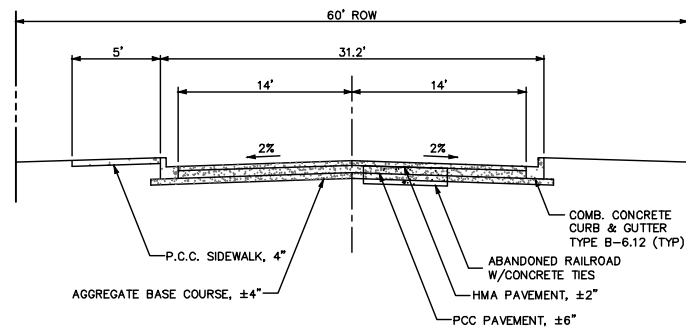


SUMMARY OF QUANTITIES

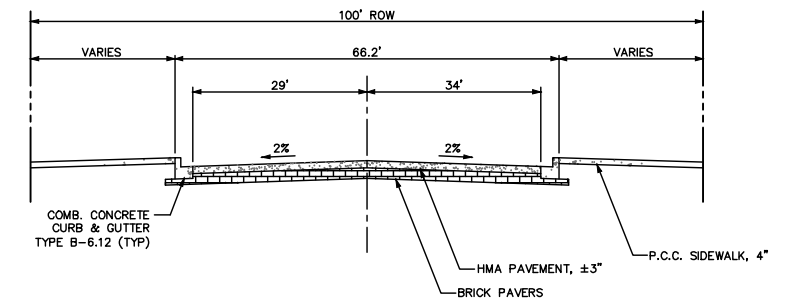
F.A.U. RITE	SECTION	COUNTY	TOTAL SHEETS	SHEET NO.
1277	19-00054-00-PV	LASALLE	12	3
CONTRACT NO. 87752		ILLINOIS		



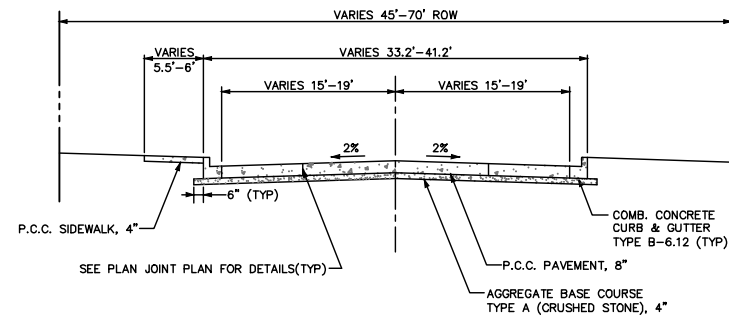
**COMMERCIAL STREET - EXISTING TYPICAL SECTION**  
NOT TO SCALE



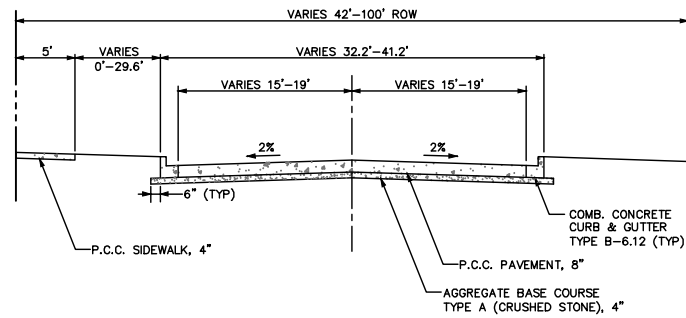
**BROADWAY STREET - EXISTING TYPICAL SECTION**  
NOT TO SCALE



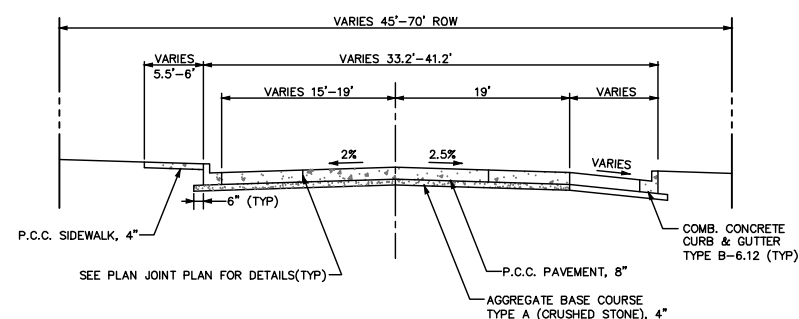
**MAIN STREET - EXISTING TYPICAL SECTION**  
NOT TO SCALE



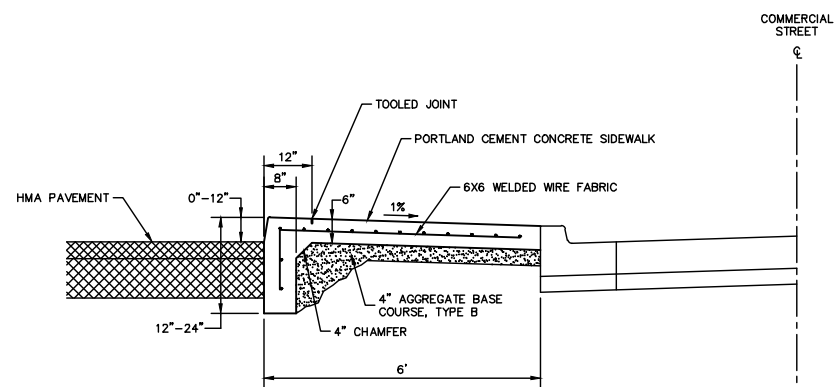
**STA. 10+20 TO STA. 12+43**  
**COMMERCIAL STREET - PROPOSED TYPICAL SECTION**  
NOT TO SCALE



**STA. 13+80 TO STA. 15+86**  
**BROADWAY STREET - PROPOSED TYPICAL SECTION**  
NOT TO SCALE



**STA. 12+43 TO STA. 13+27**  
**COMMERCIAL STREET - PROPOSED TYPICAL SECTION**  
NOT TO SCALE



**STA. 11+82 TO STA. 12+21**  
**PORTLAND CEMENT CONCRETE SIDEWALK 6 INCH, SPECIAL**  
**DETAIL**  
NO SCALE

FILE NAME = J:\ENGINEERING\PLAN SHEETS\2057.65 C&D.DWG  
PLOT DATE = APRIL 9, 2021  
PLOT SCALE = 1"=50'

DESIGNED	— J.R.A.	REVISED	—
DRAWN	— M.E.M.	REVISED	—
CHECKED	—	REVISED	—
DATE	—	REVISED	—

**RENWICK & ASSOCIATES, INC.**

1304 Gemini Circle  
Ottawa, Illinois 61350  
TEL: 815-434-3200  
FAX: 815-434-3968

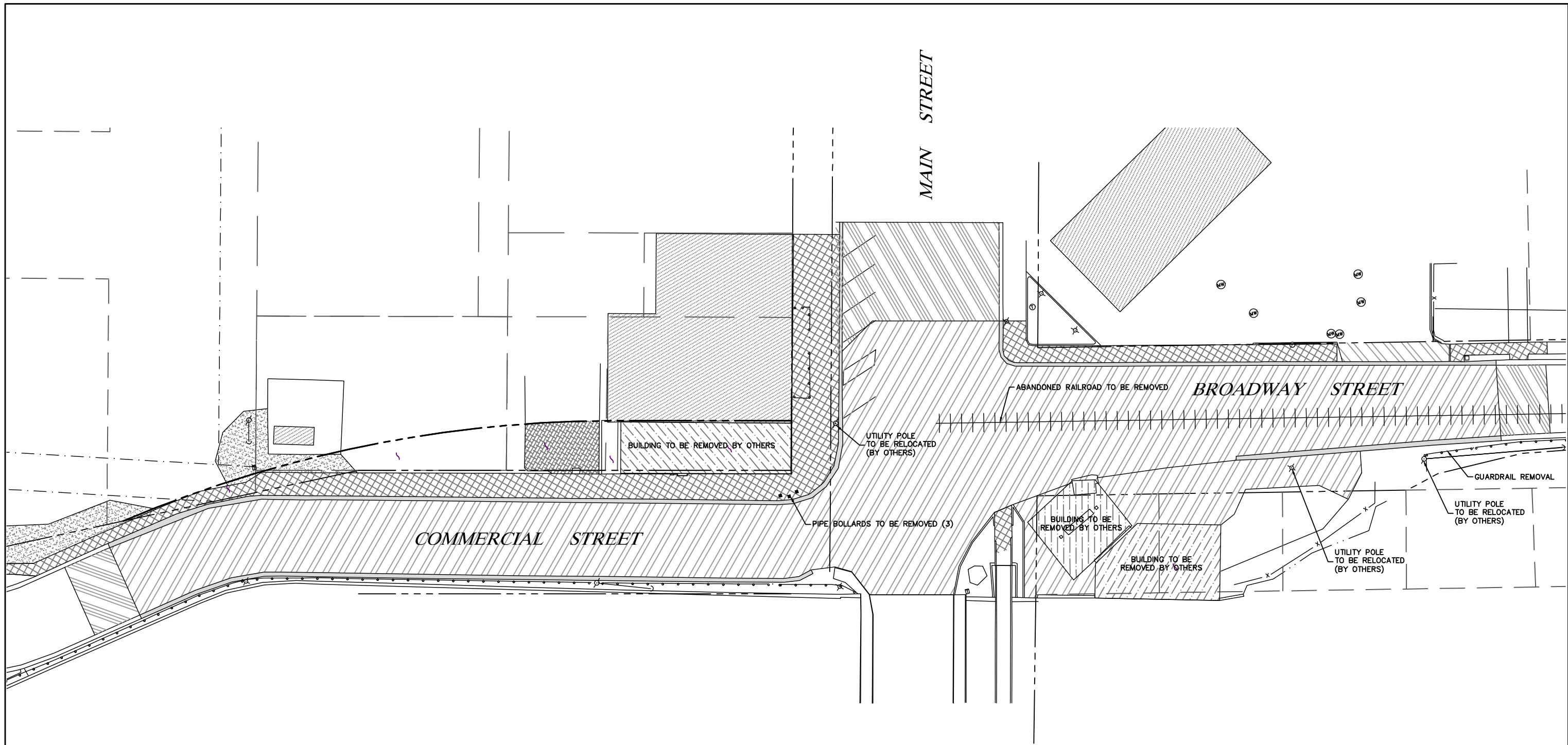


PROFESSIONAL DESIGN FIRM #184-004957








**TYPICAL SECTIONS & CONSTRUCTION DETAILS**

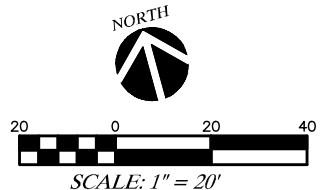
F.A.U. RTE.	SECTION	COUNTY	TOTAL SHEETS	SHEET NO.
1277	19-00054-00-PV	LASALLE	12	4
CONTRACT NO. 87752 ILLINOIS				





**LEGEND**

-  BUILDING TO BE REMOVED (BY OTHERS)
-  CONCRETE REMOVAL (INCLUDED IN EARTH EXCAVATION)
-  COMBINATION CONCRETE CURB & GUTTER REMOVAL
-  HMA PAVEMENT REMOVAL
-  DRIVEWAY PAVEMENT REMOVAL
-  HMA SURFACE REMOVAL
-  P.C.C. SIDEWALK REMOVAL



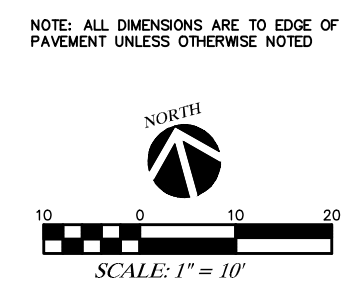
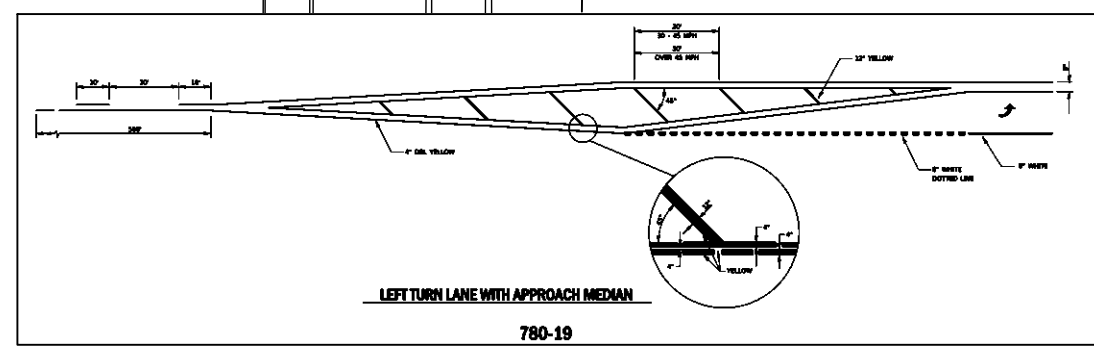
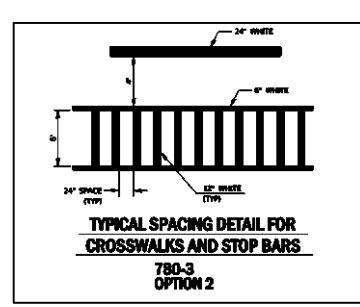
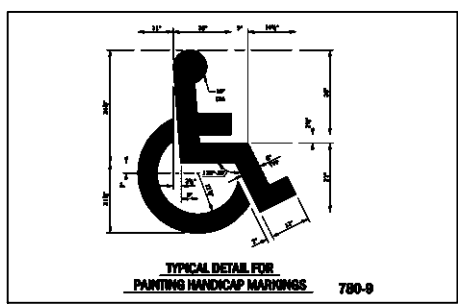
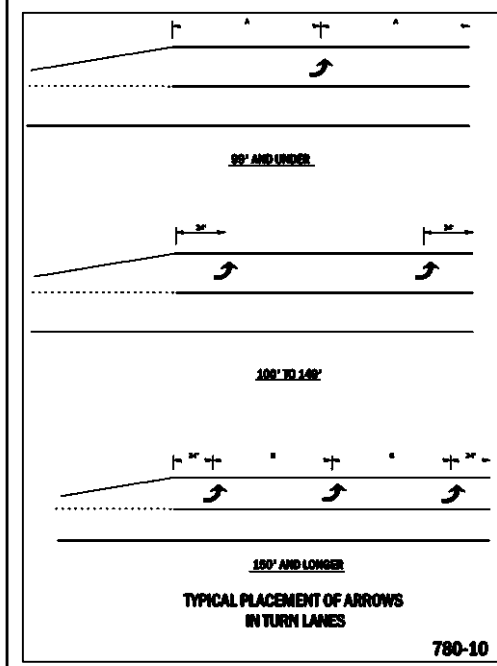
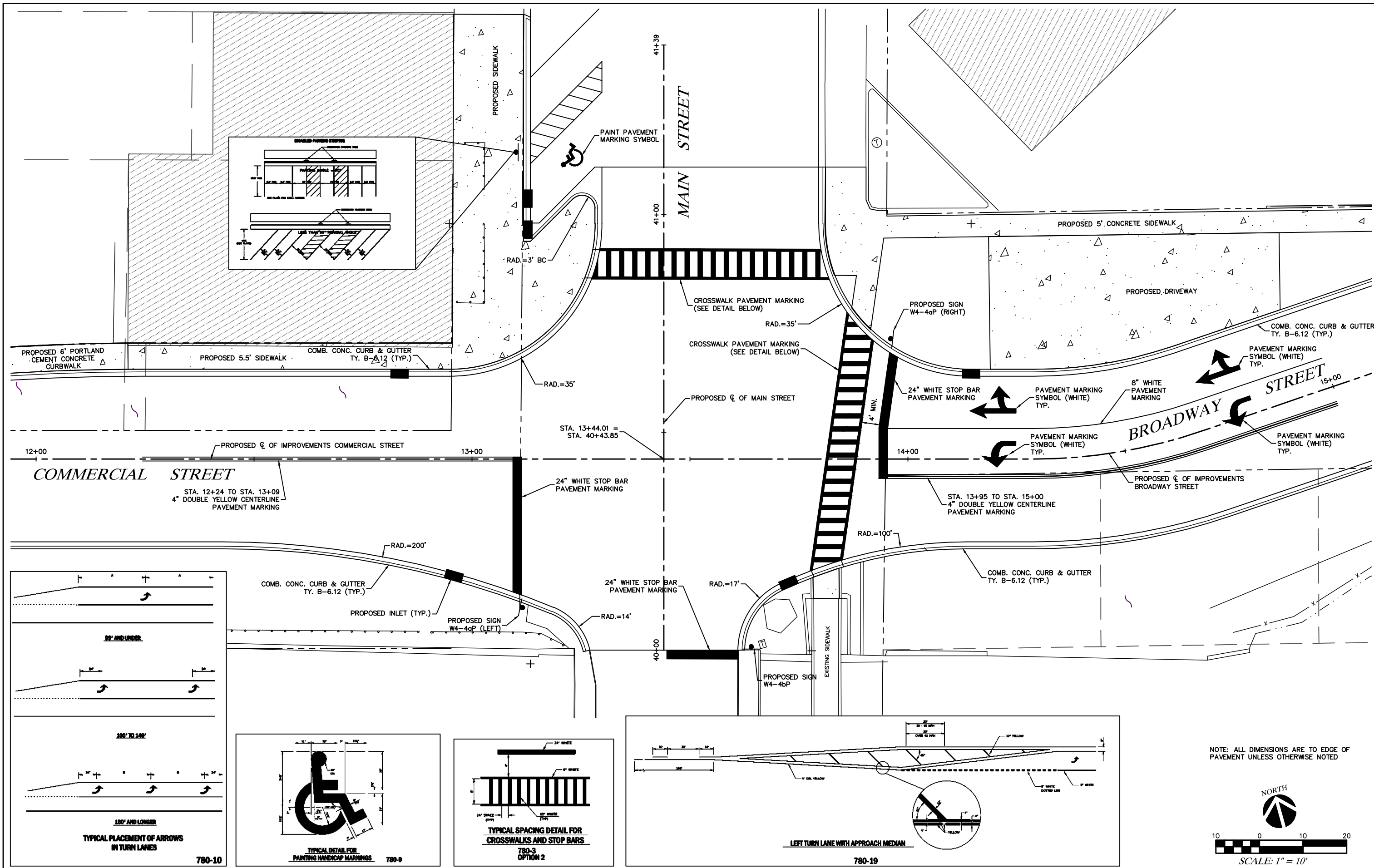
FILE NAME = J:\ENGINEERING\PLAN SHEETS\2057.65\_DEMO.DWG  
 PLOT DATE = APRIL 9, 2021  
 PLOT SCALE = 1"=20'

DESIGNED — J.R.A.	REVISED —
DRAWN — M.E.M.	REVISED —
CHECKED —	REVISED —
DATE —	REVISED —

**RENWICK & ASSOCIATES, INC.**  
 1304 Gemini Circle  
 Ottawa, Illinois 61350  
 TEL: 815-434-3200  
 FAX: 815-434-3968  
 PROFESSIONAL DESIGN FIRM #184-004957

**DEMOLITION PLAN**

F.A.U. RTE.	SECTION	COUNTY	TOTAL SHEETS	SHEET NO.
1277	19-00054-00-PV	LASALLE	12	6
CONTRACT NO. 87752 ILLINOIS				



NOTE: ALL DIMENSIONS ARE TO EDGE OF PAVEMENT UNLESS OTHERWISE NOTED

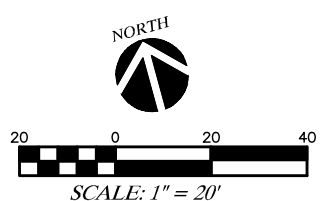
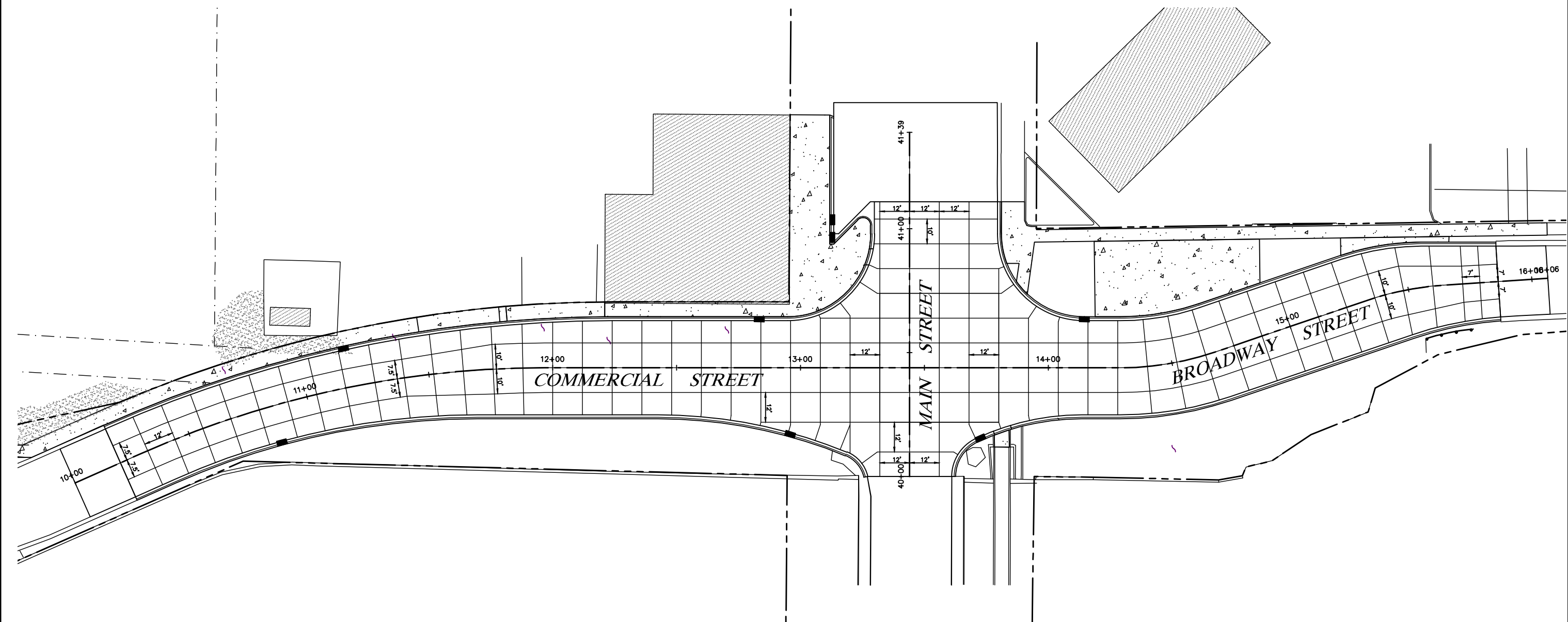
FILE NAME = J:\ENGINEERING\PLAN SHEETS\2057.65\_INT.DWG  
 PLOT DATE = APRIL 9, 2021  
 PLOT SCALE = 1"=10'

DESIGNED — J.R.A.	REVISED —
DRAWN — M.E.M.	REVISED —
CHECKED —	REVISED —
DATE —	REVISED —

**RENWICK & ASSOCIATES, INC.**  
 1304 Gemini Circle  
 Ottawa, Illinois 61350  
 TEL: 815-434-3200  
 FAX: 815-434-3968  
 PROFESSIONAL DESIGN FIRM #184-004957

**INTERSECTION DETAIL**

F.A.U. R.T.E.	SECTION	COUNTY	TOTAL SHEETS	SHEET NO.
1277	19-00054-00-PV	LASALLE	12	7
CONTRACT NO. 87752 ILLINOIS				



FILE NAME = J:\ENGINEERING\PLAN SHEETS\2057.65\_PAVT.DWG  
 PLOT DATE = MARCH 4, 2021  
 PLOT SCALE = 1"=20'

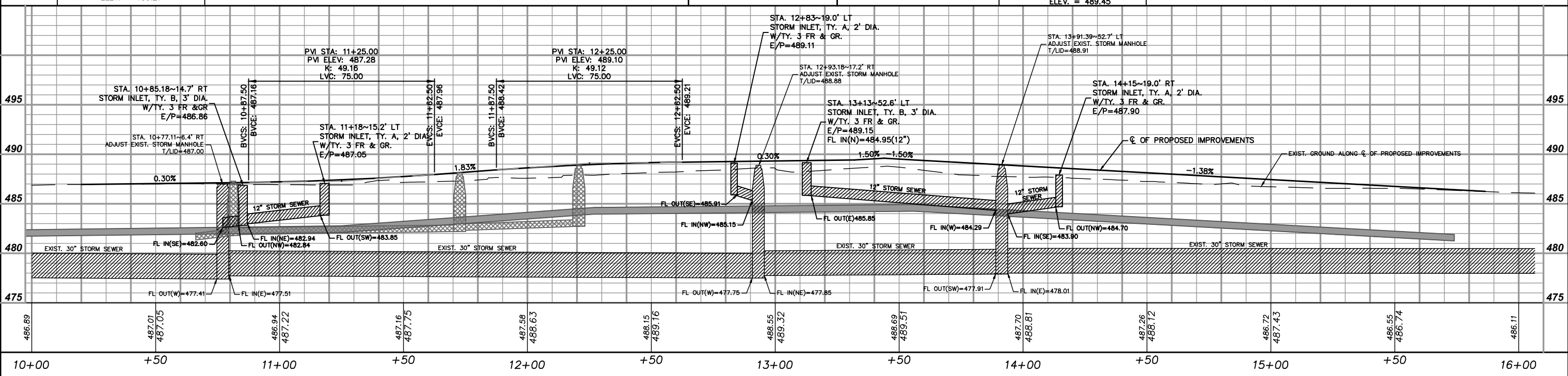
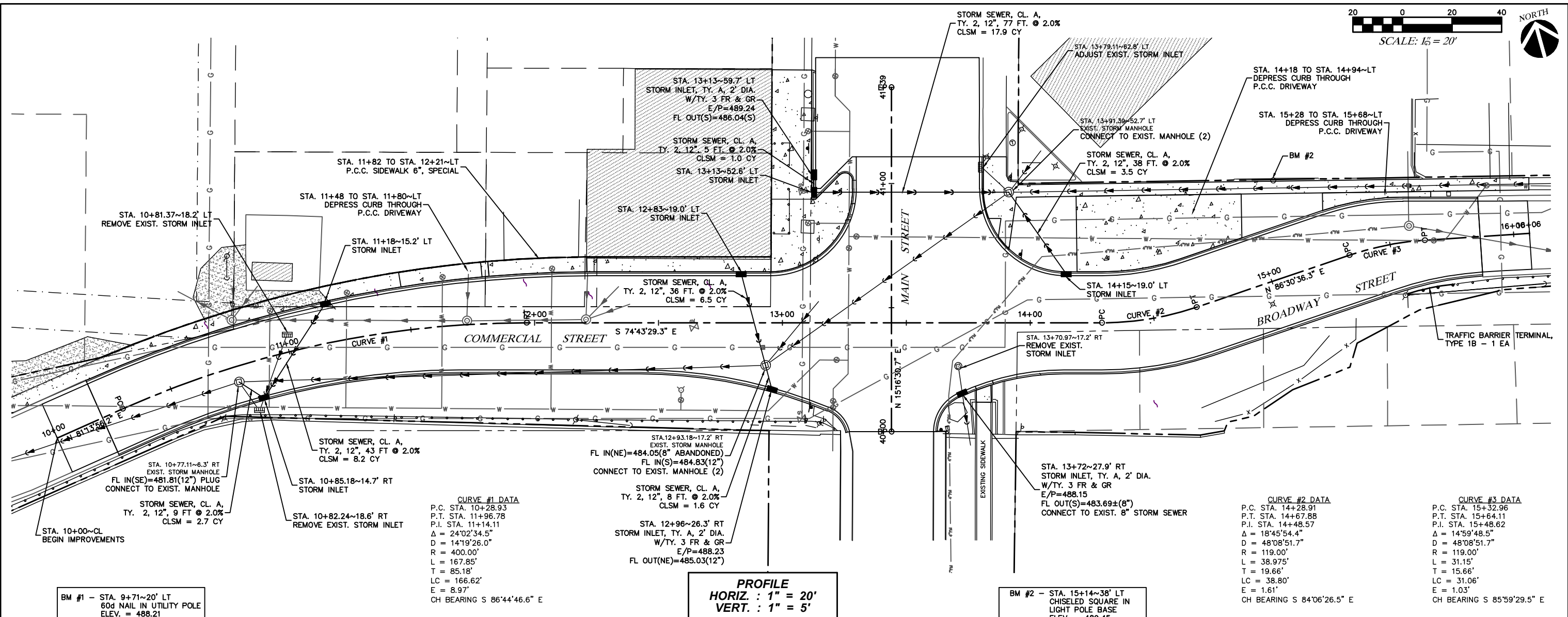
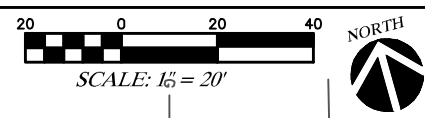
DESIGNED — J.R.A.	REVISED —
DRAWN — M.E.M.	REVISED —
CHECKED —	REVISED —
DATE —	REVISED —

**RENWICK & ASSOCIATES, INC.**  
 1304 Gemini Circle  
 Ottawa, Illinois 61350  
 TEL: 815-434-3200  
 FAX: 815-434-3968  
 PROFESSIONAL DESIGN FIRM #184-004957

*PAVEMENT JOINT PLAN*

F.A.U. RTE.	SECTION	COUNTY	TOTAL SHEETS	SHEET NO.
1277	19-00054-00-PV	LASALLE	12	8
CONTRACT NO. 87752 ILLINOIS				





FILE NAME = J:\ENGINEERING\PLAN SHEETS\2057.65\_PLPR.DWG  
PLOT DATE = APRIL 9, 2021  
PLOT SCALE = 1"=20'

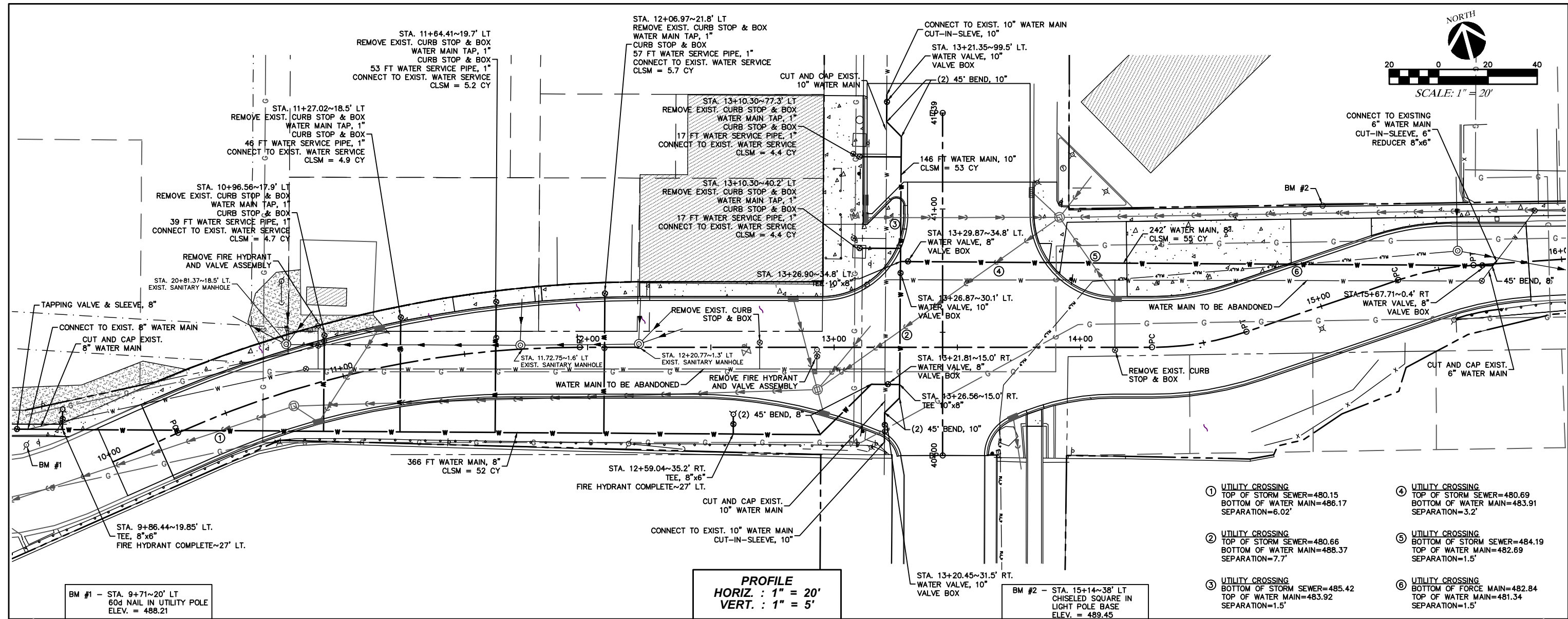
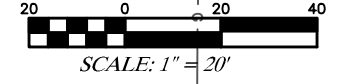
DESIGNED	J.R.A.	REVISED	
DRAWN	M.E.M.	REVISED	
CHECKED		REVISED	
DATE		REVISED	

**RENWICK & ASSOCIATES, INC.**  
1304 Gemini Circle  
Ottawa, Illinois 61350  
TEL: 815-434-3200  
FAX: 815-434-3968  
PROFESSIONAL DESIGN FIRM #184-004957

**COMMERCIAL & BROADWAY  
STREETS PLAN AND PROFILE**

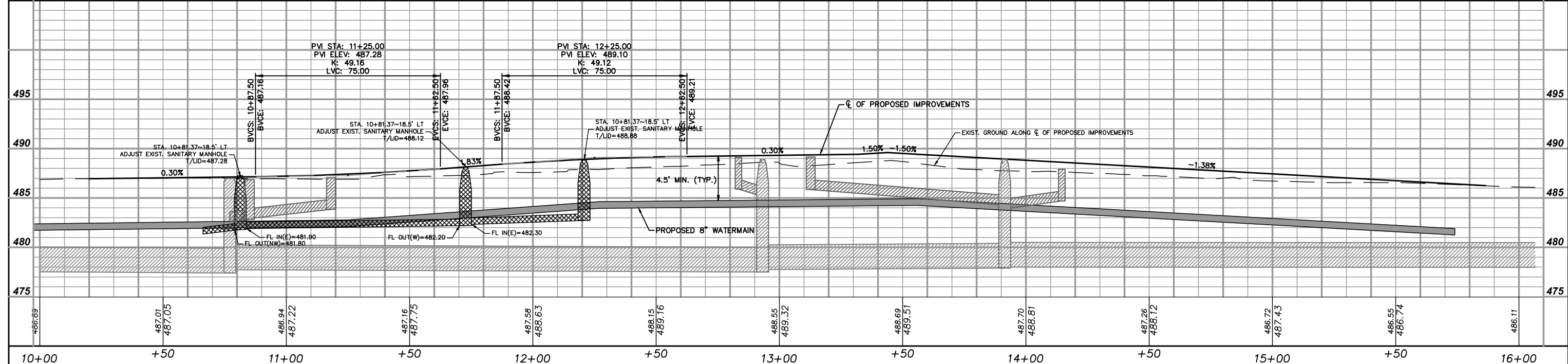
F.A.U. RT.	SECTION	COUNTY	TOTAL SHEETS	SHEET NO.
1277	19-00054-00-PV	LASALLE	12	9

CONTRACT NO. 87752 ILLINOIS



**PROFILE**  
**HORIZ. : 1" = 20'**  
**VERT. : 1" = 5'**

- ① UTILITY CROSSING  
TOP OF STORM SEWER=480.15  
BOTTOM OF WATER MAIN=486.17  
SEPARATION=6.02'
- ② UTILITY CROSSING  
TOP OF STORM SEWER=480.66  
BOTTOM OF WATER MAIN=488.37  
SEPARATION=7.7'
- ③ UTILITY CROSSING  
BOTTOM OF STORM SEWER=485.42  
TOP OF WATER MAIN=483.92  
SEPARATION=1.5'
- ④ UTILITY CROSSING  
TOP OF STORM SEWER=480.69  
BOTTOM OF WATER MAIN=483.91  
SEPARATION=3.2'
- ⑤ UTILITY CROSSING  
TOP OF STORM SEWER=484.19  
TOP OF WATER MAIN=482.69  
SEPARATION=1.5'
- ⑥ UTILITY CROSSING  
BOTTOM OF FORCE MAIN=482.84  
TOP OF WATER MAIN=481.34  
SEPARATION=1.5'



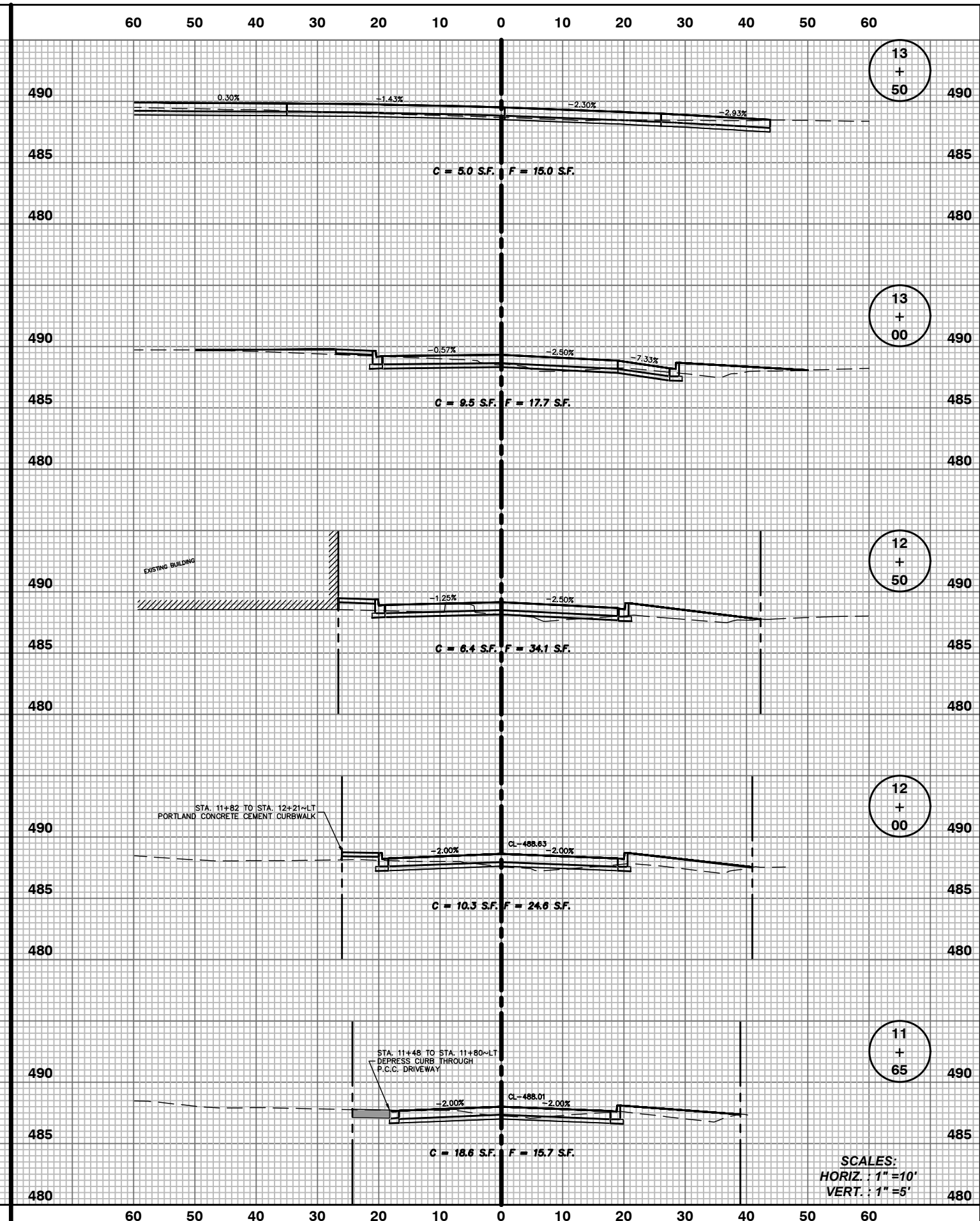
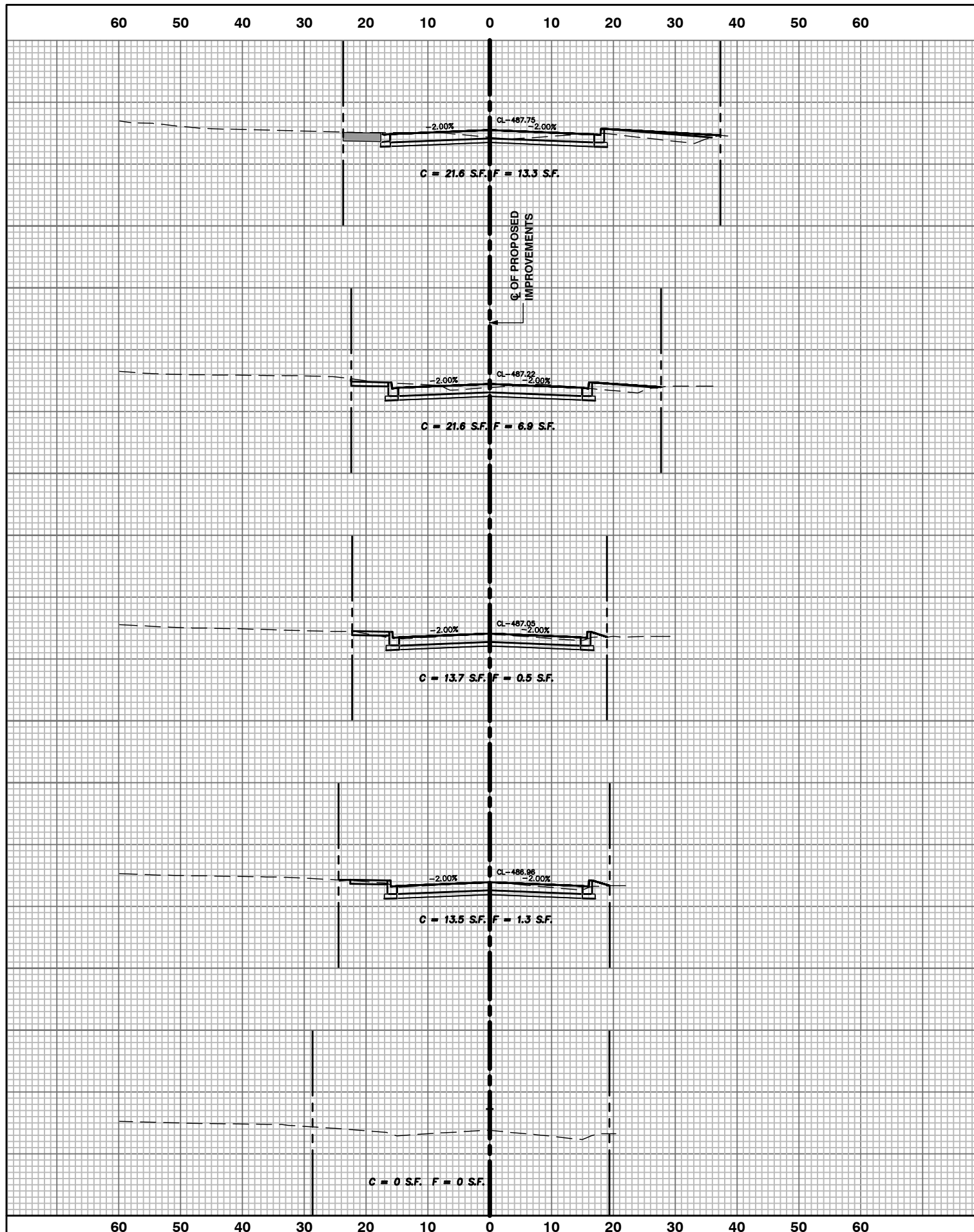
FILE NAME = J:\ENGINEERING\PLAN SHEETS\2057.65\_PLPR.DWG  
 PLOT DATE = APRIL 9, 2021  
 PLOT SCALE = 1"=20'

DESIGNED — J.R.A.	REVISED —
DRAWN — M.E.M.	REVISED —
CHECKED —	REVISED —
DATE —	REVISED —

**RENWICK & ASSOCIATES, INC.**  
 1304 Gemini Circle  
 Ottawa, Illinois 61350  
 TEL: 815-434-3200  
 FAX: 815-434-3968  
 PROFESSIONAL DESIGN FIRM #184-004957

**COMMERCIAL & BROADWAY  
 STREETS PLAN AND PROFILE**

F.A.U. R.T.E.	SECTION	COUNTY	TOTAL SHEETS	SHEET NO.
1277	19-00054-00-PV	LASALLE	12	10
CONTRACT NO. 87752 ILLINOIS				



FILE NAME = J:\ENGINEERING\PLAN SHEETS\2057.65\_XSEC.DWG  
 PLOT DATE = APRIL 9, 2021  
 PLOT SCALE = 1"=10'

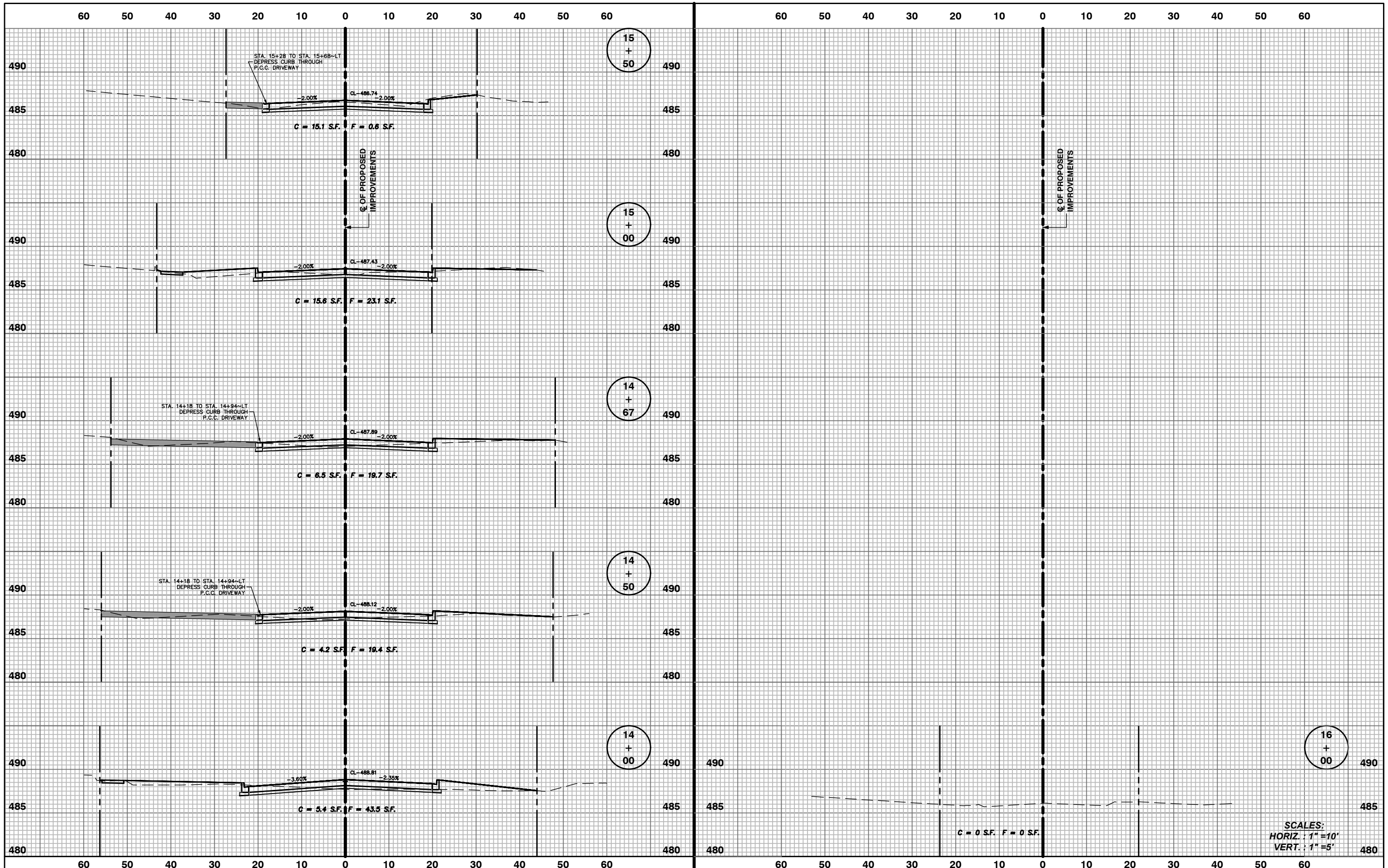
DESIGNED	J.R.A.	REVISED	---
DRAWN	M.E.M.	REVISED	---
CHECKED	---	REVISED	---
DATE	---	REVISED	---

**RENWICK & ASSOCIATES, INC.**  
 1304 Gemini Circle  
 Ottawa, Illinois 61350  
 TEL: 815-434-3200  
 FAX: 815-434-3968  
 PROFESSIONAL DESIGN FIRM #184-004957

**COMMERCIAL & BROADWAY  
 STREETS CROSS SECTION**

F.A.U. RTE.	SECTION	COUNTY	TOTAL SHEETS	SHEET NO.
1277	19-00054-00-PV	LASALLE	12	11
CONTRACT NO. 87752 ILLINOIS				

SCALES:  
 HORIZ. : 1"=10'  
 VERT. : 1"=5'



FILE NAME = J:\ENGINEERING\PLAN SHEETS\2057.65\_XSEC.DWG  
 PLOT DATE = APRIL 9, 2021  
 PLOT SCALE = 1"=10'

DESIGNED — J.R.A.	REVISED —
DRAWN — M.E.M.	REVISED —
CHECKED —	REVISED —
DATE —	REVISED —

**RENWICK & ASSOCIATES, INC.**

1304 Gemini Circle  
 Ottawa, Illinois 61350  
 TEL: 815-434-3200  
 FAX: 815-434-3968  
 PROFESSIONAL DESIGN FIRM #184-004957

**COMMERCIAL & BROADWAY  
 STREETS CROSS SECTION**

F.A.U. RTE.	SECTION	COUNTY	TOTAL SHEETS	SHEET NO.
1277	19-00054-00-PV	LASALLE	12	12
CONTRACT NO. 87752 ILLINOIS				

SCALES:  
 HORIZ. : 1"=10'  
 VERT. : 1"=5'