

State of Illinois
Department of Natural Resources
Office of Mines and Minerals
Abandoned Mined Lands Reclamation Division

Funded by the
 United States Department of Interior
 Federal Office of Surface Mining

North Utica Drifts
 Mine Reclamation
 AML-GLsE-2009
 La Salle County
 2LR

SCHEDULE OF DRAWINGS:

- 1 Cover Sheet
- 2 Summary of Quantities/General Notes/Location Map
- 3 Schedule of Quantities
- 4 Location 1 Plan Sheet
- 5 Locations 2 through 4 Plan Sheet
- 6 Location 1 Tree Planting Plan
- 7 Locations 2 through 4 Tree Planting Plan
- 8 Details

Contract No. M2009

North Utica Drifts
 La Salle County




A Voluntary Prebid meeting will be held Friday October 15th at 10:30am at the end of W. Washington St. in the Village of North Utica.



Prepared By IDNR Staff

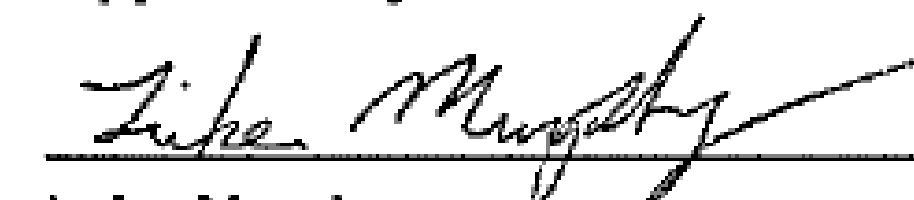
Approved for Bidding:


 Ronnie Huff, Director
 Office of Mines and Minerals
 Illinois Dept. of Natural Resources

Approved By:

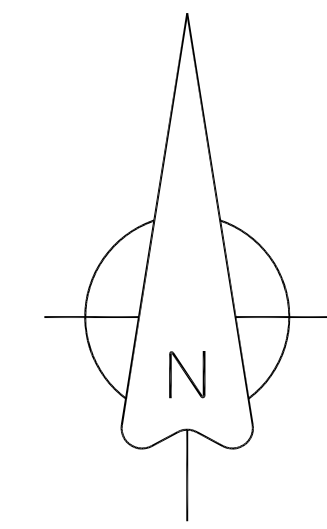

 Rita Lee, Manager
 AMLR Division

Approved By:


 Luke Murphy
 IL Licensed Professional Engineer
 No. 062.071192

Summary of Quantities

Item No.	#	Item	Section	QTY	Unit	Remarks
NRM20110	1	SPECIAL CLEARING	201	1	L SUM	
NRM20211	2	REMOVAL AND DISPOSAL OF UNSUITABLE MATERIAL	202	140	TON	BASED ON EPA, 1 TON PER CUBIC YARD
NRM20480	3	FURNISHED EXCAVATION	204	50	CU YD	
21101605	4	TOPSOIL FURNISH AND PLACE, 2"	IDOT 211	314	SQ YD	LOCATION 1 VO ONLY
NRM21510	5	SPECIAL EXCAVATION	215	1545	CU YD	
NRM21624	6	CA-FILL, CA 3	216	872	TON	
NRM21626	7	CA-FILL, CA 6	216	906	TON	
NRM21661	8	CLASS SI CONCRETE PLUG	216	110	CU YD	
NRM25040	9	NITROGEN FERTILIZER NUTRIENT	250	72	POUND	120 LBS/ACRE
NRM25050	10	PHOSPHORUS FERTILIZER NUTRIENT	250	85	POUND	141 LBS/ACRE
NRM25060	11	POTASSIUM FERTILIZER NUTRIENT	250	211	POUND	350 LBS/ACRE
NRM25070	12	AGRICULTURAL GROUND LIMESTONE	250	1.2	TON	2 TONS/ACRE
NRM25090	13	SEEDING	250	0.6	ACRE	
25100115	14	MULCH, METHOD 2	IDOT 251	0.6	ACRE	
NRM28045	15	PERIMETER EROSION BARRIER SILT FENCE	280	1362	FOOT	
28100809	16	STONE DUMPED RIPRAP, CLASS A5	IDOT 281	122	TON	
28100813	17	STONE DUMPED RIPRAP, CLASS A7	IDOT 281	196	TON	
28200200	18	FILTER FABRIC	IDOT 282	676	SQ YD	
40200800	19	AGGREGATE SURFACE COURSE, TYPE B	IDOT 402	24	TON	6" THICK CA-1, REMOVED AFTER PROJECT
44201692	20	CLASS D PATCHES, TYPE II, 4 INCH	IDOT 442	250	SQ YD	N DESIGN=50
44201694	21	CLASS D PATCHES, TYPE III, 4 INCH	IDOT 442	250	SQ YD	N DESIGN=50
NRM66540	22	TEMPORARY SAFETY FENCE	665	537	FOOT	
NRM66610	23	MINE OPENING MARKERS	666	4	EACH	
NRM67110	24	MOBILIZATION	671	1	L SUM	MAX 6% OF BID
A2001316	25	TREE, ACER SACCHARINUM (SILVER MAPLE), 2" CALIPER, BALLED AND BURLAPPED	IDOT 253	2	EACH	LOCATION 1
A2005616	26	TREE, OSTRYA VIRGINIANA (AMERICAN HOPHORNBEAM), 2" CALIPER, BALLED AND BURLAPPED	IDOT 253	3	EACH	LOCATIONS 2, 3, & 4



General Location Map



NOT TO SCALE

More Exact Locations Given on Sheet 4 through 5

General Notes

1. Unless otherwise noted on the plans, all disturbed areas within the construction limits shall be restored to pre-construction conditions. Those areas shall be fertilized, seeded, and mulched in accordance with the Project Special Provisions.
2. The Contractor is responsible for visiting the site and becoming familiar with the existing conditions and the proposed reclamation work prior to submitting a bid.
3. The Contractor shall provide and pay for all field engineering services to execute the project as specified in the Field Engineering section of the Project Special Provisions.
4. The Contractor is responsible for locating and protecting all existing utilities.
5. Unless noted on the plans, all onsite access roads may be used for construction and must be maintained during construction and restored to original or better condition at the completion of work by the Contractor. Access roads to the site as designated on the plans are to be maintained to the satisfaction of the IDNR Project Manager.
6. The construction limits shall be staked by the Contractor prior to construction. The Contractor is responsible for the repair and/or restitution at his own expense for all damages done to any area outside the construction limits.

Construction Notes

7. Tree and brush removed shall be completed in accordance with the Project Specifications. Tree clearing shall be completed between November 15th and March 31st.
8. If Silt Fence is not placed prior to November 15th, all work with heavy equipment on site must cease on March 31st. Heavy equipment shall not be allowed back on site until the following November 15th. It is not anticipated that the project in its entirety will not be completed by March 31st, however the possibility of needing an additional construction season does exist. In the event that silt fence is placed prior to November 15th, work with Heavy Equipment can continue past March 31st.

9. The work will occur close to or inside of residential neighborhoods. The Contractor shall coordinate the work to minimize disruption to residents, particularly traffic flow on the premises. The locations of material stockpiles, equipment parking, and equipment operations may be restricted at the direction of the IDNR Project Manager to accommodate residents. Additionally, Contractor shall give 3 days written notice to residents before operations that will result in the generation of large truck traffic, such as hauling off debris or importing concrete or fill materials.
10. The Contractor shall schedule operations and take such precautions that may be necessary to prevent or minimize erosion. Failure to comply with this requirement shall cause the Contractor to be fully responsible for repairing any eroded areas and cleaning up areas or drainage structures that have become silted in or damaged.
11. Silt Fence shall be inspected on a daily basis and at Project Manager's request, damaged silt fence shall be repaired within 2 working days.
12. Contractor to obtain permission from the Village of North Utica prior to hauling materials and equipment on Village roads. Contractor will provide proof of permission to the IDNR Project Manager prior to hauling.

State of Illinois
 Department of Natural Resources
 Office of Mines and Minerals
 Abandoned Mined Lands Reclamation Division

North Utica Drifts
 Mine Reclamation
 AML-GLsE-2009
 La Salle County

Drawn By: L. Murphy Date: 02/04/2021
 Checked By: N. Lowrey Date: 9/2/2021

Summary of Quantities /
General Notes / Location Map
Sheet
2 of 8

AGGREGATE & RIP RAP SCHEDULE

LOCATION/PURPOSE	NRM21624 CA-FILL, CA 3 TONS	NRM21626 CA-FILL, CA 6 TONS	28100809 STONE DUMPED RIP RAP, CLASS A5 TONS	28100813 STONE DUMPED RIP RAP, CLASS A7 TONS	28200200 FILTER FABRIC SQ YD	40200800 AGGREGATE SURFACE COURSE, TYPE B TONS
LOCATION 1 CONSTRUCTION ENTRANCE					69	16
LOCATION 1 V.O.	436	407	50	98	254	
LOCATION 2 CONSTRUCTION ENTRANCE					33	8
LOCATION 2 V.O.	436	407	50	98	254	
LOCATION 3 V.O.		63	19		44	
LOCATION 4 V.O.		29	3		22	
TOTALS	872	906	122	196	676	24

CONCRETE SCHEDULE	
LOCATION/PURPOSE	NRM21661 CLASS SI CONCRETE PLUG CU YD
LOCATION 1 V.O.	47
LOCATION 2 V.O.	47
LOCATION 3 V.O.	12
LOCATION 4 V.O.	4
TOTAL	110

EXCAVATION SCHEDULE

LOCATION/PURPOSE	NRM20211 REMOVAL AND DISPOSAL OF UNSUITABLE MATERIAL TON	NRM20480 FURNISHED EXCAVATION CU YD	21101605 TOPSOIL FURNISH AND PLACE, 2" SQ YD	NRM21510 SPECIAL EXCAVATION CU YD
LOCATION 1 V.O.	140		314	698
LOCATION 2 V.O.				698
LOCATION 3 V.O.				110
LOCATION 4 V.O.				39
LOCATION 1 THRU 4 SHORTAGE		50		
TOTALS	140	50	314	1545

MISCELLANEOUS SCHEDULE

LOCATION	44201692 CLASS D PATCHES, TYPE II, 4 INCH SQ YD	44201694 CLASS D PATCHES, TYPE III, 4 INCH SQ YD	NRM67110 MOBILIZATION L SUM
JOBSITE	250	250	1.0
TOTALS	250	250	1.0

SILT FENCE SCHEDULE

LOCATION	NRM28045 PERIMETER EROSION BARRIER SILT FENCE FOOT
LOCATION 1	650
LOCATION 2 THRU 4	712
TOTALS	1362

SAFETY SCHEDULE

LOCATION/ PURPOSE	NRM66540 TEMPORARY SAFETY FENCE FOOT	NRM66610 MINE OPENING MARKERS EACH
LOCATION 1	189	1
LOCATION 2	189	1
LOCATION 3	96	1
LOCATION 4	63	1
TOTAL	537	4

CLEARING/SEEDING SCHEDULE

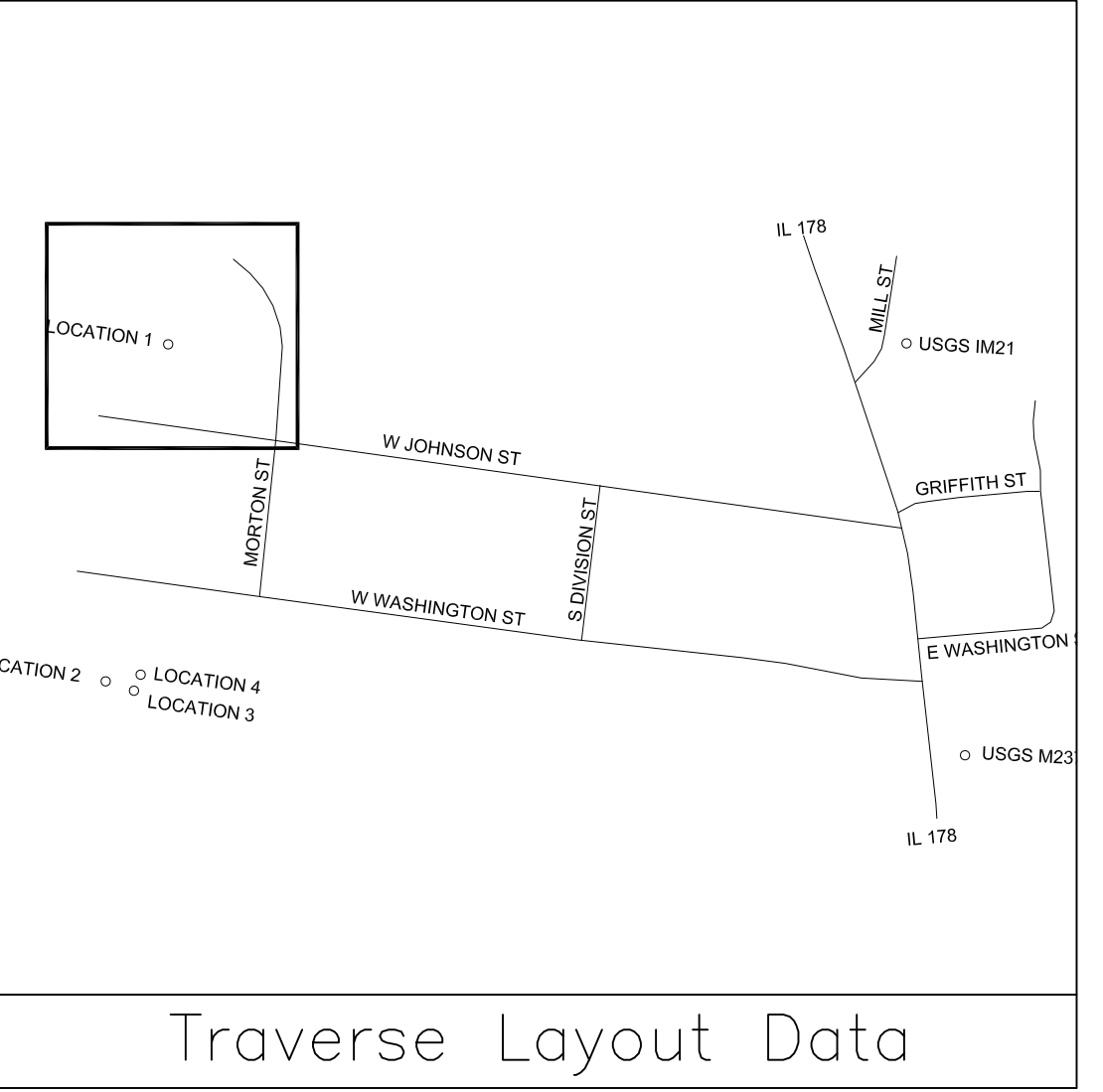
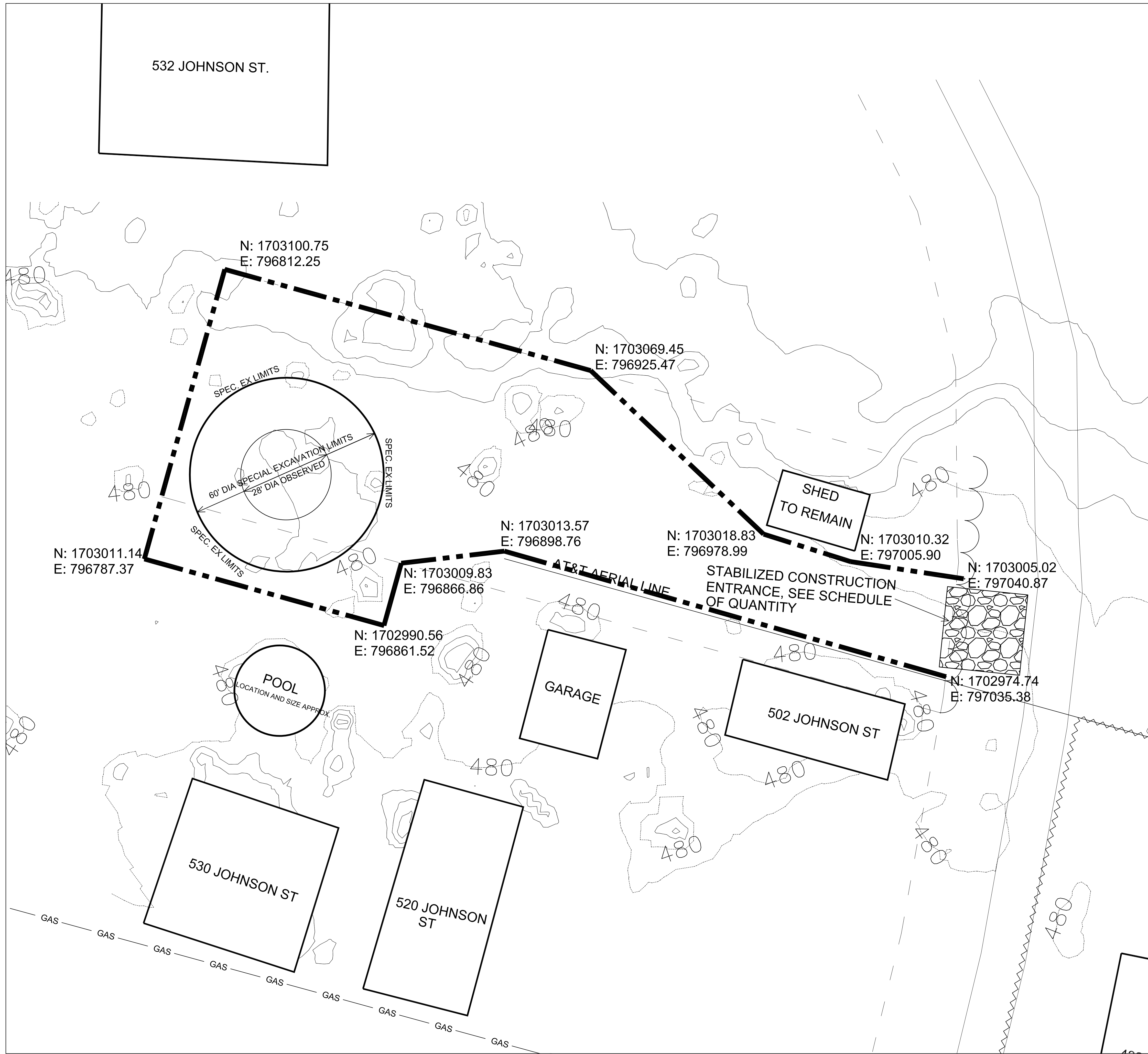
LOCATION(S)	NRM20110 SPECIAL CLEARING L SUM	NRM25040 NITRO FERT. NUTRIENT POUND	NRM25050 PHOS. FERT. NUTRIENT POUND	NRM25060 POT. FERT. NUTRIENT POUND	NRM25070 AG. LIMESTONE TON	NRM25090 SEEDING ACRE	25100115 MULCH, METHOD 2 ACRE
LOCATION 1	0.5	40	47	116	0.7	0.33	0.33
LOCATION 2 THRU 4	0.5	32	38	95	0.5	0.27	0.27
TOTALS	1.0	72	85	211	1.2	0.60	0.60

State of Illinois
Department of Natural Resources
Office of Mines and Minerals
Abandoned Mined Lands Reclamation Division

North Utica Drifts
Mine Reclamation
AML-GLsE-2009
La Salle County

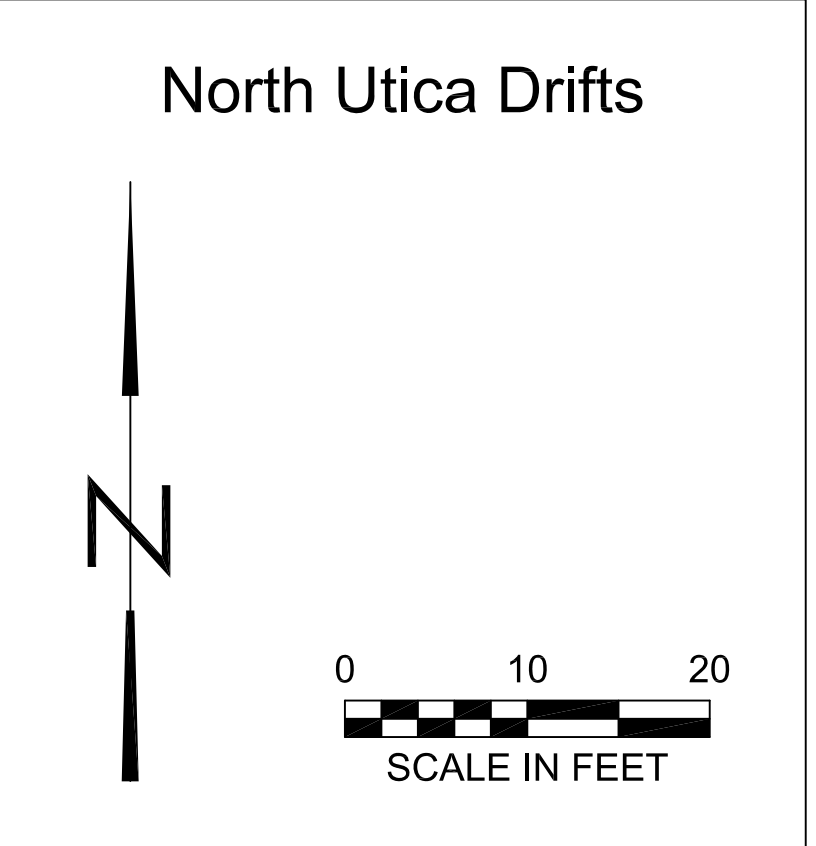
Drawn By: L. Murphy Date: 6/15/2021
Checked By: N. Lowrey Date: 9/2/2021

Schedule of Quantities
Sheet
3 of 8



	400	EXISTING CONTOUR
	400	PROPOSED CONTOUR
		EDGE OF MINE REFUSE
		CONSTRUCTION LIMITS
		EDGE OF ROAD
		TREELINE
		VILLAGE R.O.W.
		AMEREN ELECTRIC

Legend

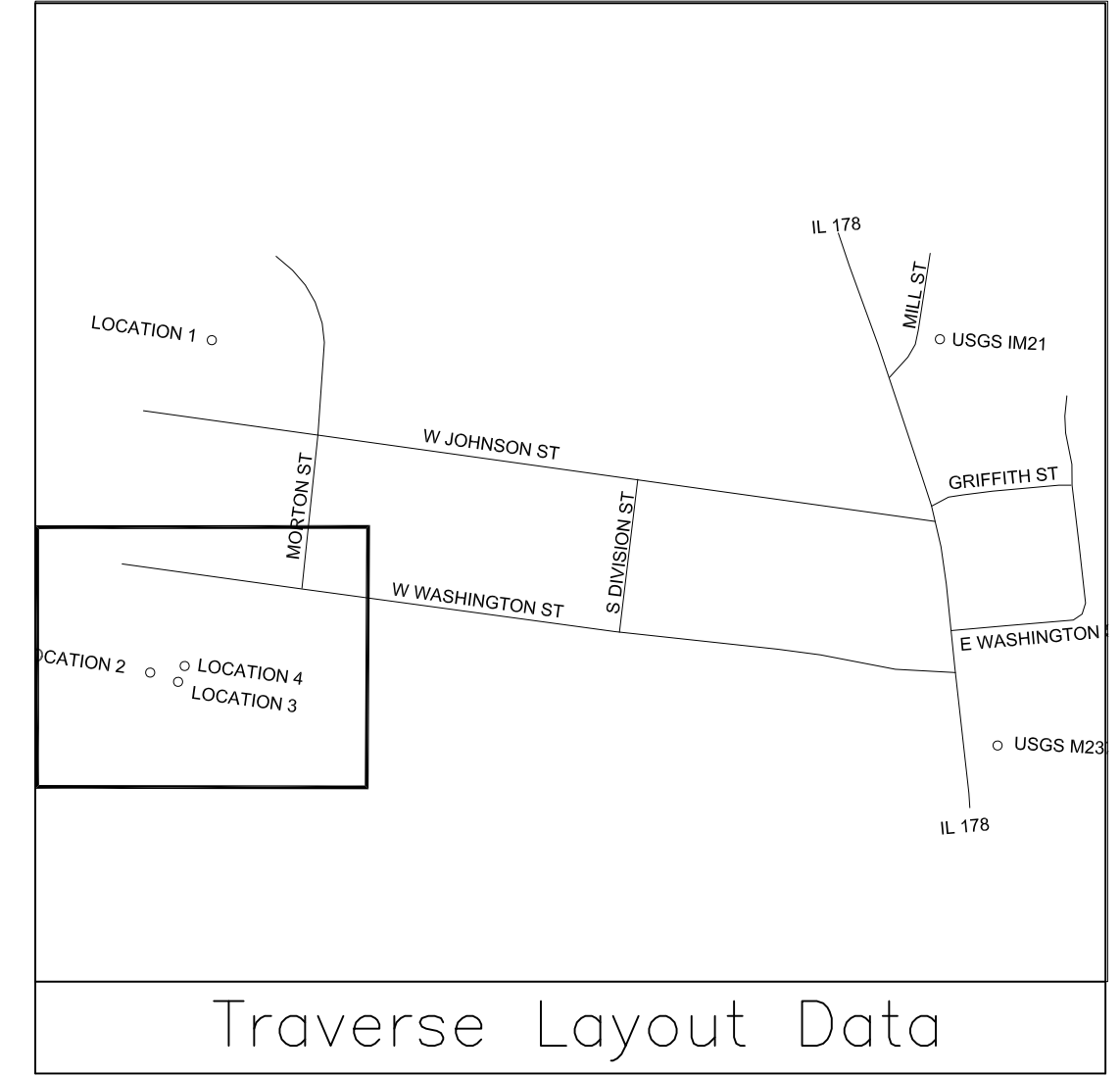
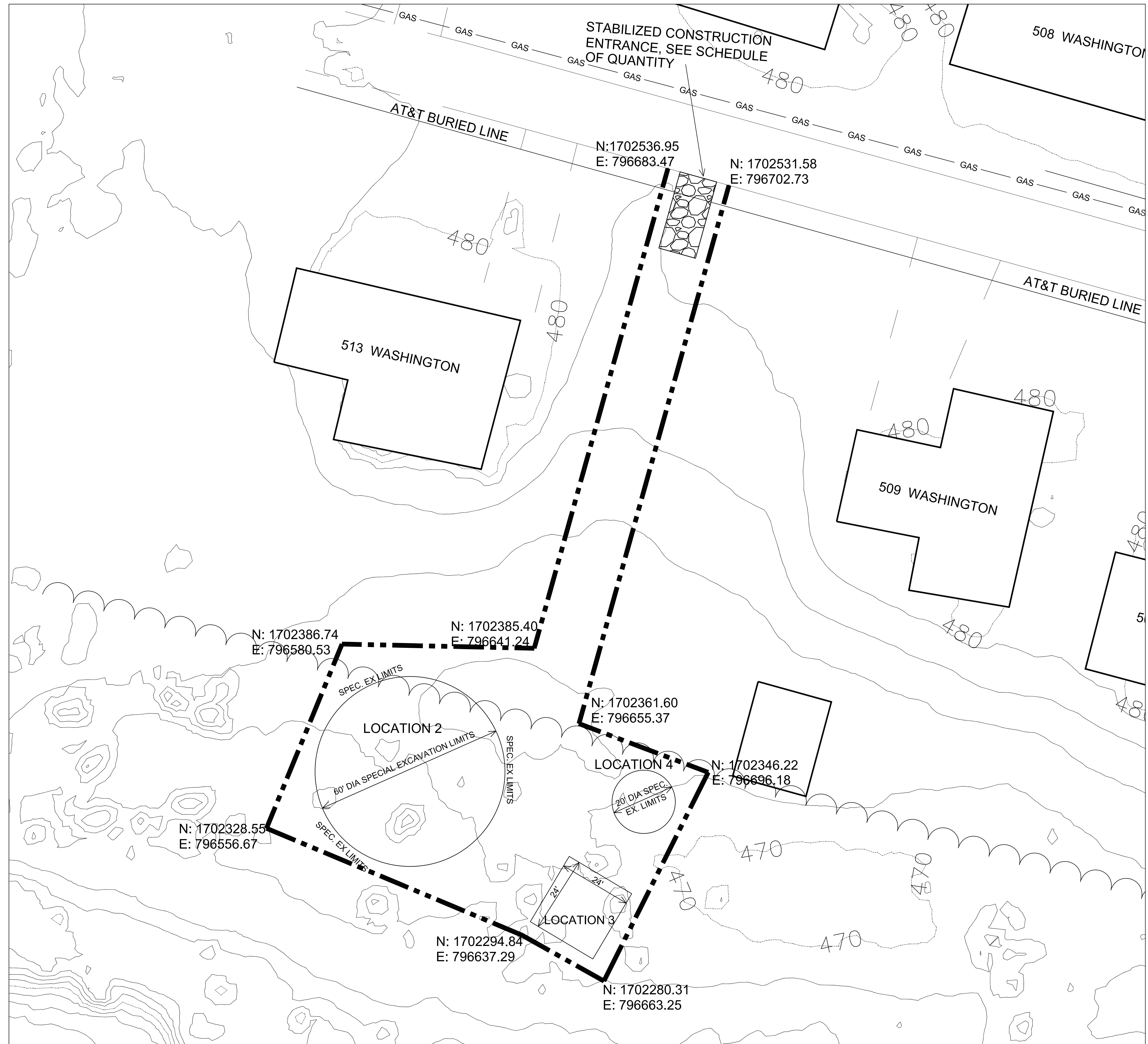


State of Illinois
 Department of Natural Resources
 Office of Mines and Minerals
 Abandoned Mined Lands Reclamation Division

North Utica Drifts
 Mine Reclamation
 AML-GLsE-2009
 LaSalle County

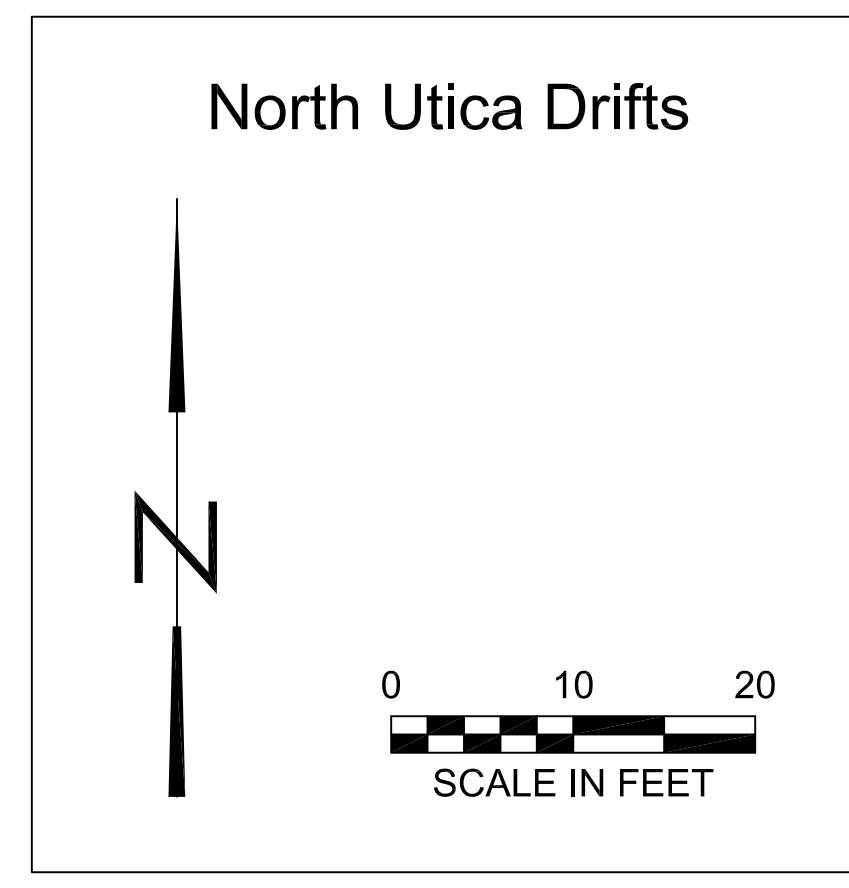
Drawn By: Luke Murphy, PE Date: 3/24/2021
 Checked By: N. Lowrey Date: 9/2/2021

Location 1
 Plan View
 Sheet
 4 of 8



400	EXISTING CONTOUR
400	PROPOSED CONTOUR
	EDGE OF MINE REFUSE
	CONSTRUCTION LIMITS
	EDGE OF ROAD
	TREELINE
	AMEREN ELECTRIC

Legend



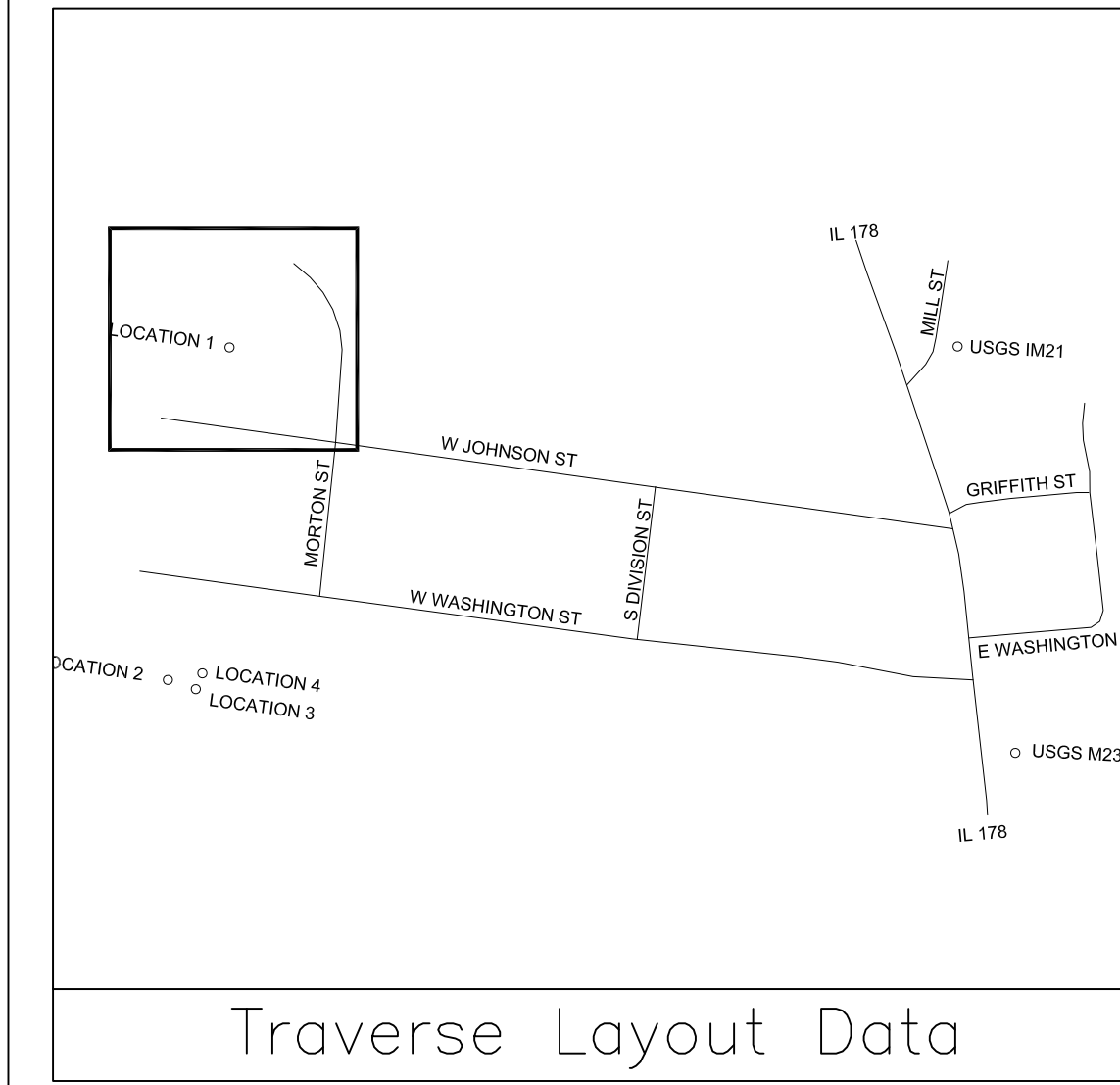
State of Illinois
 Department of Natural Resources
 Office of Mines and Minerals
 Abandoned Mined Lands Reclamation Division

North Utica Drifts
 Mine Reclamation
 AML-GLsE-2009
 LaSalle County

Drawn By: Luke Murphy_PE Date: 3/24/2021
 Checked By: N. Lowrey 9/2/2021

Location(s) 2, 3, & 4
 Plan View
 Sheet
 5 of 8

TREE SCHEDULE			
TREE NO.	SPECIES	LAT	LONG
1	SILVER MAPLE	41° 20' 25.85"	89° 00' 57.43"
2	SILVER MAPLE	41° 20' 25.74"	89° 00' 56.89"

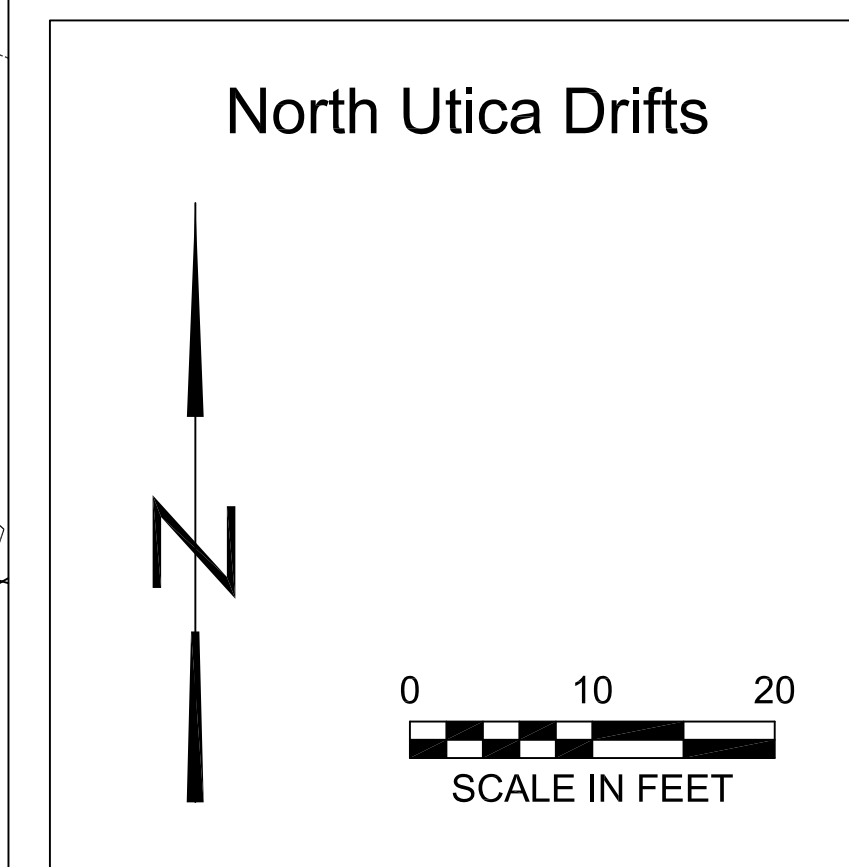
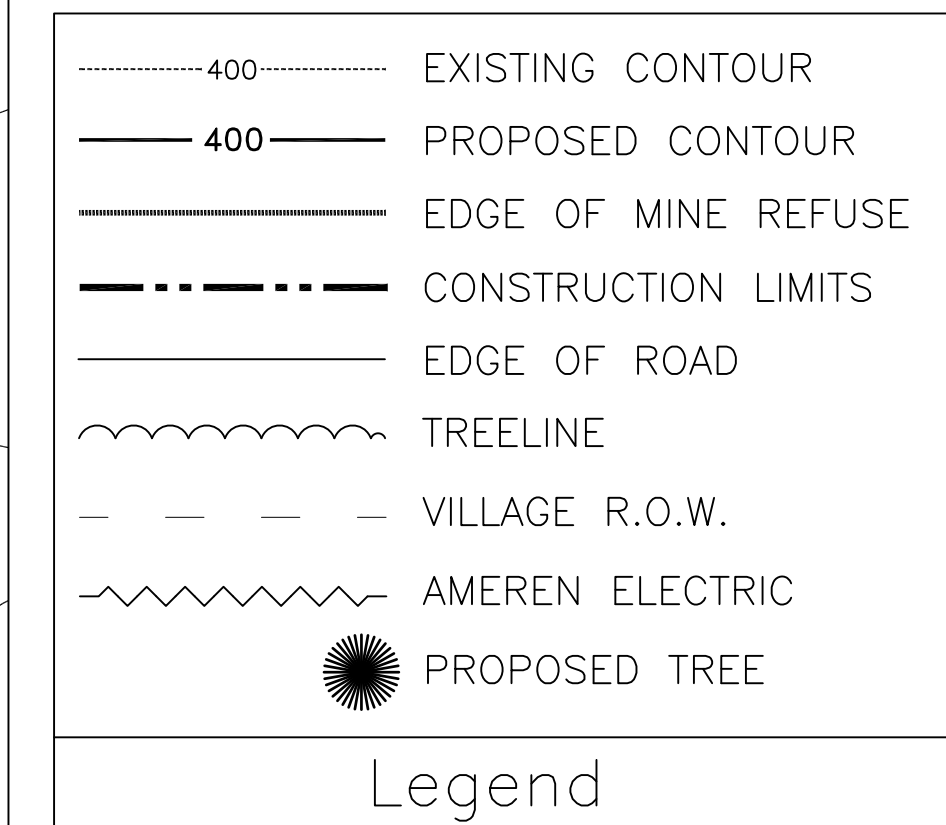
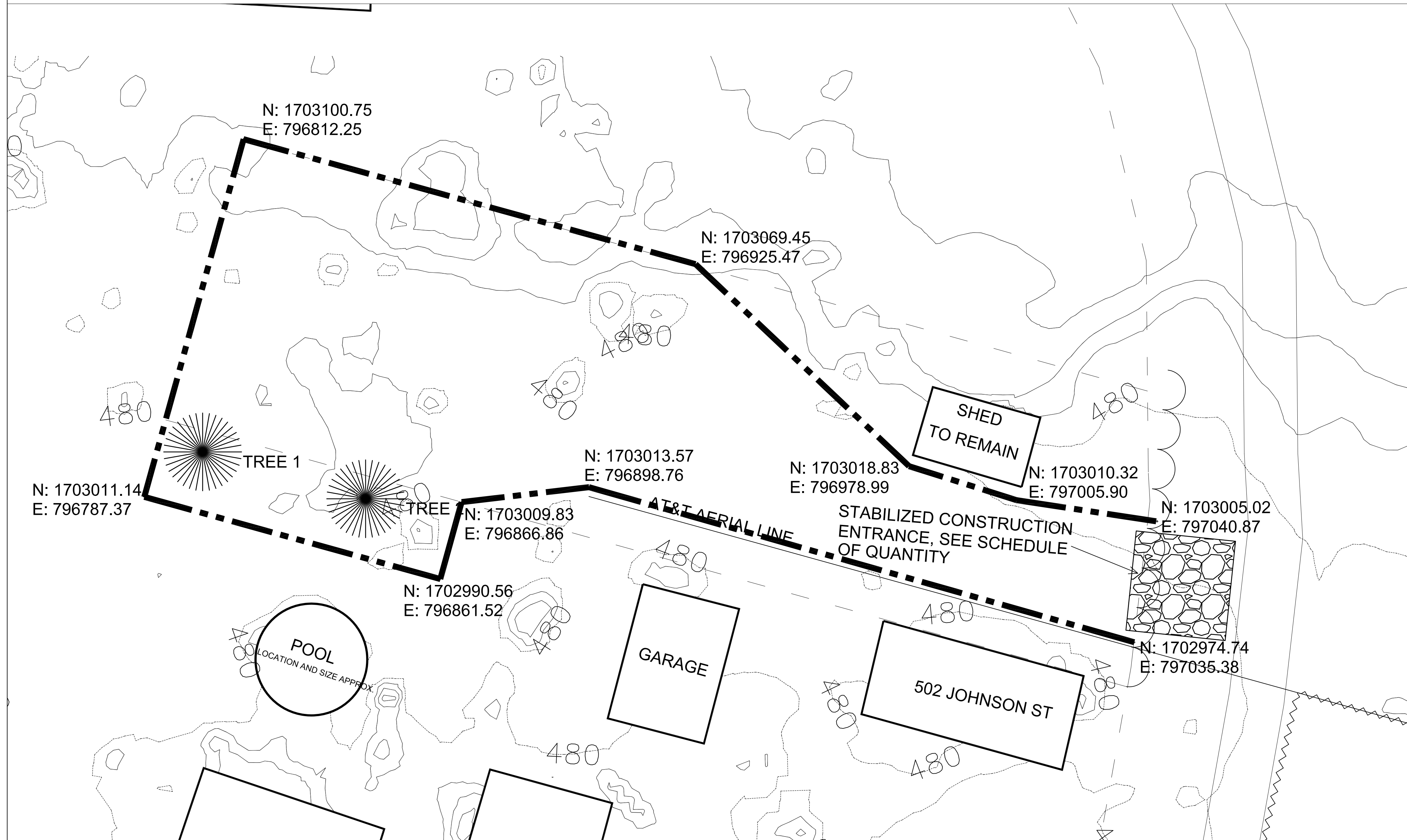


State of Illinois
 Department of Natural Resources
 Office of Mines and Minerals
 Abandoned Mined Lands Reclamation Division

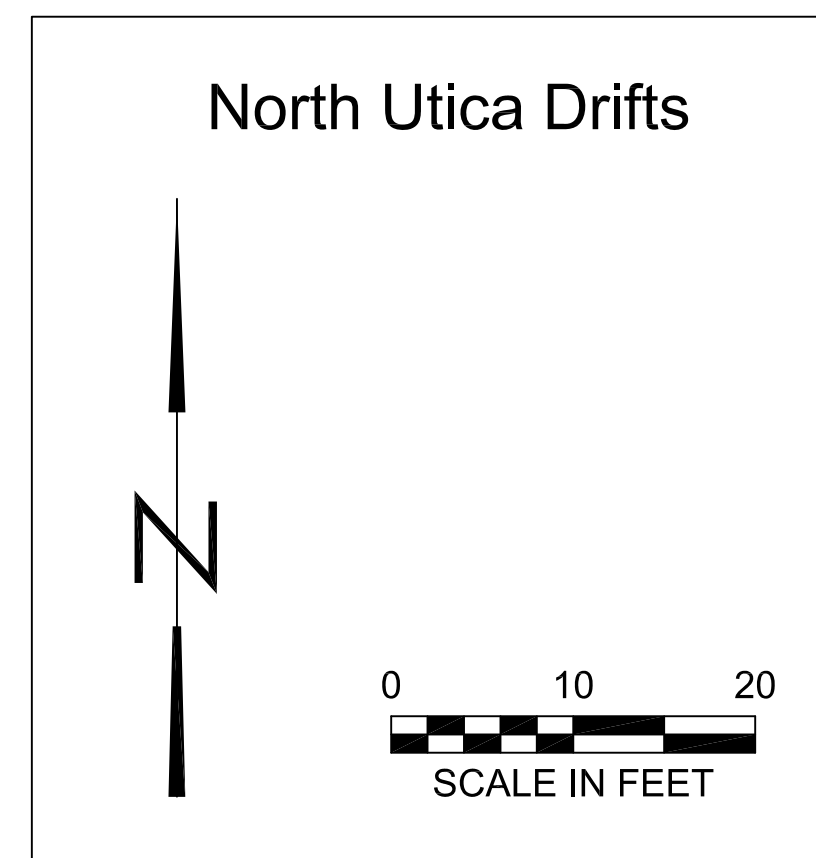
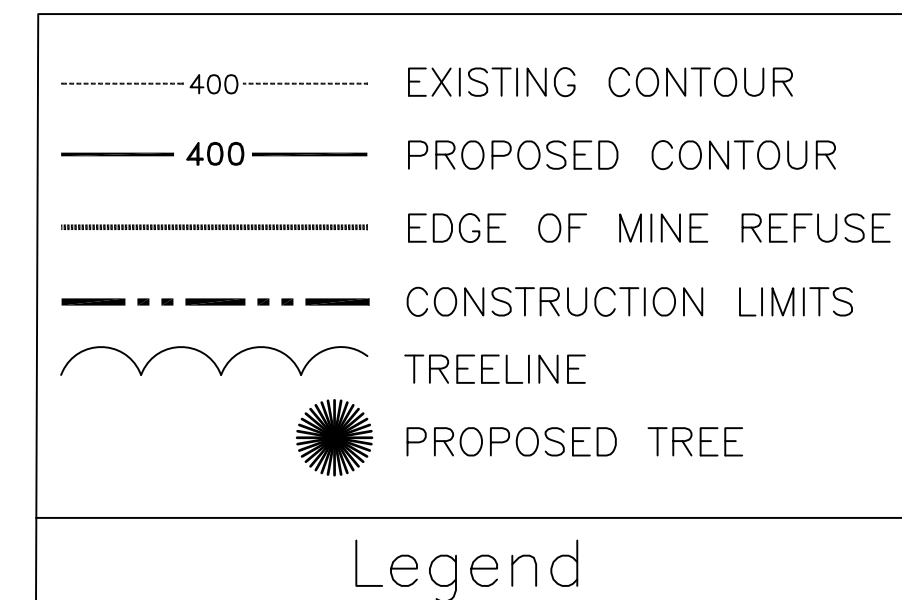
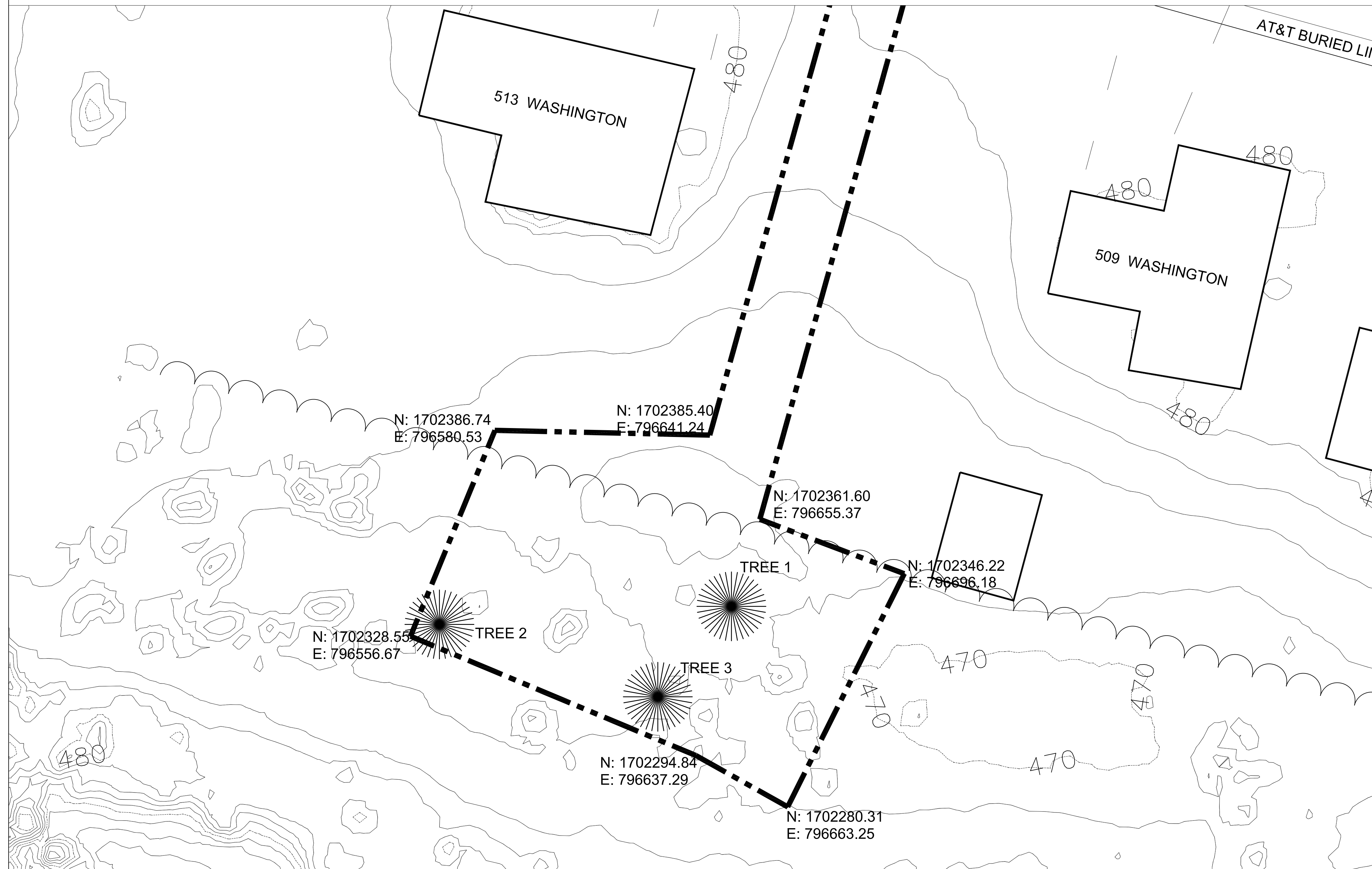
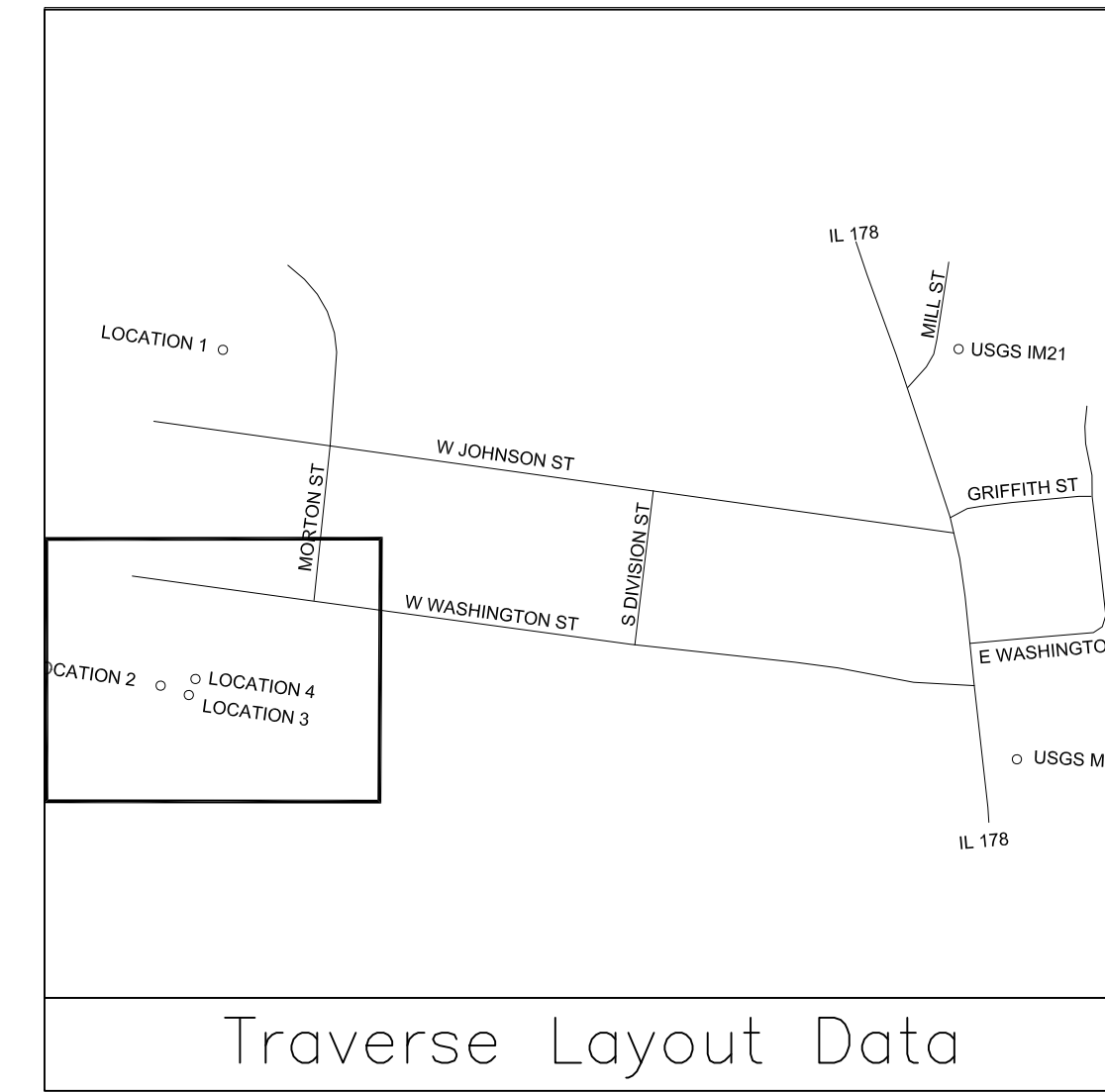
North Utica Drifts
 Mine Reclamation
 AML-GLsE-2009
 LaSalle County

Drawn By: Luke Murphy, PE Date: 3/24/2021
 Checked By: N. Lowrey Date: 9/2/2021

Location 1
 Tree Planting Plan
 Sheet
 6 of 8



TREE SCHEDULE			
TREE NO.	SPECIES	LAT	LONG
1	AMERICAN HOPHORNBEAM	41° 20' 19.07"	89° 00' 59.38"
2	AMERICAN HOPHORNBEAM	41° 20' 19.10"	89° 01' 00.58"
3	AMERICAN HOPHORNBEAM	41° 20' 18.81"	89° 00' 59.65"

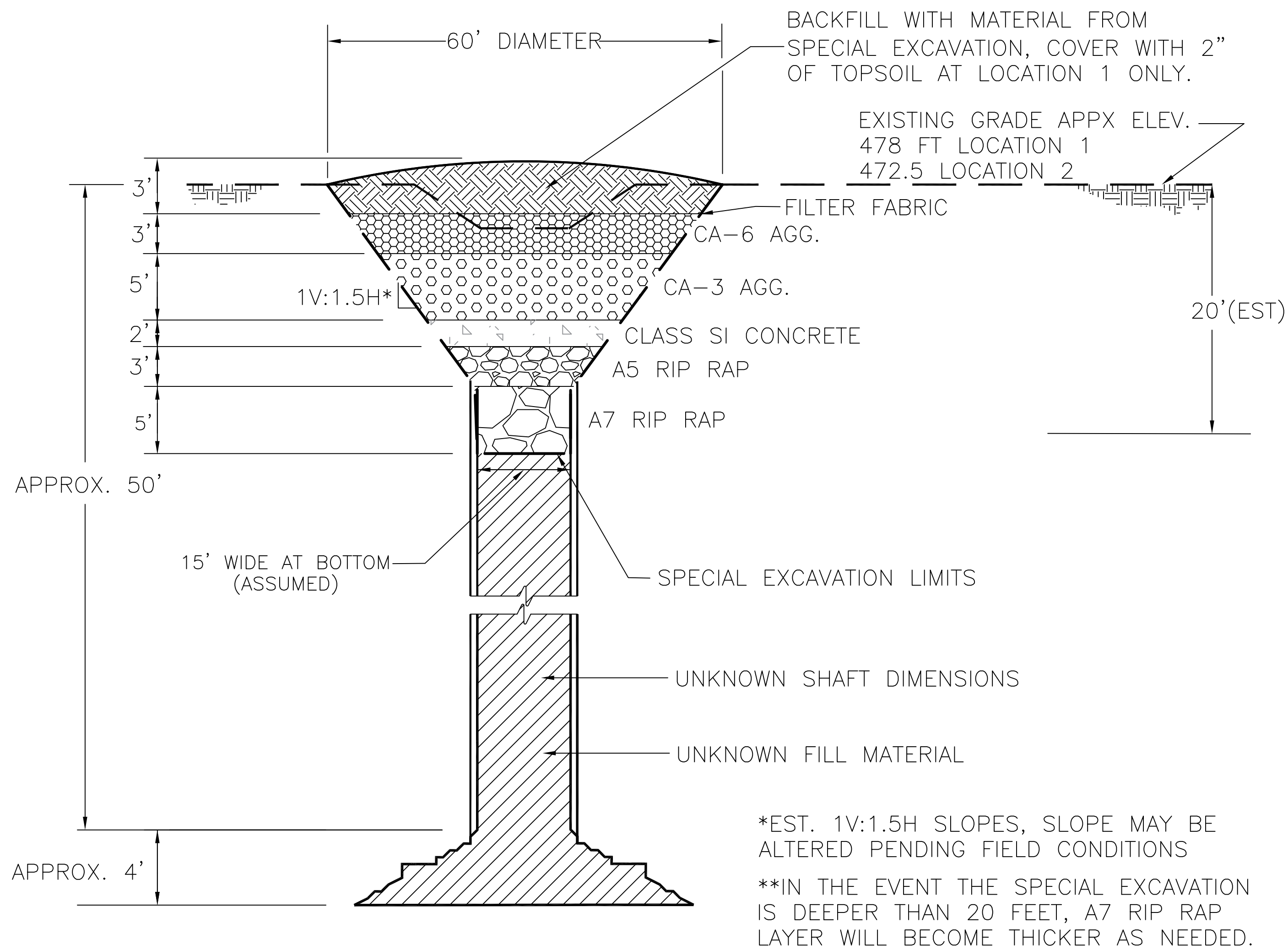


State of Illinois
 Department of Natural Resources
 Office of Mines and Minerals
 Abandoned Mined Lands Reclamation Division

North Utica Drifts
 Mine Reclamation
 AML-GLsE-2009
 LaSalle County

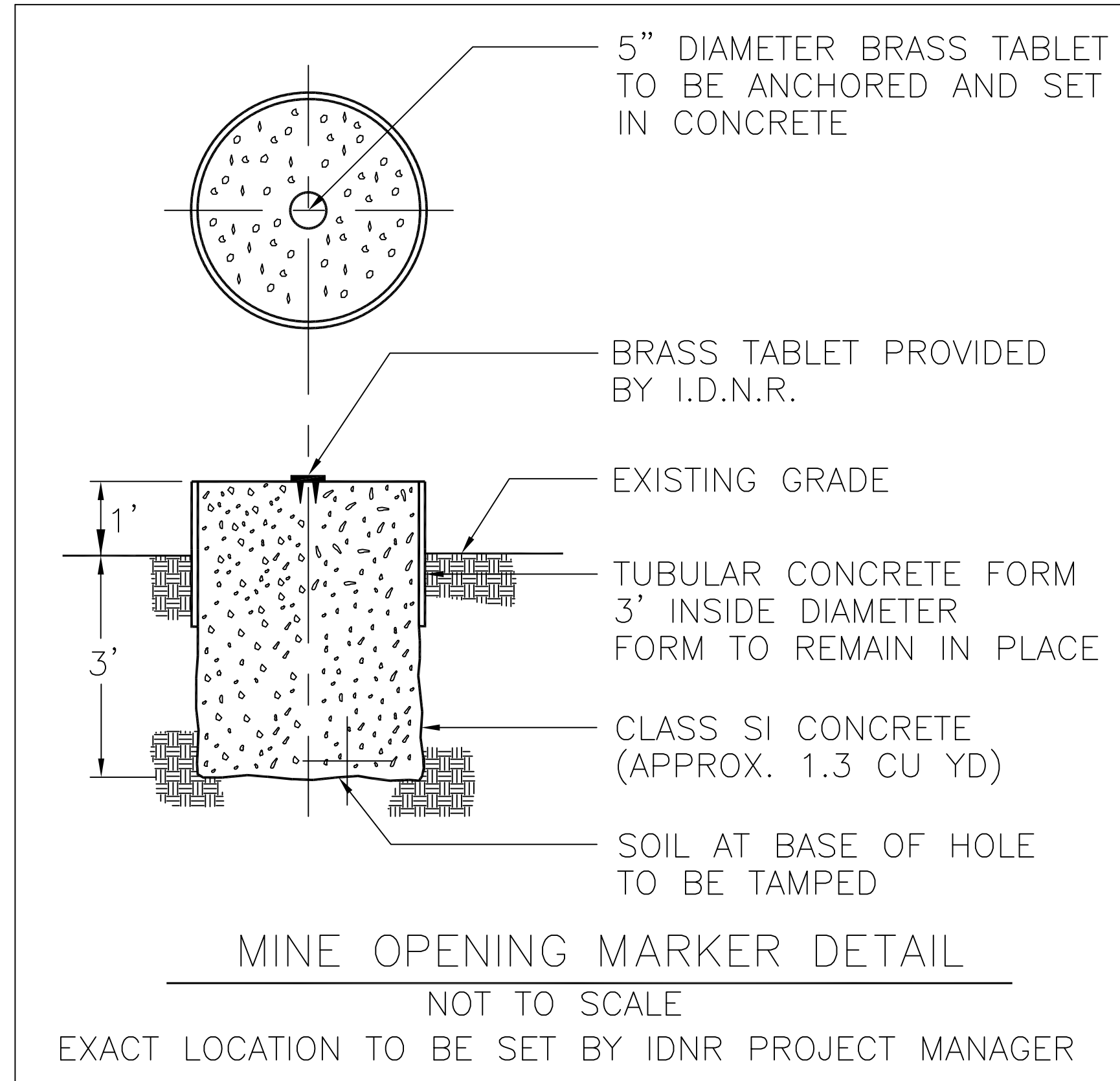
Drawn By: Luke Murphy, PE Date: 4/22/2021
 Checked By: N. Lowrey Date: 9/2/2021

Location(s) 2, 3, & 4
 Tree Planting Plan
 Sheet
 7 of 8



LOCATION 1 AND 2 DETAIL
NOT TO SCALE

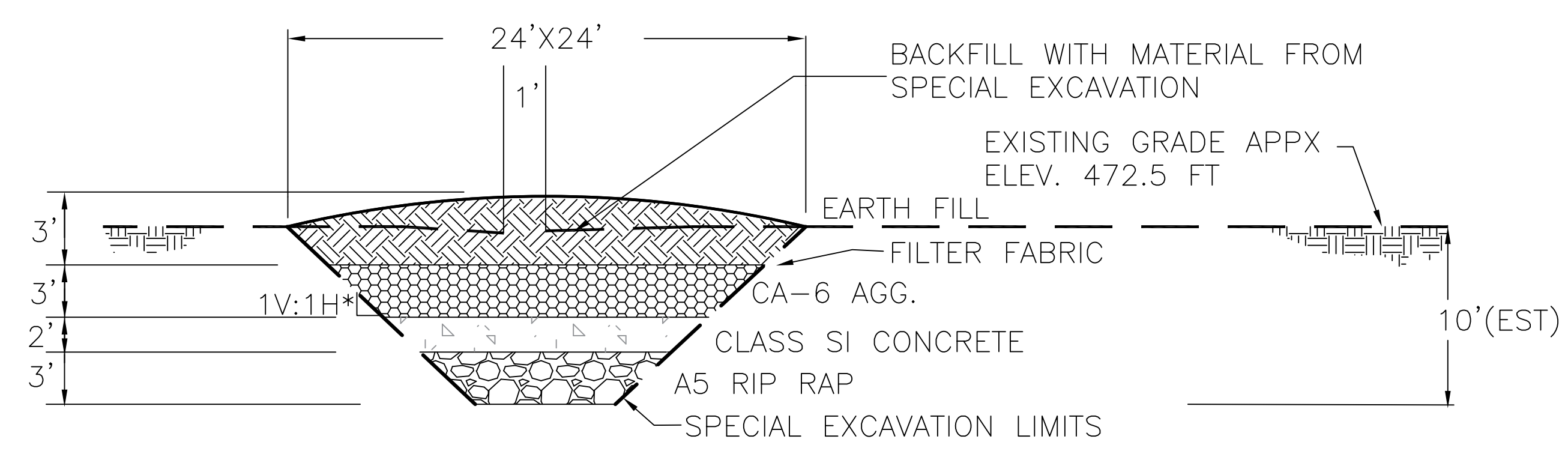
*EST. 1V:1.5H SLOPES, SLOPE MAY BE ALTERED PENDING FIELD CONDITIONS
**IN THE EVENT THE SPECIAL EXCAVATION IS DEEPER THAN 20 FEET, A7 RIP RAP LAYER WILL BECOME THICKER AS NEEDED.



State of Illinois
Department of Natural Resources
Office of Mines and Minerals
Abandoned Mined Lands Reclamation Division

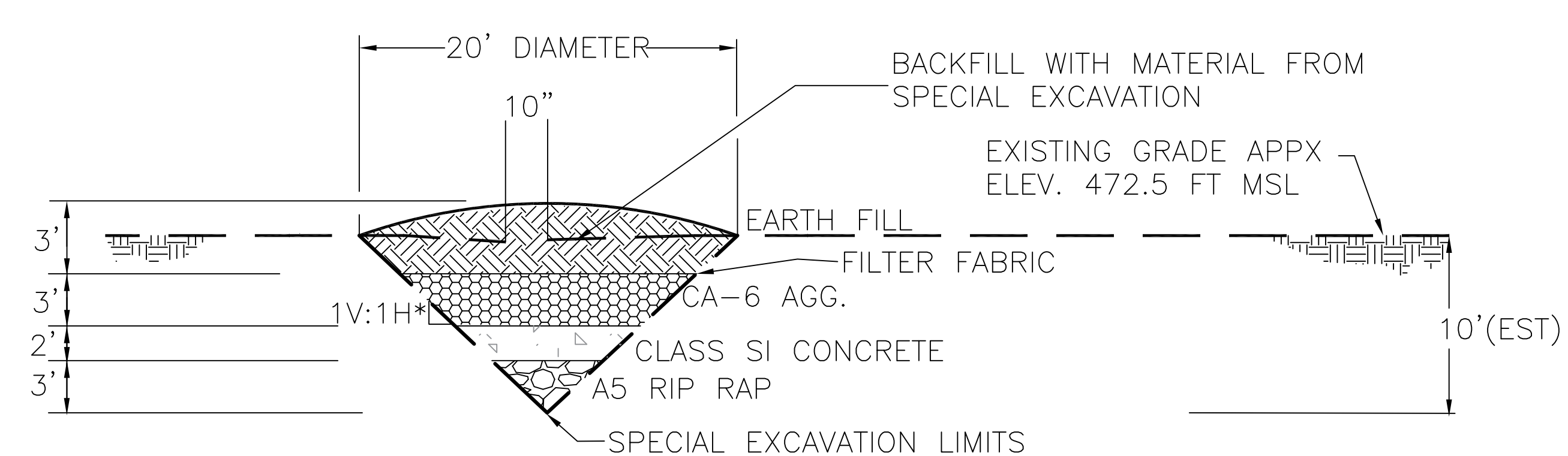
North Utica Drifts
Mine Reclamation
AML-GLsE-2009
LaSalle County

Drawn By: L. Murphy
Checked By: N. Lowrey
Date: 03/05/2021
9/2/2021



LOCATION 3 DETAIL
NOT TO SCALE

*EST. 1V:1H SLOPES, SLOPE MAY BE ALTERED PENDING FIELD CONDITIONS
*ASSUMED 4'x4' AT BOTTOM OF EXCAVATION, IF BOTTOM OF EXCAVATION DIFFERS, FILL AS DIRECTED BY ENGINEER.



LOCATION 4 DETAIL
NOT TO SCALE

*EST. 1V:1H SLOPES, SLOPE MAY BE ALTERED PENDING FIELD CONDITIONS
*ASSUMED CONICAL EXCAVATION, IF EXCAVATION GEOMETRY DIFFERS, FILL AS DIRECTED BY ENGINEER.