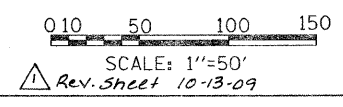


- LEGEND**
- TEMPORARY PAVEMENT { 9" PCC BASE COURSE OR 12" HMA BINDER COURSE
  - ARROW BOARD
  - DRUM OR TYPE II PLASTIC BARRICADE WITH STEADY BURNING LIGHT, 50' C-C ON CURVE/TAPER 100' C-C ON TANGENT
  - WORK ZONE
  - DIRECTION OF TRAFFIC
  - TEMPORARY PAVEMENT MARKING-LINE 4"

**NOTE:**  
 PAVEMENT MARKINGS SHALL BE INSTALLED AT ALL MEDIAN REMOVAL AND TEMPORARY PAVEMENT LOCATIONS. THE PAVEMENT MARKING SHALL CONSIST OF A 4" SOLID YELLOW EDGE LINE ALONG THE LEFT EDGE OF THE INNER LANE



**EARTH TECH | AECOM**

REVISIONS	
NAME	DATE

ILLINOIS DEPARTMENT OF TRANSPORTATION  
 FAP 330 US 12/45 (MANNHEIM RD.) OVER  
 300 LINE RR & FRANKLIN AVE.  
**MAINTENANCE OF TRAFFIC  
 PRE-STAGE**  
 SCALE: 1" = 50'  
 DATE: JULY 8, 2009  
 DRAWN BY: CJO  
 CHECKED BY: PWK

L:\work\53346\cadd\drawings\Roadway\10MOT\prstg.dgn 10/11/2009

MOT-3