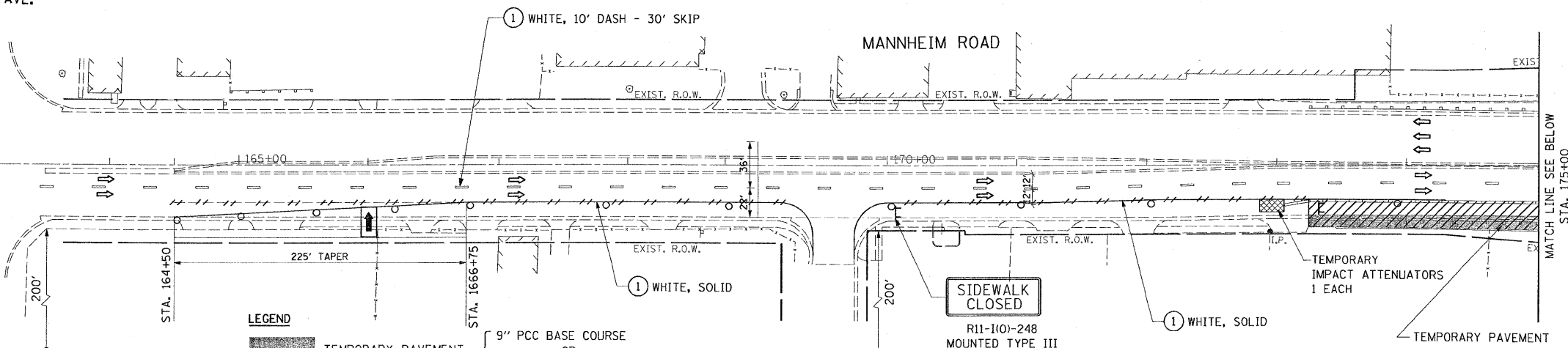
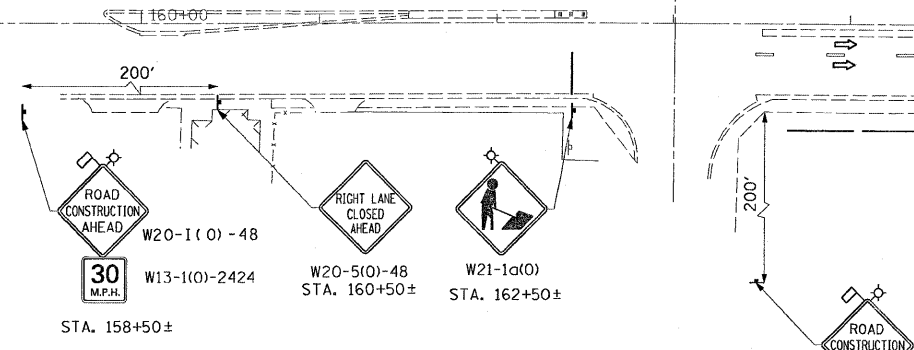
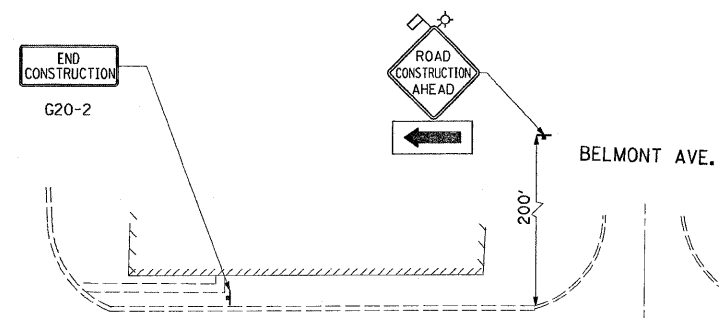
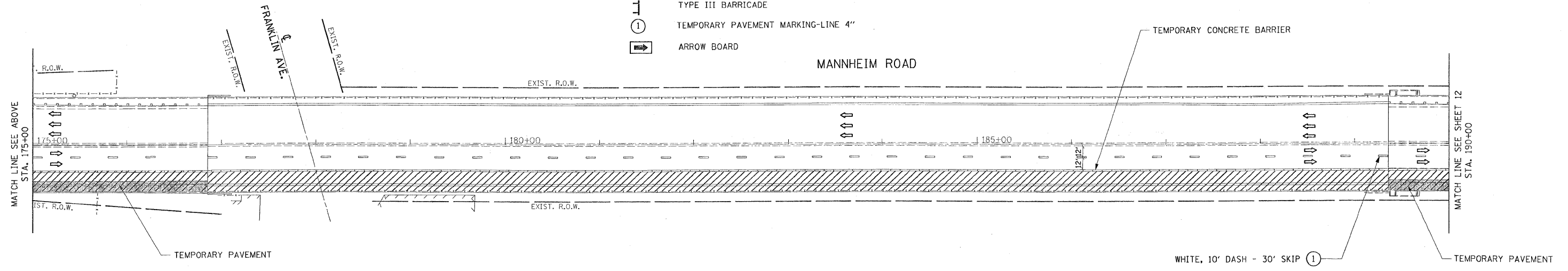


F.A.P. RTE.	SECTION	COUNTY	TOTAL SHEETS	SHEET NO.
330	465 VB-R-1	COOK	103	11
STA.		TO STA.		
FED. ROAD DIST. NO. 1		ILLINOIS FED. AID PROJECT		
CONTRACT NO. 60407				



- LEGEND**
- TEMPORARY PAVEMENT
 - TEMPORARY CONCRETE BARRIER
 - WORK ZONE
 - DIRECTION OF TRAFFIC
 - DRUM OR TYPE II PLASTIC BARRICADE WITH STEADY BURNING LIGHT, 50' C-C ON CURVE/TAPER 100' C-C ON TANGENT
 - TRAFFIC SIGN
 - PAVEMENT MARKING REMOVAL
 - TYPE III BARRICADE
 - TEMPORARY PAVEMENT MARKING-LINE 4"
 - ARROW BOARD



L:\work\53346\cadd\drawings\Roadway\110101\101.dgn 10/1/2009

0 10 50 100 150
SCALE: 1"=50'
Rev. Sheet 10-13-09

EARTH TECH | AECOM

REVISIONS	
NAME	DATE

ILLINOIS DEPARTMENT OF TRANSPORTATION
FAP 330 US 12/45 (MANNHEIM RD.) OVER
500 LINE RR & FRANKLIN AVE.
**MAINTENANCE OF TRAFFIC
STAGE I**
SCALE: 1" = 50'
DATE: JULY 8, 2009
DRAWN BY: CJO
CHECKED BY: PWK

MOT-4