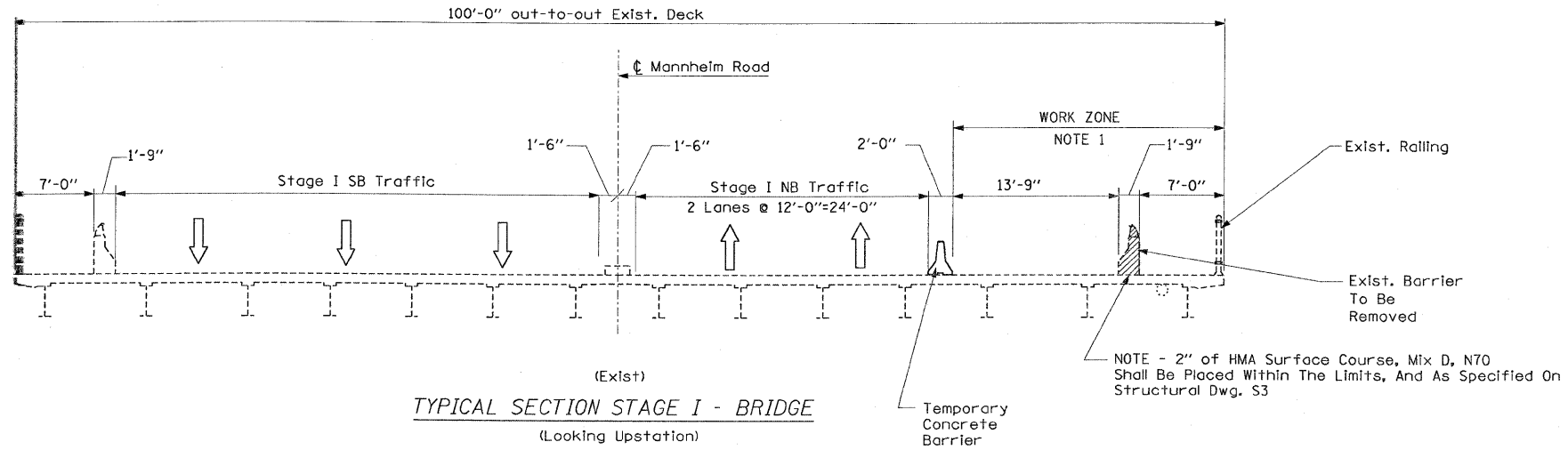
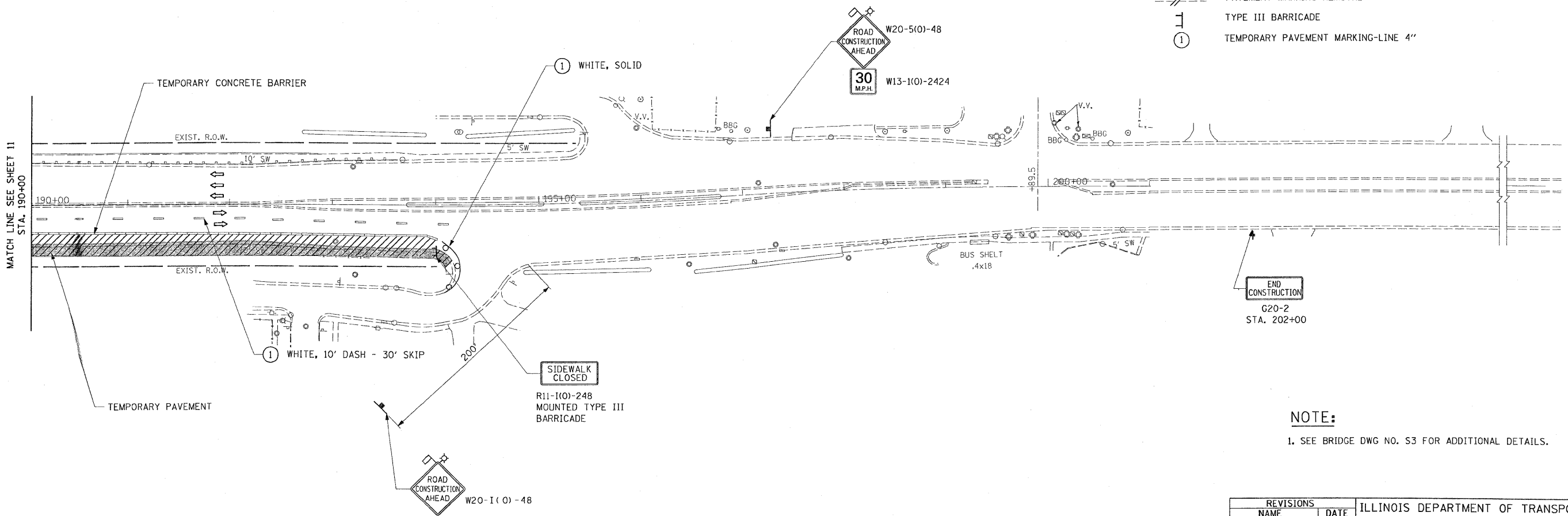


F.A.P. RTE.	SECTION	COUNTY	TOTAL SHEETS	SHEET NO.
330	465 VB-R-1	COOK	103	12
STA.		TO STA.		
FED. ROAD DIST. NO. 1		ILLINOIS	FED. AID PROJECT	
CONTRACT NO. 60407				



- LEGEND**
- TEMPORARY PAVEMENT { 9" PCC BASE COURSE OR 12" HMA BINDER COURSE
 - TEMPORARY CONCRETE BARRIER
 - WORK ZONE
 - DIRECTION OF TRAFFIC
 - DRUM OR TYPE II PLASTIC BARRICADE WITH STEADY BURNING LIGHT, 50' C-C ON CURVE/TAPER 100' C-C ON TANGENT
 - TRAFFIC SIGN
 - PAVEMENT MARKING REMOVAL
 - TYPE III BARRICADE
 - TEMPORARY PAVEMENT MARKING-LINE 4"



NOTE:
1. SEE BRIDGE DWG NO. S3 FOR ADDITIONAL DETAILS.

REVISIONS		ILLINOIS DEPARTMENT OF TRANSPORTATION FAP 330 US 12/45 (MANNHEIM RD.) OVER 500 LINE RR & FRANKLIN AVE. MAINTENANCE OF TRAFFIC STAGE I
NAME	DATE	
		SCALE: 1"= 50' DATE: JULY 8, 2009 DRAWN BY: CJO CHECKED BY: PWK

0 10 50 100 150
SCALE: 1"=50'
Rev. Sheet 10-13-09

EARTH TECH | AECOM

L:\work\53346\cadd\drawings\Roadway\12MOT\stg1.dgn 10/1/2009

MOT-5