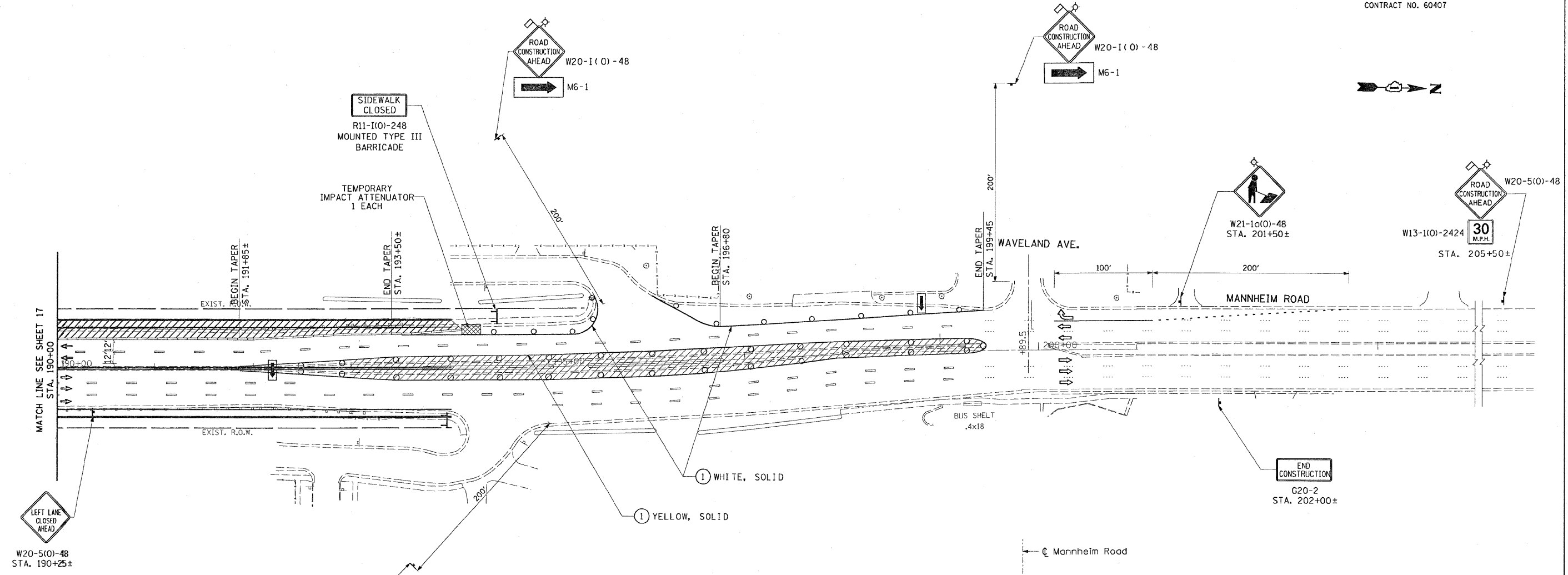
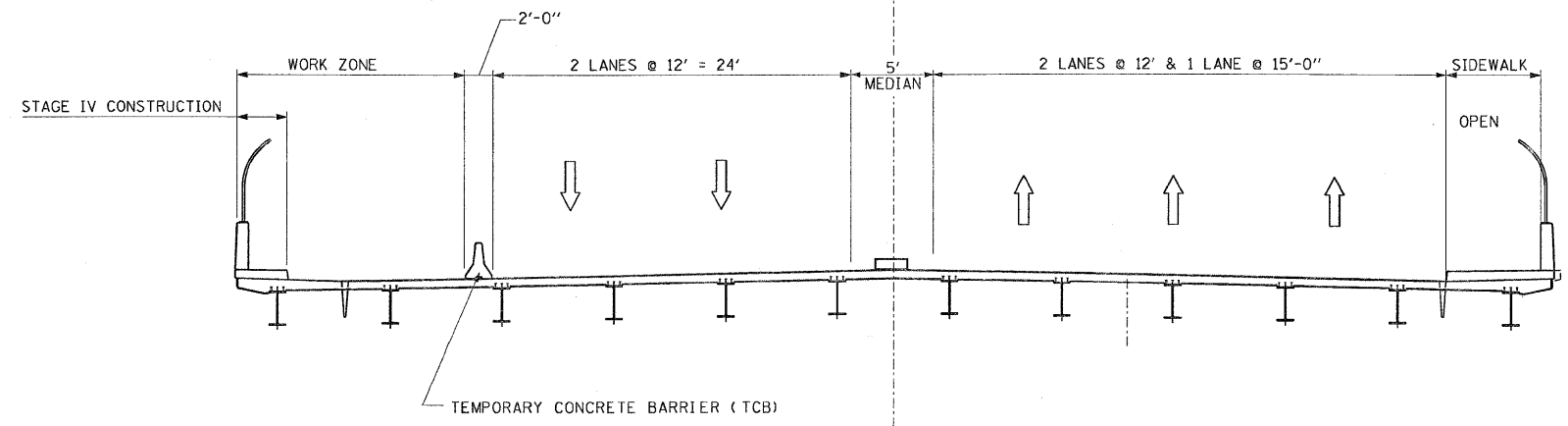


F.A.P. RTE.	SECTION	COUNTY	TOTAL SHEETS	SHEET NO.
330	465 VB-R-1	COOK	103	18
STA.		TO STA.		
FED. ROAD DIST. NO. 1		ILLINOIS FED. AID PROJECT		
CONTRACT NO. 60407				

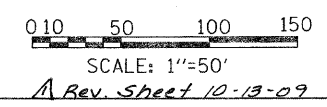


LEGEND

- TEMPORARY PAVEMENT { 9" PCC BASE COURSE OR 12" HMA BINDER COURSE
- TEMPORARY CONCRETE BARRIER
- WORK ZONE
- DIRECTION OF TRAFFIC
- DRUM OR TYPE II PLASTIC BARRICADE WITH STEADY BURNING LIGHT, 50' C-C ON CURVE/TAPER 100' C-C ON TANGENT
- TRAFFIC SIGN
- PAVEMENT MARKING REMOVAL
- TYPE III BARRICADE
- TEMPORARY PAVEMENT MARKING-LINE 4"



STAGE IV
(Looking Upstation)



EARTHTECH | AECOM

REVISIONS	
NAME	DATE

MOT-11
ILLINOIS DEPARTMENT OF TRANSPORTATION
FAP 330 US 12/45 (MANNHEIM RD.) OVER
500 LINE RR & FRANKLIN AVE.
**MAINTENANCE OF TRAFFIC
STAGE IV**
SCALE: 1"= 50'
DATE: JULY 8, 2009
DRAWN BY: CJO
CHECKED BY: FWK

L:\work\53346\cead\drawings\Roadway\18MOT\stg4.dgn 10/11/2009