

SUMMARY OF QUANTITIES

ITEM NO.	PAY ITEM	UNIT	80% FED. 20% STATE URBAN CONSTRUCTION TYPE CODE		
			QUANTITY	ROAD 1000-2A	BRIDGE X571-2A
20101000	TEMPORARY FENCE	FOOT	4230	4230	
20700400	POROUS GRANULAR EMBANKMENT, SPECIAL	CU YD	333.5		333.5
28000400	PERIMETER EROSION BARRIER	FOOT	800	800	
31100300	SUB-BASE GRANULAR MATERIAL, TYPE A 4"	SQ YD	1827	1827	
31200500	STABILIZED SUB BASE - HOT-MIX ASPHALT, 4"	SQ YD	974	974	
40600100	BITUMINOUS MATERIALS (PRIME COAT)	GALLON	456	456	
40600400	MIXTURE FOR CRACKS, JOINTS, AND FLANGEWAYS	TON	1	1	
40601005	HOT-MIX ASPHALT REPLACEMENT OVER PATCHES	TON	1	1	
40603340	HOT-MIX ASPHALT SURFACE COURSE, MIX "D", N70	TON	145	43	102
40603595	POLYMERIZED HOT MIX ASPHALT SURFACE COURSE, MIX "F", N90	TON	43	43	
42001200	PAVEMENT FABRIC	SQ YD	974	974	
42001300	PROTECTIVE COAT	SQ YD	2882	2882	
42001400	BRIDGE APPROACH PAVEMENT (SPECIAL)	SQ YD	654	654	
42001420	BRIDGE APPROACH PAVEMENT CONNECTOR (PCC)	SQ YD	974	974	
42400200	PORTLAND CEMENT CONCRETE SIDEWALK 5 INCH	SQ FT	13636	13636	
44000100	PAVEMENT REMOVAL	SQ YD	967	967	
44000500	COMBINATION CURB AND GUTTER REMOVAL	FOOT	4690	4690	
44000600	SIDEWALK REMOVAL	SQ FT	12998	12998	
44000700	APPROACH SLAB REMOVAL	SQ YD	508	508	
44002206	HOT-MIX ASPHALT REMOVAL OVER PATCHES, 1/2"	SQ YD	300	300	
44003100	MEDIAN REMOVAL	SQ FT	7578	7578	
44201353	CLASS C PATCHES, TYPE II, 10 INCH	SQ YD	20	20	
44201357	CLASS C PATCHES, TYPE III, 10 INCH	SQ YD	30	30	
44201359	CLASS C PATCHES, TYPE IV, 10 INCH	SQ YD	80	80	
44201765	CLASS D PATCHES, TYPE II, 10 INCH	SQ YD	20	20	
44201769	CLASS D PATCHES, TYPE III, 10 INCH	SQ YD	30	30	
44201771	CLASS D PATCHES, TYPE IV, 10 INCH	SQ YD	80	80	
44300200	STRIP REFLECTIVE CRACK CONTROL TREATMENT	FOOT	2242	2242	
50100200	REMOVAL OF EXISTING STRUCTURES	L SUM	1		1
50157300	PROTECTIVE SHIELD	SQ YD	6327		6327
50200100	STRUCTURE EXCAVATION	CU YD	4145		4145
50300225	CONCRETE STRUCTURES	CU YD	4002		4002
50300255	CONCRETE SUPERSTRUCTURE	CU YD	3996		3996
50300260	BRIDGE DECK GROOVING	SQ YD	10640		10640
50300280	CONCRETE ENCASEMENT	CU YD	24		24
50300300	PROTECTIVE COAT	SQ YD	14843		14843
50500305	ERECTING STRUCTURAL STEEL	L SUM	1		1
50500505	STUD SHEAR CONNECTORS	EACH	47796		47796
50800205	REINFORCEMENT BARS, EPOXY COATED	POUND	1,486,530		1,486,530
50800515	BAR SPLICERS	EACH	5578		5578
50901730	BRIDGE FENCE RAILING	FOOT	2490		2490
51100100	SLOPE WALL 4 INCH	SQ YD	693		693

LEGEND

- Special Provision
- Δ Non-Participating

ITEM NO.	PAY ITEM	UNIT	80% FED. 20% STATE URBAN CONSTRUCTION TYPE CODE		
			QUANTITY	ROAD 1000-2A	BRIDGE X571-2A
51201400	FURNISHING STEEL PILES HP10X42	FOOT	2672		2672
51201800	FURNISHING STEEL PILES HP14X73	FOOT	8600		8600
51202305	DRIVING PILES	FOOT	11272		11272
51203400	TEST PILE STEEL HP10X42	EACH	2		2
51203800	TEST PILE STEEL HP14X73	EACH	4		4
51205200	TEMPORARY SHEET PILING	SQ FT	3886		3886
51500100	NAME PLATES	EACH	1		1
52000110	PREFORMED JOINT STRIP SEAL	FOOT	200		200
52100010	ELASTOMERIC BEARING ASSEMBLY, TYPE I	EACH	96		96
52100020	ELASTOMERIC BEARING ASSEMBLY, TYPE II	EACH	72		72
52100520	ANCHOR BOLTS, 1"	EACH	312		312
52100540	ANCHOR BOLTS, 1/2"	EACH	96		96
55039700	STORM SEWERS TO BE CLEANED	FOOT	400	400	
58700300	CONCRETE SEALER	SQ FT	12792		12792
59100100	GEOCOMPOSITE WALL DRAIN	SQ YD	133		133
60109580	PIPE UNDERDRAINS FOR STRUCTURES 4"	FOOT	207		207
60300105	FRAMES AND GRATES TO BE ADJUSTED	EACH	6	6	
60300305	FRAMES AND LIDS TO BE ADJUSTED	EACH	7	7	
60605000	COMBINATION CONCRETE CURB AND GUTTER, TYPE B-6.24	FOOT	1433	1433	
60605900	COMBINATION CONCRETE CURB AND GUTTER, TYPE B-9.12	FOOT	1980	1980	
60618300	CONCRETE MEDIAN SURFACE, 4 INCH	SQ FT	7365	7365	
60620800	CONCRETE MEDIAN, TYPE SB-9.12	SQ FT	2312	2312	
63200310	GUARDRAIL REMOVAL	FOOT	1515	1515	
67000400	ENGINEER'S FIELD OFFICE, TYPE A	CAL MO	24	24	
67100100	MOBILIZATION	L SUM	1	1	
70101800	TRAFFIC CONTROL AND PROTECTION, (SPECIAL)	L SUM	1	1	
70103815	TRAFFIC CONTROL SURVEILLANCE	CAL DA	480	480	
70106800	CHANGEABLE MESSAGE SIGN	CAL MO	24	24	
70300100	SHORT-TERM PAVEMENT MARKING	FOOT	8200	8200	
70300220	TEMPORARY PAVEMENT MARKING - LINE 4"	FOOT	21538	13568	7970
70300500	PAVEMENT MARKING TAPE, TYPE III	FOOT	8200	8200	
70301000	WORK ZONE PAVEMENT MARKING REMOVAL	SQ FT	7560	4083	3477
70400100	TEMPORARY CONCRETE BARRIER	FOOT	6800	2270	4530
70400200	RELOCATE TEMPORARY CONCRETE BARRIER	FOOT	6800	2270	4530
78000200	THERMOPLASTIC PAVEMENT MARKING - LINE 4"	FOOT	2763	2763	
78003110	PREFORMED PLASTIC PAVEMENT MARKING, TYPE B - LINE 4"	FOOT	5937		5937
78100100	RAISED REFLECTIVE PAVEMENT MARKER	EACH	104	104	
78100105	RAISED REFLECTIVE PAVEMENT MARKER (BRIDGE)	EACH	144		144
78200100	MONODIRECTIONAL PRISMATIC BARRIER REFLECTOR	EACH	131	39	92
X0320870	BRACED EXCAVATION	CU YD	919.9		919.9
X0322256	TEMPORARY INFORMATION SIGNING	SQ FT	438	438	
X0323080	DRAINAGE SCURPPERS, DS-12	EACH	16		16
X0323988	TEMPORARY SOIL RETENTION SYSTEM	SQ FT	825		825
66900200	NON-SPECIAL WASTE DISPOSAL	CU YD	2,800	2,800	
66900450	SPECIAL WASTE PLANS AND REPORT	L SUM	1	1	
66900530	SOIL DISPOSAL ANALYSIS	EACH	2	2	

○ Specialty Items

Rev. 10-13-09



REVISIONS	
NAME	DATE

ILLINOIS DEPARTMENT OF TRANSPORTATION
 FAP 330 US 12/45 (MANNHEIM RD.) OVER
 500 LINE RR & FRANKLIN AVE.

SUMMARY OF QUANTITIES

SCALE: DATE: JULY 8, 2009

DRAWN BY: CJO
 CHECKED BY: PWK

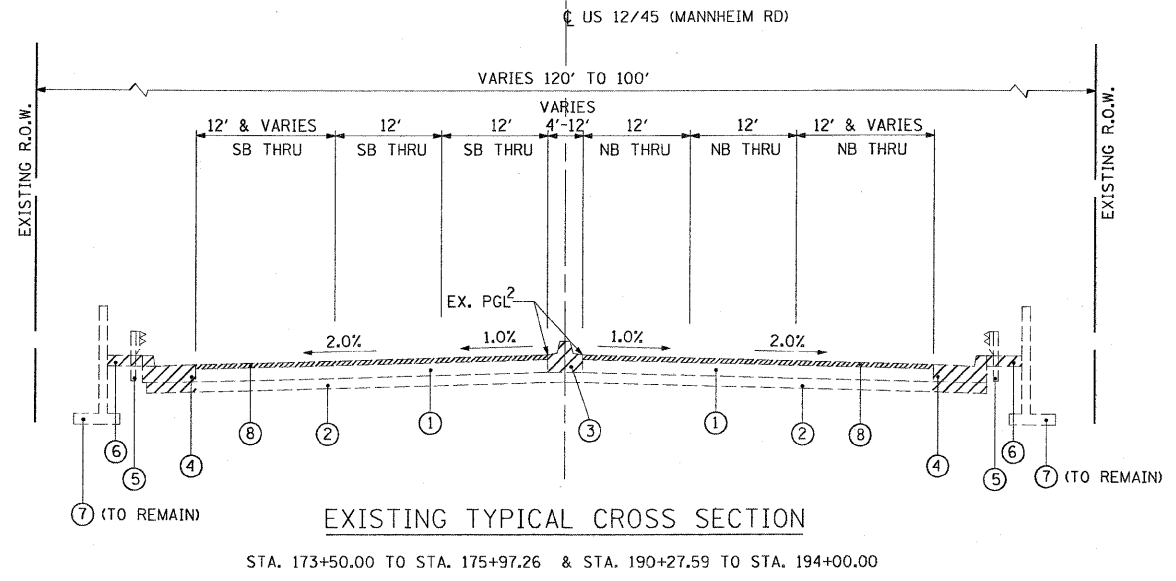
L:\WORK\53346\cadd\drawings\Roadway\03quant.tty.dgn 7/8/2009

LEGEND - EXISTING

- ① PCC PAVEMENT, 10"±
- ② SUB-BASE GRANULAR MATERIAL, TYPE A, 6"±
- ③ MEDIAN REMOVAL
- ④ COMB. CURB & GUTTER REMOVAL
- ⑤ GUARDRAIL REMOVAL
- ⑥ SIDEWALK REMOVAL VARIES FROM 6'-5" TO 12'-5"
- ⑦ RETAINING WALL
- ⑧ PCC SURFACE REMOVAL (COLD MILLING) 1-3/4"
- ▨ REMOVAL ITEM¹

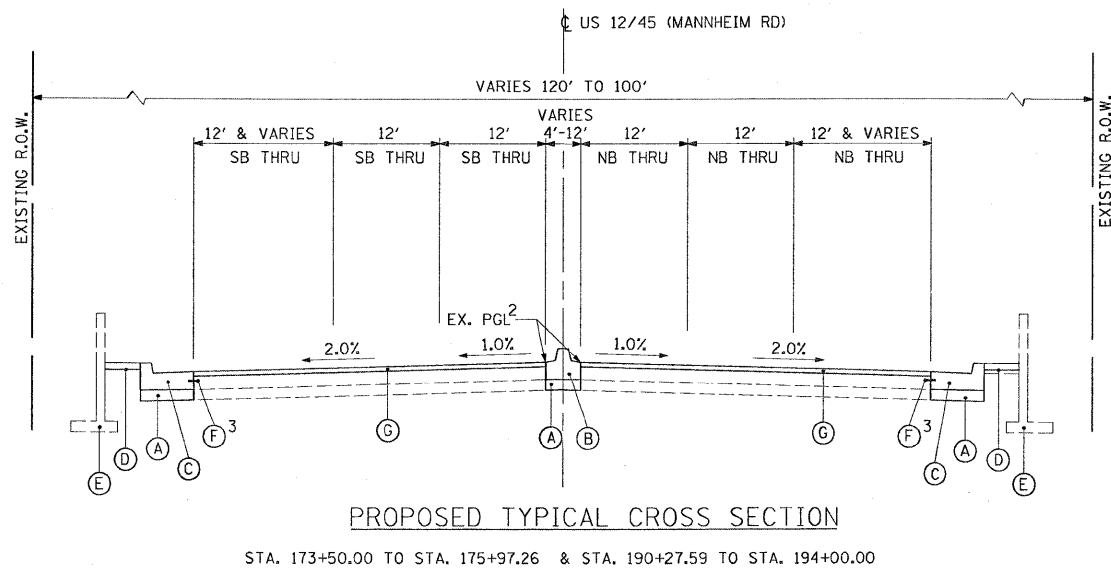
LEGEND - PROPOSED

- (A) SUB-BASE GRANULAR MATERIAL, TYPE A, 4"
- (B) CONCRETE MEDIAN, TYPE SB-9.12
- (C) COMB. CONCRETE CURB & GUTTER, TYPE B-6.24
- (D) PCC SIDEWALK, 5" (VARIES FROM 6' - 5" TO 12' - 5")
- (E) EXISTING RETAINING WALL TO REMAIN IN PLACE
- (F) TIE BARS NO. 4 @ 2' C-C
- (G) HOT - MIX ASPHALT SURFACE COURSE, MIX "D", N70 (1 3/4")



EXISTING TYPICAL CROSS SECTION

STA. 173+50.00 TO STA. 175+97.26 & STA. 190+27.59 TO STA. 194+00.00



PROPOSED TYPICAL CROSS SECTION

STA. 173+50.00 TO STA. 175+97.26 & STA. 190+27.59 TO STA. 194+00.00

Operation	Item Description (Mix Type)	Air Voids	Thickness
Pavement & Resurfacing	HOT MIX ASPHALT SURFACE COURSE, MIX "D", N70 (IL-9.5mm)	4% @ 70 Gyr	1 3/4" - 2"
Stabilized Sub base	Stabilized Sub base - Hot Mix Asphalt 4" (Stabilized Sub base HMA BAM)	2% @ 30 Gyr	4"
Patching	CLASS D Patches Type X 10 INCH (HMA Binder IL-19mm)	4% @ 70 Gyr	10"
Patching	HMA replacement over Patches (HMA Binder IL-19mm)	4% @ 70 Gyr	See plan
Temporary Pavement	Temporary Pavement 12" (HMA Binder IL-19mm)	4% @ 70 Gyr	See Plan

* BRIDGE SIDEWALK

Note:
The Unit Weight used to calculate all HMA surface Mixtures is 112 LBS/SQ YD/IN
When RAP Exceeds 20% The new asphalt Binder in the Mix shall be PG 58-22

NOTES:

1. FOR LOCATIONS, SEE ROADWAY PLAN.
2. EX. PGL IS AT EDGE OF MEDIAN
3. TIE BARS SHALL BE DRILLED & GROUTED INTO EXISTING PCC PAVEMENT. COST SHALL BE INCLUDED IN THE COST OF CURB & GUTTER.

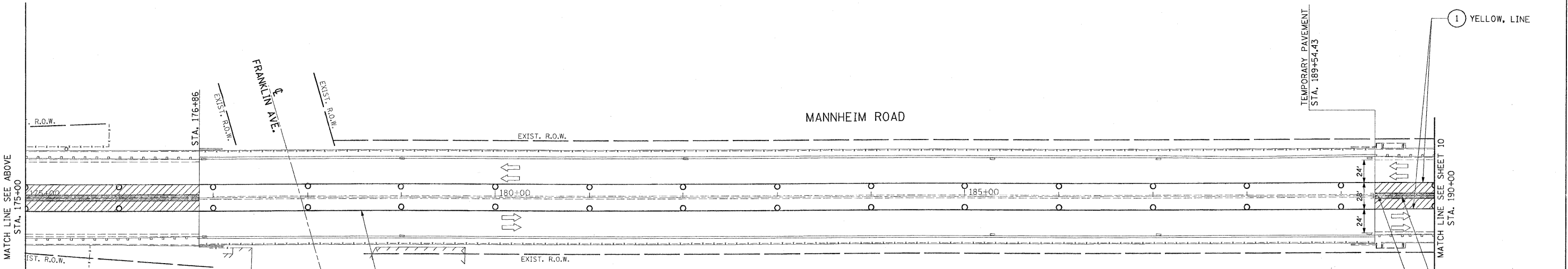
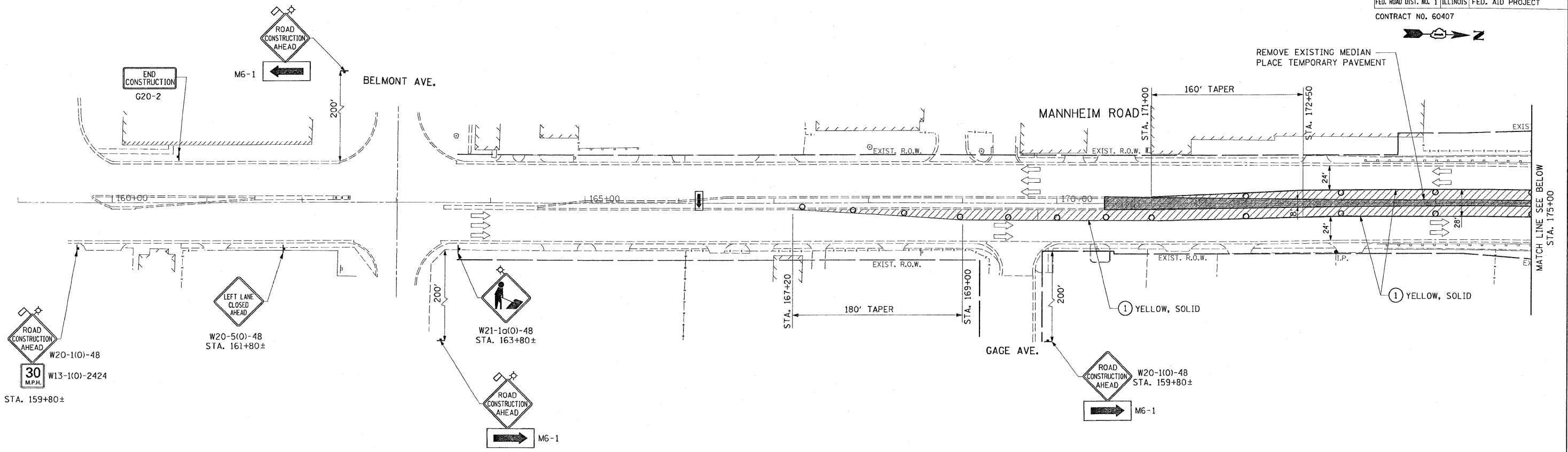
TYP-1

REVISIONS		ILLINOIS DEPARTMENT OF TRANSPORTATION FAP 330 US 12/45 (MANNHEIM RD.) OVER 500 LINE RR & FRANKLIN AVE. TYPICAL SECTIONS
NAME	DATE	

EARTHTECH | AECOM

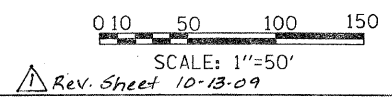
SCALE: N.T.S. DRAWN BY: CJO
DATE: JULY 8, 2009 CHECKED BY: PWK

Rev. Sheet 10-13-09



- LEGEND**
- TEMPORARY PAVEMENT { 9" PCC BASE COURSE OR 12" HMA BINDER COURSE
 - ARROW BOARD
 - DRUM OR TYPE II PLASTIC BARRICADE WITH STEADY BURNING LIGHT, 50' C-C ON CURVE/TAPER 100' C-C ON TANGENT
 - WORK ZONE
 - DIRECTION OF TRAFFIC
 - TEMPORARY PAVEMENT MARKING-LINE 4"

NOTE:
 PAVEMENT MARKINGS SHALL BE INSTALLED AT ALL MEDIAN REMOVAL AND TEMPORARY PAVEMENT LOCATIONS. THE PAVEMENT MARKING SHALL CONSIST OF A 4" SOLID YELLOW EDGE LINE ALONG THE LEFT EDGE OF THE INNER LANE



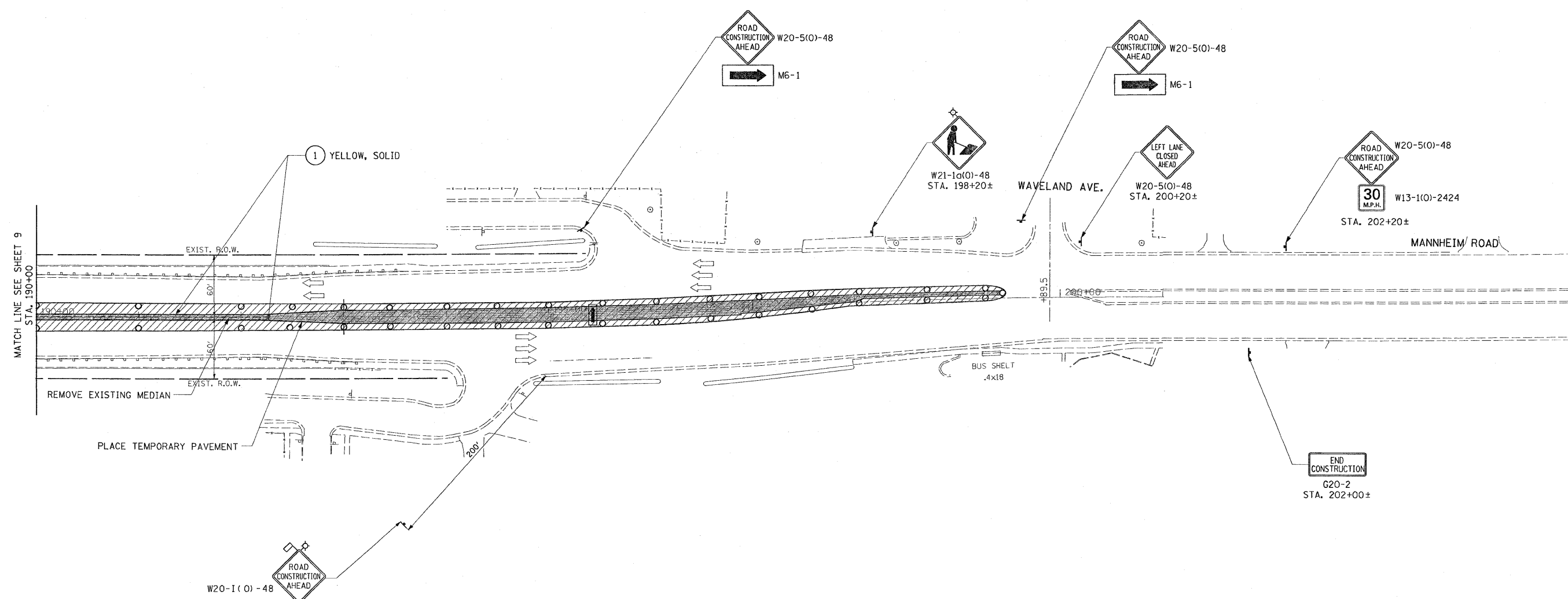
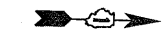
EARTH TECH | AECOM

REVISIONS	
NAME	DATE

ILLINOIS DEPARTMENT OF TRANSPORTATION
 FAP 330 US 12/45 (MANNHEIM RD.) OVER
 500 LINE RR & FRANKLIN AVE.
**MAINTENANCE OF TRAFFIC
 PRE-STAGE**
 SCALE: 1" = 50'
 DATE: JULY 8, 2009
 DRAWN BY: CJO
 CHECKED BY: PWK

L:\work\153346\cadd\drawings\Roadway\09MOT\prstg.dgn 10/11/2009

MOT-2



- LEGEND**
- TEMPORARY PAVEMENT { 9" PCC BASE COURSE OR 12" HMA BINDER COURSE
 - ARROW BOARD
 - DRUM OR TYPE II PLASTIC BARRICADE WITH STEADY BURNING LIGHT, 50' C-C ON CURVE/TAPER 100' C-C ON TANGENT
 - WORK ZONE
 - DIRECTION OF TRAFFIC
 - TEMPORARY PAVEMENT MARKING-LINE 4"

NOTE:
 PAVEMENT MARKINGS SHALL BE INSTALLED AT ALL MEDIAN REMOVAL AND TEMPORARY PAVEMENT LOCATIONS. THE PAVEMENT MARKING SHALL CONSIST OF A 4" SOLID YELLOW EDGE LINE ALONG THE LEFT EDGE OF THE INNER LANE

0 10 50 100 150
 SCALE: 1"=50'
 Rev. Sheet 10-13-09

EARTH TECH | AECOM

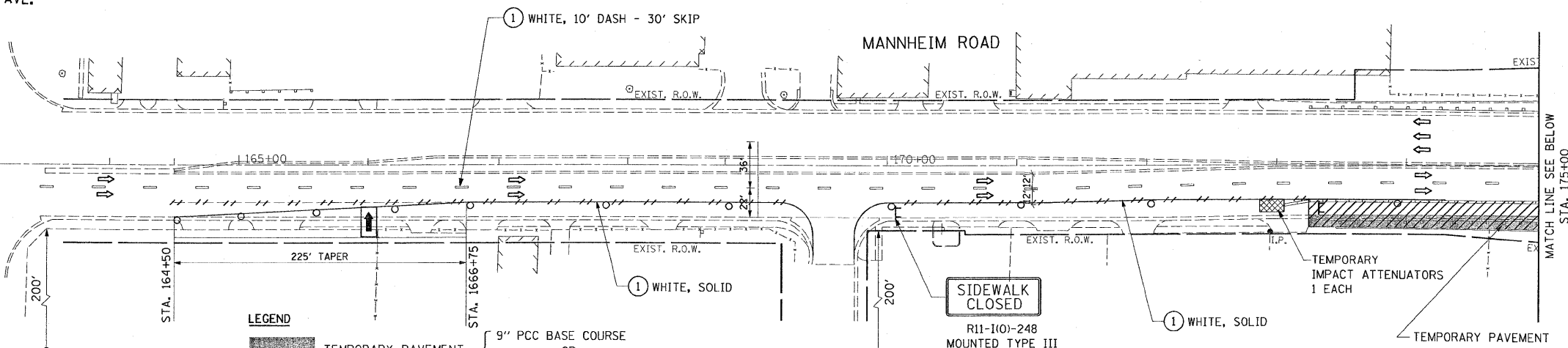
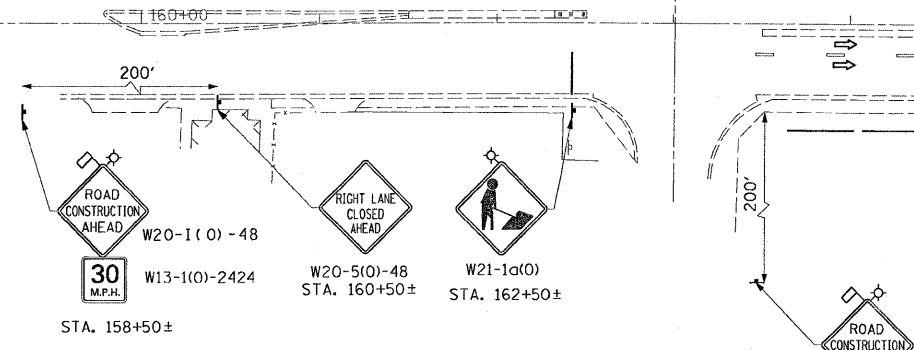
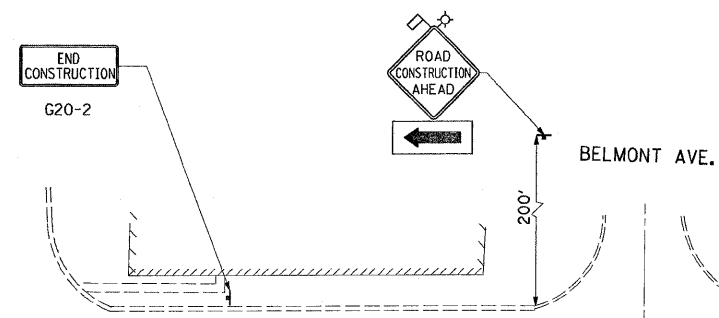
REVISIONS	
NAME	DATE

ILLINOIS DEPARTMENT OF TRANSPORTATION
 FAP 330 US 12/45 (MANNHEIM RD.) OVER
 300 LINE RR & FRANKLIN AVE.
**MAINTENANCE OF TRAFFIC
 PRE-STAGE**
 SCALE: 1" = 50'
 DATE: JULY 8, 2009
 DRAWN BY: CJO
 CHECKED BY: PWK

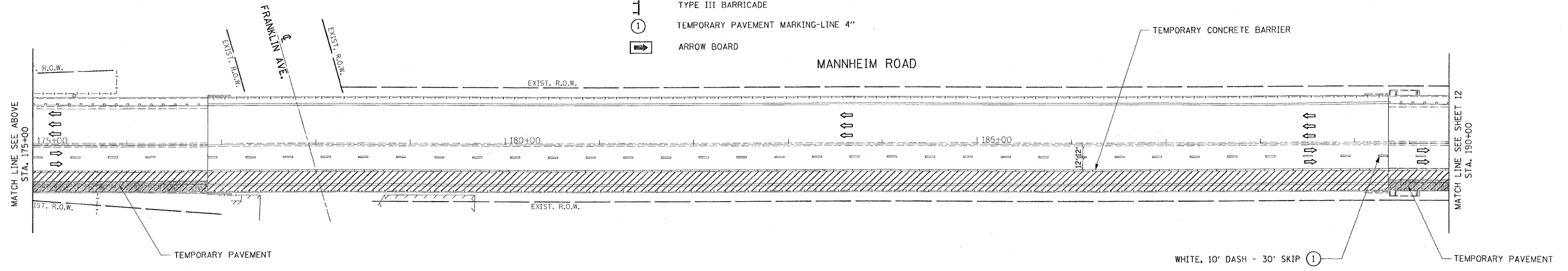
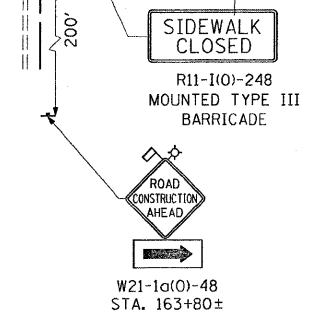
L:\work\53346\cadd\drawings\Roadway\10MOT\prstg.dgn
 10/11/2009

MOT-3

F.A.P. RTE.	SECTION	COUNTY	TOTAL SHEETS	SHEET NO.
330	465 VB-R-1	COOK	103	11
STA.		TO STA.		
FED. ROAD DIST. NO. 1 ILLINOIS FED. AID PROJECT				
CONTRACT NO. 60407				



- LEGEND**
- TEMPORARY PAVEMENT
 - TEMPORARY CONCRETE BARRIER
 - WORK ZONE
 - DIRECTION OF TRAFFIC
 - DRUM OR TYPE II PLASTIC BARRICADE WITH STEADY BURNING LIGHT, 50' C-C ON CURVE/TAPER 100' C-C ON TANGENT
 - TRAFFIC SIGN
 - PAVEMENT MARKING REMOVAL
 - TYPE III BARRICADE
 - TEMPORARY PAVEMENT MARKING-LINE 4"
 - ARROW BOARD



L:\work\53346\cadd\drawings\Roadway\110101\101.dgn 10/1/2009

0 10 50 100 150
SCALE: 1"=50'
Rev. Sheet 10-13-09

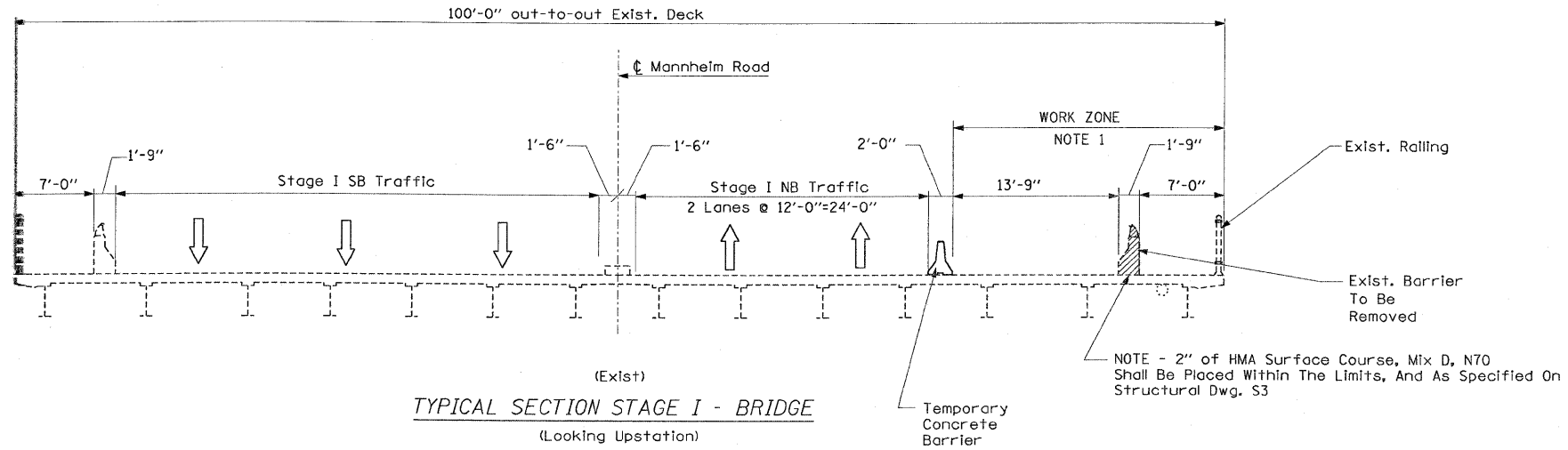
EARTH TECH | AECOM

REVISIONS		ILLINOIS DEPARTMENT OF TRANSPORTATION FAP 330 US 12/45 (MANNHEIM RD.) OVER 500 LINE RR & FRANKLIN AVE. MAINTENANCE OF TRAFFIC STAGE I
NAME	DATE	

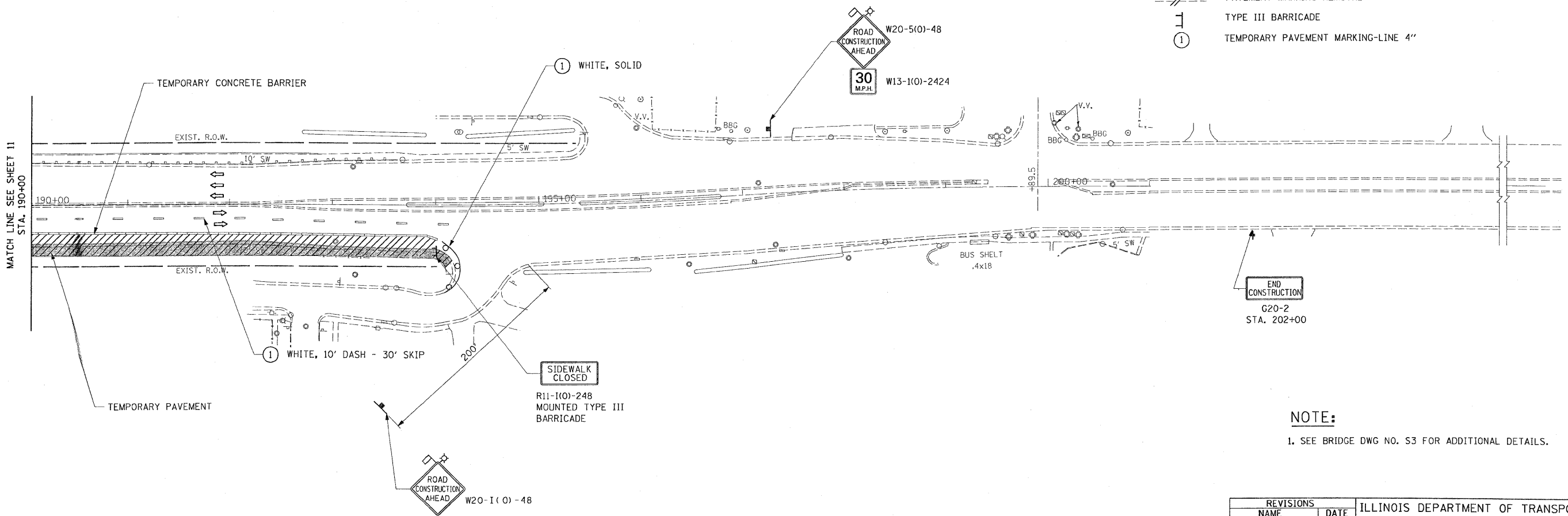
SCALE: 1" = 50' DRAWN BY: CJO
DATE: JULY 8, 2009 CHECKED BY: PWK

MOT-4

F.A.P. RTE.	SECTION	COUNTY	TOTAL SHEETS	SHEET NO.
330	465 VB-R-1	COOK	103	12
STA.		TO STA.		
FED. ROAD DIST. NO. 1		ILLINOIS	FED. AID PROJECT	
CONTRACT NO. 60407				



- LEGEND**
- TEMPORARY PAVEMENT { 9" PCC BASE COURSE OR 12" HMA BINDER COURSE
 - TEMPORARY CONCRETE BARRIER
 - WORK ZONE
 - DIRECTION OF TRAFFIC
 - DRUM OR TYPE II PLASTIC BARRICADE WITH STEADY BURNING LIGHT, 50' C-C ON CURVE/TAPER 100' C-C ON TANGENT
 - TRAFFIC SIGN
 - PAVEMENT MARKING REMOVAL
 - TYPE III BARRICADE
 - TEMPORARY PAVEMENT MARKING-LINE 4"



NOTE:
1. SEE BRIDGE DWG NO. S3 FOR ADDITIONAL DETAILS.

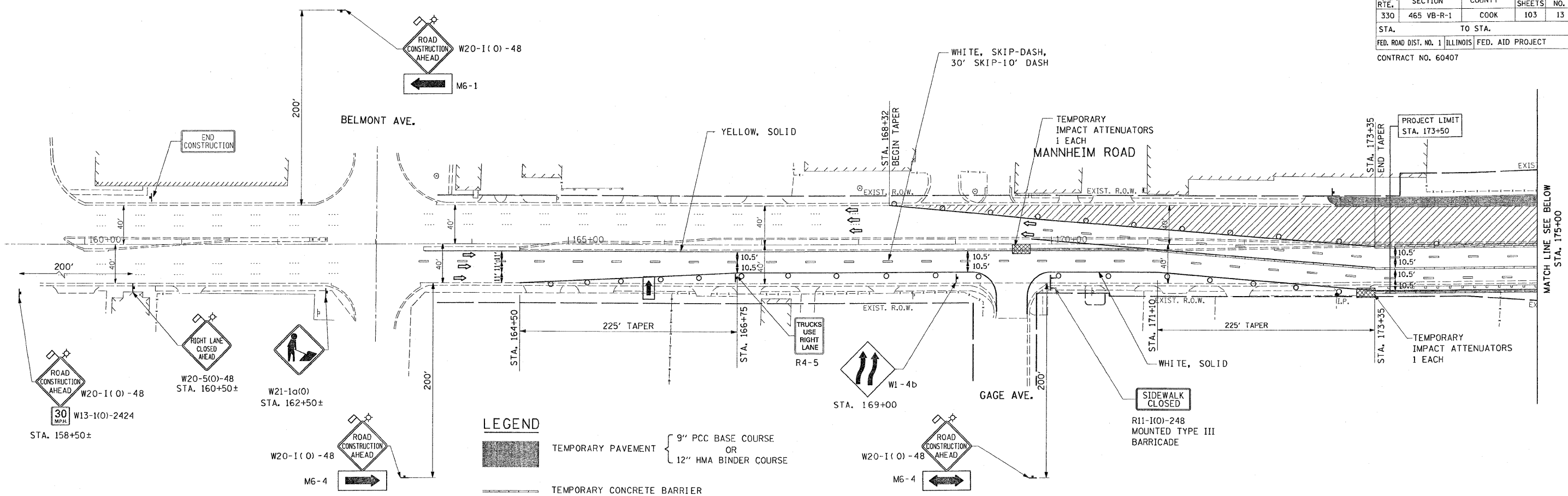
MOT-5

REVISIONS		ILLINOIS DEPARTMENT OF TRANSPORTATION FAP 330 US 12/45 (MANNHEIM RD.) OVER 500 LINE RR & FRANKLIN AVE. MAINTENANCE OF TRAFFIC STAGE I
NAME	DATE	
		SCALE: 1"= 50' DATE: JULY 8, 2009 DRAWN BY: CJO CHECKED BY: PWK

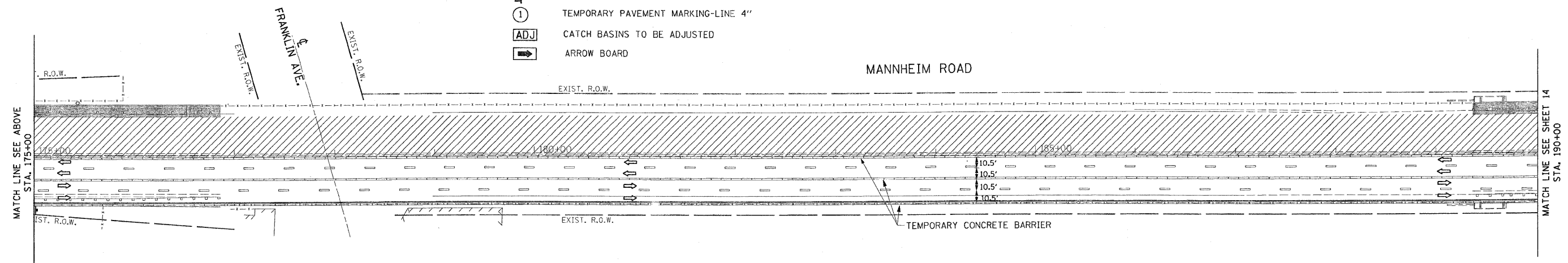
0 10 50 100 150
SCALE: 1"=50'
Rev. Sheet 10-13-09

EARTH TECH | AECOM

L:\work\53346\cadd\drawings\Roadway\12MOT\stg1.dgn 10/1/2009



- LEGEND**
- TEMPORARY PAVEMENT { 9" PCC BASE COURSE OR 12" HMA BINDER COURSE
 - TEMPORARY CONCRETE BARRIER
 - WORK ZONE
 - DIRECTION OF TRAFFIC
 - DRUM OR TYPE II PLASTIC BARRICADE WITH STEADY BURNING LIGHT, 50' C-C ON CURVE/TAPER 100' C-C ON TANGENT
 - TRAFFIC SIGN
 - PAVEMENT MARKING REMOVAL
 - TYPE III BARRICADE
 - TEMPORARY PAVEMENT MARKING-LINE 4"
 - CATCH BASINS TO BE ADJUSTED
 - ARROW BOARD



L:\work\153346\cadd\dr-swings\Roadway\13MOT1stg2.dgn 10/1/2009

0 10 50 100 150
SCALE: 1"=50'
Rev. Sheet 10-13-09

EARTH TECH | AECOM

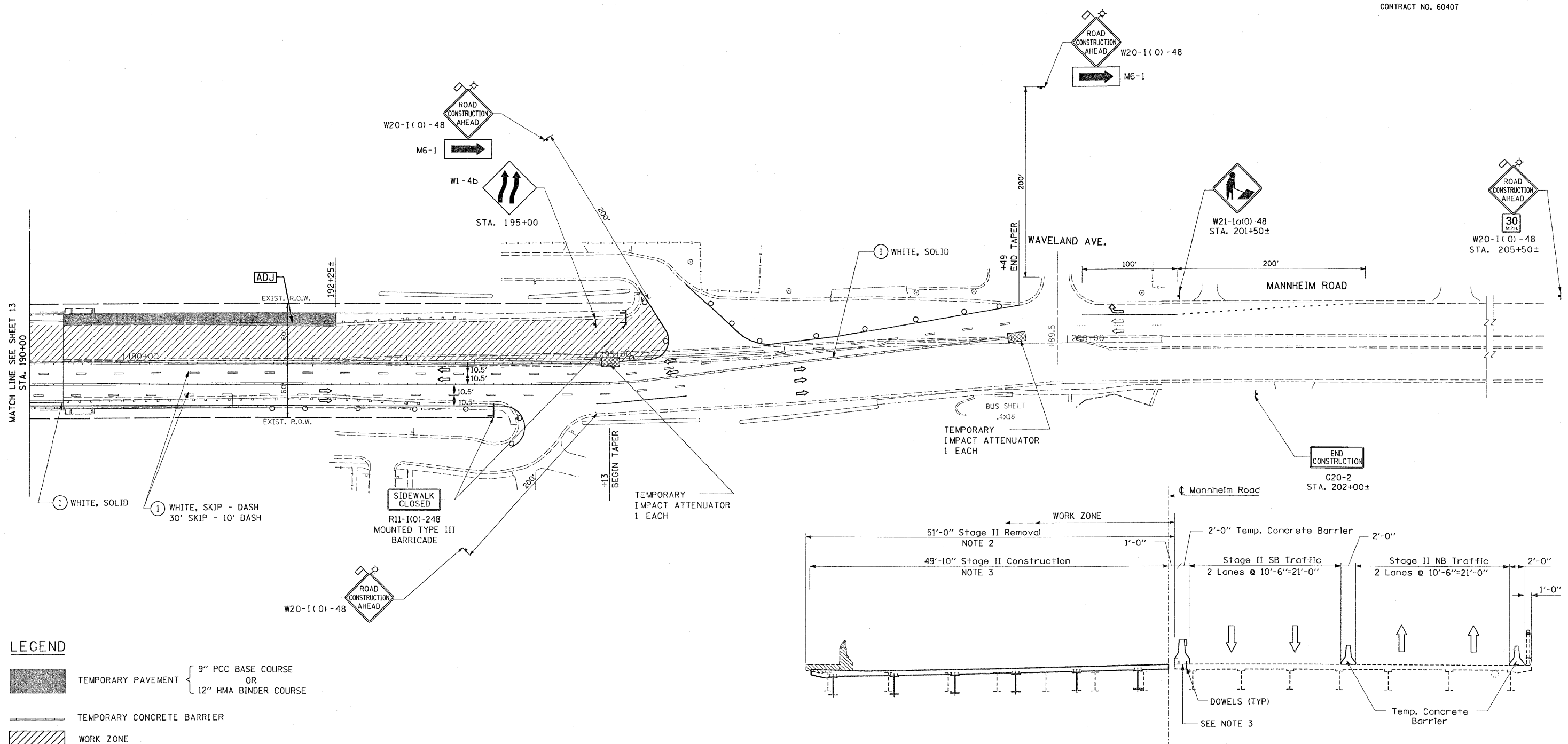
REVISIONS	
NAME	DATE

ILLINOIS DEPARTMENT OF TRANSPORTATION
FAP 330 US 12/45 (MANNHEIM RD.) OVER
500 LINE RR & FRANKLIN AVE.

**MAINTENANCE OF TRAFFIC
STAGE II**

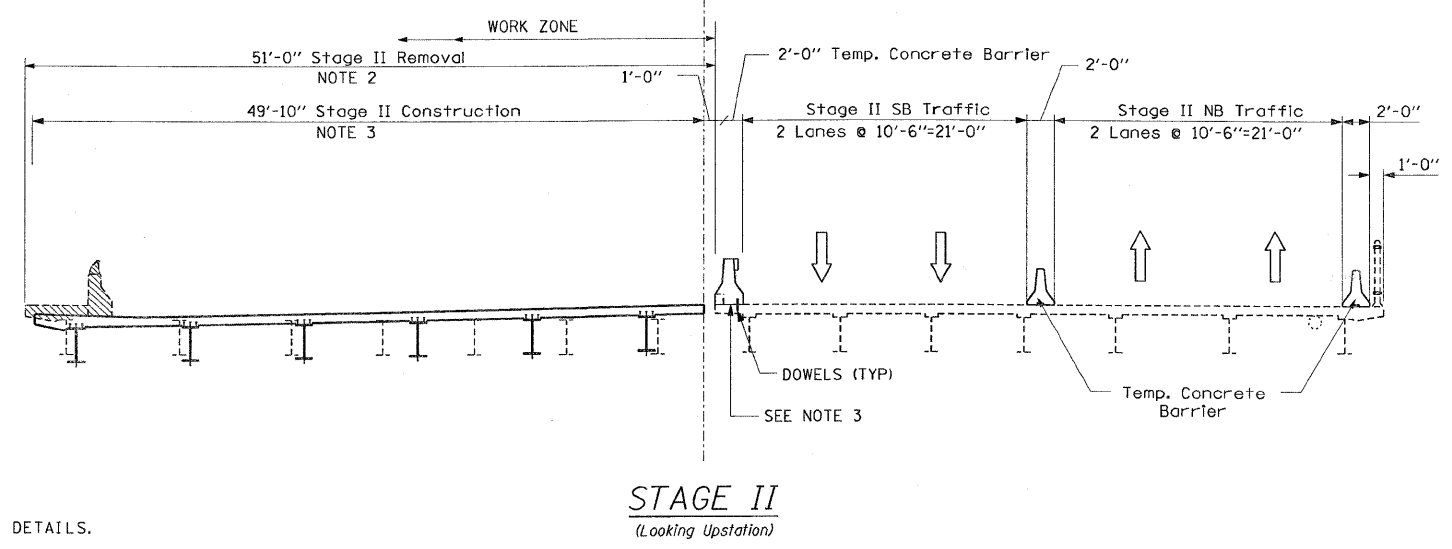
SCALE: 1"= 50' DRAWN BY: CJO
DATE: JULY 8, 2009 CHECKED BY: PWK

MOT-6



- LEGEND**
- TEMPORARY PAVEMENT { 9" PCC BASE COURSE OR 12" HMA BINDER COURSE
 - TEMPORARY CONCRETE BARRIER
 - WORK ZONE
 - DIRECTION OF TRAFFIC
 - DRUM OR TYPE II PLASTIC BARRICADE WITH STEADY BURNING LIGHT, 50' C-C ON CURVE/TAPER 100' C-C ON TANGENT
 - TRAFFIC SIGN
 - PAVEMENT MARKING REMOVAL
 - TYPE III BARRICADE
 - TEMPORARY PAVEMENT MARKING-LINE 4"
 - CATCH BASINS TO BE ADJUSTED

NOTE
 1. SEE BRIDGE DWG. NO. S3, S4, S5 AND S46 FOR DETAILS.



L:\work\53346\cadd\drawings\Roadway\14MOT\stg2.dgn 10/1/2009

0 10 50 100 150
 SCALE: 1"=50'
 Rev. Sheet 10-13-09

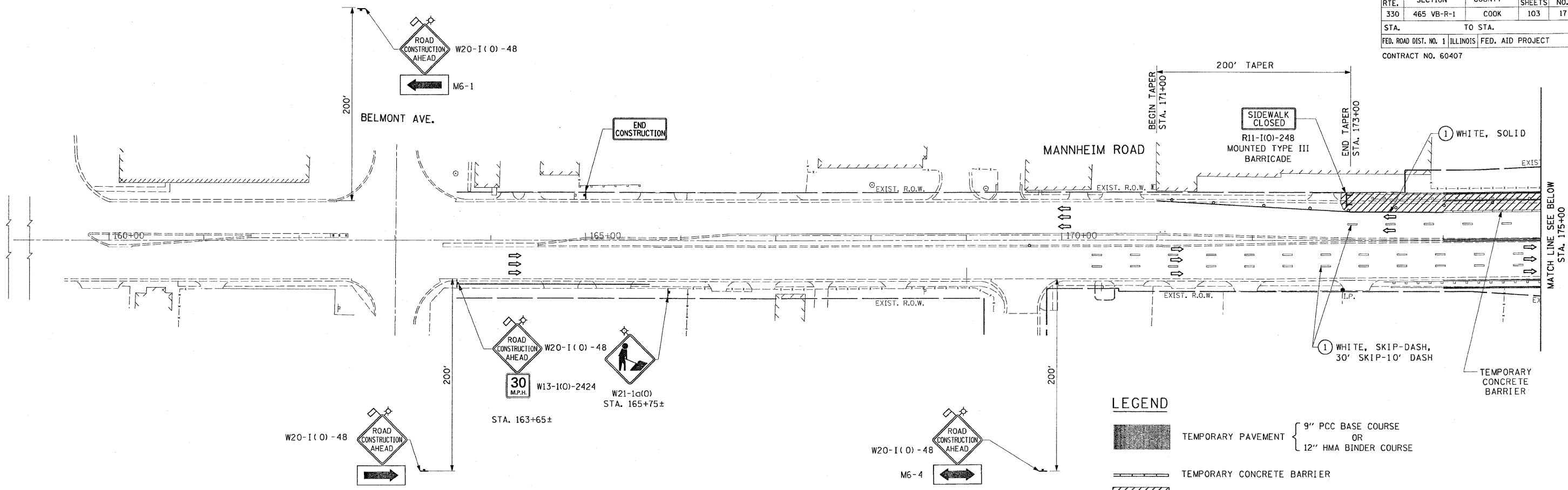
EARTH TECH | AECOM

REVISIONS	
NAME	DATE

ILLINOIS DEPARTMENT OF TRANSPORTATION
 FAP 330 US 12/45 (MANNHEIM RD.) OVER
 S00 LINE RR & FRANKLIN AVE.
**MAINTENANCE OF TRAFFIC
 STAGE II**
 SCALE: 1"= 50'
 DATE: JULY 8, 2009
 DRAWN BY: CJO
 CHECKED BY: PWK

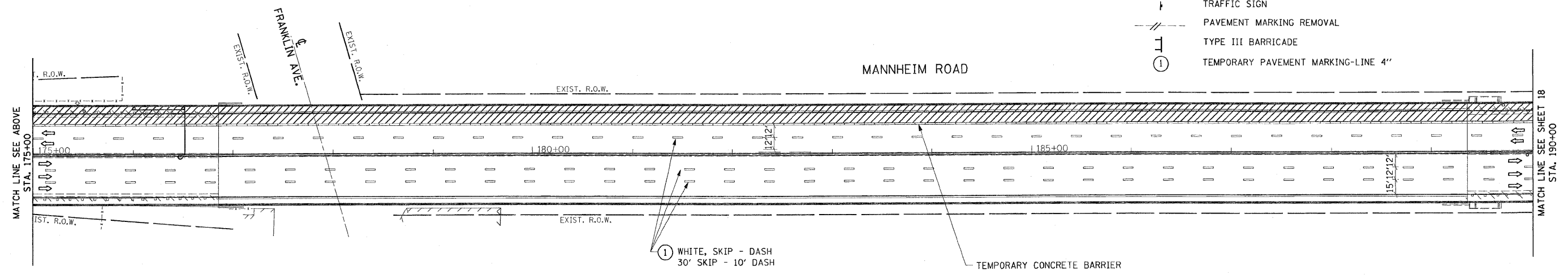
MOT-7

F.A.P. RTE.	SECTION	COUNTY	TOTAL SHEETS	SHEET NO.
330	465 VB-R-1	COOK	103	17
STA.		TO STA.		
FED. ROAD DIST. NO. 1		ILLINOIS FED. AID PROJECT		
CONTRACT NO. 60407				



LEGEND

- TEMPORARY PAVEMENT { 9" PCC BASE COURSE OR 12" HMA BINDER COURSE
- TEMPORARY CONCRETE BARRIER
- WORK ZONE
- DIRECTION OF TRAFFIC
- DRUM OR TYPE II PLASTIC BARRICADE WITH STEADY BURNING LIGHT, 50' C-C ON CURVE/TAPER 100' C-C ON TANGENT
- TRAFFIC SIGN
- PAVEMENT MARKING REMOVAL
- TYPE III BARRICADE
- TEMPORARY PAVEMENT MARKING-LINE 4"



L:\work\153346\ceod\drawings\Roadway\17MOT\stg4.dgn 10/1/2009

0 10 50 100 150
SCALE: 1"=50'
A Rev. sheet 10-13-09

EARTH TECH | AECOM

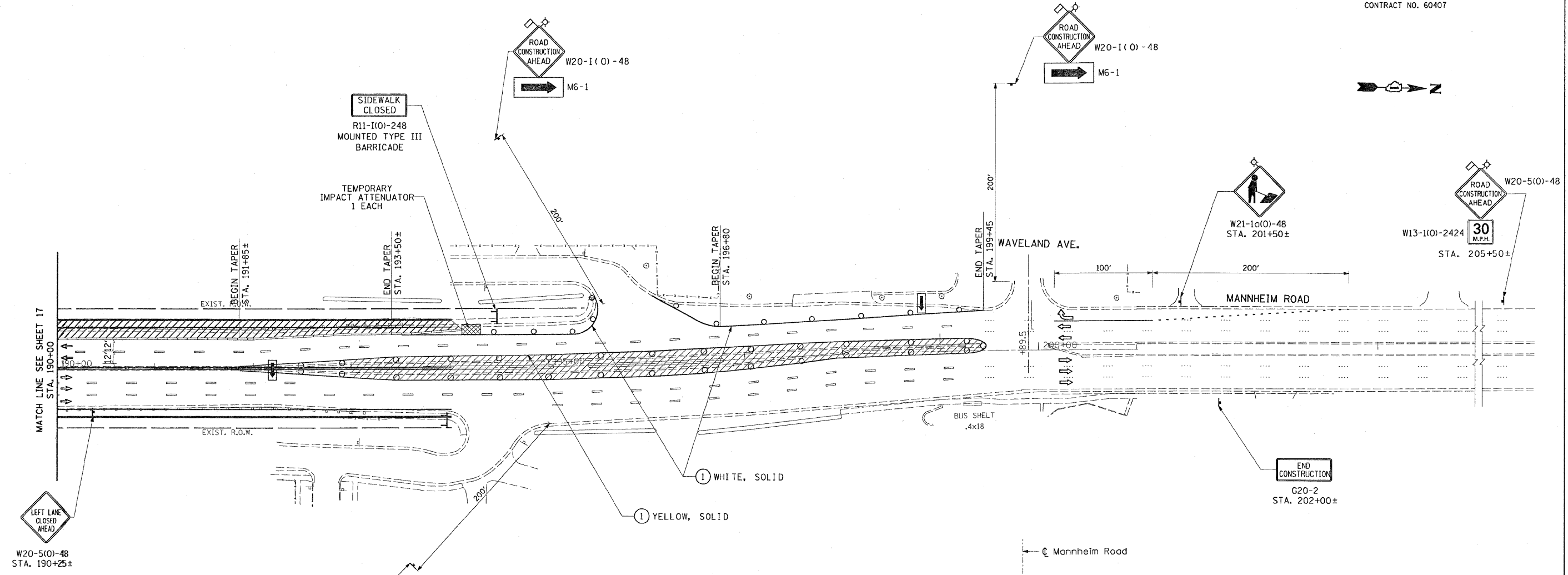
REVISIONS	
NAME	DATE

ILLINOIS DEPARTMENT OF TRANSPORTATION
FAP 330 US 12/45 (MANNHEIM RD.) OVER
SOU LINE RR & FRANKLIN AVE.
**MAINTENANCE OF TRAFFIC
STAGE IV**

SCALE: 1"= 50' DRAWN BY: CJO
DATE: JULY 8, 2009 CHECKED BY: PWK

MOT-10

F.A.P. RTE.	SECTION	COUNTY	TOTAL SHEETS	SHEET NO.
330	465 VB-R-1	COOK	103	18
STA.		TO STA.		
FED. ROAD DIST. NO. 1		ILLINOIS FED. AID PROJECT		
CONTRACT NO. 60407				



MATCH LINE SEE SHEET 17
STA. 190+00

W20-5(0)-48
STA. 190+25±

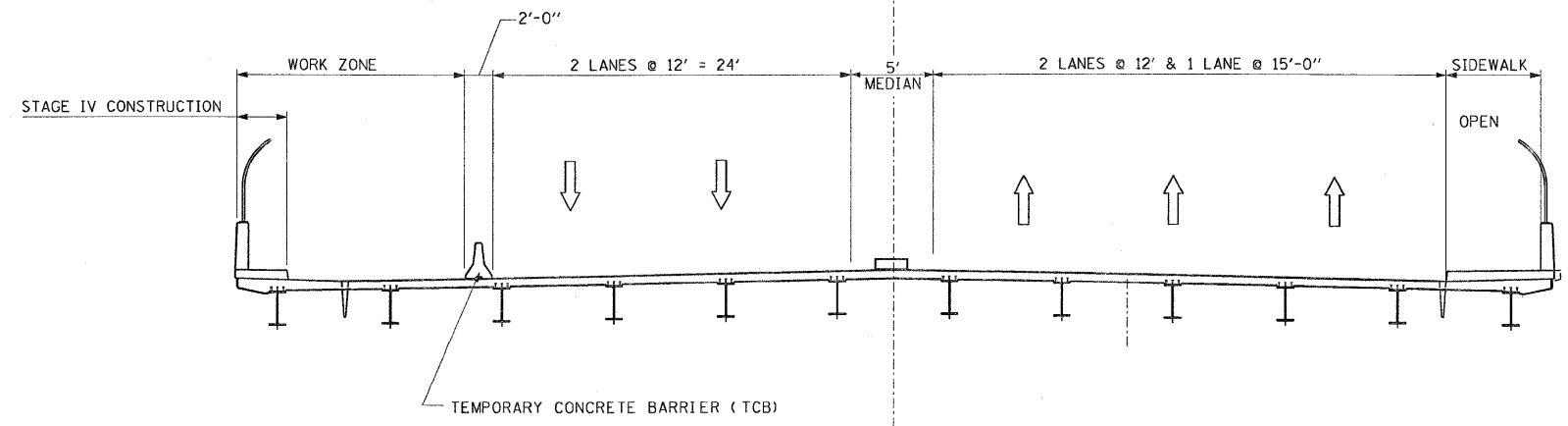
W20-1(0)-48
M6-1

END CONSTRUCTION
G20-2
STA. 202+00±

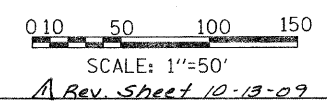
W13-1(0)-2424
30 M.P.H.
STA. 205+50±

LEGEND

- TEMPORARY PAVEMENT { 9" PCC BASE COURSE OR 12" HMA BINDER COURSE
- TEMPORARY CONCRETE BARRIER
- WORK ZONE
- DIRECTION OF TRAFFIC
- DRUM OR TYPE II PLASTIC BARRICADE WITH STEADY BURNING LIGHT, 50' C-C ON CURVE/TAPER 100' C-C ON TANGENT
- TRAFFIC SIGN
- PAVEMENT MARKING REMOVAL
- TYPE III BARRICADE
- TEMPORARY PAVEMENT MARKING-LINE 4"



STAGE IV
(Looking Upstation)



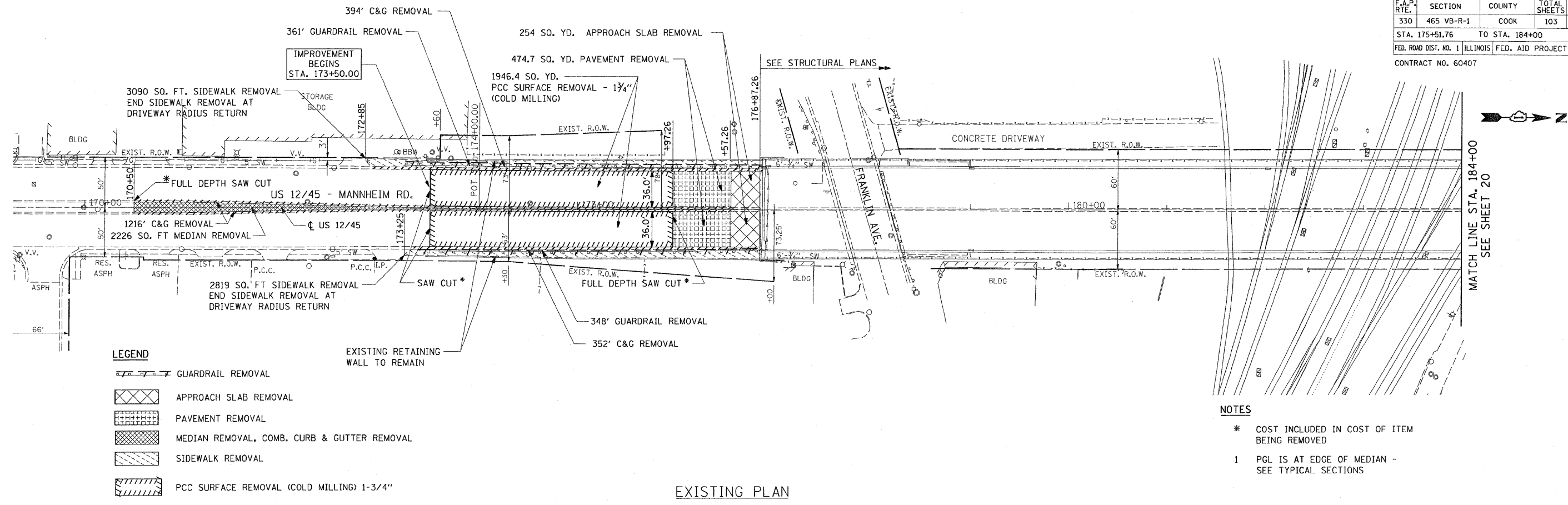
EARTH TECH | AECOM

REVISIONS	
NAME	DATE

MOT-11
ILLINOIS DEPARTMENT OF TRANSPORTATION
FAP 330 US 12/45 (MANNHEIM RD.) OVER
500 LINE RR & FRANKLIN AVE.
**MAINTENANCE OF TRAFFIC
STAGE IV**
SCALE: 1"= 50'
DATE: JULY 8, 2009
DRAWN BY: CJO
CHECKED BY: FWK

L:\work\53346\cead\drawings\Roadway\18MOT\stg4.dgn 10/11/2009

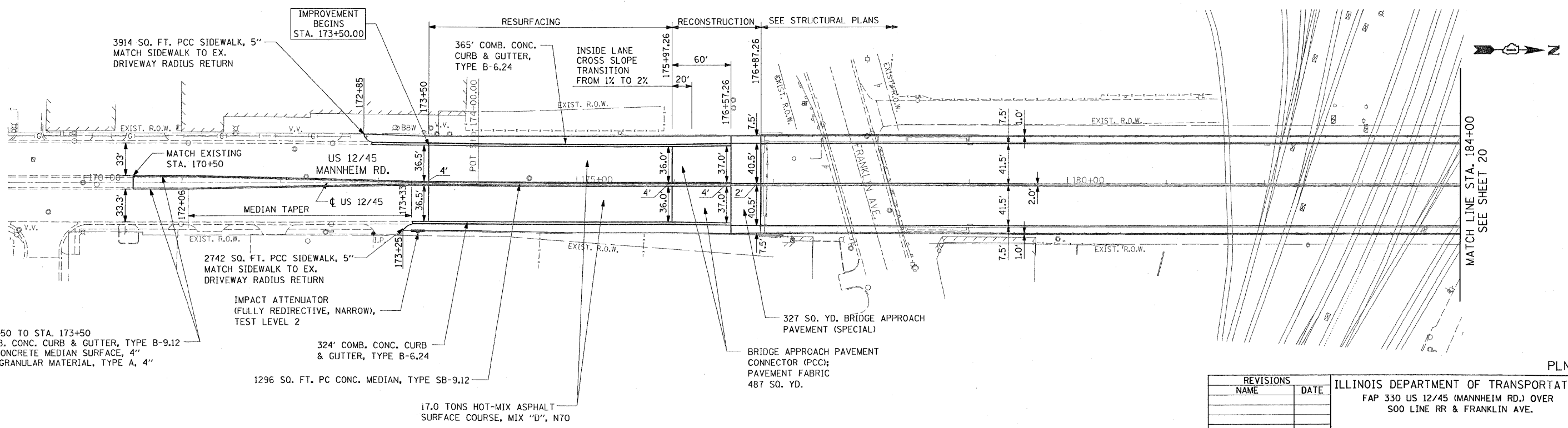
F.A.P. RTE.	SECTION	COUNTY	TOTAL SHEETS	SHEET NO.
330	465 VB-R-1	COOK	103	19
STA. 175+51.76		TO STA. 184+00		
FED. ROAD DIST. NO. 1 ILLINOIS FED. AID PROJECT				
CONTRACT NO. 60407				



- LEGEND**
- GUARDRAIL REMOVAL
 - APPROACH SLAB REMOVAL
 - PAVEMENT REMOVAL
 - MEDIAN REMOVAL, COMB. CURB & GUTTER REMOVAL
 - SIDEWALK REMOVAL
 - PCC SURFACE REMOVAL (COLD MILLING) 1-3/4"

- NOTES**
- * COST INCLUDED IN COST OF ITEM BEING REMOVED
 - 1 PGL IS AT EDGE OF MEDIAN - SEE TYPICAL SECTIONS

EXISTING PLAN



STA. 170+50 TO STA. 173+50
 600' COMB. CONC. CURB & GUTTER, TYPE B-9.12
 2181 SF CONCRETE MEDIAN SURFACE, 4"
 SUBBASE GRANULAR MATERIAL, TYPE A, 4"

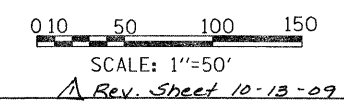
324' COMB. CONC. CURB & GUTTER, TYPE B-6.24

1296 SQ. FT. PC CONC. MEDIAN, TYPE SB-9.12

17.0 TONS HOT-MIX ASPHALT SURFACE COURSE, MIX "D", N70

BRIDGE APPROACH PAVEMENT CONNECTOR (PCC); PAVEMENT FABRIC
 487 SQ. YD.

PROPOSED PLAN



REVISIONS	
NAME	DATE

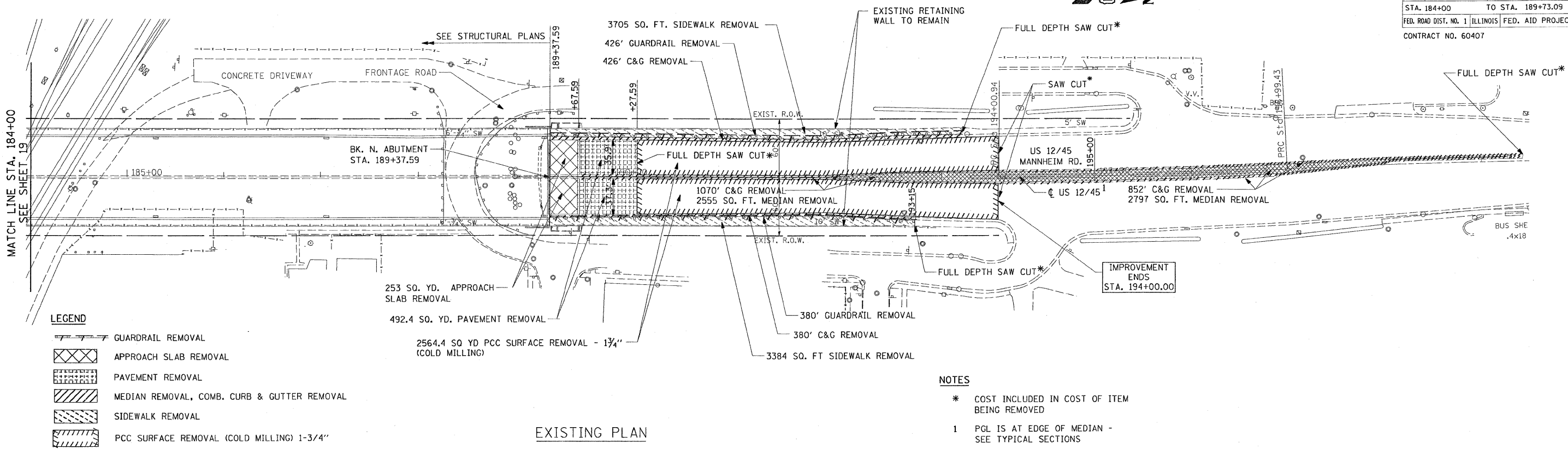
ILLINOIS DEPARTMENT OF TRANSPORTATION
 FAP 330 US 12/45 (MANNHEIM RD.) OVER
 S00 LINE RR & FRANKLIN AVE.

ROADWAY PLAN
 STA. 170+50 TO STA. 184+00

SCALE: 1" = 50'
 DATE: JULY 8, 2009
 DRAWN BY: CJO
 CHECKED BY: PWK

L:\work\533346\cadd\drawings\Roadway\19r-dwg.dgn 10/1/2009

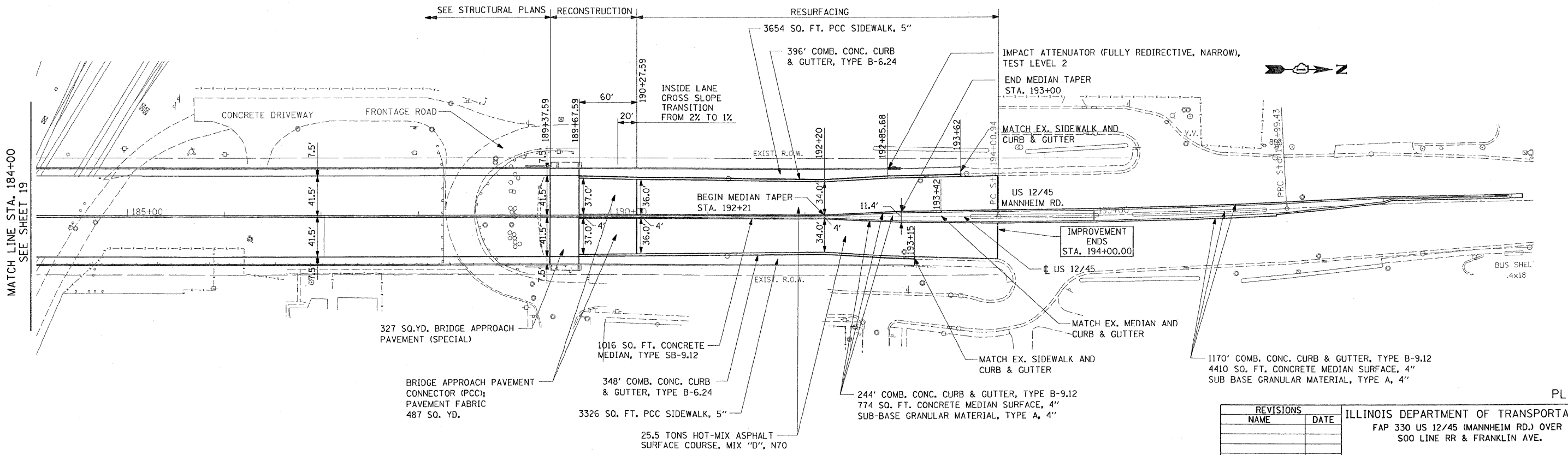
F.A.P. RT.	SECTION	COUNTY	TOTAL SHEETS	SHEET NO.
330	465 VB-R-1	COOK	103	20
STA. 184+00		TO STA. 189+73.09		
FED. ROAD DIST. NO. 1 ILLINOIS FED. AID PROJECT				
CONTRACT NO. 60407				



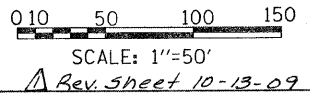
- LEGEND**
- GUARDRAIL REMOVAL
 - APPROACH SLAB REMOVAL
 - PAVEMENT REMOVAL
 - MEDIAN REMOVAL, COMB. CURB & GUTTER REMOVAL
 - SIDEWALK REMOVAL
 -

- NOTES**
- * COST INCLUDED IN COST OF ITEM BEING REMOVED
 - 1 PGL IS AT EDGE OF MEDIAN - SEE TYPICAL SECTIONS

EXISTING PLAN



PROPOSED PLAN



EARTH TECH | AECOM

REVISIONS	
NAME	DATE

ILLINOIS DEPARTMENT OF TRANSPORTATION
FAP 330 US 12/45 (MANNHEIM RD.) OVER
500 LINE RR & FRANKLIN AVE.

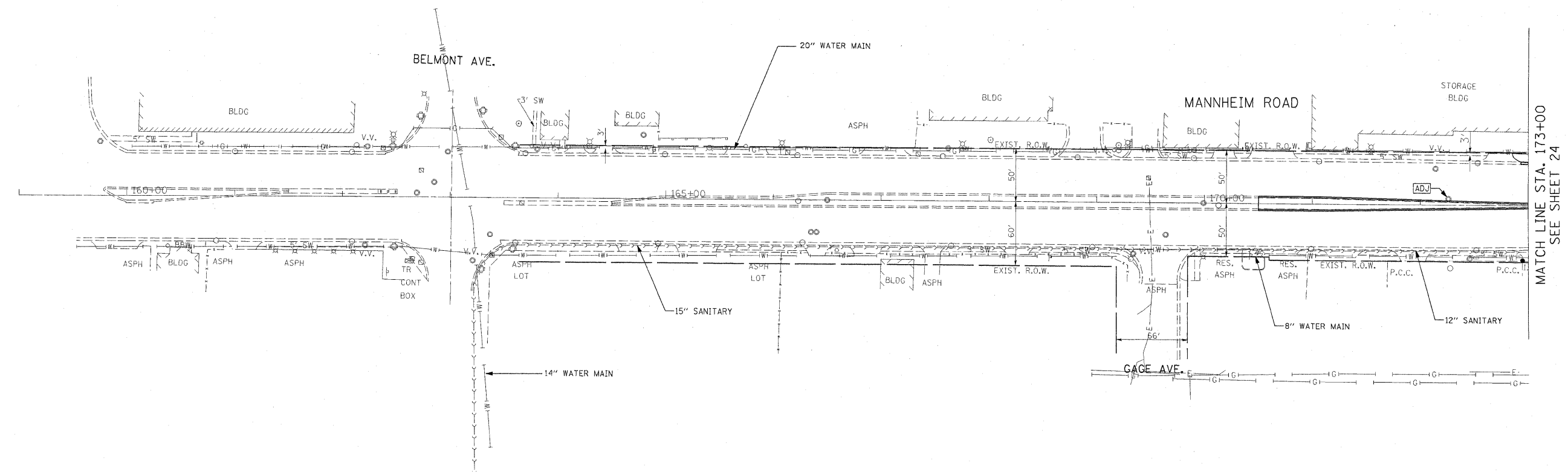
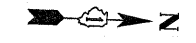
ROADWAY PLAN
STA. 184+00 TO STA. 194+00

SCALE: 1" = 50'
DATE: JULY 8, 2009
DRAWN BY: CJO
CHECKED BY: PWK

L:\work\53346\cadd\drawings\Roadway\20-dwg.dgn 10/1/2009

PLN-2

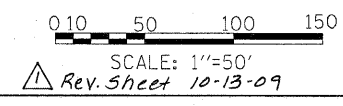
F.A.P. RTE.	SECTION	COUNTY	TOTAL SHEETS	SHEET NO.
330	465 VB-R-1	COOK	103	23
STA.		TO STA.		
FED. ROAD DIST. NO. 1		ILLINOIS	FED. AID PROJECT	
CONTRACT NO. 60407				



MATCH LINE STA. 173+00
SEE SHEET 24

L:\WORK\53346\cadd\drawings\Roadway\23d-ut.mxd
10/6/2009

UT-01

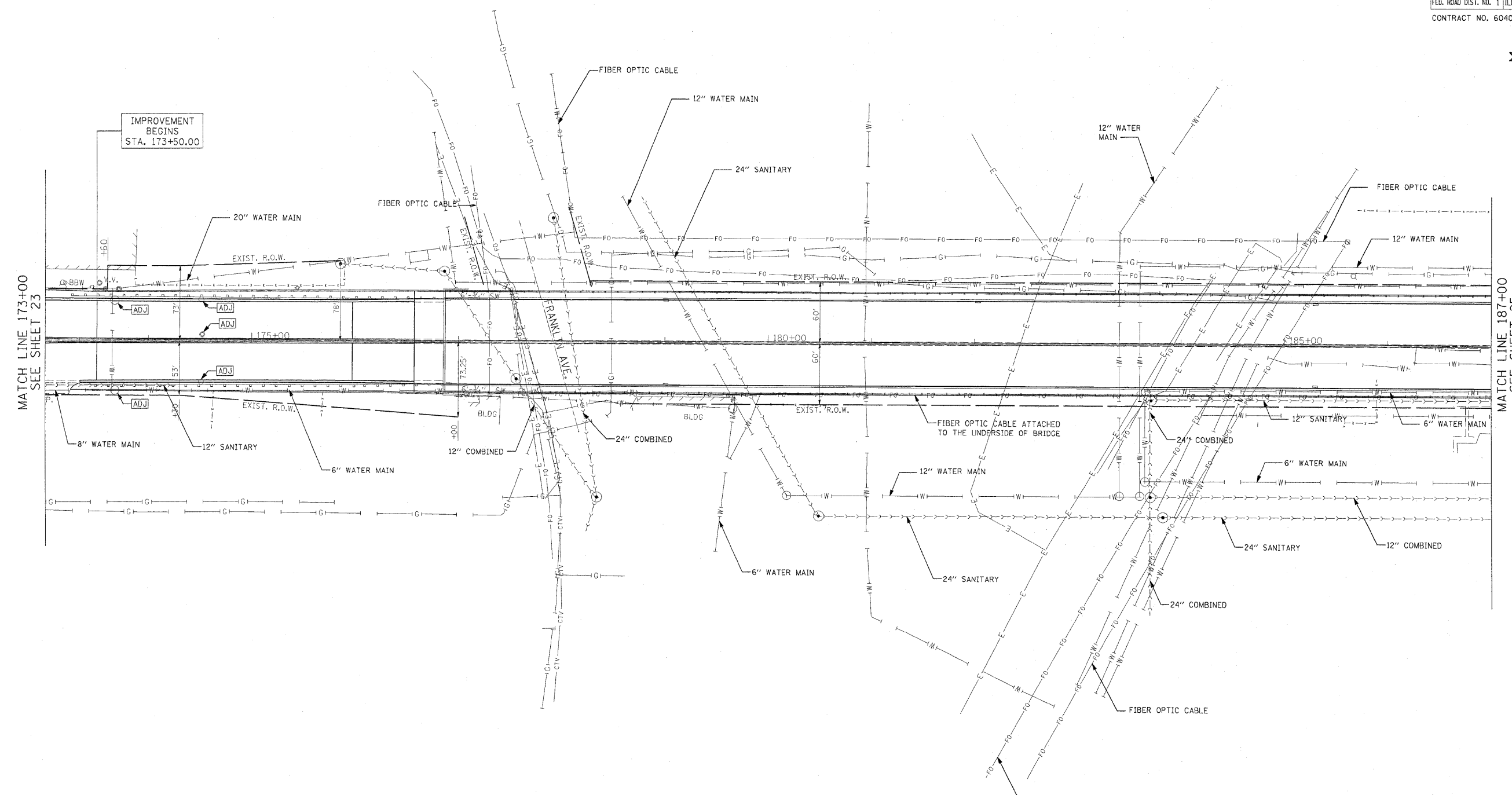


EARTHTECH | AECOM

REVISIONS	
NAME	DATE
SUE INFORMATION	10/6/09

ILLINOIS DEPARTMENT OF TRANSPORTATION
 FAP 330 US 12/45 (MANNHEIM RD.) OVER
 500 LINE RR & FRANKLIN AVE.
DRAINAGE AND UTILITY PLAN
 STA. 159+00 TO STA. 173+00
 SCALE: 1"=50'
 DATE: JULY 8, 2009
 DRAWN BY: CJO
 CHECKED BY: PWK

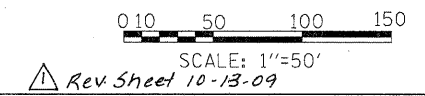
F.A.P. RTE.	SECTION	COUNTY	TOTAL SHEETS	SHEET NO.
330	465 VB-R-1	COOK	103	24
STA.		TO STA.		
FED. ROAD DIST. NO. 1		ILLINOIS FED. AID PROJECT		
CONTRACT NO. 60407				



MATCH LINE 173+00
SEE SHEET 23

MATCH LINE 187+00
SEE SHEET 25

L:\WORK\53346\cadd\drawings\Roadkey\24drain.dgn
10/6/2009

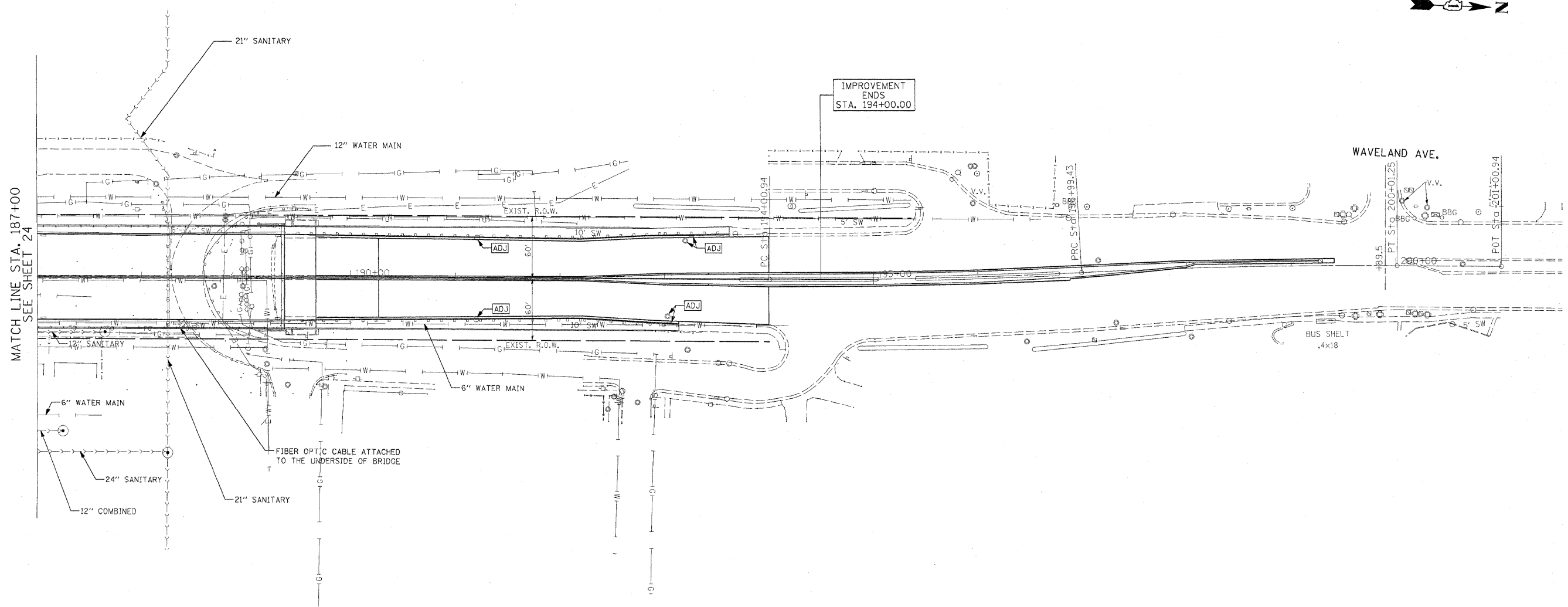
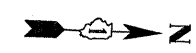


EARTH TECH | AECOM

REVISIONS		
NAME	DATE	
SUE INFORMATION	10/6/09	

UT-02
ILLINOIS DEPARTMENT OF TRANSPORTATION
FAP 330 US 12/45 (MANNHEIM RD.) OVER
500 LINE RR & FRANKLIN AVE.
DRAINAGE AND UTILITY PLAN
STA. 173+00 TO STA. 187+00
SCALE: 1"=50'
DATE: JULY 8, 2009
DRAWN BY: CJO
CHECKED BY: PWK

F.A.P. RTE.	SECTION	COUNTY	TOTAL SHEETS	SHEET NO.
330	465 VB-R-1	COOK	103	25
STA.		TO STA.		
FED. ROAD DIST. NO. 1		ILLINOIS	FED. AID PROJECT	
CONTRACT NO. 60407				



MATCH LINE STA. 187+00
SEE SHEET 24

IMPROVEMENT
ENDS
STA. 194+00.00

WAVELAND AVE.

FIBER OPTIC CABLE ATTACHED
TO THE UNDERSIDE OF BRIDGE

BUS SHELTER
.4x18

UT-03

REVISIONS	
NAME	DATE
SUE INFORMATION	10/6/09

ILLINOIS DEPARTMENT OF TRANSPORTATION
FAP 330 US 12/45 (MANNHEIM RD.) OVER
S00 LINE RR & FRANKLIN AVE.

DRAINAGE AND UTILITY PLAN
STA. 187+00 TO STA. 201+00.94

SCALE: 1"=50'
DATE: JULY 8, 2009
DRAWN BY: CJO
CHECKED BY: PWK

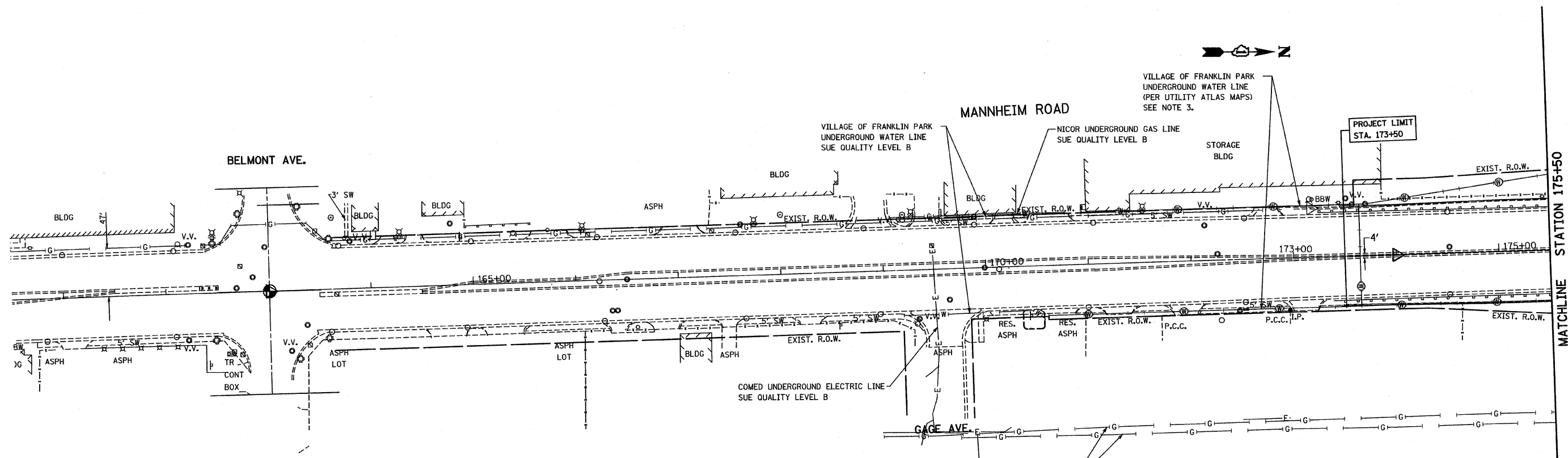


Rev. Sheet 10-13-09 SCALE: 1"=50'



L:\WORK\53346\cadd\drawings\Roadway\25drain.dgn
10/6/2009

F.A.P.	SECTION	COUNTY	TOTAL SHEETS	SHEET NO.
330	465 VB-R-1	COOK	103	26
STA. 173+50 TO STA. 195+00		FED. ROAD DIST. NO. 7 ILLINOIS FED. AID PROJECT		
Contract # 60407			SHEET NO. 5 of 558	



STATE OF ILLINOIS)
COUNTY OF COOK) S.S.

UTILITY(IES) SHOWN HEREON HAVE BEEN INVESTIGATED BY ASE IN ACCORDANCE WITH SUE INDUSTRY STANDARDS QUALITY LEVEL B (QLB). ALL OTHER INFORMATION SHOWN HAS BEEN PROVIDED BY OTHERS.

FIELD WORK WAS PERFORMED BETWEEN THE 29TH OF JULY AND 4TH DAY OF SEPTEMBER, A.D., 2008.

IN WITNESS WHEREOF, I HAVE HERETO SET MY HAND AND SEAL THIS 9TH DAY OF SEPTEMBER A.D., 2008. CHICAGO, IL.



Steven M. Rienks
STEVEN M. RIENKS ILLINOIS PROFESSIONAL
ENGINEER NUMBER 62-044619
MY LICENSE EXPIRES 11/30/2009

LEGEND

— T —	EXISTING UNDERGROUND TELEPHONE
— E —	EXISTING UNDERGROUND ELECTRIC
— G —	EXISTING UNDERGROUND GAS
— CTV —	EXISTING UNDERGROUND CABLE TV
— W —	EXISTING UNDERGROUND WATER
⊖	EXISTING UNDERGROUND WATER (PER UTILITY ATLAS MAPS)

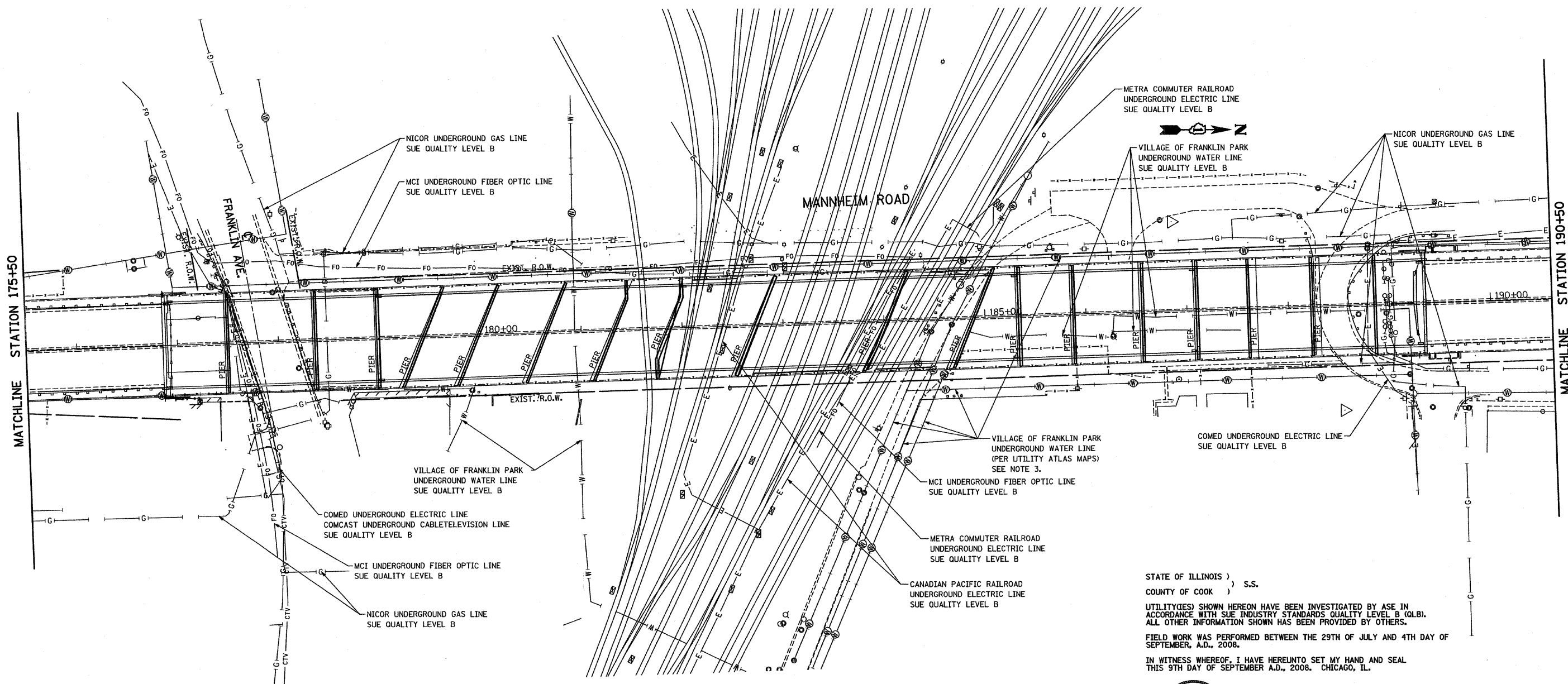
- NOTES:**
- HORIZONTAL CONTROL, VERTICAL CONTROL, CENTERLINE ALIGNMENT, AND TOPOGRAPHIC FEATURES WERE SUPPLIED BY ILLINOIS DEPARTMENT OF TRANSPORTATION, CONTRACT NUMBER 60407 DATED MAY 27, 2008.
 - RAILROAD UTILITIES WERE MARKED BY THE OWNER OF THE RAILROAD COMPANY.
 - SOME WATER MAINS WERE INDETERMINABLE. THEY ARE DRAWN USING THE ATLAS PROVIDED BY THE VILLAGE OF FRANKLIN PARK. THE FOLLOWING PAGES WERE USED: 20NE, 20SE, 21NW, AND 21SW.
 - AS OF SEPTEMBER 4, 2008, ASE HAS NOT RECEIVED AT&T UTILITY MAPS. THEREFORE, THEY ARE NOT SHOWN.

Rev. Sheet 10-13-09



REVISIONS	
NAME	DATE

ILLINOIS DEPARTMENT OF TRANSPORTATION
SUE INVESTIGATION OF UNDERGROUND UTILITIES
FAP 330 US 12/45 (MANNHEIM RD.) OVER
500 LINE RR & FRANKLIN AVE.
STRUCTURE NO. 016-2815
SECTION 465 VB-R-1 COOK COUNTY
STA. 183+33.30 DRAWN BY CTT
DATE 9/9/2008 CHECKED BY SMR



STATE OF ILLINOIS)
COUNTY OF COOK) S.S.

UTILITY(IES) SHOWN HEREON HAVE BEEN INVESTIGATED BY ASE IN ACCORDANCE WITH SUE INDUSTRY STANDARDS QUALITY LEVEL B (QLB). ALL OTHER INFORMATION SHOWN HAS BEEN PROVIDED BY OTHERS.

FIELD WORK WAS PERFORMED BETWEEN THE 29TH OF JULY AND 4TH DAY OF SEPTEMBER, A.D., 2008.

IN WITNESS WHEREOF, I HAVE HEREUNTO SET MY HAND AND SEAL THIS 9TH DAY OF SEPTEMBER A.D., 2008. CHICAGO, IL.



Steven M. Rienks
STEVEN M. RIENKS ILLINOIS PROFESSIONAL ENGINEER NUMBER 62-044619 MY LICENSE EXPIRES 11/30/2009

LEGEND

- T — EXISTING UNDERGROUND TELEPHONE
- E — EXISTING UNDERGROUND ELECTRIC
- G — EXISTING UNDERGROUND GAS
- CTV — EXISTING UNDERGROUND CABLE TELEVISION
- W — EXISTING UNDERGROUND WATER
- (W) — EXISTING UNDERGROUND WATER (PER UTILITY ATLAS MAPS)

NOTES:

- HORIZONTAL CONTROL, VERTICAL CONTROL, CENTERLINE ALIGNMENT, AND TOPOGRAPHIC FEATURES WERE SUPPLIED BY ILLINOIS DEPARTMENT OF TRANSPORTATION, CONTRACT NUMBER 60407 DATED MAY 27, 2008.
- RAILROAD UTILITIES WERE MARKED BY THE OWNER OF THE RAILROAD COMPANY.
- SOME WATER MAINS WERE INDETERMINABLE. THEY ARE DRAWN USING THE ATLAS PROVIDED BY THE VILLAGE OF FRANKLIN PARK. THE FOLLOWING PAGES WERE USED: 20NE, 20SE, 21NW, AND 21SW.
- AS OF SEPTEMBER 4, 2008, ASE HAS NOT RECEIVED AT&T UTILITY MAPS. THEREFORE, THEY ARE NOT SHOWN.

Rev. Sheet 10-13-09

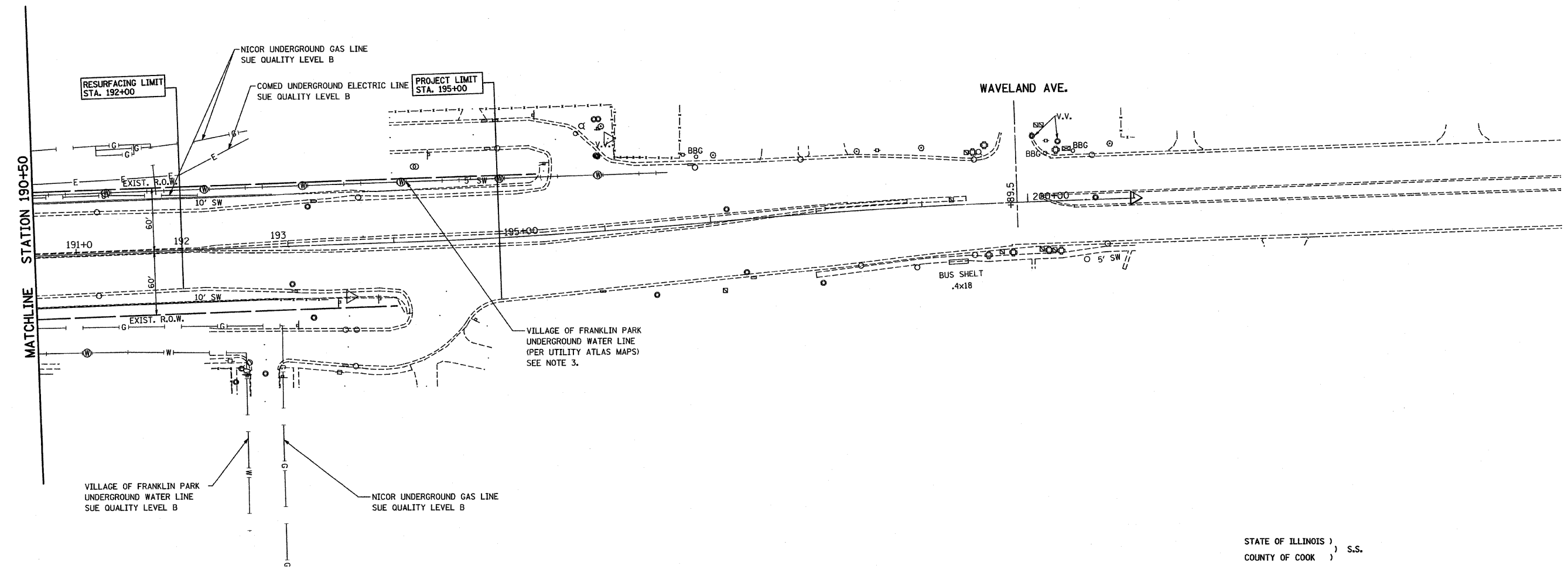
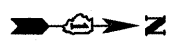


REVISIONS	
NAME	DATE

ILLINOIS DEPARTMENT OF TRANSPORTATION
SUE INVESTIGATION OF UNDERGROUND UTILITIES
FAP 330 US 12/45 (MANNHEIM RD.) OVER 500 LINE RR & FRANKLIN AVE.
STRUCTURE NO. 016-2815
SECTION 465 VB-R-1 COOK COUNTY
STA. 183+33.30 DRAWN BY CTT
DATE 9/9/2008 CHECKED BY SMR

UTIL-2

F.A.P.	SECTION	COUNTY	TOTAL SHEETS	SHEET NO.
330	465 VB-R-1	COOK	103	28
STA. 173+50 TO STA. 195+00		FED. ROAD DIST. NO. 7 ILLINOIS FED. AID PROJECT		
Contract # 60407			SHEET NO. 5 of 558	



VILLAGE OF FRANKLIN PARK UNDERGROUND WATER LINE SUE QUALITY LEVEL B

NICOR UNDERGROUND GAS LINE SUE QUALITY LEVEL B

STATE OF ILLINOIS)
COUNTY OF COOK) S.S.

UTILITY(IES) SHOWN HEREON HAVE BEEN INVESTIGATED BY ASE IN ACCORDANCE WITH SUE INDUSTRY STANDARDS QUALITY LEVEL B (QLB). ALL OTHER INFORMATION SHOWN HAS BEEN PROVIDED BY OTHERS.

FIELD WORK WAS PERFORMED BETWEEN THE 29TH OF JULY AND 4TH DAY OF SEPTEMBER, A.D., 2008.

IN WITNESS WHEREOF, I HAVE HEREUNTO SET MY HAND AND SEAL THIS 9TH DAY OF SEPTEMBER A.D., 2008. CHICAGO, IL.



Steven M. Rienks
STEVEN M. RIENKS - ILLINOIS PROFESSIONAL ENGINEER NUMBER 62-044619
MY LICENSE EXPIRES 11/30/2009

LEGEND

— T —	EXISTING UNDERGROUND TELEPHONE
— E —	EXISTING UNDERGROUND ELECTRIC
— G —	EXISTING UNDERGROUND GAS
— CTV —	EXISTING UNDERGROUND CABLE TV
— W —	EXISTING UNDERGROUND WATER
— (W) —	EXISTING UNDERGROUND WATER (PER UTILITY ATLAS MAPS)

- NOTES:**
- HORIZONTAL CONTROL, VERTICAL CONTROL, CENTERLINE ALIGNMENT, AND TOPOGRAPHIC FEATURES WERE SUPPLIED BY ILLINOIS DEPARTMENT OF TRANSPORTATION, CONTRACT NUMBER 60407 DATED MAY 27, 2008.
 - RAILROAD UTILITIES WERE MARKED BY THE OWNER OF THE RAILROAD COMPANY.
 - SOME WATER MAINS WERE INDETERMINABLE. THEY ARE DRAWN USING THE ATLAS PROVIDED BY THE VILLAGE OF FRANKLIN PARK. THE FOLLOWING PAGES WERE USED: 20NE, 20SE, 21NW, AND 21SW.
 - AS OF SEPTEMBER 4, 2008, ASE HAS NOT RECEIVED AT&T UTILITY MAPS. THEREFORE, THEY ARE NOT SHOWN.

△ Rev. Sheet 10-13-09



REVISIONS		ILLINOIS DEPARTMENT OF TRANSPORTATION SUE INVESTIGATION OF UNDERGROUND UTILITIES FAP 330 US 12/45 (MANNHEIM RD.) OVER 500 LINE RR & FRANKLIN AVE. STRUCTURE NO. 016-2815 SECTION 465 VB-R-1 COOK COUNTY STA. 183+33.30 DRAWN BY CTT DATE 9/9/2008 CHECKED BY SMR
NAME	DATE	