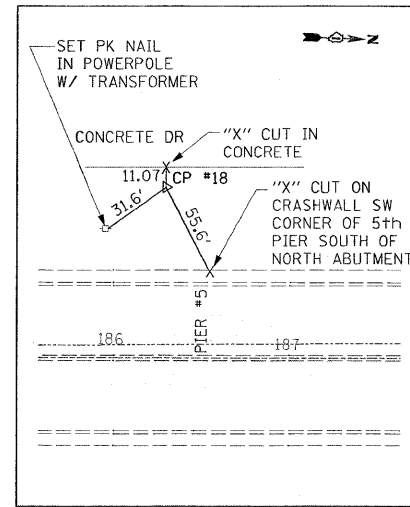
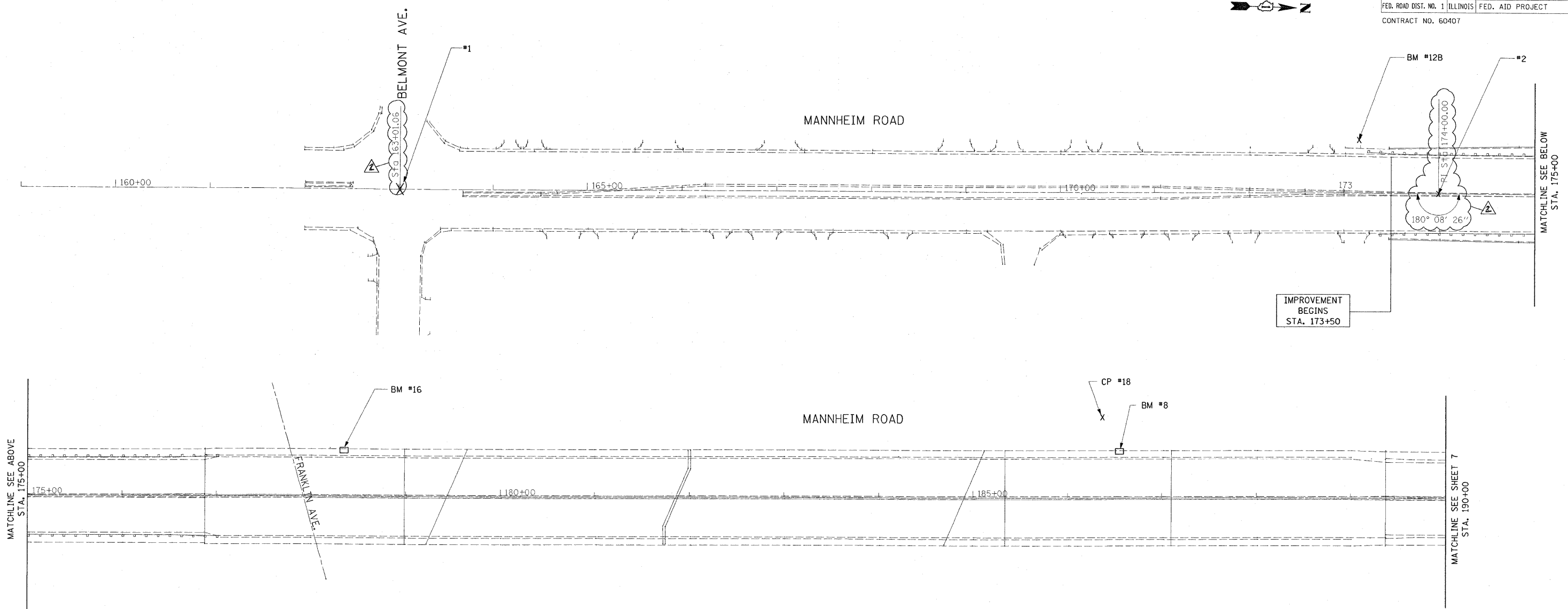
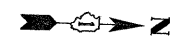
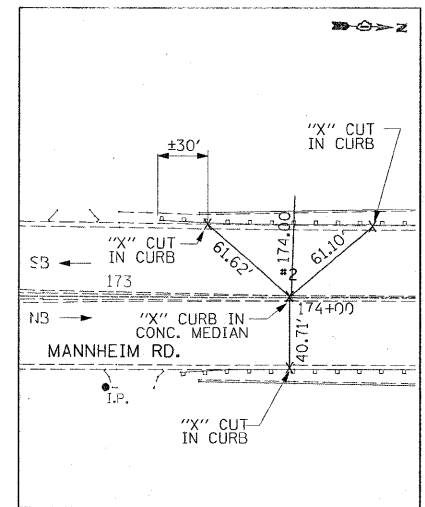


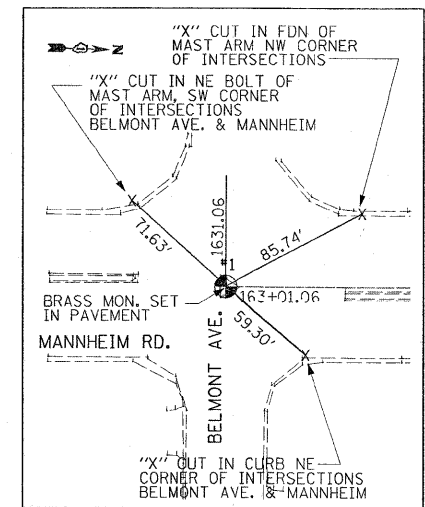
F.A.P. RTE.	SECTION	COUNTY	TOTAL SHEETS	SHEET NO.
330	465 VB-R-1	COOK	103	6
STA.	TO STA.			
FED. ROAD DIST. NO. 1	ILLINOIS	FED. AID PROJECT		
CONTRACT NO. 60407				



CP #18
 N=1922051.469
 E=1106022.526
 ELEV.=648.66
 SEE NOTE



#2
 STA. 174+00.00
 N=1920832.336
 E=1106147.057
 SEE NOTE

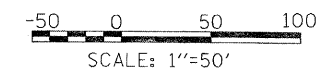


#1
 STA. 163+01.06
 N=1919733.841
 E=1106178.295
 SEE NOTE

BENCHMARK

- BM#8: "□" CUT ON CRASHWALL SW CORNER OF 5th PIER SOUTH OF NORTH ABUTMENT ELEV. 648.97
- BM#12B: "X" CUT ON NW BOLT (TOP ROW) FH WEST SIDE MANNHEIM RD. FIRST FH SOUTH OF BRIDGE OVER RR TRACKS & FRANKLIN AVE. ELEV. 650.81
- BM#16: "□" CUT IN SW CORNER OF CRASHWALL, 2nd PIER NORTH OF SOUTH ABUTMENT OF BRIDGE OVER RR ELEV. 649.76
- BM#16B: "X" CUT ON SE BOLT ON FH EAST SIDE OF MANNHEIM RD., SOUTH OF WAVELAND AVE. ELEV. 644.15

NOTE:
 NORTHINGS & EASTINGS AS SHOWN ON PLAN ARE PROJECT SPECIFIC AND SHALL BE USED FOR THIS PROJECT ONLY



REVISIONS	
NAME	DATE
ADDENDUM 2	10-19-09

ILLINOIS DEPARTMENT OF TRANSPORTATION
 FAP 330 US 12/45 (MANNHEIM RD.) OVER
 SOO LINE RR & FRANKLIN AVE.
ALIGNMENT, TIES AND BENCHMARKS
 SCALE: 1"=50'
 DATE: JULY 8, 2009
 DRAWN BY: MD
 CHECKED BY: PWK



L:\WORK\53346\cadd\drawings\Roadway\06align.dgn 10/21/2009