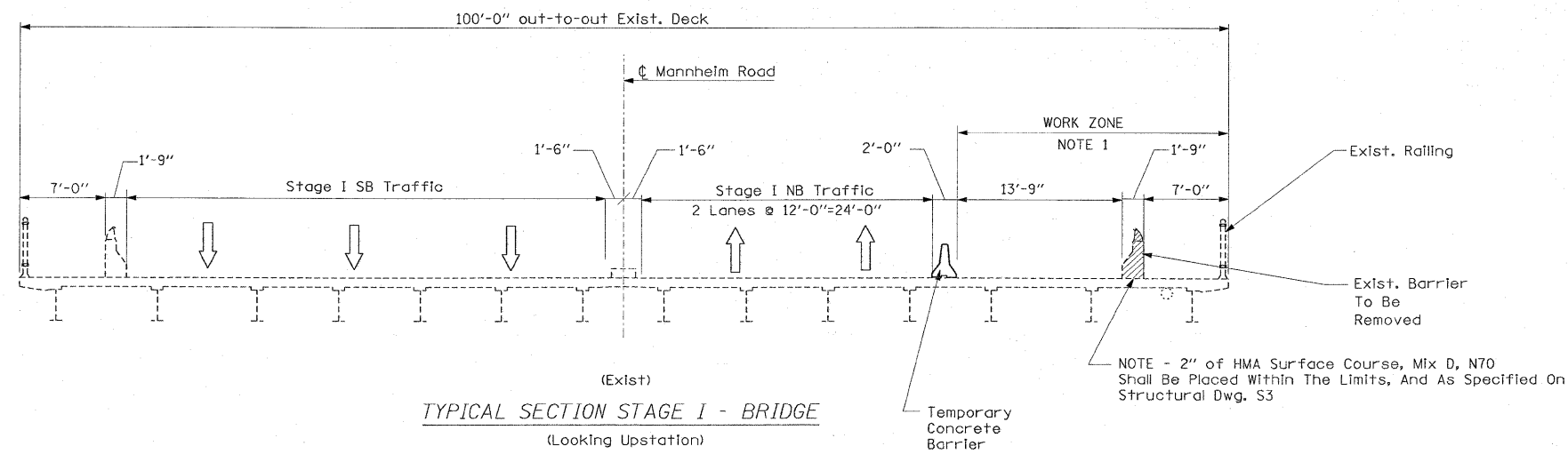


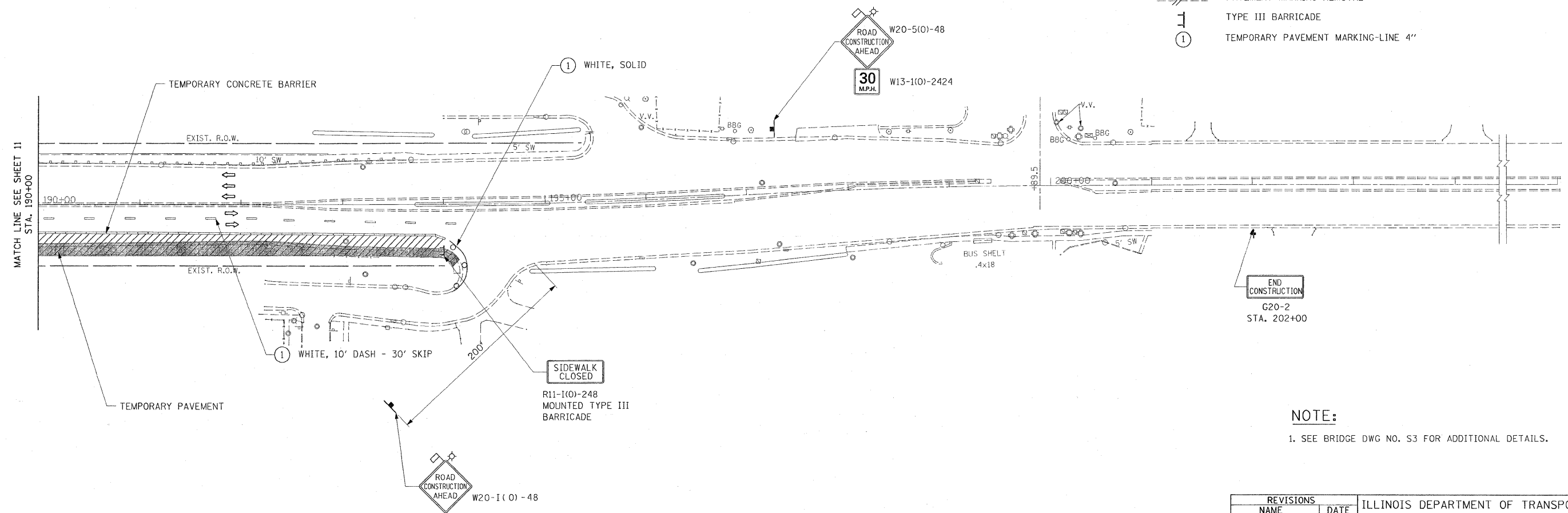
F.A.P. RTE.	SECTION	COUNTY	TOTAL SHEETS	SHEET NO.
330	465 VB-R-1	COOK	103	12
STA.		TO STA.		
FED. ROAD DIST. NO. 1		ILLINOIS	FED. AID PROJECT	
CONTRACT NO. 60407				



(Exist)  
**TYPICAL SECTION STAGE I - BRIDGE**  
(Looking Upstation)

**LEGEND**

- TEMPORARY PAVEMENT { 9" PCC BASE COURSE OR 12" HMA BINDER COURSE
- TEMPORARY CONCRETE BARRIER
- WORK ZONE
- DIRECTION OF TRAFFIC
- DRUM OR TYPE II PLASTIC BARRICADE WITH STEADY BURNING LIGHT, 50' C-C ON CURVE/TAPER 100' C-C ON TANGENT
- TRAFFIC SIGN
- PAVEMENT MARKING REMOVAL
- TYPE III BARRICADE
- TEMPORARY PAVEMENT MARKING-LINE 4"

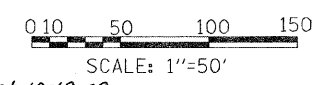


**NOTE:**  
1. SEE BRIDGE DWG NO. S3 FOR ADDITIONAL DETAILS.

MOT-5

REVISIONS	
NAME	DATE
Rev. 10-19-09	

ILLINOIS DEPARTMENT OF TRANSPORTATION  
FAP 330 US 12/45 (MANNHEIM RD.) OVER  
500 LINE RR & FRANKLIN AVE.  
**MAINTENANCE OF TRAFFIC  
STAGE I**  
SCALE: 1"= 50'  
DATE: JULY 8, 2009  
DRAWN BY: CJO  
CHECKED BY: PWK



**EARTH TECH | AECOM**

Rev. Sheet 10-19-09

L:\WORK\53346\cecd\drawings\Roadway\12MOT\stgl.dgn 10/21/2009