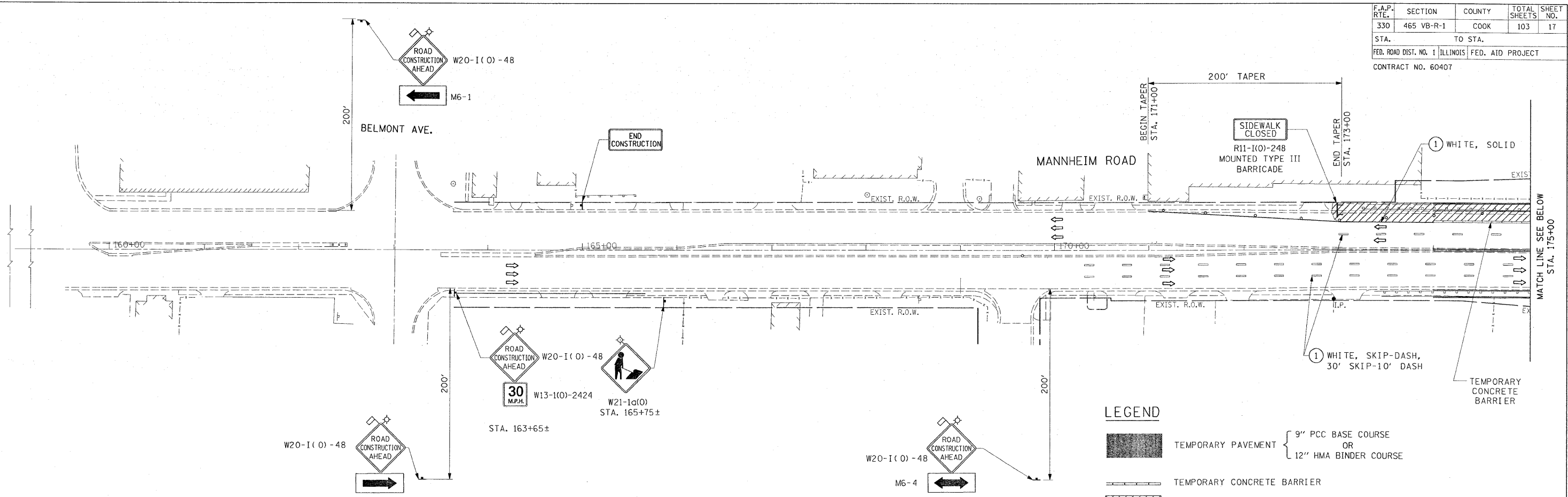
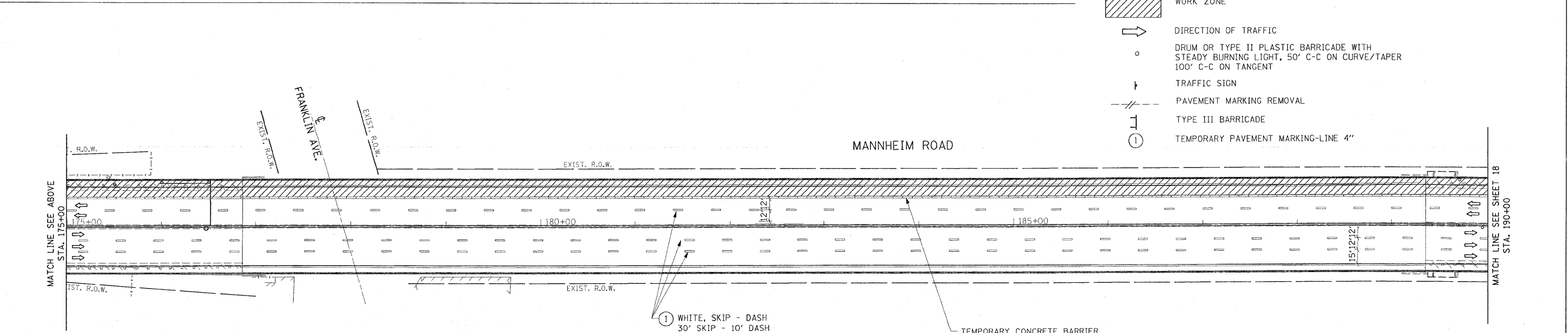


F.A.P. RTE.	SECTION	COUNTY	TOTAL SHEETS	SHEET NO.
330	465 VB-R-1	COOK	103	17
STA.		TO STA.		
FED. ROAD DIST. NO. 1 ILLINOIS FED. AID PROJECT				
CONTRACT NO. 60407				

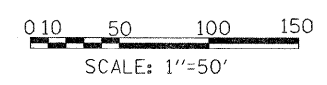


**LEGEND**

- TEMPORARY PAVEMENT { 9" PCC BASE COURSE OR 12" HMA BINDER COURSE }
- TEMPORARY CONCRETE BARRIER
- WORK ZONE
- DIRECTION OF TRAFFIC
- DRUM OR TYPE II PLASTIC BARRICADE WITH STEADY BURNING LIGHT, 50' C-C ON CURVE/TAPER 100' C-C ON TANGENT
- TRAFFIC SIGN
- PAVEMENT MARKING REMOVAL
- TYPE III BARRICADE
- TEMPORARY PAVEMENT MARKING-LINE 4"



L:\WORK\53346\cadd\drawings\Roadway\17MOT\stg4.dgn 10/21/2009



**EARTH TECH | AECOM**

Rev. Sheet 10-19-09

REVISIONS	
NAME	DATE
Rev. 10-19-09	

MOT-10  
 ILLINOIS DEPARTMENT OF TRANSPORTATION  
 FAP 330 US 12/45 (MANNHEIM RD.) OVER  
 500 LINE RR & FRANKLIN AVE.  
**MAINTENANCE OF TRAFFIC  
 STAGE IV**  
 SCALE: 1"= 50'  
 DATE: JULY 8, 2009  
 DRAWN BY: CJO  
 CHECKED BY: PWK