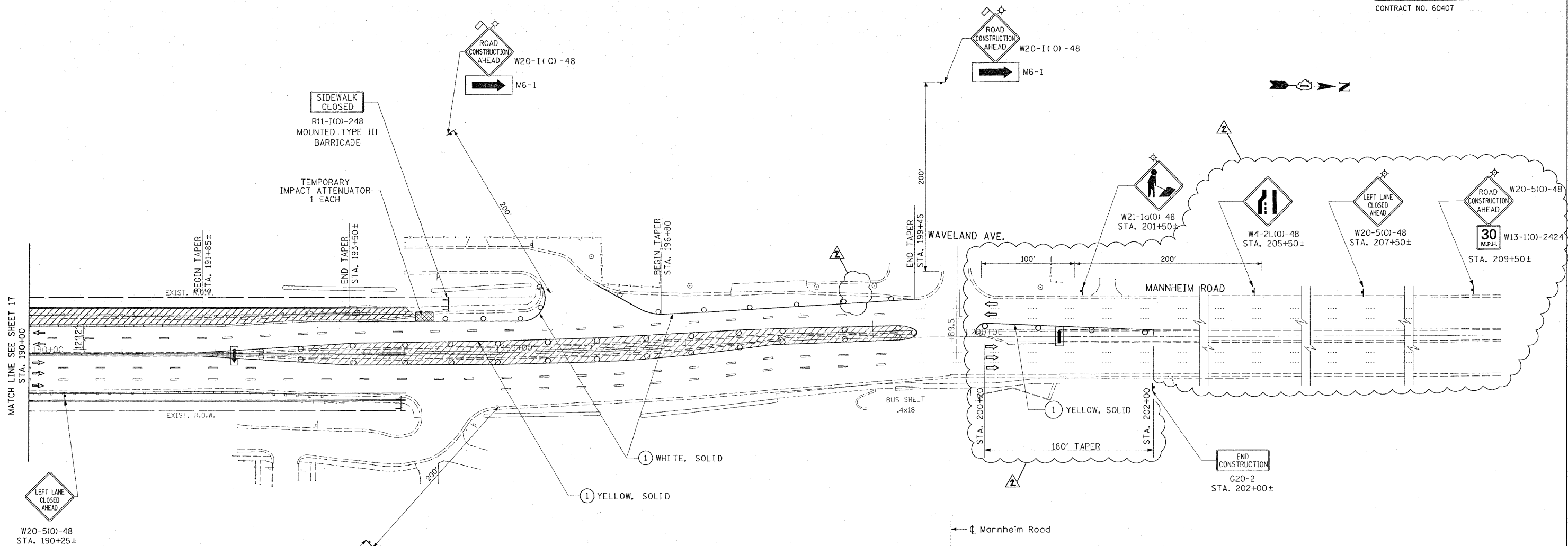
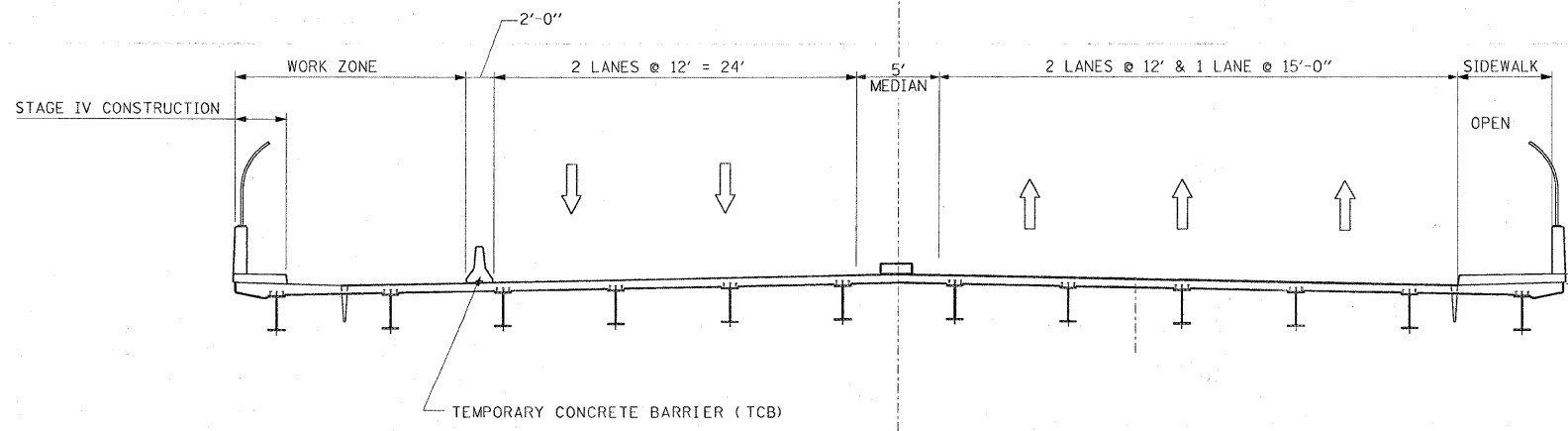


| | | | |
|-----------------------|------------|------------------|-----------------|
| F.A.P. RTE. | SECTION | COUNTY | TOTAL SHEET NO. |
| 330 | 465 VB-R-1 | COOK | 103 18 |
| STA. | TO STA. | | |
| FED. ROAD DIST. NO. 1 | ILLINOIS | FED. AID PROJECT | |
| CONTRACT NO. 60407 | | | |

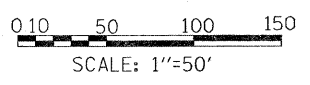


LEGEND

- TEMPORARY PAVEMENT { 9" PCC BASE COURSE OR 12" HMA BINDER COURSE
- TEMPORARY CONCRETE BARRIER
- WORK ZONE
- DIRECTION OF TRAFFIC
- DRUM OR TYPE II PLASTIC BARRICADE WITH STEADY BURNING LIGHT, 50' C-C ON CURVE/TAPER 100' C-C ON TANGENT
- TRAFFIC SIGN
- PAVEMENT MARKING REMOVAL
- TYPE III BARRICADE
- TEMPORARY PAVEMENT MARKING-LINE 4"



STAGE IV
(Looking Upstation)



EARTH TECH | AECOM

| REVISIONS | |
|------------|----------|
| NAME | DATE |
| ADDENDUM 2 | 10-19-09 |
| | |
| | |
| | |
| | |
| | |

ILLINOIS DEPARTMENT OF TRANSPORTATION
FAP 330 US 12/45 (MANNHEIM RD.) OVER
500 LINE RR & FRANKLIN AVE.
**MAINTENANCE OF TRAFFIC
STAGE IV**
SCALE: 1"= 50'
DATE: JULY 8, 2009
DRAWN BY: CJO
CHECKED BY: PWK

MOT-11

L:\WORK\53346\cadd\c-rw\ings\Roadway\18MDT.stg4.dgn 10/21/2009