

SUMMARY OF QUANTITIES

ITEM NO.	PAY ITEM	UNIT	80% FED. 20% STATE URBAN QUANTITY		CONSTRUCTION TYPE CODE	
			QUANTITY		ROAD 1000-2A	BRIDGE X571-2A
20101000	TEMPORARY FENCE	FOOT	4230		4230	
20700400	POROUS GRANULAR EMBANKMENT, SPECIAL	CU YD	333.5			333.5
28000400	PERIMETER EROSION BARRIER	FOOT	800		800	
31100300	SUB-BASE GRANULAR MATERIAL, TYPE A 4"	SQ YD	1827		1827	
31200500	STABILIZED SUB BASE - HOT-MIX ASPHALT, 4"	SQ YD	974		974	
40600100	BITUMINOUS MATERIALS (PRIME COAT)	GALLON	456		456	
40600400	MIXTURE FOR CRACKS, JOINTS, AND FLANGEWAYS	TON	1		1	
40601005	HOT-MIX ASPHALT REPLACEMENT OVER PATCHES	TON	1		1	
40603340	HOT-MIX ASPHALT SURFACE COURSE, MIX "D", N70	TON	145		43	102
40603595	POLYMERIZED HOT-MIX ASPHALT SURFACE COURSE, MIX "F", N90	TON	43		43	
42001200	PAVEMENT FABRIC	SQ YD	974		974	
42001300	PROTECTIVE COAT	SQ YD	2882		2882	
42001400	BRIDGE APPROACH PAVEMENT (SPECIAL)	SQ YD	654		654	
42001420	BRIDGE APPROACH PAVEMENT CONNECTOR (PCC)	SQ YD	974		974	
42400200	PORTLAND CEMENT CONCRETE SIDEWALK 5 INCH	SQ FT	13636		13636	
44000100	PAVEMENT REMOVAL	SQ YD	967		967	
44000500	COMBINATION CURB AND GUTTER REMOVAL	FOOT	4690		4690	
44000600	SIDEWALK REMOVAL	SQ FT	12998		12998	
44000700	APPROACH SLAB REMOVAL	SQ YD	508		508	
44002206	HOT-MIX ASPHALT REMOVAL OVER PATCHES, 1/2"	SQ YD	300		300	
44003100	MEDIAN REMOVAL	SQ FT	7578		7578	
44201353	CLASS C PATCHES, TYPE II, 10 INCH	SQ YD	20		20	
44201357	CLASS C PATCHES, TYPE III, 10 INCH	SQ YD	30		30	
44201359	CLASS C PATCHES, TYPE IV, 10 INCH	SQ YD	80		80	
44201765	CLASS D PATCHES, TYPE II, 10 INCH	SQ YD	20		20	
44201769	CLASS D PATCHES, TYPE III, 10 INCH	SQ YD	30		30	
44201771	CLASS D PATCHES, TYPE IV, 10 INCH	SQ YD	80		80	
44300200	STRIP REFLECTIVE CRACK CONTROL TREATMENT	FOOT	2242		2242	
50100200	REMOVAL OF EXISTING STRUCTURES	L SUM	1			1
50157300	PROTECTIVE SHIELD	SQ YD	6327			6327
50200100	STRUCTURE EXCAVATION	CU YD	4145			4145
50300225	CONCRETE STRUCTURES	CU YD	4002			4002
50300255	CONCRETE SUPERSTRUCTURE	CU YD	3996			3996
50300260	BRIDGE DECK GROOVING	SQ YD	10640			10640
50300280	CONCRETE ENCASEMENT	CU YD	24			24
50300300	PROTECTIVE COAT	SQ YD	14843			14843
50500305	ERECTING STRUCTURAL STEEL	L SUM	1			1
50500505	STUD SHEAR CONNECTORS	EACH	47796			47796
50800205	REINFORCEMENT BARS, EPOXY COATED	POUND	1,486,530			1,486,530
50800515	BAR SPLICERS	EACH	5578			5578
50901730	BRIDGE FENCE RAILING	FOOT	2490			2490
51100100	SLOPE WALL 4 INCH	SQ YD	693			693
20200100	EARTH EXCAVATION	CU YD	345			345

LEGEND

• Special Provision

△ Non-Participating

ITEM NO.	PAY ITEM	UNIT	80% FED. 20% STATE URBAN QUANTITY		CONSTRUCTION TYPE CODE	
			QUANTITY		ROAD 1000-2A	BRIDGE X571-2A
51201400	FURNISHING STEEL PILES HP10X42	FOOT	2672			2672
51201800	FURNISHING STEEL PILES HP14X73	FOOT	8600			8600
51202305	DRIVING PILES	FOOT	11272			11272
51203400	TEST PILE STEEL HP10X42	EACH	2			2
51203800	TEST PILE STEEL HP14X73	EACH	4			4
51205200	TEMPORARY SHEET PILING	SQ FT	3886			3886
51500100	NAME PLATES	EACH	1			1
52000110	PREFORMED JOINT STRIP SEAL	FOOT	200			200
52100010	ELASTOMERIC BEARING ASSEMBLY, TYPE I	EACH	96			96
52100020	ELASTOMERIC BEARING ASSEMBLY, TYPE II	EACH	72			72
52100520	ANCHOR BOLTS, 1"	EACH	312			312
52100540	ANCHOR BOLTS, 1/2"	EACH	96			96
55039700	STORM SEWERS TO BE CLEANED	FOOT	400		400	
58700300	CONCRETE SEALER	SQ FT	12792			12792
59100100	GEOCOMPOSITE WALL DRAIN	SQ YD	133			133
60109580	PIPE UNDERDRAINS FOR STRUCTURES 4"	FOOT	207			207
60300105	FRAMES AND GRATES TO BE ADJUSTED	EACH	6		6	
60300305	FRAMES AND LIDS TO BE ADJUSTED	EACH	7		7	
60605000	COMBINATION CONCRETE CURB AND GUTTER, TYPE B-6.24	FOOT	1433		1433	
60605900	COMBINATION CONCRETE CURB AND GUTTER, TYPE B-9.12	FOOT	1980		1980	
60618300	CONCRETE MEDIAN SURFACE, 4 INCH	SQ FT	7365		7365	
60620800	CONCRETE MEDIAN, TYPE SB-9.12	SQ FT	2312		2312	
63200310	GUARDRAIL REMOVAL	FOOT	1515		1515	
67000400	ENGINEER'S FIELD OFFICE, TYPE A	CAL MO	24		24	
67100100	MOBILIZATION	L SUM	1		1	
70101800	TRAFFIC CONTROL AND PROTECTION, (SPECIAL)	L SUM	1		1	
70103815	TRAFFIC CONTROL SURVEILLANCE	CAL DA	480		480	
70106800	CHANGEABLE MESSAGE SIGN	CAL MO	24		24	
70300100	SHORT-TERM PAVEMENT MARKING	FOOT	8200		8200	
70300220	TEMPORARY PAVEMENT MARKING - LINE 4"	FOOT	21538		13568	7970
70300500	PAVEMENT MARKING TAPE, TYPE III	FOOT	8200		8200	
70301000	WORK ZONE PAVEMENT MARKING REMOVAL	SQ FT	7560		4083	3477
70400100	TEMPORARY CONCRETE BARRIER	FOOT	6800		2270	4530
70400200	RELOCATE TEMPORARY CONCRETE BARRIER	FOOT	6800		2270	4530
78000200	THERMOPLASTIC PAVEMENT MARKING - LINE 4"	FOOT	2763		2763	
78003110	PREFORMED PLASTIC PAVEMENT MARKING, TYPE B - LINE 4"	FOOT	5937			5937
78100100	RAISED REFLECTIVE PAVEMENT MARKER	EACH	104		104	
78100105	RAISED REFLECTIVE PAVEMENT MARKER (BRIDGE)	EACH	144			144
78200100	MONODIRECTIONAL PRISMATIC BARRIER REFLECTOR	EACH	131		39	92
X0320870	BRACED EXCAVATION	CU YD	919.9			919.9
X0322256	TEMPORARY INFORMATION SIGNING	SQ FT	438		438	
X0323080	DRAINAGE SCUPPERS, DS-12	EACH	16			16
X0323988	TEMPORARY SOIL RETENTION SYSTEM	SQ FT	825			825
66900200	NON-SPECIAL WASTE DISPOSAL	CU YD	2,800		2,800	
66900450	SPECIAL WASTE PLANS AND REPORT	L SUM	1		1	
66900530	SOIL DISPOSAL ANALYSIS	EACH	2		2	

○ Specialty Items

△ Rev. 10-27-09
 △ Rev. 10-13-09

EARTH TECH | AECOM

REVISIONS	
NAME	DATE

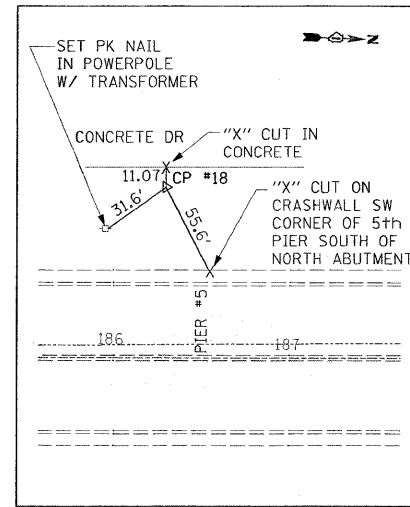
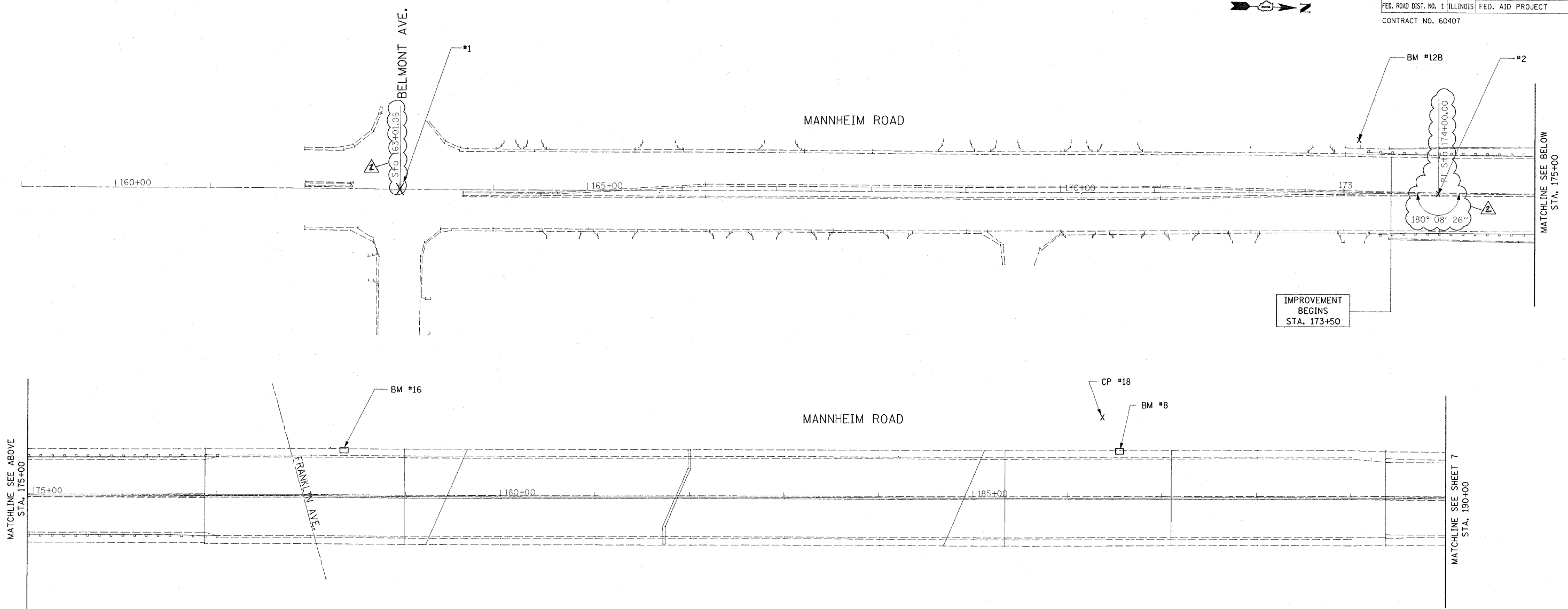
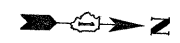
ILLINOIS DEPARTMENT OF TRANSPORTATION
 FAP 330 US 12/45 (MANNHEIM RD.) OVER
 500 LINE RR & FRANKLIN AVE.

SUMMARY OF QUANTITIES

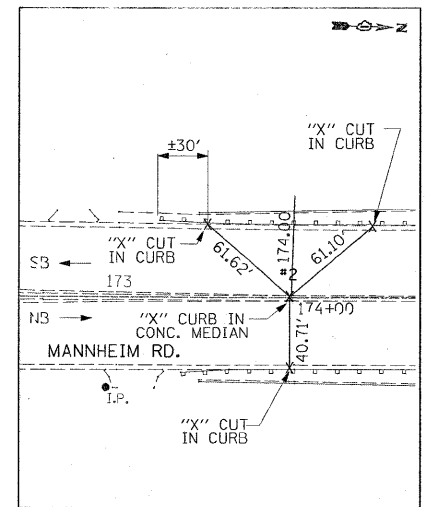
SCALE:
 DATE: JULY 8, 2009

DRAWN BY: CJO
 CHECKED BY: PWK

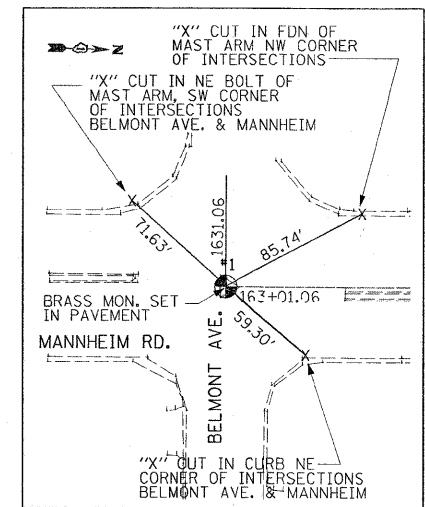
F.A.P. RTE.	SECTION	COUNTY	TOTAL SHEETS	SHEET NO.
330	465 VB-R-1	COOK	103	6
STA.	TO STA.			
FED. ROAD DIST. NO. 1	ILLINOIS	FED. AID PROJECT		
CONTRACT NO. 60407				



CP #18
 N=1922051.469
 E=1106022.526
 ELEV.=648.66
 SEE NOTE



#2
 STA. 174+00.00
 N=1920832.336
 E=1106147.057
 SEE NOTE

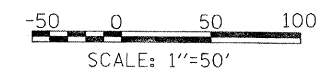


#1
 STA. 163+01.06
 N=1919733.841
 E=1106178.295
 SEE NOTE

BENCHMARK

- BM#8: "□" CUT ON CRASHWALL SW CORNER OF 5th PIER SOUTH OF NORTH ABUTMENT ELEV. 648.97
- BM#12B: "X" CUT ON NW BOLT (TOP ROW) FH WEST SIDE MANNHEIM RD. FIRST FH SOUTH OF BRIDGE OVER RR TRACKS & FRANKLIN AVE. ELEV. 650.81
- BM#16: "□" CUT IN SW CORNER OF CRASHWALL, 2nd PIER NORTH OF SOUTH ABUTMENT OF BRIDGE OVER RR ELEV. 649.76
- BM#16B: "X" CUT ON SE BOLT ON FH EAST SIDE OF MANNHEIM RD., SOUTH OF WAVELAND AVE. ELEV. 644.15

NOTE:
 NORTHINGS & EASTINGS AS SHOWN ON PLAN ARE PROJECT SPECIFIC AND SHALL BE USED FOR THIS PROJECT ONLY



REVISIONS	
NAME	DATE
ADDENDUM 2	10-19-09

ILLINOIS DEPARTMENT OF TRANSPORTATION
 FAP 330 US 12/45 (MANNHEIM RD.) OVER
 500 LINE RR & FRANKLIN AVE.

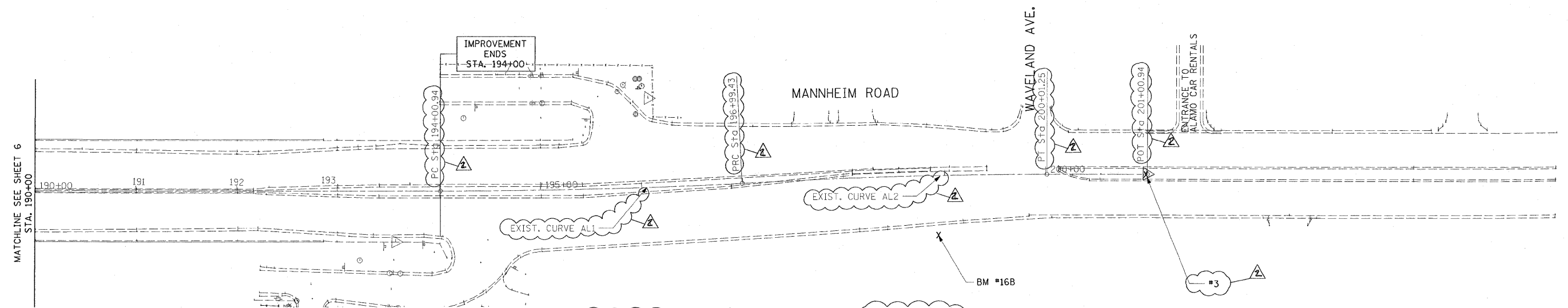
ALIGNMENT, TIES AND BENCHMARKS

SCALE: 1"=50'
 DATE: JULY 8, 2009
 DRAWN BY: MD
 CHECKED BY: PWK



L:\WORK\53346\cadd\drawings\Roadway\06align.dgn 10/21/2009

F.A.P. RTE.	SECTION	COUNTY	TOTAL SHEETS	SHEET NO.
330	465 VB-R-1	COOK	103	7
STA.	TO STA.			
FED. ROAD DIST. NO. 1 ILLINOIS FED. AID PROJECT				
CONTRACT NO. 60407				



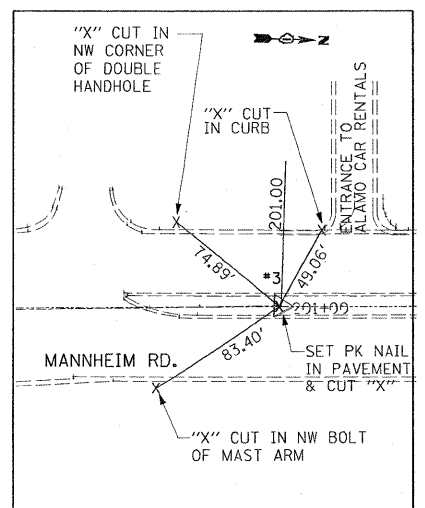
EXIST. CURVE AL1
 PI STA. = 195+50.23
 N=1922980.816
 E=1106080.685
 $\Delta = 3^\circ 14' 15''$ (LT)
 $D = 1^\circ 05' 05''$
 $R = 5,282.70'$
 $T = 149.28'$
 $L = 298.49'$
 $E = 2.11'$
 P.C. STA. = 194+00.94
 N=1922832.326
 E=1106085.272
 P.R.C. STA. = 196+99.43
 N=1932130.248
 E=1106067.552

EXIST. CURVE AL2
 PI STA. = 198+50.38
 N=192382.273
 E=1106054.244
 $\Delta = 3^\circ 14' 02''$ (RT)
 $D = 1^\circ 04' 17''$
 $R = 5,347.43'$
 $T = 150.95'$
 $L = 301.82'$
 $E = 2.13'$
 P.R.C. STA. = 196+99.43
 N=1932130.248
 E=1106067.552
 P.T. STA. = 200+01.25
 N=1923431.504
 E=1106049.729

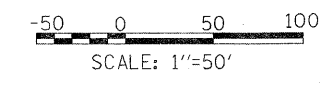
BENCHMARK

- BM#8: "X" CUT ON CRASHWALL SW CORNER OF 5th PIER SOUTH OF NORTH ABUTMENT ELEV. 648.97
- BM#12B: "X" CUT ON NW BOLT (TOP ROW) FH WEST SIDE MANNHEIM RD. FIRST FH SOUTH OF BRIDGE OVER RR TRACKS & FRANKLIN AVE. ELEV. 650.81
- BM#16: "X" CUT IN SW CORNER OF CRASHWALL, 2nd PIER NORTH OF SOUTH ABUTMENT OF BRIDGE OVER RR ELEV. 649.76
- BM#16B: "X" CUT ON SE BOLT ON FH EAST SIDE OF MANNHEIM RD., SOUTH OF WAVELAND AVE. ELEV. 644.15

NOTE:
 NORTHINGS & EASTINGS AS SHOWN ON PLAN ARE PROJECT SPECIFIC AND SHALL BE USED FOR THIS PROJECT ONLY



#3
 N=1923529.9813
 E=1106047.2742
 SEE NOTE



AT-02

REVISIONS	
NAME	DATE
ADDENDUM 2	10-19-09

ILLINOIS DEPARTMENT OF TRANSPORTATION
 FAP 330 US 12/45 (MANNHEIM RD.) OVER
 500 LINE RR & FRANKLIN AVE.

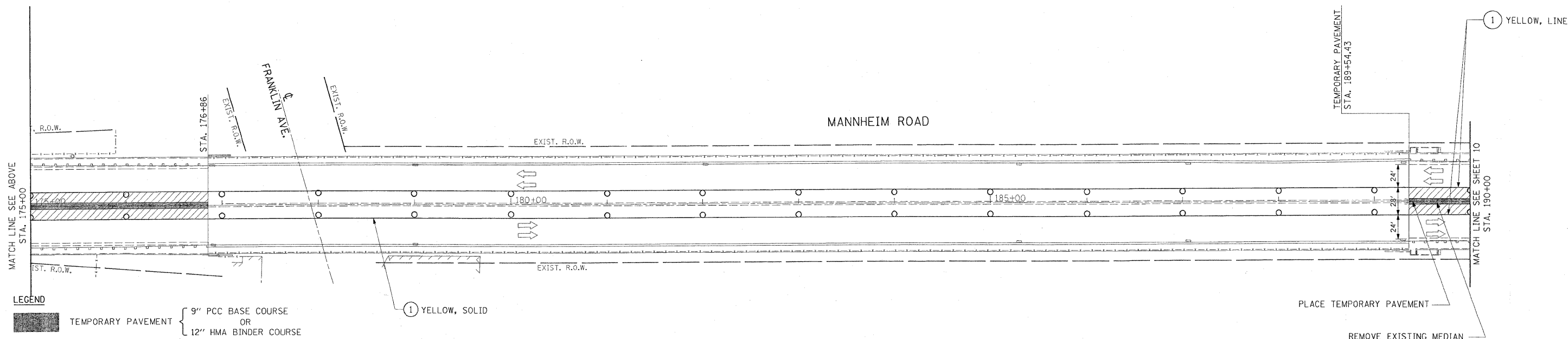
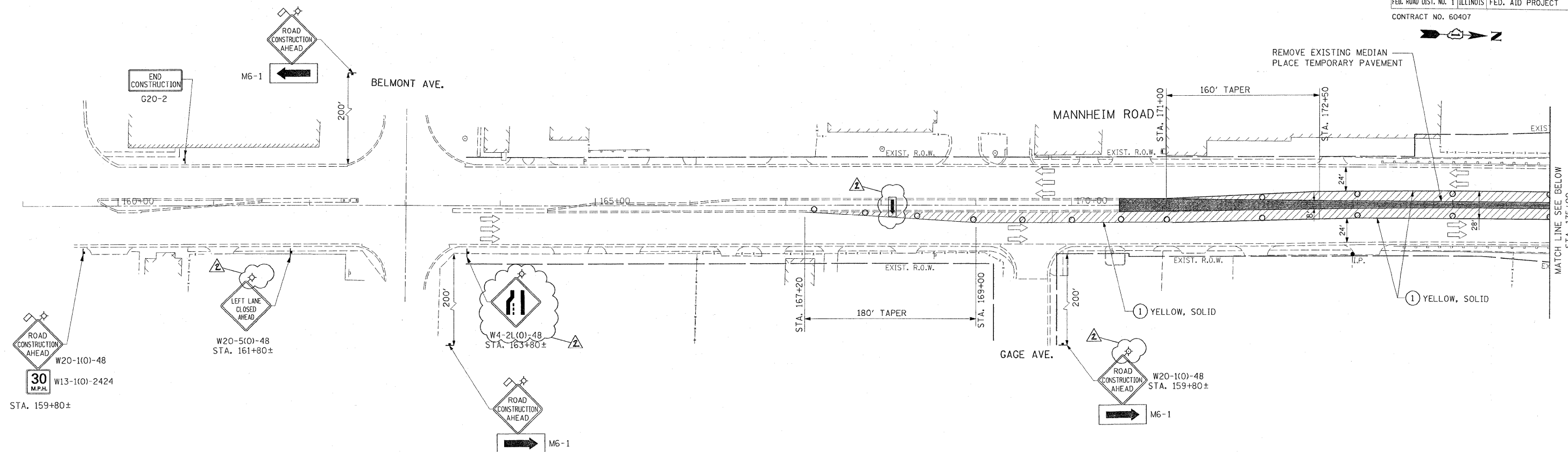
ALIGNMENT, TIES AND BENCHMARKS

SCALE: 1"=50'
 DATE: JULY 8, 2009
 DRAWN BY: MD
 CHECKED BY: PWK

EARTH TECH | AECOM

L:\WORK\53346\cadd\drawings\Roadway\07.align.dgn
 10/21/2009

F.A.P. RTE.	SECTION	COUNTY	TOTAL SHEETS	SHEET NO.
330	465 VB-R-1	COOK	103	9
STA.	TO STA.			
FED. ROAD DIST. NO. 1	ILLINOIS FED. AID PROJECT			
CONTRACT NO. 60407				



- LEGEND**
- TEMPORARY PAVEMENT { 9" PCC BASE COURSE OR 12" HMA BINDER COURSE
 - ARROW BOARD
 - DRUM OR TYPE II PLASTIC BARRICADE WITH STEADY BURNING LIGHT, 50' C-C ON CURVE/TAPER 100' C-C ON TANGENT
 - WORK ZONE
 - DIRECTION OF TRAFFIC
 - TEMPORARY PAVEMENT MARKING-LINE 4"

NOTE:
PAVEMENT MARKINGS SHALL BE INSTALLED AT ALL MEDIAN REMOVAL AND TEMPORARY PAVEMENT LOCATIONS. THE PAVEMENT MARKING SHALL CONSIST OF A 4" SOLID YELLOW EDGE LINE ALONG THE LEFT EDGE OF THE INNER LANE

0 10 50 100 150
SCALE: 1"=50'

EARTH TECH | AECOM

REVISIONS	
NAME	DATE
ADDENDUM 2	10-19-09

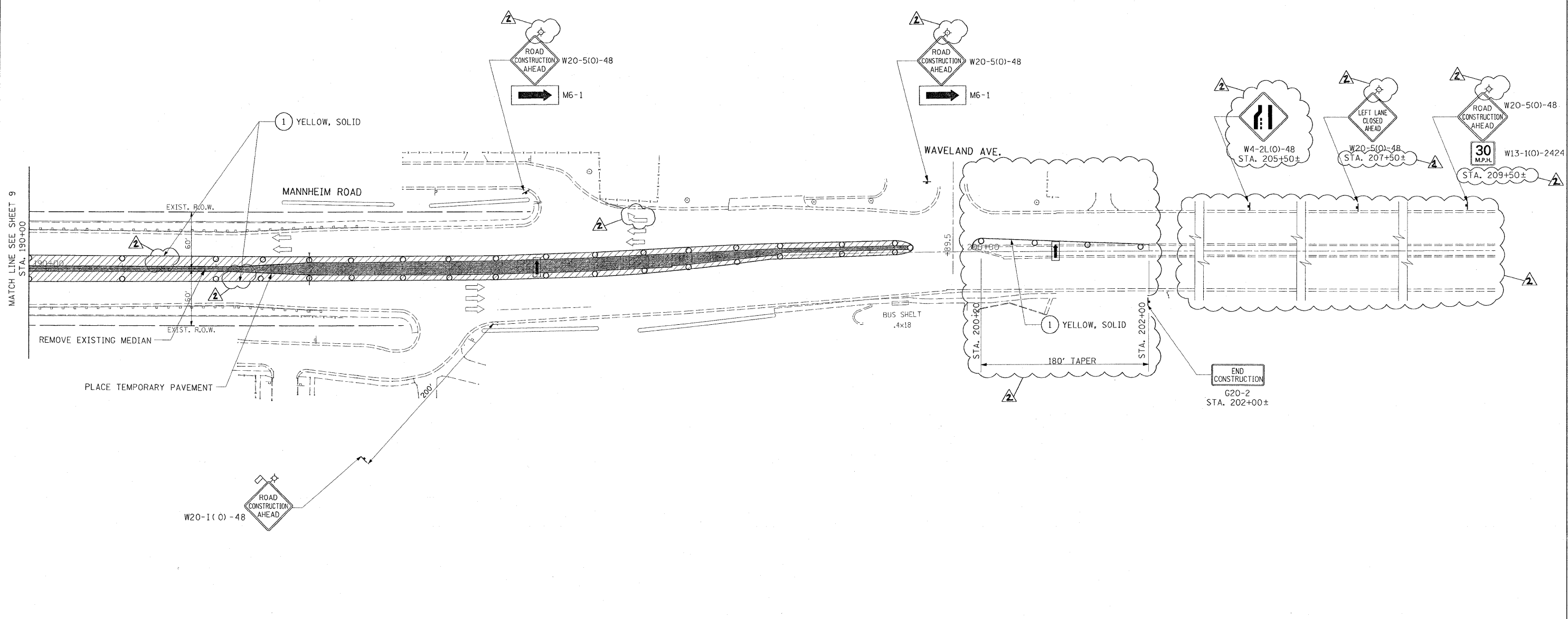
ILLINOIS DEPARTMENT OF TRANSPORTATION
FAP 330 US 12/45 (MANNHEIM RD.) OVER
500 LINE RR & FRANKLIN AVE.

MAINTENANCE OF TRAFFIC
PRE-STAGE

SCALE: 1" = 50'
DATE: JULY 8, 2009

DRAWN BY: CJO
CHECKED BY: PWK

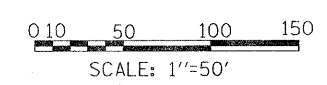
F.A.P. RTE.	SECTION	COUNTY	TOTAL SHEETS	SHEET NO.
330	465 VB-R-1	COOK	103	10
STA.	TO STA.			
FED. ROAD DIST. NO. 1 ILLINOIS FED. AID PROJECT				
CONTRACT NO. 60407				



MATCH LINE SEE SHEET 9
STA. 190+00

- LEGEND**
- TEMPORARY PAVEMENT { 9" PCC BASE COURSE OR 12" HMA BINDER COURSE
 - ARROW BOARD
 - DRUM OR TYPE II PLASTIC BARRICADE WITH STEADY BURNING LIGHT, 50' C-C ON CURVE/TAPER 100' C-C ON TANGENT
 - WORK ZONE
 - DIRECTION OF TRAFFIC
 - TEMPORARY PAVEMENT MARKING-LINE 4"

NOTE:
PAVEMENT MARKINGS SHALL BE INSTALLED AT ALL MEDIAN REMOVAL AND TEMPORARY PAVEMENT LOCATIONS. THE PAVEMENT MARKING SHALL CONSIST OF A 4" SOLID YELLOW EDGE LINE ALONG THE LEFT EDGE OF THE INNER LANE



EARTH TECH | AECOM

REVISIONS	
NAME	DATE
ADDENDUM 2	10-19-09

ILLINOIS DEPARTMENT OF TRANSPORTATION
FAP 330 US 12/45 (MANNHEIM RD.) OVER
500 LINE RR & FRANKLIN AVE.

**MAINTENANCE OF TRAFFIC
PRE-STAGE**

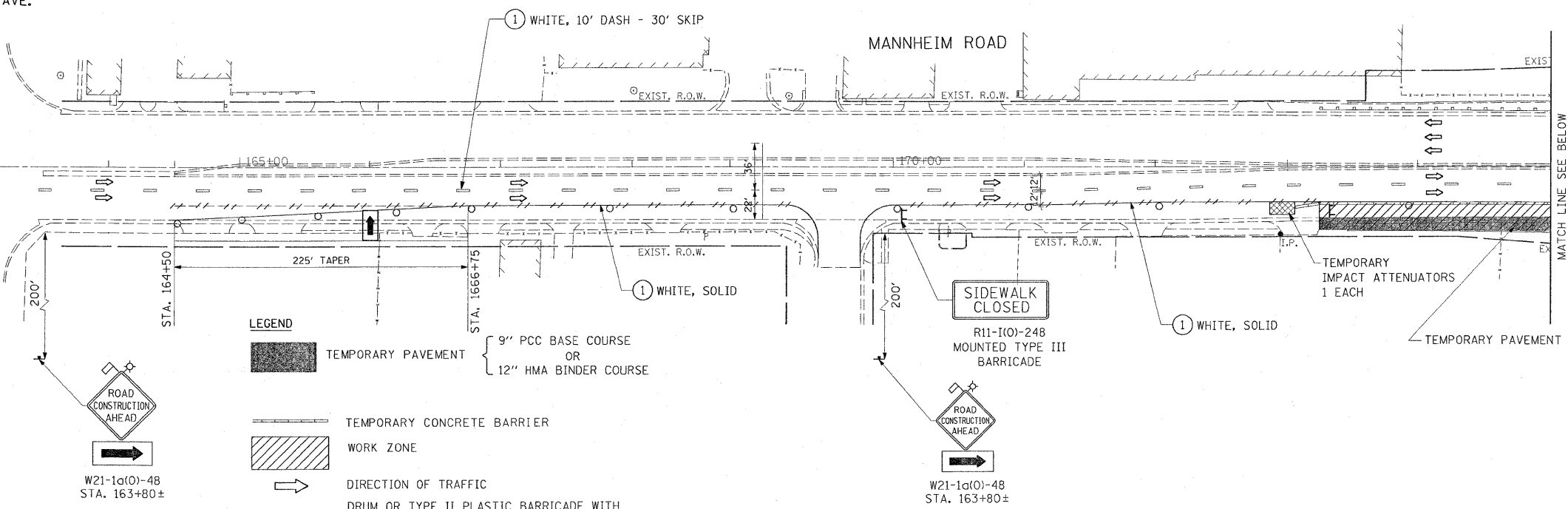
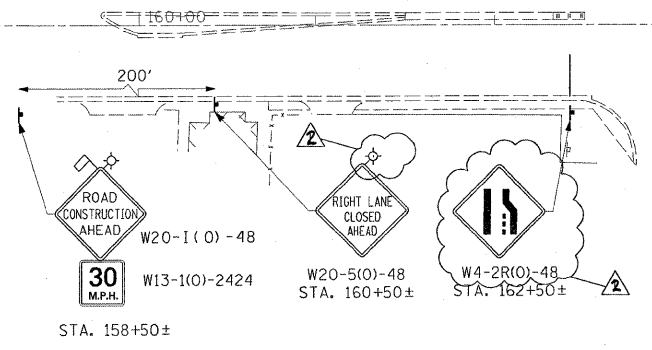
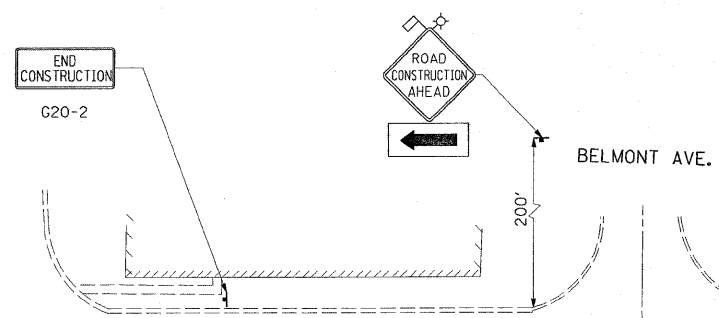
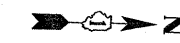
SCALE: 1" = 50'
DATE: JULY 8, 2009

DRAWN BY: CJO
CHECKED BY: PWK

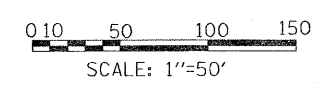
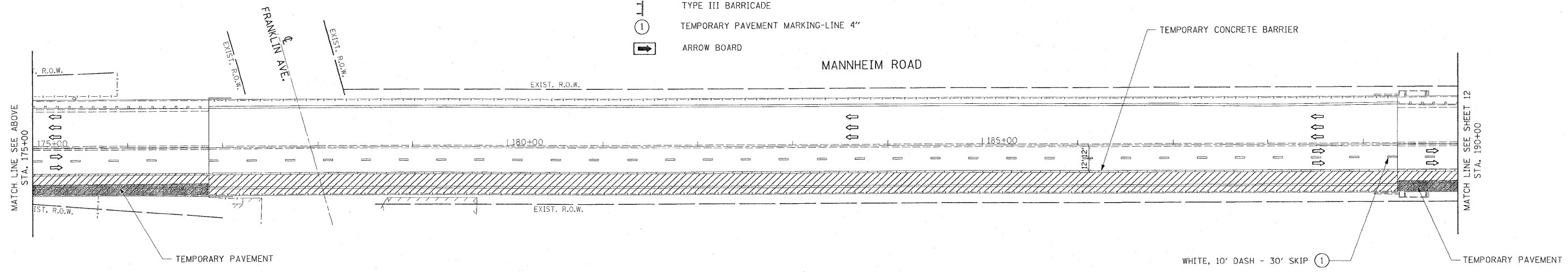
MOT-3

L:\WORK\53346\cadd\drawings\Roadway\10\MDT\prstg.dgn
10/21/2009

F.A.P. RTE.	SECTION	COUNTY	TOTAL SHEETS	SHEET NO.
330	465 VB-R-1	COOK	103	11
STA.		TO STA.		
FED. ROAD DIST. NO. 1		ILLINOIS FED. AID PROJECT		
CONTRACT NO. 60407				



- LEGEND**
- TEMPORARY PAVEMENT { 9" PCC BASE COURSE OR 12" HMA BINDER COURSE
 - TEMPORARY CONCRETE BARRIER
 - WORK ZONE
 - DIRECTION OF TRAFFIC
 - DRUM OR TYPE II PLASTIC BARRICADE WITH STEADY BURNING LIGHT, 50' C-C ON CURVE/TAPER 100' C-C ON TANGENT
 - TRAFFIC SIGN
 - PAVEMENT MARKING REMOVAL
 - TYPE III BARRICADE
 - TEMPORARY PAVEMENT MARKING-LINE 4"
 - ARROW BOARD



EARTH TECH | AECOM

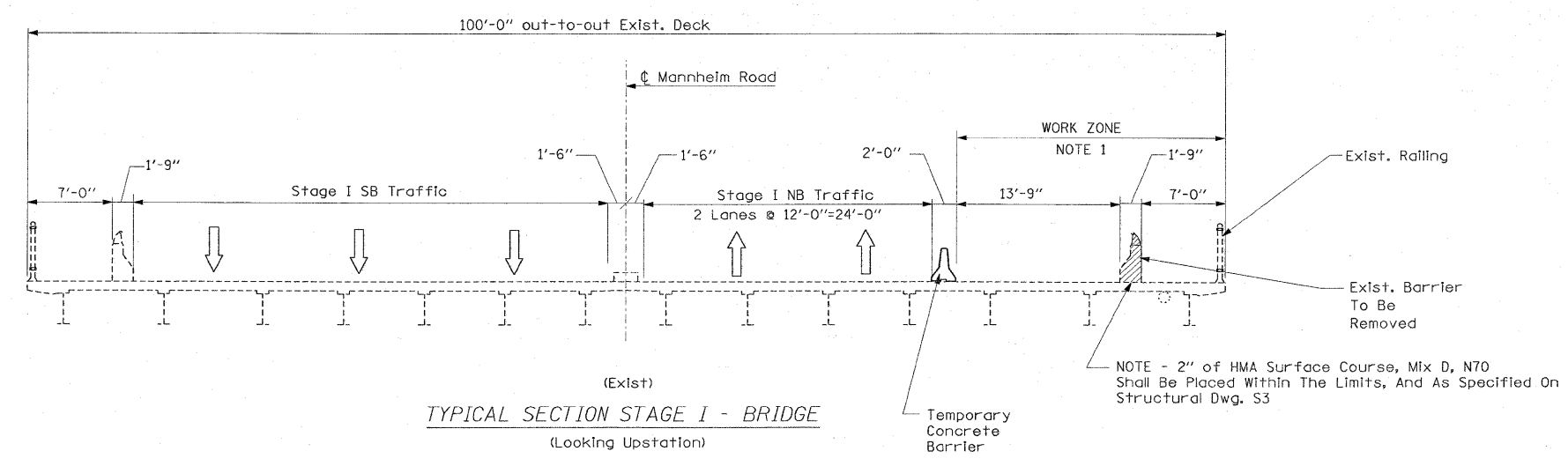
REVISIONS	
NAME	DATE
ADDENDUM 2	10-19-09

ILLINOIS DEPARTMENT OF TRANSPORTATION
 FAP 330 US 12/45 (MANNHEIM RD.) OVER
 500 LINE RR & FRANKLIN AVE.
**MAINTENANCE OF TRAFFIC
 STAGE I**
 SCALE: 1" = 50'
 DATE: JULY 8, 2009
 DRAWN BY: CJO
 CHECKED BY: PWK

L:\WORK\53346\cadd\drawings\Roadway\11MOT\stg1.dgn 10/21/2009

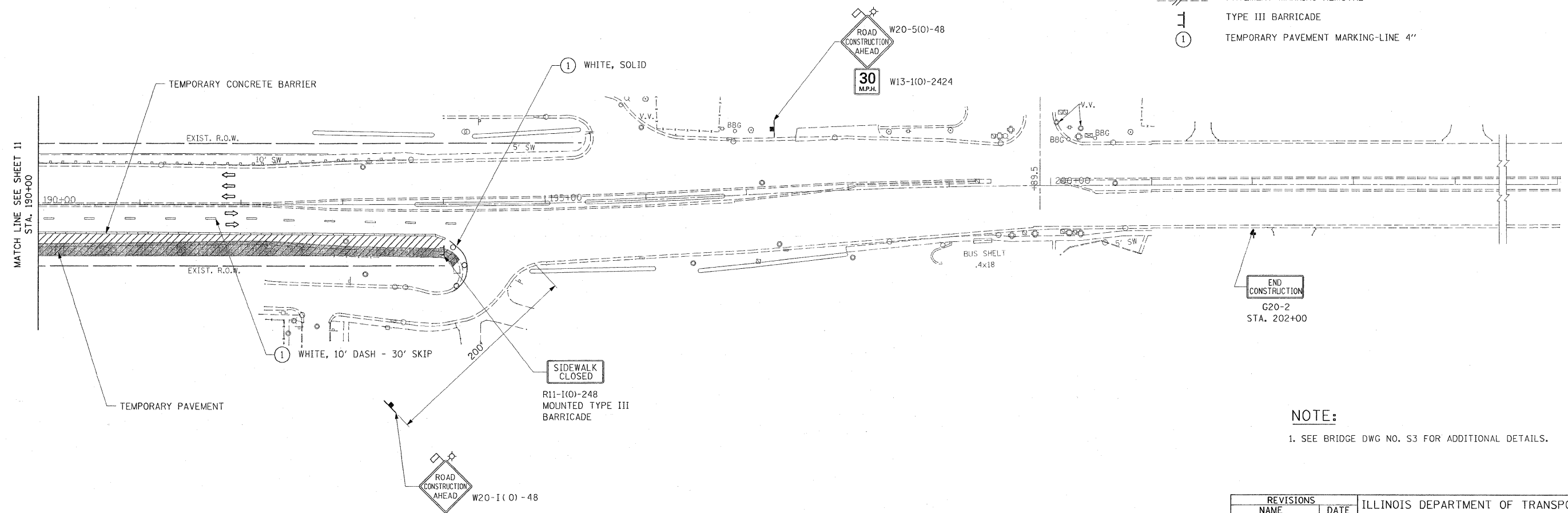
MOT-4

F.A.P. RTE.	SECTION	COUNTY	TOTAL SHEETS	SHEET NO.
330	465 VB-R-1	COOK	103	12
STA.		TO STA.		
FED. ROAD DIST. NO. 1		ILLINOIS	FED. AID PROJECT	
CONTRACT NO. 60407				



LEGEND

- TEMPORARY PAVEMENT { 9" PCC BASE COURSE OR 12" HMA BINDER COURSE
- TEMPORARY CONCRETE BARRIER
- WORK ZONE
- DIRECTION OF TRAFFIC
- DRUM OR TYPE II PLASTIC BARRICADE WITH STEADY BURNING LIGHT, 50' C-C ON CURVE/TAPER 100' C-C ON TANGENT
- TRAFFIC SIGN
- PAVEMENT MARKING REMOVAL
- TYPE III BARRICADE
- TEMPORARY PAVEMENT MARKING-LINE 4"

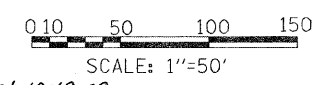


NOTE:
1. SEE BRIDGE DWG NO. S3 FOR ADDITIONAL DETAILS.

MOT-5

REVISIONS	
NAME	DATE
Rev. 10-19-09	

ILLINOIS DEPARTMENT OF TRANSPORTATION
FAP 330 US 12/45 (MANNHEIM RD.) OVER
500 LINE RR & FRANKLIN AVE.
**MAINTENANCE OF TRAFFIC
STAGE I**
SCALE: 1"= 50'
DATE: JULY 8, 2009
DRAWN BY: CJO
CHECKED BY: PWK

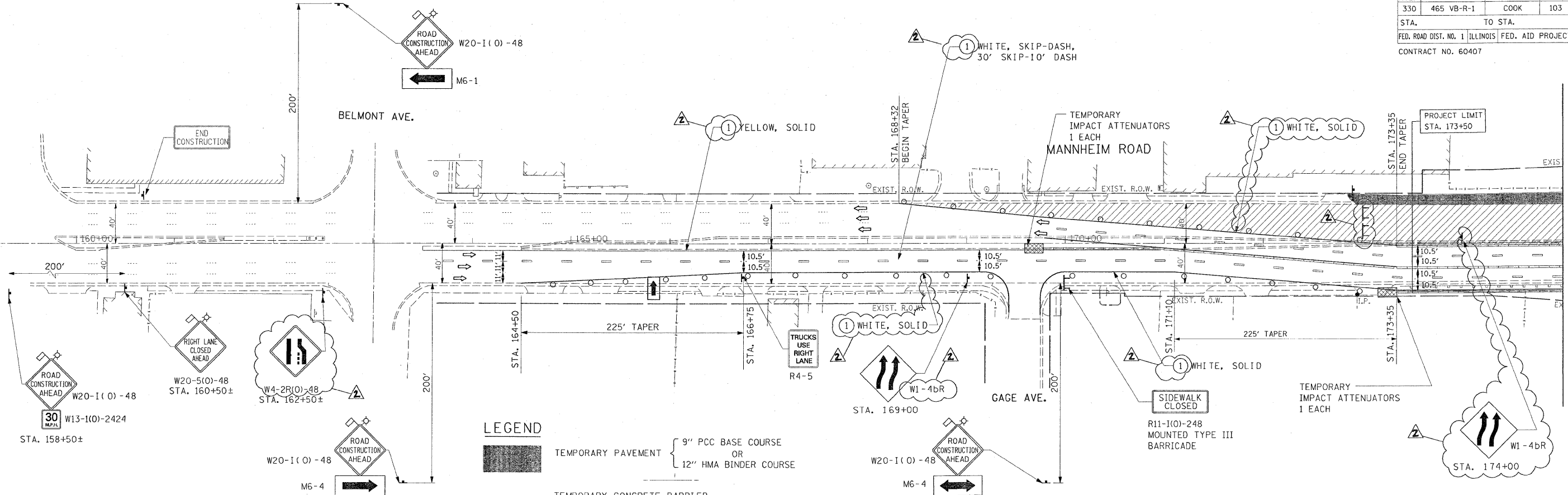


EARTH TECH | AECOM

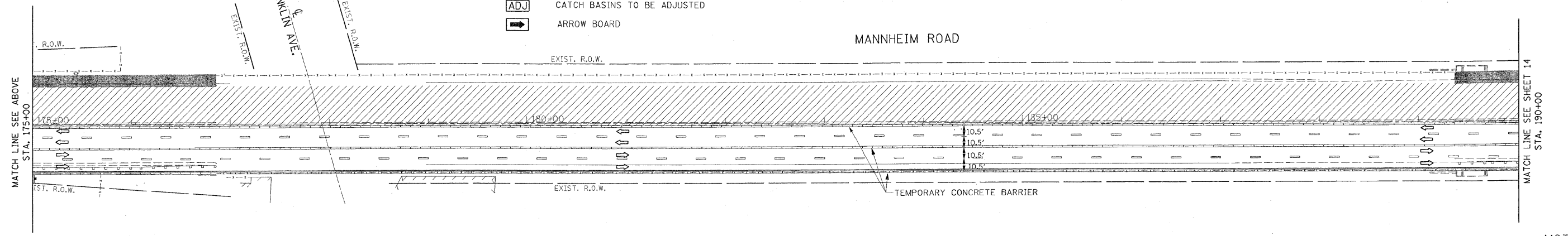
Rev. Sheet 10-19-09

L:\WORK\53346\cecd\drawings\Roadway\12MOT\stgl.dgn 10/21/2009

F.A.P. RTE.	SECTION	COUNTY	TOTAL SHEETS	SHEET NO.
330	465 VB-R-1	COOK	103	13
STA.		TO STA.		
FED. ROAD DIST. NO. 1		ILLINOIS FED. AID PROJECT		
CONTRACT NO. 60407				



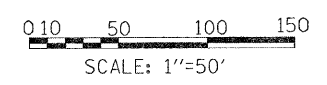
- LEGEND**
- TEMPORARY PAVEMENT { 9" PCC BASE COURSE OR 12" HMA BINDER COURSE
 - TEMPORARY CONCRETE BARRIER
 - DIRECTION OF TRAFFIC
 - DRUM OR TYPE II PLASTIC BARRICADE WITH STEADY BURNING LIGHT, 50' C-C ON CURVE/TAPER 100' C-C ON TANGENT
 - TRAFFIC SIGN
 - PAVEMENT MARKING REMOVAL
 - TYPE III BARRICADE
 - TEMPORARY PAVEMENT MARKING-LINE 4"
 - CATCH BASINS TO BE ADJUSTED
 - ARROW BOARD



MATCH LINE SEE ABOVE STA. 175+00

MATCH LINE SEE SHEET 14 STA. 190+00

L:\WORK\53346\cadd\drawings\Roadway\13MOT1stg2.dgn 10/21/2009



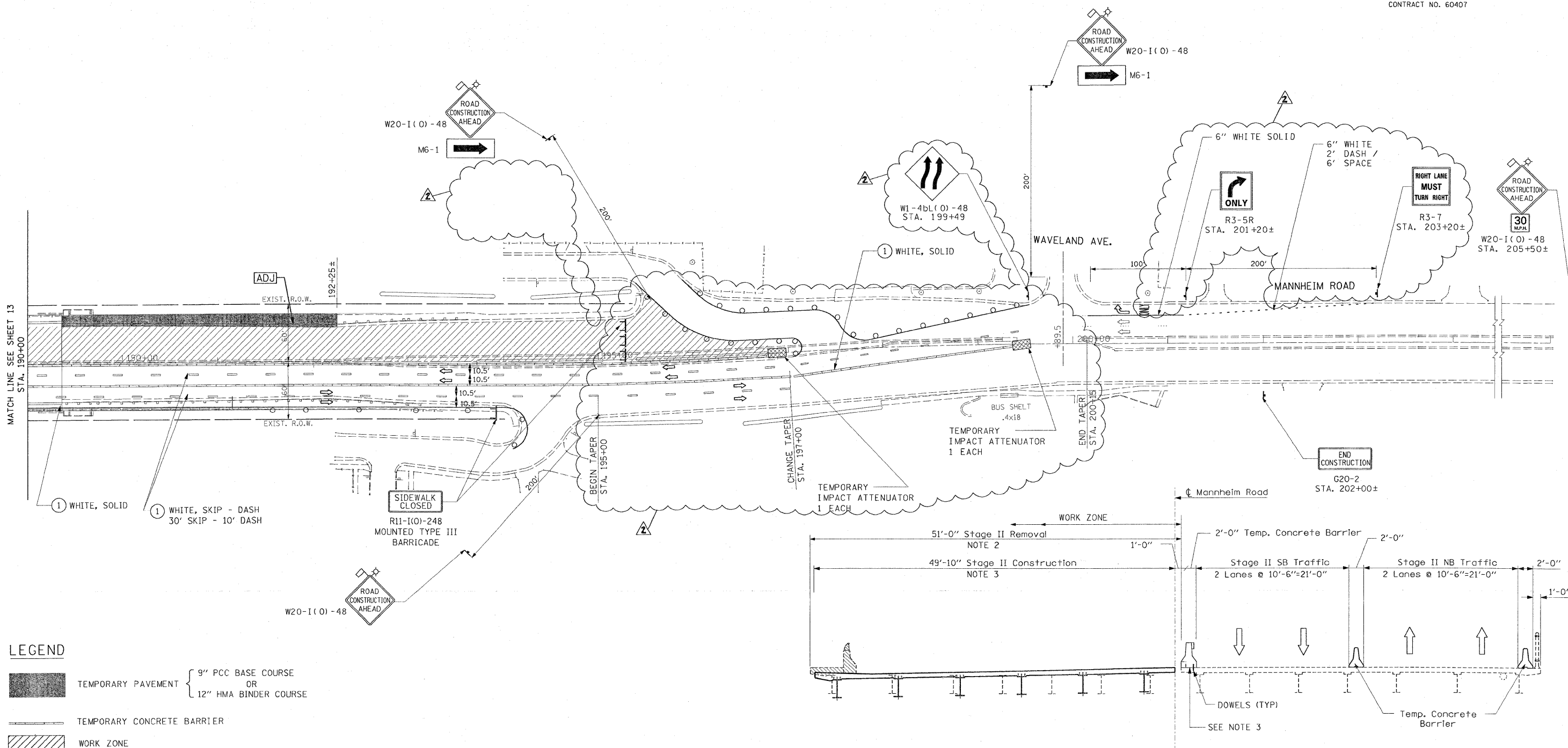
EARTH TECH | AECOM

REVISIONS	
NAME	DATE
ADDENDUM 2	10-19-09

ILLINOIS DEPARTMENT OF TRANSPORTATION
 FAP 330 US 12/45 (MANNHEIM RD.) OVER
 500 LINE RR & FRANKLIN AVE.
**MAINTENANCE OF TRAFFIC
 STAGE II**
 SCALE: 1"=50'
 DATE: JULY 8, 2009
 DRAWN BY: CJO
 CHECKED BY: PWK

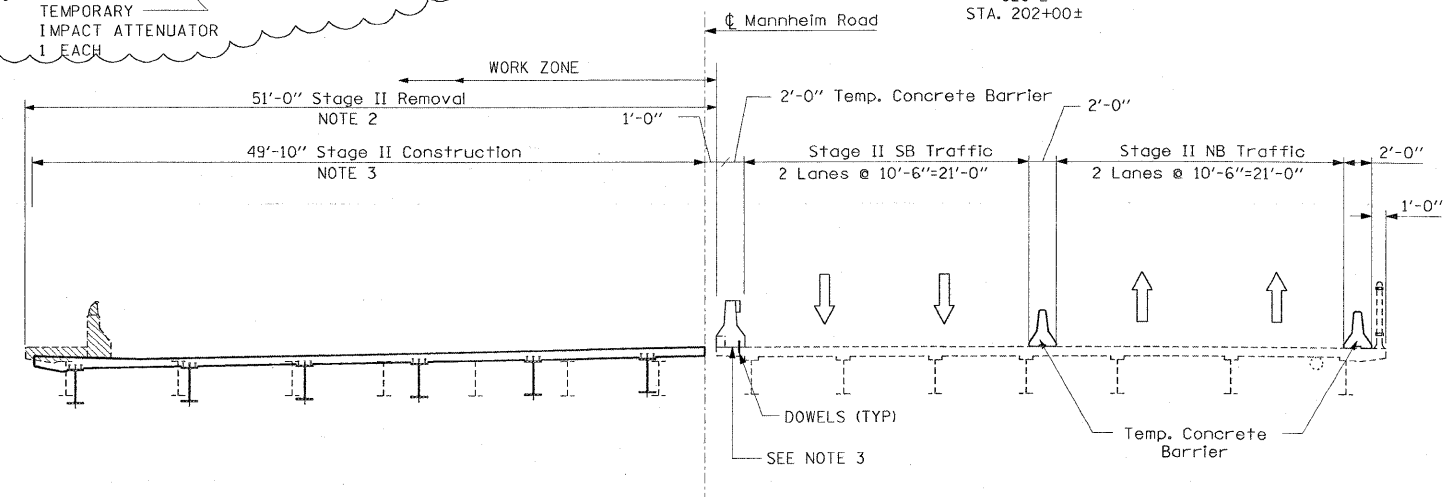
MOT-6

F.A.P. RTE.	SECTION	COUNTY	TOTAL SHEETS	SHEET NO.
330	465 VB-R-1	COOK	103	14
STA.		TO STA.		
FED. ROAD DIST. NO. 1		ILLINOIS FED. AID PROJECT		
CONTRACT NO. 60407				

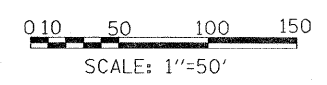


- LEGEND**
- TEMPORARY PAVEMENT { 9" PCC BASE COURSE OR 12" HMA BINDER COURSE
 - TEMPORARY CONCRETE BARRIER
 - WORK ZONE
 - DIRECTION OF TRAFFIC
 - DRUM OR TYPE II PLASTIC BARRICADE WITH STEADY BURNING LIGHT, 50' C-C ON CURVE/TAPER 100' C-C ON TANGENT
 - TRAFFIC SIGN
 - PAVEMENT MARKING REMOVAL
 - TYPE III BARRICADE
 - TEMPORARY PAVEMENT MARKING-LINE 4"
 - CATCH BASINS TO BE ADJUSTED

NOTE
 1. SEE BRIDGE DWG. NO. S3, S4, S5 AND S46 FOR DETAILS.



STAGE II
 (Looking Upstation)



EARTH TECH | AECOM

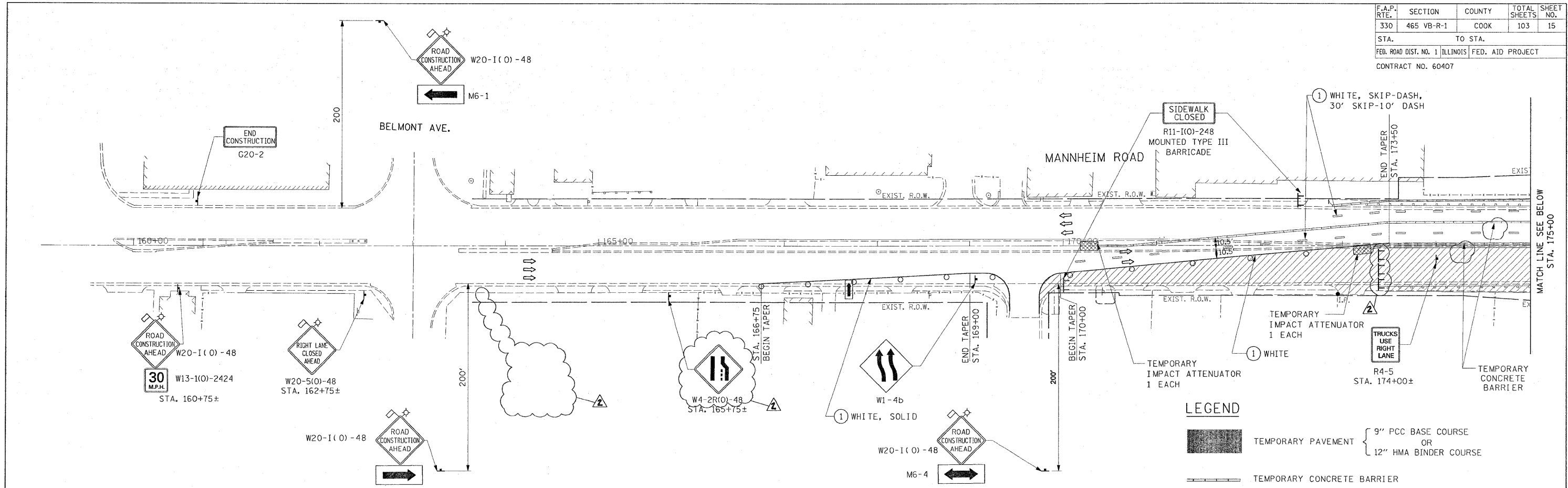
REVISIONS	
NAME	DATE
ADDENDUM 2	10-19-09

ILLINOIS DEPARTMENT OF TRANSPORTATION
 FAP 330 US 12/45 (MANNHEIM RD.) OVER
 500 LINE RR & FRANKLIN AVE.
**MAINTENANCE OF TRAFFIC
 STAGE II**
 SCALE: 1"= 50'
 DATE: JULY 8, 2009
 DRAWN BY: CJO
 CHECKED BY: PWK

MOT-7

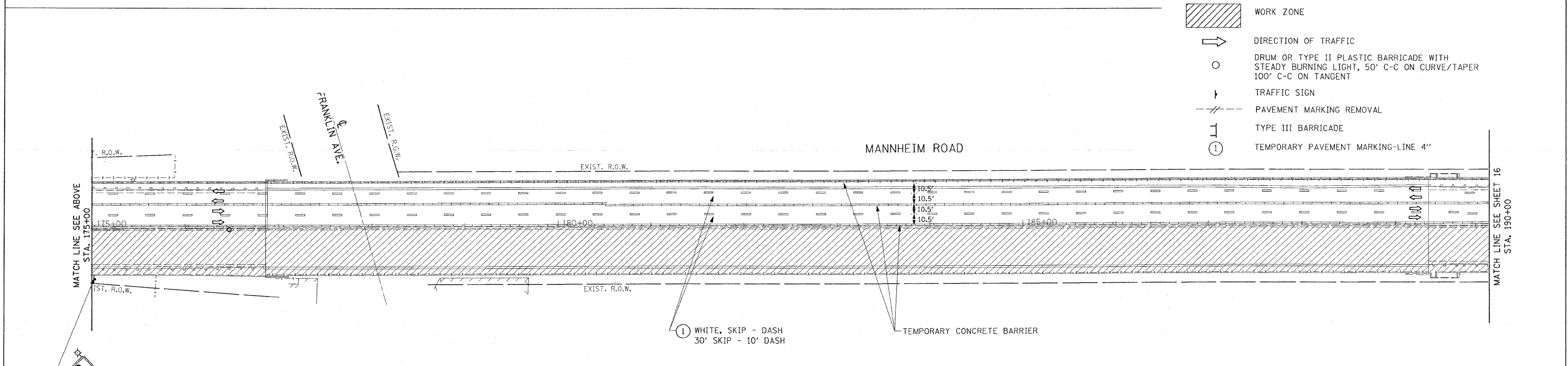
L:\WORK\53346\cadd\drawings\Roadway\14\DOT\stg2.dgn 10/21/2009

F.A.P. RTE.	SECTION	COUNTY	TOTAL SHEETS	SHEET NO.
330	465 VB-R-1	COOK	103	15
STA.	TO STA.			
FED. ROAD DIST. NO.	ILLINOIS	FED. AID PROJECT		
CONTRACT NO. 60407				

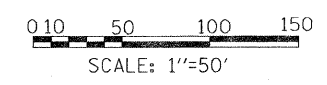


LEGEND

- TEMPORARY PAVEMENT { 9" PCC BASE COURSE OR 12" HMA BINDER COURSE }
- TEMPORARY CONCRETE BARRIER
- WORK ZONE
- DIRECTION OF TRAFFIC
- DRUM OR TYPE II PLASTIC BARRICADE WITH STEADY BURNING LIGHT, 50' C-C ON CURVE/TAPER 100' C-C ON TANGENT
- TRAFFIC SIGN
- PAVEMENT MARKING REMOVAL
- TYPE III BARRICADE
- TEMPORARY PAVEMENT MARKING-LINE 4"



L:\WORK\63346\cadd\cra\manga\Roadway\15MOT1stg3.dgn 10/21/2009



EARTH TECH | AECOM

REVISIONS	
NAME	DATE
ADDENDUM 2	10-19-09

MOT-8

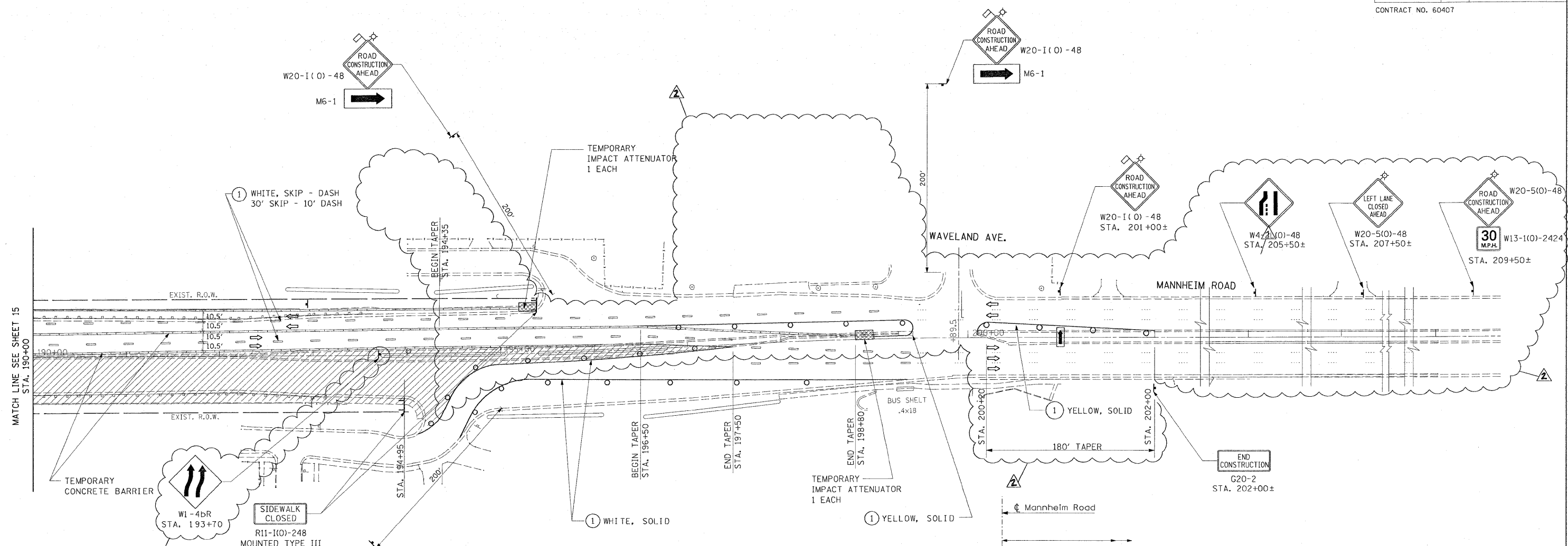
ILLINOIS DEPARTMENT OF TRANSPORTATION
 FAP 330 US 12/45 (MANNHEIM RD.) OVER
 500 LINE RR & FRANKLIN AVE.

**MAINTENANCE OF TRAFFIC
 STAGE III**

SCALE: 1"=50'
 DATE: JULY 8, 2009

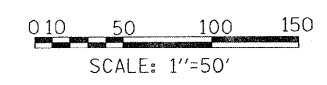
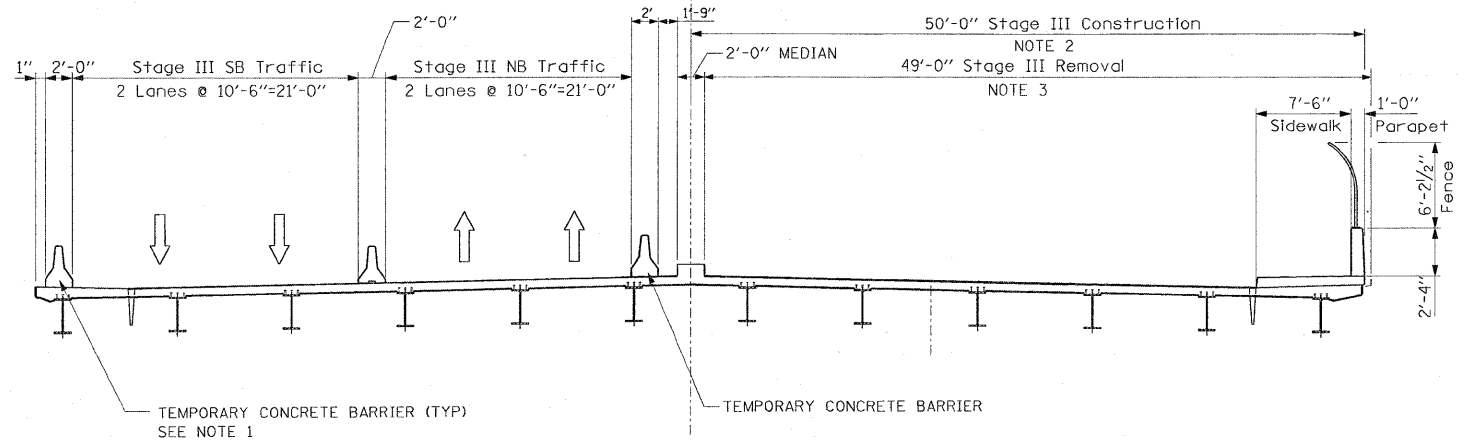
DRAWN BY: CJO
 CHECKED BY: PWK

F.A.P. RTE.	SECTION	COUNTY	TOTAL SHEETS	SHEET NO.
330	465 VB-R-1	COOK	103	16
STA.	TO STA.			
FED. ROAD DIST. NO. 1 ILLINOIS FED. AID PROJECT				
CONTRACT NO. 60407				



- LEGEND**
- TEMPORARY PAVEMENT { 9" PCC BASE COURSE OR 12" HMA BINDER COURSE
 - TEMPORARY CONCRETE BARRIER
 - WORK ZONE
 - DIRECTION OF TRAFFIC
 - DRUM OR TYPE II PLASTIC BARRICADE WITH STEADY BURNING LIGHT, 50' C-C ON CURVE/TAPER 100' C-C ON TANGENT
 - TRAFFIC SIGN
 - PAVEMENT MARKING REMOVAL
 - TYPE III BARRICADE
 - TEMPORARY PAVEMENT MARKING-LINE 4"
 - CATCH BASINS TO BE ADJUSTED
 - ARROW BOARD

NOTE
 1. SEE BRIDGE DWG. NO. S3, S4, 55 AND S46 FOR DETAILS.



EARTH TECH | AECOM

REVISIONS	
NAME	DATE
ADDENDUM 2	10-19-09

MOT-9

ILLINOIS DEPARTMENT OF TRANSPORTATION
 FAP 330 US 12/45 (MANNHEIM RD.) OVER
 500 LINE RR & FRANKLIN AVE.

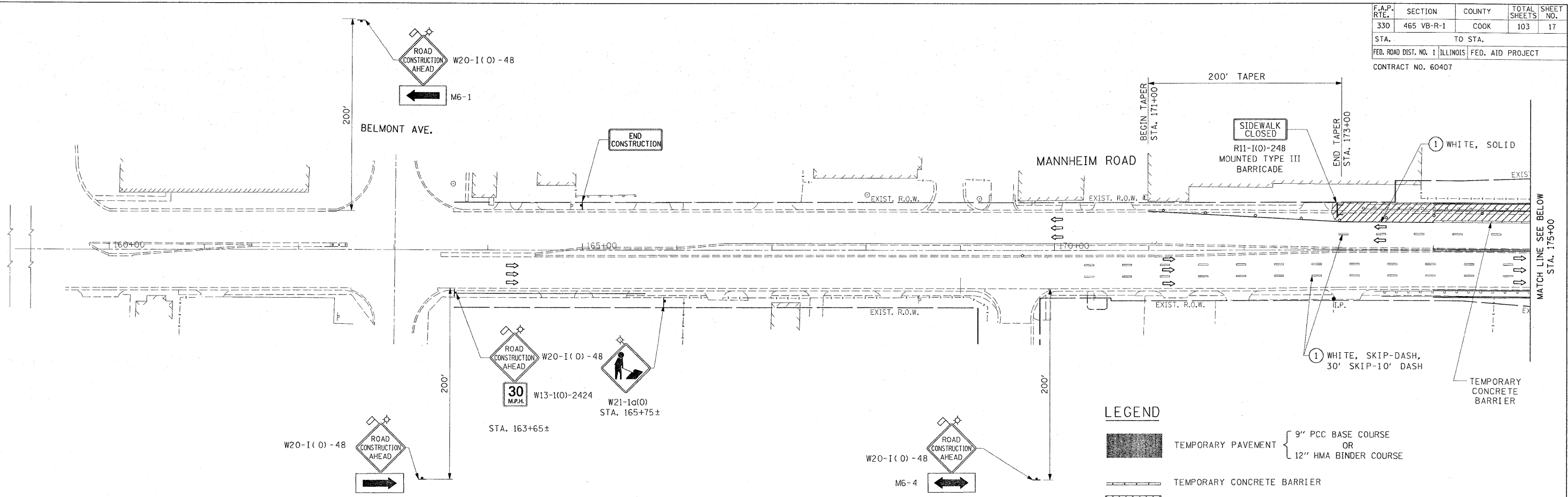
**MAINTENANCE OF TRAFFIC
 STAGE III**

SCALE: 1"= 50'
 DATE: JULY 8, 2009

DRAWN BY: CJO
 CHECKED BY: PWK

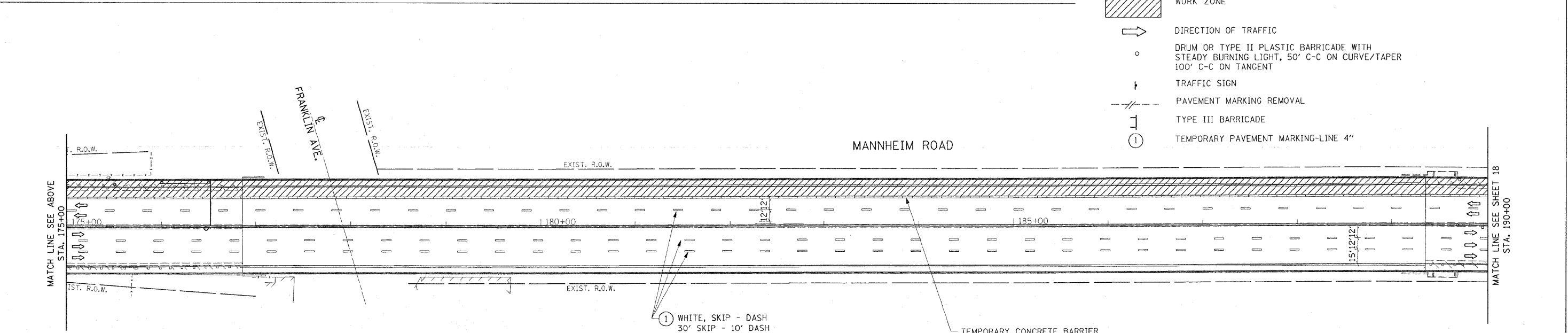
L:\WORK\53346\cadd\drawings\Roadway\IBMDT\stg3.dgn 10/21/2009

F.A.P. RTE.	SECTION	COUNTY	TOTAL SHEETS	SHEET NO.
330	465 VB-R-1	COOK	103	17
STA.		TO STA.		
FED. ROAD DIST. NO. 1 ILLINOIS FED. AID PROJECT				
CONTRACT NO. 60407				

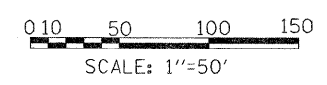


LEGEND

- TEMPORARY PAVEMENT { 9" PCC BASE COURSE OR 12" HMA BINDER COURSE
- TEMPORARY CONCRETE BARRIER
- WORK ZONE
- DIRECTION OF TRAFFIC
- DRUM OR TYPE II PLASTIC BARRICADE WITH STEADY BURNING LIGHT, 50' C-C ON CURVE/TAPER 100' C-C ON TANGENT
- TRAFFIC SIGN
- PAVEMENT MARKING REMOVAL
- TYPE III BARRICADE
- TEMPORARY PAVEMENT MARKING-LINE 4"



L:\WORK\53346\cadd\drawings\Roadway\17MOT\stg4.dgn 10/21/2009



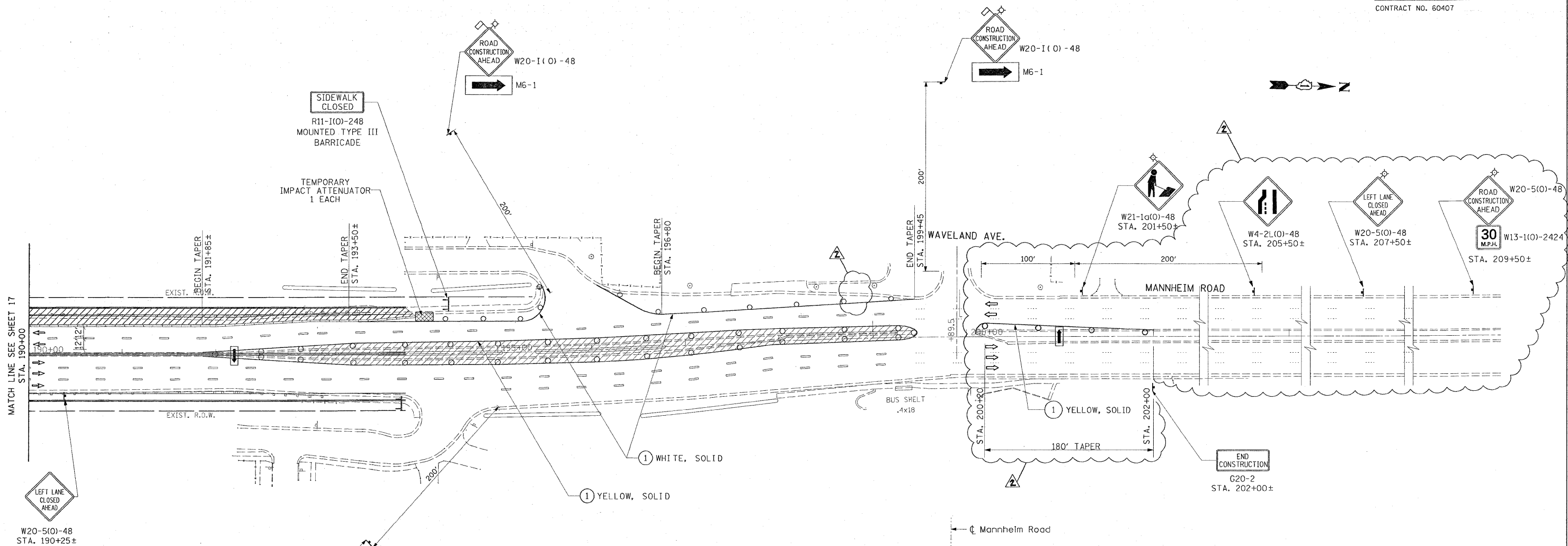
EARTH TECH | AECOM

Rev. Sheet 10-19-09

REVISIONS	
NAME	DATE
Rev. 10-19-09	

MOT-10
 ILLINOIS DEPARTMENT OF TRANSPORTATION
 FAP 330 US 12/45 (MANNHEIM RD.) OVER
 500 LINE RR & FRANKLIN AVE.
**MAINTENANCE OF TRAFFIC
 STAGE IV**
 SCALE: 1" = 50'
 DATE: JULY 8, 2009
 DRAWN BY: CJO
 CHECKED BY: PWK

F.A.P. RTE.	SECTION	COUNTY	TOTAL SHEET NO.
330	465 VB-R-1	COOK	103 18
STA.	TO STA.		
FED. ROAD DIST. NO. 1	ILLINOIS	FED. AID PROJECT	
CONTRACT NO. 60407			



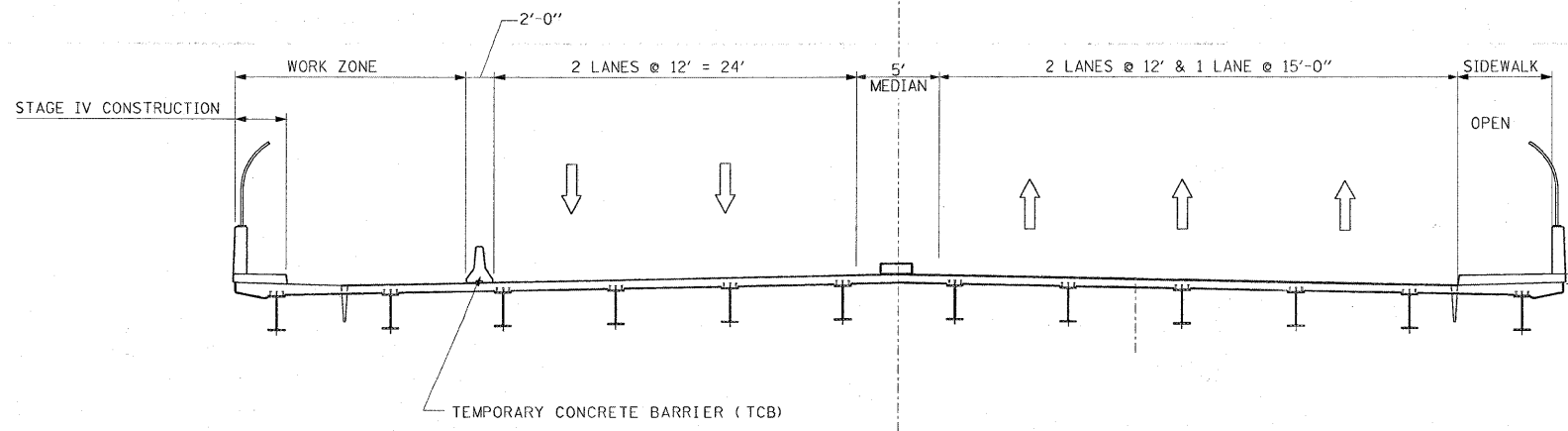
MATCH LINE SEE SHEET 17 STA. 190+00

W20-5(O)-48 STA. 190+25±

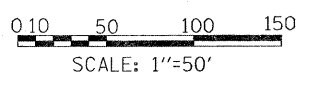
W20-1(O)-48 M6-1

LEGEND

- TEMPORARY PAVEMENT { 9" PCC BASE COURSE OR 12" HMA BINDER COURSE
- TEMPORARY CONCRETE BARRIER
- WORK ZONE
- DIRECTION OF TRAFFIC
- DRUM OR TYPE II PLASTIC BARRICADE WITH STEADY BURNING LIGHT, 50' C-C ON CURVE/TAPER 100' C-C ON TANGENT
- TRAFFIC SIGN
- PAVEMENT MARKING REMOVAL
- TYPE III BARRICADE
- TEMPORARY PAVEMENT MARKING-LINE 4"



STAGE IV
(Looking Upstation)



EARTH TECH | AECOM

REVISIONS	
NAME	DATE
ADDENDUM 2	10-19-09

ILLINOIS DEPARTMENT OF TRANSPORTATION
FAP 330 US 12/45 (MANNHEIM RD.) OVER
500 LINE RR & FRANKLIN AVE.
**MAINTENANCE OF TRAFFIC
STAGE IV**
SCALE: 1"= 50'
DATE: JULY 8, 2009
DRAWN BY: CJO
CHECKED BY: PWK

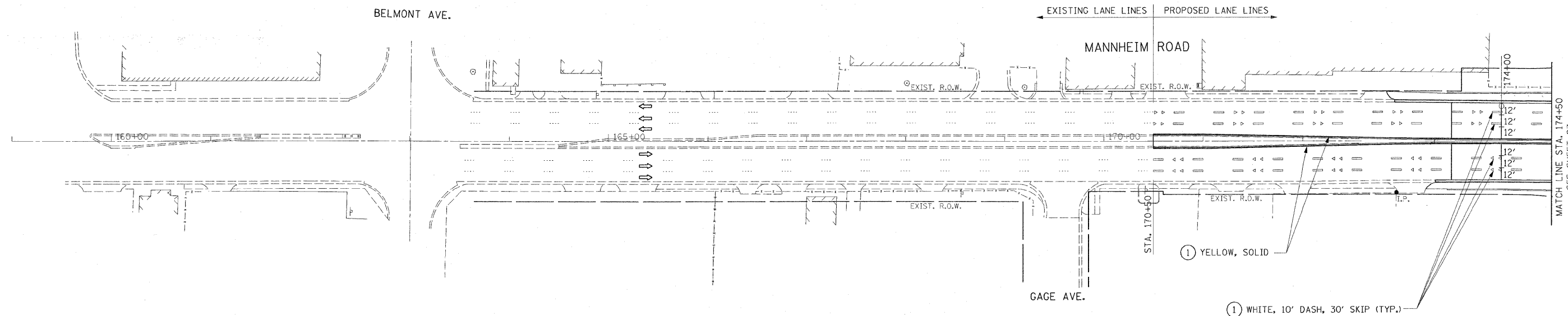
MOT-11

L:\WORK\53346\cadd\c-rw\ings\Roadway\18MDT.stg4.dgn 10/21/2009

F.A.P. RTE.	SECTION	COUNTY	TOTAL SHEETS	SHEET NO.
330	465 VB-R-1	COOK	103	29
STA. 162+55		TO STA. 174+50		
FED. ROAD DIST. NO. 1 ILLINOIS FED. AID PROJECT				
CONTRACT NO. 60407				

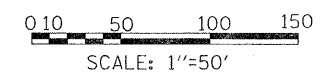


- ① THERMOPLASTIC PAVEMENT MARKING - LINE 4"
- ② PREFORMED PLASTIC PAVEMENT MARKING, TYPE B - LINE 4"
- ③ THERMOPLASTIC PAVEMENT MARKING - LINE 6"
- ④ THERMOPLASTIC PAVEMENT MARKING, LETTERS AND SYMBOLS (WHITE)
- ⑤ THERMOPLASTIC PAVEMENT MARKING, LINE 24" (WHITE)
- ◄ 1 - WAY RAISED REFLECTIVE PAVEMENT MARKER, CRYSTAL (TYP.)
- ⇐ DIRECTION OF TRAVEL



NOTES:

1. TWO WEEKS PRIOR TO PLACING THE PERMANENT PAVEMENT MARKINGS, CONTACT WALTER CZARNY, AREA TRAFFIC FIELD ENGINEER AT (847) 715-8419.
2. PERMANENT PAVEMENT MARKINGS SHALL BE APPLIED IN ACCORDANCE WITH THE DISTRICT ONE DETAIL FOR "TYPICAL PAVEMENT MARKINGS".
3. RAISED REFLECTIVE PAVEMENT MARKINGS SHALL BE APPLIED IN ACCORDANCE WITH THE DISTRICT ONE DETAIL FOR "RAISED REFLECTIVE PAVEMENT MARKERS (SNOW PLOW RESISTANT)".



EARTH TECH | AECOM

REVISIONS	
NAME	DATE
ADDENDUM 2	10-19-09

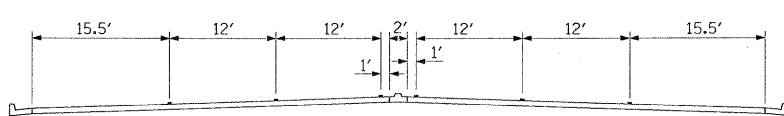
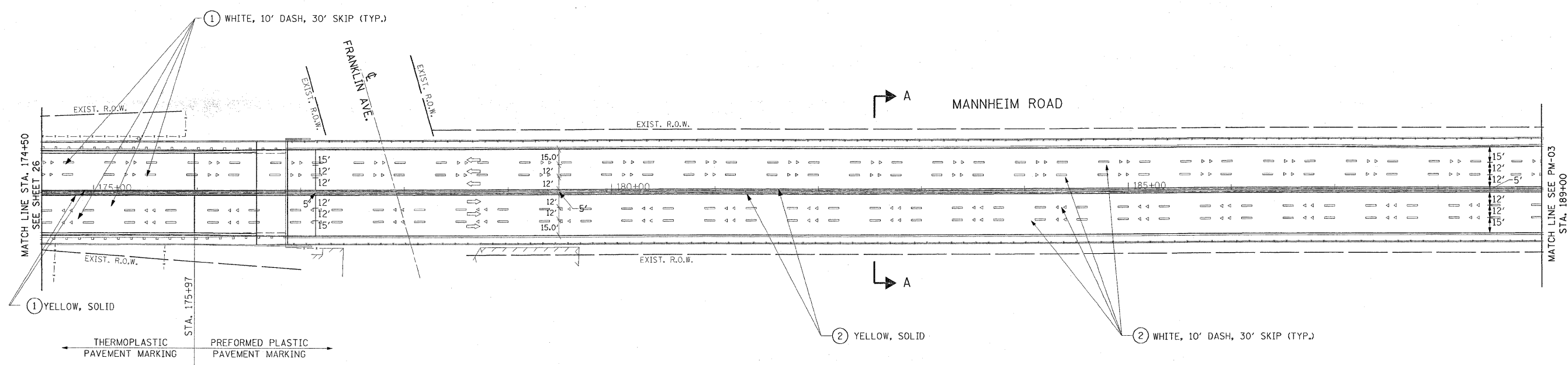
ILLINOIS DEPARTMENT OF TRANSPORTATION
 FAP 330 US 12/45 (MANNHEIM RD.) OVER
 500 LINE RR & FRANKLIN AVE.
PAVEMENT MARKING
 STA. 173+50 TO STA. 174+50
 SCALE: 1" = 50'
 DATE: JULY 8, 2009
 DRAWN BY: CJO
 CHECKED BY: PWK

PM-1

L:\WORK\53346\cadd\drawings\Roadway\29PM-LS.dgn 10/21/2009

F.A.P. RTE.	SECTION	COUNTY	TOTAL SHEETS	SHEET NO.
330	465 VB-R-1	COOK	103	30
STA. 174+50		TO STA. 189+00		
FED. ROAD DIST. NO. 1 ILLINOIS FED. AID PROJECT				
CONTRACT NO. 60407				

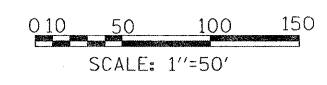
- ① THERMOPLASTIC PAVEMENT MARKING - LINE 4"
- ② PREFORMED PLASTIC PAVEMENT MARKING, TYPE B - LINE 4"
- ③ THERMOPLASTIC PAVEMENT MARKING - LINE 6"
- ④ THERMOPLASTIC PAVEMENT MARKING, LETTERS AND SYMBOLS (WHITE)
- ⑤ THERMOPLASTIC PAVEMENT MARKING, LINE 24" (WHITE)
- ▲ 1 - WAY RAISED REFLECTIVE PAVEMENT MARKER, CRYSTAL (TYP.)
- ↑ DIRECTION OF TRAVEL



SECTION A-A

NOTES:

1. TWO WEEKS PRIOR TO PLACING THE PERMANENT PAVEMENT MARKINGS, CONTACT WALTER CZARNY, AREA TRAFFIC FIELD ENGINEER AT (847) 715-8419.
2. PERMANENT PAVEMENT MARKINGS SHALL BE APPLIED IN ACCORDANCE WITH THE DISTRICT ONE DETAIL FOR "TYPICAL PAVEMENT MARKINGS".
3. RAISED REFLECTIVE PAVEMENT MARKINGS SHALL BE APPLIED IN ACCORDANCE WITH THE DISTRICT ONE DETAIL FOR "RAISED REFLECTIVE PAVEMENT MARKERS (SNOW PLOW RESISTANT)".



EARTH TECH | AECOM

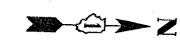
REVISIONS	
NAME	DATE
ADDENDUM 2	10-19-09

ILLINOIS DEPARTMENT OF TRANSPORTATION
 FAP 330 US 12/45 (MANNHEIM RD.) OVER
 500 LINE RR & FRANKLIN AVE.
PAVEMENT MARKING
 STA. 174+50 TO STA. 189+00
 SCALE: 1" = 50'
 DATE: JULY 8, 2009
 DRAWN BY: CJO
 CHECKED BY: PWK

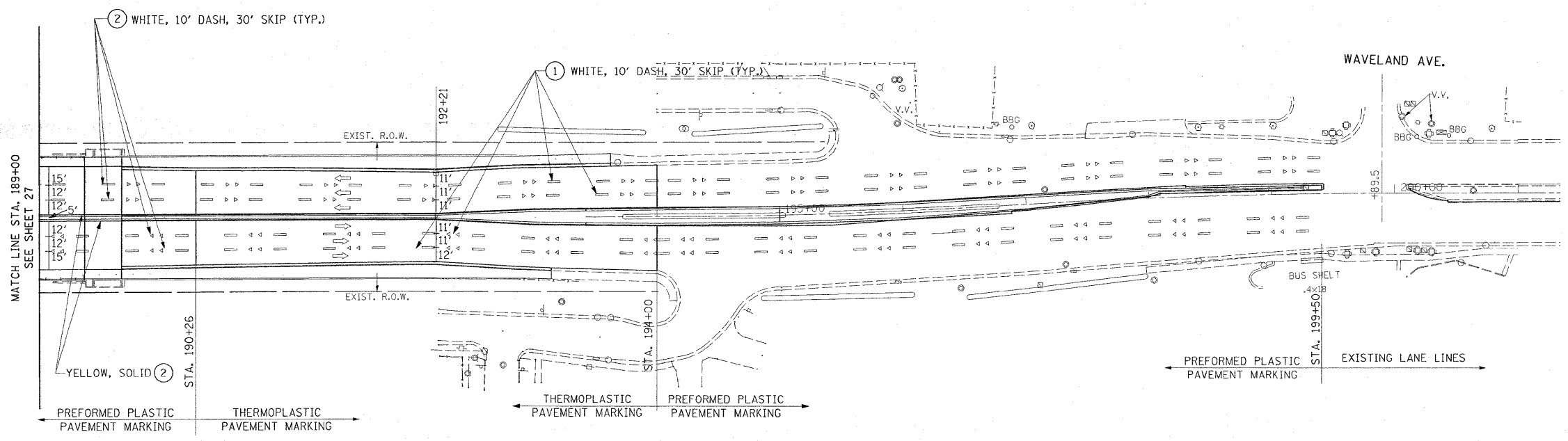
PM-2

L:\WORK\53346\add\dr-awings\Roadway\30PM-LS.dgn 10/21/2009

F.A.P. RTE.	SECTION	COUNTY	TOTAL SHEETS	SHEET NO.
330	465 VB-R-1	COOK	103	31
STA. 189+00		TO STA. 199+39		
FED. ROAD DIST. NO. 1 ILLINOIS FED. AID PROJECT				
CONTRACT NO. 60407				

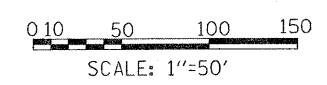


- ① THERMOPLASTIC PAVEMENT MARKING - LINE 4"
- ② PREFORMED PLASTIC PAVEMENT MARKING, TYPE B - LINE 4"
- ③ THERMOPLASTIC PAVEMENT MARKING - LINE 6"
- ④ THERMOPLASTIC PAVEMENT MARKING, LETTERS AND SYMBOLS (WHITE)
- ⑤ THERMOPLASTIC PAVEMENT MARKING, LINE 24" (WHITE)
- ▲ 1 - WAY RAISED REFLECTIVE PAVEMENT MARKER, CRYSTAL (TYP.)
- ↑ DIRECTION OF TRAVEL



NOTES:

1. TWO WEEKS PRIOR TO PLACING THE PERMANENT PAVEMENT MARKINGS, CONTACT WALTER CZARNY, AREA TRAFFIC FIELD ENGINEER AT (847) 715-8419.
2. PERMANENT PAVEMENT MARKINGS SHALL BE APPLIED IN ACCORDANCE WITH THE DISTRICT ONE DETAIL FOR "TYPICAL PAVEMENT MARKINGS".
3. RAISED REFLECTIVE PAVEMENT MARKINGS SHALL BE APPLIED IN ACCORDANCE WITH THE DISTRICT ONE DETAIL FOR "RAISED REFLECTIVE PAVEMENT MARKERS (SNOW PLOW RESISTANT)".



EARTH TECH | AECOM

REVISIONS	
NAME	DATE
▲ ADDENDUM 2	10-19-09

ILLINOIS DEPARTMENT OF TRANSPORTATION
 FAP 330 US 12/45 (MANNHEIM RD.) OVER
 S00 LINE RR & FRANKLIN AVE.
PAVEMENT MARKING
 STA. 189+00 TO STA. 194+00
 SCALE: 1" = 50'
 DATE: JULY 8, 2009
 DRAWN BY: CJO
 CHECKED BY: PWK

PM-3

L:\WORK\53346\cadd\drawings\Roadway\31PM-L.S.dgn 10/21/2009