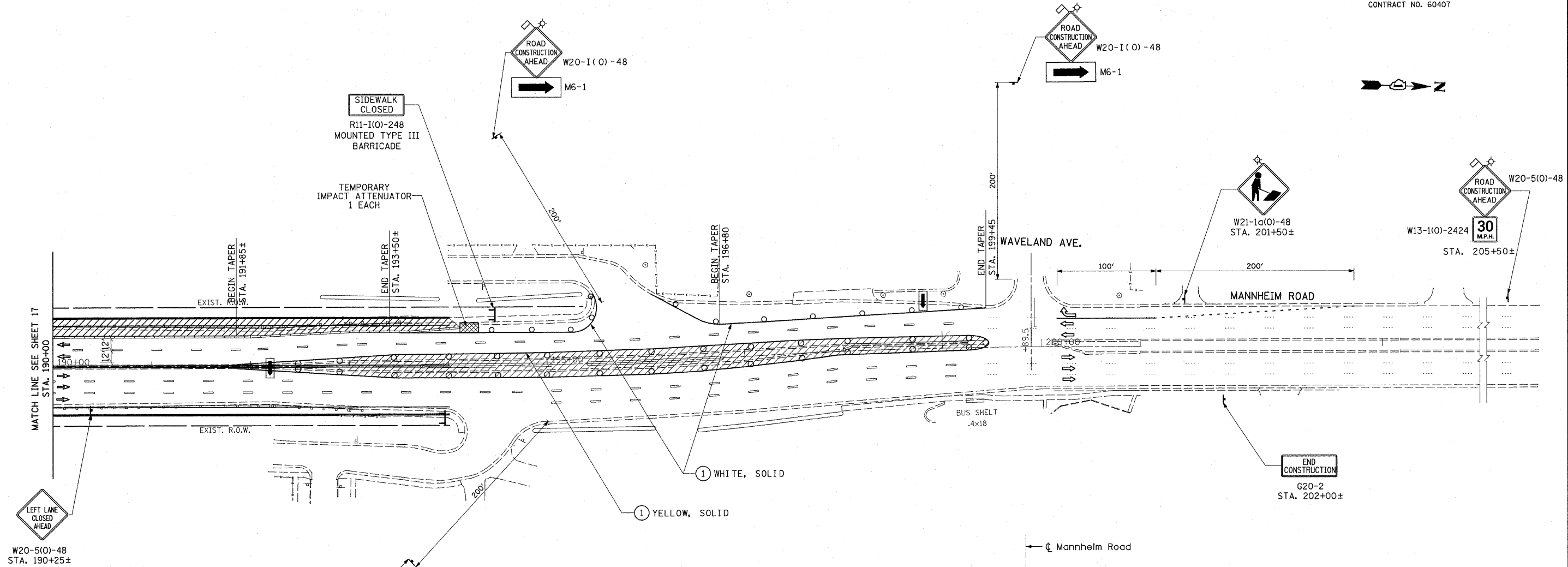


F.A.P. RTE.	SECTION	COUNTY	TOTAL SHEETS	SHEET NO.
330	465 VB-R-1	COOK	103	18
STA.		TO STA.		
FED. ROAD DIST. NO. 1		ILLINOIS	FED. AID PROJECT	
CONTRACT NO. 60407				



W20-5(O)-48
STA. 190+25±

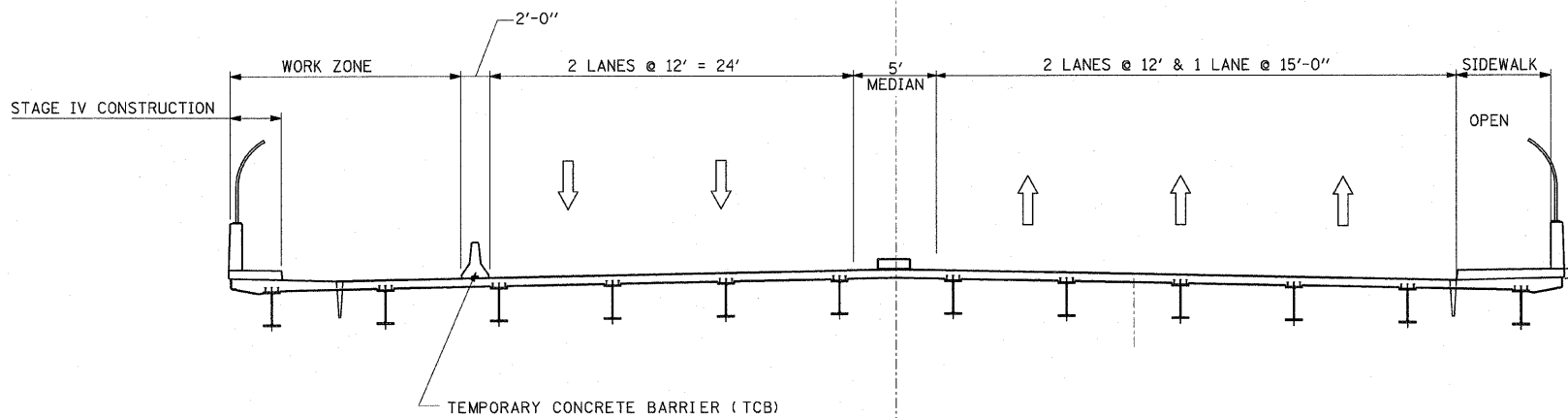
W20-1(O)-48
M6-1

END CONSTRUCTION
G20-2
STA. 202+00±

W20-5(O)-48
W13-1(O)-2424
30 M.P.H.
STA. 205+50±

LEGEND

- TEMPORARY PAVEMENT
1" HMA SURFACE COURSE, MIX D, N50,
8" PCC BASE COURSE
OR
1" HMA SURFACE COURSE, MIX D, N50,
11" HMA BASE COURSE
- TEMPORARY CONCRETE BARRIER
- WORK ZONE
- DIRECTION OF TRAFFIC
- DRUM OR TYPE II PLASTIC BARRICADE WITH STEADY BURNING LIGHT, 50' C-C ON CURVE/TAPER 100' C-C ON TANGENT
- TRAFFIC SIGN
- PAVEMENT MARKING REMOVAL
- TYPE III BARRICADE
- TEMPORARY PAVEMENT MARKING-LINE 4"



STAGE IV
(Looking Upstation)

0 10 50 100 150
SCALE: 1"=50'

EARTH TECH | AECOM

REVISIONS	
NAME	DATE

MOT-11
ILLINOIS DEPARTMENT OF TRANSPORTATION
FAP 330 US 12/45 (MANNHEIM RD.) OVER
500 LINE RR & FRANKLIN AVE.
**MAINTENANCE OF TRAFFIC
STAGE IV**

SCALE: 1"= 50'
DATE: JULY 8, 2009
DRAWN BY: CJO
CHECKED BY: PWK